

Wu J, Moriwaki K, Asuka T, et al. EHBP1L1, an apicobasal polarity regulator, is critical for nuclear polarization during enucleation of erythroblasts. *Blood Adv.* 2023;7(14):3382–3394.

Page 3384: In [Figure 1H](#) in the bottom panel for β -tubulin, the band in the leftmost lane was included in error. There were 6 bands in the β -tubulin panel in the original figure, but there should only have been 5. The corrected [Figure 1H](#) is shown below.

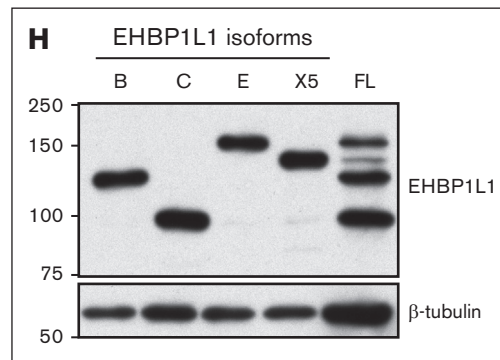


Figure 1. *Ehbp111*^{-/-} mice exhibit lethal anemia. (H) WCEs from *Ehbp111*^{-/-} mouse embryonic fibroblasts transfected with pcDNA3 encoding EHBP1L1 isoform B, C, E, or X5 and WCEs from E14.5 mouse FL were subjected to western blotting. ****P* < .001, *****P* < .0001 (unpaired *t* test with Welch's correction in panel D; 1-way analysis of variance [ANOVA] in panel F).

<https://doi.org/10.1182/bloodadvances.2023011838>

© 2024 by The American Society of Hematology. Licensed under [Creative Commons Attribution-NonCommercial-NoDerivatives 4.0 International \(CC BY-NC-ND 4.0\)](#), permitting only noncommercial, nonderivative use with attribution. All other rights reserved.