

# The CLL comorbidity index in a population-based cohort: a tool for clinical care and research

Emelie C. Rotbain,<sup>1-5,\*</sup> Max J. Gordon,<sup>6,\*</sup> Noomi Vainer,<sup>1</sup> Henrik Frederiksen,<sup>3,4,7</sup> Henrik Hjalgrim,<sup>1,2,5,8</sup> Alexey V. Danilov,<sup>9</sup> and Carsten U. Niemann<sup>1,8</sup>

<sup>1</sup>Department of Hematology, Rigshospitalet, Copenhagen, Denmark; <sup>2</sup>Hematology Research Group, Danish Cancer Society Research Center, Copenhagen, Denmark;

<sup>3</sup>Department of Clinical Research, University of Southern Denmark, Odense, Denmark; <sup>4</sup>Department of Hematology, Odense University Hospital, Odense, Denmark;

<sup>5</sup>Department of Epidemiology Research, Statens Serum Institut, Copenhagen, Denmark; <sup>6</sup>The University of Texas MD Anderson Cancer Center, Houston, TX; <sup>7</sup>Academy of Geriatric Cancer Research (AgeCare), Odense University Hospital, Odense, Denmark; <sup>8</sup>Department of Clinical Medicine, Copenhagen University, Copenhagen, Denmark; and

<sup>9</sup>City of Hope National Medical Center, Duarte, CA

## Key Points

- The CLL comorbidity index demonstrates prognostic significance in a large patient cohort, justifying its use in clinical care and research.
- The CLL comorbidity index associates with time to first treatment, event-free survival, and overall survival in treatment-naïve patients with CLL.

The chronic lymphocytic leukemia comorbidity index (CLL-CI) is an efficient, CLL-specific tool derived from the Cumulative Illness Rating Scale. The CLL-CI is based on the assessment of the organ systems found to be most strongly associated with event-free survival (EFS) in CLL: vascular, upper gastrointestinal, and endocrine, at the time of initiation of CLL therapy. The CLL-CI categorizes patients into low, intermediate, and high risk groups. In the present study, we have employed the CLL-CI in a population-based cohort comprising 4975 patients with CLL. We demonstrate that CLL-CI retains prognostic significance in this large cohort and is associated with overall survival (OS) and EFS from time of first therapy. Furthermore, CLL-CI associates with OS, EFS, and time to first treatment from diagnosis independently of the CLL International Prognostic Index. These findings support the use of the CLL-CI both in research and in clinical practice.

## Introduction

Advanced age and comorbid medical conditions are common and may influence outcomes in chronic lymphocytic leukemia (CLL).<sup>1,2</sup> The International Workshop on CLL 2018 guidelines recommend assessment of comorbidities in patients enrolled in clinical trials,<sup>1</sup> which is most commonly done using the Cumulative Illness Rating Scale (CIRS).<sup>3</sup> We and others have previously demonstrated that CIRS correlates with survival and tolerance of therapy in CLL and non-Hodgkin lymphomas, including patients treated with chemoimmunotherapy, targeted agents, and chimeric antigen receptor T-cell therapy.<sup>4-7</sup> Despite the widespread use of CIRS in CLL research, it has not become part of common clinical practice.

The ideal method for measuring comorbidities in patients with CLL, particularly in a fast-paced clinical practice setting, has not been established. Furthermore, it remains unknown which comorbidities are most relevant to CLL outcomes. An analysis of the Danish CLL Register demonstrated an association between nearly all individual comorbidities and overall survival (OS),<sup>8</sup> whereas findings from smaller studies regarding non-Hodgkin lymphomas are inconsistent.<sup>2,7,9</sup> To address this matter, using a machine learning ensemble approach, we recently developed the CLL comorbidity index (CLL-CI) which is a user-

Submitted 8 July 2021; accepted 16 December 2021; prepublished online on *Blood Advances* First Edition 10 January 2022; final version published online 25 April 2022. DOI 10.1182/bloodadvances.2021005716.

\*E.C.R. and M.J.G. contributed equally to this study.

Requests for data sharing may be submitted to Carsten U. Niemann (carsten.utoft.niemann@regionh.dk).

The full-text version of this article contains a data supplement.

© 2022 by The American Society of Hematology. Licensed under Creative Commons Attribution-NonCommercial-NoDerivatives 4.0 International (CC BY-NC-ND 4.0), permitting only noncommercial, nonderivative use with attribution. All other rights reserved.

**Table 1. Baseline data from time of CLL diagnosis for 4975 patients from the Danish CLL register diagnosed with CLL between 2008 and 2018**

	Low risk (n = 3115)	Intermediate risk (n = 1493)	High risk (n = 367)	Overall (n = 4975)	P
<b>Follow-up (y)</b>					<.0001
Median [Q1, Q3]	4.55 [2.43, 7.11]	4.21 [2.22, 6.57]	3.90 [1.86, 6.23]	4.39 [2.31, 6.88]	
<b>Sex</b>					.0042
Female (%)	1270 (40.8)	533 (35.7)	142 (38.7)	1945 (39.1)	
Male (%)	1845 (59.2)	960 (64.3)	225 (61.3)	3030 (60.9)	
<b>Age at diagnosis (y)</b>					<.0001
Median [Q1, Q3]	68.9 [61.6, 76.1]	73.2 [66.1, 80.0]	75.1 [68.3, 80.7]	70.7 [63.3, 78.1]	
<b>Endocrinological disease</b>					<.0001
Yes (%)	0 (0)	187 (12.5)	204 (55.6)	391 (7.9)	
No (%)	3115 (100)	1306 (87.5)	163 (44.4)	4584 (92.1)	
<b>Upper gastrointestinal disease</b>					<.0001
Yes (%)	0 (0)	216 (14.5)	237 (64.6)	453 (9.1)	
No (%)	3115 (100)	1277 (85.5)	130 (35.4)	4522 (90.9)	
<b>Vascular disease</b>					<.0001
Yes (%)	0 (0)	1090 (73.0)	334 (91.0)	1424 (28.6)	
No (%)	3115 (100)	403 (27.0)	33 (9.0)	3551 (71.4)	
<b>IGHV status</b>					<.0001
Mutated (%)	1765 (56.7)	734 (49.2)	139 (37.9)	2638 (53.0)	
Unmutated (%)	701 (22.5)	379 (25.4)	117 (31.9)	1197 (24.1)	
Missing (%)	649 (20.8)	380 (25.5)	111 (30.2)	1140 (22.9)	
<b>Del(17p)</b>					.0009
No (%)	2606 (83.7)	1181 (79.1)	278 (75.7)	4065 (81.7)	
Yes (%)	141 (4.5)	76 (5.1)	32 (8.7)	249 (5.0)	
Missing (%)	368 (11.8)	236 (15.8)	57 (15.5)	661 (13.3)	
<b>Binet stage</b>					<.0001
A (%)	2572 (82.6)	1216 (81.4)	259 (70.6)	4047 (81.3)	
B (%)	393 (12.6)	201 (13.5)	69 (18.8)	663 (13.3)	
C (%)	150 (4.8)	76 (5.1)	39 (10.6)	265 (5.3)	
<b>β2-microglobulin &gt;4.0 mg/L</b>					<.0001
No (%)	2134 (68.5)	915 (61.3)	180 (49.0)	3229 (64.9)	
Yes (%)	269 (8.6)	195 (13.1)	79 (21.5)	543 (10.9)	
Missing (%)	712 (22.9)	383 (25.7)	108 (29.4)	1203 (24.2)	
<b>CLL-IPI</b>					<.0001
Low (%)	1150 (36.9)	419 (28.1)	61 (16.6)	1630 (32.8)	
Intermediate (%)	509 (16.3)	269 (18.0)	73 (19.9)	851 (17.1)	
High (%)	192 (6.2)	115 (7.7)	47 (12.8)	354 (7.1)	
Very high (%)	45 (1.4)	20 (1.3)	6 (1.6)	71 (1.4)	
Missing (%)	1219 (39.1)	670 (44.9)	180 (49.0)	2069 (41.6)	

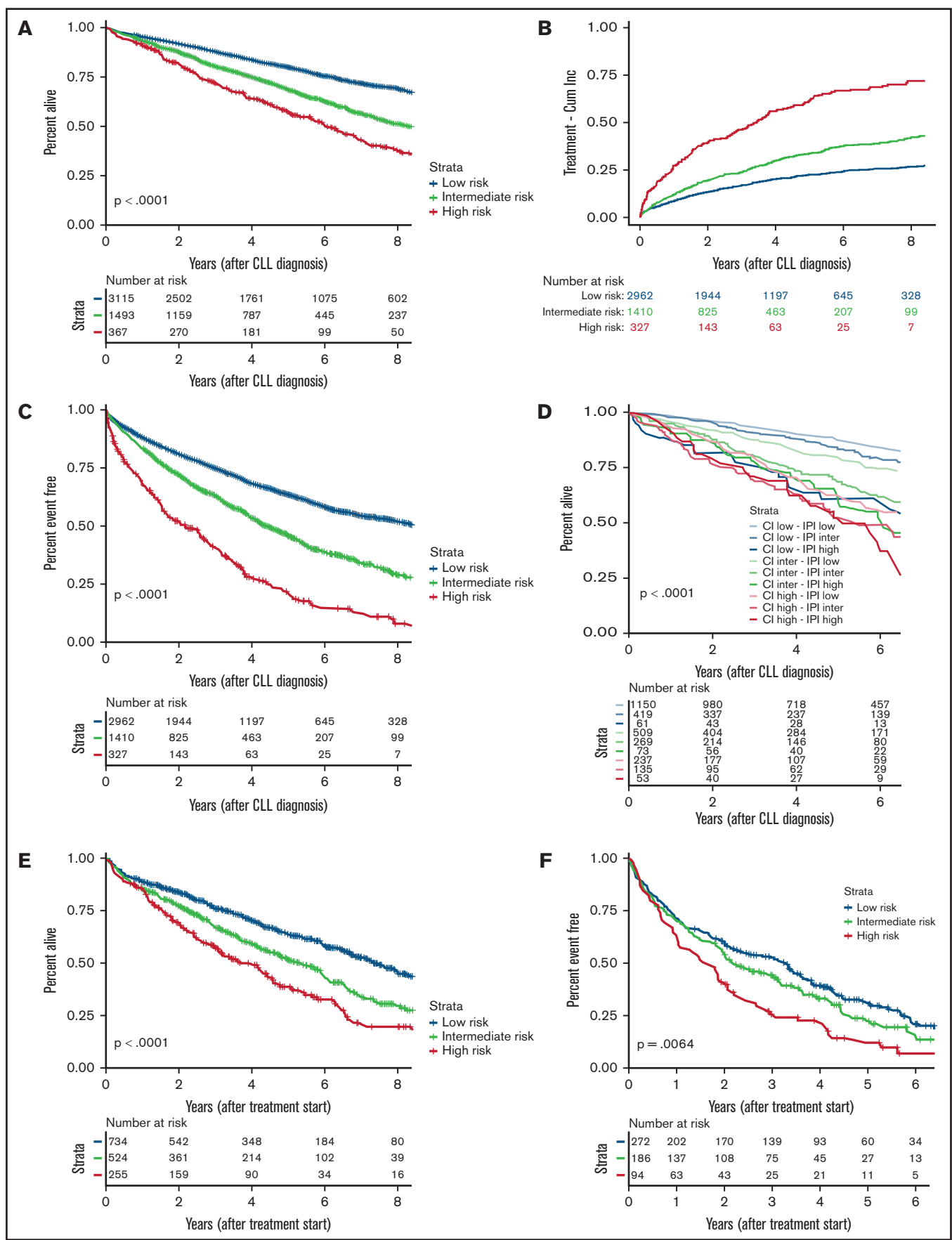
Patients are grouped by CLL comorbidity index category.

friendly tool designed for clinical practice.<sup>10</sup> We identified vascular, upper gastrointestinal, and endocrine CIRS categories as the most strongly associated with event-free survival (EFS) from time of treatment. These categories were combined to create the CLL-CI score, with each comorbidity category adding 1 point (0 = low risk; 1 = intermediate risk; 2-3 = high risk). The present study further investigates the clinical impact of the CLL-CI on EFS, time to first

treatment (TTFT), and OS, at diagnosis and initiation of therapy, using a population-based cohort.

## Methods

All patients registered with CLL in the Danish National CLL Register between 2008 and 2018 were included in the study.<sup>11</sup> Baseline



**Figure 1. Survival and treatment outcomes according to CLL-CI.** (A) OS from time of diagnosis. (B) TTFT from time of diagnosis, treating death as a competing risk. (C) EFS from time of diagnosis. (D) OS from time of diagnosis further stratified by CLL-IPI. (E) OS2 from time of first-line treatment. (F) EFS2 from time of first-line treatment. The x-axis in (B) and (D) differs from other panels.

characteristics and information on first therapy were available from the CLL register, and further detailed information on treatment was obtained for a geographically defined subgroup through review of medical records. Information on comorbidities was collected from the Danish National Prescription Register and the Danish National Patient Register with look-back periods of 1 year and up to 20 years, respectively.<sup>12,13</sup> Codes corresponding to comorbidities are listed in supplemental Table 1.<sup>3,10</sup> CLL-CI was calculated at time of diagnosis and at time of first-line treatment. Data were linked across registers using a personal identification number unique to every citizen.<sup>14</sup>

Analyses were stratified based on CLL-CI score.  $\chi^2$  and Kruskal–Wallis tests were performed to test for differences in characteristics across groups. Kaplan–Meier survival curves with associated *P* values were computed for OS and EFS (defined as time to death or next therapy) from 1 month after diagnosis and from the time of initiation of first-line therapy (OS2 and EFS2). Cumulative incidence curves and Fine-Gray risk regressions were used to study TTFT from time of diagnosis, treating death as a competing risk. Hazard ratios were calculated using multivariable Cox regressions for OS, EFS, and TTFT from diagnosis, adjusting for sex and CLL International Prognostic Index (CLL-IPI),<sup>15</sup> both as score and using the individual components of the CLL-IPI. Multivariable Cox regressions were performed for OS2 and EFS2, adjusting for age, immunoglobulin heavy-chain variable region gene (IGHV) mutational status, and treatment regimen. Data analysis was performed using SAS software, version 9.4 (SAS Institute, Cary, NC) and R software version 3.5.2 on servers hosted by the Danish Health Data Authority.

The study was approved by the Danish Health and Medicine Authorities (jr. no. 3-3013-1141/1) and the Danish Data Protection Agency (jr. no. RH-2015-96 03856).

## Results and discussion

Baseline characteristics at time of CLL diagnosis for 4975 patients included in the study are presented in Table 1. In all, 63%, 30%, and 7% of patients had low, intermediate, and high risk CLL-CI, respectively. CLL-CI was associated with OS, with a median OS not reached, 8.5 years, and 6.0 years for low-, intermediate-, and high-risk patients, respectively (Figure 1A). CLL-CI was associated with TTFT, with 56% of high-risk patients being treated within 4 years compared with 20% to 30% of low- and intermediate-risk patients (Figure 1B). All comorbidity categories were individually associated with TTFT (supplemental Figure 1). CLL-CI was associated with EFS, with a median EFS of 8.4, 4.4, and 2.2 years for low-, intermediate-, and high-risk patients, respectively (Figure 1C). The association with OS, EFS, and TTFT was independent of sex and CLL-IPI (supplemental Tables 2 and 3). Patients with high risk in either or both CLL-CI and CLL-IPI had the poorest OS (Figure 1D).

In total, 1513 patients received first-line treatment during follow-up (supplemental Table 4). Data from medical record review were available for 552 patients; information on targeted therapy was only available for these patients, of whom 6% received targeted agents. CLL-CI was associated with OS2 independently of IGHV status, age, and treatment regimen, with a median OS2 of 8.2, 6.0, and 4.4 years for low-, intermediate-, and high-risk patients, respectively (supplemental Table 5; Figure 1E). Similarly, CLL-CI was associated with

EFS2, with a median EFS2 of 3.6, 2.9, and 1.9 years, respectively, although it did not retain significance after adjusting for IGHV status, age, and treatment regimen (supplemental Table 5; Figure 1F).

In this study, patients were assigned treatment regimens by treating physicians based on age, comorbidity, and patient preference. Differences in survival by type of treatment, particularly patients treated with targeted therapies, who were underrepresented in this study, could influence survival and limit the generalizability of these results. Whereas our findings demonstrate that CLL-CI can be applied also for cohorts predominantly treated with chemoimmunotherapy, the extrapolation of our results may be limited by the small number receiving targeted agents. However, 28% of patients receiving second-line treatment were treated with targeted agents.

In addition to associating with EFS and OS from time of diagnosis independently of CLL-IPI, we identified high-risk CLL-CI patients as having a shorter TTFT compared with low- and intermediate-risk patients. The underlying cause remains to be investigated; however, adverse prognostic biomarkers were more common in the CLL-CI high-risk group, suggesting the possibility of underlying mechanistic associations between comorbidities and aggressiveness of CLL.<sup>16</sup> This could be due to underlying factors that influence both CLL biology and the development of comorbidities or the possibility that aggressive CLL causes comorbidities. Our working hypothesis is that the biological link among the CLL-CI, high-risk biomarkers, and shorter survival is chronic inflammation and immune dysfunction caused by metabolic syndrome, vascular disease, and dysbiosis. The endocrine category of the CLL-CI includes diabetes and obesity, which are features of metabolic syndrome, a well-established risk factor for the development of multiple cancer types that has been shown to influence cancer biology and the tumor microenvironment.<sup>17</sup> Furthermore, most conditions included in the vascular category are also related to atherosclerosis and dyslipidemia, other features of metabolic syndrome. Major vascular events have also been demonstrated to accelerate cancer progression by modulating the immune system.<sup>18</sup> Upper gastrointestinal disease, the third category in the CLL-CI, is associated with alterations in the intestinal microbiome.<sup>19</sup> Decreased intestinal microbial biodiversity may be more frequent in patients with CLL.<sup>20,21</sup> It is associated with inferior response to immunotherapy in patients with certain cancers<sup>22</sup> and possibly in patients with CLL who receive chemotherapy.<sup>23</sup> We are currently investigating these hypotheses.

It is also important to consider the CLL-CI in the context of other prognostic scales. Several prognostic indices have been developed for CLL that are specific to treatment settings and therapeutic classes but do not include a measure of comorbidity.<sup>24–27</sup> Although the CLL-CI does add prognostic information to the CLL-IPI for all therapies currently evaluated, assessment of the influence of comorbidities alongside other prognostic scales is needed. Although prognostic factors should remain key for treatment decisions, clinical trial data from pivotal phase 3 trials with novel targeted agents versus chemoimmunotherapy should be reanalyzed with addition of CLL-CI to assess the optimal treatment of patients according to CLL-CI. Ultimately, however, prospective clinical trials are needed to define the optimal treatment of these patients.

In this study, we illustrate the feasibility of assessing the CLL-CI through register data. Findings support the use of the CLL-CI in both research and clinical practice as a quick and easy-to-use tool for assessing comorbidity in newly diagnosed patients with CLL as well as in patients requiring treatment.

## Acknowledgments

The authors thank Erika Nodin for her assistance in identifying surgical procedure codes and Caspar da Cunha-Bang and Klaus Rostgaard for comments that improved this study.

This work was supported in part by grants from Novo Nordisk Foundation (NNF16OC0019302) (C.U.N.) and Neye Fonden (H.H.). A.V.D. is a Leukemia and Lymphoma Society Clinical Scholar (#2319-19).

## Authorship

Contribution: E.C.R., M.J.G., H.H., A.V.D., and C.U.N. designed the research; H.F. and C.U.N. contributed patients; E.C.R. and N.V. collected the data; E.C.R. analyzed the data; E.C.R. and M.J.G. wrote the first draft of the paper; and all authors discussed the results and contributed to the final manuscript.

Conflict-of-interest disclosure: E.C.R. received consultancy fees or travel grants from AbbVie, Janssen Pharmaceuticals, and AstraZeneca. H.F. received support outside this work from Alexion, Gilead, AbbVie, Janssen Pharmaceuticals, and Novartis. H.H.

received support from Neye Fonden outside this work. A.V.D. received consulting fees from AstraZeneca, AbbVie, BeiGene, Verastem Oncology, Genentech, TG Therapeutics, Nurix, Bayer Oncology, and Pharmacyclics and has ongoing research funding from AstraZeneca, Takeda Oncology, Gilead Sciences, Bayer Oncology, Genentech, SecuraBio, MEI, TG Therapeutics, and Bristol Myers Squibb all outside of this work. C.U.N. received support from Novo Nordisk Foundation (NNF16OC0019302) within this work and received support, consultancy fees, or travel grants from AbbVie, Gilead, Janssen Pharmaceuticals, Roche, CSL Behring, Acerta, Genmab, Sunesis Pharmaceuticals, and AstraZeneca outside this work. The remaining authors declare no competing financial interests.

ORCID profiles: E.C.R., 0000-0002-4199-772X; H.F., 0000-0001-8905-0220; H.H., 0000-0002-4436-6798; C.U.N., 0000-0001-9880-5242.

Correspondence: Carsten U. Niemann, Department of Hematology, Rigshospitalet, Copenhagen University Hospital, Blegdamsvej 9, DK-2100 Copenhagen, Denmark; e-mail: carsten.uoft.niemann@regionh.dk.

## References

1. Hallek M, Cheson BD, Catovsky D, et al. iwCLL guidelines for diagnosis, indications for treatment, response assessment, and supportive management of CLL. *Blood*. 2018;131(25):2745-2760.
2. Thurmes P, Call T, Slager S, et al. Comorbid conditions and survival in unselected, newly diagnosed patients with chronic lymphocytic leukemia. *Leuk Lymphoma*. 2008;49(1):49-56.
3. Salvi F, Miller MD, Grilli A, et al. A manual of guidelines to score the modified cumulative illness rating scale and its validation in acute hospitalized elderly patients. *J Am Geriatr Soc*. 2008;56(10):1926-1931.
4. Gordon MJ, Churnetski M, Alqahtani H, et al. Comorbidities predict inferior outcomes in chronic lymphocytic leukemia treated with ibrutinib. *Cancer*. 2018;124(15):3192-3200.
5. Gordon MJ, Huang J, Chan RJ, Bhargava P, Danilov AV. Medical comorbidities in patients with chronic lymphocytic leukaemia treated with idelalisib: analysis of two large randomised clinical trials. *Br J Haematol*. 2021;192(4):720-728.
6. Rigolin GM, Cavallari M, Quaglia FM, et al. In CLL, comorbidities and the complex karyotype are associated with an inferior outcome independently of CLL-IPI. *Blood*. 2017;129(26):3495-3498.
7. Kittai AS, Huang Y, Gordon M, et al. Comorbidities predict inferior survival in patients receiving chimeric antigen receptor T-cell therapy for diffuse large B-cell lymphoma: a multicenter analysis. *Biol Blood Marrow Transplant*. 2021;27(1):46-52.
8. Rotbain EC, Niemann CU, Rostgaard K, da Cunha-Bang C, Hjalgrim H, Frederiksen H. Mapping comorbidity in chronic lymphocytic leukemia: impact of individual comorbidities on treatment, mortality, and causes of death. *Leukemia*. 2021;35(9):2570-2580.
9. Strati P, Parikh SA, Chaffee KG, et al. Relationship between co-morbidities at diagnosis, survival and ultimate cause of death in patients with chronic lymphocytic leukaemia (CLL): a prospective cohort study. *Br J Haematol*. 2017;178(3):394-402.
10. Gordon MJ, Kaempf A, Sitlinger A, et al. The chronic lymphocytic leukemia comorbidity index (CLL-CI): a three-factor comorbidity model. *Clin Cancer Res*. 2021;27(17):4814-4824.
11. da Cunha-Bang C, Geisler CH, Enggaard L, et al. The Danish National Chronic Lymphocytic Leukemia Registry. *Clin Epidemiol*. 2016;8:561-565.
12. Lyng E, Sandegaard JL, Rebolj M. The Danish National Patient Register. *Scand J Public Health*. 2011;39(7 suppl):30-33.
13. Kildemoes HW, Sørensen HT, Hallas J. The Danish National Prescription Registry. *Scand J Public Health*. 2011;39(7 suppl):38-41.
14. Pedersen CB. The Danish Civil Registration System. *Scand J Public Health*. 2011;39(7 suppl):22-25.
15. International CLL-IPI working group. An international prognostic index for patients with chronic lymphocytic leukaemia (CLL-IPI): a meta-analysis of individual patient data. *Lancet Oncol*. 2016;17(6):779-790.
16. Smolej L, Brychtová Y, Cmunt E, et al; Czech CLL Study Group. Low-dose fludarabine and cyclophosphamide combined with rituximab in the first-line treatment of elderly/comorbid patients with chronic lymphocytic leukaemia/small lymphocytic lymphoma (CLL/SLL): long-term results of project Q-lite by the Czech CLL Study Group. *Br J Haematol*. 2021;193(4):769-778.
17. Brown KA. Metabolic pathways in obesity-related breast cancer. *Nat Rev Endocrinol*. 2021;17(6):350-363.

18. Koelwyn GJ, Newman AAC, Afonso MS, et al. Myocardial infarction accelerates breast cancer via innate immune reprogramming. *Nat Med.* 2020;26(9):1452-1458.
19. Bruno G, Zaccari P, Rocco G, et al. Proton pump inhibitors and dysbiosis: current knowledge and aspects to be clarified. *World J Gastroenterol.* 2019;25(22):2706-2719.
20. Kawari M, Akhtar M, Sager M, et al. Alterations of gut microbiome in untreated chronic lymphocytic leukemia (CLL): future therapeutic potentials. *Blood.* 2019;134(suppl 1):5455-5455.
21. Faitova T, Svanberg ER, da Cunha-Bang C, et al. The gut microbiome in patients with chronic lymphocytic leukemia. *EHA Library.* 2021;325-373; EP613.
22. Matson V, Fessler J, Bao R, et al. The commensal microbiome is associated with anti-PD-1 efficacy in metastatic melanoma patients. *Science.* 2018;359(6371):104-108.
23. Pflug N, Kluth S, Vehreschild JJ, et al. Efficacy of antineoplastic treatment is associated with the use of antibiotics that modulate intestinal microbiota. *Oncot Immunology.* 2016;5(6):e1150399.
24. González-Gascón-y-Marín I, Muñoz-Novas C, Figueroa I, et al; Grupo Español de Leucemia Linfática Crónica and Grupo Cooperativo Español de Citogenética Hematológica. Prognosis assessment of early-stage chronic lymphocytic leukemia: are we ready to predict clinical evolution without a crystal ball? *Clin Lymphoma Myeloma Leuk.* 2020;20(8):548-555.e4.
25. Ahn IE, Tian X, Ipe D, et al. Prediction of outcome in patients with chronic lymphocytic leukemia treated with ibrutinib: development and validation of a four-factor prognostic model. *J Clin Oncol.* 2021;39(6):576-585.
26. Gordon MJ, Sitlinger A, Salous T, et al. A simplified prognostic index for chronic lymphocytic leukemia treated with ibrutinib: results from a multicenter retrospective cohort study. *Leuk Res.* 2020;89:106302.
27. Soumerai JD, Ni A, Darif M, et al. Prognostic risk score for patients with relapsed or refractory chronic lymphocytic leukaemia treated with targeted therapies or chemoimmunotherapy: a retrospective, pooled cohort study with external validations. *Lancet Haematol.* 2019;6(7):e366-e374.