

# MCT1 is a predictive marker for lenalidomide maintenance therapy in multiple myeloma

Jacob Stroh,<sup>1,2,\*</sup> Anja Seckinger,<sup>3,4,\*</sup> Michael Heider,<sup>1,2,\*</sup> Martina Rudelius,<sup>5</sup> Ruth Eichner,<sup>1,2</sup> Markus Schick,<sup>6</sup> Jolanta Slawska,<sup>1,6</sup> Martina Emde-Rajaratnam,<sup>3,4</sup> Hans Salwender,<sup>7-9</sup> Uta Bertsch,<sup>10</sup> Hartmut Goldschmidt,<sup>10,11</sup> Katja Weisel,<sup>12</sup> Christof Scheid,<sup>13,14</sup> Ulrich Keller,<sup>6,15-17</sup> Dirk Hose,<sup>3,4,†</sup> and Florian Bassermann<sup>1,2,15,16,†</sup>

<sup>1</sup>Department of Medicine III, Klinikum rechts der Isar, and <sup>2</sup>TranslATUM, Center for Translational Cancer Research, Technical University of Munich, Munich, Germany; <sup>3</sup>Department of Hematology and Immunology, Myeloma Center Brussels, and <sup>4</sup>Labor für Myelomforschung, Vrije Universiteit Brussel (VUB), Jette, Belgium; <sup>5</sup>Institute of Pathology, Ludwigs Maximilians University, Munich, Germany; <sup>6</sup>Department of Hematology, Oncology, and Tumor Immunology, Charité-Universitätsmedizin, Berlin, Germany; <sup>7</sup>Asklepios Tumorzentrum Hamburg, Hamburg, Germany; <sup>8</sup>AK Altona, Hamburg, Germany; <sup>9</sup>AK St. Georg, Hamburg, Germany; <sup>10</sup>Department of Internal Medicine V, and <sup>11</sup>National Center for Tumor Diseases (NCT), Heidelberg University Hospital, Heidelberg, Germany; <sup>12</sup>Department of Medicine II, University Medical Center Hamburg-Eppendorf, Hamburg, Germany; <sup>13</sup>Department of Internal Medicine I, and <sup>14</sup>Center of Integrated Oncology Cologne Bonn, University of Cologne, Cologne, Germany; <sup>15</sup>German Cancer Consortium (DKTK), Heidelberg, Germany; <sup>16</sup>German Cancer Research Center (DKFZ), Heidelberg, Germany; and <sup>17</sup>Max-Delbrück Center for Molecular Medicine, Berlin, Germany

## Key Points

- High gene expression levels of *MCT1* are associated with reduced PFS and OS in MM with lenalidomide-based maintenance therapy.
- Overexpression of *MCT1* impairs efficacy of lenalidomide in human myeloma cells in vitro and in vivo.

Biomarkers that predict response to lenalidomide maintenance therapy in patients with multiple myeloma (MM) have remained elusive. We have shown that immunomodulatory drugs (IMiDs) exert anti-MM activity via destabilization of MCT1 and CD147. In this study, cell samples of 654 patients with MM who received lenalidomide (n = 455), thalidomide (n = 98), or bortezomib (n = 101) maintenance were assessed by gene expression profiling and RNA sequencing, followed by correlation of *MCT1* and *CD147* expression with data for progression-free survival (PFS) and overall survival (OS). Patients with high expression levels of *MCT1* showed significantly reduced PFS (31.9 months vs 48.2 months in *MCT1*<sup>high</sup> vs *MCT1*<sup>low</sup>;  $P = .03$ ) and OS (75.9 months vs not reached [NR] in *MCT1*<sup>high</sup> vs *MCT1*<sup>low</sup>;  $P = .001$ ) in cases with lenalidomide maintenance, whereas *MCT1* expression had no significant impact on PFS or OS in cases with bortezomib maintenance. We validated the predictive role of *MCT1* for IMiD-based maintenance in an independent cohort of patients who received thalidomide (OS, 83.6 months vs NR in *MCT1*<sup>high</sup> vs *MCT1*<sup>low</sup>;  $P = .03$ ). Functional validation showed that *MCT1* overexpression in human MM cell lines significantly reduced the efficacy of lenalidomide, whereas no change was observed with bortezomib treatment, either in vitro or in a MM xenograft model. Our findings have established *MCT1* expression as a predictive marker for response to lenalidomide-based maintenance in patients with MM.

## Introduction

Multiple myeloma (MM) is a heterogenous clonal plasma cell malignancy that accounts for ~10% of all hematologic malignancies.<sup>1</sup> The introduction of novel substances, such as the immunomodulatory drugs

Submitted 15 June 2021; accepted 22 October 2021; prepublished online on *Blood Advances* First Edition 12 November 2021; final version published online 18 January 2022. DOI 10.1182/bloodadvances.2021005532.

\*J.S., A.S., and M.H. contributed equally to this study.

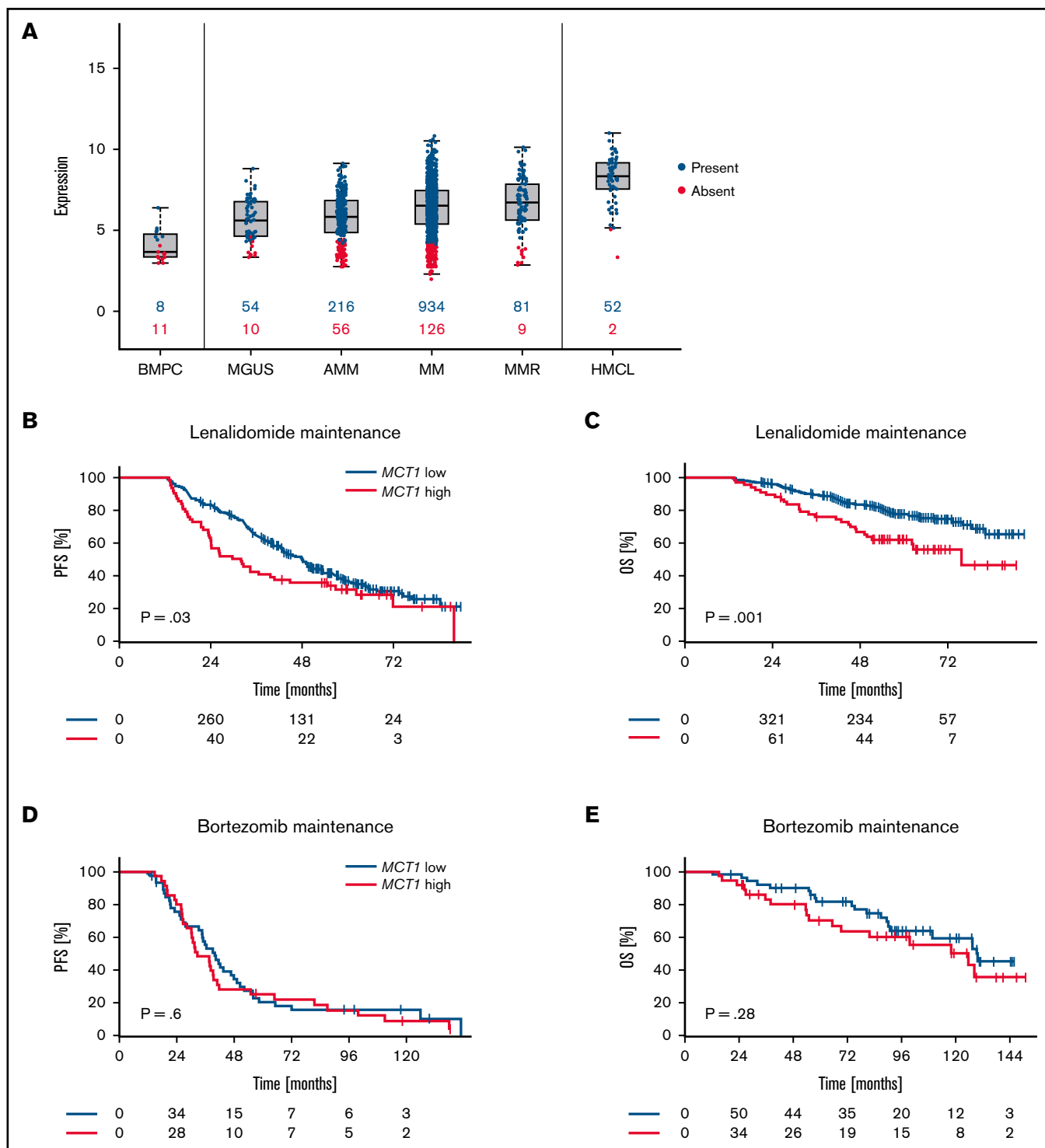
†D.H. and F.B. contributed equally to this study.

The expression data were deposited in ArrayExpress (accession numbers E-MTAB-4715, E-MTAB-4717, E-MTAB-5212, E-TABM-937, and E-TABM-1088).

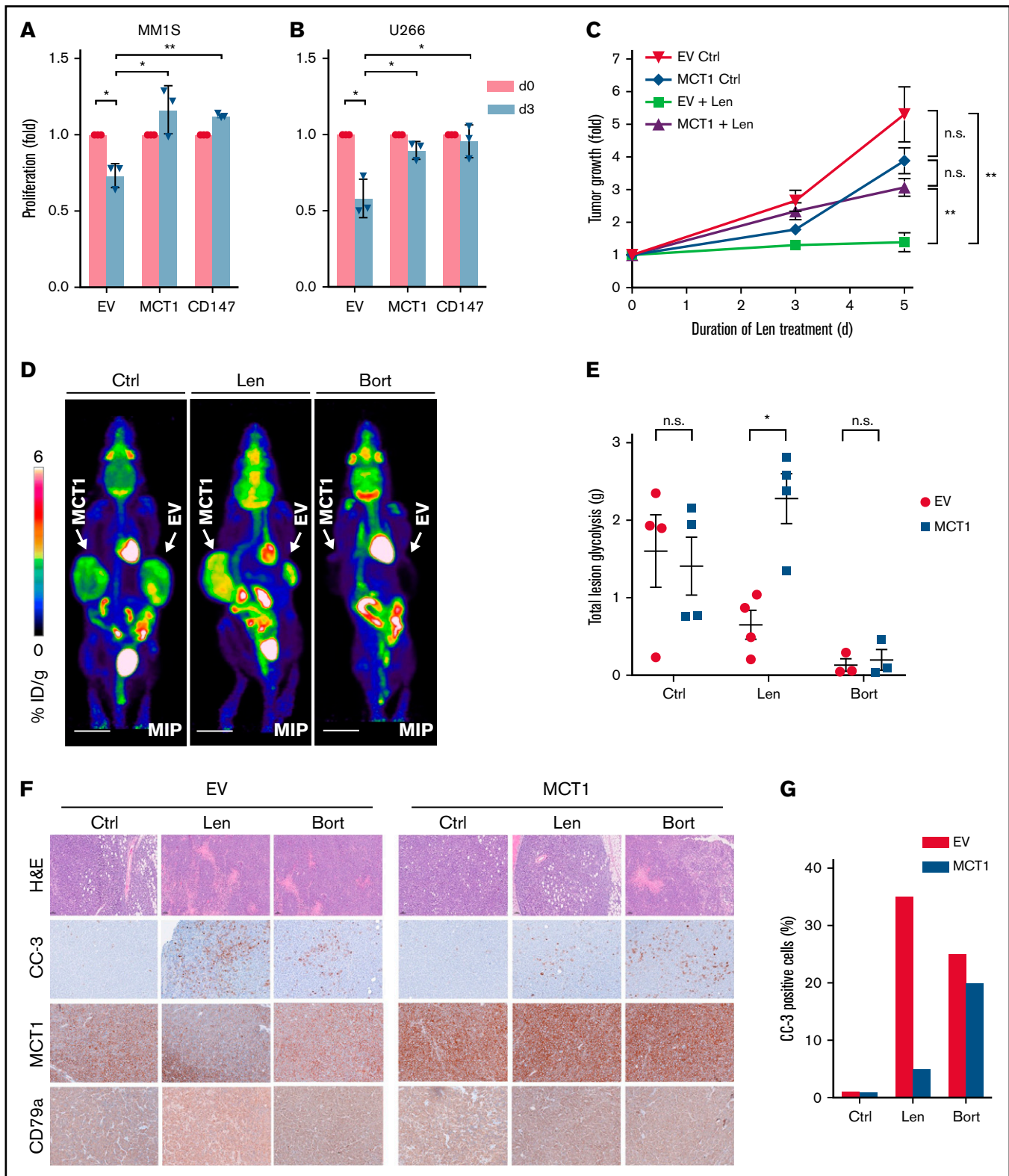
Requests for data sharing may be submitted to Florian Bassermann (florian.bassermann@tum.de).

The full-text version of this article contains a data supplement.

© 2022 by The American Society of Hematology. Licensed under Creative Commons Attribution-NonCommercial-NoDerivatives 4.0 International (CC BY-NC-ND 4.0), permitting only noncommercial, nonderivative use with attribution. All other rights reserved.



**Figure 1. Expression of *MCT1* determines PFS and OS in patients receiving IMiD-based maintenance therapy.** (A) *MCT1* gene expression in plasma cell disorders (n = 1486) and normal bone marrow plasma cells (BMPC, n = 19). MGUS, monoclonal gammopathy of unknown significance; AMM, asymptomatic MM; MM, previously untreated, therapy-requiring MM; MMR, relapsed/refractory MM; and HMCL, human myeloma cell line. Numbers in blue (red) indicate the number of patients expressing (not expressing) *MCT1*. (B-E) Landmark analysis of patients with MM who underwent maintenance treatment after autologous stem cell transplantation. Expression of *MCT1* was assessed by gene expression profiling in CD138-purified myeloma cell samples and correlated with PFS and OS data. P-values are log-rank. (B) PFS of 455 patients who underwent lenalidomide maintenance therapy in the GMMG-MM5-trial (31.9 months vs 48.2 months; *MCT1*<sup>high</sup> vs *MCT1*<sup>low</sup>). (C) OS of 455 patients who underwent lenalidomide maintenance therapy in the GMMG-MM5-trial (75.9 months vs not reached months; *MCT1*<sup>high</sup> vs *MCT1*<sup>low</sup>). (D) PFS of 62 patients who underwent bortezomib maintenance therapy in the GMMG-MM4-trial (39.8 months vs 32.6 months; *MCT1*<sup>high</sup> vs *MCT1*<sup>low</sup>). (E) OS of 101 patients who underwent bortezomib maintenance therapy in the GMMG-MM4-trial, 125.8 months vs 129.8 months; *MCT1*<sup>high</sup> vs *MCT1*<sup>low</sup>).



**Figure 2. Overexpression of MCT1 attenuates lenalidomide cytotoxicity in vitro and in vivo.** (A-B) Cell proliferation analysis of MM1S (A) and U266 (B) cells, which were infected with lentivirus via control constructs (empty vector [EV]) or constructs to induce MCT1 or CD147 expression, treated with dimethyl sulfoxide (DMSO) or 10  $\mu$ M lenalidomide for 72 h. (C) Quantification of tumor growth during lenalidomide or vehicle control treatment using caliper measurements (Ctrl, Len: n = 4 tumors). Xenograft tumors from U266 cells expressing MCT1 or the EV control. (D) Positron emission tomography (PET) images, using  $^{18}$ F-fluorodeoxyglucose, of representative immunocompromised NOD-SCID mice bearing xenograft tumors expressing MCT1 or the EV control. Images were taken after 7 days of respective treatment. Arrows

(IMiDs) lenalidomide and thalidomide, proteasome inhibitors, and monoclonal antibodies, has greatly improved treatment response and survival within the past 2 decades.<sup>1</sup> Transplantation-eligible, fit patients undergo 1 or 2 cycles of high-dose melphalan and autologous stem cell transplantation subsequent to several cycles of induction therapy.<sup>2</sup> Lenalidomide maintenance therapy has improved progression-free survival (PFS) in this setting; however, a beneficial effect of lenalidomide maintenance therapy on overall survival (OS) has been inconsistent in several studies.<sup>3–8</sup> Despite the high need for predictive markers of response to lenalidomide maintenance therapy, they have remained elusive.

We have shown that IMiDs exert anti-myeloma activity via destabilization of different, mostly metabolically active transmembrane complexes by means of interfering with the quality control function of CRBN, in addition to the established degradation of neosubstrates, such as IKZF1 and IKZF3.<sup>9–12</sup> Among these, CD147 and MCT1 form a heterodimeric transmembrane complex that functions as a transporter of monocarboxylates, such as lactate, a function of vital importance for the survival of cancer cells, particularly within the hypoxic environment of the bone marrow.<sup>13,14</sup> MCT1 and CD147 are upregulated in MM and have been shown to be essential for proliferation and survival of MM cells.<sup>15–17</sup> Persistence of MCT1 and CD147 expression upon lenalidomide treatment is associated with IMiD resistance in samples from patients with primary MM samples, and overexpression of the complex attenuates IMiD efficacy in MM xenograft models.<sup>9</sup> Against this background, we investigated gene expression levels of *MCT1* and *CD147* in 654 patients with MM treated with lenalidomide, thalidomide, or bortezomib maintenance and found that high *MCT1* expression significantly correlated with short PFS and OS in patients who receive IMiD maintenance therapy. These findings were functionally validated in human multiple myeloma cell lines (HMCLs) and in MM xenograft models.

## Methods

CD138-purified myeloma cell samples of 1486 patients with plasma cell disorders at different stages of MM were investigated by gene expression profiling (GEP), using U133 2.0 plus DNA microarrays for expression of *MCT1* (202235\_at) and *CD147* (208677\_s\_at).<sup>18,19</sup> The presence and absence of gene expression were determined by using the presence-absence calls with negative probesets (PANP) algorithm.<sup>20</sup> “Low” and “high” levels of expression were determined by using maximally selected rank statistics. Gene expression from the study patients was validated by RNA sequencing (RNA-seq), which was performed as previously described.<sup>18,19,21</sup> Of those patients, 654 received high-dose melphalan and autologous stem cell transplantation and maintenance with bortezomib ( $n = 101$ ), thalidomide ( $n = 98$ ), or lenalidomide ( $n = 455$ ) as the first-line treatment within 2 phase 3 clinical trials of the German-speaking Myeloma Multicenter Group (GMMG) (GMMG-HD4 and GMMG-MM5; EudraCT 2004-000944-26 and 2010-019173-16). The correlation of *CD147* and *MCT1* with PFS

and OS was determined. Survival curves and median time to progression were computed with nonparametric survival estimates for censored data using the Kaplan-Meier method. Differences between the curves were tested using the G-p log-rank test. Landmark analysis was performed by defining an alternative starting point (landmark) at 12 months. The study was in accordance with the ethical standards of the participating institutions and national research committee and with the 1964 Helsinki Declaration and its later amendments or comparable ethical standards. Written informed consent was obtained from each patient before participation in the studies.

The HMCLs MM1S (ATCC: CRL-2974) and U266 (DSMZ: ACC-9) cells were cultured in RPMI-1640 (Gibco) with 10% heat-inactivated fetal bovine serum and 1% penicillin-streptomycin. Cells with lentiviral overexpression of *CD147* or *MCT1* were generated as previously described.<sup>9</sup> The cells were treated with lenalidomide (Sigma) or bortezomib (Sigma) at the concentrations indicated in the respective figure legends, and proliferation was assessed by using trypan blue exclusion.

For xenograft experiments  $0.6 \times 10^7$  MM cells were mixed with Matrigel Basement Membrane Matrix (BD Bioscience) at a 1:1 ratio and injected subcutaneously into the opposite flanks of female NOD SCID mice at 8 to 10 weeks of age (Janvier). After tumor engraftment, the mice were randomly assigned to receive lenalidomide (30 mg/kg) in 0.5% carboxymethylcellulose and 0.25% Tween 80 in deionized water, by daily oral gavage; IV bortezomib (0.5 mg/kg every 72 h); or vehicle control and imaged by <sup>18</sup>F-fluorodeoxyglucose positron emission tomography/magnetic resonance imaging on day 7 of treatment. Tumor growth was monitored by caliper measurements. The mice were housed in specific pathogen-free conditions, and the animal experiments were conducted with permission from the District Government of Upper Bavaria. Immunohistochemistry, cell extract preparation, and western blot analysis were performed as previously described.<sup>9,10,22</sup>

## Results and discussion

### Expression of *MCT1* determines PFS and OS in patients receiving IMiD-based maintenance therapy

First, we performed GEP of MM samples of 1486 patient to determine *MCT1* expression in plasma cell disorders at different stages of the disease. Expression was validated by RNA-seq (supplemental Figure 1A). *MCT1* expression was not only elevated when compared with normal plasma cells, but increased steadily with the progression state of plasma cell disorders, with the highest levels observed in patients with relapsed MM and in MM cell lines (Figure 1A).

GEP and RNA-seq correlation with PFS and OS data of 455 patients who received maintenance treatment with the IMiD lenalidomide showed significantly reduced PFS (31.9 months vs 48.2 months in *MCT1*<sup>high</sup> vs *MCT1*<sup>low</sup>;  $P = .03$ ) and OS (75.9 months vs not reached [NR] in *MCT1*<sup>high</sup> vs *MCT1*<sup>low</sup>;  $P = .001$ ) in patients with

**Figure 2 (continued)** indicate tumors. The color scale indicates the percentage of injected dose per gram (% ID/g). Bars represent 10 mm. (E) Total lesion glycolysis of tumors determined by PET-MRI on day 7 after respective treatments. (F) Representative immunohistochemical analysis of tumors derived from the mice shown in panel D, with histomorphology visualized with hematoxylin-eosin staining and expression of cleaved caspase 3 (CC-3), MCT1, and CD79a. Analysis was performed on 10 high-power fields for each stain. Bars represent 100  $\mu$ m. (G) Quantification of CC-3 staining shown in panel F. Data are expressed as means  $\pm$  standard deviation. n.s., not significant; \* $P < .05$ , \*\* $P < .01$ , by 1-sample  $t$  test or Student  $t$  test.

high expression levels of *MCT1* (Figure 1B-C). Patients treated in an independent cohort by maintenance with the IMiD thalidomide, likewise showed significantly shorter OS (83.6 months vs NR in *MCT1*<sup>high</sup> vs *MCT1*<sup>low</sup>;  $P = .03$ ) with high *MCT1* expression levels, and displayed a trend toward reduced PFS (34.8 months vs 43.7 months in *MCT1*<sup>high</sup> vs *MCT1*<sup>low</sup>;  $P = .23$ ) that was not statistically significant (supplemental Figure 2A-B). These findings validate *MCT1* as a biomarker for IMiD maintenance in an independent cohort. The somewhat lower predictive effect of *MCT1* expression on thalidomide maintenance therapy, as compared with lenalidomide, corresponds well to a lower activity of this drug in terms of destabilizing *MCT1*.<sup>9</sup> By contrast, *MCT1* expression had no effect on PFS (39.8 months vs 32.6 months in *MCT1*<sup>high</sup> vs *MCT1*<sup>low</sup>;  $P = .6$ ) and OS (125.8 months vs 129.8 months in *MCT1*<sup>high</sup> vs *MCT1*<sup>low</sup>;  $P = .28$ ; Figure 1D-E) in patients receiving bortezomib-based maintenance, thus underscoring a specific prognostic value of *MCT1* expression on lenalidomide maintenance. *MCT1* expression was not associated with high-risk chromosomal aberrations, Revised-International Staging System score, or GEP-based high-risk scores. Expression of *CD147* was not predictive of the outcome of lenalidomide maintenance (supplemental Figure 3A-B). This finding is in line with a low variation of *CD147* expression at the mRNA level (supplemental Figures 1B and 3C) and previous observations demonstrating a posttranslational dependency of *CD147* protein expression on *MCT1* expression.<sup>13,15,23</sup> It is therefore conceivable, that a dependency of lenalidomide maintenance on *CD147* would become evident only on the protein level. These protein data, however, are not available for the investigated cohort of patients with MM.

### Overexpression of *MCT1* attenuates lenalidomide cytotoxicity in vitro and in vivo

Next, we validated the findings in cell culture models of HMCLs. Two cell lines, MM1S and U266 were infected with lentivirus to induce forced protein expression of both *MCT1* or *CD147* and subjected to lenalidomide or bortezomib treatment. Indeed, overexpression of *MCT1* in MM cells significantly reduced sensitivity to lenalidomide treatment (Figure 2A-B), thereby functionally validating the predictive significance of *MCT1*. In contrast to the patient-derived data outlined thus far, high *CD147* protein expression also attenuated lenalidomide efficacy in this model, again underscoring the notion that *CD147* requires analysis on the protein level rather than on the mRNA level. By contrast, the efficacy of the proteasome inhibitor bortezomib was not affected by overexpression of *MCT1* or *CD147* (supplemental Figure 4A-B).

To confirm these findings in vivo, we established a xenograft model using U266 cells with control (empty vector) or *MCT1* overexpression. After tumor engraftment mice were randomly assigned to receive lenalidomide, bortezomib, or control treatment. In line with our in vitro data, induced overexpression of *MCT1* protected the tumors from the anti-myeloma activity of lenalidomide (Figure 2C-E; supplemental Figure 4D-F). Again, the cytotoxic effects of bortezomib treatment were not impaired by overexpression of *MCT1* (Figure 2D-E; supplemental Figure 4C-F). Both lenalidomide and bortezomib treatment resulted in the induction of apoptosis. While the induction of apoptosis upon lenalidomide treatment was impaired in tumors with overexpression of *MCT1*, levels of cleaved caspase 3 remained unchanged by bortezomib treatment (Figure 2F-G).

We have identified *MCT1* as a predictive marker for the efficacy of lenalidomide maintenance therapy in MM. To the best of our knowledge, *MCT1* marks the first functionally validated biomarker for this therapeutic setting in MM. Based on our findings, patients with high expression levels of *MCT1* have a reduced response to lenalidomide-based maintenance therapy and could benefit from other maintenance regimens, including proteasome inhibitors and CD38-targeting antibodies.

### Acknowledgments

The authors thank Markus Mittelhäuser and Hannes Rolbieski for acquisition of positron emission tomographic/magnetic resonance images; Markus Utzt for cell sorting; Susanne Kossatz for suggestions regarding imaging analyses; Torsten Haferlach and Claudia Haferlach for providing cells of patients with primary MM; Maria Dörner, Ewelina Nickel, Birgit Schneiders, and Tomi Bähr-Ivacevic for excellent technical assistance; the Genomics Core Facility at European Molecular Biology Laboratory (EMBL), Heidelberg, Germany; the Transcriptomics Platform, INSERM, Montpellier, France; and all participating GMMG investigators and centers.

This work was supported by grants from the European Research Commission (project BCM-UPS, grant 682473) (F.B.), Deutsche Forschungsgemeinschaft grants SFB1335 (F.B. and U.K.) BA 2851/6-1 (F.B.), SFB824 (U.K.), and SFB/TRR79 (D.H. and A.S.), and the German Federal Ministry of Education (BMBF) within the framework of the e:Med research and funding concept “CLIOMMICS” under grant 01ZX1309 (F.B.), “CAMPSIMM” under grant 01ES1103.

### Authorship

Contribution: F.B. and D.H. initiated the study; J. Stroh, A.S., M.H., D.H., and F.B. conceived and designed the research; J. Stroh, A.S., and M.H. performed most of the experiments and data analyses with crucial help from M.E.-R.; M.R. performed the immunohistochemical analyses; J. Slawska helped with the xenograft experiments; H.S., U.B., H.G., K.W., and C.S. provided patient data; J. Stroh, A.S., M.H., R.E., M.S., U.K., D.H., and F.B. analyzed the results; F.B. coordinated the work; J. Stroh, A.S., M.H., D.H., and F.B. wrote the manuscript; and all authors discussed the results and commented on the manuscript.

Conflict-of-interest disclosure: F.B. and U.K. received honoraria and research funding from BMS/Celgene. H.G. received grants and/or provision of investigational medicinal products from Amgen, BMS, Celgene, Chugai, Dietmar-Hopp-Foundation, Janssen, Johns Hopkins University, and Sanofi; and received research support from Amgen, BMS, Celgene, Chugai, Janssen, Incyte, Molecular Partners, Merck Sharp and Dohme (MSD), Sanofi, Mundipharma GmbH, Takeda, and Novartis; served on advisory boards of Adaptive Biotechnology, Amgen, BMS, Celgene, Janssen, Sanofi, Takeda; and received honoraria from Amgen, BMS, Celgene, Chugai, GlaxoSmithKline (GSK), Janssen, Novartis, and Sanofi. K.W. received grants from Amgen, Celgene, Sanofi, and Janssen and honoraria from Amgen, BMS, Celgene, Adaptive Biotech, Janssen, GSK, Karyopharm, Roche, Sanofi, Takeda, and Oncopeptides. H.S. received honoraria from Janssen Cilag, Takeda, Amgen, BMS/Celgene, Sanofi, Oncopeptides, Abbvie, GSK, Chugai, Pfizer, Sebia; and support for travel, accommodations, expenses from Janssen, Amgen, BMS/Celgene, Sanofi, GSK. C.S. received honoraria from Amgen, BMS, Celgene, GSK, Janssen, Novartis, MSD, Roche, Takeda; and research grants from Takeda, Janssen, and Novartis.

ORCID profiles: A.S., 0000-0002-2771-712X; R.E., 0000-0002-8433-9452; H.G., 0000-0003-0961-0035; U.K., 0000-0002-8485-1958.

Correspondence: Florian Bassermann (primary contact), Department of Medicine III, Hematology and Oncology, Klinikum

rechts der Isar, Technical University of Munich, Ismaninger Strasse 22, 81675 Munich, Germany; e-mail: florian.bassermann@tum.de; and Dirk Hose, VUB, Department of Hematology and Immunology, Myeloma Center Brussels, Laarbeeklaan 103, 1090 Jette, Belgium; e-mail: dirk.hose@vub.be.

## References

1. Rajkumar SV. Multiple myeloma: 2020 update on diagnosis, risk-stratification and management [published correction appears in *Am J Hematol*. 2020;95(11):1444]. *Am J Hematol*. 2020;95(5):548-567.
2. Mikhael J, Ismaila N, Cheung MC, et al. Treatment of multiple myeloma: ASCO and CCO Joint Clinical Practice Guideline [published correction appears in *J Clin Oncol*. 2020;38(21):2469]. *J Clin Oncol*. 2019;37(14):1228-1263.
3. Attal M, Lauwers-Cances V, Marit G, et al; IFM Investigators. Lenalidomide maintenance after stem-cell transplantation for multiple myeloma. *N Engl J Med*. 2012;366(19):1782-1791.
4. Jackson GH, Davies FE, Pawlyn C, et al; UK NCRI Haemato-oncology Clinical Studies Group. Lenalidomide maintenance versus observation for patients with newly diagnosed multiple myeloma (Myeloma XI): a multicentre, open-label, randomised, phase 3 trial. *Lancet Oncol*. 2019;20(1):57-73.
5. McCarthy PL, Owzar K, Hofmeister CC, et al. Lenalidomide after stem-cell transplantation for multiple myeloma. *N Engl J Med*. 2012;366(19):1770-1781.
6. Palumbo A, Cavallo F, Gay F, et al. Autologous transplantation and maintenance therapy in multiple myeloma. *N Engl J Med*. 2014;371(10):895-905.
7. Goldschmidt H, Mai EK, Dürig J, et al; German-speaking Myeloma Multicenter Group (GMMG). Response-adapted lenalidomide maintenance in newly diagnosed myeloma: results from the phase III GMMG-MM5 trial. *Leukemia*. 2020;34(7):1853-1865.
8. McCarthy PL, Holstein SA, Petrucci MT, et al. Lenalidomide maintenance after autologous stem-cell transplantation in newly diagnosed multiple myeloma: a meta-analysis. *J Clin Oncol*. 2017;35(29):3279-3289.
9. Eichner R, Heider M, Fernández-Sáiz V, et al. Immunomodulatory drugs disrupt the cereblon-CD147-MCT1 axis to exert antitumor activity and teratogenicity. *Nat Med*. 2016;22(7):735-743.
10. Heider M, Eichner R, Stroh J, et al. The IMiD target CRBN determines HSP90 activity toward transmembrane proteins essential in multiple myeloma. *Mol Cell*. 2021;81(6):1170-1186.e10.
11. Krönke J, Udeshi ND, Narla A, et al. Lenalidomide causes selective degradation of IKZF1 and IKZF3 in multiple myeloma cells. *Science*. 2014;343(6168):301-305.
12. Lu G, Middleton RE, Sun H, et al. The myeloma drug lenalidomide promotes the cereblon-dependent destruction of Ikaros proteins. *Science*. 2014;343(6168):305-309.
13. Kirk P, Wilson MC, Heddle C, Brown MH, Barclay AN, Halestrap AP. CD147 is tightly associated with lactate transporters MCT1 and MCT4 and facilitates their cell surface expression. *EMBO J*. 2000;19(15):3896-3904.
14. Iacono KT, Brown AL, Greene MI, Saouaf SJ. CD147 immunoglobulin superfamily receptor function and role in pathology. *Exp Mol Pathol*. 2007;83(3):283-295.
15. Walters DK, Arendt BK, Jelinek DF. CD147 regulates the expression of MCT1 and lactate export in multiple myeloma cells. *Cell Cycle*. 2013;12(19):3175-3183.
16. Arendt BK, Walters DK, Wu X, et al. Increased expression of extracellular matrix metalloproteinase inducer (CD147) in multiple myeloma: role in regulation of myeloma cell proliferation. *Leukemia*. 2012;26(10):2286-2296.
17. Zhu D, Wang Z, Zhao JJ, et al. The Cyclophilin A-CD147 complex promotes the proliferation and homing of multiple myeloma cells. *Nat Med*. 2015;21(6):572-580.
18. Seckinger A, Bähr-Ivacevic T, Benes V, Hose D. RNA-sequencing from low-input material in multiple myeloma for application in clinical routine. *Methods Mol Biol*. 2018;1792:97-115.
19. Seckinger A, Delgado JA, Moser S, et al. Target expression, generation, preclinical activity, and pharmacokinetics of the BCMA-T cell bispecific antibody EM801 for multiple myeloma treatment. *Cancer Cell*. 2017;31(3):396-410.
20. Warren P, Taylor D, Martini PGV, Jackson J, Bienkowska J. PANP – a New Method of Gene Detection on Oligonucleotide Expression Arrays. 2007 IEEE 7th International Symposium on Bioinformatics and BioEngineering. 2007:108-115.
21. Seckinger A, Hillengass J, Emde M, et al. CD38 as immunotherapeutic target in light chain amyloidosis and multiple myeloma-association with molecular entities, risk, survival, and mechanisms of upfront resistance. *Front Immunol*. 2018;9:1676.
22. Baumann U, Fernández-Sáiz V, Rudelius M, et al. Disruption of the PRKCD-FBXO25-HAX-1 axis attenuates the apoptotic response and drives lymphomagenesis. *Nat Med*. 2014;20(12):1401-1409.
23. Deora AA, Philp N, Hu J, Bok D, Rodriguez-Boulán E. Mechanisms regulating tissue-specific polarity of monocarboxylate transporters and their chaperone CD147 in kidney and retinal epithelia. *Proc Natl Acad Sci USA*. 2005;102(45):16245-16250.