

Anchoring IgG-degrading enzymes to the surface of platelets selectively neutralizes antiplatelet antibodies

Donald R. Lynch Jr,¹ Emily N. Stringham,² Boya Zhang,³⁻⁵ Ginette Balbin-Cuesta,^{6,7} Brian R. Curtis,^{8,9} Joseph S. Palumbo,^{1,2} Colin F. Greineder,³⁻⁵ and Benjamin E. Tourdot^{1,2}

¹Internal Medicine, University of Cincinnati College of Medicine, Cincinnati, OH; ²Cancer and Blood Diseases Institute, Cincinnati Children's Hospital Medical Center, Cincinnati, OH; ³Department of Pharmacology, ⁴Department of Emergency Medicine, ⁵BioInterfaces Institute, ⁶Cellular and Molecular Biology Program, and ⁷Medical Scientist Training Program, University of Michigan, Ann Arbor, MI; and ⁸Platelet & Neutrophil Immunology Laboratory, and ⁹Blood Research Institute, Versiti, Milwaukee, WI

Key Points

- Anchoring IgG-degrading enzymes to platelets cleaves and neutralizes pathogenic antiplatelet antibodies without collateral IgG damage.
- Platelets with surface-bound IgG-degrading enzymes are protected from clearance in murine models of ITP.

Immune thrombocytopenia (ITP) is an acquired bleeding disorder characterized by immunoglobulin G (IgG)-mediated platelet destruction. Current therapies primarily focus on reducing antiplatelet antibodies using immunosuppression or increasing platelet production with thrombopoietin mimetics. However, there are no universally safe and effective treatments for patients presenting with severe life-threatening bleeding. The IgG-degrading enzyme of *Streptococcus pyogenes* (IdeS), a protease with strict specificity for IgG, prevents IgG-driven immune disorders in murine models, including ITP. In clinical trials, IdeS prevented IgG-mediated kidney transplant rejection; however, the concentration of IdeS used to remove pathogenic antibodies causes profound hypogammaglobulinemia, and IdeS is immunogenic, which limits its use. Therefore, this study sought to determine whether targeting IdeS to Fc γ RIIA, a low-affinity IgG receptor on the surface of platelets, neutrophils, and monocytes, would be a viable strategy to decrease the pathogenesis of antiplatelet IgG and reduce treatment-related complications of nontargeted IdeS. We generated a recombinant protein conjugate by site-specifically linking the C-terminus of a single-chain variable fragment from an Fc γ RIIA antibody, clone IV.3, to the N-terminus of IdeS (scIV.3-IdeS). Platelets treated with scIV.3-IdeS had reduced binding of antiplatelet IgG from patients with ITP and decreased platelet phagocytosis in vitro, with no decrease in normal IgG. Treatment of mice expressing human Fc γ RIIA with scIV.3-IdeS reduced thrombocytopenia in a model of ITP and significantly improved the half-life of transfused platelets expressing human Fc γ RIIA. Together, these data suggest that scIV.3-IdeS can selectively remove pathogenic antiplatelet IgG and may be a potential treatment for patients with ITP and severe bleeding.

Introduction

Severe bleeding is a rare but potentially life-threatening complication of immune thrombocytopenia (ITP). Although advances such as thrombopoietin mimetics have improved the quality of life for patients with ITP, there is no universally safe and effective treatment for patients presenting with severe life-threatening bleeding. Severe bleeding is estimated to occur in up to 20% of children and 10% of adults with ITP.

Submitted 31 January 2022; accepted 19 May 2022; prepublished online on *Blood Advances* First Edition 23 June 2022; final version published online 8 August 2022. DOI 10.1182/bloodadvances.2022007195.

For data sharing, please contact the corresponding author at benjamin.tourdot@cchmc.org. The full-text version of this article contains a data supplement.

© 2022 by The American Society of Hematology. Licensed under Creative Commons Attribution-NonCommercial-NoDerivatives 4.0 International (CC BY-NC-ND 4.0), permitting only noncommercial, nonderivative use with attribution. All other rights reserved.

Moreover, ~1% of patients with ITP present with intracranial hemorrhage, arguably the most devastating complication of ITP.¹ Life-threatening bleeding is also a significant complication for patients with alloimmune thrombocytopenia, including those with neonatal alloimmune thrombocytopenia and patients undergoing bone marrow transplantation or cancer treatment who develop alloantibodies.^{2,3} Random-donor platelet transfusions are often given in these situations, but the clinical utility is limited because the platelets are rapidly cleared by circulating immunoglobulin G (IgG). Immunomodulating agents such as steroids and IV immunoglobulin as well as thrombopoietin mimetics lack the rapid onset of action needed in these contexts. Clearly, there is a critical need for novel approaches to treat severe bleeding in the setting of ITP.

The recombinant IgG-degrading enzyme of *Streptococcus pyogenes* (IdeS) is such a therapy that could be used for treating severe bleeding in the setting of IgG-driven diseases such as ITP. IdeS is a cysteine protease secreted by *S pyogenes* that facilitates evasion of the immune response by cleaving the heavy chain of IgG, generating an F(ab')₂ and 2 Fc fragments.⁴ Because IdeS can selectively and rapidly neutralize the Fc-mediated effector function of human IgG, it has been developed into a treatment for IgG-mediated disorders. In murine models, IdeS ameliorates a range of IgG-driven disorders, including ITP and heparin-induced thrombocytopenia (HIT).^{5,6}

Although effective in clinical trials, IdeS has limitations to its use. First, IdeS dose-dependently removes >95% of IgG from circulation, and it can take >3 weeks for IgG to return to pretreatment levels.⁷ The global removal of IgG places the patient at risk for severe infection. Second, for patients with anti-glomerular basement membrane antibodies, the pathogenic IgG can return to toxic levels after IdeS treatment, and ~50% of patients have to resume their previous treatment.⁸ However, subsequent doses of IdeS are not recommended because of concern that anti-IdeS antibodies could trigger a hypersensitivity reaction.⁸ Interestingly, in humans, the global clearance of IgG and IdeS immunogenicity occur at higher (>100 nM) but not lower (<25 nM) plasma concentrations of IdeS.⁷

Targeting IdeS to the surface of platelets to neutralize antiplatelet IgG before platelet transfusion is a potential strategy to obtain a rapid and sustained rise in platelet count in patients with ITP while minimizing IdeS adverse effects. Therefore, in this study, FcγRIIA, a low-affinity IgG receptor, was chosen as the binding target for IdeS based on the following properties: (1) selective expression on platelets, monocytes, and neutrophils⁹; (2) proximity to 2 of the most common antibody targets in patients with ITP, αIIbβ3 and GPIIb/IIIa¹⁰; (3) minimal importance in hemostasis¹¹; and (4) involvement in antibody-mediated platelet activation.¹² Moreover, a well-characterized, high-affinity, function-blocking humanized monoclonal antibody specific for FcγRIIA designated IV.3 is available.¹³⁻¹⁵ Using a site-specific bioconjugation strategy, we conjugated the C-terminus of a single-chain variable fragment of IV.3 (scIV.3) to the N-terminus of IdeS, producing a single protein (scIV.3-IdeS) capable of anchoring IdeS to the surface of FcγRIIA-expressing cells. Remarkably, platelets decorated with scIV.3-IdeS cleaved platelet-bound IgG, resulting in a decrease in platelet phagocytosis in vitro, without inducing proteolytic cleavage of nonpathogenic IgG. Furthermore, scIV.3-IdeS was capable of rapidly ameliorating thrombocytopenia in a mouse model of ITP. These data suggest that scIV.3-IdeS alone or in conjunction with other therapies could

provide a novel treatment for patients with immune platelet disorders and severe bleeding. Moreover, cell-specific targeting of IdeS could reduce the disease severity of other IgG-driven disorders with potentially less immune suppression than current therapies.

Methods

Isolation of PRP and platelets

Research involving humans was approved by the Cincinnati Children's Hospital Medical Center (CCHMC) Institutional Review Board. Blood was collected into vacutainers containing sodium citrate and centrifuged for 10 minutes at 200g to obtain platelet-rich plasma (PRP). Where indicated, citrated PRP was supplemented with 1 mM of CaCl₂ and used without adjustment of platelet count. To isolate platelets from PRP, acid citrate dextrose and prostaglandin E1 were added, and the samples were then centrifuged for 10 minutes at 2000g. The pelleted platelets were resuspended in Tyrode's buffer and adjusted to 3.0 × 10⁸ platelets/mL, unless otherwise stated.

All studies involving mice were approved by the Cincinnati Children's Hospital Medical Center Institutional Animal Care and Use Committee. Blood was drawn from the inferior vena cava of mice into sodium citrate. Blood was diluted with equal volumes of Tyrode's buffer and isolated in the same manner as human platelets.

Expression, sortase modification, and purification of IV.3 scFv-LPETGG and GGG-IdeS

V_H and V_L sequences for IV.3 were fused with a (GGGGS)₃ linker and purchased as a gene block. This sequence was cloned into previously reported bacterial plasmid pBAD/scFv-LPETGG.^{16,17} scIV.3-LPETGG was expressed in bacteria and purified using anti-FLAG resin. scIV.3-LPETGG was modified with an FAM peptide as previously described.¹⁶ Similarly, a complementary DNA encoding amino acids 30 to 339 of IdeS (NBCI WP_010922160), corresponding to the mature proteolytic enzyme,⁴ was cloned into the N-terminal sortase vector, pRSET/GGG. GGG-IdeS was expressed in bacteria and purified using Ni-NTA agarose. The purity of both proteins was confirmed to be >95% by size-exclusion high-performance liquid chromatography. The proteins were reacted with sortase-A5 at a ratio of 1:1.5 (scIV.3-LPETGG/GGG-IdeS), and the desired protein product, scIV.3-IdeS, was purified by size-exclusion high-performance liquid chromatography.

Characterization of recombinant protein binding by flow cytometry

Washed platelets (7.5 × 10⁶), blood (5 μL), or THP-1 cells (5 × 10⁵) were incubated with increasing concentrations of scIV.3-FAM and analyzed by flow cytometry. Blood samples were simultaneously stained with scIV.3-FAM and cell-specific antibodies against monocytes (CD14; phycoerythrin [PE]-Cy7 conjugated), neutrophils (CD66b; PerCP-CY5 conjugated), and platelets (CD42a; PE conjugated). To characterize the binding of scIV.3-IdeS, increasing concentrations of His-tagged proteins were incubated with platelets (7.5 × 10⁶), followed by the addition of an Alexa Fluor 488-conjugated anti-His Tag antibody. Where indicated, 30 nM of commercial IV.3 (cIV.3; StemCell Technologies) was added to platelets 15 minutes before the addition of scIV.3 or scIV.3-IdeS.

Aggregation

Aggregation was measured under stirring conditions (1000 rpm) at 37°C. Platelets were stimulated with collagen, adenosine 5'-diphosphate (ADP), mouse monoclonal anti-human CD9 antibody (clone ALB6), or rabbit monoclonal anti-human CD9 antibody (Abcam) at indicated concentrations. Where appropriate, samples were treated with sclV.3 or sclV.3-IdeS for 15 minutes before being stimulated.

IgG degradation

Human IgG was resuspended in Tyrode's buffer to 2 mg/mL and incubated with predetermined concentrations of recombinant proteins for 1 hour at 37°C. Reactions were stopped with 5X Laemmli sample buffer and separated on sodium dodecyl sulfate polyacrylamide gel electrophoresis gels. Gels were stained with Coomassie dye and scanned on a Li-COR Odyssey CLX imager.

Platelet spreading

Eight-well chambered slides were coated with fibrinogen (100 µg/mL), and platelets (2×10^6 platelets per mL) were then allowed to spread for 1 hour at 37°C. Adherent platelets were stained with a recombinant protein and Alexa Fluor 647–conjugated CD41 for 30 minutes and fixed. Where indicated, sclV.3 (30 nM) was added to platelets before the addition of recombinant protein. Images were obtained on a Nikon Ti-E inverted microscope using a 60×/1.40 oil objective.

In vitro antiplatelet antibody cleavage

Washed platelets (7.5×10^6) were coincubated with recombinant protein (sclV.3, IdeS, or sclV.3-IdeS) and rabbit anti-human CD41 or CD42b antibodies (250 ng), polyclonal rabbit anti-mouse platelet serum (RAMS), or sera from patients with ITP (1:25 dilution) for 30 minutes at 37°C. Afterward, a CoraLite 594–conjugated mouse monoclonal antibody specific to the heavy chain of rabbit IgG or an APC-conjugated mouse monoclonal antibody specific to the Fc fragment of human IgG was incubated with the platelets for 30 minutes. Samples were then fixed and analyzed by flow cytometry. As a control, increasing concentrations of platelets treated with sclV.3-IdeS were incubated with equal volumes of autologous platelet-poor plasma for 1 hour at 37°C, and a western blot to detect human IgG was performed to measure IgG cleavage.

In vitro phagocytosis

THP-1 cells (1×10^6 cells) were differentiated overnight in a 24-well plate by the addition of 2 ng/mL of transforming growth factor-β1 and 50 nM of 1,25-(OH)₂-vitamin D3 to cell culture media (RPMI 1640, 10% fetal calf serum, 2 mM of L-glutamine, 100 units/mL of penicillin, and 100 µg/mL streptomycin). The next day, THP-1 cells were activated by 15 ng/mL of PMA for 30 minutes, and the media was then replaced. Concurrently with THP-1 cell preparation, platelets were stained with 5 µM of carboxy-fluorescein succinimidyl-ester (CFSE) and then incubated with sclV.3 or sclV.3-IdeS and commercial antiplatelet antibodies (rabbit anti-CD41 and anti-CD42b antibodies; 250 ng) or ITP sera (1:25 dilution). Antibody-treated platelets (1×10^7) were washed and then incubated with THP-1 cells for 60 minutes at 37°C. Wells were washed with PBS, and THP-1 cells were then detached with trypsin. Cells were stained with anti-CD42a antibodies to detect platelets adhered to the THP-1 cells but not internalized. Cells were

fixed in 2% formaldehyde, and the samples were analyzed by flow cytometry.

Mouse model of antibody-mediated platelet refractoriness

Platelets were collected from mice deficient in murine FcγRα receptors and expressing the full complement of human FcγR (hFcγR) receptors (hFcγRI^{tg}IIA^{tg}IIB^{tg}IIIA^{tg}IIB^{tg}mFcγR^{null} mice; a gift from Jeffrey V. Ravetch).⁹ Washed platelets were incubated with 5 µM of CFSE for 15 minutes at 37°C. Platelets were washed and then treated with either control or sclV.3-IdeS (20 nM) for 15 minutes. CFSE-stained platelets (1.5×10^8 platelets in 200 µL) were tail vein injected into wild-type C57BL/6J mice that were intraperitoneally injected with RAMS (25 µL) ~20 hours before platelet transfusion. Blood was collected via tail bleed at 1 and 4 hours posttransfusion. Blood (5 µL) was stained with an anti-CD41 antibody (MWRReg30; Alexa Fluor 647), and total platelets (CD41⁺) and transfused platelets (CFSE⁺/CD41⁺) were enumerated using a Cytex Aurora flow cytometer.

Passive models of ITP in mice

Mice deficient in murine FcγRα receptors and expressing the full complement of hFcγR receptors (hFcγRI^{tg}IIA^{tg}IIB^{tg}IIIA^{tg}IIB^{tg}mFcγR^{null} mice; a gift from Jeffrey V. Ravetch) were IV injected with sclV.3-IdeS (10 µg) or Tyrode's buffer.⁹ After 30 minutes, a retroorbital bleed was performed, and mice were then intraperitoneally injected with RAMS. Blood was drawn via retroorbital bleed at 2 and 24 hours after antibody injection. A Hemavet 950FS was used to count platelets. Blood was stained with anti-CD42a and anti-His Tag antibodies and analyzed by flow cytometry.

Platelet factor 4–dependent P-selectin expression assay

Platelets (6×10^6) were incubated with platelet factor 4 (37.5 µg/mL) and either sclV.3-IdeS or Tyrode's buffer for 30 minutes. Serum (10 µL) from patients with HIT was then mixed into each sample and incubated without agitation at room temperature. After 1 hour, platelets were stained with APC-conjugated anti-CD41 and fluorescein isothiocyanate–conjugated anti-P-selectin antibodies, fixed with 2% paraformaldehyde, and analyzed by flow cytometry. As a positive control, platelets were stimulated with PAR1-activating peptide (NH2-SFLLRN; 25 µM).

Data analysis and statistics

GraphPad Prism 7 software was used to analyze data and calculate statistical significance. The statistical test used to analyze each set of data is specified in the figure legend.

Results

Characterization of the binding properties of sclV.3

Fluorescently labeled sclV.3 was incubated with platelets from wild-type mice, which lack FcγRIIA, or transgenic mice expressing hFcγRIIA to determine whether sclV.3 was specific for hFcγRIIA. As shown in Figure 1, sclV.3-FAM bound to platelets expressing hFcγRIIA in a concentration-dependent manner (K_d , 0.27 nM). In contrast, there was no detectable binding of sclV.3-FAM to platelets from FcγRIIA-null mice (Figure 1A). To determine the affinity with

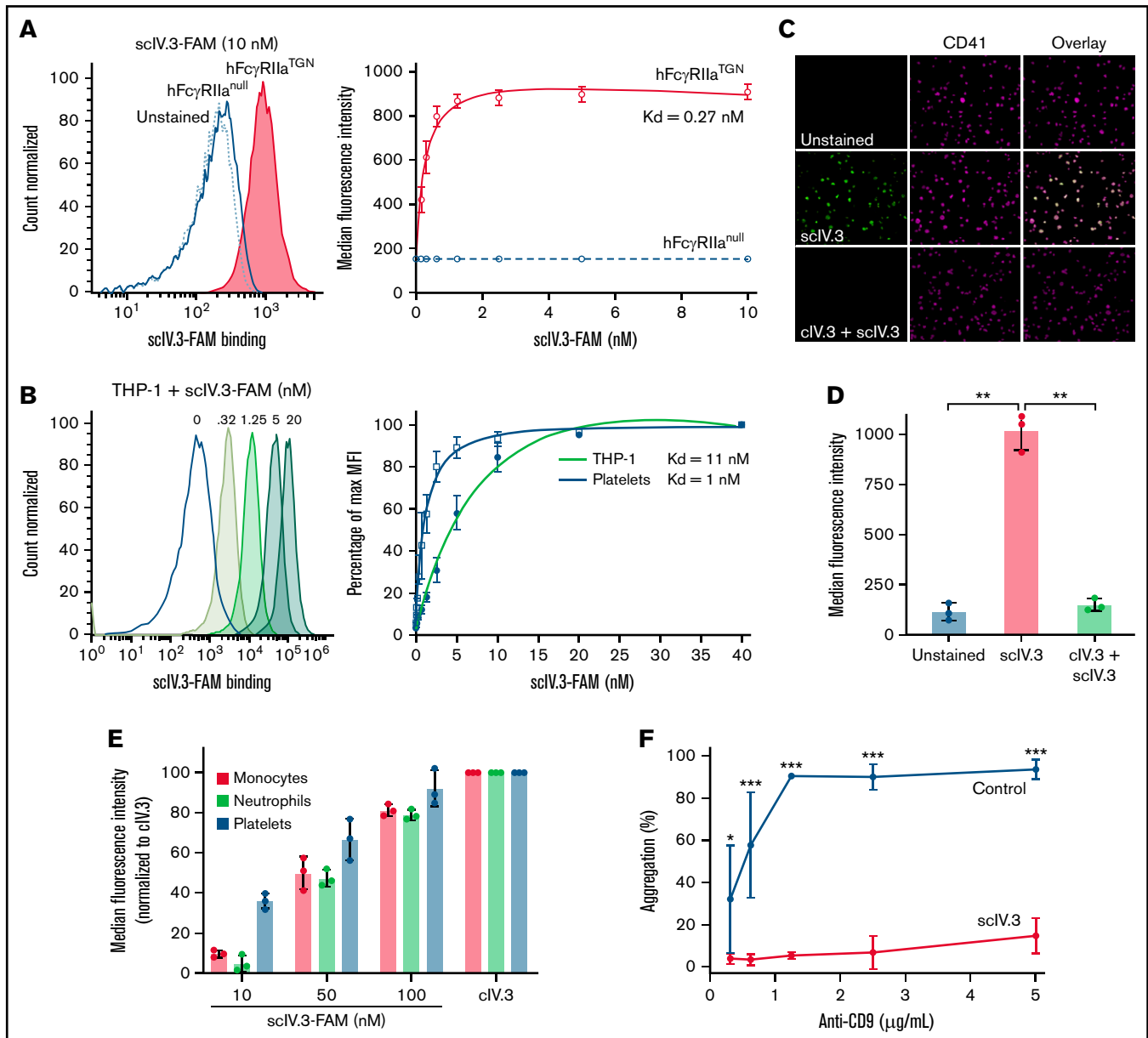


Figure 1. Characterization of the binding properties of sclV.3. (A) Increasing concentrations of FAM-conjugated sclV.3 (scIV.3-FAM) were incubated with platelets from wild-type mice (hFc γ RIIIa^{null}) or hFc γ RIIIa transgenic mice (hFc γ RIIIa^{TGN}), and the median fluorescence intensity (MFI) of 3 independent experiments was reported. (B) Representative histograms of THP-1 cells stained with select concentrations of sclV.3-FAM. THP-1 cells (green dashed line) or human platelets (black line) were incubated with increasing concentrations of sclV.3-FAM, and data are reported as percentage of maximum MFI for each cell type (n = 3-4). (C) Representative microscopic images (60 \times objective) of human platelets (CD41⁺) spread on fibrinogen, treated with control or cIV.3 (30 nM), and then stained with sclV.3-FAM (5 nM). (D) Flow cytometry was used to quantify the binding of sclV.3-FAM to human platelets after incubation with or without cIV.3 (data represent n = 4; mean \pm standard deviation [SD]). (E) Human whole blood was incubated with increasing concentrations of sclV.3-FAM and normalized to cIV.3 (30 nM). (F) Human platelets were treated with sclV.3 (50 nM) or control and then stimulated with mouse anti-human CD9 antibodies, an Fc γ RIIIa-specific agonist (data represent n = 5; mean \pm SD). Two-way statistical analysis of variance with Bonferroni correction was performed. K_d, distribution coefficient. *P < .05, **P < .01, ***P < .001.

which sclV.3 binds to human cells expressing Fc γ RIIIa, increasing concentrations of sclV.3-FAM were incubated with THP-1 cells (a monocyte-like cell line) or platelets. The FAM-conjugated sclV.3 bound to both THP-1 cells and platelets with a high affinity, at K_d of 11 and 1 nM, respectively (Figure 1B). Because of the ~100-fold difference in Fc γ RIIIa expression between THP-1 (171 000 \pm 13 000 copies per cell) and platelets (1000-5000 copies per

platelet), data are presented as percentage bound relative to highest concentration tested per cell type.^{12,18,19} To determine whether sclV.3 and cIV.3 had overlapping binding sites, platelets were treated with cIV.3 before staining with sclV.3-FAM. As expected, incubation of platelets with cIV.3 prevented sclV.3-FAM from binding, as analyzed by fluorescence microscopy and flow cytometry (Figure 1C-D).

Because neutrophils, monocytes, and platelets express Fc γ RIIA, it was important to next determine the cellular distribution of sclV.3-FAM in these populations in blood. To do this, human blood was incubated with increasing concentrations of sclV.3-FAM or cIV.3.⁹ sclV.3-FAM bound similarly to neutrophils, monocytes, and platelets in a dose-dependent manner (Figure 1E). To assess whether the binding of sclV.3 was functionally relevant, we examined the ability of sclV.3 to block platelet aggregation mediated by anti-CD9 antibodies, a known Fc γ RIIA-dependent agonist.^{20–22} Tyrode's buffer (control)-treated platelets exhibited dose-dependent aggregation in response to stimulation with anti-CD9 antibodies. In contrast, platelets pretreated with sclV.3 (50 nM) had a >90% reduction in aggregation, even at the highest concentration of anti-CD9 antibody tested (5 μ g/mL; Figure 1F). Taken together, these data strongly suggest that sclV.3 retains the binding specificity and affinity for Fc γ RIIA.

Generation and characterization of recombinant sclV.3-IdeS

To determine whether the conjugation of IdeS to the C-terminus of sclV.3 affected its affinity for Fc γ RIIA, we incubated increasing concentrations of His-tagged sclV.3 or sclV.3-IdeS with human platelets (Figure 2A). The sclV.3-IdeS fusion protein was found to have similar binding affinity (K_d , 1.3 nM) to human platelets as sclV.3 (K_d , 0.9 nM), and the binding of sclV.3-IdeS to human platelets was blocked by cIV.3 (Figure 2B).

The ability of sclV.3-IdeS to degrade surface-bound IgG is predicated on it being retained on the cell surface; however, previous work demonstrated engagement of Fc γ RIIA with divalent IV.3 caused receptor internalization.¹⁴ We therefore sought to determine whether our monovalent ligand, sclV.3, caused receptor internalization when engaging Fc γ RIIA. We incubated the lowest concentration of His-tagged sclV.3-IdeS (5 nM) that caused full receptor occupancy on human platelets for up to 90 minutes. Surface-bound sclV.3-IdeS was similar at all time points tested as measured by flow cytometry (Figure 2C). However, the cross-linking of platelet Fc γ RIIA with IV.3 and a goat anti-mouse antibody caused 70% of the receptor to be internalized after 90 minutes (supplemental Figure 1). These data support the notion that Fc γ RIIA-bound sclV.3-IdeS remained on the surface of platelets for the duration of our in vitro studies.

To test whether the fusion of IV.3 to the N-terminus of IdeS affected its enzymatic activity, human IgG was incubated with increasing concentrations of either IdeS or sclV.3-IdeS. IdeS digests the heavy chains of IgG in a 2-step process, with the cleavage of the first heavy chain proceeding roughly 100-fold faster than that of the second.²³ The samples were then run on a 10% polyacrylamide gel electrophoresis gel under nonreducing conditions, and the formation of the Fc cleavage product of IgG was quantified. Similar amounts of IgG were cleaved by IdeS and sclV.3-IdeS at 100 nM, resulting mostly in a single-chain cleavage (Figure 2D). Minimal IgG cleavage was observed at 10 or 1 nM by either IdeS or sclV.3-IdeS (Figure 2D). Importantly, sclV.3 by itself was unable to cleave IgG (Figure 2D). Taken together, these data demonstrate that the fusion of sclV.3 and IdeS does not appreciably alter the binding affinity of scFv or the cleavage capacity of IdeS.

sclV.3-IdeS inhibits IgG-mediated platelet aggregation more potently than sclV.3 alone

On platelets, IgG-dependent clustering of Fc γ RIIA causes platelet activation, but Fc γ RIIA has also been implicated in IgG-independent potentiation of integrin α IIb β 3 signaling.^{24,25} To examine whether sclV.3 or sclV.3-IdeS binding to Fc γ RIIA alters platelet activation, PRP was stimulated with either ADP or collagen. As expected, sclV.3 and sclV.3-IdeS, but not the control, inhibited anti-CD9 antibody-mediated platelet aggregation (Figure 3A). However, neither sclV.3 nor sclV.3-IdeS inhibited platelet aggregation in response to collagen or ADP compared with vehicle control (Figure 3A), even at threshold concentrations of agonists (supplemental Figure 2).

To determine whether sclV.3-IdeS neutralizes IgG under biologically relevant conditions, subsaturating concentrations of sclV.3 or sclV.3-IdeS were bound to the platelet surface, and platelets were then stimulated with anti-CD9 IgG antibodies. The inhibitory effects of sclV.3 and sclV.3-IdeS on Fc γ RIIA-dependent platelet activation were similar in platelets stimulated with mouse anti-CD9 antibodies, which cannot be cleaved by IdeS (Figure 3B). When platelets were incubated with IdeS-cleavable rabbit anti-CD9 antibodies, sclV.3-IdeS, but not sclV.3, was able to inhibit aggregation at 1 and 2.5 nM (Figure 3C). Higher concentrations (20 nM) of either sclV.3 or sclV.3-IdeS that saturated the receptor were able to inhibit rabbit anti-human CD9-mediated platelet activation. sclV.3 and sclV.3-IdeS bound with similar affinity to Fc γ RIIA, but the conjugation of IdeS to sclV.3 enhanced its ability to prevent aggregation mediated by cleavable (rabbit) IgG, but not uncleavable (mouse) IgG.

Targeting sclV.3-IdeS to platelet Fc γ RIIA cleaves antiplatelet antibodies and prevents platelet phagocytosis

To examine whether sclV.3-IdeS anchored to the surface of platelets could neutralize antiplatelet IgG, sclV.3-IdeS-treated platelets were incubated with polyclonal rabbit IgG specific for human CD41 or CD42b, and IgG cleavage and in vitro phagocytosis were measured. As expected, the amount of intact anti-human CD41 and CD42b antibodies bound to platelets treated with sclV.3 (5 nM) or vehicle control was the same, as determined by flow cytometry with an anti-rabbit IgG heavy chain-specific antibody (Figure 4A). In contrast, platelets with sclV.3-IdeS (5 nM) on their surface had a decrease in the binding of intact anti-CD41 or anti-CD42b antibodies (Figure 4A). Interestingly, equal concentrations of nontargeted IdeS (5 nM) were unable to degrade antiplatelet IgG; however, higher concentrations of nontargeted IdeS were able to cleave antiplatelet IgG (Figure 4A). To assess whether sclV.3-IdeS could cleave IgG on the surface of platelets precoated in antiplatelet antibodies, platelets were incubated with polyclonal rabbit IgG specific for human CD41, washed, and treated with sclV.3-IdeS (5 nM). Antibody-coated platelets treated with sclV.3-IdeS for 30 minutes had a reduction of ~80% in surface-bound heavy chain IgG compared with control (Figure 4B). To examine whether sclV.3-IdeS-coated platelets caused collateral IgG degradation, sclV.3-IdeS-coated platelets were incubated with platelet-poor plasma for 1 hour. IgG cleavage (~30-kDa fragment) was not detected at any of the sclV.3-IdeS-coated platelet concentrations tested (0.375 to 1.5×10^8 platelets per mL; Figure 4C). An antibody-dependent in vitro phagocytosis assay was then performed to explore the physiological relevance of the reduction in heavy chain bound to platelets. CFSE-stained platelets were incubated with a

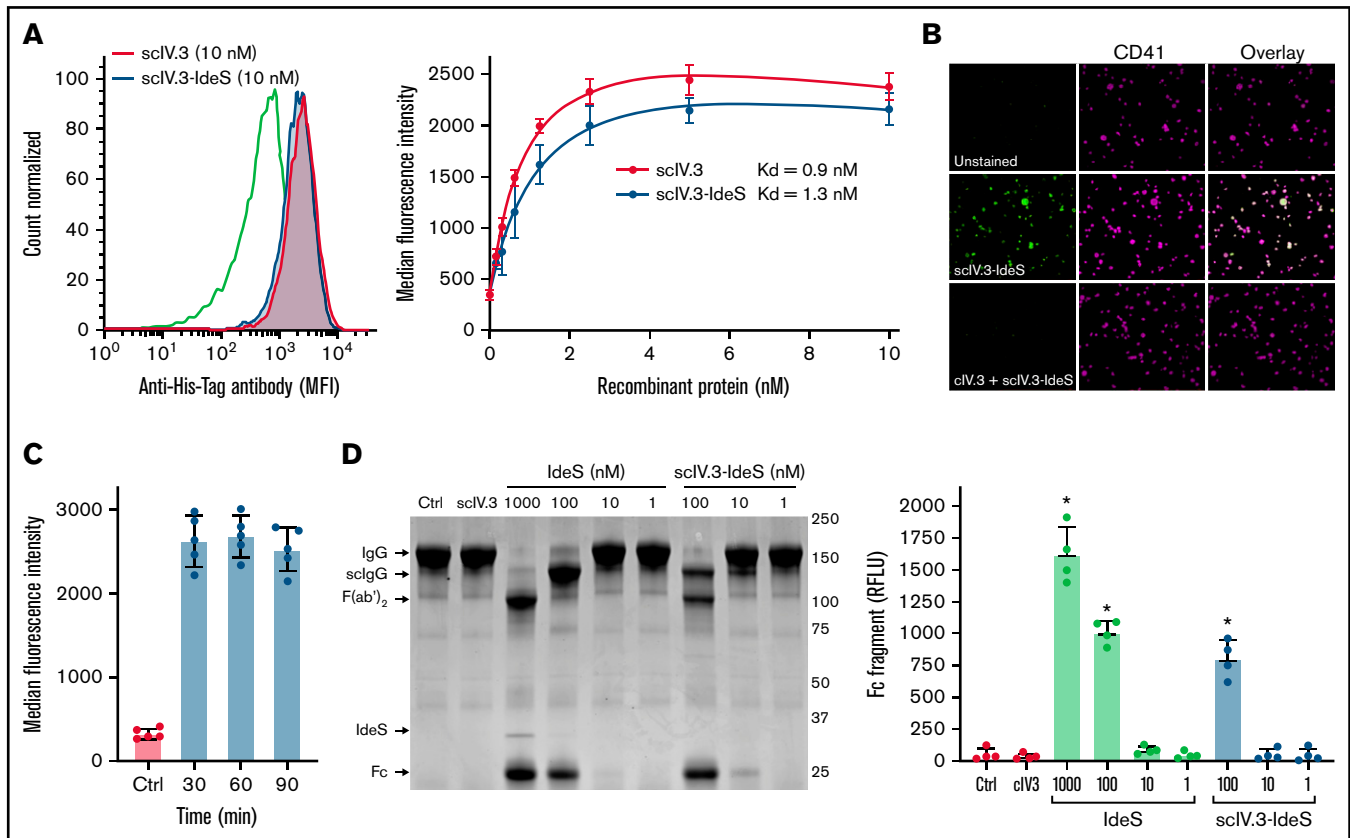


Figure 2. Generation and characterization of recombinant sclV.3-IdeS. (A) Increasing concentrations of His-tagged sclV.3-IdeS or sclV.3 were incubated with human platelets and then stained with a fluorescently labeled anti-His Tag antibody and analyzed by flow cytometry ($n = 4$). (B) Microscopic images ($60\times$ objective) of platelets spread on fibrinogen treated with control or sclV.3 and costained with sclV.3-IdeS (5 nM) and an anti-CD41 antibody. (C) Surface-bound sclV.3-IdeS was quantified by flow cytometry every 30 minutes for 90 minutes. (D) Representative Coomassie-stained gel used to evaluate IgG cleavage after the incubation of IgG with predetermined concentrations of sclV.3, IdeS, or sclV.3-IdeS. IdeS cleaves IgG in a 2-step process, first generating a single-cleaved IgG (sclgG) and then a double-cleaved $F(ab')_2$. The cleaved Fc fragment was quantified as a measure of IdeS activity. The relative fluorescence units of the Fc fragment were reported for 4 independent experiments (data given as mean \pm standard deviation). * $P < .05$. RFLU, relative fluorescence units.

combination of CD41 and CD42b polyclonal antibodies in the presence of sclV.3, sclV.3-IdeS, or control and then added to PMA-activated THP-1 cells. The number of THP-1 cells with surface-adhered or internalized CFSE⁺ platelets was decreased in platelets with surface-bound IdeS compared with platelets treated with sclV.3 or control (Figure 4D). Furthermore, compared with platelets treated with sclV.3 or control, fewer sclV.3-IdeS-treated platelets were phagocytosed by THP-1 cells (CFSE⁺/CD42a⁻) in the presence of antiplatelet antibodies (Figure 4D).

IdeS-IV.3-treated platelets have increased survival in murine models of ITP

To determine the effectiveness of sclV.3-IdeS-coated platelets to cleave polyclonal rabbit antiplatelet IgG in vitro, increasing concentrations of RAMS were incubated with platelets isolated from mice expressing human Fc γ R receptors. Even at the highest concentration of RAMS tested (10 μ g), platelets coated in sclV.3-IdeS had a decrease of $\sim 90\%$ in full-length antibody bound compared with sclV.3-treated platelets (Figure 5A). To test whether sclV.3-IdeS prevented platelet clearance in vivo, mice expressing human Fc γ RIIA were injected with sclV.3-IdeS (10 μ g) or buffer control

and, 30 minutes later, intraperitoneally injected with 10 or 20 μ g of rabbit anti-mouse platelet sera. After 24 hours, mice treated with sclV.3-IdeS had a higher platelet count than control-treated mice (Figure 5B). The binding of sclV.3-IdeS to platelets in mice was measured at 0.5, 2, and 24 hours postinjection. There was a significant increase in sclV.3-IdeS binding to platelets at 0.5 and 2 hours, but not 24 hours (Figure 5C). To model antibody-mediated platelet refractoriness, mice were intraperitoneally injected with RAMS 24 hours before being transfused with CFSE-labeled hFc γ RIIA⁺ platelets treated with sclV.3-IdeS or control. At 1 and 4 hours posttransfusion, the total amount of platelets was increased in mice transfused with sclV.3-IdeS-treated platelets compared with control (Figure 5D-E). Additionally, transfused platelets treated with sclV.3-IdeS were protected from clearance compared with control-treated platelets (Figure 5D-E).

Platelets with surface-bound IdeS neutralize the Fc-dependent effector functions of ITP and HIT antibodies

Platelets with surface-bound IdeS efficiently cleaved and neutralized the Fc-dependent effector functions of commercial polyclonal

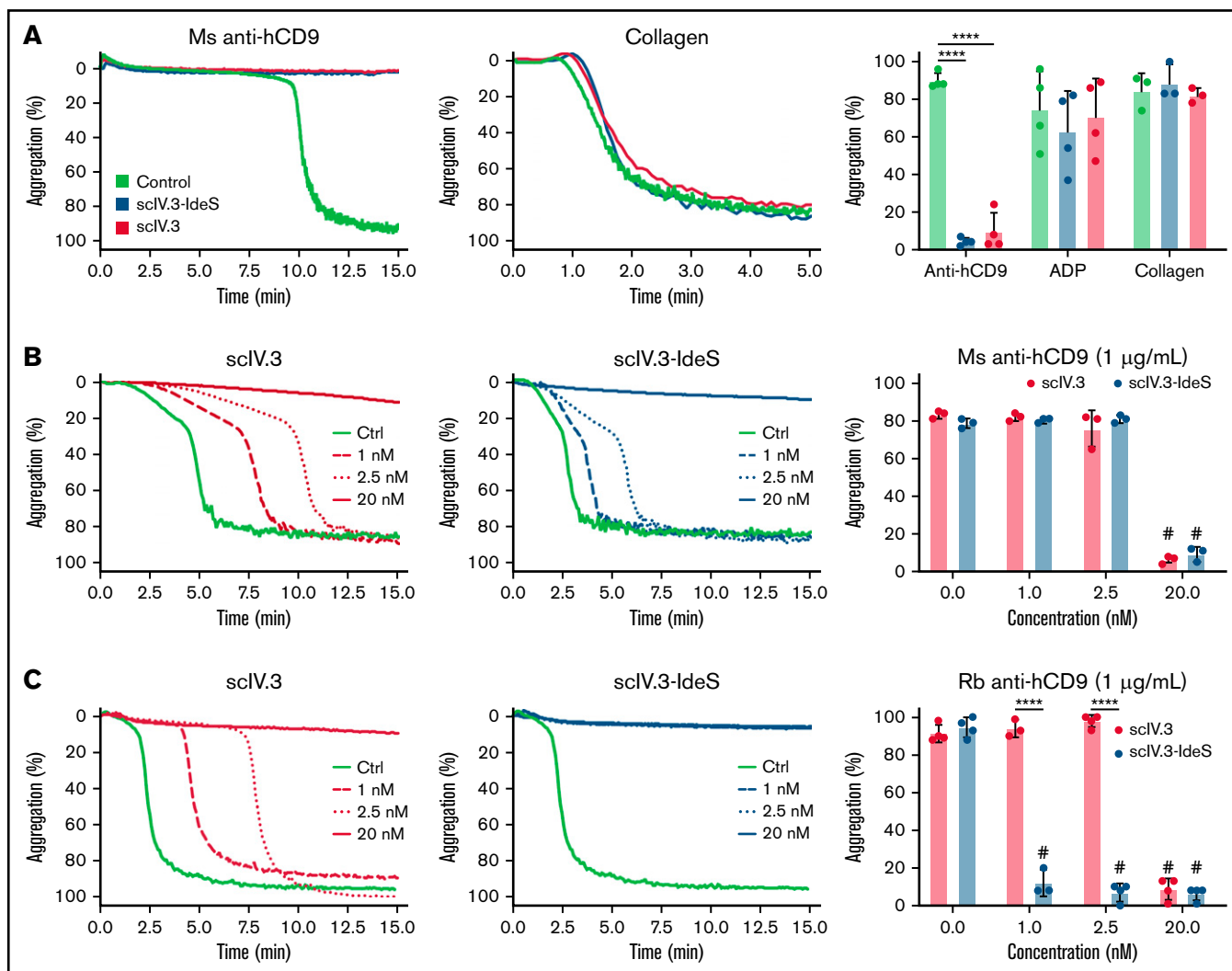


Figure 3. scIV.3-IdeS inhibits IgG-mediated platelet aggregation more potently than scIV.3 alone. (A) PRP was incubated with scIV.3 (20 nM), scIV.3-IdeS (20 nM), or control and then stimulated with a mouse (Ms) anti-human CD9 antibody (Ms anti-hCD9; 1 µg/mL), ADP (20 µM), or collagen (1 µg/mL). Representative tracings for Ms anti-hCD9- and collagen-stimulated platelets were included, and maximum aggregation for 3 to 4 independent experiments was reported. (B) Washed platelets treated with 1, 2.5, or 20 nM of scIV.3 or scIV.3-IdeS were stimulated with Ms anti-hCD9 (1 µg/mL), and maximum aggregation was reported. (C) Platelets treated with predetermined concentrations of scIV.3 or scIV.3-IdeS were stimulated with rabbit (rb) anti-hCD9 (1 µg/mL), and maximum aggregation was reported (data shown as mean ± SD; 1-way analysis of variance; n = 3-4). #*P* < .05 (statistical difference between treated and control [0 nM]), *****P* < .0001.

antiplatelet antibodies. Therefore, we next wanted to determine whether platelets with surface-bound IdeS could neutralize the Fc-dependent effector functions of antibodies from patients with HIT or ITP. Previously established platelet factor 4-dependent P-selectin surface expression assays were used to test the ability of scIV.3-IdeS to block HIT IgG-mediated platelet activation.²⁶ Platelets treated with scIV.3-IdeS had decreased HIT IgG-mediated P-selectin surface expression compared with vehicle control-treated platelets (Figure 6A). Platelets from healthy donors were incubated with sera from 4 patients with ITP, and the amount of intact antiplatelet antibodies remaining on the platelet surface after treatment with scIV.3-IdeS (5 nM) was quantified by flow cytometry using an anti-human Fc-specific antibody. The binding of full-length antiplatelet antibodies from the sera of all 4 patients was significantly reduced in platelets treated with scIV.3-IdeS compared with control

(Figure 6B). To examine whether scIV.3 alone had an impact on HIT IgG-mediated platelet activation or prevented antiplatelet antibodies from binding platelets, respectively, platelets treated with scIV.3 or scIV.3-IdeS were exposed to sera from patients with HIT or ITP. scIV.3 inhibited HIT IgG-mediated platelet activation (Figure 6C), but not the binding of antiplatelet IgG to platelets (Figure 6D). CFSE-stained platelets were incubated with sera from 4 separate patients with ITP in the presence or absence of scIV.3-IdeS and added to PMA-activated THP-1 cells. Platelets treated with scIV.3-IdeS had a significant decrease in the number of platelets adherent to or internalized by activated THP-1 cells in 3 of the 4 ITP samples tested (Figure 6E). Interestingly, antibodies from ITP patient 2 bound to platelets (Figure 6B) but did not result in phagocytosis. scIV.3-IdeS-treated platelets decreased platelet phagocytosis in samples from 2 ITP donors (Figure 6E). Taken together, these data demonstrate

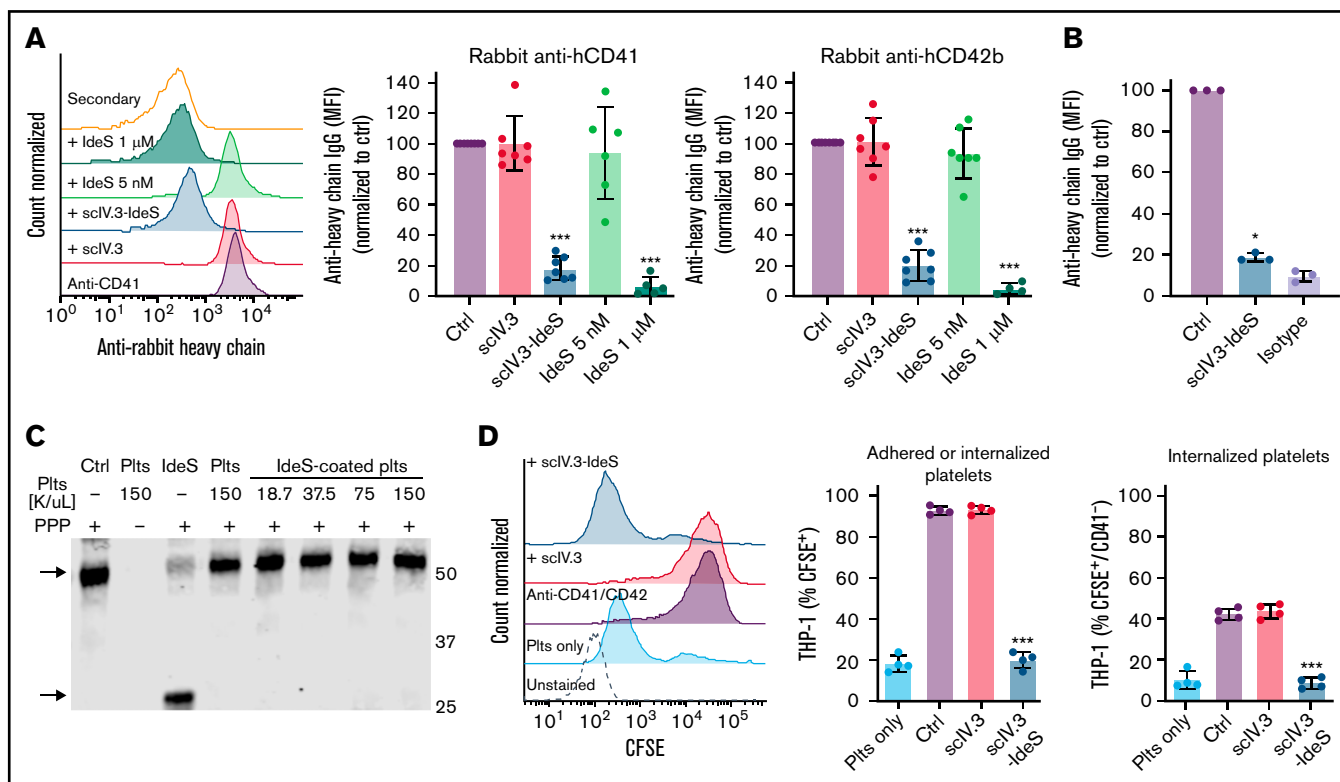


Figure 4. scIV.3-IdeS bound to platelet Fc γ RIIA cleaves antiplatelet antibodies and prevents in vitro phagocytosis. (A) Platelets treated with scIV.3 (5 nM), IdeS, and scIV.3-IdeS (5 nM) were incubated with rabbit anti-human CD41 or CD42b antibodies, and the amount of undigested antibody bound to platelets was quantified by flow cytometry with an anti-rabbit heavy chain antibody. Data normalized to control median fluorescence intensity (MFI). (B) Platelets coated in rabbit anti-human CD41 polyclonal antibodies were treated with scIV.3-IdeS (5 nM) or control. The amount of undigested antibody bound to platelets was quantified by flow cytometry using an antibody specific for the heavy chain of rabbit IgG. (C) Human IgG western blot, representative of 3 independent experiments, of platelet-poor plasma (PPP) incubated with increasing concentrations of scIV.3-IdeS-coated platelets ($18.7\text{--}150 \times 10^6/\text{mL}$) for 1 hour. PPP was also incubated with control, untreated platelets, or IdeS (1 μM). IdeS-treated samples lacked the full-length IgG heavy chain (arrow; upper band) and had an Fc cleavage product (arrow; lower band). (D) CFSE-stained platelets treated with scIV.3 or scIV.3-IdeS in the presence of rabbit anti-human (CD41 and CD42b) antibodies were added to THP-1 cells. After 1 hour, THP-1 cells were stained with a platelet-specific (PE-conjugated CD42a) antibody to distinguish THP-1 cells that had adhered (CFSE $^+$ /CD42a $^+$) or internalized (CFSE $^+$ /CD42a $^-$) platelets (data represent mean \pm standard deviation; 1-way analysis of variance; n = 4). * $P < .05$, *** $P < .001$.

that platelet-targeted IdeS can neutralize the Fc-dependent effector functions of ITP and HIT antibodies from patient sera.

Discussion

IdeS is a promising new therapy for treating IgG-driven disorders, but its adverse effects limit current clinical use to sensitized kidney transplantation patients. In this study, we found that recombinant IdeS, modified to bind to Fc γ RIIA (scIV.3-IdeS), cleaved antiplatelet IgG, blocked Fc γ RIIA-mediated platelet activation, and prevented phagocytosis in vitro without a significant decrease in nonpathogenic IgG. Moreover, in passive murine models of ITP, transfused platelets treated with scIV.3-IdeS had prolonged circulation compared with control. Together, these results suggest that anchoring IdeS to transfused platelets to prolong their circulation could represent a life-saving treatment for patients with severe bleeding and IgG-mediated platelet transfusion refractoriness.

Although both Fc receptor-dependent and -independent platelet clearance occurs in patients with ITP, the Fc receptors on macrophages in the reticuloendothelial system are primarily responsible for the clearance of IgG-coated platelets.²⁷⁻²⁹ A single IdeS molecule

cleaves >2000 IgG molecules; anchoring IdeS to Fc γ RIIA (1000-5000 copies per platelet) should provide sufficient coverage to digest all bound antiplatelet IgG.³⁰ In our study, we found that platelet-bound IdeS could remove the Fc portion of antiplatelet IgG from platelets and prevent them from being phagocytosed by the macrophages in vitro. Interestingly, we found that scIV.3-IdeS could cleave IgG from the surface of platelets whether it was added before or after the platelets were coated with antiplatelet antibodies. The ability of scIV.3-IdeS to protect transfused platelets from clearance in a murine model of ITP with polyclonal rabbit antibodies against multiple platelet antigens suggests that scIV.3-IdeS can broadly neutralize antiplatelet IgG regardless of antibody specificity.

We observed that prophylactic IV injection of scIV.3-IdeS into mice with human Fc receptors reduced platelet clearance in a passive model of ITP using RAMS to multiple platelet antigens (Figure 5). One potential limitation of directly administering scIV.3-IdeS is whether IdeS bound to the surface of macrophages alters antibody-mediated phagocytosis of pathogens. The localization of IdeS to the surface of platelets seems to be advantageous in limiting the clearance of nonpathogenic IgG and could conceivably be achieved

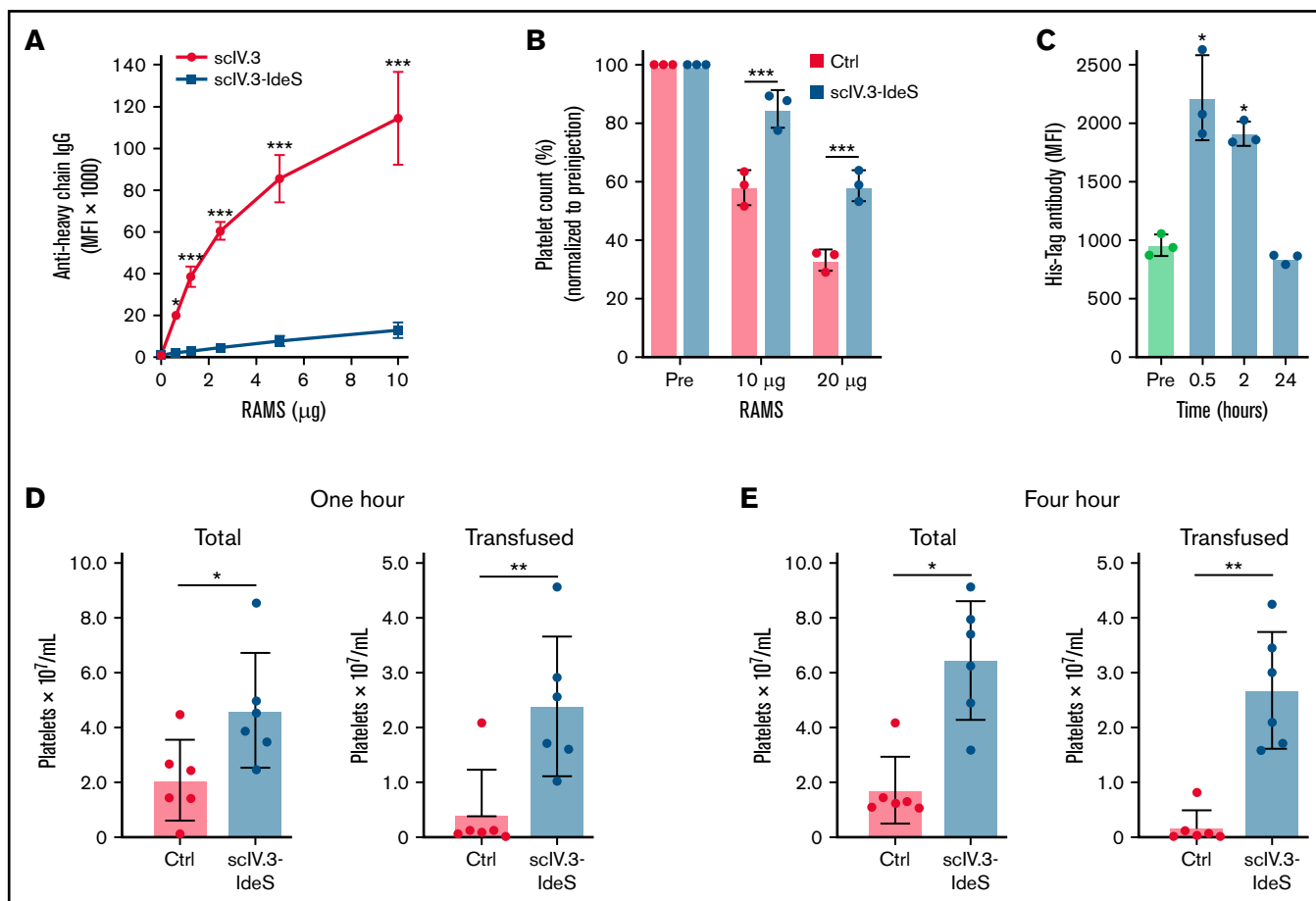


Figure 5. IdeS-IV.3-treated platelets have increased survival in murine models of ITP. (A) Mouse platelets expressing Fc γ RIIA were treated in vitro with sclV.3 or sclV.3-IdeS and then incubated with increasing concentrations of RAMS, and full-length platelet-bound IgG was measured ($n = 3$). (B) Mice expressing human Fc receptors were treated with control or IV.3-IdeS (10 μ g) and then injected with 10 or 20 μ g of RAMS. Platelet counts were performed 24 hours after RAMS injection and were normalized to pre-IgG injection (pre) measurements. (C) The amount of surface-bound His-tagged sclV.3-IdeS on mouse platelets was quantified by flow cytometry 0.5, 2, and 24 hours after IV.3-IdeS treatment. CFSE-labeled mouse platelets expressing Fc γ RIIA were treated with sclV.3-IdeS or control and transfused into mice that were injected with RAMS 24 hours before transfusion. (D-E) The total and transfused platelet counts were measured using a Cytex Aurora flow cytometer at 1 (D) and 4 hours (E) posttransfusion (data represent mean \pm standard deviation; 1-way analysis of variance). * $P < .05$, ** $P < .01$, *** $P < .001$. MFI, median fluorescence intensity.

by targeting platelet-specific receptors, such as α IIb, GPVI, or GPIIb/III. However, these platelet-specific targets for IdeS were avoided in this study because of concerns scFv could impair hemostasis or sterically hinder antiplatelet IgG from binding platelets, which could prevent the antiplatelet IgG from being cleaved. Additional studies will be needed to determine the optimal means of targeting IdeS to the platelet surface.

A targeted IdeS therapeutic approach could expand the clinical indications of IdeS for ITP as well as other IgG-mediated disorders. Among patients with anti-glomerular basement membrane antibodies treated with IdeS, >50% had their pathogenic antibodies return to toxic levels and had to resume conventional treatments to decrease pathogenic antibodies.^{8,31} Anchoring IdeS to a cellular target can lower the dose of IdeS and may allow the administration of repeated doses of IdeS. Future work will focus on determining the impact that targeting IdeS to the surface of platelets has on its immunogenicity in animal models, especially after multiple doses.

Phagocytosis of platelets incubated with rabbit anti-CD41 and anti-CD42 antibodies by THP-1 cells was profoundly reduced by sclV.3-IdeS. In all samples from patients with ITP tested, there was a considerable decrease in full-length antibody binding to platelets coated with IdeS, and this was effective in significantly reducing phagocytosis in 2 of 3 patient samples. Future studies to elucidate the broad therapeutic potential of sclV.3-IdeS in patients with ITP must examine patient sera with high titers of antibody or different antigenic targets yielding unique pathogenic antibodies on the surface of platelets. Furthermore, although a majority of antiplatelet antibodies in patients with ITP are IgG, sporadic cases of antiplatelet IgM or IgA antibodies have also been detected in these patients.²⁷ Because IdeS cleavage is IgG specific, individuals with ITP mediated by IgM or IgA ITP antibodies would not benefit from sclV.3-IdeS treatment.

Platelet clearance and activation can occur in autoimmune disorders through the formation of immune complexes that activate platelets via Fc γ RIIA.^{32,33} IV.3 can block IgG-mediated platelet activation and thrombosis.³⁴ In this study, we show that sclV.3 or sclV.3-IdeS

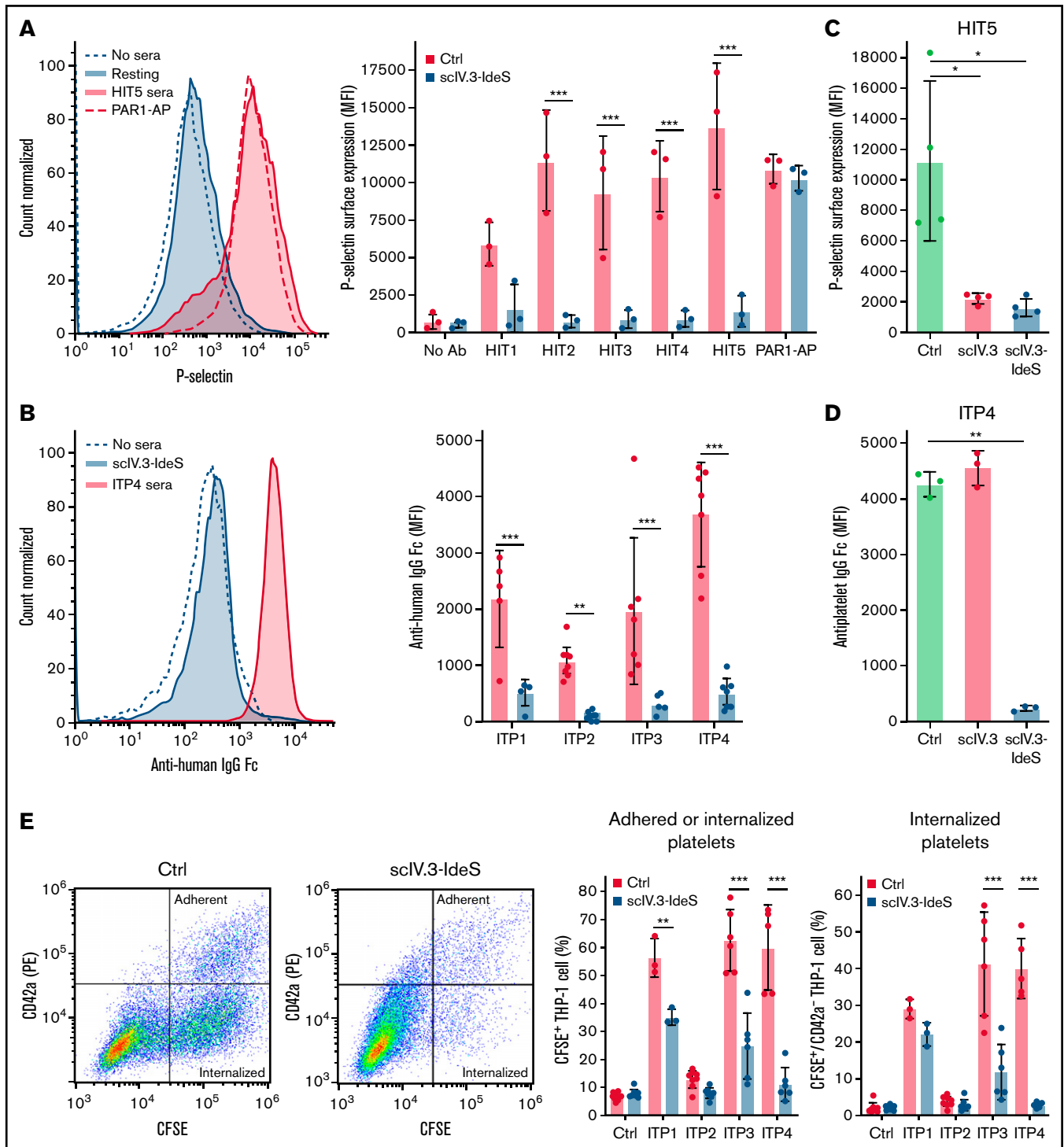


Figure 6. scIV.3-IdeS binds to platelet Fc γ RIIA cleaves antiplatelet antibodies from HIT and ITP sera and prevents in vitro phagocytosis. (A) Platelet factor 4 (PF4)-dependent P-selectin expression assays were performed using sera from 5 patients with HIT and platelets treated with scIV.3-IdeS (5 nM) or vehicle. (B) Platelets treated with scIV.3-IdeS or vehicle control were incubated with sera from patients with ITP, stained with a fluorescein isothiocyanate (FITC)-conjugated mouse anti-human Fc-specific antibody, and quantified by flow cytometry (data represent mean \pm standard deviation [SD]; 2-way analysis of variance [ANOVA]; n = 4-6). (C) PF4-dependent P-selectin expression assay was performed with platelets treated with scIV.3 or scIV.3-IdeS using sera from a patient with HIT. (D) Platelets treated with scIV.3 or scIV.3-IdeS were incubated with sera from a patient with ITP and then stained with an FITC-conjugated mouse anti-human Fc-specific antibody. (E) CFSE-stained human platelets treated with scIV.3-IdeS (5 nM) or vehicle control were incubated with sera from patients with ITP and were then added to THP-1 cells. THP-1 cells were stained with a platelet-specific (PE-conjugated CD42a) antibody to distinguish THP-1 cells that had adhered (CFSE⁺/CD42a⁺) or internalized (CFSE⁺/CD42a⁻) platelets (data represent mean \pm SD; 1-way ANOVA; n = 4). *P < .05, **P < .01, ***P < .001. MFI, median fluorescence intensity.

blocks Fc γ RIIA-mediated platelet activation via anti-CD9 antibodies and sera from patients with HIT. sclV.3-IdeS was more effective at blocking Fc γ RIIA-mediated platelet activation than sclV.3 at concentrations in which platelet Fc γ RIIA was not fully occupied (Figure 3). The cleavage of pathogenic IgG complexes by platelets coated in sclV.3-IdeS can neutralize IgG complexes from activating platelets, potentially extending to platelet protection even after sclV.3-IdeS has been cleared. Future experiments must be performed to determine whether sclV.3-IdeS offers heightened protection from IgG complex-mediated thrombosis in murine models compared with sclV.3.

The use of sclV.3-IdeS alone or in conjunction with corticosteroids could be a minimally invasive approach to raise platelet counts in patients with ITP. Furthermore, other acute IgG-driven platelet diseases with clearly defined Fc-dependent pathogenesis, such as vaccine-induced thrombocytopenia and thrombosis³⁵ or HIT, would be predicted to respond to sclV.3-IdeS therapy. Pretreatment of platelets with sclV.3-IdeS before transfusion could also provide a means of rapidly raising the platelet count in patients with severe bleeding who have ITP or platelet refractoriness as a result of alloimmunization. Importantly, adapting cell type-specific targeting of IdeS to treat other IgG-mediated immune disorders is practical depending on tissue accessibility and identification of cell type-specific ligands that can be targeted with high affinity.

Acknowledgments

The authors thank Jeffrey V. Ravetch for providing mice that express human Fc γ receptors and Eric Smith for help in editing the manuscript. All flow cytometric data were acquired using equipment maintained by the Research Flow Cytometry Core

References

1. Arnold DM. Bleeding complications in immune thrombocytopenia. *Hematology Am Soc Hematol Educ Program*. 2015;2015:237-242.
2. Peterson JA, McFarland JG, Curtis BR, Aster RH. Neonatal alloimmune thrombocytopenia: pathogenesis, diagnosis and management. *Br J Haematol*. 2013;161(1):3-14.
3. Toor AA, Choo SY, Little JA. Bleeding risk and platelet transfusion refractoriness in patients with acute myelogenous leukemia who undergo autologous stem cell transplantation. *Bone Marrow Transplant*. 2000;26(3):315-320.
4. von Pawel-Rammingen U, Johansson BP, Björck L. IdeS, a novel streptococcal cysteine proteinase with unique specificity for immunoglobulin G. *EMBO J*. 2002;21(7):1607-1615.
5. Kizlik-Masson C, Deveuve Q, Zhou Y, et al. Cleavage of anti-PF4/heparin IgG by a bacterial protease and potential benefit in heparin-induced thrombocytopenia. *Blood*. 2019;133(22):2427-2435.
6. Johansson BP, Shannon O, Björck L. IdeS: a bacterial proteolytic enzyme with therapeutic potential. *PLoS One*. 2008;3(2):e1692.
7. Winstedt L, Järnum S, Nordahl EA, et al. Complete removal of extracellular IgG antibodies in a randomized dose-escalation phase I study with the bacterial enzyme IdeS – a novel therapeutic opportunity. *PLoS One*. 2015;10(7):e0132011.
8. Shin JI, Geetha D, Szpirt WM, Windpessl M, Kronbichler A. Anti-glomerular basement membrane disease (Goodpasture disease): from pathogenesis to plasma exchange to IdeS. *Ther Apher Dial*. 2022;26(1):24-31.
9. Smith P, DiLillo DJ, Bournazos S, Li F, Ravetch JV. Mouse model recapitulating human Fc γ receptor structural and functional diversity. *Proc Natl Acad Sci USA*. 2012;109(16):6181-6186.
10. Crow AR, Lazarus AH. Role of Fc γ receptors in the pathogenesis and treatment of idiopathic thrombocytopenic purpura. *J Pediatr Hematol Oncol*. 2003;25(suppl 1):S14-S18.
11. Ahmed MU, Receveur N, Janus-Bell E, et al. Respective roles of glycoprotein VI and Fc γ RIIA in the regulation of α IIb β 3-mediated platelet activation to fibrinogen, thrombus buildup, and stability. *Res Pract Thromb Haemost*. 2021;5(5):e12551.
12. Patel P, Michael JV, Naik UP, McKenzie SE. Platelet Fc γ RIIA in immunity and thrombosis: adaptive immunothrombosis. *J Thromb Haemost*. 2021;19(5):1149-1160.

in the Division of Rheumatology at Cincinnati Children's Hospital Medical Center. The visual abstract was created with BioRender.com.

This work was funded in part through National Institutes of Health grants from National Heart, Lung, and Blood Institute R00 HL136784 (B.E.T.), K23HL151872 (D.R.L.), Office of Research Infrastructure Programs S10OD025045 (Research Flow Cytometry Core), and National Institute of Diabetes and Digestive and Kidney Diseases Cooperative Centers of Excellence in Hematology grant U54DK126108; and a Trustee Grant Award from Cincinnati Children's Hospital (B.E.T.).

Authorship

Contribution: D.R.L., E.N.S., B.Z., C.F.G., and B.E.T. acquired and analyzed data; and D.R.L., E.N.S., G.B.-C., B.R.C., C.F.G., B.E.T., and J.S.P. designed research studies and wrote the manuscript.

Conflict-of-interest disclosure: B.R.C. is a consultant for Rallybio and argenx. The remaining authors declare no competing financial interests.

ORCID profiles: D.R.L., 0000-0002-3887-389X; B.Z., 0000-0003-3458-8220; G.B.-C., 0000-0002-1062-6774; B.R.C., 0000-0001-9553-9081; C.F.G., 0000-0001-9740-7672.

Correspondence: Benjamin E. Tourdot, Division of Experimental Hematology and Cancer Biology, University of Cincinnati College of Medicine, Cincinnati Children's Hospital Medical Center, 3333 Burnet Ave, MLC 7015, Cincinnati, OH 45229; e-mail: benjamin.tourdot@cchmc.org.

13. Looney RJ, Abraham GN, Anderson CL. Human monocytes and U937 cells bear two distinct Fc receptors for IgG. *J Immunol.* 1986;136(5): 1641-1647.
14. Chen B, Vousden KA, Naiman B, et al. Humanised effector-null Fc γ RIIA antibody inhibits immune complex-mediated proinflammatory responses. *Ann Rheum Dis.* 2019;78(2):228-237.
15. Sardjono CT, Wines B, Powel M, Hogarth M. Epitope mapping of Fc gamma RIIa monoclonal antibodies. *Indones J Biotechnol.* 2008;13(1): 1030-1037.
16. Greineder CF, Villa CH, Walsh LR, et al. Site-specific modification of single-chain antibody fragments for bioconjugation and vascular immunotargeting. *Bioconjug Chem.* 2018;29(1):56-66.
17. Zhang B, Vidanapathirana SM, Greineder CF. Site-specific modification of single-chain affinity ligands for fluorescence labeling, radiolabeling, and bioconjugation. *Methods Mol Biol.* 2021;2355:163-173.
18. Ackerman ME, Moldt B, Wyatt RT, et al. A robust, high-throughput assay to determine the phagocytic activity of clinical antibody samples. *J Immunol Methods.* 2011;366(1-2):8-19.
19. Qiao J, Al-Tamimi M, Baker RI, Andrews RK, Gardiner EE. The platelet Fc receptor, Fc γ RIIa. *Immunol Rev.* 2015;268(1):241-252.
20. Protsy MB, Watkins NA, Colombo D, et al. Identification of Tspan9 as a novel platelet tetraspanin and the collagen receptor GPVI as a component of tetraspanin microdomains. *Biochem J.* 2009;417(1):391-400.
21. Horsewood P, Hayward C, Warkentin TE, Kelton JG. Investigation of the mechanisms of monoclonal antibody-induced platelet activation. *Blood.* 1991;78(4):1019-1026.
22. Qi R, Ozaki Y, Kuroda K, et al. Differential activation of human platelets induced by Fc gamma receptor II cross-linking and by anti-CD9 monoclonal antibody. *J Immunol.* 1996;157(12):5638-5645.
23. Vindebro R, Spoerry C, von Pawel-Rammingen U. Rapid IgG heavy chain cleavage by the streptococcal IgG endopeptidase IdeS is mediated by IdeS monomers and is not due to enzyme dimerization. *FEBS Lett.* 2013;587(12):1818-1822.
24. Boylan B, Gao C, Rathore V, Gill JC, Newman DK, Newman PJ. Identification of Fc γ RIIa as the ITAM-bearing receptor mediating α IIb β 3 outside-in integrin signaling in human platelets. *Blood.* 2008;112(7):2780-2786.
25. Zhi H, Rauova L, Hayes V, et al. Cooperative integrin/ITAM signaling in platelets enhances thrombus formation in vitro and in vivo. *Blood.* 2013; 121(10):1858-1867.
26. Padmanabhan A, Jones CG, Curtis BR, et al. A novel PF4-dependent platelet activation assay identifies patients likely to have heparin-induced thrombocytopenia/thrombosis. *Chest.* 2016;150(3):506-515.
27. Swinkels M, Rijkers M, Voorberg J, Vidarsson G, Leebeek FWG, Jansen AJG. Emerging concepts in immune thrombocytopenia. *Front Immunol.* 2018;9:880.
28. Al-Samkari H, Rosovsky RP, Karp Leaf RS, et al. A modern reassessment of glycoprotein-specific direct platelet autoantibody testing in immune thrombocytopenia. *Blood Adv.* 2020;4(1):9-18.
29. Hicks SM, Coupland LA, Jahangiri A, Choi PY, Gardiner EE. Novel scientific approaches and future research directions in understanding ITP. *Platelets.* 2020;31(3):315-321.
30. Kahn F, Shannon O, Björck L. Suggested treatment of serious complications to COVID-19 vaccination with IdeS, a bacterial antibody-cleaving enzyme. *J Thromb Haemost.* 2021;19(9):2363-2364.
31. Stubbs MJ, Thomas M, Vendramin C, et al. Administration of immunoglobulin G-degrading enzyme of *Streptococcus pyogenes* (IdeS) for persistent anti-ADAMTS13 antibodies in patients with thrombotic thrombocytopenic purpura in clinical remission. *Br J Haematol.* 2019;186(1):137-140.
32. Cloutier N, Allaey I, Marcoux G, et al. Platelets release pathogenic serotonin and return to circulation after immune complex-mediated sequestration. *Proc Natl Acad Sci USA.* 2018;115(7):E1550-E1559.
33. Melki I, Allaey I, Tessandier N, et al. Platelets release mitochondrial antigens in systemic lupus erythematosus. *Sci Transl Med.* 2021;13(581): eaav5928.
34. Perdomo J, Leung HHL, Ahmadi Z, et al. Neutrophil activation and NETosis are the major drivers of thrombosis in heparin-induced thrombocytopenia. *Nat Commun.* 2019;10(1):1322.
35. Vayne C, Rollin J, Gruel Y, et al. PF4 immunoassays in vaccine-induced thrombotic thrombocytopenia. *N Engl J Med.* 2021;385(4):376-378.