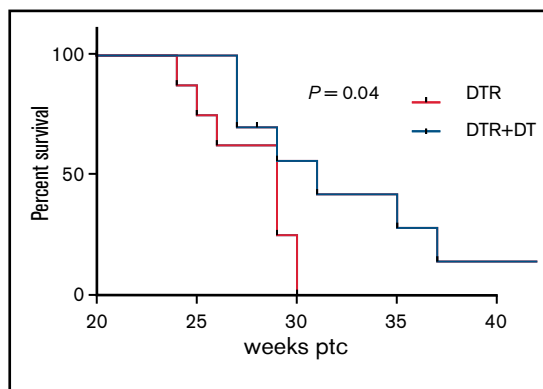


Akhmetzyanova I, Aaron T, Galbo P, et al. Tissue-resident macrophages promote early dissemination of multiple myeloma via IL-6 and TNF α . *Blood Adv.* 2021;5(18):3592-3608.

In Figure 1D on page 3594, the colors of the survival curves were reversed. The upper curve (DTR+DT) should be blue, and the lower curve (DTR) should be red. The corrected Figure 1D is shown below. The publisher apologizes for the error, which has been corrected in the published article.



DOI 10.1182/bloodadvances.2022007214

© 2022 by The American Society of Hematology. Licensed under Creative Commons Attribution-NonCommercial-NoDerivatives 4.0 International (CC BY-NC-ND 4.0), permitting only noncommercial, nonderivative use with attribution. All other rights reserved.