

Khurana A, Novo M, Nowakowski GS, et al. Clinical manifestations of, diagnostic approach to, and treatment of neurolymphomatosis in the rituximab era. *Blood Adv.* 2021;5(5):1379-1387.

In Figure 4 on page 1385, the color key in the upper right corner of each panel was incorrect. “No Rituximab” should be red, and “Rituximab” should be blue. The corrected figure is shown below. The publisher apologizes for the error, which has been corrected in the published article.

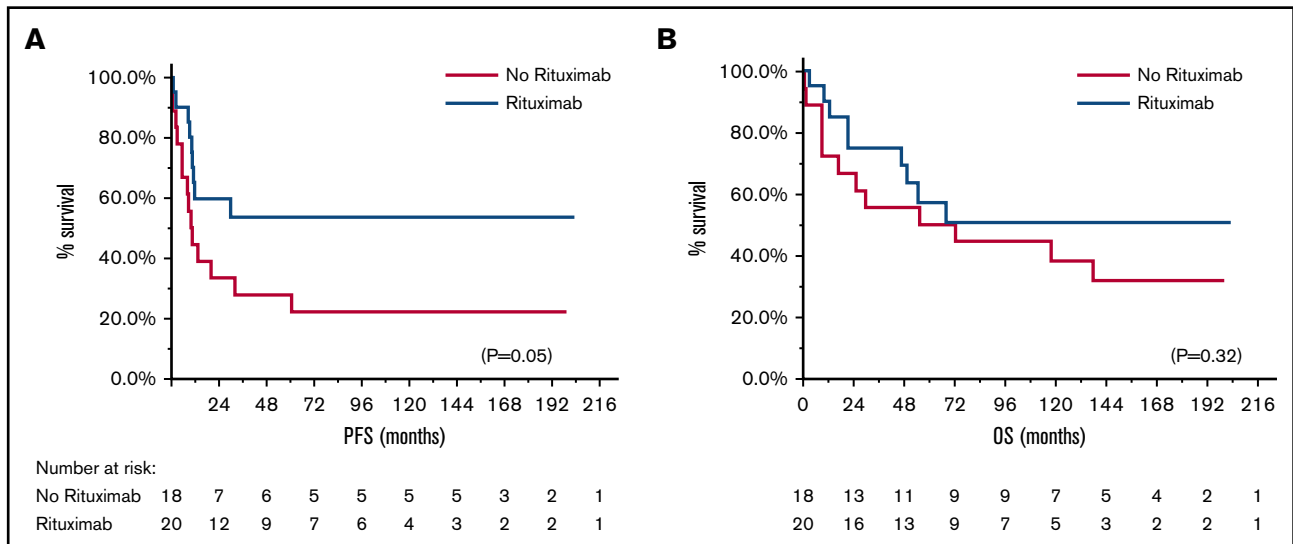


Figure 4. Kaplan-Meier curves. (A) PFS for cases receiving frontline rituximab-containing regimens vs treatments not containing rituximab: median PFS, NR; 95% CI, 11.0 months-NR vs median PFS, 11.0 months; 95% CI, 6.1-32.8 ($P = .05$). (B) OS for cases receiving frontline rituximab-containing regimens vs those not containing rituximab: median OS, NR; 95% CI, 21.7 months-NR vs median OS, 64 months; 95% CI, 9.5-NR ($P = .32$).

DOI 10.1182/bloodadvances.2021004700

© 2021 by The American Society of Hematology

Downloaded from <http://ashpublications.net/bloodadvances/article-pdf/5/7/2053/1804870/advancesadv2021004700.pdf> by guest on 08 June 2024