

Clinical impact of *NPM1*-mutant molecular persistence after chemotherapy for acute myeloid leukemia

Ing S. Tiong,^{1,4,*} Richard Dillon,^{5,6,*} Adam Ivey,^{1,2,*} James A. Kuzich,³ Nisha Thiagarajah,^{4,7} Kirsty M. Sharplin,⁸ Chung Hoow Kok,⁹ Aditya Tedjaseputra,¹⁰ James P. Rowland,¹¹ Carolyn S. Grove,¹² Emad Abro,¹¹ Jake Shortt,^{10,13} Devendra K. Hiwase,⁸ Ashish Bajel,^{4,7} Nicola E. Potter,⁵ Matthew L. Smith,¹⁴ Claire J. Hemmaway,¹⁵ Abin Thomas,¹⁶ Amanda F. Gilkes,¹⁷ Nigel H. Russell,^{6,†} and Andrew H. Wei^{1,2,†}

¹Department of Haematology, The Alfred Hospital and Monash University, Melbourne, VIC, Australia; ²Australian Centre for Blood Diseases, Monash University, Melbourne, VIC, Australia; ³Austin Health and Olivia Newton John Cancer Research Institute, Melbourne, VIC, Australia; ⁴Peter MacCallum Cancer Centre, Melbourne, VIC, Australia; ⁵Department of Medical and Molecular Genetics, King's College, London, United Kingdom; ⁶Guy's Hospital, London, United Kingdom; ⁷Royal Melbourne Hospital, Melbourne, VIC, Australia; ⁸Royal Adelaide Hospital, Adelaide, SA, Australia; ⁹Precision Medicine Theme, South Australian Health and Medical Research Institute, Adelaide, SA, Australia; ¹⁰Monash Health, Melbourne, VIC, Australia; ¹¹Princess Alexandra Hospital, Woolloongabba, QLD, Australia; ¹²Department of Haematology, Sir Charles Gairdner Hospital and PathWest, Perth, WA, Australia; ¹³School of Clinical Sciences at Monash Health, Monash University, Clayton, VIC, Australia; ¹⁴Department of Haematology, St. Bartholomew's Hospital, London, United Kingdom; ¹⁵Department of Haematology, Auckland City Hospital, Auckland, New Zealand; and ¹⁶Centre for Trials Research and ¹⁷Department of Haematology, Cardiff University, Cardiff, United Kingdom

Key Points

- Postchemotherapy, of 100 CR_{MRD+} patients, 42% remained progression free at 1 year (spontaneous CR_{MRD-} or low-level *NPM1*mut persistence).
- Relapse is associated with *FLT3*-ITD and poor *NPM1*mut MRD response after chemotherapy. MRD-directed preemptive therapy may prolong remission.

Monitoring of *NPM1* mutant (*NPM1*mut) measurable residual disease (MRD) in acute myeloid leukemia (AML) has an established role in patients who are treated with intensive chemotherapy. The European LeukemiaNet has defined molecular persistence at low copy number (MP-LCN) as an MRD transcript level <1% to 2% with a <1-log change between any 2 positive samples collected after the end of treatment (EOT). Because the clinical impact of MP-LCN is unknown, we sought to characterize outcomes in patients with persistent *NPM1*mut MRD after EOT and identify factors associated with disease progression. Consecutive patients with newly diagnosed *NPM1*mut AML who received ≥ 2 cycles of intensive chemotherapy were included if bone marrow was *NPM1*mut MRD positive at the EOT, and they were not transplanted in first complete remission. One hundred patients were followed for a median of 23.5 months; 42% remained free of progression at 1 year, either spontaneously achieving complete molecular remission (CR_{MRD-}; 30%) or retaining a low-level *NPM1*mut transcript (12% for ≥ 12 months and 9% at last follow-up). Forty percent met the criteria for MP-LCN. Preemptive salvage therapy significantly prolonged relapse-free survival. Risk factors associated with disease progression were concurrent *FLT3*-internal tandem duplication at diagnosis and suboptimal MRD response (*NPM1*mut reduction <4.4-log) at EOT.

Introduction

Acute myeloid leukemia (AML) with mutated *NPM1* (*NPM1*mut) is the most common subtype of AML with recurrent genetic abnormalities.¹ Monitoring *NPM1*mut measurable residual disease (MRD) has an established role in the evaluation of patients after intensive chemotherapy^{2,3} and is an emerging

Submitted 7 June 2021; accepted 15 July 2021; prepublished online on *Blood Advances* First Edition 23 September 2021; final version published online 6 December 2021. DOI 10.1182/bloodadvances.2021005455.

*I.S.T., R.D., and A.I. contributed equally to this study.

†N.H.R. and A.H.W. contributed equally to this study.

Data sharing requests should be sent to Andrew H. Wei (wei.a@wehi.edu.au).

The full-text version of this article contains a data supplement.

© 2021 by The American Society of Hematology. Licensed under Creative Commons Attribution-NonCommercial-NoDerivatives 4.0 International (CC BY-NC-ND 4.0), permitting only noncommercial, nonderivative use with attribution. All other rights reserved.

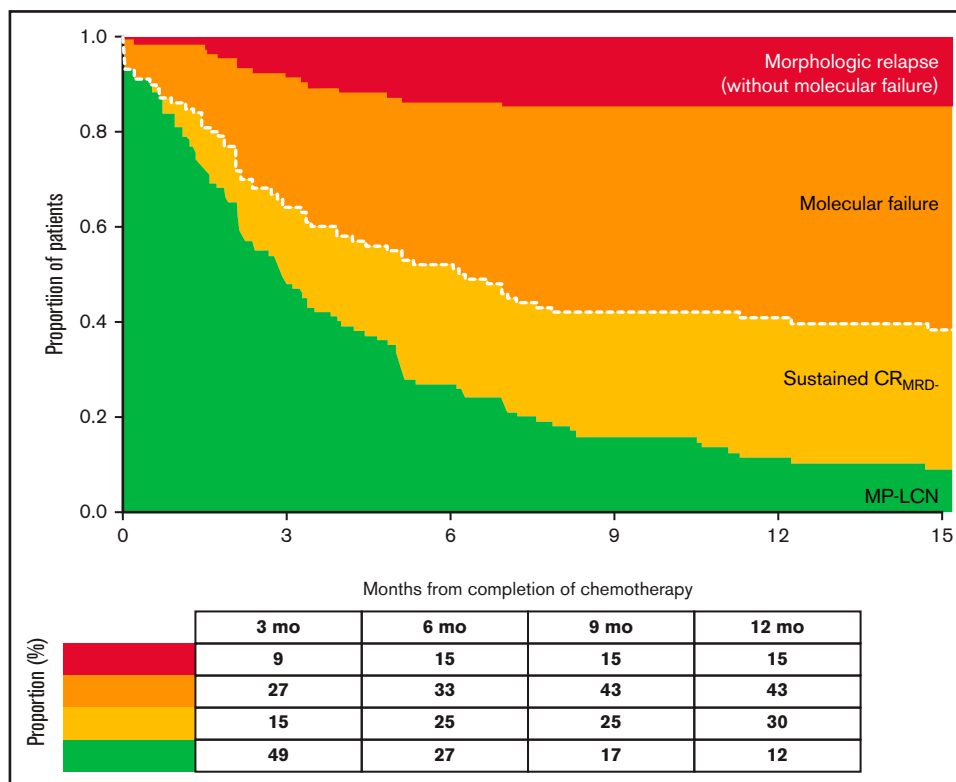


Figure 1. Clinical impact of patients with detectable *NPM1*mut MRD at completion of chemotherapy. Conversion from initial state (molecular persistence) to different outcomes censored after the first event, either sustained CR_{MRD-}, molecular failure, or morphologic relapse without preceding molecular failure. The proportion of patients in each category at specified time points are listed in the table below.

regulatory approval end point.⁴ Approximately 25% to 50% of patients with *NPM1*mut have persistent MRD at the end of treatment (EOT), which is associated with a higher risk for relapse.^{2,5,6} The European LeukemiaNet (ELN) has defined molecular persistence at low copy number (MP-LCN) as MRD positivity in complete remission (CR) with <1000 to 2000 transcripts per 10⁵ copies of *ABL* and a relative increase <1-log between 2 positive samples collected after EOT.⁷ The UK National Cancer Research Institute working group reported the impact of pretransplant *NPM1*mut MRD on relapse risk after allogeneic hematopoietic stem cell transplantation (HSCT);⁸ however, the clinical fate of patients with persistent *NPM1*mut not undergoing transplantation is unknown. Therefore, we sought to characterize the clinical impact of *NPM1*mut MRD in patients at EOT and identify the factors associated with disease progression.

Methods

Consecutive patients with newly diagnosed *NPM1*mut AML were included if they had received ≥2 cycles of intensive chemotherapy, *NPM1*mut MRD was present in the bone marrow at EOT, and the patient was not planned for HSCT in the first CR. Patients in the United Kingdom were prospectively enrolled in the National Cancer Research Institute AML17 study (2009-2014) and AML19 study (2017 to June of 2019) (see supplemental Figure 1 for consort diagram). Australian patients were retrospectively identified (2015-2020). Bone marrow samples were analyzed by quantitative reverse

transcription polymerase chain reaction, as previously described,² with the copy numbers expressed per 10⁵ copies of *ABL*. The study was approved by the Alfred Health (88/20) and Wales (14/WA/1056) research ethics committee and was conducted in accordance with the Declaration of Helsinki. ELN MRD recommended definitions⁷ of molecular progression or relapse (collectively termed molecular failure), MP-LCN, and complete molecular remission (CR_{MRD-}) were used. The ELN criteria for molecular failure were not strictly met in 2 subjects: 1 for molecular progression not reaching a ≥1-log₁₀ increase, and another had molecular relapse without a confirmation sample. Survival estimates were calculated from EOT to death (overall survival [OS]), and/or morphologic relapse (relapse-free survival [RFS]), and/or molecular failure (event-free survival [EFS]). The Cox model was used for univariate and multivariate analyses.

Results and discussion

A total of 100 patients had *NPM1*mut MRD detected at a median of 36 days (range, 19-90) from the last course of chemotherapy (characteristics are summarized in supplemental Figure 2 and supplemental Table 1). Median age was 50 years, 85% had a normal karyotype, and 39% had concurrent *FLT3*-internal tandem duplication (ITD) at diagnosis (allelic ratio ≥ 0.5 in 17%). At EOT, the median *NPM1*mut level was 13 copies (range, 0.3-20756; 5 patients had levels > 2000), and median reduction from baseline was 4.5-log (range, 1.8-6.0; baseline data were missing in 7

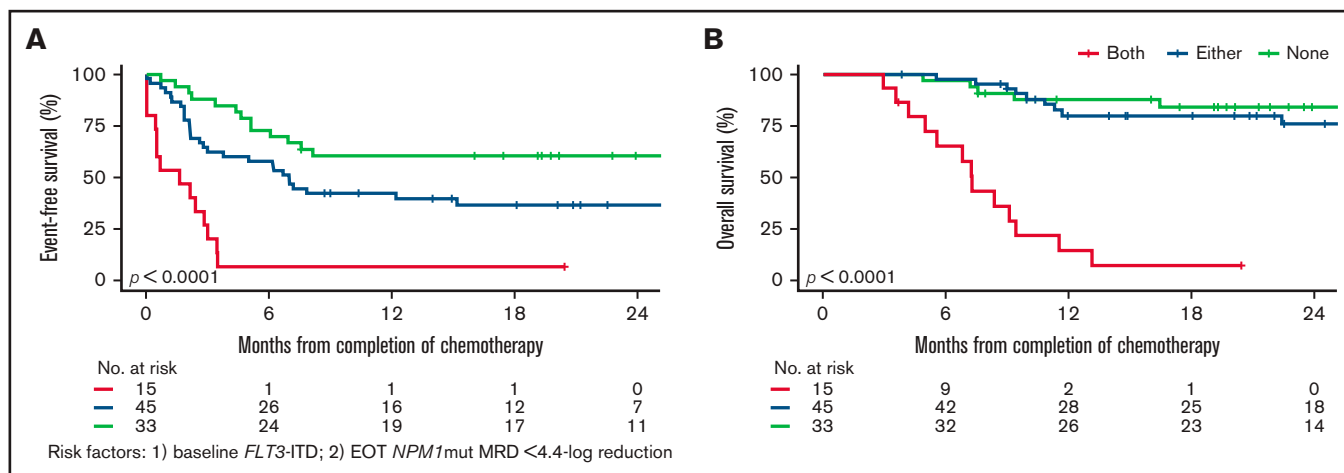


Figure 2. Kaplan-Meier survival curves. (A) Event-free survival and (B) overall survival according to *FLT3*-ITD status at diagnosis and at EOT *NPM1*mut reduction (4.4-log) from baseline.

patients). In this study cohort, MRD levels at EOT were comparable, irrespective of the number of chemotherapy courses completed (range, 2-5) (Supplemental Figure 3). Patients with longer time to EOT MRD assessment had longer EFS and RFS (Supplemental Figure 4).

Patients were followed for a median of 23.5 months: 29 patients died, including 2 after preemptive intensive salvage. A total of 41 patients experienced morphologic relapse, including 16 without detection of preceding molecular failure: 8 had MRD testing within 90 days of relapse (range, 6-73 days), 3 were tested after a >90 day-interval; 1 had extramedullary disease progression; 1 had *NPM1* wild-type relapse; and 3 were not monitored. Thirty-nine (40% of 97 monitored) had subsequent MRD levels meeting the criteria for MP-LCN, with a 2-year EFS of 58% (supplemental Figure 5).

To study the clinical impact of persistent *NPM1*mut MRD detected at the EOT, we studied the fate of patients at 3-month intervals. By the first landmark analysis at 3 months, 9% of patients had experienced morphologic relapse, 27% had molecular failure, and 15% spontaneously achieved sustained CR_{MRD-} (Figure 1). By the 12-month landmark, 15% had morphologically relapsed, 43% had molecular failure, 30% had CR_{MRD-} , and 12% had MP-LCN (Figure 1). At the final follow-up, 9 patients (9%) had MP-LCN persisting for a median of 14 months (range, 9-32 months) and survived for a median of 20.5 months (range, 9-35 months). From study entry, 31 patients (32%) spontaneously achieved CR_{MRD-} that lasted for >6 months, with the majority (81%) achieving CR_{MRD-} within the first 6 months and only 1 patient subsequently progressing during the follow-up period. MP-LCN is a well characterized phenomenon in core-binding factor AML.^{9,10} Persistence of *NPM1*mut transcripts above 1000 to 2000 copies per 10^5 *ABL* is associated with higher risk of disease relapse,^{5,6} leading to the adoption of this threshold by the ELN.⁷ We were unable to confirm this threshold in our study because patients received preemptive therapy prior to reaching this threshold. However, 10 patients with molecular failure (>1-log increase) who did not receive preemptive therapy all relapsed. Of the patients who remained event-free at last follow-up ($n = 39$), the highest recorded *NPM1*mut MRD level was only 90 copies. Paired peripheral blood and bone marrow sampling was not performed in this study. Therefore, the clinical relevance of MP-LCN in peripheral blood was not able to be addressed.

Among the 43 patients (44%) who experienced molecular failure within the first 12 months, 33 (77%) received preemptive salvage therapy prior to morphologic relapse, resulting in a significantly prolonged RFS compared to those not receiving preemptive therapy (median, 10.6 vs 0.7 months) (supplemental Figure 6). Time to molecular failure from EOT was similar between patients receiving or not receiving preemptive therapy (median, 64 vs 99 days).

Median time to initiation of preemptive therapy after molecular failure was 27 days (range, 9-149; supplemental Figure 7A), with therapy consisting of FLAG-based chemotherapy ($n = 13$), venetoclax plus low-dose cytarabine ($n = 11$), immediate HSCT ($n = 5$), or others (supplemental Figure 2). Of 10 patients not salvaged until morphologic relapse, the median interval between molecular failure and morphologic relapse was 21 days (range, 11-89; supplemental Figure 7B; salvage therapy is summarized in supplemental Figure 2). Various MRD-directed preemptive strategies have been used, ranging from azacitidine to intensive salvage chemotherapy^{8,11}; we previously reported the promising role of venetoclax-based low-intensity therapy in eliminating *NPM1*mut MRD in 11 of 12 (92%) patients treated.¹² The survival benefit of preemptive therapy requires future prospective evaluation.

Next, we examined variables associated with molecular failure, morphologic relapse, and death (supplemental Table 2). In univariate analyses, variables associated ($P < .1$) with molecular failure were white cell count and *FLT3*-ITD at diagnosis, chemotherapy courses received, and EOT *NPM1*mut MRD levels. In multivariate analyses (and confirmed by backward selection), only baseline *FLT3*-ITD and EOT *NPM1*mut reduction retained significance; an optimal *NPM1*mut reduction threshold of 4.4-log between baseline and EOT was determined by maximally selected rank statistics.¹³ Most patients with both adverse factors (16%) relapsed within 4 months (median, 1.4 months), and few survived beyond 12 months (median, 7.3 months). Patients with 0 or 1 risk factor had a 1-year EFS of 42% to 60% and an OS of 80% to 88% (Figure 2). The prognostic value of *NPM1*mut MRD after induction chemotherapy was reported previously, with MRD still detectable in peripheral blood after 2 induction cycles² and a <4-log reduction postinduction³ associated with 3-year relapse risks of 82% and 66%, respectively. In the subset analyses of the UK cohort, both adverse factors remained

significant, in addition to the peripheral blood MRD status after course 2 (data not shown).

A sensitivity analysis revealed a similar MRD log reduction at EOT between the UK and Australian cohorts (median, 4.6 vs 4.4 log), standard vs high-dose cytarabine induction (4.5 vs 4.8-log), and treatment or not with gemtuzumab ozogamicin (4.8 vs 4.5 log). Among patients with positive *FLT3*-ITD at diagnosis, a trend for greater MRD reduction at EOT was observed among those who received midostaurin (5.1 vs 4.4 log, $P = .18$), but conversion to CR_{MRD-} during the maintenance phase did not differ (36% vs 35%).

In conclusion, patients with *NPM1*mut MRD positivity after completing intensive chemotherapy and not undergoing HSCT in first remission have a variable course, with a substantial fraction (42%) remaining relapse-free at 1 year, either spontaneously achieving CR_{MRD-} (30%) or retaining low-level transcript in the bone marrow for ≥ 12 months (12%). Risk factors associated with subsequent disease progression include concurrent *FLT3*-ITD at diagnosis and suboptimal MRD response at the EOT. This information will be of value to clinicians using *NPM1*mut MRD to make EOT transplant decisions. The role of preemptive treatment role in the management of molecular failure remains to be determined.

Acknowledgments

A.H.W. received Medical Research Future Fund, Leukemia and Lymphoma Society (SCOR Strasser), National Health and Medical Research Council. R.D. and N.H.R. received Cancer Research UK, Blood Cancer UK, and the UK National Institute for Health Research.

Authorship

Contribution: I.S.T., R.D., A.I., N.H.R., and A.H.W. designed research, analyzed data, and wrote the manuscript and C.H.K.,

References

1. Swerdlow SH, Campo E, Harris NL, et al. *WHO Classification of Tumours of Haematopoietic and Lymphoid Tissues*. Vol. 2. Revised 4th ed. Lyon, France: International Agency for Research on Cancer; 2017.
2. Ivey A, Hills RK, Simpson MA, et al; UK National Cancer Research Institute AML Working Group. Assessment of minimal residual disease in standard-risk AML. *N Engl J Med*. 2016;374(5):422-433.
3. Balsat M, Renneville A, Thomas X, et al. Postinduction minimal residual disease predicts outcome and benefit from allogeneic stem cell transplantation in acute myeloid leukemia with *NPM1* mutation: a study by the Acute Leukemia French Association Group. *J Clin Oncol*. 2017; 35(2):185-193.
4. STAT. Kronos Bio speeds development of genetically targeted leukemia drug with unique trial design. Available at: <https://www.statnews.com/2021/03/04/kronos-bio-speeds-development-of-genetically-targeted-leukemia-drug-with-unique-trial-design>. Accessed 6 May 2021.
5. Krönke J, Schlenk RF, Jensen KO, et al. Monitoring of minimal residual disease in *NPM1*-mutated acute myeloid leukemia: a study from the German-Austrian acute myeloid leukemia study group. *J Clin Oncol*. 2011;29(19):2709-2716.
6. Shayegi N, Kramer M, Bornhäuser M, et al; Study Alliance Leukemia (SAL). The level of residual disease based on mutant *NPM1* is an independent prognostic factor for relapse and survival in AML. *Blood*. 2013;122(1):83-92.
7. Schuurhuis GJ, Heuser M, Freeman S, et al. Minimal/measurable residual disease in AML: a consensus document from the European LeukemiaNet MRD Working Party. *Blood*. 2018;131(12):1275-1291.
8. Dillon R, Hills R, Freeman S, et al. Molecular MRD status and outcome after transplantation in *NPM1*-mutated AML. *Blood*. 2020;135(9):680-688.
9. Miyamoto T, Nagafuji K, Akashi K, et al. Persistence of multipotent progenitors expressing *AML1/ETO* transcripts in long-term remission patients with t(8;21) acute myelogenous leukemia. *Blood*. 1996;87(11):4789-4796.
10. Yin JA, O'Brien MA, Hills RK, Daly SB, Wheatley K, Burnett AK. Minimal residual disease monitoring by quantitative RT-PCR in core binding factor AML allows risk stratification and predicts relapse: results of the United Kingdom MRC AML-15 trial. *Blood*. 2012;120(14):2826-2835.

J.A.K., N.T., K.M.S., A. Tedjaseputra, J.P.R., C.S.G., E.A., J.S., D.K.H., A.B., N.E.P., M.L.S., C.J.H., A. Thomas, and A.F.G. contributed patients or analytical tools, interpreted data, and approved the final version of the manuscript.

Conflict-of-interest disclosure: I.S.T. has served on speaker's bureaus for Amgen and Servier and has acted as a consultant for Pfizer and Servier. R.D. has served on advisory boards for AbbVie, Jazz Pharmaceuticals, MENARINI, Novartis, and Pfizer; has received institutional research funding from AbbVie, Amgen; has served on speaker's bureaus for Astellas and Novartis; and has acted as a consultant for AbbVie, Astellas, Jazz Pharmaceuticals, and Pfizer. C.S.G. has served on the advisory board for AbbVie. N.H.R. has served on advisory boards for Astellas and Pfizer; has received institutional research funding from Jazz Pharmaceuticals and Pfizer; and has served on speaker's bureaus for Jazz Pharmaceuticals and Novartis. A.H.W. has served on advisory boards for Novartis, Janssen, Amgen, Roche, Pfizer, AbbVie, Servier, Celgene - Bristol Myers Squibb, MacroGenics, Agios, and Gilead; has received institutional research funding from Novartis, AbbVie, Servier, Celgene - Bristol Myers Squibb, Astra Zeneca, and Amgen; has served on speaker's bureaus for AbbVie, Novartis, and Bristol Myers Squibb; and has received royalty payments from the Walter and Eliza Hall Institute of Medical Research related to venetoclax. The remaining authors declare no competing financial interests.

ORCID profiles: I.S.T., 0000-0001-7417-4343; R.D., 0000-0001-9333-5296; A. Tedjaseputra, 0000-0001-6224-1940; C.S.G., 0000-0003-2788-9893; E.A., 0000-0003-4211-1553; A. Thomas, 0000-0002-8283-6762; A.H.W., 0000-0002-7514-3298.

Correspondence: Andrew H. Wei, Blood Cells and Blood Cancer, The Walter and Eliza Hall Institute of Medical Research, 1G Royal Parade, Parkville, Victoria 3052, Australia; e-mail: wei.a@wehi.edu.au.

11. Platzbecker U, Middeke JM, Sockel K, et al. Measurable residual disease-guided treatment with azacitidine to prevent haematological relapse in patients with myelodysplastic syndrome and acute myeloid leukaemia (RELAZA2): an open-label, multicentre, phase 2 trial. *Lancet Oncol*. 2018; 19(12):1668-1679.
12. Tiong IS, Dillon R, Ivey A, et al. Venetoclax induces rapid elimination of NPM1 mutant measurable residual disease in combination with low-intensity chemotherapy in acute myeloid leukaemia. *Br J Haematol*. 2021;192(6):1026-1030.
13. Lausen B, Schumacher M. Maximally selected rank statistics. *Biometrics*. 1992;48(1):73-85.