

Martinez-Lopez J, Wong SW, Shah N, et al. Clinical value of measurable residual disease testing for assessing depth, duration, and direction of response in multiple myeloma. *Blood Adv.* 2020;4(14):3295-3301.

The color coding for Figure 2 on page 3299 was incorrect. The corrected Figure 2 is shown below. The error has been corrected in the published article.

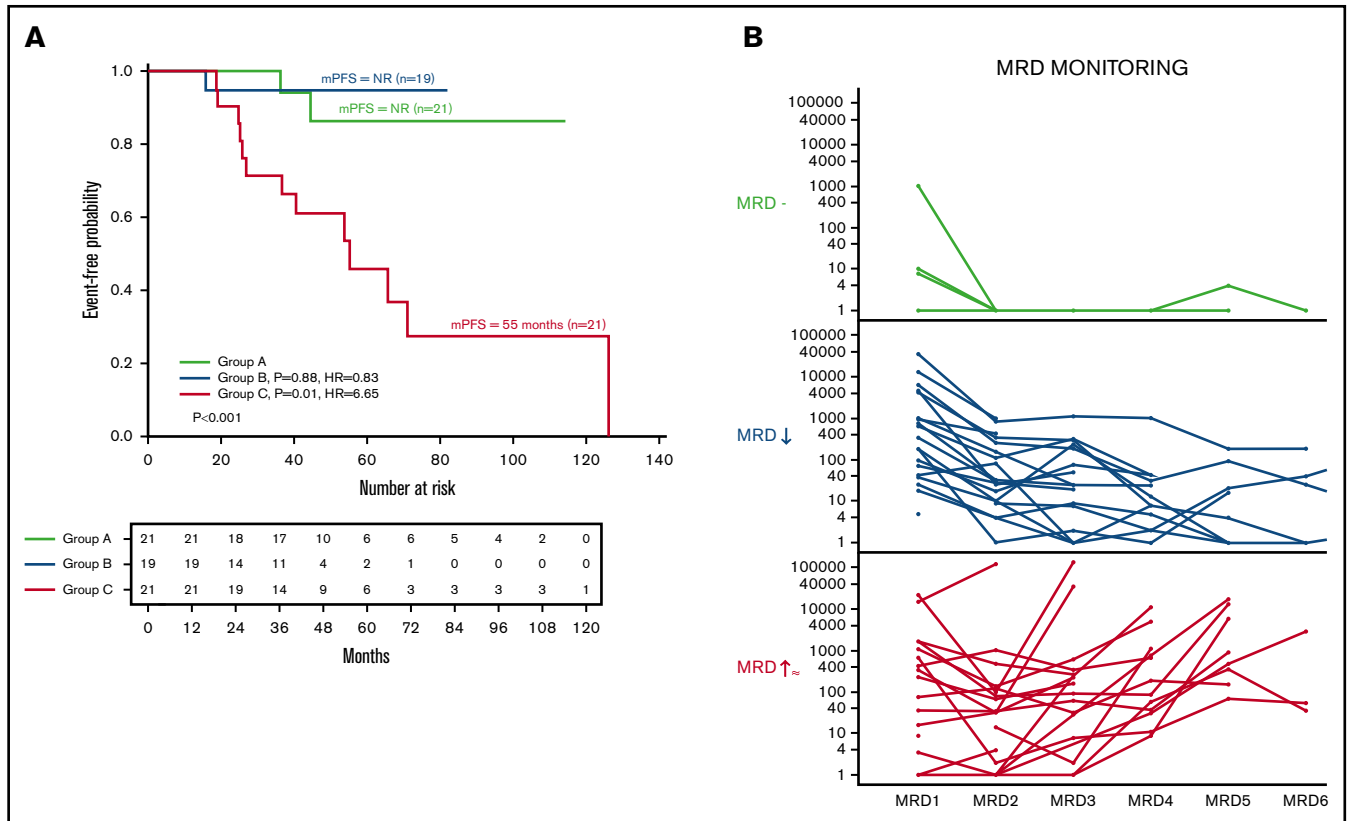


Figure 2. MRD dynamics and its impact on PFS. (A) Kaplan-Meier curves for PFS in patients classified according to dynamics of response: group A, patients with 3 or greater MRD-negative assessments (n = 21); group B, patients with continuously declining detectable clones in success time points (n = 19); and group C, patients with stable number of clones (n = 21). (B) MRD evolution for each individual patient by MRD dynamics.

DOI 10.1182/bloodadvances.2020003234

© 2020 by The American Society of Hematology