

Impact of acquired del(17p) in multiple myeloma

Arjun Lakshman,^{1*} Utkarsh Painuly,^{2*} S. Vincent Rajkumar,¹ Rhett P. Ketterling,³ Prashant Kapoor,¹ Patricia T. Greipp,³ Angela Dispenzieri,¹ Morie A. Gertz,¹ Francis K. Buadi,¹ Martha Q. Lacy,¹ David Dingli,¹ Amie L. Fonder,¹ Suzanne R. Hayman,¹ Miriam A. Hobbs,¹ Wilson I. Gonsalves,¹ Yi Lisa Hwa,¹ Nelson Leung,¹ Ronald S. Go,¹ Yi Lin,¹ Taxiarchis V. Kourelis,¹ Rahma Warsame,¹ John A. Lust,¹ Stephen J. Russell,¹ Steven R. Zeldenrust,¹ Robert A. Kyle,¹ and Shaji K. Kumar¹

¹Division of Hematology, Mayo Clinic, Rochester, MN; ²Fourth Department of Internal Medicine–Hematology, University Hospital Hradec Kralove, Hradec Kralove, Czech Republic; and ³Department of Laboratory Medicine and Pathology, Mayo Clinic, Rochester, MN

Key Points

- Acquisition of del(17p) by fluorescence in situ hybridization is associated with reduced OS in patients with MM.
- High plasma cell proliferative rate predicted reduced OS from detection of del(17p).

The high-risk abnormality del(17p) can be detected by fluorescence in situ hybridization on malignant plasma cells (PCs) and has an adverse prognostic impact in patients with multiple myeloma (MM). Patients with del(17p) have reduced overall survival (OS). Patients who acquire del(17p) later during the disease course are not well described. The disease characteristics at diagnosis predicting for acquired del(17p) and its overall impact on patient survival is not known. We compared 76 patients with MM who were negative for del(17p) at diagnosis and acquired it later with 152 control MM patients who did not acquire del(17p) at a comparable time point. Patients acquired del(17p) at a median of 35.6 months (range, 4.6-116.1 months) from diagnosis of MM after a median of 2 lines of therapy (range, 1-10 lines of therapy). When compared with controls, patients with acquired del(17p) had shorter median progression-free survival (PFS) (30.1 vs 23.0 months; $P = .032$) and OS (106.1 vs 68.2 months; $P < .001$) from diagnosis. After the detection of del(17p), the median PFS was 5.4 months and the median OS was 18.1 months. High lactate dehydrogenase level (odds ratio [OR], 3.69; 95% confidence interval [CI], 1.11-12.24) and presence of t(4;14) (OR, 2.66; 95% CI, 1.09-6.48) or any high-risk translocation (OR, 2.23; 95% CI, 1.00-4.95) at diagnosis predicted acquisition of del(17p). High PC proliferative rate predicted shorter OS from detection of del(17p) (hazard ratio, 2.28; 95% CI, 1.31-3.96; $P = .004$). Our study shows that acquisition of del(17p) is an important molecular event associated with reduction in OS in MM. Certain baseline factors may predict acquisition of del(17p). This needs validation in prospective data sets.

Introduction

Multiple myeloma (MM) is the second most common hematologic malignancy and is expected to cause ~13 000 new cases and 30 000 deaths in 2018.¹ The patients with MM constitute a heterogeneous mixture, and different subpopulations have outcomes driven by well-characterized genetic abnormalities.² del(17p) detected by interphase fluorescence in situ hybridization (FISH) of bone marrow plasma cells (PCs) is a secondary cytogenetic abnormality (acquired later in the course of clonal evolution). Its adverse prognostic impact in patients with MM³ is mainly a result of the loss of *TP53* function.^{4,5}

del(17p) is detected in ~10% patients with newly diagnosed MM (NDMM). The impact of del(17p) in patients with NDMM is clearly defined.^{6,7} Despite improvements in overall survival (OS) in patients with MM as a result of advances in understanding the disease biology and resultant development of

Submitted 10 November 2018; accepted 4 April 2019. DOI 10.1182/bloodadvances.2018028530.

*A.L. and U.P. contributed equally to this study and are joint first authors.

Presented as a poster at the 60th annual meeting of the American Society of Hematology, San Diego, CA, 3 December 2018.

The full-text version of this article contains supplemental data.

© 2019 by The American Society of Hematology

novel therapeutic approaches, MM remains incurable.^{8,9} The median OS in patients who are refractory to first-line therapies, including proteasome inhibitors (PIs) and immunomodulatory drugs (IMiDs), and who are exposed to an alkylating agent is only 13 months.¹⁰ Emergence of new clones with acquisition of new genetic abnormalities and Darwinian selection under pressure of therapy result in high-risk relapsed and/or refractory MM (RRMM).¹¹ By using FISH, del(17p) is detected in about 10% of patients with RRMM.¹²⁻¹⁴ Acquisition of del(17p) on follow-up is probably a rare event, as was recently shown in 2 (~3.8%) of 52 patients who underwent sequential testing at diagnosis and at first relapse.¹⁵ Serial testing has shown that del(17p) is associated with acquisition of *TP53* mutations.¹⁶ The outcomes of patients who acquire del(17p) during follow-up are not known. We aimed to assess the impact of acquired del(17p) on survival and define their outcomes by comparing them with controls who did not acquire del(17p).

Patients and methods

We reviewed the dysproteinemia database at Mayo Clinic (Rochester, MN) to identify 80 patients with MM and acquired del(17p), defined as being negative for del(17p) on the first FISH test and having del(17p) detected on a follow-up FISH test. Of these, 76 patients had RRMM, whereas in 2 patients, del(17p) was detected before stem cell transplant (SCT) after they had attained a response to a previous line of therapy. In 2 other patients, del(17p) was detected during assessment for stem cell harvest after a partial response was attained following induction therapy. After excluding these 4 patients, 76 patients were included in the analysis. All patients had FISH testing between 2004 and August 2016. Fifty-seven patients (75%) had their first FISH test within 6 months of MM diagnosis; 19 patients (25%) had their first FISH test more than 6 months after MM diagnosis. The study was performed with approval of the Mayo Clinic Institutional Review Board and was conducted according to the principles of the Declarations of Helsinki.

del(17p) included interstitial deletion involving the short arm of chromosome 17 (del(17p13.1)) and/or monosomy 17. We identified 2 control patients for each case who were diagnosed during the same time period but did not demonstrate del(17p) at any time during follow-up. The cases and controls were not matched for potential predictors of acquisition of del(17p) including age, cytogenetic abnormalities, or initial treatment. Control patients ($n = 152$) had at least 2 FISH tests negative for del(17p), the second test being at a comparable time point or later relative to timing of detection of del(17p) in the respective case. The second FISH test was performed at relapse. We also compared survival outcomes in the group with acquired del(17p) with a cohort of 310 patients with del(17p) detected at diagnosis [de novo del(17p)].

We defined responses to treatment using the 2016 Revised International Myeloma Working Group Criteria.¹⁷ Progression-free survival (PFS) was defined as the duration between initiation of therapy and progression or death, and OS was defined as the duration from MM diagnosis or detection of del(17p) to death as a result of any cause.¹⁸ Number of lines of therapy were defined according to accepted guidelines.¹⁹ Early SCT was defined as SCT within 1 year of starting treatment for MM.

FISH testing and estimation of PC proliferative rate

Bone marrow aspirate samples enriched for mononuclear cells by the Ficoll method were used for preparing cytospin slides. Cytoplasmic immunoglobulin staining was used to identify PCs, and the FISH analysis was performed at our institution as described previously using the following probes: 3cen (D3Z1), 7cen (D7Z1), 9cen (D9Z1), 15cen (D15Z4), 11q13 (CCND1-XT), 13q14 (RB1), 13q34 (LAMP1), 17p13.1 (p53), 17cen (D17Z1), 14q32 (IGH-XT), 14q32 (3'IGH,5'IGH), 4p16.3 (FGFR3), 16q23 (c-MAF), 6p21 (CCND3), 20q12 (MAFB), 1p32 (TP73), and 1q22 (1Q22).²⁰ The cut points for a positive test were 7% for del(17p13.1) and 9% for monosomy 17. Relative loss of del(17p) was defined as del(17p) with trisomy/tetrasomy involving chromosome 17. High-risk translocations (HRTs) included t(4;14), t(14;16), and t(14;20). Hyperdiploidy was defined as the presence of trisomy and/or tetrasomy of 2 or more odd-numbered chromosomes.

PC proliferative rate was defined as the proportion of clonal PCs actively proliferating in the S-phase of the cell cycle. Slide technique using the deoxyuridine method (called PC labeling index [PCLI]) was used for this until May 2012.²¹ After that, PCLI was supplanted by flow cytometric technique. Briefly, this involves identifying immunophenotypically atypical PCs and estimating their DNA content. By appropriate gating, the proportion of atypical PCs in the S-phase was estimated. The details of the technique are summarized in a recent publication.²² High PC proliferative rate was defined by a PCLI of $\geq 1.5\%$ or a PC S-phase fraction of $\geq 3\%$ in the flow cytometric technique.^{23,24}

Statistical analysis

Categorical variables were summarized as proportions and compared between groups using Fisher's exact test. Continuous variables were summarized as medians and compared between groups using the nonparametric Mann-Whitney *U* test. We estimated PFS and OS using the Kaplan-Meier method, and we used the log-rank test to compare them between groups. We used Cox proportional hazards model to identify factors at detection of del(17p) affecting PFS and OS. Odds ratios (ORs) were calculated to identify factors at MM diagnosis associated with later detection of del(17p) by FISH. A 2-tailed $P < .05$ was considered significant for all statistical tests. We used JMP Pro 14.0 software (SAS Institute Inc., Cary, NC) for statistical analysis.

Results

The characteristics of 76 patients with acquired del(17p) at initial diagnosis of MM, 152 control patients at diagnosis, and the cohort with acquired del(17p) at detection of del(17p) are shown in Table 1. Patients with acquired del(17p) and controls were similar with respect to baseline characteristics and initial treatment, except for relatively low hemoglobin at diagnosis in cases (median, 10.8 g/dL vs 11.3 g/dL; $P = .035$), higher occurrence of t(4;14) among cases (15.8% vs 6.6%; $P = .033$) and higher proportion of patients with elevated lactate dehydrogenase (LDH) among evaluable cases (13.7% [7 of 51] vs 4.1% [5 of 121]; $P = .043$) relative to controls. Details of treatment and response are available in supplemental Tables 1 and 2. The characteristics of the de novo del(17p) group have been published elsewhere.²⁵ Briefly, 47.4% of patients were of age 65 years or older, 36.7% of patients had International Staging System (ISS) stage III disease, 23.8% of patients had elevated LDH, and 24.4% of patients had concurrent

Table 1. Characteristics of patients with acquired del(17p) at MM diagnosis and at detection of del(17p), and control patients at MM diagnosis

Characteristic	No. of patients with available data in the 3 groups	Acquired del(17p) at MM diagnosis (n = 76)	Control group at MM diagnosis (n = 152)	Acquired del(17p) at detection of del(17p) (n = 76)	P* for acquired del(17p) vs controls at MM diagnosis
Age, y					
Median (range)		61.9 (42.4-80.9)	61.4 (28.8-84.7)	65.6 (44.6-82.2)	.972
≥65, n (%)		28 (36.8)	51 (33.5)	39 (51.3)	.659
Female sex, n (%)		30 (39.5)	63 (41.4)	30 (39.5)	.886
Median hemoglobin (range), g/dL	69/150/75	10.8 (5.4-14.5)	11.3 (7.1-16.7)	10.4 (7.2-14.7)	.035
Median calcium (range), mg/dL	60/146/73	9.6 (7.2-15.4)	9.6 (7.9-15)	9.5 (7.1-11.5)	.598
Creatinine > 2 mg/dL, n (%)	64/145/74	8 (12.5)	10 (6.9)	4 (5.4)	.191
Median bone marrow plasma cell percentage (range)	70/150/75	40 (4-93)	50 (3-98)	40 (2-100)	.384
High plasma cell proliferative rate, n (%)	45/106/65	14 (31.1)	22 (20.7)	32 (49.2)	.211
Median percentage of plasma cells with del(17p) (range)	—/—/71	—	—	89 (9-100)	
Median M-protein level (range), g/dL	65/146/74	2.8 (0-12.3)	2.7 (0-6.8)	1.8 (0-6.4)	.999
M-protein isotype, n (%)	76/152/76				
IgG		46 (60.5)	88 (57.9)	46 (60.5)	.097
IgA		21 (27.6)	36 (23.7)	21 (27.6)	
Light chain		5 (6.6)	25 (16.4)	5 (6.6)	
Others		4 (5.3)	3 (2.0)	4 (5.3)	
ISS I/II vs III, n (%)	56/136/56	42 (75.0)/ 14 (25.0)	110 (80.9)/ 26 (19.1)	43 (76.8)/ 13 (23.2)	.434
Increased LDH, n (%)	51/121/61	7 (13.7)	5 (4.1)	21 (33.4)	.043
Cytogenetic abnormalities at MM diagnosis for cases and controls and at acquisition of del (17p), n (%)					
High-risk chromosomal translocation		14 (18.4)	14 (9.2)	14 (18.4)	.055
t(4;14)		12 (15.8)	10 (6.6)	12 (15.8)	.033
t(6;14)†		0 (0)	0 (0)	0 (0)	—
t(11;14)		15 (19.7)	37 (24.3)	15 (19.7)	.505
t(14;16)		2 (2.6)	3 (2.0)	2 (2.6)	1.000
t(14;20)†		0 (0)	1 (1.4)	0 (0)	1.000
Hyperdiploidy (trisomy or tetrasomy involving ≥2 odd-numbered chromosomes)		32 (42.1)	69 (45.4)	41 (53.9)	.673
del(13q) and/or monosomy 13		30 (39.5)	67 (44.1)	45 (59.2)	.570
del(13q)		3 (3.9)	8 (5.3)	5 (6.6)	.756
Monosomy 13		27 (35.5)	59 (38.8)	41 (53.9)	.666
(1q22) gain‡		0 (0)	1 (1.5)	4 (28.6)	1.000
del(1p32)§		0 (0)	0 (0)	0 (0)	—

IgA, immunoglobulin A; IgG, immunoglobulin G.

*P for Mann-Whitney U test for continuous variables and Fisher's exact test for categorical variables.

†Calculation is limited to cases and controls who had FISH testing after May 2009 (n = 37 for cases at diagnosis, n = 69 for controls at diagnosis, and n = 68 for cases at del(17p) detection) when probes for these abnormalities were introduced.

‡Calculation limited to cases and controls who had FISH testing after August 2014 (n = 4 for cases at diagnosis, n = 8 for controls at diagnosis, and n = 14 for cases at del(17p) detection) when probes for 1q gain and del(1p) were introduced.

HRTs. More than 95% patients in this cohort were treated initially with novel agents (PI + IMiD, 38.6%; PI, 32.5%; and IMiD, 25.6%). Fifty-six percent of patients received an SCT at any time during their disease course.

Comparison of survival outcomes

Comparing survival outcomes from initial diagnosis, PFS was 23.0 months (95% CI, 20.2-27.8 months) in the acquired del(17p) group and 30.1 months (95% CI, 26.0-33.9 months) in the control group ($P = .032$). The OS was 68.2 months (95% CI, 50.8-74.8 months) in the acquired del(17p) group and 106.1 months (95% CI, 101.6-119.4 months) in the control group ($P < .001$). The results were also valid in subgroups on the basis of prognostic factors except HRTs (Table 2). PFS in patients with de novo del(17p) was similar (21.2 months; 95% CI, 17.8-23.9 months; $P = .887$), and OS trended toward being shorter (47.3 months; 95% CI, 42.7-55.9 months; $P = .063$) when compared with the acquired del(17p) group. The comparison of PFS and OS for the 3 groups is shown in Figure 1. OS was 18.1 months (95% CI, 11.9-25 months) landmarked from detection of del(17p) for cases and was 56.2 months (95% CI, 44.4-79.7 months) at a corresponding time point for controls ($P < .001$) (supplemental Figure 2; supplemental Table 3).

Characteristics of patients at detection of del(17p)

The median time from diagnosis of MM to detection of del(17p) in the acquired del(17p) cohort was 35.6 months (range, 4.8-116.1 months). Patients had received a median of 2 prior lines of therapy (range, 1-10 prior lines of therapy) before detection of del(17p). del(17p) was detected in a median of 89% (range, 9%-100%) of PCs tested by FISH. Fifty-seven patients (67.1%) were exposed to a PI, and 33 patients (43.4%) were refractory to a PI; 70 patients (92.1%) were exposed to an IMiD, and 57 patients (75.0%) were refractory to an IMiD (majority being lenalidomide and/or pomalidomide); and 60 patients (78.9%) were exposed to an alkylating agent and 25 patients (32.9%) were refractory to an alkylating agent. Thirty patients (39.5%) were PI and IMiD-refractory.

Seventy patients (86.8%) had del(17p)13.1. Five patients (6.6%) had monosomy 17. One patient (1.3%) had both del(17p)13.1 and monosomy 17. Four patients (5.3%) had relative loss of 17p. HRTs were present in 14 patients (18.4%). Compared with initial FISH, the proportion of patients with hyperdiploidy increased at detection of del(17p) (42.1% to 59.2%; $P < .001$). A similar change was seen with monosomy 13 (35.5% to 53.9%; $P < .001$), whereas no change was seen with del(13q) (3.9% and 6.6%; $P = .187$). Even though 4 patients (28.6%) had 1q22 gain at follow-up, none of those patients were tested for it initially, so we cannot determine whether it was newly acquired.

Treatment and survival outcomes after detection of del(17p)

All patients received therapy after detection of del(17p). IMiD-based and PI-based regimens were used in 22 patients (28.9%) each, and a PI + IMiD-based regimen was used in 15 patients (19.7%). Monoclonal antibodies were used in 4 patients (5.3%). Seven patients (9.2%) proceeded directly to SCT without additional therapy, and 6 patients (7.9%) received other therapies. Overall, SCT was part of the next line of treatment in 14 patients (18.4%) (1 of them underwent allogeneic SCT). Details of treatment are

available in supplemental Table 4. Among 67 patients who were evaluable for response, stringent complete response was attained in 3 patients (4.5%), complete response in 3 (4.5%), very good partial response in 16 (23.9%), and partial response in 9 (13.4%), giving an overall response rate of 46.3%. A minimal response was seen in 3 patients (4.5%). Twenty patients (29.8%) showed stable disease, and 13 (19.4%) developed progressive disease. The median PFS from the start of the next line of therapy was 5.4 months (95% CI, 2.7-7.7 months). The median OS from detection of del(17p) was 18.1 months (95% CI, 11.9-25.0 months) (supplemental Figure 1).

Predictors of survival after detection of del(17p)

To identify factors affecting PFS and OS from detection of del(17p), we used age ≥ 65 vs < 65 years, serum creatinine > 2 vs ≤ 2 mg/dL, bone marrow PC percentage ≥ 50 vs < 50 , ISS stage III vs I or II, increased vs normal LDH, presence vs absence of an HRT, presence vs absence of monosomy 13, presence vs absence of hyperdiploidy, high vs low PC proliferative rate, prior PI and IMiD refractoriness, and different cutoffs for proportion of PCs with del(17p) (20%, 30%, 40%, 50%, and 60%) in the Cox proportional hazards model (Table 3). After univariable analysis, ISS stage III disease, high PC proliferative rate, PI and IMiD refractoriness, and presence of del(17p) in $\geq 30\%$, $\geq 40\%$, and $> 50\%$ PCs, had $P < .1$ for predicting shorter PFS and were included in multivariable analysis. Using multivariable Cox proportional model with step-wise backward elimination, the presence of del(17p) in $\geq 40\%$ of PCs predicted shorter PFS with a hazard ratio of 2.21 (95% CI, 1.21-4.01; $P = .009$). In a similar analysis, ISS III stage, increased LDH, high PC proliferative rate, and PI and IMiD refractoriness were included in the multivariable model to determine predictors of shorter OS. A higher PC proliferative rate alone predicted shorter OS with a hazard ratio of 2.28 (95% CI, 1.31-3.96; $P = .004$). The median PFS was 3.5 months (95% CI, 1.9-5.7 months) in patients with del(17p) involving $\geq 40\%$ PCs and 11.3 months (95% CI, 4.4-15.6 months) in those with del(17p) involving $< 40\%$ PCs ($P = .008$) (Figure 2A). The median OS was 8.9 months (95% CI, 4.9-17.1 months) in patients with high PC proliferative rate at detection of del(17p) and 35.6 months (95% CI, 18.2-47.5 months) in those with a low PC proliferative rate ($P = .003$) (Figure 2B).

To identify predictors at diagnosis of acquisition of del(17p), we compared patients with acquired del(17p) with controls in a case-control fashion and calculated OR. High LDH at baseline (OR, 3.69; 95% CI, 1.11-12.24), presence of t(4;14) (OR, 2.66; 95% CI, 1.09-6.48), and presence of any HRT (OR, 2.23; 95% CI, 1.00-4.95) predicted acquisition of del(17p). Age ≥ 65 years, ISS III stage, t(11;14), any trisomy/tetrasomy, hyperdiploidy, monosomy 13, bone marrow PC percentage, initial therapy, and exposure to high-dose melphalan in the first year and before acquiring del(17p) were not predictive (supplemental Table 5).

Discussion

In this retrospective analysis, we compare the outcomes of patients who acquired del(17p) on FISH testing with those who did not acquire del(17p) from diagnosis and show that their survival is shorter. We also show that from acquisition of del(17p), patients have a PFS of 5.4 months and OS of about 18 months. In previous reports of patients with RRMM treated with bortezomib-based and lenalidomide-based regimens, the median PFS for patients with

Table 2. Subgroup analysis for OS from diagnosis in patients with acquired del(17p) and controls based on prognostic factors at diagnosis and therapy

Subgroup	No. of patients with available data in the subgroups	Acquired del(17p) (n = 76)	Controls (n = 152)	P*
Age, y				
<65	48 vs 101	72.3 (49.6-99.0)	106.1 (98.5-127.8)	.002
≥65	28 vs 51	58.2 (44.1-71.3)	105.9 (68.6-138.8)	<.001
Translocation				
High risk	14 vs 14	56.8 (24.0-119.0)	98.3 (60.5-111.8)	.419
No high risk	62 vs 138	68.9 (50.8-74.8)	111.7 (103.4-129.3)	<.001
ISS				
I/II	42 vs 110	71.3 (50.8-75.4)	106.1 (101.6-129.3)	<.001
III	14 vs 26	44.4 (13.8-103.1)	104.8 (60.7-111.8)	.036
LDH				
Low	44 vs 116	63.8 (44.6-99.0)	105.9 (98.5-119.4)	.004
High	7 vs 5	55.5 (23.2-86.4)	100.9 (80.6-NR)	.011
PC proliferative rate				
Low	31 vs 84	74.6 (58.3-99.0)	106.1 (98.3-137.8)	.025
High	14 vs 24	42.2 (24.0-103.1)	103.4 (67.1-NR)	.031
PI-containing induction	21 vs 37	34.5 (24.0-50.8)	104.8 (70.2-137.8)	<.001
Others	55 vs 115	74.6 (63.8-96.5)	106.1 (98.5-127.8)	.003

NR, not reached.
*P for log-rank test for Kaplan-Meier analysis.

del(17p) was 3.4 to 5 months.^{26,27} In a phase 3 trial of carfilzomib or bortezomib with dexamethasone, the PFS in the 2 groups were 7.6 and 4.9 months, respectively.²⁸ The median OS in a clinical trial of patients with RRMM treated with a bortezomib-based regimen was 11.5 months, which is shorter than the OS from detection of

del(17p) in our patients.²⁶ These results underlie the poor prognosis in this subset of patients with RRMM. However, it is difficult to ascertain what proportion of patients in the above trials had a del(17p) at diagnosis of MM as opposed to new detection of del(17p) at relapse. Interestingly, in a recent trial of ixazomib or

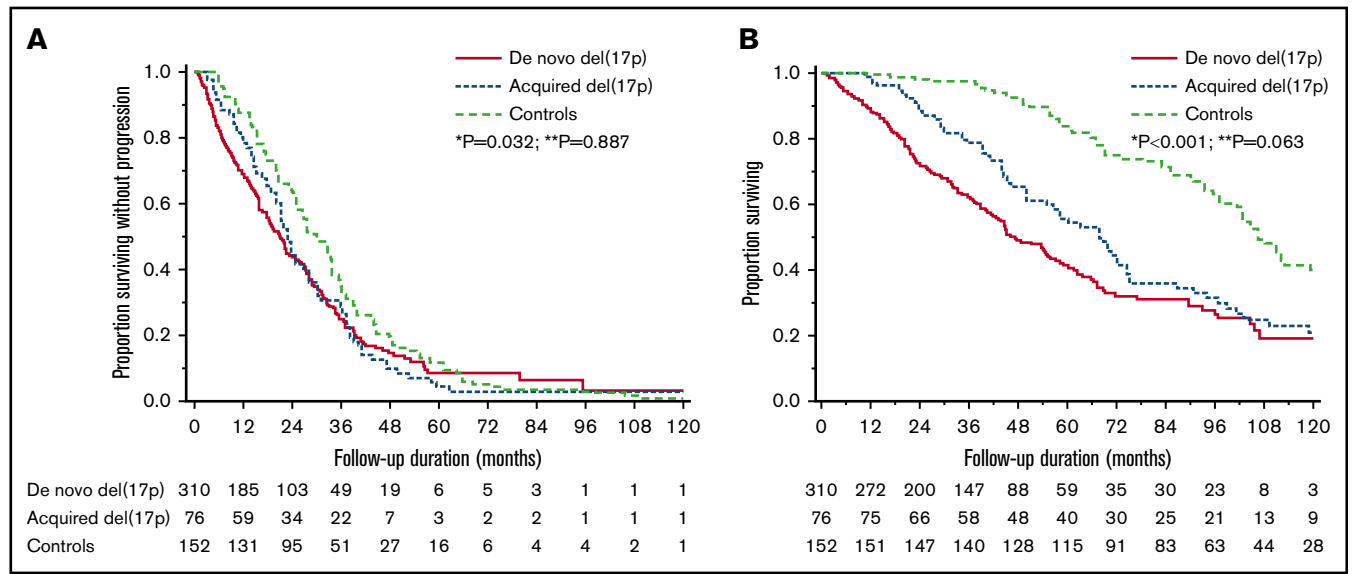


Figure 1. Survival outcomes in patients with de novo del(17p), acquired del(17p), and controls. (A) Comparison of PFS in the 3 groups: 21.2 months (95% CI, 17.8-23.9) vs 23.0 months (95% CI, 20.2-27.8) vs 30.1 months (95% CI, 26.0-33.9). *P = .032 for acquired del(17p) vs controls; **P = .887 for acquired del(17p) vs de novo del(17p). (B) Comparison of OS from diagnosis in the 3 groups: 47.3 months (95% CI, 42.7-55.9) vs 68.2 months (95% CI, 50.8-74.8) vs 106.1 months (95% CI, 101.6-119.4). *P < .001 for acquired del(17p) vs controls; **P = .063 for acquired del(17p) vs de novo del(17p).

Table 3. Effect of characteristics at detection of del(17p) on survival measures in patients with acquired del(17p) (n = 76)

Independent variable	No. of patients with available data in the subgroups	PFS			OS		
		P for univariable analysis	HR (95% CI) for multivariable analysis	P for multivariable analysis	P for univariable analysis	HR (95% CI) for multivariable analysis	P for multivariable analysis
Age ≥ 65 vs < 65, y	39 vs 37	.157	NI	—	.147	NI	—
Serum creatinine > 2 vs ≤ 2 mg/dL	4 vs 74	.311	NI	—	.846	NI	—
Bone marrow PCs ≥ 50%	37 vs 38	.512	NI	—	.651	NI	—
ISS III vs I/II	13 vs 43	.090	1.62 (0.78-3.35)	.193	.047	1.60 (0.79-3.25)	.189
Increased vs normal LDH	21 vs 41	.839	NI	—	.056	1.29 (0.59-2.82)	.530
High-risk vs no high-risk translocation	14 vs 62	.868	NI	—	.873	NI	—
Monosomy 13 vs no monosomy 13	41 vs 35	.374	NI	—	.730	NI	—
HRD vs no HRD	41 vs 35	.531	NI	—	.957	NI	—
High vs low PC proliferative rate	32 vs 33	.036	1.58 (0.83-2.69)	.093	.004	2.28 (1.31-3.96)	.004
PI and IMiD refractory vs not refractory	30 vs 46	.080	1.05 (0.54-2.05)	.883	.015	1.39 (0.70-2.74)	.347
Percentage of PCs with del(17p)							
≥ 20 vs < 20	66 vs 5	.277	NI	—	.686	NI	—
≥ 30 vs < 30	59 vs 12	.032	1.53 (0.67-3.52)	.312	.490	NI	—
≥ 40 vs < 40	53 vs 18	.009	2.21 (1.21-4.01)	.009	.589	NI	—
≥ 50 vs < 50	50 vs 21	.009	1.57 (0.80-3.10)	.193	.445	NI	—
≥ 60 vs < 60	49 vs 22	.009	1.57 (0.80-3.10)	.193	.566	NI	—

All variables with a $P < .1$ in univariable analysis were included in the multivariable model. The final multivariable model included 49 patients for PFS and OS in whom the parameters were available. HR, hazard ratio; HRD, hyperdiploidy; NI, not included in analysis.

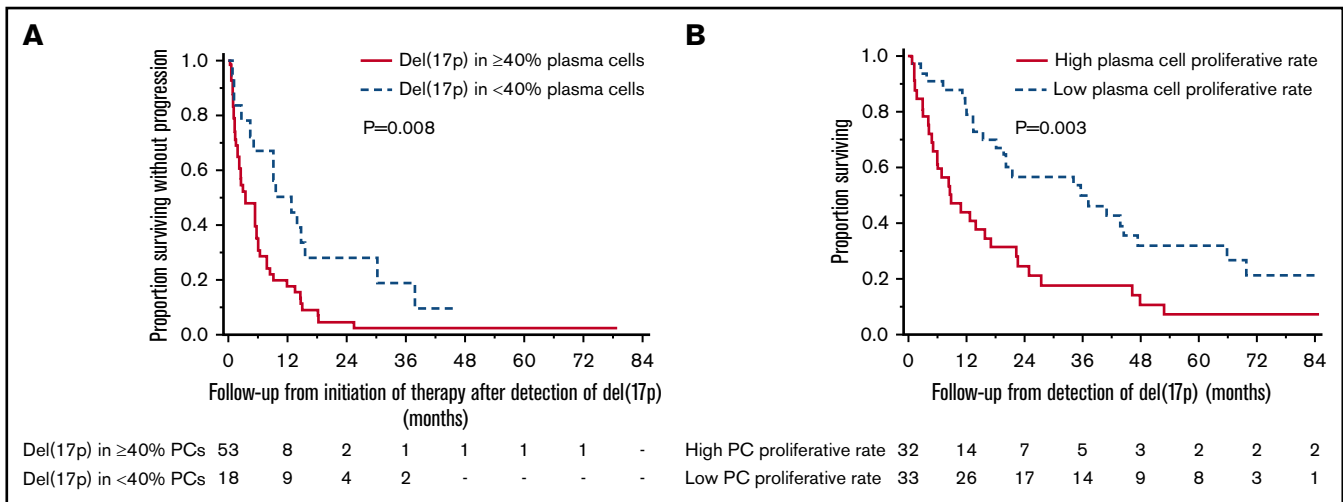


Figure 2. Prognostic factors for PFS and OS after acquisition of del(17p). Presence of $\geq 40\%$ plasma cells (PCs) with del(17p) predicted shorter PFS, and high PC proliferative rate predicted shorter OS. (A) The median PFS in patients with del(17p) involving $\geq 40\%$ PCs was 3.5 months (95% CI, 1.9-5.7) and in those with $< 40\%$ PCs, it was 11.3 months (95% CI, 4.4-15.6) ($P = .008$). (B) The median OS from detection of del(17p) was 8.9 months (95% CI, 4.9-17.1) among those with high PC proliferation rate and was 35.6 months (95% CI, 18.2- 47.5) among those with low PC proliferation rate ($P = .003$).

placebo, with lenalidomide and dexamethasone (IRd vs Rd), among RRMM patients with del(17p), PFS in the IRd and Rd arms were 21.4 and 9.7 months, respectively, the PFS in patients with del(17p) being similar to those with standard-risk cytogenetics.²⁹ These results were in patients with del(17p) defined using a cutoff of $\geq 5\%$ PCs with del(17p). When using cutoffs of 20% and 60%, PFS of 21.4 vs 6.7 months and 15.7 vs 5.1 months, respectively, were observed in the 2 groups. In our series, using cutoffs from 20% to 60%, PFS ranged from 5.3 to 3.5 months, suggesting progressively decreasing PFS with increase in the size of the PC clone. A cutoff of 40% predicted shorter PFS in multivariable analysis. However, the size of the PC clone with del(17p) was not a predictor of OS. This is similar to the results we observed in a series of patients with de novo del(17p).²⁵

High PC proliferative rate at the detection of del(17p) predicted shorter OS. PC proliferative rate is a prognostic factor in patients with PC disorders, including MM and light chain amyloidosis.³⁰⁻³³ PC proliferative rate detects cells in S-phase and is a marker of active DNA synthesis by malignant PCs. The presence of high PC proliferative rate may be a marker of additional deregulation of cell cycle control in patients with del(17p).

A high LDH at diagnosis and the presence of HRTs, especially t(4;14), had a high OR for the acquisition of del(17p) on follow-up. A previous sequential analysis of patients showed that the presence of HRTs at baseline is associated with detection of more copy number abnormalities on follow-up, and this was postulated to be a result of higher genomic instability in these patients.³⁴ High LDH at baseline may be a marker of aggressive tumor biology. In addition, the use of high-dose melphalan with autologous SCT was not associated with acquisition of del(17p). This is contrary to a previous report that associated high-dose melphalan and autologous SCT with acquisition of high-risk abnormalities, including del(17p), at relapse.³⁵ However, the risk factors we identified were present at baseline in only a few patients in the acquired del(17p) and control groups. We tested 14 potential baseline predictors for acquisition of del(17p). Because this was a retrospective analysis, we did not

correct the significance level for P values for multiple comparisons. Our results are hypothesis generating and need confirmation in larger prospective data sets such as CoMMpass.³⁶

Our study is limited by the retrospective nature of the patient data we studied. Prognostic variables at baseline, especially LDH, were not available in all patients. Because the patients were not enrolled in a prospectively designed study, they were not tested at specific time intervals with FISH or at every relapse. Because the study involved patients with acquired del(17p) detected over a long time period, there is considerable heterogeneity in their prior lines of therapy and their subsequent treatments, which represents the changing landscape of treatment of MM. Our use of controls who had a second FISH test with negative del(17p) is likely to select patients who lived long enough because of the inherent good prognosis of their disease; hence, they impart an immortality bias to our study. However, given that we are matching them for time to the positive (cases) or negative (controls) FISH, this does minimize the influence on the subsequent outcome. It is possible that the control group had other currently unknown prosurvival characteristics that allowed them to be alive at the time the FISH test was performed, which may not be present in the cases. However, given the retrospective nature of our data and the absence of FISH testing at regular intervals, this is the best we could do to demonstrate the difference. Furthermore, it is possible that a proportion of patients with acquired del(17p) harbored subclones with del(17p) at diagnosis. This would be hard to ascertain by FISH analysis, given the way in which a positive abnormality is defined in FISH testing (>3 standard deviations above the mean for polyclonal PCs and myeloid cells from normal bone marrow from donors) and would need advanced techniques such as DNA amplification or next-generation sequencing (NGS).³⁷ Subclonal deletion of TP53 detected by multiplex ligation probe amplification has been shown to predict poor prognosis in NDMM.³⁸ This may explain why the median OS of the acquired del(17p) and de novo del(17p) groups tended to be similar and would have to be confirmed in a prospective data set of uniformly treated patients. Finally, recent

studies show that combining FISH analysis with NGS identifies patients with biallelic inactivation of TP53 at diagnosis and relapse who have a poor prognosis.³⁹⁻⁴¹ We did not perform NGS on bone marrow PC samples at detection of del(17p) to enable this stratification.

In conclusion, our data show that patients with acquisition of del(17p) on follow-up is associated with marked reduction in OS when compared with patients who do not acquire del(17p) and provides estimates for expected outcomes in patients who acquire del(17p). These data will be important when we design clinical trials for this group of patients with acquired high-risk disease. The presence of HRTs detected by FISH testing and high LDH at baseline predicted acquisition of del(17p). The association with high LDH, HRTs, and shorter PFS in first-line therapy may suggest that patients who acquire del(17p) have an aggressive biology, even at diagnosis.

Acknowledgment

This study was supported by the National Institutes of Health, National Cancer Institute grant NCI CA186781.

Authorship

Contribution: A.L. and U.P. collected and analyzed the data, wrote the first draft, and approved the final version of the manuscript; S.V.R., P.K., A.D., M.A.G., F.K.B., M.Q.L., D.D., A.L.F., S.R.H., M.A.H., W.I.G., Y.L.H., N.L., R.S.G., Y.L., T.V.K., R.W., J.A.L., S.J.R., and S.R.Z. managed patients, revised the manuscript critically, and approved the final version of the manuscript; R.P.K. and P.T.G. performed FISH testing, revised the manuscript critically, and approved the final version of the manuscript; R.A.K. performed patient follow-up, revised

the manuscript critically, participated in final data analysis, and approval of the final version of the manuscript; and S.K.K. designed the study, analyzed the data, wrote the first draft, approved the final version of the manuscript, and performed patient management.

Conflict-of-interest disclosure: P.K. received research funding from Takeda Pharmaceuticals, Celgene, and Amgen. A.D. received research funding from Celgene, Millennium Pharmaceuticals, Pfizer, and Janssen and received a travel grant from Pfizer. M.A.G. served as a consultant for Millennium Pharmaceuticals and received honoraria from Celgene, Millennium Pharmaceuticals, Onyx Pharmaceuticals, Novartis, GlaxoSmithKline, Prothena, Ionis Pharmaceuticals, and Amgen. M.Q.L. received research funding from Celgene. N.L. serves on an advisory board for Takeda Pharmaceuticals. S.K.K. served as a consultant for Celgene, Millennium Pharmaceuticals, Onyx Pharmaceuticals, Janssen, and Bristol-Myers Squibb and received research funding from Celgene, Millennium Pharmaceuticals, Novartis, Onyx Pharmaceuticals, AbbVie, Janssen, and Bristol-Myers Squibb. The remaining authors declare no competing financial interests.

ORCID profiles: A.L., 0000-0001-8915-2382; S.V.R., 0000-0002-5862-1833; A.D., 0000-0001-8780-9512; M.A.G., 0000-0002-3853-5196; F.K.B., 0000-0003-3214-0203; M.Q.L., 0000-0003-1193-1559; N.L., 0000-0002-5651-1411; R.W., 0000-0003-0240-0326; S.J.R., 0000-0002-0799-6432; S.K.K., 0000-0001-5392-9284.

Correspondence: Shaji K. Kumar, Division of Hematology, Mayo Clinic, 200 First St SW, Rochester, MN 55905; e-mail: kumar.shaji@mayo.edu.

References

1. Siegel RL, Miller KD, Jemal A. Cancer statistics, 2018. *CA Cancer J Clin*. 2018;68(1):7-30.
2. Kumar SK, Rajkumar SV. The multiple myelomas - current concepts in cytogenetic classification and therapy. *Nat Rev Clin Oncol*. 2018;15(7):409-421.
3. Kumar SK, Rajkumar V, Kyle RA, et al. Multiple myeloma. *Nat Rev Dis Primers*. 2017;3(1):17046.
4. Lodé L, Eveillard M, Trichet V, et al. Mutations in TP53 are exclusively associated with del(17p) in multiple myeloma. *Haematologica*. 2010;95(11):1973-1976.
5. Teoh PJ, Chung TH, Sebastian S, et al. p53 haploinsufficiency and functional abnormalities in multiple myeloma. *Leukemia*. 2014;28(10):2066-2074.
6. Avet-Loiseau H, Attal M, Moreau P, et al. Genetic abnormalities and survival in multiple myeloma: the experience of the Intergroupe Francophone du Myélome. *Blood*. 2007;109(8):3489-3495.
7. Avet-Loiseau H, Attal M, Campion L, et al. Long-term analysis of the IFM 99 trials for myeloma: cytogenetic abnormalities [t(4;14), del(17p), 1q gains] play a major role in defining long-term survival. *J Clin Oncol*. 2012;30(16):1949-1952.
8. Kumar SK, Rajkumar SV, Dispenzieri A, et al. Improved survival in multiple myeloma and the impact of novel therapies. *Blood*. 2008;111(5):2516-2520.
9. Ravi P, Kumar SK, Cerhan JR, et al. Defining cure in multiple myeloma: a comparative study of outcomes of young individuals with myeloma and curable hematologic malignancies. *Blood Cancer J*. 2018;8(3):26.
10. Kumar SK, Dimopoulos MA, Kastritis E, et al. Natural history of relapsed myeloma, refractory to immunomodulatory drugs and proteasome inhibitors: a multicenter IMWG study. *Leukemia*. 2017;31(11):2443-2448.
11. Pawlyn C, Morgan GJ. Evolutionary biology of high-risk multiple myeloma. *Nat Rev Cancer*. 2017;17(9):543-556.
12. Avet-Loiseau H, Li JY, Godon C, et al. P53 deletion is not a frequent event in multiple myeloma. *Br J Haematol*. 1999;106(3):717-719.
13. Smith D, Stephenson C, Percy L, et al. Cohort analysis of FISH testing of CD138(+) cells in relapsed multiple myeloma: implications for prognosis and choice of therapy. *Br J Haematol*. 2015;171(5):881-883.
14. Schultheis B, Krämer A, Willer A, Hegenbart U, Goldschmidt H, Hehlmann R. Analysis of p73 and p53 gene deletions in multiple myeloma. *Leukemia*. 1999;13(12):2099-2103.
15. Corre J, Cleynen A, Robiou du Pont S, et al. Multiple myeloma clonal evolution in homogeneously treated patients. *Leukemia*. 2018;32(12):2636-2647.

16. Chin M, Sive JI, Allen C, et al. Prevalence and timing of TP53 mutations in del(17p) myeloma and effect on survival. *Blood Cancer J.* 2017;7(9):e610.
17. Kumar S, Paiva B, Anderson KC, et al. International Myeloma Working Group consensus criteria for response and minimal residual disease assessment in multiple myeloma. *Lancet Oncol.* 2016;17(8):e328-e346.
18. Rajkumar SV, Harousseau JL, Durie B, et al; International Myeloma Workshop Consensus Panel 1. Consensus recommendations for the uniform reporting of clinical trials: report of the International Myeloma Workshop Consensus Panel 1. *Blood.* 2011;117(18):4691-4695.
19. Rajkumar SV, Richardson P, San Miguel JF. Guidelines for determination of the number of prior lines of therapy in multiple myeloma. *Blood.* 2015;126(7):921-922.
20. Fonseca R, Blood E, Rue M, et al. Clinical and biologic implications of recurrent genomic aberrations in myeloma. *Blood.* 2003;101(11):4569-4575.
21. Kumar S, Rajkumar SV, Greipp PR, Witzig TE. Cell proliferation of myeloma plasma cells: comparison of the blood and marrow compartments. *Am J Hematol.* 2004;77(1):7-11.
22. Aljama MA, Sidiqi MH, Lakshman A, et al. Plasma cell proliferative index is an independent predictor of progression in smoldering multiple myeloma. *Blood Adv.* 2018;2(22):3149-3154.
23. Garcia-Sanz R, González-Fraile MI, Mateo G, et al. Proliferative activity of plasma cells is the most relevant prognostic factor in elderly multiple myeloma patients. *Int J Cancer.* 2004;112(5):884-889.
24. Morice WG, Hanson CA, Kumar S, Frederick LA, Lesnick CE, Greipp PR. Novel multi-parameter flow cytometry sensitively detects phenotypically distinct plasma cell subsets in plasma cell proliferative disorders. *Leukemia.* 2007;21(9):2043-2046.
25. Lakshman A, Painuly U, Rajkumar SV, et al. Natural history of multiple myeloma with de novo del(17p). *Blood Cancer J.* 2019;9(3):32.
26. Chang H, Trieu Y, Qi X, Jiang NN, Xu W, Reece D. Impact of cytogenetics in patients with relapsed or refractory multiple myeloma treated with bortezomib: Adverse effect of 1q21 gains. *Leuk Res.* 2011;35(1):95-98.
27. Chen MH, Qi CX, Saha MN, Chang H. p53 nuclear expression correlates with hemizygous TP53 deletion and predicts an adverse outcome for patients with relapsed/refractory multiple myeloma treated with lenalidomide. *Am J Clin Pathol.* 2012;137(2):208-212.
28. Dimopoulos MA, Moreau P, Palumbo A, et al; ENDEAVOR Investigators. Carfilzomib and dexamethasone versus bortezomib and dexamethasone for patients with relapsed or refractory multiple myeloma (ENDEAVOR): a randomised, phase 3, open-label, multicentre study. *Lancet Oncol.* 2016;17(1):27-38.
29. Avet-Loiseau H, Bahlis NJ, Chng WJ, et al. Ixazomib significantly prolongs progression-free survival in high-risk relapsed/refractory myeloma patients. *Blood.* 2017;130(24):2610-2618.
30. Greipp PR, Lust JA, O'Fallon WM, Katzmann JA, Witzig TE, Kyle RA. Plasma cell labeling index and beta 2-microglobulin predict survival independent of thymidine kinase and C-reactive protein in multiple myeloma. *Blood.* 1993;81(12):3382-3387.
31. San Miguel JF, Garcia-Sanz R, González M, et al. A new staging system for multiple myeloma based on the number of S-phase plasma cells. *Blood.* 1995;85(2):448-455.
32. Steensma DP, Gertz MA, Greipp PR, et al. A high bone marrow plasma cell labeling index in stable plateau-phase multiple myeloma is a marker for early disease progression and death. *Blood.* 2001;97(8):2522.
33. Sidiqi MH, Aljama MA, Jevremovic D, et al. Plasma cell proliferative index predicts outcome in immunoglobulin light chain amyloidosis treated with stem cell transplantation. *Haematologica.* 2018;103(7):1229-1234.
34. Keats JJ, Chesi M, Egan JB, et al. Clonal competition with alternating dominance in multiple myeloma. *Blood.* 2012;120(5):1067-1076.
35. Merz M, Jauch A, Hielscher T, et al. Longitudinal fluorescence *in situ* hybridization reveals cytogenetic evolution in myeloma relapsing after autologous transplantation. *Haematologica.* 2017;102(8):1432-1438.
36. Keats JJ, Craig DW, Liang W, et al. Interim analysis of the MMRF CoMMpass Trial, a longitudinal study in multiple myeloma relating clinical outcomes to genomic and immunophenotypic profiles [abstract]. *Blood.* 2013;122(21). Abstract 532.
37. Ross FM, Avet-Loiseau H, Ameye G, et al; European Myeloma Network. Report from the European Myeloma Network on interphase FISH in multiple myeloma and related disorders. *Haematologica.* 2012;97(8):1272-1277.
38. Shah V, Johnson DC, Sherborne AL, et al; National Cancer Research Institute Haematology Clinical Studies Group. Subclonal TP53 copy number is associated with prognosis in multiple myeloma. *Blood.* 2018;132(23):2465-2469.
39. Chavan SS, He J, Tytarenko R, et al. Bi-allelic inactivation is more prevalent at relapse in multiple myeloma, identifying RB1 as an independent prognostic marker. *Blood Cancer J.* 2017;7(2):e535.
40. Thanendrarajan S, Tian E, Qu P, et al. The level of deletion 17p and bi-allelic inactivation of TP53 has a significant impact on clinical outcome in multiple myeloma. *Haematologica.* 2017;102(9):e364-e367.
41. Walker BA, Mavrommatis K, Wardell CP, et al. A high-risk, double-hit, group of newly diagnosed myeloma identified by genomic analysis. *Leukemia.* 2019;33(1):159-170.