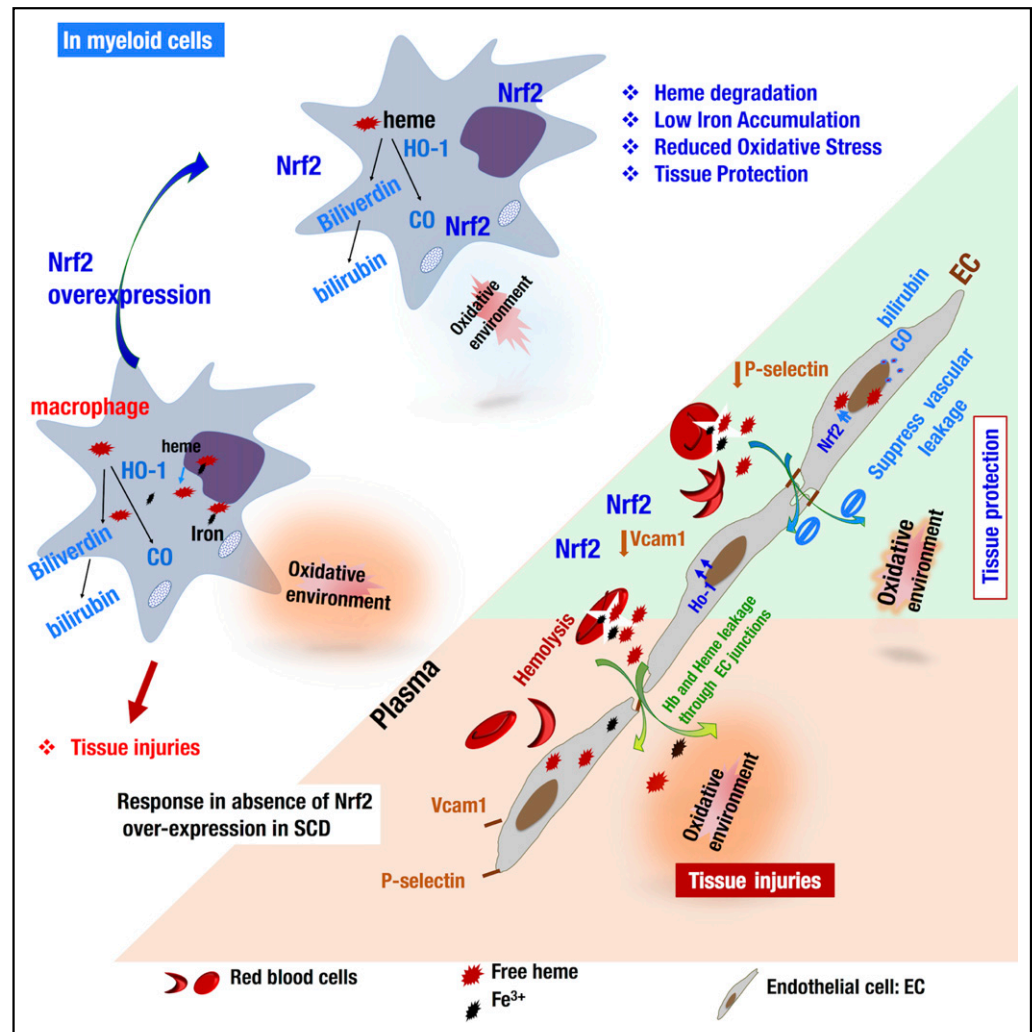


Keleku-Lukwete N, Suzuki M, Panda H, et al. Nrf2 activation in myeloid cells and endothelial cells differentially mitigates sickle cell disease pathology in mice. *Blood Adv.* 2019;3(8):1285-1297.

In Figure 6 on page 1294 of the 23 April 2019 issue and in the article's visual abstract, there are errors in the depiction of the HO-1 enzymatic reaction. The errors have been corrected in the original article. The corrected Figure 6, which is also the visual abstract, is shown below.



Downloaded from <http://ashpublications.net/bloodadvances/article-pdf/3/1/1701/1631898/advancesadv2019000461.pdf> by guest on 02 June 2024

DOI 10.1182/bloodadvances.2019000461

© 2019 by The American Society of Hematology