



American Society of Hematology
 2021 L Street NW, Suite 900,
 Washington, DC 20036
 Phone: 202-776-0544 | Fax 202-776-0545
 editorial@hematology.org

CD19-CD28: An affinity-optimized CD28 agonist for combination with glofitamab (CD20-TCB) as off-the-shelf immunotherapy

Tracking no: BLD-2023-023381R1

Johannes Sam (Roche Innovation Center Zürich, Switzerland) Thomas Hofer (Roche Innovation Center Zürich, Switzerland) Christine Kuettel (Roche Innovation Center Zürich, Switzerland) Christina Claus (Roche Innovation Center Zurich, Switzerland) Jenny Thom (Roche Innovation Center Zürich, Switzerland) Sylvia Herter (Roche Glycart AG, Switzerland) Guy Georges (Roche Innovation Center Munich, Germany) Koorosh Korfi (Roche Glycart AG, Switzerland) Martin Lechmann (Roche Innovation Center Munich, Germany) Miro Eigenmann (Roche Innovation Center Basel, Switzerland) Daniel Marbach (Roche Innovation Center Basel, Switzerland) Candice Jamois (F. Hoffmann-La Roche Ltd., Switzerland) Katharina Lechner (F. Hoffmann-La Roche Ltd, Germany) Sreenath Krishnan (Roche Innovation Center Basel, Switzerland) Brenda Gaillard (Roche Innovation Center Zürich, Switzerland) Joana Marinho (Roche Innovation Center Zürich, Switzerland) Sven Kronenberg (Roche Innovation Center Basel, Switzerland) Leo Kunz (Roche Innovation Center Zürich, Switzerland) Sabine Wilson (Roche Innovation Center Welwyn, United Kingdom) Stefanie Briner (Roche Innovation Center Zürich, Switzerland) Samuel Gebhardt (Roche Innovation Center Zürich, Switzerland) Ahmet Varol (Roche Innovation Center Zürich, Switzerland) Birte Appelt (Roche Innovation Center Zürich, Switzerland) Valeria Nicolini (Roche Innovation Center Zürich, Switzerland) Dario Speziale (Roche Innovation Center Zürich, Switzerland) Miriam Bez (Roche Innovation Center Zurich, Switzerland) Esther Bommer (Roche Innovation Center Zürich, Switzerland) Jan Eckmann (Roche, Germany) Carina Hage (Roche Innovation Center Munich, Germany) Florian Limani (Roche,) Silvia Jenni (Roche, Switzerland) Anne Schoenle (Roche Pharma Research & Early Development, Switzerland) Marine Le Clech (Roche Innovation Center Zürich, Switzerland) Jean-Baptiste Vallier (Roche Innovation Center Zürich, Switzerland) Sara Colombetti (Roche,) Marina Bacac (Roche Pharma Research and Early Development, Switzerland) Stephan Gasser (Roche Innovation Center Zürich, Switzerland) Christian Klein (Roche Glycart AG, Switzerland) Pablo Umaña (Roche Innovation Center Zurich, Switzerland)

Abstract:

Effective T cell responses not only require the engagement of T cell receptors (TCRs, "signal 1"), but also the availability of costimulatory signals ("signal 2"). T cell bispecific antibodies (TCBs) deliver a robust signal 1 by engaging the TCR signaling component CD3 ϵ , while simultaneously binding to tumor antigens. The CD20-TCB glofitamab redirects T cells to CD20-expressing malignant B cells. While glofitamab exhibits strong single agent efficacy, adding costimulatory signaling may enhance the depth and durability of T cell-mediated tumor cell killing. We developed a bispecific CD19-targeted CD28 agonist (RG6333, CD19-CD28) to enhance the efficacy of glofitamab and similar TCBs by delivering signal 2 to tumor-infiltrating T cells. CD19-CD28 distinguishes itself from the superagonistic antibody TGN1412, as its activity requires the simultaneous presence of a TCR signal and CD19 target binding. This is achieved through its engineered format incorporating a mutated Fc region with abolished Fc γ R and Clq binding, CD28 monovalency, and a moderate CD28 binding affinity. In combination with glofitamab, CD19-CD28 strongly increased T cell effector functions in ex vivo assays using lymphoma patient-derived PBMC and spleen samples, and enhanced glofitamab-mediated regression of aggressive lymphomas in humanized mice. Notably, the triple combination of glofitamab with CD19-CD28 with the costimulatory 4-1BB agonist CD19-4-1BBL, offered substantially improved long-term tumor control over glofitamab monotherapy and respective duplet combinations. Our findings highlight CD19-CD28 as a safe and highly efficacious off-the-shelf combination partner for glofitamab, similar TCBs, and other costimulatory agonists. CD19-CD28 is currently in a Phase 1 clinical trial in combination with glofitamab.

Conflict of interest: COI declared - see note

COI notes: J.S., T.H., C.Ku., C.C., S.H., G.G., K.K., M.L., M.J.E., D.M. C.J., K.L., S.M.K., B.G., J.M., S.K., L.K., S.W., S.B., S.G., A.V., B.A., V.N., D.S., M.B., E.B., J.E., C.H., F.L., S.J., A.S., M.L.C., S.C., M.B., S.G., C.Kl., and P.U are employees of Roche and hold ownership of Roche stocks and patents. The remaining authors, J.T. and J.B.P.V, declare no conflict of interest.

Preprint server: No;

Author contributions and disclosures: C.Kl. and P.U. contributed to the concepts and idea. J.S., C.Kl., P.U., M.B., S.G., S.C. contributed to the design of all in vitro and in vivo experiments. T.H., G.G., contributed to and coordinated antibody design and engineering. S.K. designed and coordinated in vivo and in vitro safety assessment. M.L., M.J.E. designed and coordinated preclinical in vivo pharmacodynamic analyses and in silico prediction analysis. C.J., S.M.K. designed and analyses the clinical pharmacodynamics analysis J.T., S.H., C.C., C.Ku., J.B.P.V., J.M., B.G. designed, coordinated, and performed in vitro assays and analyzed, discussed, and interpreted the results. D.M. analyzed preclinical RNA sequencing data J.S., E.B., B.A., A.S., M.L.C., V.N., F.L., L.K. D.S., S.B., S.G., A.H., M.B., J.E., C.H., S.J. designed, coordinated, and performed in vivo and ex vivo experiments and analyzed, discussed, and interpreted the results. K.K. and S.W. designed and analyzed the clinical biomarker data. K.L. designed and coordinated clinical trial J.S. and J.T. wrote the manuscript. All authors reviewed and edited the manuscript.

Non-author contributions and disclosures: No;

Agreement to Share Publication-Related Data and Data Sharing Statement: More detailed information on methodologies and protocols upon request to corresponding author. RNAsequencing raw data is currently uploaded to GEO (<https://www.ncbi.nlm.nih.gov/geo/>) and will be available soon.

Clinical trial registration information (if any): Study number: NCT05219513 (Cytokine data and PK data from patients) To be found here: clinicaltrials.gov

CD19-CD28: An affinity-optimized CD28 agonist for combination with glofitamab (CD20-TCB) as off-the-shelf immunotherapy

CD19-CD28 as off-the-shelf combination partner

Authors and affiliations

Johannes Sam¹, Thomas Hofer¹, Christine Kuettel¹, Christina Claus¹, Jenny Thom¹, Sylvia Herter¹, Guy Georges², Koorosh Korfi¹, Martin Lechmann², Miro Julian Eigenmann³, Daniel Marbach³, Candice Jamois³, Katharina Lechner², Sreenath M Krishnan³, Brenda Gaillard¹, Joana Marinho¹, Sven Kronenberg³, Leo Kunz¹, Sabine Wilson³, Stefanie Briner¹, Samuel Gebhardt¹, Ahmet Varol¹, Birte Appelt¹, Valeria Nicolini¹, Dario Speziale¹, Miriam Bez¹, Esther Bommer¹, Jan Eckmann², Carina Hage², Florian Limani¹, Silvia Jenni¹, Anne Schoenle¹, Marine Le Clech¹, Jean-Baptiste Pierre Vallier¹, Sara Colombetti¹, Marina Bacac¹, Stephan Gasser¹, Christian Klein¹ and Pablo Umaña¹

¹Roche Innovation Center Zurich, Roche Pharma Research and Early Development (pRED), Wagistrasse 10, 8952 Schlieren, Switzerland

²Roche Innovation Center Munich, Roche Pharma Research and Early Development (pRED), Nonnenwald 2, 82377 Penzberg, Germany

³Roche Innovation Center Basel, Roche Pharma Research and Early Development (pRED), Grenzacherstrasse 124, 4070 Basel, Switzerland

Corresponding author

Johannes Sam

Wagistrasse 10

Schlieren, Switzerland 8952

johannes.sam@roche.com

Data sharing statement

For original data, please contact johannes.sam@roche.com. More detailed information on methodologies and protocols upon request to corresponding author. RNAsequencing raw data is currently uploaded to GEO (<https://www.ncbi.nlm.nih.gov/geo/>) at accession number GSE260674.

Text word count <i>4000 words max. counting introduction, methods, results, discussion</i>	Potentially needs to be shortened
Abstract word count <i>250 words max.</i>	249
Number of Figures and Tables <i>7 max.</i>	6 Figures, 0 Tables
Number of references <i>100 max.</i>	33
Scientific category <i>Blood options listed here</i>	Immunobiology and Immunotherapy

Key Points

1. CD19-CD28 provides effective CD28 costimulation to glofitamab-activated T cells without superagonistic properties.
2. Triple combination with CD19-4-1BBL further prolongs antitumor responses.

Abstract

Effective T cell responses not only require the engagement of T cell receptors (TCRs, “signal 1”), but also the availability of costimulatory signals (“signal 2”). T cell bispecific antibodies (TCBs) deliver a robust signal 1 by engaging the TCR signaling component CD3 ϵ , while simultaneously binding to tumor antigens. The CD20-TCB glofitamab redirects T cells to CD20-expressing malignant B cells. While glofitamab exhibits strong single agent efficacy, adding costimulatory signaling may enhance the depth and durability of T cell-mediated tumor cell killing. We developed a bispecific CD19-targeted CD28 agonist (RG6333, CD19-CD28) to enhance the efficacy of glofitamab and similar TCBs by delivering signal 2 to tumor-infiltrating T cells. CD19-CD28 distinguishes itself from the superagonistic antibody TGN1412, as its activity requires the simultaneous presence of a TCR signal and CD19 target binding. This is achieved through its engineered format incorporating a mutated Fc region with abolished Fc γ R and C1q binding, CD28 monovalency, and a moderate CD28 binding affinity. In combination with glofitamab, CD19-CD28 strongly increased T cell effector functions in *ex vivo* assays using lymphoma patient-derived PBMC and spleen samples, and enhanced glofitamab-mediated regression of aggressive lymphomas in humanized mice. Notably, the triple combination of glofitamab with CD19-CD28 with the costimulatory 4-1BB agonist CD19-4-1BBL, offered substantially improved long-term tumor control over glofitamab monotherapy and respective duplet combinations. Our findings highlight CD19-CD28 as a safe and highly efficacious off-the-shelf combination partner for glofitamab, similar TCBs, and other costimulatory agonists. CD19-CD28 is currently in a Phase 1 clinical trial in combination with glofitamab. Study number: NCT05219513 (Cytokine data and PK data from patients)

Introduction

T cells are crucial for antitumor immune responses due to their ability to recognize and eliminate cancer cells.^{1,2} The T cell receptor (TCR)-CD3 complex is key in this process, binding to specific antigens on target cells and transmitting activation signals through its associated CD3 γ , δ , ϵ , and ζ domains. This antigen-dependent signal, termed “signal 1”, establishes the foundation of T cell activation and expansion. However, full T cell functionality requires a second signal, “signal 2”, provided by costimulatory receptors like CD28, which is abundantly expressed on naïve and antigen-experienced T cells, including tumor-infiltrating lymphocytes.³⁻⁶ Ligation of CD28 is strictly required for T cell priming, clonal expansion, cytokine production, target cell lysis, and the establishment of durable T cell memory.³ In natural T cell responses, TCR stimulation without costimulation eventually leads to T cell unresponsiveness.³

Synthetic redirection of T cells to destroy tumor cells has been used in cancer immunotherapy,^{2,7} with promising approaches including tumor-targeted T cell bispecific antibodies (TCBs) and chimeric antigen receptor-modified T cells (CAR-T cells). TCBs bind to tumor antigens and simultaneously activate T cells via CD3 engagement. CAR-T cells are patient-derived T cells genetically engineered to express an extracellular tumor antigen binding domain coupled to an intracellular signaling domain that activates TCR and costimulatory signaling pathways.⁸ In cases of B cell Non-Hodgkin’s Lymphoma (B NHL), TCBs have shown strong anti-tumor efficacy.⁹⁻¹² Glofitamab, a CD20-targeted TCB engaging T cells via CD3 ϵ , was recently approved by both FDA and EMA for treating relapsed/refractory diffuse large B cell lymphoma (r/r DLBCL), after 39% of patients achieved a complete response in an open-label, multicenter, single-arm study.¹³ These observations with T-cell bispecific (TCB) antibodies show some similarities to the outcomes seen with second-generation CAR-T cells, which incorporate both signal 1 and signal 2 within their chimeric antigen receptor (CAR) designs. However, the production of CAR-T cells involves a complex three-week manufacturing process, requiring specific infrastructure, which limits availability and delays treatment onset, thus presenting a significant challenge for patients battling a highly aggressive disease.

We hypothesized that a tumor-targeted CD28 agonistic antibody, designed to provide signal 2 as off-the-shelf combination partner to TCBs, including glofitamab, could further enhance glofitamab’s efficacy. However, efforts to harness CD28 signaling require caution, since the first-in-human trial with the CD28 agonistic antibody TGN1412 resulted in a life-threatening cytokine release syndrome in six healthy volunteers.¹⁴ In this trial, TGN1412 caused systemic T cell activation in consequence of its signal-1-independent activity, a phenomenon termed superagonism.

Here, we report the generation and evaluation of a CD19-targeted CD28 agonist, which offers costimulation exclusively in the presence of signal 1 and amplifies glofitamab’s efficacy. Further, humanized mouse models emerged as an adequate approach for exploratory CD28 safety assessment and human dose prediction. These models guided dosing and scheduling in an ongoing phase 1 clinical trial, which assesses the safety, tolerability, pharmacokinetics, and efficacy of CD19-CD28 in combination with glofitamab in patients with r/r NHL (NCT05219513).

Methods

Detailed methods are available in the supplemental data on the *Blood* website.

Design and production of monovalent CD28 antibody derivatives and CD19-CD28 bi-specific antibodies

Key amino acids of the TGN1412 antibody (murine binder 5.11A) were replaced to prevent degradation and reduce affinity. Several VH and VL variants were designed. Mutations were introduced to the constant region of the human IgG1 heavy chains to prevent binding to Fcγ receptors and C1q. Monovalent CD28 antibodies and bi-specific CD19-CD28 antibodies were generated with specific mutations to prevent mispairing of heavy and light chains and produced by transient transfection of Expi293F cells. More details can be found in the supplemental methods.

***In vitro* binding of CD19-CD28 to human CD19 and CD28**

Binding of CD19-CD28 to human CD28 was evaluated using Chinese hamster ovary (CHO-kl) cells genetically modified to overexpress human CD28. To monitor non-specific binding interactions, a DP47 IgG, germline antibody without specificity, was included as negative control. Binding was measured by flow cytometry. A detailed protocol can be found in the supplemental methods.

***In vitro* activity of CD19-CD28 in Jurkat IL-2 promoter reporter cells**

Jurkat IL-2 promoter reporter cells were incubated with NALM-6 target cells alongside increasing concentrations of CD19-CD28 and a suboptimal dose of glotitamab. IL-2 promoter activation was assessed by measuring luciferase activity in a Tecan Spark 10M, as described in the supplemental methods.

Ability of CD19-CD28 to activate human PBMCs

PBMCs were isolated from buffy coats and stimulated with the indicated compounds in round-bottom 96-well plates at 37°C. After 48 h, cytokine release was measured using the Bio-Plex Pro Human Cytokine 17-plex or 8-plex kit (Bio-Rad). After 72 h, T cell activation markers were assessed via flow cytometry, as described in the supplemental methods.

***Ex vivo* characterization of CD19-CD28 using samples from lymphoma patients**

DLBCL PBMC samples were purchased from Discovery Life Sciences. A spleen sample from a B cell lymphoma patient was purchased from iSpecimen. PBMCs were depleted of B cells using CD20 microbeads (Miltenyi Biotech) and stimulated with the indicated. Splenocytes were stimulated with glotitamab alone or in combination with CD19-CD28 and/or CD19-4-1BBL. Supernatants were harvested and cytokine levels were measured using a Cytokine Bead Array (BD Biosciences), according

to the manufacturer's instructions. Sample and assay preparation are described in detail in the supplemental methods.

***In vivo* mouse models**

Three to four week-old female NOD.Cg-Prkdc^{scid}IL2rg^{tm1Wjl}/SzJ (NSG) mice were humanized via human stem cell engraftment as described in the supplementary methods. In some cases, humanized BRGS-CD47 mice were directly purchased from Jackson laboratory.

For xenograft models in humanized mice, NALM-6, WSU-DLCL2 or OCI-Ly18 cells were injected subcutaneously (s.c.) into the right flank of mice and tumor volume was assessed by caliper measurement. For *in vivo* efficacy assessment in disseminated WSU-DLCL2-Fluc model, mice received cell injection intravenously (i.v.) and tumor burden was measured via bioluminescence imaging as described in the supplementary methods.

Mice were randomized and treatments were injected i.v. in histidine buffer.

Single dose pharmacokinetic (PK) study in human FcRn Tg32 mice

Pharmacokinetic properties of the CD19-CD28 agonist were assessed at indicated timepoints in human FcRn Tg32 upon a single intravenous injection. Serum samples were analyzed for quantification of CD19-CD28 using a CD19-binding competent ELISA assay as described in more detail in the supplemental methods.

RNA sequencing and analysis of tumor tissues

AZENTA Life Sciences performed RNA sequencing of tumor tissue. RNA extraction, sequencing protocols and differential gene expression analysis was performed are described in the supplemental methods.

Confocal imaging and 3D image processing

70 µm sections of fixed tumor samples were stained with the indicated antibodies (see supplemental methods). Images were captured using a Leica SP8 inverted confocal microscope and a 40x lens, with a resolution of 512x512 pixels and a z-spacing of 1.5 µm. Image quantification was performed in Imaris 9.6 (Bitplane). Neighborhood analysis for cluster identification is described in the supplemental methods.

***In silico* modeling and translation of non-human PK for dose range projection**

A MATLAB Simbiology 2020b *in silico* model was developed to simulate receptor occupancy and trimeric complex formation (i.e.; synapse formation between cancer target cells and immune cells) across various CD19-CD28 concentrations using the respective target binding affinities.

The generated efficacy data in humanized mice was compared with the *in silico* predicted bell-shape. With that, two pharmacodynamic (PD) thresholds were derived from the study and scaled to human: the minimal pharmacologically active dose (mPAD) and an EC_{max}, which correspond to the lowest effective dose and the dose leading to maximum tumor growth inhibition, respectively.

Human equivalent doses were defined using allometric scaling of PK parameters from hFcRn tg32 mice. The predicted human PK was used to define the doses expected to lead to the mPAD and EC_{max}, and to predict the expected human PK after various doses. The clinical PK observed in patients was compared with the preclinical predictions to evaluate its accuracy.

Plasma cytokine assessment and PK measurement in patients enrolled in the phase 1 clinical trial of glofitamab in combination with CD19-CD28 (NCT05219513)

Patient plasma samples were analyzed at protocol-specified timepoints using validated multiplex immunoassays on a ProteinSimple Ella platform. Concentrations of binding competent CD19-CD28 in human serum samples were determined using a fully validated ELISA method as described in supplemental methods.

Experiments involving animal models, as presented in this manuscript, were conducted following strict ethical guidelines in the AAALAC-accredited animal facility of the Roche Innovation Center Zurich. The experimental design and procedures were thoroughly reviewed and approved by the internal Institutional Animal Care and Use Committee (IACUC). This approval process ensured that all efforts were made to minimize animal suffering. The number of animals used was kept to the minimum necessary to achieve valid results. All animal housing, care, and experimental procedures were in compliance with the guidelines set by GV-Solas, Felasa, and TierschG. As part of a multicenter international clinical trial (NCT05219513), patients have signed informed consent and ethics committees and health authorities of respective sites/countries have approved the study.

Results

Blood guidelines: maximum 7 figures

Design and functional evaluation of an affinity-optimized CD19-targeted CD28 agonist

We aimed to create CD19-CD28 bispecific antibodies with optimized properties (Figure 1A). Published evidence indicates that high affinities for CD3 can restrict the tumor distribution of T cell bispecific antibodies, due to their sequestration in T-cell-rich tissues.¹⁵ CD28 is abundantly expressed on T cells in in blood and lymphoid organs, which could represent a considerable sink for CD28-targeted antibodies. To address this concern, we generated 31 CD28 antigen binding domains starting from TeGenero's TGN1412 binding moiety by introducing point mutations into the complementarity determining regions, aiming to reduce CD28 affinity. Further, we removed potential sources of protein instability, including unpaired cysteines, asparagine deamination sites, and tryptophane residues from the original sequence, as these might compromise structural *in vivo* integrity. *In vitro* binding assays led to the selection of 6 candidates for functional *in vitro* characterization in a tumor-targeted format (Supplemental Figure 1A-D).

From these experiments, we identified 3 candidates: a low-affinity variant (CD28_{LOW}, with a dissociation constant [K_d] of 36 nM), an intermediate affinity variant (CD28_{MED}, K_d = 10 nM), and the original high-affinity TGN1412 (CD28_{HIGH}, K_d = 1 nM), which was optimized for stability by removal of an unpaired cysteine (Figure 1A). These were converted into bispecific monovalent 1+1 heterodimeric CD19-CD28 bispecific antibodies. Both, CD28_{LOW} and CD28_{MED} showed reduced CD28 (Figure 1B) but comparable CD19 binding (Supplemental Figure 1E). All variants activated Jurkat IL-2 promoter reporter cells in a dose-dependent manner when combined with glofitamab in the presence of CD19-expressing NALM-6 lymphoma cells (Figure 1C).

Next, we examined the biodistribution of the 3 untargeted CD28 variants in humanized NSG mice, that display functional human T cells, to see if reduced CD28 affinity would lessen drug sequestration in T-cell-rich areas (Figure 1D). Indeed, drug binding to T cells in both blood and spleens was most pronounced with the CD28_{HIGH} binder, followed by CD28_{MED} and CD28_{LOW} (Figure 1E-F), indicating that lower CD28 affinity reduces peripheral sequestration. Consequently, we excluded CD28_{HIGH} from further analyses.

We evaluated if the remaining CD28 variants could enhance glofitamab-mediated anti-tumor response in humanized NSG mice bearing subcutaneous NALM-6 lymphomas (Figure 1G). While both variants showed a combination effect, the CD28_{LOW} proved significantly more effective (Figure 1H) and led to superior intratumoral CD8⁺ T cell infiltration compared to CD19-CD28_{MED} (Figure 1I).

In conclusion, CD19- CD28_{LOW}, in combination with glofitamab, showed comparable *in vitro* potency to higher affinity variants, superior *in vivo* efficacy, and minimal peripheral T cell binding. Thus, CD19-CD28_{LOW}, now referred to as CD19-CD28, was selected for further evaluation.

CD19-CD28 is not superagonistic and relies on signal I

Previous studies linked TGN1412's superagonistic activity to CD28 binding bivalency and Fc γ RIIb-cross-linking, presumably allowing TGN1412 to create linear CD28 arrays, resulting in aggregated signaling components sufficient to surpass the threshold for T cell activation.¹⁶⁻¹⁸ Therefore, we compared the monotherapeutic activity of CD19-CD28 and TGN1412 to induce cytokine secretion and immune cell activation (Figure 2). *In vitro*, only TGN1412 triggered a dose-dependent cytokine release in healthy-donor-derived PBMCs (Figure 2A). In humanized NSG mice, TGN1412 elicited a robust cytokine response, peaking at 4 hours (Figure 2B-C), but no cytokine release was detected with CD19-CD28. As humanized NSG mice maintain substantial levels of murine Fc receptors in non-hematopoietic cells, we also included a superagonistic anti-human CD28 mouse IgG1 antibody capable of interacting with murine Fc receptors. Nonetheless, we observed no discernable difference in cytokine responses compared to the native TGN1412 IgG4 (Figure 2C). By day 6, animals receiving TGN1412 (hulgG4 or mulgG1) both displayed marked activation of T cells, including regulatory T cells (T_{regs}), in both spleens and thymuses (Supplemental Figure 2). In contrast, no cytokine release was detected in humanized NSG mice when treated with CD19-CD28 (Figure 2C). CD19-CD28 only induced a dose-dependent upregulation of T cell activation markers and pro-inflammatory cytokines in human PBMCs when combined with glofitamab (Figure 2D and Supplemental Figure 3). From these results, we inferred that CD19-CD28 is not superagonistic. Instead, it offers genuine costimulation dependent on binding to CD19 and on the presence of signal 1. Furthermore, we addressed the impact of CD19 expression on our bispecific antibody's activity. Our *in vitro* studies (Supplemental Figure 10) show that T-cell activation by our CD19-CD28 bispecific agonist correlates with CD19 expression levels, yet effective T-cell activation is achieved even at reduced CD19 levels. The concentration threshold at which CD19-CD28 begins to activate T-cells remains consistent. This underscores the robustness of the agonist's potency, affirming that the initial concentration required for activity is stable across different levels of target expression.

CD19-CD28 boosts the efficacy of glofitamab in a dose-dependent manner *in vivo* and enhances its activity on patient-derived T cells

We next explored the potency of CD19-CD28 in more challenging scenarios, including assays with patient-derived T cells and aggressive *in vivo* lymphoma mouse models. In a disseminated DLBCL WSU-DLCL2-Fluc tumor model in humanized mice (Figure 3A), the combination of glofitamab and CD19-CD28 achieved complete tumor regression (Figure 3B), with significantly superior efficacy compared to glofitamab monotherapy at 17 and 20 days post tumor cell injection (Figure 3C). By study day 10, animals receiving either vehicle or only CD19-CD28 began to exhibit weight loss attributed to tumor progression (Figure 3D). Mice treated with glofitamab, either alone or in combination with CD19-CD28, initially lost weight, which is associated with the mode of action of TCB and their induced cytokine release.¹⁰ Mice in these groups subsequently recovered, with no additional weight loss indicative of tumor progression, suggesting robust anti-tumor activity and supports the BLI data (Figure 3D). Distinguishing early weight loss attributable to cytokine release from later weight decline associated with tumor advancement is critical. In the same *in vivo* model, using different doses of

CD19-CD28, we observed a bell-shaped dose response for CD19-CD28, and an optimal efficacious dose range of 0.1-1 mg/kg in mice. The bioluminescence (BLI) data, generated 3 days after first CD19-CD28 injection, from this dose escalation experiment has been successfully overlaid with an *in silico* model for trimeric complex formation. The good agreement of model and observed data further supports the proposed optimal dose range window (Figure 3E). The preclinical PK was translated to patients based on allometric scaling from human FcRn Tg32 mice. The projected PK was overlaid with clinically observed PK data and shows a good agreement between the projected and observed clinical PK overall. This overlay also provides guidance in terms of how well the PK is matching the predicted efficacy thresholds derived based on the preclinical prediction for trimeric complex formation (max. bell-shape) and observed PD readouts (mPAD and EC_{max}) from the humanized mouse study (Figure 3F).

Further, we evaluated the responsiveness of patient-derived T cells to CD19-CD28 *ex vivo* and found that CD19-CD28 in combination with glofitamab, but not in its absence, enhanced granzyme B and IFN γ secretion in PBMC-derived T cells of 2 DLBCL patients (Figure 3G). Collectively, these findings highlight the potential of CD19-CD28 to enhance the therapeutic efficacy of T cell engagers including glofitamab.

CD19-CD28 increases pro-inflammatory T cell signatures in tumors and facilitates transendothelial migration

Glofitamab monotherapy and its combination with CD19-CD28 promote tumor T cell infiltration (Supplemental Figure 4C and 5B). However, combination treatment increased intratumoral CD8⁺ and CD4⁺ T cell counts compared to glofitamab alone by day 8 after therapy onset (study day 25) in WSU-DLCL2-bearing humanized NSG mice (Supplemental Figure 4). Intriguingly, the combination treatment shifted the intratumoral CD8⁺/T_{reg} ratio in favor of CD8⁺ T cells, suggesting the induction of a highly inflammatory tumor milieu (Supplemental Figure 4D). In subcutaneous OCI-Ly18 tumors we confirmed that both glofitamab and the combination with CD19-CD28 increased tumor infiltration of CD28-expressing T cells (Supplemental Figure 5A-D). In this model, the addition of CD19-CD28 to glofitamab led to a marked increase in IFN γ pathway genes, followed by significantly increased cytotoxic T cell and decreased B cell signatures, compared to glofitamab monotherapy (Figure 4B and Supplemental Figure 5E). Furthermore, while glofitamab increased the overall ICAM1-expression in tumors, the addition of CD19-CD28 skewed ICAM1-expression towards endothelial cells, suggesting that CD19-CD28 might promote transendothelial T cell migration (Figure 4C-D). A neighborhood analysis in 20 μ m radius regions of the tumor tissue indicated a trend in spatial association between endothelial and CD8⁺ T cells, which is observed more often in the combination treatment (Supplemental Figure 5F-H).

These findings suggests that CD19-CD28 enhances the antitumor efficacy of glofitamab by amplifying tumor T cell infiltration and pro-inflammatory cytokine profiles at early stages, and promoting cytotoxic T cell signatures at subsequent stages of antitumor T cell responses.

Triple combination of glofitamab with CD19-CD28 and CD19-4-1BBL deepens and prolongs antitumor responses *in vivo*

Research in 3rd generation CAR-T cell therapies suggests that combining CD28 and 4-1BB signaling achieves more robust and durable antitumor responses than each costimulatory signals on its own.¹⁹ To explore whether the same principle can be transferred to bispecific antibody approaches, we evaluated the ability of glofitamab in double and triple combinations with CD19-CD28 and the previously described costimulatory molecule CD19-4-1BBL²⁰ to activate patient-derived T cells and prolong antitumor responses in established tumors in humanized mice (Figure 5). The combination of glofitamab and CD19-CD28 induced the expression of 4-1BB in human PBMC-derived T cells (Figure 5A), indicating that CD19-CD28 may amplify T cell responsiveness to CD19-4-1BBL stimulation. In line with this, the triple combination revealed highest levels of granzyme B, IFN γ , IL-8, and IL-2 in splenic T cells from a DLBCL patient (Figure 5B). *In vivo*, combining glofitamab with either CD19-CD28 or CD19-4-1BBL showed a prolongation of the anti-tumor activity over glofitamab monotherapy in OCI-Ly18 tumors. Yet, these dual combinations eventually only resulted in a delay of tumor growth for most animals (Figure 5D). However, as seen in two independent *in vivo* experiments, the triple combination of glofitamab with CD19-CD28 and CD19-4-1BBL consistently led to long term tumor control (Figure 5E and Supplemental Figure 6). This was especially evident in animals treated first with glofitamab and CD19-CD28, followed by glofitamab and CD19-4-1BBL. This outcome underscores the significance of determining the most effective sequence at which costimulatory signals are introduced.

In summary, our data highlight the potential of bispecific antibody therapies to evoke more robust and durable antitumor responses when leveraging multiple costimulatory signals.

Humanized mouse models are adequate for exploratory safety evaluation and dose finding

The life-threatening cytokine release syndrome in the first-in-human trial with TGN1412 occurred although the initial drug dosage was 500 times below the presumed safe dose established in cynomolgus monkey studies.^{21,22} Subsequent research highlighted differences in CD28 expression on cynomolgus monkey versus human T cells as a potential explanation why no toxicity had been observed in prior toxicology studies.²³⁻²⁶

In light of these findings, we evaluated the predictivity of cynomolgus monkey studies for safety assessment of CD19-CD28. *In vitro*, we directly compared the responsiveness of isolated T cells from 4 cynomolgus monkeys to those from 4 humans to CD19-CD28. Unlike their human counterparts, T cells from cynomolgus monkeys remained unresponsive to the combined stimulation with CD19-CD28 and glofitamab (Supplemental Figure 7). Our data further confirm that CD28 expression in cynomolgus T cells is lower than in human T cells (Supplemental Figure 8A-B). This difference is particularly pronounced in specific T cell subsets, including CD4⁺ effector T cells (T_{eff}), T_{EM} and terminally differentiated effector T cells (T_{EMRA}) (Supplemental Figure 8C-D). Notably, these subsets have been identified as the primary contributors to the TGN1412-mediated cytokine release.²³⁻²⁶

Conversely, T cells isolated from spleens of humanized NSG mice exhibited responses to CD19-CD28 and glofitamab that were comparable to their human counterparts *in vitro* (Supplemental Figure 9). Specifically, the minimal concentration of CD19-CD28 required to produce an additive effect to glofitamab was consistent between the different human T cell sources, suggesting humanized mice as suitable model for human dose predictions. Importantly, the control bispecific antibody DP47-CD28 showed no detectable activity in T cells from either species, indicating that the observed effects are dependent on targeted crosslinking.

Pretreatment with obinutuzumab (Gpt) followed by sequential administration of glofitamab and CD19-CD28 mitigates cytokine release

When the combination treatment was administered simultaneously to tumor-free mice, we observed a robust peripheral cytokine response accompanied by rapid weight loss in all animals, which led to premature termination of this group (Figure 6B-C). In contrast, while the sequential combination with a 3-day interval between glofitamab and CD19-CD28 did reduce the severity of peripheral cytokine release, a pronounced body weight loss was still evident in these mice. However, pre-treatment with Gpt prior to the sequential administration effectively mitigated severe weight loss (Figure 6C), cytokine release (Figure 6B), and peripheral T cell activation (Figure 6D-I).

Furthermore, we assessed the influence of Gpt on tumor growth inhibition and pharmacodynamic (PD) effects within the tumor in a separate *in vivo* study. While Gpt did not demonstrate a potent anti-tumor response, it did lead to an increase of intratumoral T cell frequency (Supplemental Figure 11). These findings are in line with previously published data.¹⁰

These findings further guided the scheduling in the ongoing phase 1 clinical trial of glofitamab in combination with CD19-CD28 in patients with r/r NHL (NCT05219513). In line with the pre-clinical findings, Gpt followed by the step-up dosing of glofitamab and the sequential administration of CD19-CD28 a week later, mitigated systemic cytokine release as measured by changes in the concentration of pro-inflammatory cytokines in plasma at the end of first CD19-CD28 infusion (Figure 6J). These observations were in line with the clinically observed safety profile of the combination (data not shown) and demonstrates the translatability of the pre-clinical models.

Discussion

This study introduces CD19-CD28, a novel CD19-targeted CD28 agonistic bispecific antibody, delivering safe and strictly signal-1-dependent costimulation to T cells for immunotherapy of hematological malignancies. In humanized NSG mouse models with aggressive lymphomas, CD19-CD28 amplified the efficacy of glofitamab, a CD20-targeted CD3 T cell engager recently approved by both the FDA and EMA for the treatment of r/r DLBCL.

Therapeutic exploration of CD28 agonism has been approached with caution due to severe toxicity observed in a first-in-human trial with the CD28 superagonist TGN1412.¹⁴ In CD19-CD28, monovalent CD28 binding and a PGLALA mutated Fc region prevent superagonism. In the present study, monotherapeutic CD19-CD28 remained inactive in both *in vivo* and *in vitro* scenarios where TGN1412 induced substantial cytokine release and T cell activation.

Follow-up studies of the TGN1412 trial have shown that the calculations of a safe starting dose for humans based on pre-clinical testing in cynomolgus monkeys was flawed by discrepancies in CD28 expression levels in cynomolgus monkey and human T cells.²⁶ We found that, unlike their human counterparts, cynomolgus monkey PBMCs did not respond to CD19-CD28 *in vitro*. Conversely, humanized NSG mice exhibited profound cytokine responses to TGN1412 and responded to CD19-CD28 only when combined with glofitamab. Although not considered feasible for long-term toxicological studies, humanized NSG mice can be highly informative for assessing early pharmacodynamic and acute safety events related to human lymphocytes, such as T cells, as witnessed with TGN1412. Corroborating this notion, human dose predictions and scheduling based on humanized mouse models and human FcRn Tg32 mice have proven accurate for CD19-CD28, and no serum cytokine release has occurred upon first infusion of CD19-CD28 in the ongoing phase 1 clinical trial in patients with r/r NHL (NCT05219513). Interestingly, another study describing a MUC16-CD28 bispecific antibody found a dose-dependent response in cynomolgus monkey T cells in combination with a MUC16-specific T cell engager.²⁷ Further, a CD22-CD28 bispecific antibody described by Wei et al., 2022, showed limited activity and no toxicity *in vivo*, but augmented T cell activation when combined with odronextamab, a CD20-CD3 bispecific TCB in primate studies.²⁸ These findings indicate that additional factors, like distinct affinities to CD28 or the nature of the signal 1 provider, may influence the predictivity of a preclinical model to anticipate the clinical safety of CD28 agonistic antibodies.

The evident success of next-generation CAR-T technology underscores the importance of integrating costimulatory signaling in therapeutic approaches based on T cell redirection.²⁹⁻³¹ Prior studies support the idea that this principle applies to bispecific antibody approaches, as well: adding a tumor-specific-antigen (TSA)xCD28 antibody to TSAxCD3 antibodies enhanced the (artificial) immune synapse and significantly improved antitumor activity of T cells.²⁷ Further, tumor-targeted 4-1BBL fusion proteins effectively activated T cells and supported TCB-mediated tumor regression in mouse models.²⁰ Consistent with these findings, our study reaffirms the advantages of introducing costimulatory signaling to bispecific antibody approaches.

Research on 3rd generation CAR-T cells has indicated an added advantage of merging costimulatory signals, particularly CD28 and 4-1BB.¹⁹ Importantly, our findings suggest that the sequence in which costimulatory antibodies are administered may influence their anti-tumor efficacy. Administering both costimulatory molecules simultaneously can enhance tumor control, but this is dependent on the timing of the combination treatment, as evidenced by two separate studies discussed here. Specifically, it was observed that administering CD19-CD28 prior to CD19-4-1BB resulted in superior tumor control compared to the reverse sequence or concomitant treatment. These findings may be in line with the generalized notion that while CD28 co-stimulation provides an early and hard hit, subsequent 4-1BB co-stimulation is responsible for a durable and persistent T cell response. In addition, these preclinical data hints at a potential advantage of bispecific antibody approaches. Unlike CAR-T cells, which deliver both stimulatory signals at once, bispecific antibodies allow for the timing of each signal to be adjusted. This flexibility in scheduling could potentially leverage the unique benefits of each co-stimulatory pathway more effectively.

It is important to note that target antigen expression is a critical factor for the success of targeted therapies. While CD19-negative B-NHLs are uncommon at initial diagnosis, CD19 downregulation can emerge in a subset of DLBCL patients post CD19-CAR-T therapy, with incidences up to 30%.³³ Despite the majority of relapsed/refractory (R/R) NHL patients retaining CD19 expression even after CAR-T therapy, the increasing utilization of CAR-T as a second-line treatment and the risk of disease escape via CD19 antigen loss underscore the importance of evaluating this combination therapy in earlier treatment lines, ideally before CAR-T administration.

In conclusion, this study contributes to the mounting evidence supporting the advantages of incorporating costimulatory signaling into T cell engaging antibody strategies. Notably, we showcase that CD28 agonism can be tailored to offer genuine costimulation in its physiological role, strictly dependent on signal 1. CD19-CD28 could serve as a readily available, off-the-shelf combination partner to glofitamab and other costimulatory antibodies, bypassing the need for genetic T cell modification and special infrastructure required for CAR-T cell approaches.

Authorship

Contributions:

C.Kl. and P.U. contributed to the concepts and idea.

J.S., C.Kl., P.U., M.B., S.G., S.C. contributed to the design of all *in vitro* and *in vivo* experiments.

T.H., G.G., contributed to and coordinated antibody design and engineering.

S.K. designed and coordinated *in vivo* and *in vitro* safety assessment.

M.L., M.J.E. designed and coordinated preclinical *in vivo* pharmacodynamic analyses and *in silico* prediction analysis.

C.J., S.M.K. designed and analyses the clinical pharmacodynamics analysis

J.T., S.H., C.C., C.Ku., J.B.P.V., J.M., B.G. designed, coordinated, and performed *in vitro* assays and analyzed, discussed, and interpreted the results.

D.M. analyzed preclinical RNA sequencing data

J.S., E.B., B.A., A.S., M.L.C., V.N., F.L., L.K. D.S., S.B., S.G., A.H., M.B., J.E., C.H., S.J. designed, coordinated, and performed *in vivo* and *ex vivo* experiments and analyzed, discussed, and interpreted the results.

K.K. and S.W. designed and analyzed the clinical biomarker data.

K.L. designed and coordinated clinical trial

J.S. and J.T. wrote the manuscript. All authors reviewed and edited the manuscript.

Disclosure of conflict of interest:

J.S., T.H., C.Ku., C.C., S.H., G.G., K.K., M.L., M.J.E., D.M. C.J., K.L., S.M.K., B.G., J.M., S.K., L.K., S.W., S.B., S.G., A.V., B.A., V.N., D.S., M.B., E.B., J.E., C.H., F.L., S.J., A.S., M.L.C., S.C., M.B., S.G., C.Kl., and P.U are employees of Roche and hold ownership of Roche stocks and patents. The remaining authors declare no conflict of interest.

Tables

[Two tables for raw data on cytokine measurements](#)

Figure Legends

Figure 1: Design and functional evaluation of an affinity-optimized CD19-targeted CD28 agonist

(A) CD19-CD28 is composed of one CD19 and one CD28 binder. The Fc part is devoid of FcγR binding (hulgG1 PGLALA). Heterodimerization and correct assembly are achieved via knob into hole (kih) mutation and CrossMab technology. (B) Binding of CD19-CD28 affinity variants to human CD28 on CHO cells, genetically modified to overexpress CD28. To monitor unspecific binding interactions, a DP47 hulgG1 was included as negative control. Binding was assessed via flow cytometry. Dots show individual values of technical duplicates. (C) Luciferase activity in an IL-2 reporter assay with Jurkat IL-2 promoter cells after 6 h stimulation with increasing concentrations (0.5 pM – 200 nM) of CD19-CD28 and 10 nM glofitamab. NALM-6 cells served as target cells (E:T ratio 5:1). Dots show individual values of technical duplicates. (D) Experimental design of an *in vivo* biodistribution study. Non-tumor bearing humanized NSG mice (3 mice per group) were treated with vehicle (histidine buffer), or 5 mg/kg of untargeted, Alexa-Fluor-647-(AF647)-labeled CD28 affinity variants. (E, F) Blood and splenic T cells were analyzed for drug binding via flow cytometry. Bars show means +SEM of 3 animals per group and time point. Dots show values of individual mice. (G) Experimental design of *in vivo* efficacy study. Humanized NSG mice (9-10 mice per group) were subcutaneously (s.c.) injected with 1×10^6 NALM-6 lymphoma cells in one flank. After 18 days, mice were treated i.v. with vehicle (histidine buffer), 0.15 mg/kg glofitamab, and 1 mg/kg CD19-CD28 variants according to the depicted timeline. (H) Tumor volumes shown as means +SEM of 9-10 mice per group. Significance was calculated using an unpaired, two-tailed Student's t-test. $**p < 0.01$. (I) Immunohistochemical analysis of CD8⁺ T cell infiltration in tumors on study day 56. Upper row: 2x magnification. Lower row: 20x magnification. Images were captured with a VS120 Virtual Slide Microscope (Olympus) and analyzed with Tissue Studio software (Definiens) for cell quantification.

Figure 2: CD19-CD28 is not superagonistic and relies on signal 1

(A) Activity of human PBMCs in response to TGN1412 and CD19-CD28. PBMCs isolated from buffy coats of three donors were stimulated with TGN1412 or CD19-CD28 (dose titration: 0 nM – 500 nM) and cytokine release was analyzed after 48 h via multiplex analysis. Bars show means +SEM of technical triplicates from 3 donors. (B) Experimental design of *in vivo* cytokine release evaluation. Non-tumor bearing humanized NSG mice (3 mice per group) were treated i.v. with vehicle (histidine buffer), CD19-CD28 (10 or 1 mg/kg), TGN1412 hulgG4 (10 mg/kg), or TGN1412 mslgG1 (10 mg/kg), respectively. (C) Multiplex analysis of serum cytokines at indicated time points post treatment. The absolute cytokine values are shown in Supplemental Table 1. (D) Human PBMCs from four healthy donors were stimulated with glofitamab (0, 1, 10, or 100 pM) and increasing concentrations of CD19-CD28 (0 - 200 nM). Upper row: the percentage of CD25 expression on CD8⁺ T cells was analyzed by flow cytometry after 72 h. Bars show means +SEM of technical triplicates for each donor. Dots show individual values. Lower row: Multiplex analysis of IL-6 in culture supernatants after 48 h. Bars show

means +SEM of technical triplicates. Dots show individual values. The shades of grey correspond to different donors, with each donor consistently represented by the same shade across all treatment conditions.

Figure 3: CD19-CD28 boosts the efficacy of glofitamab in a dose-dependent manner *in vivo* and enhances its activity on patient-derived T cells

(A) Experimental design of *in vivo* efficacy study. Humanized NSG mice bearing orthotopic WSU-DLCL2-Fluc tumors (8 mice per group) were treated with vehicle (histidine buffer), glofitamab (0.15 mg/kg), and CD19-CD28 (1 mg/kg) i.v. according to the displayed timeline. BLI: bioluminescence imaging. (B) Visualization of tumor growth in treated mice after luciferin injection. (C) Tumor burden evaluated by bioluminescence signal (total flux, photons/second) calculated as the mean radiance integrated over the region of interest. Dots represent individual mice. Bars show the median signal +IQR for each treatment group. Statistical analysis was performed using an ordinary one-way ANOVA with Fisher's least significant test. *** $p < 0.0001$. (D) Body weight kinetics. Dots represent means -SEM of 8 mice per group. (E) Overlay of *in vivo* dose finding experiment with *in silico* modelling for trimeric complex formation. (F) Overlay of predicted human PK from on hFcRn tg32 mice and preclinical efficacy thresholds based on *in vivo* studies in NSG mice with pharmacokinetic measurements in participants of the ongoing CD19-CD28 phase 1 trial (NCT05219513). (G) PBMCs from two DLBCL patients (patient 1 and 2) were depleted for internal B cells and were stimulated with the indicated treatments (glofitamab, untargeted TCB and CD19-CD28 were used at a concentration of 1 nM) in the presence of NALM-6 target cells (E:T ratio: 3:1). Graphs show IFN γ and granzyme B release after 72 h, assessed via Cytokine Bead Array. Bars show means and dots show individual values from technical triplicates (patient 1) and duplicates (patient 2).

Figure 4: CD19-CD28 increases pro-inflammatory T cell signatures in tumors and facilitates transendothelial migration

(A) Experimental design of *in vivo* efficacy study. OCI-Ly18 tumor-bearing humanized NSG mice were treated with vehicle (histidine buffer, 10 mice/group), glofitamab (0.15 mg/kg or 1 mg/kg, 25 mice/group), and CD19-CD28 (1 mg/kg, 25 mice/group). On day 19 and 21, 5 scouts per group were sacrificed for analysis. Gpt: Gazyva (obinutuzumab) pretreatment, 30 mg/kg. (B) Gene signature analysis via RNA sequencing from frozen tumor tissue at different time points. Color code shows change between glofitamab monotherapy vs. combination with CD19-CD28 (red denotes higher and blue lower expression in the combination). Statistical significance was calculated using * $p < 0.05$, ** $p < 0.01$ (adjusted for multiple testing using FDR correction). Individual genes are shown in Supplemental Figure 5E (C) Immunofluorescence microscopy of tumors on study day 29, showing ICAM1 (red), CD31 (green), and CD8 (cyan). Images were captured on a Leica SP8 inverted confocal microscope using a 40x lens, with a resolution of 512x512 pixels and a z-spacing of 1.5 μm . (D) Image quantification was performed with Imaris 9.6. Dot plots show spots created on ICAM1 signal per μm^3 (left) and spots created on ICAM1-expressing endothelial (CD31⁺) cells of total ICAM1-expressing cells

in tumors (right) on study day 29, quantified by fluorescence microscopy. Dots represent intratumoral regions from one or more mice. One-way ANOVA with Tukey's multiple comparison test * $p < 0.05$, ** $p < 0.01$.

Figure 5: Triple combination of glofitamab with CD19-CD28 and CD19-4-1BBL deepens and prolongs antitumor responses *in vivo*

(A) PBMC-derived T cells from a healthy donor were stimulated with glofitamab and a dose titration of CD19-CD28. Graphs show 4-1BB expression of CD4⁺ and CD8⁺ T cells after 48 h, assessed via flow cytometry. Shown are means +SEM of technical triplicates. (B) Cytokine release of splenocytes derived from a B cell lymphoma patient after 72 h of stimulation with 25 pM glofitamab and/or CD19-CD28 or CD19-4-1BBL at 0.5 or 1 nM. Cytokines were assessed via Cytokine Bead Array. Bars show means and dots indicate individual values of technical duplicates. (C) Experimental design of *in vivo* efficacy study in OCI-Ly18 tumor-bearing humanized NSG mice. 12 mice per group received vehicle (histidine buffer), or obinutuzumab pretreatment (Gpt, 30 mg/kg), followed by weekly injections of glofitamab (5 mg/kg) alone or in combination with CD19-CD28 (1 mg/kg), CD19-4-1BBL (1 mg/kg) according to the depicted scheme. Costimulatory antibodies were injected simultaneously with glofitamab. (D, E) Tumor volumes assessed via caliper. Each line represents tumor volume over time in one mouse.

Figure 6: Pretreatment with obinutuzumab (Gpt), followed by sequential administration of glofitamab and CD19-CD28 mitigates cytokine release

(A) Non-tumor bearing humanized NSG mice (6 mice per group) were treated according to the depicted scheme, using the following doses: Gpt, 30 mg/kg; glofitamab, 0.15 mg/kg; CD19-CD28, 1 mg/kg. Histidine buffer was used as vehicle. Glofitamab and CD19-CD28 were either administered simultaneously (sim.) or sequentially (seq.), with a 3-day interval between treatments. Seq. and sim. combinations were either administered with or without Gpt 7 days before therapy. (B) Multiplex analysis of cytokines in serum at 4, 24 and 72 h after last therapy injection. The absolute cytokine values are reported in Supplemental Table 2. (C) Body weight kinetics. Dots show means +SEM of body weight change of 6 mice per group. (D-I) Comparative analysis of T cell activation and B cell depletion in spleens, assessed via flow cytometry on study day 6. Bars show means and dots indicate values of individual remaining mice at study termination. (J) Line plot shows mean fold change of plasma cytokine concentrations at indicated timepoints in patients with r/r NHL enrolled in the phase 1 clinical trial of glofitamab in combination with CD19-CD28 (NCT05219513). The error bars indicate standard error of mean and the dashed horizontal line indicates the baseline. The timing of each drug administration is shown by the dashed arrows. CxDx: Cycle x Day x.

References

Blood guidelines: In superscript numbers using Blood Style Guide

1. Ahmed, H., *et al.* Role of T cells in cancer immunotherapy: Opportunities and challenges. *Cancer Pathogenesis and Therapy* **1**, 116-126 (2023).
2. Waldman, A.D., Fritz, J.M. & Lenardo, M.J. A guide to cancer immunotherapy: from T cell basic science to clinical practice. *Nature Reviews Immunology* **20**, 651-668 (2020).
3. Esensten, J.H., Helou, Y.A., Chopra, G., Weiss, A. & Bluestone, J.A. CD28 costimulation: from mechanism to therapy. *Immunity* **44**, 973-988 (2016).
4. Lavin, Y., *et al.* Innate immune landscape in early lung adenocarcinoma by paired single-cell analyses. *Cell* **169**, 750-765. e717 (2017).
5. Tirosh, I., *et al.* Dissecting the multicellular ecosystem of metastatic melanoma by single-cell RNA-seq. *Science* **352**, 189-196 (2016).
6. Zheng, C., *et al.* Landscape of infiltrating T cells in liver cancer revealed by single-cell sequencing. *Cell* **169**, 1342-1356. e1316 (2017).
7. Zhukovsky, E.A., Morse, R.J. & Maus, M.V. Bispecific antibodies and CARs: generalized immunotherapeutics harnessing T cell redirection. *Current opinion in immunology* **40**, 24-35 (2016).
8. Gao, Y., Wang, Y., Luo, F. & Chu, Y. Optimization of T Cell redirecting strategies: obtaining inspirations from natural process of T cell activation. *Frontiers in Immunology* **12**, 664329 (2021).
9. Sun, L.L., *et al.* Anti-CD20/CD3 T cell-dependent bispecific antibody for the treatment of B cell malignancies. *Science translational medicine* **7**, 287ra270-287ra270 (2015).
10. Bacac, M., *et al.* CD20-TCB with obinutuzumab pretreatment as next-generation treatment of hematologic malignancies. *Clinical Cancer Research* **24**, 4785-4797 (2018).
11. Bannerji, R., *et al.* Emerging clinical activity of REGN1979, an anti-CD20 x anti-CD3 bispecific antibody, in patients with relapsed/refractory follicular lymphoma (FL), diffuse large B-cell lymphoma (DLBCL), and other B-cell non-Hodgkin lymphoma (B-NHL) subtypes. *Blood* **132**, 1690 (2018).
12. Budde, L.E., *et al.* Mosunetuzumab, a full-length bispecific CD20/CD3 antibody, displays clinical activity in relapsed/refractory B-cell non-Hodgkin lymphoma (NHL): interim safety and efficacy results from a phase 1 study. *Blood* **132**, 399 (2018).
13. Dickinson, M.J., *et al.* Glofitamab for relapsed or refractory diffuse large B-cell lymphoma. *New England Journal of Medicine* **387**, 2220-2231 (2022).
14. Suntharalingam, G., *et al.* Cytokine storm in a phase 1 trial of the anti-CD28 monoclonal antibody TGN1412. *New England Journal of Medicine* **355**, 1018-1028 (2006).
15. Mandikian, D., *et al.* Relative Target Affinities of T-Cell-Dependent Bispecific Antibodies Determine Biodistribution in a Solid Tumor Mouse Model. *Molecular Cancer Therapeutics* **17**, 776-785 (2018).
16. Hussain, K., *et al.* Upregulation of FcγRIIb on monocytes is necessary to promote the superagonist activity of TGN1412. *Blood* **125**, 102-110 (2015).

17. Poirier, N., Blancho, G. & Vanhove, B. CD28-specific immunomodulating antibodies: what can be learned from experimental models? *American Journal of Transplantation* **12**, 1682-1690 (2012).
18. Beyersdorf, N., Hanke, T., Kerkau, T. & Hünig, T. Superagonistic anti-CD28 antibodies: potent activators of regulatory T cells for the therapy of autoimmune diseases. *Annals of the rheumatic diseases* **64**, iv91-iv95 (2005).
19. Ramos, C.A., *et al.* In vivo fate and activity of second-versus third-generation CD19-specific CAR-T cells in B cell non-Hodgkin's lymphomas. *Molecular Therapy* **26**, 2727-2737 (2018).
20. Claus, C., *et al.* Tumor-targeted 4-1BB agonists for combination with T cell bispecific antibodies as off-the-shelf therapy. *Science translational medicine* **11**, eaav5989 (2019).
21. Attarwala, H. TGN1412: from discovery to disaster. *Journal of Young Pharmacists* **2**, 332-336 (2010).
22. Eastwood, D., *et al.* Severity of the TGN 1412 trial disaster cytokine storm correlated with IL-2 release. *British journal of clinical pharmacology* **76**, 299-315 (2013).
23. Eastwood, D., *et al.* Monoclonal antibody TGN1412 trial failure explained by species differences in CD28 expression on CD4+ effector memory T-cells. *British journal of pharmacology* **161**, 512-526 (2010).
24. Findlay, L., *et al.* Improved in vitro methods to predict the in vivo toxicity in man of therapeutic monoclonal antibodies including TGN1412. *Journal of immunological methods* **352**, 1-12 (2010).
25. Pallardy, M. & Hünig, T. Primate testing of TGN1412: right target, wrong cell. *British journal of pharmacology* **161**, 509-511 (2010).
26. Stebbings, R., Eastwood, D., Poole, S. & Thorpe, R. After TGN1412: recent developments in cytokine release assays. *Journal of immunotoxicology* **10**, 75-82 (2013).
27. Skokos, D., *et al.* A class of costimulatory CD28-bispecific antibodies that enhance the antitumor activity of CD3-bispecific antibodies. *Science translational medicine* **12**, eaaw7888 (2020).
28. Wei, J., *et al.* CD22-targeted CD28 bispecific antibody enhances antitumor efficacy of odronextamab in refractory diffuse large B cell lymphoma models. *Science Translational Medicine* **14**, eabn1082 (2022).
29. Schuster, S.J., *et al.* Chimeric antigen receptor T cells in refractory B-cell lymphomas. *New England Journal of Medicine* **377**, 2545-2554 (2017).
30. Neelapu, S.S., *et al.* Axicabtagene ciloleucel CAR T-cell therapy in refractory large B-cell lymphoma. *New England Journal of Medicine* **377**, 2531-2544 (2017).
31. Schuster, S.J., *et al.* Tisagenlecleucel in adult relapsed or refractory diffuse large B-cell lymphoma. *New England Journal of Medicine* **380**, 45-56 (2019).
32. Betts, A., *et al.* A Translational Quantitative Systems Pharmacology Model for CD3 Bispecific Molecules: Application to Quantify T Cell-Mediated Tumor Cell Killing by P-Cadherin LP DART®. *The AAPS Journal* **21**, 66 (2019)
33. Plaks, V., *et al.* CD19 target evasion as a mechanism of relapse in large B-cell lymphoma treated with axicabtagene ciloleucel. *Blood* **138**, 1081-1085 (2021)

Figure 1: Design and functional evaluation of an affinity-optimized CD19-targeted CD28 agonist

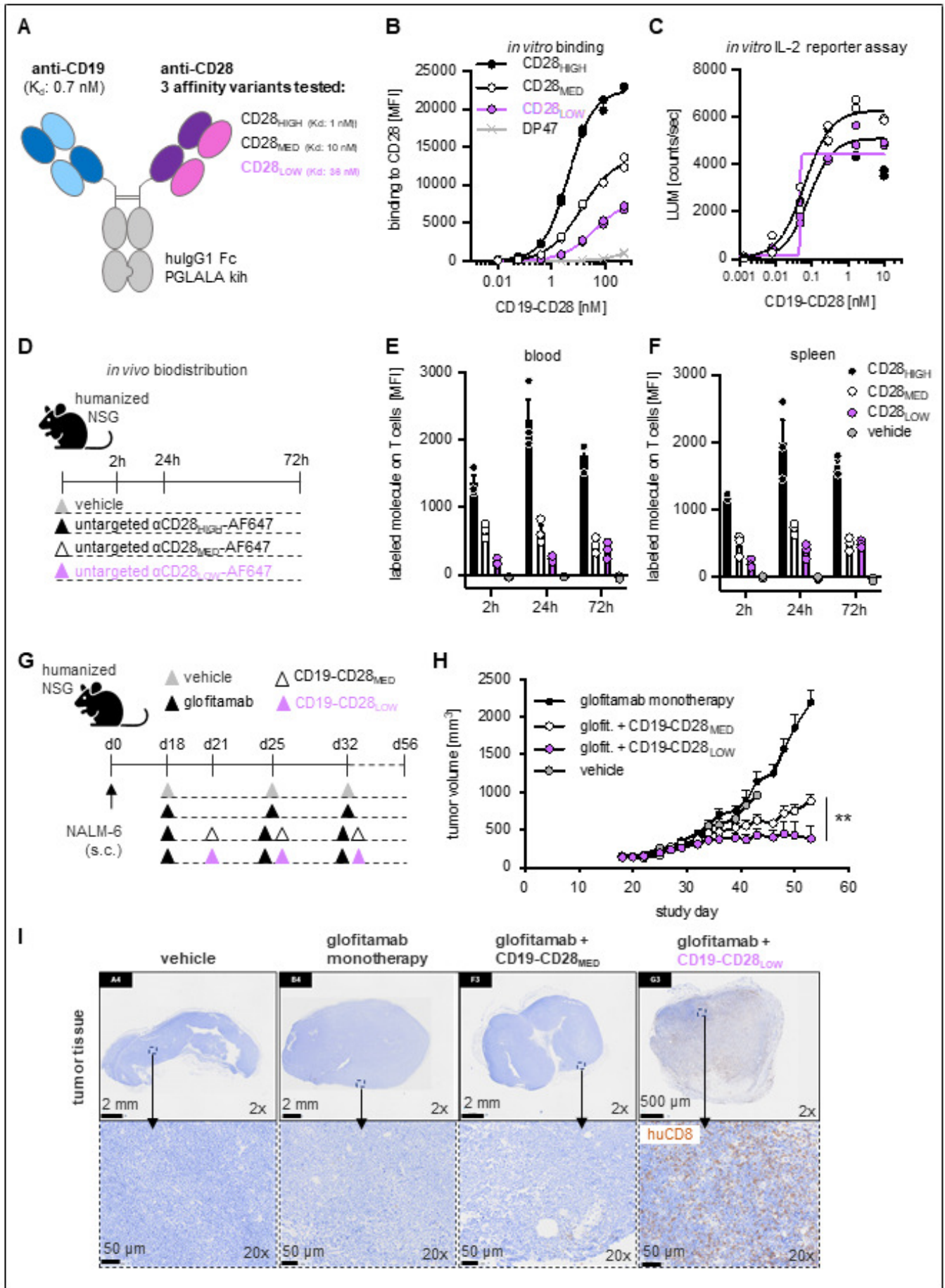


Figure 2: CD19-CD28 is not superagonistic and relies on signal 1

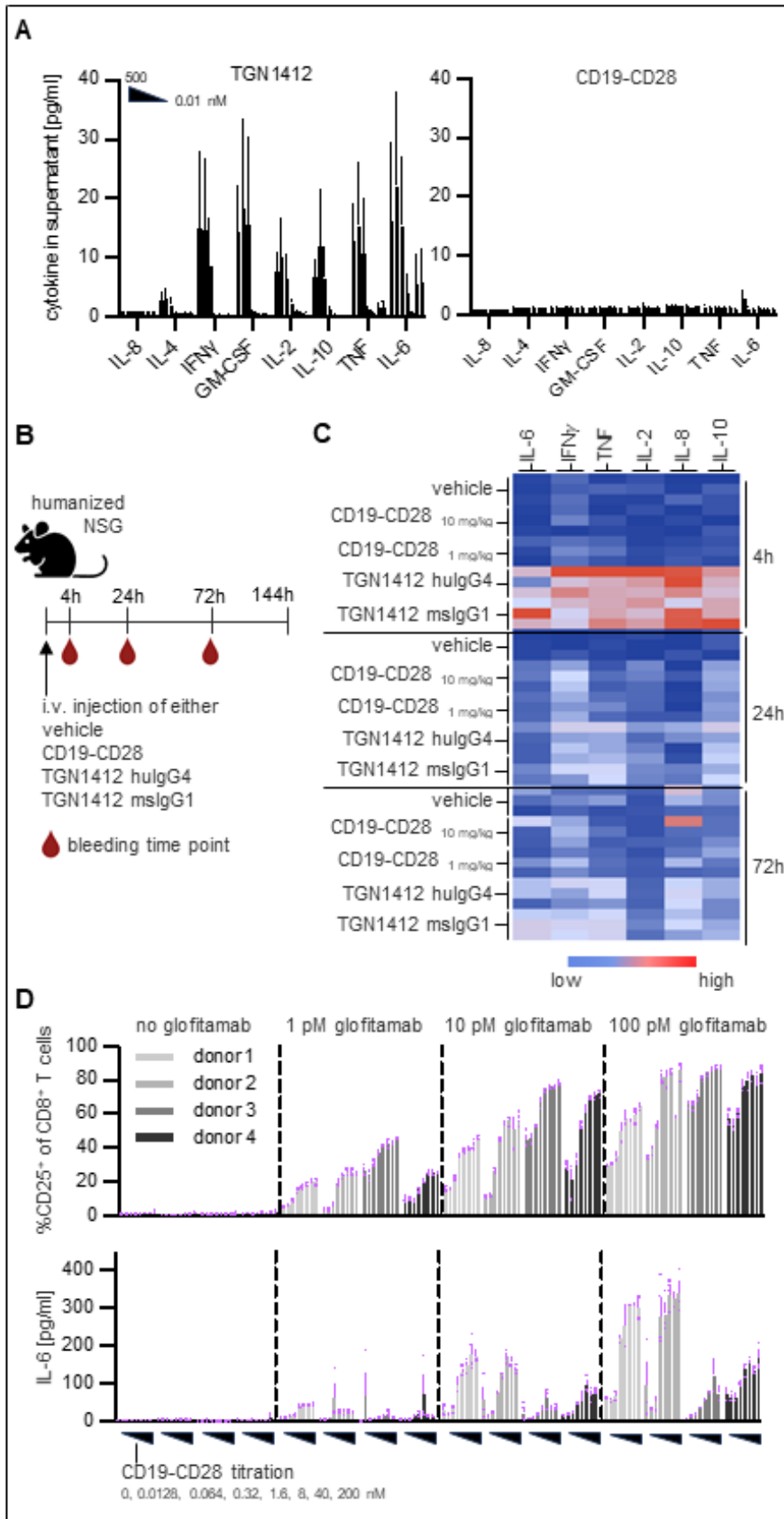


Figure 3: CD19-CD28 boosts the efficacy of glofitamab in a dose-dependent manner *in vivo* and enhances its activity on patient-derived T cells

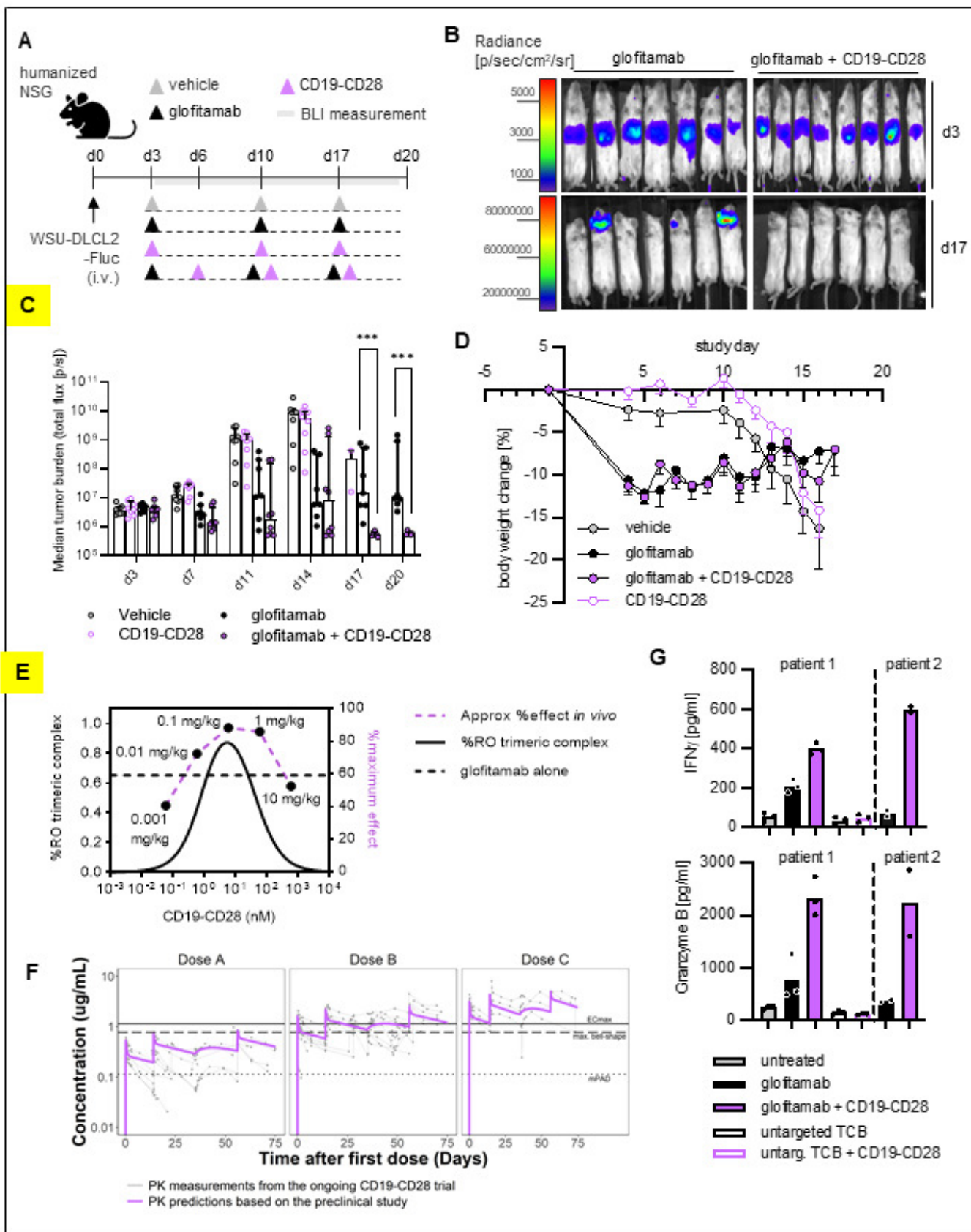


Figure 4: CD19-CD28 increases pro-inflammatory T cell signatures in tumors and facilitates transendothelial migration

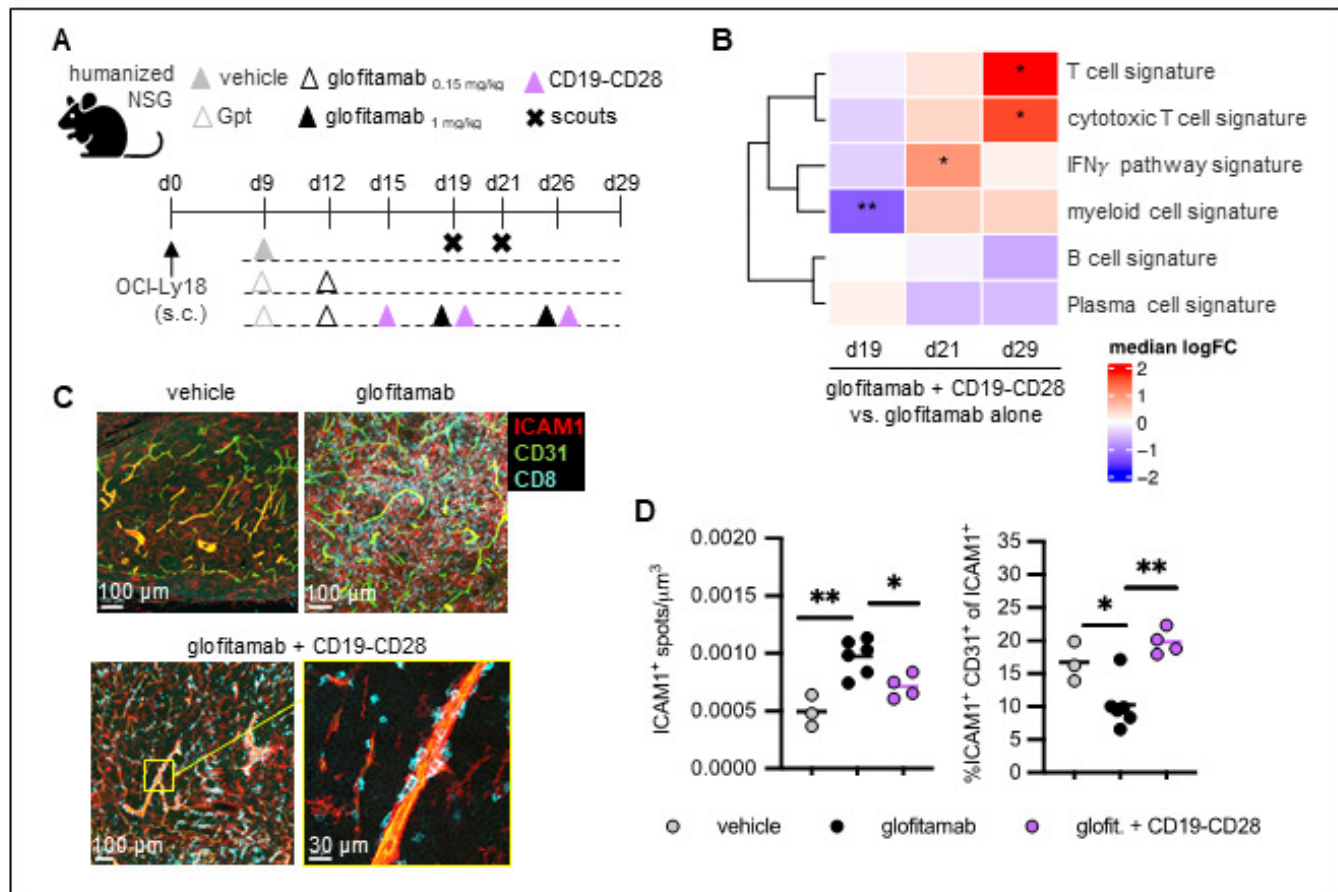


Figure 5: Triple combination of glofitamab with CD19-CD28 and CD19-4-1BBL deepens and prolongs antitumor responses *in vivo*

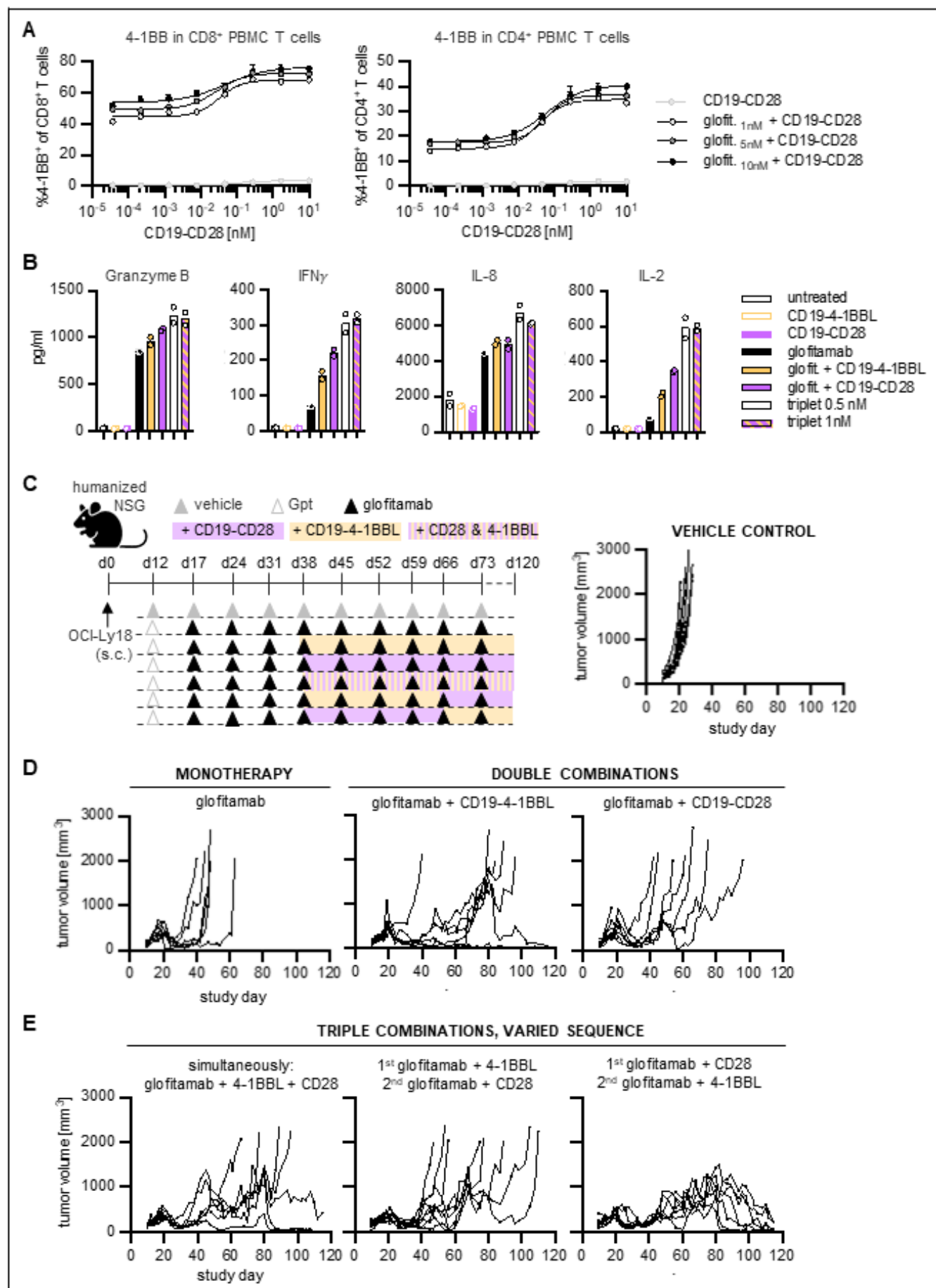
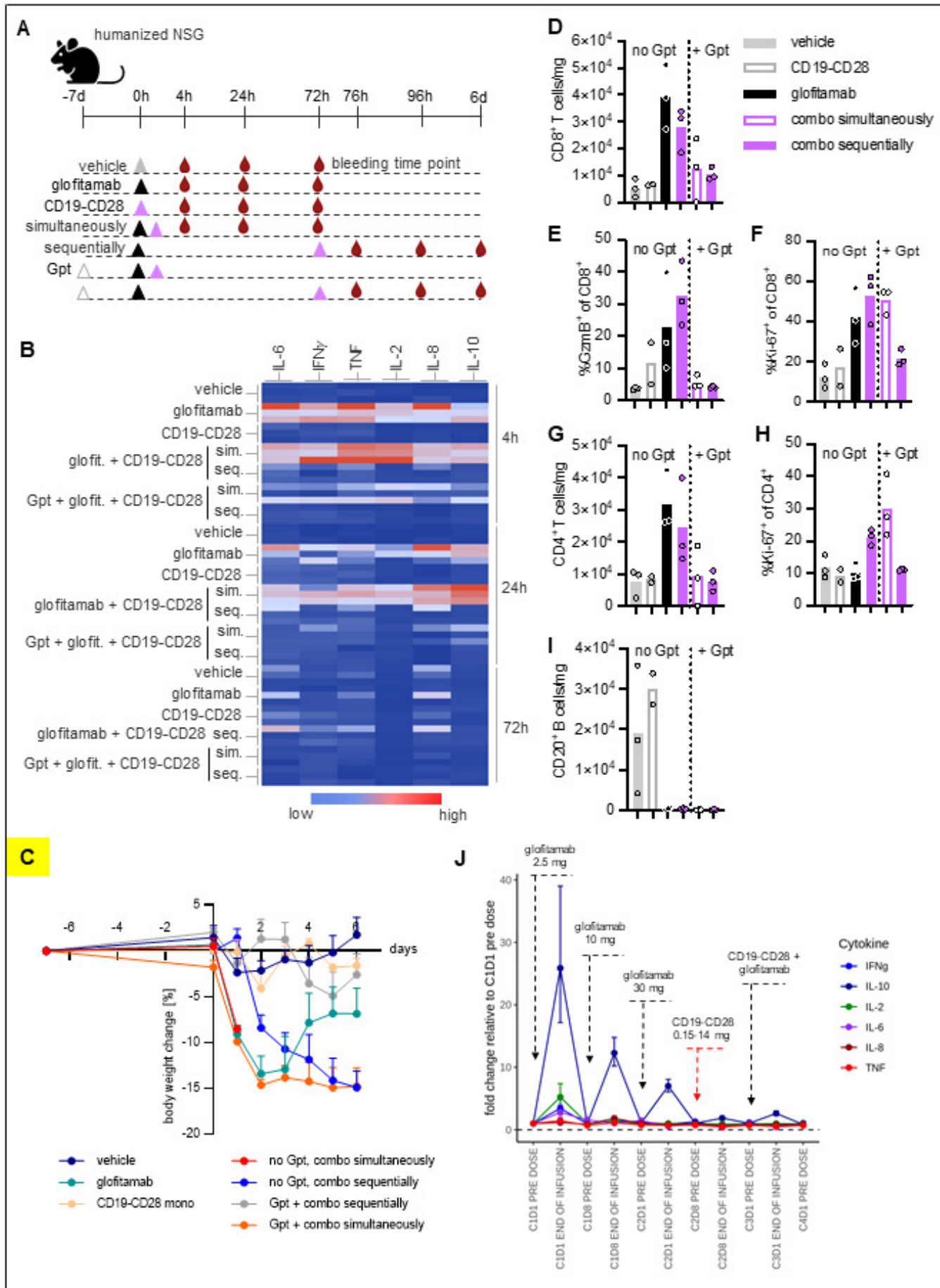
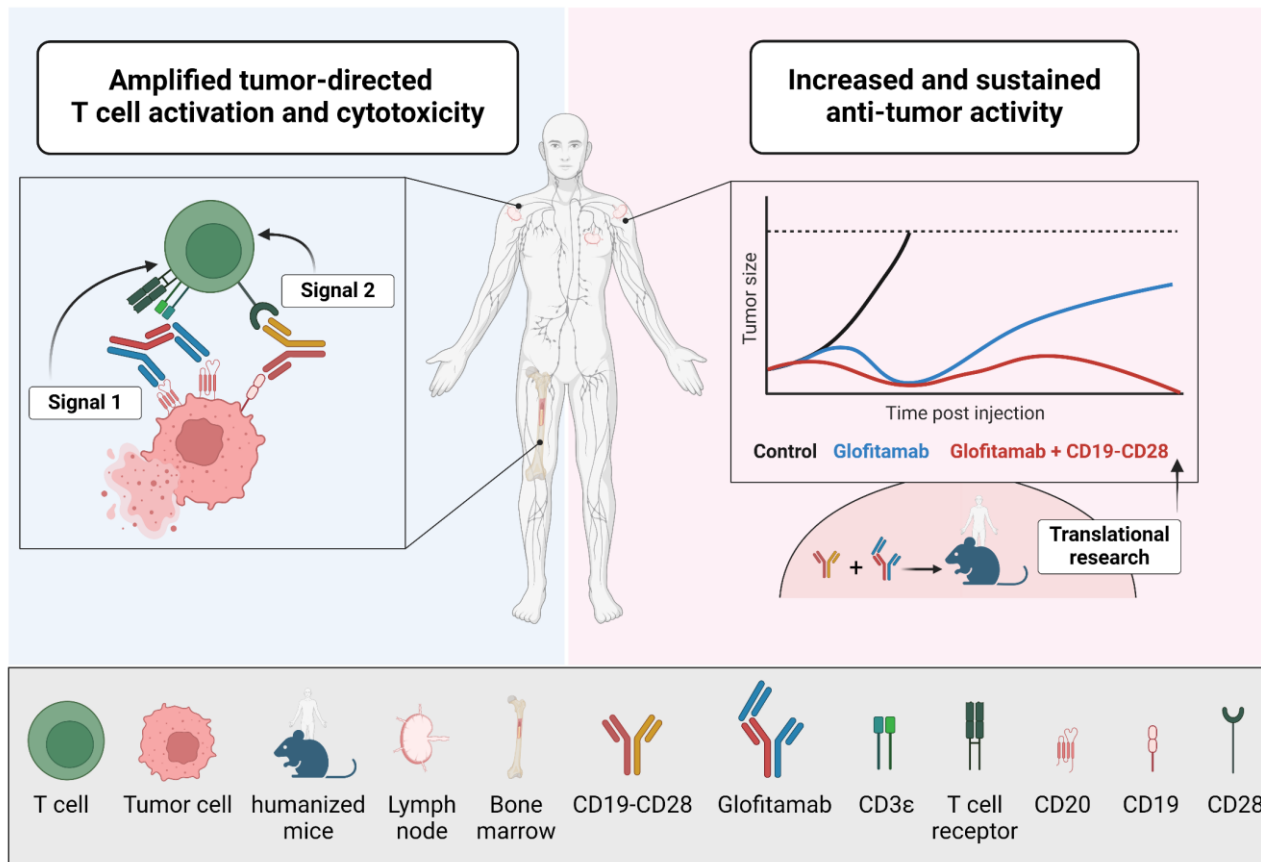


Figure 6: Pretreatment with obinutuzumab (Gpt) followed by sequential administration of glofitamab and CD19-CD28 mitigates cytokine release



CD19-CD28: A CD19-Targeted Affinity-Optimized CD28 Agonist for Combination With Glofitamab As Off-the-Shelf Immunotherapy



Conclusions: The bispecific CD19-CD28 agonist, through its molecular design, enhances glofitamab's anti-tumor efficacy by delivering a safe and effective costimulatory signal to intratumoral T cells.

Sam et al. DOI: 10.xxxx/*blood*.2024xxxxxx

**Blood
Visual
Abstract**