

Perturbation of B-cell development in mice overexpressing the Bcl-2 homolog A1

Peter I. Chuang, Samantha Morefield, Chien-Ying Liu, Stephen Chen, John M. Harlan, and Dennis M. Willerford

Decisions about cell survival or death are central components of adaptive immunity and occur at several levels in immune system development and function. The Bcl-2 family of homologous proteins plays an important role in these decisions in lymphoid cells. Bcl-2, Bcl-xL, and A1 are differentially expressed during B- and T-cell development, and they have shared and distinct roles in regulating cell death. We sought to gain insight into the role of A1 in immune system development and function. A murine *A1-a* transgene was expressed under the control of the E μ enhancer, and mice with A1 overexpres-

sion in B- and T-cell lineages were derived. Thymocytes and early B cells in E μ -A1 mice showed extended survival. B-lineage development was altered, with expansion of the pro-B cell subset at the expense of pre-B cells, suggesting an impairment of the pro- to pre-B-cell transition. This early B-cell phenotype resembled E μ -Bcl-xL mice but did not preferentially rescue cells with completed V(D)J rearrangements of the immunoglobulin heavy chain. In contrast to E μ -Bcl-2 transgenes, A1 expression in pro-B cells did not rescue pre-B-cell development in SCID mice. These studies indi-

cate that A1 protects lymphocytes from apoptosis *in vitro* but that it has lineage- and stage-specific effects on lymphoid development. Comparison with the effects of Bcl-2 and Bcl-xL expressed under similar control elements supports the model that antiapoptotic Bcl-2 homologs interact differentially with intracellular pathways affecting development and apoptosis in lymphoid cells. (Blood. 2002;99:3350-3359)

© 2002 by The American Society of Hematology

Introduction

Regulation of cell survival is a critical process in the development and function of multicellular organisms.^{1,2} The family of proteins sharing homology with Bcl-2 plays key roles in regulating cell fate and includes members that antagonize and others that promote cell death.^{3,4} Available studies suggest a role for the antiapoptotic proteins Bcl-2, Bcl-xL, and A1 in the development, function, or both of the immune system. In mice, Bcl-2 plays a critical role in the survival of mature T and B cells.⁵⁻⁷ Variations in its expression may enhance specific immunity or may limit the extent of antigen responses.^{4,8} Bcl-xL is developmentally regulated in the thymus and is required for the survival of immature thymocytes, suggesting a potential role in the generation of central tolerance.⁹⁻¹¹ In the bone marrow, Bcl-xL is expressed in pre-B cells and is required for the survival of early B-lineage cells.^{10,12} Bcl-xL is down-regulated at later stages of B-cell development, but it is induced in activated lymphocytes and may play a role in the selection of beneficial clones.¹²⁻¹⁴ Less is known regarding A1, which is inducible as an early-response gene to a variety of stimuli in myeloid, lymphoid, and endothelial cells.¹⁵⁻²⁰ Like Bcl-2 and Bcl-xL, A1 is developmentally regulated in the immune system and is induced on cellular activation, suggesting a role in development and immune responses.¹⁸ A1 is unusual in that it is encoded by 4 distinct genes in mice, termed *A1-a* through *A1-d*.²¹ Aside from *A1-c*, which bears a frameshift insertion, *A1-a*, *A1-b*, and *A1-d* are 97% identical, and in neutrophils all 3 isoforms are expressed. Increased apoptosis of neutrophils has been demonstrated in mice with targeted inactiva-

tion of the *A1-a* isoform, but this subtle phenotype likely reflects functional compensation by the other genes.

Although Bcl-2, Bcl-xL, and A1 all have the property of enhancing cell survival, it remains unclear whether the individual functions of these proteins represent the same fundamental activity targeted to particular developmental and physiologic circumstances. Alternatively, these homologs could have important individual activities within the cell, such as regulating different categories of death signals or other types of cellular stimuli. To study the functional properties of A1 in lymphoid cells *in vivo*, we have constructed transgenic mice that overexpress *A1-a* under the control of the immunoglobulin intronic enhancer E μ . This control element has been well characterized in transgenic systems. Moreover, numerous studies have been performed using Bcl-2 and Bcl-xL overexpressed under E μ control. By comparing the similarities and differences in the phenotypes of E μ -Bcl-2, E μ -Bcl-xL, and E μ -A1 mice, we sought to gain insight into the distinct cellular functions of these homologs.

Materials and methods

E μ -A1 transgenic mice

Murine cDNA corresponding to positions 1 to 676 of the *A1-a* gene¹⁵ was amplified from mouse spleen RNA by reverse transcription-polymerase chain reaction (RT-PCR), subcloned into the pT7BlueR vector (Novagen,

From the Departments of Medicine and Immunology, University of Washington, Seattle.

Submitted August 8, 2001; accepted December 31, 2001.

Supported by National Institutes of Health grants PHS03174 (J.M.H.), AI41051 (D.M.W.), and CA88075 (D.M.W.) and by an American Lung Association-Washington Affiliate Research Grant (P.I.C.). P.I.C. is the recipient of an American Heart Association Clinician Scientist Award. C.Y.L. is the recipient of a Chang-Gung Memorial Hospital Sabbatical Scholarship Award.

Reprints: Dennis M. Willerford, Division of Hematology, University of Washington School of Medicine, Box 357710, 1959 NE Pacific St, Seattle, WA 98195; e-mail: dwiller@u.washington.edu.

The publication costs of this article were defrayed in part by page charge payment. Therefore, and solely to indicate this fact, this article is hereby marked "advertisement" in accordance with 18 U.S.C. section 1734.

© 2002 by The American Society of Hematology

Madison, WI), and verified by DNA sequencing. The *A1-a* cDNA sequence was recloned into the *Bam*HI site in the pHSE3' expression cassette²² (Figure 1A). This vector includes the H-2K^b promoter and the E μ enhancer, and it directs expression to the B- and T-lymphoid lineages.²² The E μ -A1 transgene construct was liberated from the plasmid vector using a *Xho*I digest and was introduced into C57BL/6 eggs by pronuclear injection using standard techniques. Founder mice were detected by Southern blot analysis of tail DNA and were bred with C57BL/6 mice to generate individual mouse lines. Offspring were typed using PCR for wild-type and transgene-specific *A1-a* sequences using the following primers: 5'-GCG ATC ACC AAG AAC CAA TC-3' (5' H-2K^b primer); 5'-GCC ATC TTC CCT GGC AGA GC-3' (5' A1 primer); and 5'-GCCATCTTCCCTGGCAGAGC-3' (3' A1 primer). All mice were housed in a specific pathogen-free facility. E μ -A1 line 8 mice were bred with SCID mice maintained on a C57BL/6 background in our facility. Transgene-positive offspring were interbred, and SCID/SCID offspring were identified by screening peripheral blood for T cells using flow cytometry.

To assess transgene expression, total RNA was harvested from thymus, spleen, bone marrow, and kidney using Tri-reagent (Sigma, St Louis, MO), according to the manufacturer's instructions. RNA (1.5 μ g per sample) was used in a ribonuclease protection assay (Multi-probe RPA; BD PharMingen, San Diego, CA) as previously described.^{17,23} The probe used in this assay protected nucleotides 140 to 503 in the *A1-a* cDNA. Within the range of this *A1-a* probe, there were 6 mismatches for the *A1-b* mRNA subtype, 9 mismatches for *A1-c*, and 4 mismatches for *A1-d*. As a result, only the *A1-a* subtype mRNA was expected to yield the longest (364 base pair [bp]) protected fragment. Quantitation of protected bands was performed using densitometric analysis of autoradiograms (National Institutes of Health Image software, version 1.62).

Polymerase chain reaction assays

Semiquantitative PCR assays for DJ and V(D)J rearrangement were performed using purified genomic DNA as described.²⁴ Equivalence of

sample DNA was assessed in parallel PCR amplifications performed to amplify CD14 and was analyzed on ethidium bromide-stained agarose gels. RT-PCR was performed on RNA extracted from 10⁷ bone marrow cells with the RNA-Easy mini kit (Qiagen, Valencia, CA), according to the manufacturer's instructions. Four microliters RNA preparation was treated with 10 U RNase-Free DNase I (Roche Molecular Biochemicals, Mannheim, Germany) in Superscript-II RT buffer (Life Technologies/Invitrogen, Carlsbad, CA) for 10 minutes at 25°C, followed by inactivation at 65°C for 10 minutes. One half of the reaction mixture was immediately reverse transcribed with Superscript-II, according to the manufacturer's standard protocol. The other half was carried through identical reactions, except that the reverse transcriptase was omitted to verify the lack of a signal derived from genomic DNA. For PCR, 1 μ L reverse-transcribed reaction mixture was used under conditions shown to be semiquantitative, with primer pairs (30 μ M each) specific for β -actin, λ 5, RAG-1, and RAG-2, as described by Li et al.²⁵ In similar PCR reactions, the murine $c\mu$ primer sequences used were TAA GAA TCT GGT GGC CAT GG (5' $c\mu$ primer) and TTG TTC TCG ATG GTC ACC G (3' $c\mu$ primer) and yielded a single 453-bp product. The E μ -A1 primers used were the 5' H-2K^b primer and the 3' A1 primer detailed above; it yielded a single 250-bp product.

Analysis of lymphoid development

Serum immunoglobulin levels were determined using enzyme-linked immunosorbent assays as described.²⁶ Flow cytometry was performed using antibodies conjugated to fluorescein isothiocyanate, phycoerythrin, biotin, Cychrome, or allophycocyanin obtained from BD PharMingen. Biotin-conjugated antibodies were developed with streptavidin-Cychrome (PharMingen). Cell suspensions were stained as described²⁷ and were analyzed using a FACScalibur instrument equipped with dual lasers (Becton Dickinson, San Jose, CA). Data were analyzed using FlowJo software (TreeStar, San Carlos, CA). Cell-sorting experiments were performed on bone marrow cells pooled from 2 to 4 animals and were stained with fluorescein isothiocyanate-anti-IgM, phycoerythrin-anti-CD43, and Cychrome-anti-B220 (BD PharMingen). Using a FACSVantage cell sorter (Becton Dickinson), pre-B (B220⁺IgM⁻CD43⁻) and pro-B (B220⁺IgM⁻CD43⁺) subsets were sorted. Reanalysis of sorted cells indicated greater than 94% purity. Cell-cycle analysis was performed using simultaneous surface staining with anti-B220 antibodies and DAPI (4,6-diamidino-2-phenylindole) staining for DNA content. Antibody-stained bone marrow cells were resuspended in Tris-buffered saline containing 10 mg/mL DAPI and 0.1% Nonidet-P40 (both from Accurate Chemical, Westbury, NY). Samples were analyzed on a dual-laser LSR instrument (Becton Dickinson) with UV and 488-nm excitation. Data were analyzed using FlowJo software and were gated to exclude doublets. Cycling cells were calculated using the Watson pragmatic algorithm.

Cell survival assays

Thymocyte survival in vitro was assessed after disrupting thymic lobes over nylon mesh and plating cells at a density of 1 \times 10⁶/mL in RPMI 1640 supplemented with 10% fetal calf serum, 2 mM L-glutamine, nonessential amino acids, and antibiotics. Cells were cultured in 24-well plates at 37% in a humidified 6% CO₂ incubator in medium or in dexamethasone (0.2 or 1 μ M) or were exposed to γ -irradiation (2.5 or 10 Gy) and were studied for the ensuing 4 days. Cells were counted using a hemacytometer, and viability was determined by trypan blue exclusion. Bone marrow survival was studied as described.²⁸

Results

Increased A1 mRNA expression in lymphoid tissues of E μ -A1 transgenic mice

To study the in vivo effects of A1 overexpression on immune system development, we inserted cDNA representing the *A1-a* isoform into an expression system based on the IgH intronic

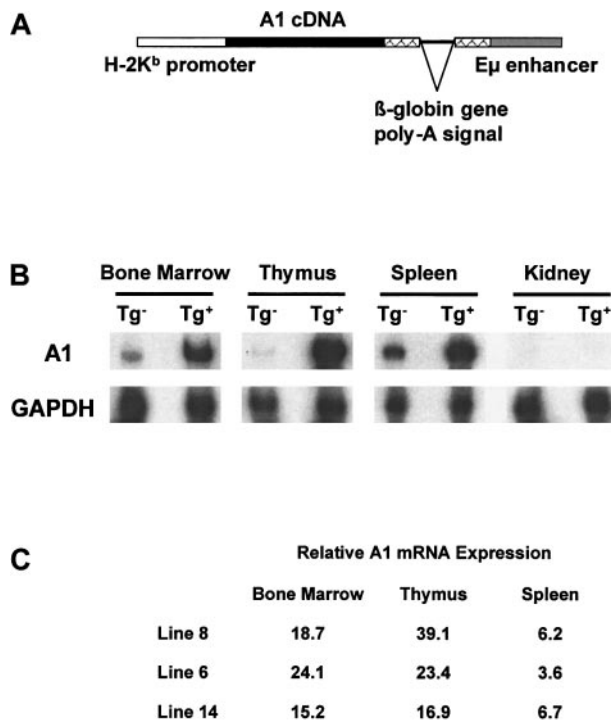


Figure 1. E μ -A1 transgenic mice. (A) E μ -A1 transgene construct, containing full-length *A1-a* cDNA, E μ enhancer, and H-2K^b promoter. (B) A1 mRNA expression in transgenic mice and wild-type littermates. Ribonuclease protection assays for *A1-a* and GAPDH control are shown for the indicated tissues for line 8 mice. (C) Overexpression of *A1-a* mRNA in 3 E μ -A1 transgenic mouse lines. Figures represent -fold increases in *A1-a* mRNA in the indicated tissues over those of wild-type littermates. Results are the mean from 2 animals of each genotype and are normalized to the GAPDH signal.

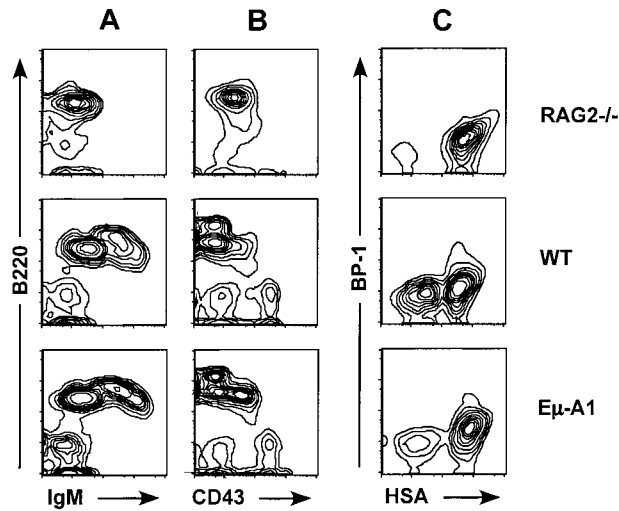


Figure 2. Flow cytometric analysis of bone marrow B-lineage cells in $E\mu$ -A1 mice. Comparison with Rag-2^{-/-} mice and wild-type (WT) littermates. (A, B) Bone marrow cells stained with antibodies to B220, IgM, and CD43 and gated on lymphocytes by scatter characteristics. (C) Four-color analysis of bone marrow cells stained with antibodies to B220, CD43, BP-1, and HSA and gated on B220⁺CD43⁺ pro-B cells.

enhancer $E\mu$ and the H-2K^b promoter²² (Figure 1). Steady-state levels of *AI-a* mRNA were studied using RNase protection assays in 3 independent transgenic lines. We found that *AI-a* mRNA levels were substantially increased in thymus, bone marrow, and spleen but not in kidney in 3 independent transgenic lines. Expression of transgenic mRNA was subsequently confirmed using PCR to detect A1 transcripts containing sequences from the heterologous control element (see below and Figure 7). The observed expression pattern was consistent with previous studies using this transgene regulatory system.²²

Effects of A1 overexpression on immune system development

Four independent lines of $E\mu$ -A1 transgenic mice were analyzed for effects on primary and secondary lymphoid tissues using flow cytometry. In all lines, no discernible effects on thymic cellularity or subsets defined by CD4 and CD8 expression were observed (data not shown). B lymphopoiesis was analyzed using 3-color flow cytometry with markers for IgM, B220, and CD43. In all 4 lines, an increase in the percentage of B220⁺IgM⁻CD43⁺ pro-B cells was observed (Figure 2, Table 1). This effect was most pronounced in line 8, which was selected for more detailed studies. Analysis of absolute cell numbers contained in 2 femurs from line 8 or control mice indicated that the proportional increase in the ratio of pro- to pre-B cells was the result of an increase in pro-B-cell numbers and a decrease in pre-B-cell numbers. B-cell developmen-

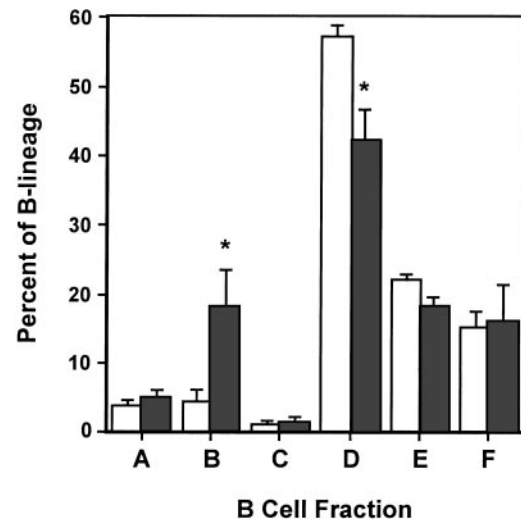


Figure 3. Analysis of bone marrow B-cell lineage development. Flow cytometric analysis in $E\mu$ -A1 transgenic mice (shaded bars) and wild-type littermates (open bars) using the convention devised by Hardy et al.²⁹ Flow cytometry data were gated as described "Materials and methods." Data are presented as the mean (\pm SD) percentage of the B220⁺ lymphocyte population for 4 mice of each genotype. Statistically significant differences ($P < .05$) were found in fraction B (subset of pro-B cells) and fraction D (pre-B cells), signified by asterisks.

tal subsets were further analyzed using 4-color flow cytometry according to the scheme of Li et al²⁵ and Hardy et al²⁹ (Figures 2, 3). This analysis showed that the expanded population of B220⁺IgM⁻CD43⁺ pro-B cells was accounted for primarily by an increase in fraction B (heat-stable antigen [HSA⁺] BP1⁻), a population that precedes delivery of the pre-B-cell receptor signal (Figure 3). Taken together, these data indicate that the $E\mu$ -A1 transgene led to an expansion of pro-B cells, and they suggest that this was in part caused by impaired progression from the pro-B-cell to the pre-B-cell stage.

The pro-B-cell stage is characterized by ordered D to J, followed by V to DJ rearrangement of the IgH locus. Successful in-frame IgH rearrangement leads to expression of the μ H protein and signals the transition to the pre-B-cell stage.³⁰ We assessed IgH DJ and V(D)J rearrangement in the expanded pro-B-cell population in $E\mu$ -A1 transgenic mice. B220⁺ bone marrow cells representing pro- and pre-B-cell subsets were purified by cell sorting (Figure 4). Genomic DNA from equivalent cell numbers was extracted and subjected to PCR as previously described²⁴ using a primer downstream of J_{H3} , paired with a degenerate primer complementary to 5' D_H segments or to V_H segments. Amplification of polyclonal B-lineage populations gives a 3-part ladder representing rearrangements to J_{H1} , J_{H2} , and J_{H3} . The CD14 gene was amplified from each sample as a control. As expected, the V(D)J signal was lower in pro-B cells than in pre-B cells,

Table 1. Expansion of bone marrow pro-B cells in 4 independently derived mouse lines bearing an $E\mu$ -A1 transgene

Line	N	IgM ⁺ B		Pre-B		Pro-B		Pre-B/Pro-B
		%	Cells ($\times 10^{-6}$)	%	Cells ($\times 10^{-6}$)	%	Cells ($\times 10^{-6}$)	
Wild-type	9	47 \pm 2.0	2.0 \pm 0.93	46 \pm 13	2.5 \pm 0.15	6.7 \pm 2.4	0.41 \pm 0.21	7.4
8	8	41 \pm 8	1.5 \pm 0.61	34 \pm 10	1.3 \pm 0.57	25 \pm 3.4	0.94 \pm 0.44	1.4
6	2	39	ND	42	ND	19	ND	2.3
14	2	58	ND	28	ND	10	ND	2.8
95	5	40 \pm 5.3	ND	47 \pm 7.2	ND	9.8 \pm 3.1	ND	5.5

Bone marrow cells from mice 4 to 8 weeks of age were analyzed using 3-color flow cytometry for the expression of B220, IgM, and CD43. Populations were expressed as a percentage of B220⁺ cells, including IgM⁺ B cells, IgM⁻CD43⁻ pre-B cells, and IgM⁻CD43⁺ pro-B cells. In WT and line 8 mice, absolute cell numbers contained in 2 femurs are also given. Ratios of pre- to pro-B cells are also given. Mean \pm SD are given for the indicated number of mice analyzed, except for lines 6 and 14, in which only 2 mice were studied. ND indicates not done.

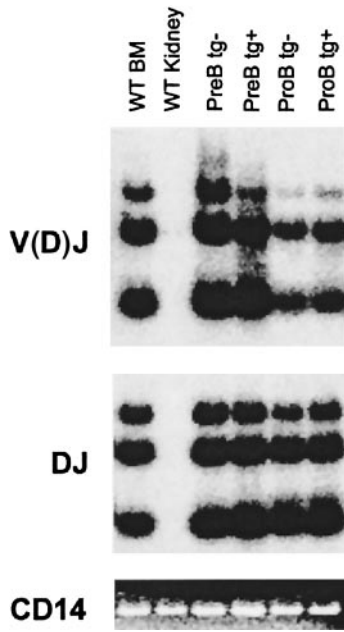


Figure 4. IgH locus rearrangements in pre- and pro-B-cell subsets from E μ -A1 transgenic mice. DNA from IgM⁻B220⁺CD43⁺ and IgM⁻B220⁺CD43⁻ bone marrow populations purified by cell sorting was amplified using PCR for DJ and V(D)J rearrangements under semiquantitative conditions. Southern blots of PCR products were hybridized with internal oligonucleotide probes (see "Materials and methods"). Parallel amplification of CD14 served as a control and was assessed by ethidium bromide staining.

indicating that only a fraction of IgH alleles in the former population had completed rearrangement. There were no significant differences in DJ or V(D)J rearrangements when pro-B cells from wild-type and E μ -A1 transgenic mice were compared, suggesting that rearrangement of the IgH locus was not blocked by the transgene and that pro-B-cell expansion did not represent selective accumulation of cells with completed V(D)J rearrangements of the IgH locus.

Peripheral lymphoid populations were analyzed in line 8 mice (Table 2). We noted a modest but statistically significant decrease in splenic B cells in transgene-positive mice. Similar analyses performed on the other E μ -A1 lines showed no definable difference in peripheral B cell number compared with littermate controls (data not shown). Serum immunoglobulin levels were also analyzed in 6- to 8-week-old line 8 mice and showed a correspondingly modest decrease in mean levels of serum IgG1 and IgG2a but not of IgM (Table 3).

Increased survival of E μ -A1 transgenic thymocytes and B-cell precursors in vitro

Enforced expression of A1 in cell lines leads to enhanced survival in the absence of growth signals or in response to apoptotic

Table 3. Serum immunoglobulin levels in 6- to 8-week-old E μ -A1 transgenic mice and wild-type littermates

	Wild-type (μ g/mL)	E μ -A1 (μ g/mL)
IgM	128 \pm 100	116 \pm 34
IgG1	427 \pm 417	223 \pm 216
IgG2a	114 \pm 72	75 \pm 49

Mean \pm SD for 5 mice tested in each group.

stimuli.³¹ Similar effects are noted when other antiapoptotic Bcl-2 homologs are overexpressed in lymphoid cells in vivo.³²⁻³⁴ To verify the expression of A1 protein in E μ -A1 transgenic lymphoid cells, we studied the survival of thymocytes and bone marrow B-lineage cells. Compared with nontransgenic controls, thymocytes from transgenic animals survived better ex vivo in tissue culture medium and were more tolerant toward death-inducing stimuli, including γ -irradiation (2.5 Gy) and 0.2 μ M dexamethasone (Figure 5A). Similar protective effects were observed with higher doses of γ -irradiation (10 Gy) and dexamethasone (1 μ M) over the same culture period (data not shown). Survival of bone marrow B-lineage cells was studied by in vitro culture, followed by flow cytometric analysis of surviving cells defined by light-scatter characteristics (Figure 5B). In 2 independent experiments, after 11 and 12 days, respectively, substantially more cells survived in the lymphoid gate in transgenic mice. When these events were analyzed, essentially all cells were B220⁺. In wild-type mice, rare surviving B-lineage cells were almost exclusively IgM⁺, whereas in E μ -A1 mice, surface IgM⁻ B-precursor cells and IgM⁺ B cells survived. Short-term in vitro survival assays were also performed on lymph node and spleen cells in which no significant differences were found between wild-type and E μ -A1 transgenic mice (data not shown). These data demonstrate that E μ -A1 transgenic thymocytes and bone marrow B-lineage cells exhibit a survival advantage in vitro, and they suggest that the transgene leads to overexpression of functional A1 protein.

Failure of the E μ -A1 transgene to rescue V(D)J recombination and pre-B cells in SCID mice

In SCID mice, mutation of the *Prkdc* gene, encoding the DNA-dependent protein kinase catalytic subunit, leads to impairment of V(D)J recombination and failure of T- and B-cell development.³⁰ The defect is leaky, and T and B cells accumulate in these mice as they age. E μ -Bcl-2 transgenes expressed in the SCID background lead to rescue of pre-B-cell development, a phenotype that is dependent on functional IgH rearrangement.^{35,36} To determine whether the expression of A1 in SCID B-lineage cells had a similar effect on developmental progression, we introduced the E μ -A1 transgene into the SCID background. The number of B220⁺ cells recovered from both femurs in E μ -A1 SCID mice was comparable to that in SCID littermates (Table 4). Surprisingly, we found no effect on the phenotype of early B-lineage cells in the bone marrow

Table 2. Peripheral lymphoid subsets in E μ -A1 line 8 mice compared with wild-type littermates

	B220 ⁺ IgM ⁺		CD4 ⁺		CD8 ⁺	
	%	Cells ($\times 10^{-6}$)	%	Cells ($\times 10^{-6}$)	%	Cells ($\times 10^{-6}$)
Wild-type spleen	56.0 \pm 6.9	23.0 \pm 9.4	24.0 \pm 7.2	9.0 \pm 5.6	15.0 \pm 5.3	5.4 \pm 2.9
E μ -A1 spleen	49.0 \pm 7.4*	15.0 \pm 5.1*	23.0 \pm 14	6.3 \pm 4.3	17.0 \pm 7.5	4.9 \pm 3.2
Wild-type lymph node	25.0 \pm 5.0	2.2 \pm 1.1	36.0 \pm 13	3.0 \pm 1.5	28.0 \pm 8.9	2.3 \pm 1.2
E μ -A1 lymph node	18.0 \pm 5.5	1.6 \pm 0.71	38.0 \pm 11	3.2 \pm 1.7	33.0 \pm 7.1	2.6 \pm 1.2

Lymph node and spleen cells from 4- to 8-week-old mice were counted and analyzed for the indicated subsets using flow cytometry. Values indicate the average percentage or absolute numbers of cells for the indicated subset (\pm SD) for 6 mice analyzed in each group. For splenic B-cell numbers, the difference is statistically significant. **P* < .02, compared to wild-type.

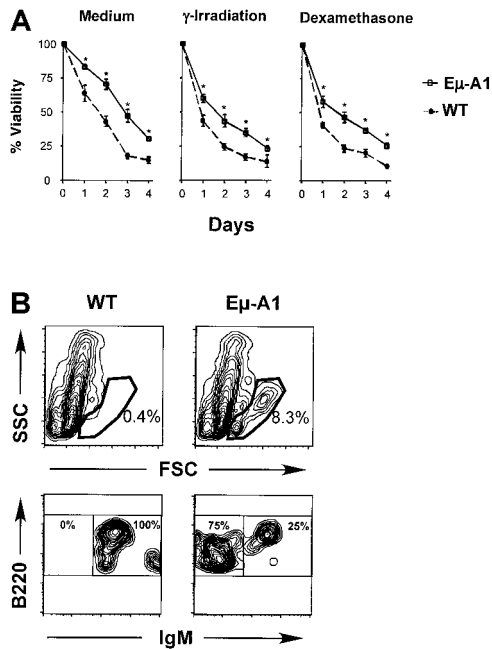


Figure 5. Survival analysis of developing lymphoid cells in E μ -A1 transgenic mice. (A) Thymocytes from E μ -A1 transgenic or wild-type (WT) littermates (3 mice aged 5 weeks in each group) were cultured *in vitro* with medium alone, after γ -irradiation (2.5 Gy), or in the presence of 0.2 μ M dexamethasone. Viability on the indicated days was ascertained by trypan blue exclusion. Representative results from 1 of 2 independent experiments are shown. (B) Survival analysis of B-lineage bone marrow cells. Bone marrow was cultured for 11 days and subjected to flow cytometric analysis for the indicated markers. Analysis is based on 100 000 events. Upper panels show light-scatter parameters on B220⁺ events and gate used to classify viable lymphoid cells. Lower panels show B220 and IgM expression on gated data. Percentages within each gate are shown. Data are representative of 2 experiments (the second was assayed after 12 days), each containing 2 or 3 mice of each genotype.

of transgenic SCID mice (Figure 6A). We next assayed bone marrow cells from SCID and E μ -A1 SCID mice for DJ and V(D)J rearrangements (Figure 6B). Faint DJ signals were seen more strongly in E μ -A1 SCID than in SCID bone marrow, suggesting that there might have been a small difference in the number of cells undergoing the first step of IgH rearrangement in the presence of the E μ -A1 transgene. However, no V(D)J rearrangements were detected in either E μ -A1 SCID or SCID mice. These findings indicate that A1 overexpression does not lead to successful V(D)J rearrangement in SCID pro-B cells or to rescue of pre-B cells as seen in E μ -Bcl-2 SCID mice. Bcl-2 expression in either the SCID or the Rag-2^{-/-} background leads to the accumulation of B220⁺ cells in the spleen.^{35,36} SCID mice expressing the A1 transgene had no such accumulation of B-lineage cells (Table 4).

To understand potential reasons for the developmental delay of pro-B cells in E μ -A1 transgenic mice, pro-B cells arrested at this stage by the SCID defect were examined. Cells at this developmental stage express Rag-1 and Rag-2 endonuclease genes, transcribe

Table 4. Expression of E μ -A1 transgene in the SCID background

	B220 ⁺ cells ($\times 10^{-3}$)	
	Bone marrow	Spleen
SCID	570 \pm 32	940 \pm 940
E μ -A1 SCID	510 \pm 30	570 \pm 210

Bone marrow and spleen cells were analyzed for B220 expression using flow cytometry. Mean absolute cell numbers (\pm SD) are given for 2 femurs or whole spleen from 7 mice of each genotype. Differences between SCID and E μ -A1 SCID groups were not statistically significant.

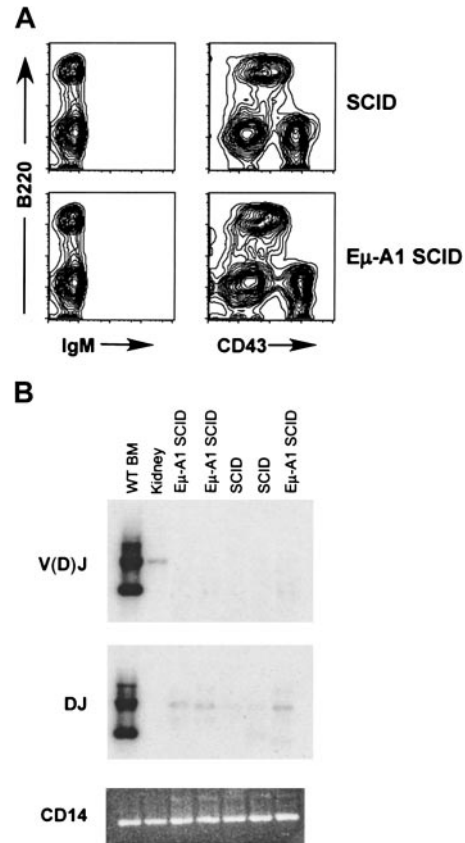


Figure 6. B-lineage development in E μ -A1 SCID mice. (A) Flow cytometric analysis of bone marrow of SCID mice with and without the E μ -A1 transgene. B-lineage cells were IgM⁻ and CD43⁺ and were indistinguishable from nontransgenic SCID littermates. Results are representative of 7 mice analyzed for each genotype. (B) Analysis of IgH DJ and V(D)J rearrangements in SCID and E μ -A1 SCID bone marrow using PCR. A faint DJ rearrangement signal is seen in the E μ -A1 SCID samples, but no V(D)J rearrangements were detected. Wild-type bone marrow and kidney are shown for comparison. The V(D)J signal in the kidney sample likely reflects low levels of lymphoid cells in the organ.

the unrearranged IgH locus, and express pre-B-cell receptor signaling components. After successful IgH rearrangement and expression of C μ protein, pre-B-cell receptor signals lead to proliferation and phenotypic changes that characterize the pre-B-cell compartment. We used semiquantitative RT-PCR to characterize the levels of mRNA for Rag-1, Rag-2, C μ sterile transcripts, and λ 5 in bone marrow from E μ -A1 SCID mice (Figure 7A). Cells at this stage were confirmed to express E μ -A1 transgene mRNA. We identified no effect of A1 overexpression on the level of these early B-cell transcripts, suggesting that the pro-B-cell phenotype in E μ -A1 transgenic mice was not caused by defective expression of these components. Bcl-2 expression has been shown to affect cell-cycle entry, and early B cells in E μ -Bcl-2 mice have reduced proliferation rates.^{37,38} Because defective cell-cycle progression could affect the pro- to pre-B-cell transition, we analyzed pro-B-cell proliferation *in vivo* in E μ -A1 SCID pro-B cells (Figure 7B). We identified no effect of the transgene on the cell cycle profile in this compartment, suggesting that A1 overexpression did not have an overall effect on cell-cycle entry *in vivo*.

Irradiation of newborn SCID mice leads to the partial rescue of thymocyte development, with an increase in thymic cellularity and appearance of CD4⁺CD8⁺ immature thymocytes that bear functional T-cell receptor (TCR)- β rearrangements.³⁹ Because A1, like

Table 5. Rescue of CD4⁺CD8⁺ thymocytes by radiation in SCID and E μ -A1 SCID mice

Group	Genotype	Double positive, %
Experiment 1 (100 cGy, 16 d)	SCID	80
	SCID	0.67
	SCID	0.78
	E μ -A1 SCID	1.7
	E μ -A1 SCID	9.6
Experiment 2 (150 cGy, 12 d)	E μ -A1 SCID	2.1
	SCID	1.3
	SCID	19
	SCID	70
	SCID	91
Experiment 3 (150 cGy, 22 d)	E μ -A1 SCID	66
	SCID	84
	SCID	54
	E μ -A1 SCID	89
	E μ -A1 SCID	12
Control	SCID	0.77 \pm 0.43
	E μ -A1 SCID	0.89 \pm 0.51

Offspring of E μ -A1 SCID \times SCID crosses were irradiated at birth with 100 or 150 cGy. At the indicated interval, thymus and bone marrow were analyzed for lymphoid development. Rescue of double-positive thymocytes was calculated as the percentage of cells in lymphoid scatter gates expressing CD4 and CD8 and is given for individual animals. As controls, 5 mice aged 3 to 5 weeks were used, and values reflect the mean \pm SD for these groups.

other antiapoptotic Bcl-2 homologs, partially protects against apoptosis induced by DNA damage, we assessed whether the E μ -A1 transgene might enhance the ability of radiation to rescue T- or B-cell development in the SCID background (Figure 8, Table 5). Progeny of E μ -A1 SCID \times SCID mouse crosses were irradiated within 3 days of birth. After 12 to 22 days, the thymus and bone marrow were examined for markers of T- and B-cell development. We found that radiation-induced rescue of SCID thymocytes was less efficient than previously reported for SCID mice of a distinct genetic background,³⁹ requiring a higher dose and greater observation time to observe robust rescue of double-positive thymocyte development. The degree of rescue varied from individual to

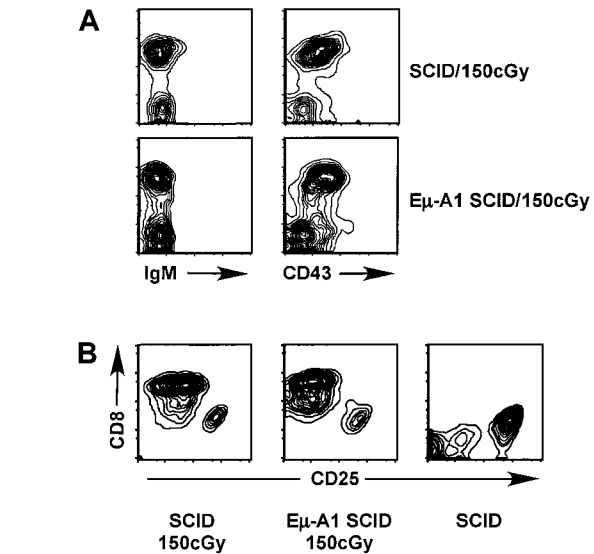


Figure 8. Analysis of B- and T-lymphoid development after irradiation of newborn SCID mice. Mice were analyzed 22 days after irradiation with 150 cGy shortly after birth. (A) Flow cytometric analysis of bone marrow with markers indicated. No rescue of pre-B-cell development was observed. (B) Rescue of CD4⁺CD8⁺ thymocytes, in comparison with unirradiated SCID control. Plots show CD8⁺ cells (which also expressed CD4) in comparison with CD25⁺ prothymocytes, which were negative for both CD4 and CD8.

individual; however, no overall differences were observed between E μ -A1 SCID and SCID littermates. We found no evidence for rescue of pre-B- or B-cell development in SCID mice at any dose or time point examined, and the results were identical in E μ -A1 SCID littermates.

E μ -A1 mice do not develop lymphoid tumors

Overexpression of Bcl-2 in B cells is associated with the development of tumors as mice age.^{32,40} Similarly, overexpression of Mcl-1, another cytoprotective member of the Bcl-2 family, also leads to B-cell tumors.⁴¹ In multiple lines of E μ -A1 transgenic mice followed up for as long as 18 months, no B-cell tumors were observed. One E μ -A1 SCID mouse had thymic lymphoma at age 4 months. These observations suggest that the oncogenic potential for A1 overexpression in lymphoid cells may be less than that for Bcl-2 or Mcl-1.

Discussion

The immune system uses unique forms of targeted genomic instability to randomize parts of the primary sequences of immunoglobulin and TCR genes to create a nearly unlimited repertoire of antigenic specificities. This process generates many out-of-frame or otherwise nonfunctional or deleterious alleles, and selective processes ensure the survival of a primary repertoire of cells with functional and self-tolerant antigen receptors. Further diversification of immunoglobulin genes occurs in B cells during immune responses, requiring additional selection events to ensure survival of the small minority of cells with improved affinity for antigen. These processes illustrate a fundamental aspect of adaptive immunity: survival or death decisions are required on a cell-by-cell basis at several points in immune system development and function. Cell fate decisions in immunity represent a complex integration of

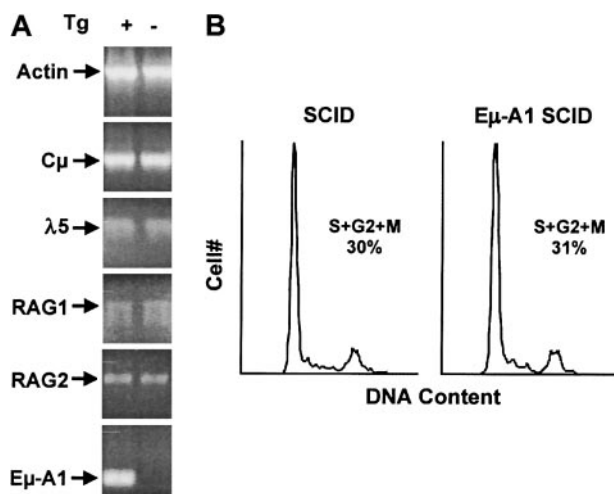


Figure 7. Analysis of bone marrow pro-B cells in SCID and E μ -A1 SCID mice. (A) Expression of mRNA for genes required for pre-B-cell development in 6-week-old mice. Bone marrow RNA was amplified using RT-PCR under semiquantitative conditions. Actin mRNA was amplified in parallel as a loading control. E μ -A1 mRNA transcript is specific for the transgene. (B) Cell-cycle analysis of pro-B cells. Analysis of DNA content by DAPI staining was gated on B220⁺ cells. Percentages of cells in S and G2+M phases of the cell cycle were determined using FlowJo software.

signals delivered by antigen receptors, coreceptors, cytokines, and cell death surface receptor proteins such as Fas. Among the intracellular consequences of several of these signals is the modulation of Bcl-2 family proteins, which may promote or antagonize the activation of downstream apoptotic pathways.^{8,42}

Among the antiapoptotic Bcl-2 homologs, little is known regarding the function of A1 in vivo. Analysis of gene-deficient mice is complicated by the apparent redundancy engendered by the presence in mice of 4 nearly identical A1 genes, 3 of which are expressed.⁴³ Although these animals can be shown to have increased neutrophil and macrophage apoptosis,^{21,44} lack of an apparent phenotype in the lymphoid lineage is difficult to interpret because of gene redundancy. An *A1-a* transgene under the control of the $E\mu/H2K$ expression cassette led to broad overexpression of *A1-a* mRNA in the T- and B-cell lineages (Figure 1), consistent with previous results using these control elements.²² We were unable to detect A1 protein in vivo using antibodies available commercially or antibodies generated in our laboratory that interacted specifically with A1 protein in vitro or using a reagent previously shown¹⁶ to detect A1 in macrophages with highly inducible A1 expression (P.I.C., D.M.W., unpublished observations, January 2001; May 2001). However, we did find evidence of extended in vitro survival of bone marrow B-lineage cells and thymocytes derived from transgenic mice (Figure 5). For thymocytes, these studies indicated that A1 antagonized apoptosis induced not only by ex vivo culture but also by treatment with death agonist dexamethasone and DNA damage induced by γ -irradiation. In thymocytes, the magnitude of apoptosis inhibition by the $E\mu$ -A1 transgene was considerably less than it was in 2 previous studies of transgenic mice with Bcl-2 overexpression in the thymus.^{33,34} These data could reflect differences in protein expression or differences in the relative activity of Bcl-2 and A1 in antagonizing cell death. Taken together, these studies indicate that the $E\mu$ -A1 transgene led to the overexpression of functional A1 protein in the developing B- and T-cell compartments, though the degree of overexpression and potential stage-specific differences cannot be accurately quantified. The fact that the phenotype of pro-B-cell expansion was seen in multiple transgenic lines also offers strong genetic evidence for the expression of the transgene, at least within the affected cellular compartment.

Despite evidence for A1 overexpression in the thymus of $E\mu$ -A1 transgenic mice, we saw no discernible effect on thymic cellularity or composition. Maturation of immature $CD4^+CD8^+$ double-positive T-cell precursors to the $CD4^+$ or $CD8^+$ single-positive stage is largely determined by positive and negative survival signals, which govern the selection of cells bearing major histocompatibility complex-reactive, self-tolerant TCR specificities.^{30,45} Bcl-xL and A1 are both expressed at high levels at the double-positive stage and are down-regulated with maturation, whereas Bcl-2 expression exhibits the reverse pattern.^{9,19,46} The limited thymic phenotype of $E\mu$ -A1 mice is similar to that reported for $E\mu$ -Bcl-2 and $E\mu$ -Bcl-xL mice.^{9,33,34,47-49} Partial inhibition of negative-selection processes and rescue of cells otherwise dying for lack of positive selection has been reported in $E\mu$ -Bcl-2 and $E\mu$ -Bcl-xL mice, suggesting that the modulation of antiapoptotic Bcl-2 homologs may play a role in thymic maturation.^{33,47,50,51} The antiapoptotic effect of these proteins appears to balance the activities of proapoptotic Bcl-2 homologs.^{4,8} For example, mice lacking the proapoptotic homolog Bim display an accumulation of thymocytes in early life and a defect in peripheral lymphoid

homeostasis.⁵² In the thymus, $CD4^+CD8^+$ pre-T cells undergo massive apoptosis in Bcl-xL-deficient mice, implicating Bcl-xL in thymic selection processes.^{10,11} This result also indicates that A1 expression at physiologic levels is not functionally redundant with Bcl-xL at this stage. Despite transgene expression in T- and B-cell lineages, including significant increases in *A1-a* mRNA in peripheral lymphoid tissue, we saw no accumulation of T cells in the periphery of $E\mu$ -A1 transgenic mice. Although we cannot rule out poor A1 protein expression in this cellular subset, these results suggest that enforced A1 expression is insufficient to overcome normal homeostatic control of peripheral T-cell populations, similar to findings in $E\mu$ -Bcl-2 mice with T-lineage expression.^{33,48} In contrast, $E\mu$ -Bcl-xL mice expressing the transgene in the T-cell lineage exhibited 3- to 5-fold increases in lymph node T-cell numbers.⁹

The major phenotype we observed in $E\mu$ -A1 transgenic mice was the expansion of B-cell progenitors at the pro-B-cell stage. This finding was present in multiple independent mouse lines, indicating that it was a function of the transgene per se, independent of variability conferred by insertional effects (Table 1). The central differentiation event within the pro-B-cell compartment is the V(D)J rearrangement of the IgH locus, which, if successful and in-frame, leads to synthesis of the Ig μ protein. Expression of Ig μ in the context of the pre-B-cell receptor complex delivers an intracellular signal that leads to cellular proliferation and maturation to the pre-B-cell stage.³⁰ Differentiation events within the pro-B-cell compartment correlate with distinct cellular subfractions defined by the expression of HSA and BP-1.^{25,29} Within fraction A (HSA⁻BP-1⁻), the IgH locus begins to show initial D-to-J rearrangements. In fraction B (HSA⁺BP-1⁻), DJ rearrangements are seen and V(D)J rearrangements appear at low levels. Fraction C contains cells with functionally rearranged IgH alleles and includes cells that are rapidly cycling and in transition to the pre-B-cell stage. Expansion of pro-B cells in $E\mu$ -A1 mice specifically affected fraction B (Figure 3) and was accompanied by a relative decrease in fraction D (pre-B cells). These findings might be explained in one of 3 ways: (1) a partial block in the pre-B-cell receptor signal; (2) accumulation of a subset of fraction B cells that might otherwise die without progressing to the pre-B-cell stage; or (3) slowing of the V(D)J rearrangement process.

Mice with defective pre-B-cell receptor signals—for example, through mutation of $\lambda 5$ or the Syk tyrosine kinase—accumulate pro-B cells that have completed V(D)J rearrangement of the IgH locus.^{53,54} In contrast, our data indicate that the expanded pro-B-cell pool in $E\mu$ -A1 transgenic mice had normal, low levels of completed V(D)J joins (Figure 4). The pro- to pre-B-cell transition could also be affected if the $E\mu$ -A1 transgene slowed cell-cycle entry that coincides with this event.³⁷ For example, in $E\mu$ -Bcl-2 transgenic mice, the percentage of B-cell precursors in the S+G2+M stages of the cell cycle are substantially diminished. In wild-type mice, cycling pro-B cells were reduced more than 2-fold, whereas in SCID mice, cycling cells were reduced more than 3-fold.³⁸ In contrast, we found no effect of the A1 transgene on cell cycle within the pro-B-cell compartment (Figure 7). Mutational studies suggest that the cell-cycle effects of Bcl-2 can be separated from apoptosis pathways and that they rely on interactions involving the B_H4 domain.⁵⁵ Data from in vitro expression studies suggest that A1 expression does not engender the negative effects on cell cycle seen with Bcl-2.⁵⁶ Our data suggest that the latter finding is also relevant to properties of A1 in vivo.

Fang et al²⁸ found that pro-B cells were expanded in E μ -Bcl-xL transgenic mice, similar to the phenotype observed in E μ -A1 mice. The expanded population of pro-B cells in these mice had increased levels of IgH V(D)J rearrangements and contained an increased frequency of IgH alleles with nonproductive V(D)J rearrangements, leading to the suggestion that pro-B-cell accumulation reflected the survival of cells that had failed to achieve an in-frame IgH rearrangement and that would normally undergo apoptosis. As noted above, the pro-B-cell accumulation in E μ -A1 mice did not reflect a bias toward cells with completed V(D)J joining of IgH alleles (Figure 4), suggesting that this explanation does not apply. A reduction in the efficiency of IgH gene assembly at the pro-B-cell stage could explain the phenotype of E μ -A1 transgenic mice. We did not observe a significant effect of the transgene on the expression of Rag-1 or Rag-2 mRNA or on germline transcription of the IgH locus. However, these data do not exclude subtle effects or differences at the level of Rag protein expression. A final question is whether the apparent block in pro- to pre-B-cell development could simply reflect differences in expression of the A1 transgene in these compartments. Although this is not the expected expression pattern based on the E μ control element, the lack of reagents capable of detecting A1 protein in vivo precludes direct testing of this possibility. However, this scenario would not readily explain the absolute reduction in pre-B cells observed in transgenic mice.

To further investigate the properties of A1 overexpression in pro-B cells, we studied the effects of this transgene in the SCID background. The SCID defect impairs rejoining of coding DNA ends in V(D)J recombination, leading to a developmental block at the pro-B stage that is similar to the developmental block in Rag-1^{-/-} or Rag-2^{-/-} mice, except that lymphoid precursor cells carry Rag-mediated DNA breaks within antigen receptor loci.⁵⁷ The SCID defect is leaky, and these DNA breaks may be repaired by alternative mechanisms, permitting the accumulation of mature T and B cells over time. Bcl-2 family members, including A1, antagonize cell death associated with the induction of DNA breaks. In the SCID background, E μ -Bcl-2 expression leads to a dramatic rescue of pre-B-cell development, a process that involves IgH rearrangement and expression of Ig μ or D μ protein.^{35,36,58} Despite the significant effect of A1 expression on the pro-B-cell subset in the wild-type background, we did not observe an increase in B220⁺CD43⁻ pre-B cells when the transgene was expressed on the SCID background (Figure 6). This result corresponded with a failure to rescue V(D)J joining of the IgH locus. One potential explanation for these results is that Bcl-2 and A1 have different spectrums of activity in early B-lineage cells and that cell death pathways activated by unresolved Rag-mediated DNA breaks could be antagonized better by Bcl-2 than by A1. An alternative explanation for these data could involve differences in the relative expression levels of A1 and Bcl-2 in the different transgenic lines.

Exposure of newborn SCID mice to low levels of γ -radiation leads to partial rescue of TCR- β rearrangement and the appearance of CD4⁺CD8⁺ thymocytes.³⁹ For unknown reasons, similar effects were not observed in the B-cell compartment. The E μ -A1 transgene antagonized cell death in thymocytes exposed to γ -irradiation in vitro (Figure 5); however, there appeared to be no potentiation of the radiation-induced rescue of T-cell development in SCID mice (Figure 6). Similarly, we did not observe the rescue of B-cell development in these animals. The mechanism by which SCID thymocyte development is promoted by radiation remains obscure. One explanation invokes increased rejoining of Rag-mediated

DNA breaks in early thymocytes by an alternative DNA repair pathway up-regulated by radiation.³⁹ However, the radiation of SCID bone marrow cells can also produce similar results, suggesting that the relevant cellular target for this effect may be one that precedes thymic colonization.⁵⁹ If this is the case, such a cell might not express the E μ -A1 transgene.

A1 is normally expressed at low levels in early B cells and is up-regulated in long-lived peripheral B cells, where it may enhance B-cell memory.¹⁸ In contrast, Bcl-2 is expressed in pro-B and mature B cells and is down-regulated at the pre-B-cell and immature B-cell stages, whereas Bcl-xL is expressed in pre-B cells and is down-regulated at the mature B stage.^{12,60,61} A1 and Bcl-xL are up-regulated in response to CD40 signals, by which they appear to contribute to cell survival in the context of B-cell receptor signaling.^{23,62-68} These data suggest that the physiologic role of A1 is more likely to be important in later stages of B-cell function than at the pro-B-cell stage. It is probable that E μ -A1 mice express the transgene in peripheral B cells based on the known properties of E μ -dependent transgenes and on the observed increases in splenic *A1-a* mRNA. Unexpectedly, we observed a decrease in peripheral B cells in E μ -A1 transgenic mice, in contrast to B-cell accumulation reported in E μ -Bcl-2 and E μ -Bcl-xL transgenic mice.^{12,28,32,48} This observation corresponded with a modest decrease in serum immunoglobulin levels of switched subclasses; however, serum immunoglobulin levels in mice continued to increase up to 6 months of age, and it remains unknown whether the E μ -A1 transgene would affect steady state immunoglobulin levels. These observations may reflect the early developmental effects of the transgene in the B-cell lineage rather than indicating a negative effect of A1 overexpression on peripheral B cells.

Bcl-2, Bcl-xL, and A1 share the property of antagonizing cell death. Genetic experiments show that overexpression of Bcl-xL in the T-cell lineage can rescue the Bcl-2 null phenotype in mature T cells,⁴⁹ illustrating the functional overlap in these proteins in vivo. Because the regulation of these proteins differs, the extent to which they may have distinct individual functions remains unclear. Transgenic mice made under the control of similar expression elements permit comparison of the effects of Bcl-2 homologs on the development and function of the immune system. Our studies indicate that the phenotype of E μ -A1 mice most resembles that of E μ -Bcl-xL mice in that the pro-B-cell compartment is strongly affected. However, differences in the IgH rearrangement status of the accumulated pro-B cells suggest that the underlying causes of this phenotype may be different in the 2 strains. In contrast, Bcl-2 appears to have a less prominent effect on the pro-B-cell compartment. Despite these observations, Bcl-2 can rescue the pro- to pre-B-cell transition in SCID mice, whereas A1 does not. Inasmuch as neither the complete spectrum of cellular effects nor the relative activity of antiapoptotic Bcl-2 family members is known, it cannot be ruled out that differences in expression levels among the different transgenic mouse lines reported are responsible for these phenotypic contrasts. However, given the consistency of these phenotypic differences across numerous individual mouse lines, these studies lend further support to the notion that antiapoptotic Bcl-2 homologs interact differentially with intracellular pathways affecting cell fate in lymphoid cells. It is unclear whether all the available data can be accounted for by differences in cell-survival effects of these proteins. Further consideration of the potential roles for Bcl-2 homologs in other cellular pathways are, therefore, warranted in future studies.

References

- Vaux DL, Korsmeyer SJ. Cell death in development. *Cell*. 1999;96:245-254.
- Jacobson MD, Weil M, Raff MC. Programmed cell death in animal development. *Cell*. 1997;88:347-354.
- Adams JM, Cory S. The Bcl-2 protein family: arbiters of cell survival. *Science*. 1998;281:1322-1326.
- Yang E, Korsmeyer SJ. Molecular thanatopsis: a discourse on the BCL2 family and cell death. *Blood*. 1996;88:386-401.
- Nakayama K, Negishi I, Kuida K, Sawa H, Loh DY. Targeted disruption of Bcl-2 alpha beta in mice: occurrence of gray hair, polycystic kidney disease, and lymphocytopenia. *Proc Natl Acad Sci U S A*. 1994;91:3700-3704.
- Nakayama K, Negishi I, Kuida K, et al. Disappearance of the lymphoid system in Bcl-2 homozygous mutant chimeric mice. *Science*. 1993;261:1584-1588.
- Weis DJ, Sorenson CM, Shutter JR, Korsmeyer SJ. Bcl-2-deficient mice demonstrate fulminant lymphoid apoptosis, polycystic kidneys, and hypopigmented hair. *Cell*. 1993;75:229-240.
- Strasser A, O'Connor L, Dixit VM. Apoptosis signaling. *Annu Rev Biochem*. 2000;69:217-245.
- Grillot DA, Merino R, Nunez G. Bcl-XL displays restricted distribution during T cell development and inhibits multiple forms of apoptosis but not clonal deletion in transgenic mice. *J Exp Med*. 1995;182:1973-1983.
- Motoyama N, Wang F, Roth KA, et al. Massive cell death of immature hematopoietic cells and neurons in Bcl-x-deficient mice. *Science*. 1995;267:1506-1510.
- Ma A, Pena JC, Chang B, et al. Bclx regulates the survival of double-positive thymocytes. *Proc Natl Acad Sci U S A*. 1995;92:4763-4767.
- Grillot DA, Merino R, Pena JC, et al. Bcl-x exhibits regulated expression during B cell development and activation and modulates lymphocyte survival in transgenic mice. *J Exp Med*. 1996;183:381-391.
- Yang XF, Weber GF, Cantor H. A novel Bcl-x isoform connected to the T cell receptor regulates apoptosis in T cells. *Immunity*. 1997;7:629-639.
- Mueller DL, Seiffert S, Fang W, Behrens TW. Differential regulation of bcl-2 and bcl-x by CD3, CD28, and the IL-2 receptor in cloned CD4+ helper T cells: a model for the long-term survival of memory cells. *J Immunol*. 1996;156:1764-1771.
- Lin EY, Orlofsky A, Berger MS, Prystowsky MB. Characterization of A1, a novel hemopoietic-specific early-response gene with sequence similarity to bcl-2. *J Immunol*. 1993;151:1979-1988.
- Orlofsky A, Somogyi RD, Weiss LM, Prystowsky MB. The murine antiapoptotic protein A1 is induced in inflammatory macrophages and constitutively expressed in neutrophils. *J Immunol*. 1999;163:412-419.
- Chuang PI, Yee E, Karsan A, Winn RK, Harlan JM. A1 is a constitutive and inducible Bcl-2 homologue in mature human neutrophils. *Biochem Biophys Res Commun*. 1998;249:361-365.
- Tomayko MM, Cancro MP. Long-lived B cells are distinguished by elevated expression of A1. *J Immunol*. 1998;160:107-111.
- Tomayko MM, Punt JA, Bolcavage JM, Levy SL, Allman DM, Cancro MP. Expression of the Bcl-2 family member A1 is developmentally regulated in T cells. *Int Immunol*. 1999;11:1753-1761.
- Karsan A, Yee E, Kaushansky K, Harlan JM. Cloning of human Bcl-2 homologue: inflammatory cytokines induce human A1 in cultured endothelial cells. *Blood*. 1996;87:3089-3096.
- Hatakeyama S, Hamasaki A, Negishi I, Loh DY, Sendo F, Nakayama K. Multiple gene duplication and expression of mouse bcl-2-related genes, A1. *Int Immunol*. 1998;10:631-637.
- Pircher H, Mak TW, Lang R, et al. T cell tolerance to Mlsa encoded antigens in T cell receptor V beta 8.1 chain transgenic mice. *EMBO J*. 1989;8:719-727.
- Craxton A, Chuang PI, Shu G, Harlan JM, Clark EA. The CD40-inducible Bcl-2 family member A1 protects B cells from antigen receptor-mediated apoptosis. *Cell Immunol*. 2000;200:56-62.
- Schlissel MS, Baltimore D. Activation of immunoglobulin kappa gene rearrangement correlates with induction of germline kappa gene transcription. *Cell*. 1989;58:1001-1007.
- Li YS, Hayakawa K, Hardy RR. The regulated expression of B lineage associated genes during B cell differentiation in bone marrow and fetal liver. *J Exp Med*. 1993;178:951-960.
- Leung DT, Morefield S, Willerford DM. Regulation of lymphoid homeostasis by IL-2 receptor signals in vivo. *J Immunol*. 2000;164:3527-3534.
- Willerford DM, Chen J, Ferry JA, Davidson L, Ma A, Alt FW. Interleukin-2 receptor alpha chain regulates the size and content of the peripheral lymphoid compartment. *Immunity*. 1995;3:521-530.
- Fang W, Mueller DL, Pennell CA, et al. Frequent aberrant immunoglobulin gene rearrangements in pro-B cells revealed by a bcl-xL transgene. *Immunity*. 1996;4:291-299.
- Hardy RR, Carmack CE, Shinton SA, Kemp JD, Hayakawa K. Resolution and characterization of pro-B and pre-pro-B cell stages in normal mouse bone marrow. *J Exp Med*. 1991;173:1213-1225.
- Willerford DM, Swat W, Alt FW. Developmental regulation of V(D)J recombination and lymphocyte differentiation. *Curr Opin Genet Dev*. 1996;6:603-609.
- Lin EY, Orlofsky A, Wang HG, Reed JC, Prystowsky MB. A1, a Bcl-2 family member, prolongs cell survival and permits myeloid differentiation. *Blood*. 1996;87:983-992.
- McDonnell TJ, Deane N, Platt FM, et al. Bcl-2 immunoglobulin transgenic mice demonstrate extended B cell survival and follicular lymphoproliferation. *Cell*. 1989;57:79-88.
- Strasser A, Harris AW, Cory S. Bcl-2 transgene inhibits T cell death and perturbs thymic self-censorship. *Cell*. 1991;67:889-899.
- Sentman CL, Shutter JR, Hockenbery D, Kanagawa O, Korsmeyer SJ. Bcl-2 inhibits multiple forms of apoptosis but not negative selection in thymocytes. *Cell*. 1991;67:879-888.
- Strasser A, Harris AW, Corcoran LM, Cory S. Bcl-2 expression promotes B- but not T-lymphoid development in SCID mice. *Nature*. 1994;368:457-460.
- Young F, Mizoguchi E, Bhan AK, Alt FW. Constitutive Bcl-2 expression during immunoglobulin heavy chain-promoted B cell differentiation expands novel precursor B cells. *Immunity*. 1997;6:23-33.
- O'Connor L, Huang DC, O'Reilly LA, Strasser A. Apoptosis and cell division. *Curr Opin Cell Biol*. 2000;12:257-263.
- O'Reilly LA, Harris AW, Tarlinton DM, Corcoran LM, Strasser A. Expression of a bcl-2 transgene reduces proliferation and slows turnover of developing B lymphocytes in vivo. *J Immunol*. 1997;159:2301-2311.
- Danska JS, Pflumio F, Williams CJ, Huner O, Dick JE, Guidos CJ. Rescue of T cell-specific V(D)J recombination in SCID mice by DNA-damaging agents. *Science*. 1994;266:450-455.
- Strasser A, Harris AW, Cory S. E mu-bcl-2 transgene facilitates spontaneous transformation of early pre-B and immunoglobulin-secreting cells but not T cells. *Oncogene*. 1993;8:1-9.
- Zhou P, Levy NB, Xie H, et al. MCL1 transgenic mice exhibit a high incidence of B-cell lymphoma manifested as a spectrum of histologic subtypes. *Blood*. 2001;97:3902-3909.
- Chao DT, Korsmeyer SJ. BCL-2 family: regulators of cell death. *Annu Rev Immunol*. 1998;16:395-419.
- Hamasaki A, Sendo F, Nakayama K, et al. Accelerated neutrophil apoptosis in mice lacking A1-a, a subtype of the bcl-2-related A1 gene. *J Exp Med*. 1998;188:1985-1992.
- Kausalya S, Somogyi R, Orlofsky A, Prystowsky MB. Requirement of A1-a for bacillus Calmette-Guerin-mediated protection of macrophages against nitric oxide-induced apoptosis. *J Immunol*. 2001;166:4721-4727.
- Rothenberg EV. The development of functionally responsive T cells. *Adv Immunol*. 1992;51:85-214.
- Gratiot-Deans J, Ding L, Turka LA, Nunez G. Bcl-2 proto-oncogene expression during human T cell development: evidence for biphasic regulation. *J Immunol*. 1993;151:83-91.
- Strasser A, Harris AW, von Boehmer H, Cory S. Positive and negative selection of T cells in T-cell receptor transgenic mice expressing a bcl-2 transgene. *Proc Natl Acad Sci U S A*. 1994;91:1376-1380.
- Katsumata M, Siegel RM, Louie DC, et al. Differential effects of Bcl-2 on T and B cells in transgenic mice. *Proc Natl Acad Sci U S A*. 1992;89:11376-11380.
- Chao DT, Linette GP, Boise LH, White LS, Thompson CB, Korsmeyer SJ. Bcl-XL and Bcl-2 repress a common pathway of cell death. *J Exp Med*. 1995;182:821-828.
- Tao W, Teh SJ, Melhado I, Jirik F, Korsmeyer SJ, Teh HS. The T cell receptor repertoire of CD4+ thymocytes is altered by overexpression of the BCL-2 protooncogene in the thymus. *J Exp Med*. 1994;179:145-153.
- Chao DT, Korsmeyer SJ. BCL-XL-regulated apoptosis in T cell development. *Int Immunol*. 1997;9:1375-1384.
- Bouillet P, Metcalf D, Huang DC, et al. Proapoptotic Bcl-2 relative Bim required for certain apoptotic responses, leukocyte homeostasis, and to preclude autoimmunity. *Science*. 1999;286:1735-1738.
- Ehlich A, Schaal S, Gu H, Kitamura D, Muller W, Rajewsky K. Immunoglobulin heavy and light chain genes rearrange independently at early stages of B cell development. *Cell*. 1993;72:695-704.
- Cheng AM, Rowley B, Pao W, Hayday A, Bolen JB, Pawson T. Syk tyrosine kinase required for mouse viability and B-cell development. *Nature*. 1995;378:303-306.
- Huang DC, O'Reilly LA, Strasser A, Cory S. The anti-apoptosis function of Bcl-2 can be genetically separated from its inhibitory effect on cell cycle entry. *EMBO J*. 1997;16:4628-4638.
- D'Sa-Eipper C, Chinnadurai G. Functional dissection of Bfl-1, a Bcl-2 homolog: anti-apoptosis, oncogene-cooperation and cell proliferation activities. *Oncogene*. 1998;16:3105-3114.
- Roth DB, Menetski JP, Nakajima PB, Bosma MJ, Gellert M. V(D)J recombination: broken DNA molecules with covalently sealed (hairpin) coding ends in scid mouse thymocytes. *Cell*. 1992;70:983-991.
- Tarlinton DM, Corcoran LM, Strasser A. Continued differentiation during B lymphopoiesis requires signals in addition to cell survival. *Int Immunol*. 1997;9:1481-1494.
- Wang C, Bogue MA, Levitt JM, Roth DB. Irradiation-mediated rescue of T cell-specific V(D)J recombination and thymocyte differentiation in

- severe combined immunodeficient mice by bone marrow cells. *J Exp Med*. 1999;190:1257-1262.
60. Merino R, Ding L, Veis DJ, Korsmeyer SJ, Nunez G. Developmental regulation of the Bcl-2 protein and susceptibility to cell death in B lymphocytes. *EMBO J*. 1994;13:683-691.
61. Choi MS, Holmann M, Atkins CJ, Klaus GG. Expression of bcl-x during mouse B cell differentiation and following activation by various stimuli. *Eur J Immunol*. 1996;26:676-682.
62. Lee HH, Dadgostar H, Cheng Q, Shu J, Cheng G. NF- κ B-mediated up-regulation of Bcl-x and Bfl-1/A1 is required for CD40 survival signaling in B lymphocytes. *Proc Natl Acad Sci U S A*. 1999;96:9136-9141.
63. Kuss AW, Knodel M, Berberich-Siebelt F, Lindemann D, Schimpl A, Berberich I. A1 expression is stimulated by CD40 in B cells and rescues WEHI 231 cells from anti-IgM-induced cell death. *Eur J Immunol*. 1999;29:3077-3088.
64. Fang W, Nath KA, Mackey MF, Noelle RJ, Mueller DL, Behrens TW. CD40 inhibits B cell apoptosis by upregulating bcl-xL expression and blocking oxidant accumulation. *Am J Physiol*. 1997;272:C950-C956.
65. Ishida T, Kobayashi N, Tojo T, Ishida S, Yamamoto T, Inoue J. CD40 signaling-mediated induction of Bcl-XL, Cdk4, and Cdk6: implication of their cooperation in selective B cell growth. *J Immunol*. 1995;155:5527-5535.
66. Merino R, Grillot DA, Simonian PL, et al. Modulation of anti-IgM-induced B cell apoptosis by Bcl-xL and CD40 in WEHI-231 cells: dissociation from cell cycle arrest and dependence on the avidity of the antibody-IgM receptor interaction. *J Immunol*. 1995;155:3830-3838.
67. Choi MS, Boise LH, Gottschalk AR, Quintans J, Thompson CB, Klaus GG. The role of bcl-XL in CD40-mediated rescue from anti- μ -induced apoptosis in WEHI-231 B lymphoma cells. *Eur J Immunol*. 1995;25:1352-1357.
68. Grumont RJ, Rourke IJ, Gerondakis S. Rel-dependent induction of A1 transcription is required to protect B cells from antigen receptor ligation-induced apoptosis. *Genes Dev*. 1999;13:400-411.