

# Flt3 ligand therapy for recipients of allogeneic bone marrow transplants expands host CD8 $\alpha^+$ dendritic cells and reduces experimental acute graft-versus-host disease

Takanori Teshima, Pavan Reddy, Kathleen P. Lowler, Mark A. KuKuruga, Chen Liu, Kenneth R. Cooke, and James L. M. Ferrara

Recent evidence suggests that dendritic cells (DCs) can regulate and amplify immune responses. Flt3 ligand (FL)-derived DC function was tested as a stimulator of allogeneic lymphocytes *in vitro* and *in vivo*. Treatment of mice with FL dramatically expanded DC number, but DCs isolated from FL-treated mice (FL DCs) were poor stimulators of allogeneic T-cell responses *in vitro*. Further activation of FL

DCs did not restore their stimulatory ability, and FL DCs did not suppress the stimulation of the allogeneic T cells by normal DCs. FL treatment significantly increased the CD8 $\alpha^+$  DC subset, which appeared to be the reason for their poor stimulatory capacity. These observations were confirmed *in vivo* using a mouse model of acute graft-versus-host disease (GVHD) wherein host DCs play a critical

role. FL treatment of recipients before allogeneic bone marrow transplantation dramatically suppressed donor T-cell responses to host antigens, thereby reducing GVHD mortality ( $P < .01$ ). These data represent a novel strategy that alters host DCs and reduces acute GVHD. (Blood. 2002;99:1825-1832)

© 2002 by The American Society of Hematology

## Introduction

Flt3 ligand (FL) stimulates the proliferation of hematopoietic progenitor cells through binding to the FL receptor, which is restricted to cells of hematopoietic origin.<sup>1-3</sup> Tissues in FL-treated mice display dramatic increases in DCs of multiple organs, including spleen, lymph nodes, blood, thymus, liver, lungs, Peyer patches, and bone marrow.<sup>4,5</sup> Therefore, FL has been proposed as a means to boost protective immunity against several diseases including cancer and infectious agents. FL can augment immunologic responses,<sup>6-14</sup> but it can also induce tolerance.<sup>15</sup>

Dendritic cells (DCs) are centrally involved in the initiation of T-cell-dependent immune responses. In mouse spleens, at least 2 major subpopulations of DCs have been described, CD8 $\alpha^+$  and CD8 $\alpha^-$ , which differ in their phenotype and in certain regulatory features. CD8 $\alpha^+$  DCs stimulate allogeneic CD4 $^+$  and CD8 $^+$  T cells less efficiently than CD8 $\alpha^-$  DCs in mixed lymphocyte reaction (MLR) *in vitro*,<sup>16-18</sup> and studies suggest that CD8 $\alpha^+$  DCs may regulate the alloresponses of CD4 $^+$  T cells by Fas/Fas ligand (FasL)-induced apoptosis<sup>16</sup> and of CD8 $^+$  T cells by limiting their interleukin-2 (IL-2) production.<sup>17</sup> The regulatory capacity of CD8 $\alpha^+$  DCs is further supported by a recent report that CD8 $\alpha^+$  DCs may play a critical role in the maintenance of peripheral tolerance to self-reactive T cells.<sup>19</sup> However, such regulatory functions of CD8 $\alpha^+$  DCs are controversial and are yet to be established *in vivo*.

Given the controversy regarding FL effects on DCs and their control of immune responses, we evaluated FL for its effects on DCs of allogeneic T-cell responses as stimulators. We show that FL DCs, though increased in number, only weakly stimulate allogeneic T-cell responses *in vitro*, and this reduction is correlated with large increases in the CD8 $\alpha^+$  DC subset. We confirmed the physiologic

importance of these observations using a mouse model of acute graft-versus-host disease (GVHD), in which systemic administration of FL to recipients before bone marrow transplantation (BMT) dramatically expanded DCs but suppressed donor T-cell responses to host antigens, resulting in significantly less GVHD.

## Materials and methods

### Mice

Female C57BL/6 (B6, H-2<sup>b</sup>, CD45.2<sup>+</sup>), B6D2F1 (H-2<sup>b/d</sup>, CD45.2<sup>+</sup>), B6.Ly-5a (H-2<sup>b</sup>, CD45.1<sup>+</sup>), and B6.129P2-*Il10<sup>tm1Cgn</sup>* (IL-10<sup>-/-</sup>, H-2<sup>b</sup>) mice were purchased from the Jackson Laboratories (Bar Harbor, ME). The age range of mice used as BMT recipients was between 11 and 16 weeks.

### Flt3 ligand treatment

Mice were injected subcutaneously once daily with 10  $\mu$ g recombinant human FL (kindly provided by Immunex, Seattle, WA) for 8 consecutive days.

### Isolation of DCs

Spleens were injected with 0.5 mL collagenase D (1 mg/mL; Boehringer Mannheim, Indianapolis, IN) per spleen, cut into small pieces, and incubated for 45 minutes at 37°C. The resultant digested tissue suspension was teased through a 70- $\mu$ m filter, centrifuged, and washed twice. In some experiments, cells were cultured overnight at 37°C and 5% CO<sub>2</sub> in plastic tissue culture dishes to remove adherent macrophages. Next, the nonadherent cells were collected, resuspended in 1.035 g/mL Percoll (Pharmacia Biotech, Uppsala, Sweden), and underlain with an equivalent volume of 1.075 g/mL Percoll.<sup>20</sup> After centrifugation, the resultant band was harvested

From the Departments of Internal Medicine and Pediatrics, University of Michigan Cancer Center, Ann Arbor; and the Department of Pathology, Immunology, and Laboratory Medicine, University of Florida, Gainesville.

Submitted August 2, 2001; accepted October 18, 2001.

Supported by National Institutes of Health grants CA39542 (J.L.M.F.) and HL03565-05 (K.C.).

**Reprints:** James L. M. Ferrara, Department of Internal Medicine, University of Michigan Cancer Center, 1500 E Medical Center Dr, Ann Arbor, MI 48109-0942; e-mail: ferrara@umich.edu.

The publication costs of this article were defrayed in part by page charge payment. Therefore, and solely to indicate this fact, this article is hereby marked "advertisement" in accordance with 18 U.S.C. section 1734.

© 2002 by The American Society of Hematology

and washed twice, and DCs were isolated by using CD11c (N418) MicroBeads and the autoMACS (Miltenyi Biotec, Bergisch Gladbach, Germany). In some experiments, these DCs were further separated according to their CD8 $\alpha^+$  expression, and 2 populations (CD11c $^+$  CD8 $\alpha^+$  and CD11c $^+$  CD8 $\alpha^-$ ) were sorted on a FACS Vantage SE cell sorter (Becton Dickinson, San Jose, CA).

### Flow cytometric analysis

Monoclonal antibodies (mAbs) used were fluorescein isothiocyanate (FITC)-, phycoerythrin-, or allophycocyanin (APC)-conjugated anti-mouse CD45.1, CD3 $\epsilon$ , CD8 $\alpha$ , CD11b, CD11c (HL3), CD25, CD40, CD49, CD80, CD86, and I-A $^b$  (BD PharMingen, San Diego, CA). Cells were preincubated with mAbs 2.4G2 (rat anti-mouse Fc $\gamma$ R mAbs) for 15 minutes at 4°C to block nonspecific Fc $\gamma$ R binding of labeled antibodies and then incubated with the relevant mAbs for 30 minutes at 4°C. Finally, cells were washed twice with 0.2% bovine serum albumin in phosphate-buffered saline, fixed with 1% paraformaldehyde in phosphate-buffered saline, and analyzed by EPICS Elite ESP cell sorter (Beckman-Coulter, Miami, FL). Irrelevant IgG $_{2a/b}$  mAbs were used as a negative control. Ten thousand live events were acquired for analysis.

### Cell culture

Splenic T cells were purified by passage through nylon wool columns (Polysciences, Warrington, PA) and then used as responders at  $1 \times 10^5$  cells/well, together with graded numbers of irradiated (20 Gy) freshly isolated DCs. Percentages of CD11 $^+$  cells in the DC fraction were determined by flow cytometric analysis, and CD11c $^+$  DC number was adjusted before placement in culture. Cultures were maintained in 10% heat-inactivated fetal calf serum in complete Dulbecco modified essential medium at 37°C in 7.5% CO $_2$ . After 1 to 5 days of culture, supernatants were harvested from the culture for cytokine measurement, and cells were pulsed with  $^3\text{H}$ -thymidine (1  $\mu\text{Ci}$  [0.037 MBq] per well) for an additional 16 hours. Proliferation was determined on a TopCount NTX (Packard Instrument, Meriden, CT).

### Enzyme-linked immunosorbent assay

Enzyme-linked immunosorbent assay (ELISA) for interferon (IFN)- $\gamma$ , IL-2, IL-4, IL-10, tumor necrosis factor- $\alpha$  (BD PharMingen), and IL-12 p70 (R&D Systems, Minneapolis, MN) were performed according to the manufacturer's protocol. Briefly, samples were diluted 1:1 to 1:4, and each cytokine was captured by the specific primary mAbs and detected by biotinylated secondary mAbs. Assays were developed with avidin-horseradish peroxidase and substrate. Plates were read at 450 nm using a MAXLine microplate reader (Molecular Devices, Sunnyvale, CA). Samples and standards were run in duplicate, and the sensitivity of the assays was 31.3 pg/mL for IFN- $\gamma$ , 3.1 pg/mL for IL-2, 7.8 pg/mL for IL-4, 31.3 pg/mL for IL-10, 15.6 pg/mL for tumor necrosis factor- $\alpha$ , and 7.8 pg/mL for IL-12 p70.

### Bone marrow transplantation

Before transplantation, recipient mice were pretreated with either FL (10  $\mu\text{g}/\text{d}$ ) or diluent for 8 consecutive days (days -9 to -2). Mice then received transplants according to a standard protocol as described previously.<sup>21</sup> Briefly, on day 0, mice received 12 to 13 Gy total body irradiation (TBI) (cesium Cs 137 source) split into 2 doses, separated by 3 hours to minimize gastrointestinal toxicity. Then  $5 \times 10^6$  BM cells and  $2.5 \times 10^6$  nylon wool purified splenic T cells resuspended in 0.25 mL were injected intravenously into recipients. For analysis of cell division, nylon wool-purified splenic T cells were labeled with carboxy fluorescein diacetate-succinimidyl ester (CFSE; Molecular Probes, Eugene, OR) and were transferred into irradiated recipients. In some experiments, BMT recipients were treated with 200  $\mu\text{g}$  NK1.1 mAbs (clone PK134) on days -2 and -1 of BMT to eliminate natural killer (NK) cells.<sup>22</sup> Mice were housed in sterilized micro-isolator cages; they received autoclaved hyper-chlorinated drinking water for the first 3 weeks after BMT and filtered water thereafter.

### Systemic and histopathologic analysis of acute GVHD

Survival after BMT was monitored daily, and the degree of clinical GVHD was assessed weekly by a scoring system that sums changes in 5 clinical parameters: weight loss, posture, activity, fur texture, and skin integrity (maximum index, 10) as previously described.<sup>23</sup> This index is a more sensitive index of acute GVHD severity than weight loss alone, a parameter that has been found to be reliable indicator of systemic GVHD in multiple murine models. Acute GVHD was also assessed by detailed histopathologic analysis of liver, a primary GVHD target organ. Sections of liver (right lobe) were fixed in 10% buffered formalin. Specimens were then embedded in paraffin, cut into 5- $\mu\text{m}$ -thick sections, and stained with hematoxylin and eosin for histologic examination. Slides were coded without reference to prior treatment and were examined systematically by a single pathologist using a semiquantitative scoring system as previously described.<sup>24</sup>

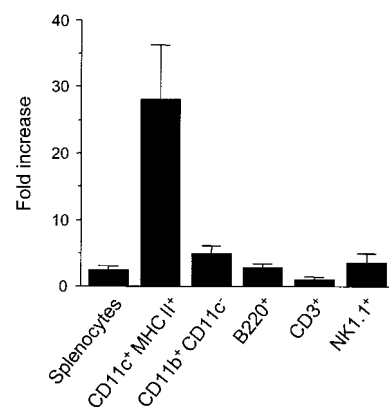
### Statistical analysis

Survival curves were plotted using Kaplan-Meier estimates. The Mann-Whitney  $U$  test was used for the statistical analysis of in vitro data and clinical GVHD scores, whereas the Mantel-Cox log rank-test was used to analyze survival data.  $P < .05$  was considered statistically significant.

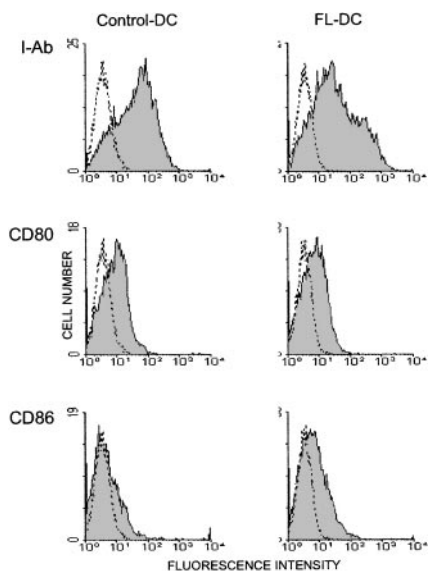
## Results

### FL administration preferentially expands resting DCs

Mice were injected with 10  $\mu\text{g}$  FL or diluent for 8 days, and their splenocytes were analyzed by a flow cytometry. Mice treated with FL showed a 2.4-fold increase in overall cellularity in spleen with a dramatic 28.2-fold increase in the absolute number of CD11c $^+$  major histocompatibility complex (MHC) class II $^+$  cells ( $75.6 \pm 15.5 \times 10^6/\text{spleen}$ ) (Figure 1). In addition, numbers of CD11b $^+$  CD11c $^-$  macrophages, B220 $^+$  B cells, and NK1.1 $^+$  cells were increased by 5.0-, 2.8-, and 3.9-fold, respectively, as previously shown,<sup>4</sup> though the number of CD3 $^+$  cells was unaffected. To determine the effects of FL on DC activation, splenic DCs were gated according to forward versus side scatter and CD11c positivity, and their surface antigen expression was analyzed by 2-color immunofluorescence. Freshly isolated control DCs and FL DCs displayed a resting, nonactivated phenotype, as evidenced by low levels of surface MHC class II, CD80, and CD86 (Figure 2).



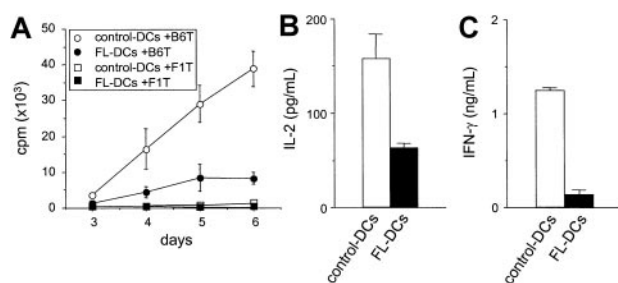
**Figure 1. Cell expansion in spleens from FL-treated mice.** Mice were treated with 10  $\mu\text{g}$  FL or diluent for 8 days. Spleens were harvested, and splenocytes were phenotyped by flow cytometry as DCs (CD11c $^+$  MHC class II $^+$ ), macrophages (CD11b $^+$  CD11c $^-$ ), B cells (B220 $^+$ ), T cells (CD3 $^+$ ), and NK cells (NK1.1 $^+$ ). Fold-increase is the ratio of the number of cells from FL-treated mice to control mice, and mean  $\pm$  SD of fold increase was shown from 4 experiments.



**Figure 2. Freshly isolated DCs in spleens from FL-treated mice show resting phenotype.** DCs were freshly isolated from spleens as in Figure 1, and 2-color flow cytometric analysis was performed. Gray histograms indicate Ag-specific antibodies; transparent histograms, isotype controls. Data are representative of 3 separate experiments.

#### FL DCs are poor stimulators of allogeneic T cells

We next compared FL DCs to control DCs as stimulators of T-cell responses in an allogeneic MLR. As shown in Figure 3A, FL DCs were less effective stimulators than control DCs throughout the culture period. Similar results were obtained at different T/DC ratios and in other allogeneic responder–stimulator combinations (data not shown). Levels of IL-2 and IFN- $\gamma$ , critical cytokines secreted during allogeneic T-cell responses, were also decreased in the supernatants of MLR cultures stimulated with FL DCs (Figure 3B-C). Neither IL-4 nor IL-10 was detected in any of the supernatants. Immature DCs can induce tolerance by generating IL-10–producing regulatory T (Tr1) cells in an IL-10–dependent fashion.<sup>25,26</sup> Therefore, T cells from IL-10 $^{-/-}$  mice were used as responders in MLR. However, T-cell proliferation from IL-10 $^{-/-}$  mice and wild-type mice were equally impaired in culture with FL DCs (data not shown), ruling out IL-10 production by Tr1 cells as a mechanism for the lack of response.



**Figure 3. Impaired allostimulatory activity of FL DCs in MLR.** (A) Five thousand irradiated DCs isolated from B6D2F1 mice were cultured with  $10^5$  T cells from either B6 (allogeneic) or B6D2F1 (syngeneic) mice as described in "Materials and methods." T-cell proliferation was determined by  $^3\text{H}$ -thymidine incorporation. Allogeneic T-cell responses to control DCs (open circle) and to FL DCs (closed circle) and syngeneic T-cell responses to control DCs (open square) and to FL DCs (closed square) are shown. Data are the mean  $\pm$  SD of quadruplicate cultures. (B, C) Supernatants of cultures with control DCs (open bar) or with FL DCs (closed bar) were collected at 24 hours for IL-2 (B) and at 72 hours for IFN- $\gamma$  (C) and measured by ELISA as described in "Materials and methods."

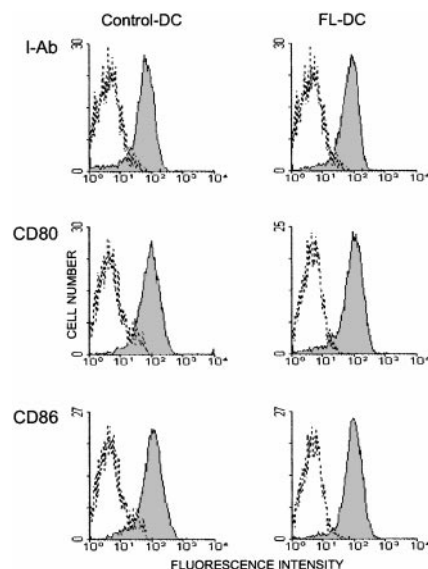
#### Allostimulatory activity of FL DCs remains impaired after maturation in culture

To determine whether the impaired allostimulatory function of FL DCs was caused by the expansion of immature DCs, we examined the ability of overnight culture, which can drive maturation,<sup>27,28</sup> to restore the allostimulatory capacity of FL DCs. Overnight culture induced comparable phenotypic maturation in FL DCs and control DCs as characterized by increased expression of MHC class II, CD80, and CD86 (Figure 4). This phenotypic maturation correlated with an increased ability of cultured control DCs to stimulate proliferation and cytokine secretion of allogeneic T cells in MLR (Figure 5, Figure 3). By contrast, cultured FL DCs remained poor stimulators of all allogeneic T-cell responses. Thus, the impaired allostimulatory function of FL DCs could not be explained by reduced expression of costimulatory molecules on their surfaces.

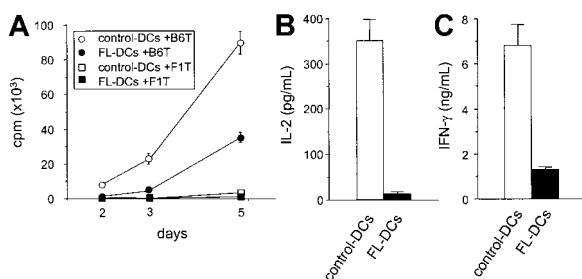
Because APCs can inactivate T cells with which they interact through a veto function,<sup>29</sup> we next tested FL DCs for such inhibitory activity by adding graded numbers of FL DCs to control DCs in an allogeneic MLR. FL DCs did not inhibit the stimulation of allogeneic T cells by control DCs, but they showed an additive stimulatory capacity, ruling out possible veto activity (Figure 6).

#### FL preferentially expands CD8 $\alpha^+$ DCs with less capacity of allostimulation

Because the CD8 $\alpha^+$  DC subset stimulates allogeneic T cells less efficiently than CD8 $\alpha^-$  DCs in MLR in vitro,<sup>16-18</sup> we next investigated the effect of FL administration on these DC subsets. As shown in Figure 7, FL preferentially expanded CD8 $\alpha^+$  DCs. The number of CD8 $\alpha^+$  DCs was  $50.9 \pm 7.4 \times 10^6/\text{spleen}$  (46-fold higher than control mice), and the number of CD8 $\alpha^-$  DCs was  $33.7 \pm 19.3 \times 10^6/\text{spleen}$  (19-fold higher than control mice). The ratio of CD8 $\alpha^+$  to CD8 $\alpha^-$  DCs increased 3.0-fold ( $1.51 \pm 0.74$  vs  $0.47 \pm 0.06$ ;  $P < .01$ ). CD8 $\alpha^+$  DCs express low levels of CD11b on their surfaces in contrast to the high levels detected on CD8 $\alpha^-$  DCs.<sup>4,30</sup> FL treatment also increased the ratio of CD11b $^-$  to CD11b $^+$  DCs by 3.3-fold (Figure 7), showing that the increase in CD8 $\alpha^+$  DC number was not attributed to an isolated up-regulation of CD8 $\alpha$  on the cell surface but rather to an expansion of the



**Figure 4. Overnight culture activates DCs.** DCs were isolated from spleens after overnight culture, and 2-color flow cytometric analysis was performed. Data are representative of 2 experiments. Histogram shades are as in Figure 2.

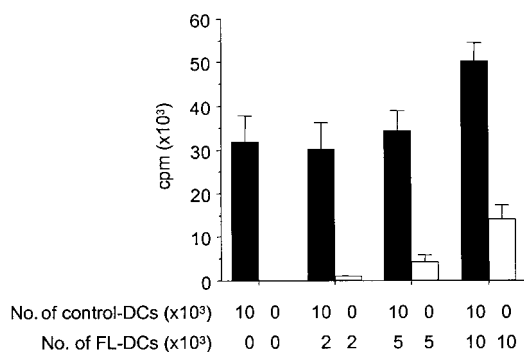


**Figure 5. Phenotypically mature FL DCs retain impaired allostimulatory activity.** DCs from FL or control mice were cultured overnight as in Figure 4 and used in MLR as in Figure 3. (A) Five thousand DCs isolated from B6D2F1 mice were cultured with  $10^5$  T cells isolated from either B6 (allogeneic) or B6D2F1 (syngeneic) mice. T-cell proliferation was determined by  $^3\text{H}$ -thymidine incorporation. Allogeneic T-cell responses to control DCs (open circle) and to FL DCs (closed circle) and syngeneic T-cell responses to control DCs (open square) and to FL DCs (closed square) are shown. Data are the mean  $\pm$  SD of quadruplicate cultures. Supernatants were collected at 24 hours for IL-2 (B) and at 72 hours for IFN- $\gamma$  (C) and were measured by ELISA, as described in "Materials and methods."

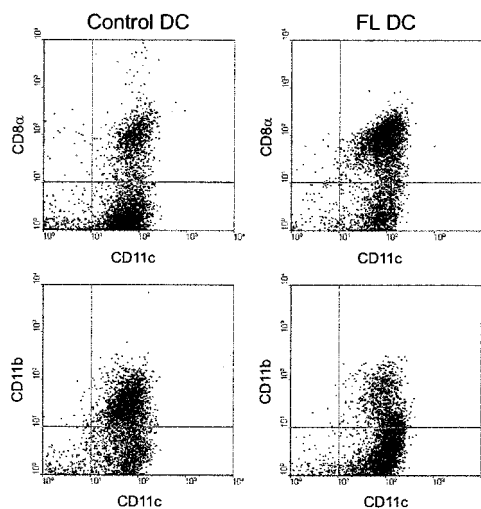
$\text{CD8}\alpha^+$  DC subset. When stimulated with a combination of *Staphylococcus aureus* Cowan I and granulocyte macrophage-colony-stimulating factor (as well as various combinations of cytokines including IFN- $\gamma$  and IL-4),  $\text{CD8}\alpha^+$  DCs consistently produced 10-fold more IL-12 p70 than  $\text{CD8}\alpha^-$  DCs (data not shown), in agreement with previously published reports.<sup>30-32</sup>

#### Comparative allostimulatory activity of sorted $\text{CD8}\alpha^+$ and $\text{CD8}\alpha^-$ DCs

We next compared the ability of isolated  $\text{CD8}\alpha^+$  DCs to  $\text{CD8}\alpha^-$  DC subsets to stimulate the allogeneic T cells in vitro. Freshly isolated control DCs and FL DCs were sorted according to their  $\text{CD8}\alpha^+$  expression, and reanalysis of the sorted cell populations confirmed greater than 98% purity of each subset. In culture, freshly isolated  $\text{CD8}\alpha^-$  DCs were more efficient stimulators of allogeneic T cells than  $\text{CD8}\alpha^+$  DCs in MLR (Figure 8A), as previously described.<sup>16,17,33,34</sup> Of importance, each subclass of FL DCs and control DCs stimulated T-cell proliferation to an identical degree (Figure 8A). Furthermore, when  $\text{CD8}\alpha^+$  and  $\text{CD8}\alpha^-$  fractions sorted from control DCs were mixed at the same ratio as that found in splenocytes from mice treated with FL ( $\text{CD8}\alpha^+/\text{CD8}\alpha^-$ , 7:3), the allostimulatory capacity of the control DC mixture was equivalent to the FL DC mixture (Figure 8B). Similarly, when a ratio of  $\text{CD8}\alpha^+$  to  $\text{CD8}\alpha^-$  DCs in spleens from FL-treated mice was changed to that found in control spleens,

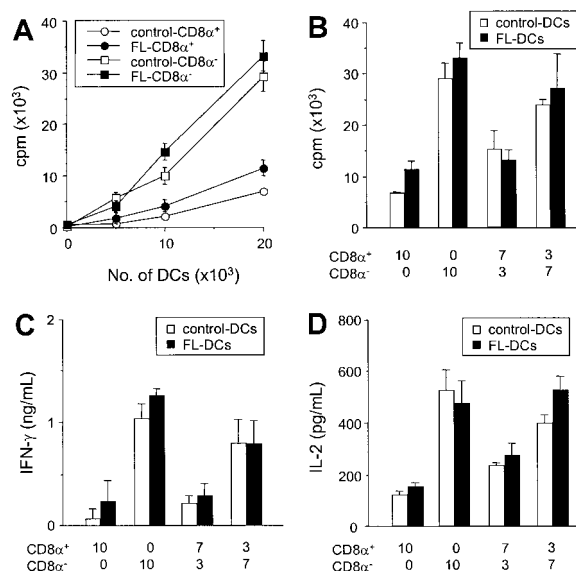


**Figure 6. FL DCs do not inhibit alloresponses of control DCs.** B6 T cells ( $1 \times 10^5$ ) were stimulated with DCs from B6D2F1 in MLR. Graded numbers of FL DCs were added to constant numbers of control DCs at the initiation of culture. Allogeneic T-cell proliferation with control DCs admixed with graded numbers of FL DCs (solid bar) or with graded numbers of FL DCs only (open bar) was determined by  $^3\text{H}$ -thymidine incorporation. Data represent mean  $\pm$  SD of quadruplicate cultures.

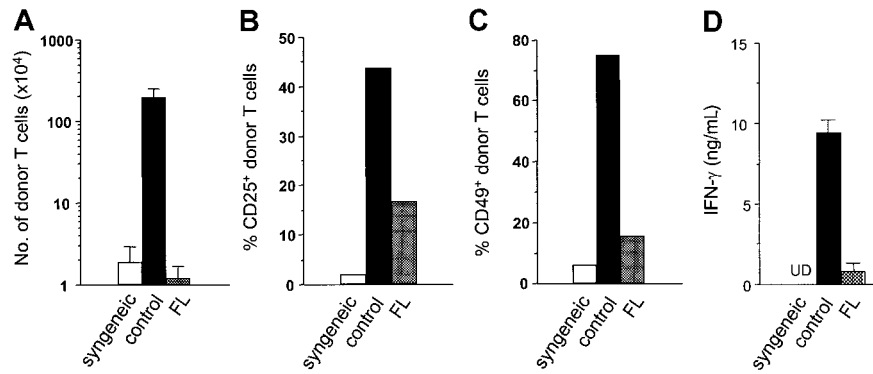


**Figure 7. Preferential expansion of  $\text{CD8}\alpha^+$  DCs by FL treatment.** DCs were isolated from spleens and were stained with anti-CD11c-phycoerythrin and anti- $\text{CD8}\alpha$ -FITC or anti-CD11b-FITC, as described in "Materials and methods." Results are representative of 5 replicate experiments.

( $\text{CD8}\alpha^+/\text{CD8}\alpha^-$ , 3:7), the allostimulatory capacity of the mixture was equivalent in FL-treated DCs and controls. Similarly, IFN- $\gamma$  and IL-2 production from MLRs using  $\text{CD8}\alpha^-$  DCs was greater than that in cultures using  $\text{CD8}\alpha^+$  DCs (Figure 8C-D). For all ratios at which the  $\text{CD8}\alpha^+$  and  $\text{CD8}\alpha^-$  fractions from FL DCs or control DCs were compared, IFN- $\gamma$  and IL-2 production were identical in each treatment group. Neither IL-4 nor IL-10 was detected in any supernatant. Thus, the impaired allostimulatory activity of FL DCs in MLR was caused primarily by the increased numbers of  $\text{CD8}\alpha^+$  DCs produced by FL administration.



**Figure 8. FL treatment does not change allostimulatory functions of  $\text{CD8}\alpha^+$  and  $\text{CD8}\alpha^-$  DC subclasses.** (A) Allogeneic B6 T cells were cultured with various numbers of each DC subset isolated from FL- and control-treated mice. T-cell responses to  $\text{CD8}\alpha^+$  (open circle) and  $\text{CD8}\alpha^-$  (open square) DCs from control-treated mice and responses to  $\text{CD8}\alpha^+$  (closed circle) and  $\text{CD8}\alpha^-$  (closed square) DCs from control-treated mice were determined after 3-day MLR by  $^3\text{H}$ -thymidine incorporation. Data shown are the mean  $\pm$  SD of quadruplicate cultures. (B-D) Sorted  $\text{CD8}\alpha^+$  and  $\text{CD8}\alpha^-$  fractions from control DCs (open bar) or FL DCs (closed bar) were mixed at various ratios and cultured with allogeneic T cells from B6 mice for 3 days. Cells were then pulsed with  $^3\text{H}$ -thymidine for the last 16 hours of culture, and proliferation was determined (B). Supernatant was collected 48 hours after culture for IFN- $\gamma$  measurement (C) and IL-2 measurement (D) by ELISA.



**Figure 9. Pretreatment of recipient mice with FL inhibits donor T-cell activation and expansion to host antigens.** B6D2F1 (CD45.2<sup>+</sup>) mice were pretreated with either 10  $\mu$ g/d FL or control diluent from day -8 to day -2, followed by 13 Gy TBI and adoptive transfer of T cells from B6Ly5.2 (CD45.1<sup>+</sup>) donor mice. Syngeneic control B6 (CD45.2<sup>+</sup>) mice received B6Ly5.2 (CD45.1<sup>+</sup>) T cells. Spleens were harvested from recipients after transfer of allogeneic T cells in control-treated (dark bar) and FL-treated (hatched bar) animals or transfer of syngeneic T cells (open bar). (A) Number of donor T cells (CD45.1<sup>+</sup> CD3<sup>+</sup>) was determined by 2-color flow cytometric analysis of splenocytes on day 4. (B, C) Expression of activation markers was determined by the percentage of CD25<sup>+</sup> (B) and CD49<sup>+</sup> (C) on donor T cells (CD3<sup>+</sup> CD45.1<sup>+</sup>) in spleens on day 4. (d) Serum IFN- $\gamma$  levels were determined in peripheral blood obtained from animals 4 days after adoptive transfer. (A-D) Data represent mean value  $\pm$  SD of 3 mice. UD indicates undetected.

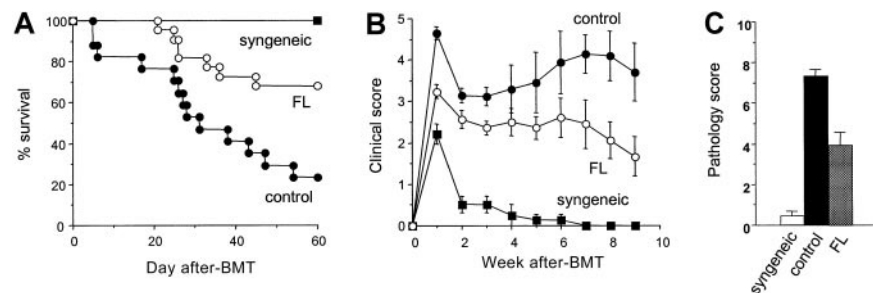
**Expansion of host-type DCs by the administration of FL inhibits early donor T cell expansion and activation during a GVH reaction**

In a final set of experiments, we investigated the in vivo relevance of these in vitro findings using a mouse model of GVHD, wherein host-derived DCs play a critical role. B6D2F1 (H-2<sup>b/d</sup>, CD45.2<sup>+</sup>) mice were pretreated with either FL (10  $\mu$ g/d) or diluent for 8 consecutive days before allogeneic BMT (days -9 to -2). On day 0, mice received  $2.5 \times 10^6$  nylon wool-purified splenic T cells from allogeneic B6.Ly-5a (H-2<sup>b</sup>, CD45.1<sup>+</sup>) donor mice after 13 Gy TBI. Four days after TBI, host-derived DCs (CD45.2<sup>+</sup> CD11c<sup>+</sup>) were undetectable in spleens of mice receiving control diluent, whereas  $6.8 \times 10^4$  DCs were detected in FL-treated recipients; by day 6, these DCs had disappeared from the spleen. Donor T-cell (CD45.1<sup>+</sup> CD3<sup>+</sup>) expansion was evaluated in spleens on day 3 after transfer, when they responded to differences in MHC class I and MHC class II and multiple minor histocompatibility antigens of the host. Despite the marked increase of DCs in recipients by the administration of FL before BMT, allogeneic donor T-cell expansion was almost completely ablated in FL-pretreated recipients on day 4 (Figure 9A). Analysis of cell division among these cells using carboxy fluorescein diacetate-succinimidyl ester dye showed lack of cell division correlating with this impaired donor T-cell expansion ( $3.1 \times 10^4$  FL vs  $50.9 \times 10^4$  control). In control recipients of allogeneic T cells, T cell activation markers CD25 and CD49

appeared on donor CD45.1<sup>+</sup> CD3<sup>+</sup> T cells on day 4 but were dramatically suppressed in FL-pretreated mice (Figure 9B-C). As an additional index of systemic T-cell responses in vivo, serum levels of IFN- $\gamma$  were measured on day 4, the time of peak concentration, and were also significantly decreased in FL-pretreated mice (Figure 9D). However, donor T-cell expansion in FL-treated mice did increase and equaled that of control mice on day 7 after BMT (data not shown). Thus, FL pretreatment of recipients inhibits early donor T-cell expansion and activation to host alloantigens in vivo, which is critical for the entire clinical course of acute GVHD.<sup>35,36</sup>

**Pretreatment of hosts with FL reduces death from acute GVHD**

Donor T-cell expansion and activation after BMT normally result in severe systemic GVHD and death in this model system. B6D2F1 recipient mice were treated with either 8-day FL (10  $\mu$ g/d, day -9 to day -2) or diluent and then were given 12 Gy TBI on day 0 and received transplants of  $5 \times 10^6$  BM cells and  $2.5 \times 10^6$  nylon wool-purified splenic T cells from B6.Ly-5a donors. GVHD was severe in controls, with 24% recipient survival at day 60, whereas 68% of FL-pretreated recipients survived (Figure 10A,  $P < .01$ ). Allogeneic control mice developed severe clinical GVHD compared with syngeneic controls, as assessed by alterations in fur texture, skin integrity, posture, mobility, and weight loss.<sup>23</sup> These signs were significantly less severe in FL-treated mice at all time



**Figure 10. Pretreatment of BMT recipients with FL reduces acute GVHD lethality.** B6D2F1 mice were injected subcutaneously with 10  $\mu$ g FL for 8 consecutive days (days -9 to -2) and received transplants of BM and splenic T cells from B6 donor mice after 12 Gy TBI on day 0. (A) Survival in control-treated (n = 17, closed circle) and FL-treated (n = 22, open circle;  $P < .01$ ) animals after allogeneic BMT and syngeneic BMT (n = 4, closed square). (B) GVHD clinical score was significantly lower in FL-treated animals (n = 22, open circle) than in controls (n = 17, closed circle) at all time points ( $P < .05$ ) and was significantly higher than in syngeneic BMT recipients (n = 4, closed square;  $P < .01$ ). Data represent mean  $\pm$  SE from 2 similar experiments. (C) Liver disease 2 weeks after BMT. Liver GVHD was significantly less in FL-treated animals ( $P < .05$ ) but was higher than in syngeneic controls ( $P < .05$ ). Randomized coded slides were scored semiquantitatively, as described in "Materials and methods," and results compared to allogeneic controls represent the mean  $\pm$  SE of 3 mice per group.

points compared to allogeneic controls ( $P < .05$ ), though scores in remained significantly higher than in syngeneic controls (Figure 10B). Weight loss as a single parameter of acute GVHD was also less pronounced in FL-treated mice than in control mice at week 9 ( $20\% \pm 2\%$  vs  $32\% \pm 1\%$ ;  $P < .05$ ). Histopathologic examination of the liver on day 14 showed significantly lower GVHD pathology scores in FL-treated animals (Figure 10C;  $P < 0.05$ ). Analysis of donor engraftment at day 60 after BMT in peripheral blood showed complete donor engraftment in FL-pretreated recipients ( $99.3\% \pm 0.7\%$ ), ruling out rejection or mixed chimerism as a potential cause of reduced GVHD. FL treatment before BMT thus, significantly reduced the ability of host APCs to activate donor T cells and significantly attenuated, but did not eliminate, acute GVHD.

FL treatment expands NK cells,<sup>37</sup> and host NK cells play a role in hybrid resistance in this strain combination.<sup>22</sup> To examine the in vivo effects of FL on host NK cells and GVHD, B6D2F1 mice received FL (10  $\mu\text{g}/\text{d}$ , day -9 to day -2) and were treated with either 200  $\mu\text{g}$  anti-NK1.1 mAbs<sup>22</sup> or diluent on days -2 and -1; then they underwent BMT as described above. Elimination of host NK cells before BMT significantly augmented donor T-cell expansion in control-treated and FL-treated recipients on day 4 after BMT (Table 1). Nevertheless, in NK-depleted recipients donor T-cell expansion was still impaired in FL-treated mice compared with control-treated mice. Death from GVHD in FL-treated, NK-depleted mice was again significantly lower than in control-treated, NK-depleted mice, ruling out the possibility that host NK cells expanded by FL treatment were primarily responsible for the reduction of acute GVHD.

## Discussion

FL treatment of mice reduced their ability to stimulate allogeneic T cells in MLR despite the fact that DC numbers increased and that freshly isolated FL DCs and control DCs from spleens were in similarly inactivated and resting states, as characterized by the low expression of MHC class II and costimulatory molecules.<sup>11,38</sup> This observation is consistent with recent findings that demonstrate the impaired allostimulatory capacity of DCs isolated from bone marrow of FL-treated mice, though that study suggested that the impaired function of FL DCs was probably a result of their immaturity.<sup>11</sup> In our experiments, however, FL DCs and control DCs displayed similar phenotypes. Freshly isolated splenic DCs express little MHC class II, CD80, or CD86, but these molecules

are up-regulated in culture even without any additional stimuli.<sup>27,28</sup> Impaired functions of FL DCs were not restored by the activation of FL DCs by overnight culture in vitro. Thus, the allostimulatory function of FL DCs is impaired regardless of their maturational status. Immature DCs can induce tolerance by inducing Tr1 cells,<sup>25,26</sup> but IL-10, a critical cytokine secreted by Tr1 cells,<sup>25,26</sup> was not detected in the supernatant of MLR or in the serum of mice treated with FL. FL DCs were also poor stimulators of IL-10<sup>-/-</sup> allogeneic T cells. Furthermore, multiple mixing experiments of FL DCs and control DCs suggest that the impaired allostimulation by FL DCs does not involve an active inhibition. Immune deviation from Th1 to Th2 is also an unlikely mechanism for these altered responses because IL-4 was also not detected in these cultures.

FL expanded splenic DCs primarily by increasing proliferation of CD8 $\alpha^+$  DCs, as previously described;<sup>39</sup> these CD8 $\alpha^+$  DCs were poor stimulators of allogeneic T cells in MLR, also as described.<sup>16,17,33</sup> Given the equivalent phenotypic maturity of FL DCs and control DCs, we hypothesized that an increased ratio of CD8 $\alpha^+$  to CD8 $\alpha^-$  DCs was responsible for the impaired allostimulatory function of FL DCs. We confirmed that CD8 $\alpha^+$  DCs were poor stimulators of allogeneic T cells in MLR and found identical stimulation of allogeneic responses in a comparison of FL DCs and control DCs by subclass. Thus, the impaired allostimulatory function of splenic FL DCs in MLR appeared to be caused by a proportional increase in the CD8 $\alpha^+$  DC subset induced by FL. This mechanism is consistent with the reduced allostimulatory capacity of splenic DCs in *RelB* mutant mice, which have only CD8 $\alpha^+$  DCs in spleen because the transcription factor *RelB* is essential for the development of CD8 $\alpha^-$ , but not of CD8 $\alpha^+$ , DCs.<sup>40</sup>

In vitro studies have suggested that CD8 $\alpha^+$  DCs play a regulatory role in T-cell interactions that ultimately result in diminished allogeneic T-cell responses.<sup>16-18,33</sup> However, mechanisms by which CD8 $\alpha^+$  DCs stimulate allogeneic T-cell responses less efficiently than CD8 $\alpha^-$  DCs are still controversial. For example, CD8 $\alpha^+$  DCs produce large amounts of IL-12,<sup>30-32</sup> and IL-12 administration can prevent acute GVHD by increasing activation-induced cell death.<sup>35,36</sup> It has been proposed that CD8 $\alpha^+$  DCs inhibit proliferation of allogeneic CD4 $^+$  T cells by Fas-mediated killing.<sup>16</sup> However, a recent study demonstrated that both subsets of DCs express FasL equally and that the proliferation of *lpr* T cells (lacking Fas) was still inferior to CD8 $\alpha^+$  DCs.<sup>34</sup> In that study, the production of IL-2 was elevated after stimulation with CD8 $\alpha^+$  DCs, suggesting that IL-2-induced, activation-induced cell death might be a mechanism for the diminished T-cell response. This result is inconsistent with previous studies showing that CD8 $\alpha^+$  DCs limit IL-2 production from CD8 $^+$  T cells in MLR.<sup>17,33</sup> In our hands, CD8 $\alpha^+$  DCs caused diminished IL-2 production from T cells in vitro, and the increased ratio of CD8 $\alpha^+$  to CD8 $\alpha^-$  DCs in vivo after FL treatment also inhibited IL-2 production and the activation of allogeneic donor T cells. Furthermore, mixing experiments of CD8 $\alpha^+$  and CD8 $\alpha^-$  DCs demonstrated that CD8 $\alpha^+$  DCs did not suppress the ability of CD8 $\alpha^-$  DCs to stimulate allogeneic T cells, even though CD8 $\alpha^+$  DCs can inhibit overall T-cell reactivity to peptide-loaded CD8 $\alpha^-$  DCs.<sup>41</sup> Thus, these results suggest that activation-induced cell death is an unlikely mechanism for the reduced capacity to stimulate T cells.

We confirmed the importance of the decrease in allostimulation caused by FL in vivo using a mouse model of GVHD in which the interaction of donor-derived T cells with allogeneic host APCs plays a fundamental role.<sup>42</sup> Systemic administration of FL does not change the distinct localization pattern of DC subsets: CD8 $\alpha^+$  DCs are present in T-cell areas of secondary lymphoid organs, whereas

**Table 1. Effects of FL treatment on host NK cells, donor T cell expansion, and GVHD**

Group	Treatment		Donor T cells ( $\times 10^4/\text{spleen}$ )	% survival (day 45)
	FL	$\alpha\text{NK1.1}$		
A	-	-	117 $\pm$ 13	NT
B	-	+	238 $\pm$ 47*	43 (n = 7)
C	+	-	22 $\pm$ 10	NT
D	+	+	106 $\pm$ 8†	88 (n = 8)†

B6D2F1 mice received FL (10  $\mu\text{g}/\text{day}$ , day -9 to day -2) and were treated with either 200  $\mu\text{g}$  of anti-NK1.1 mAbs<sup>22</sup> or diluent on days -2 and -1 and were then given 12 Gy TBI on day 0 and received transplants of  $5 \times 10^6$  BM cells and  $2.5 \times 10^6$  nylon wool-purified splenic T cells from B6.Ly-5a donors. Donor T-cell number was determined as CD45.1 $^+$  CD3 $^+$  cells by 2-color flow cytometric analysis of splenocytes on day 4 (3 mice/group). Data represent 1 of 2 similar experiments.

NT indicates not tested.

\* $P < .05$  compared to group A.

† $P < .05$  compared to group B.

CD8 $\alpha^-$  DCs remain in marginal zones.<sup>30</sup> Despite the increased number of host DCs after FL treatment, early donor T-cell responses to host antigens during the GVH reaction were dramatically inhibited, including their activation, expansion, and differentiation to Th1 cells. Because these donor T-cell responses early after BMT determine the entire clinical outcome of acute GVHD,<sup>35,36</sup> their inhibition in FL-pretreated hosts resulted in an overall reduction in GVHD morbidity and mortality. FL treatment also expands NK cells,<sup>37</sup> and depletion of NK cells expanded donor T cells in our study. Nevertheless, donor T-cell expansion and GVHD mortality were reduced in FL-treated, NK-depleted hosts compared with control-treated, NK-depleted hosts. These results rule out the possibility that the expansion of host NK cells by FL treatment is primarily responsible for reduced numbers of donor T cells early after BMT and the subsequent reduction of acute GVHD.

GVHD is a major cause of morbidity in BMT, and new approaches to this difficult problem are required. Efforts to prevent GVHD have long focused on the suppression of donor T-cell functions.<sup>43</sup> Given the important role of host-derived APCs in GVHD induction, strategies to inactivate host DCs in BMT appear to be promising, though such novel selective targeting of APCs in vivo has not yet been clinically tested. We believe that these data represent the first demonstration of reduced GVHD by the modulation of host-derived DCs through the prophylactic administration of FL. This approach is unique because GVHD is ameliorated by the expansion rather than the elimination of host-derived DCs. The timing of FL administration within this strategy is critical, and our results stand in stark contrast to a recent report of the exacerbation of GVHD when recipients were given FL after BMT.<sup>44</sup> One explanation for the difference between these studies is the lack of the effects of FL on host DCs in that study because host DCs essentially disappeared by day 6 after BMT. FL treatment did not expand DCs in that report, but it did up-regulate inflammatory

cytokine expression. It is possible that macrophages–monocytes that were activated by TBI may be further stimulated by FL, and that could also increase the severity of GVHD.

Recent evidence suggests that immature DCs and genetically engineered DCs that constitutively express immunosuppressive molecules have the potential to down-regulate immune responses.<sup>45</sup> Our data suggest a novel mechanism to modulate immune responses by the administration of FL. This concept is also supported by a recent report that donor-derived CD8 $\alpha^+$  DCs blunt host T-cell responses to allogeneic donor BM cells and that they are critical for successful engraftment of hematopoietic stem cells across a full MHC barrier.<sup>46</sup> Additional support for this notion derived from vaccination studies, in which strategies that expand CD8 $\alpha^-$  DCs alone elicit more efficient antitumor immunity than those that preferentially expand CD8 $\alpha^+$  DCs in association with the secretion of FL.<sup>47</sup>

Our study showed that although FL treatment to recipients before BMT significantly attenuated GVHD, it did not eliminate it. Perhaps the impaired allostimulation by FL DCs is short lived because of an extremely rapid turnover of CD8 $\alpha^+$  DCs compared to CD8 $\alpha^-$  DCs.<sup>48</sup> In fact, the retention of some antihost reactivity by donor T cells may be beneficial if the important graft-versus-leukemia effect is preserved.<sup>49</sup> It is also possible that the biologic effects of FL in humans will differ from those observed in mice. For example, FL administration in humans increases the ratio of CD11c $^+$  DC1 (equivalent to CD8 $\alpha^-$  DCs in mice) to CD11c $^-$  IL-3 receptor $^+$  DC2 (equivalent to CD8 $\alpha^+$  DCs in mice) in peripheral blood. A recent analysis of the outcome of BMT in humans suggested that the increased number of DC2 in the graft was associated with less chronic GVHD.<sup>50</sup> Studies are in progress to examine this issue and to determine whether the new balance of DC subsets produced by FL administration can be exploited in clinical transplantation protocols.

## References

- Matthews W, Jordan CT, Wiegand GW, Pardoll D, Lemischka IR. A receptor tyrosine kinase specific to hematopoietic stem and progenitor cell-enriched populations. *Cell*. 1991;65:1143-1152.
- Lyman SD, James L, Vanden Bos T, et al. Molecular cloning of a ligand for the flt3/flk-2 tyrosine kinase receptor: a proliferative factor for primitive hematopoietic cells. *Cell*. 1993;75:1157-1167.
- Hannum C, Culppepper J, Campbell D, et al. Ligand for FLT3/FLK2 receptor tyrosine kinase regulates growth of haematopoietic stem cells and is encoded by variant RNAs. *Nature*. 1994;368:643-648.
- Maraskovsky E, Brasel K, Teepe M, et al. Dramatic increase in the numbers of functionally mature dendritic cells in Flt3 ligand treated mice: multiple dendritic cell subpopulation identified. *J Exp Med*. 1996;184:1953-1962.
- Pulendran B, Banachereau J, Maraskovsky E, Maliszewski C. Modulating the immune response with dendritic cells and their growth factors. *Trends Immunol*. 2001;22:41-47.
- Steptoe RJ, Fu F, Li W, et al. Augmentation of dendritic cells in murine organ donors by Flt3 ligand alters the balance between transplant tolerance and immunity. *J Immunol*. 1997;159:5483-5491.
- Lynch DH, Andreasen A, Maraskovsky E, Whitmore J, Miller RE, Schuh JCL. Flt 3 ligand induces tumor regression and antitumor immune responses *in vivo*. *Nat Med*. 1997;3:625-631.
- Qian S, Lu L, Fu F, et al. Donor pretreatment with Flt-3 ligand augments antidonor cytotoxic T lymphocyte, natural killer, and lymphokine-activated killer cell activities within liver allografts and alters the pattern of intragraft apoptotic activity. *Transplantation*. 1998;65:1590-1598.
- Pulendran B, Smith JL, Jenkins M, Schoenborn M, Maraskovsky E, Maliszewski CR. Prevention of peripheral tolerance by a dendritic cell growth factor: flt3 ligand as an adjuvant. *J Exp Med*. 1998;188:2075-2082.
- Antonyamy MA, Steptoe RJ, Khanna A, Rudert WA, Subbotin VM, Thomson AW. Flt-3 ligand increases microchimerism but can prevent the therapeutic effect of donor bone marrow in transiently immunosuppressed cardiac allograft recipients. *J Immunol*. 1998;160:4106-4113.
- Morelli AE, Antonyamy MA, Takayama T, et al. Microchimerism, donor dendritic cells, and alloimmune reactivity in recipients of Flt3 ligand-mobilized hemopoietic cells: modulation by tacrolimus. *J Immunol*. 2000;165:226-237.
- Li W, Lu L, Wang Z, et al. Il-12 antagonism enhances apoptotic death of T cells within hepatic allografts from Flt3 ligand-treated donors and promotes graft acceptance. *J Immunol*. 2001;166:5619-5628.
- Kremer IB, Gould MP, Cooper KD, Heinzel FP. Pretreatment with recombinant Flt3 ligand partially protects against progressive cutaneous leishmaniasis in susceptible BALB/c mice. *Infect Immunol*. 2001;69:673-680.
- Gregory SH, Sagnimeni AJ, Zurowski NB, Thomson AW. Flt3 ligand pretreatment promotes protective immunity to *Listeria monocytogenes*. *Cytokine*. 2001;13:202-208.
- Viney JL, Mowat AM, O'Malley JM, Williamson E, Fanger NA. Expanding dendritic cells in vivo enhances the induction of oral tolerance. *J Immunol*. 1998;160:5815-5825.
- Suss G, Shortman K. A subclass of dendritic cells kills CD4 T cells via Fas/Fas-ligand-induced apoptosis. *J Exp Med*. 1996;183:1789-1796.
- Kronin V, Winkel K, Suss G, et al. A subclass of dendritic cells regulates the response of naive CD8 T cells by limiting their IL-2 production. *J Immunol*. 1996;157:3819-3827.
- Vremec D, Pooley J, Hochrein H, Wu L, Shortman K. CD4 and CD8 expression by dendritic cell subtypes in mouse thymus and spleen. *J Immunol*. 2000;164:2978-2986.
- Inaba K, Pack M, Inaba M, Sakuta H, Isdell F, Steinman RM. High levels of a major histocompatibility complex II self-peptide complex on dendritic cells from the T cell areas of lymph nodes. *J Exp Med*. 1997;186:665-672.
- Fields RC, Osterholzer JJ, Fuller JA, Thomas EK, Geraghty PJ, Mule JJ. Comparative analysis of murine dendritic cells derived from spleen and bone marrow. *J Immunother*. 1998;21:323-339.
- Teshima T, Hill GR, Pan L, et al. IL-11 separates graft-versus-leukemia effects from graft-versus-host disease after bone marrow transplantation. *J Clin Invest*. 1999;104:317-325.
- Bix M, Liao NS, Zijlstra M, Loring J, Jaenisch R, Raulet D. Rejection of class I MHC-deficient hematopoietic cells by irradiated MHC-matched mice. *Nature*. 1991;349:329-331.
- Cooke KR, Kobzik L, Martin TR, et al. An experimental model of idiopathic pneumonia syndrome after bone marrow transplantation. I: the roles of minor H antigens and endotoxin. *Blood*. 1996;88:3230-3239.

24. Cooke KR, Krenger W, Hill G, et al. Host reactive donor T cells are associated with lung injury after experimental allogeneic bone marrow transplantation. *Blood*. 1998;92:2571-2580.
25. Jonuleit H, Schmitt E, Schuler G, Knop J, Enk AH. Induction of interleukin 10-producing, non-proliferating CD4(+) T cells with regulatory properties by repetitive stimulation with allogeneic immature human dendritic cells. *J Exp Med*. 2000; 192:1213-1222.
26. Roncarolo MG, Levings MK, Traversari C. Differentiation of T regulatory cells by immature dendritic cells. *J Exp Med*. 2001;193:F5-F9.
27. Inaba K, Witmer-Pack M, Inaba M, et al. The tissue distribution of the B7-2 costimulator in mice: abundant expression on dendritic cells in situ and during maturation in vitro. *J Exp Med*. 1994;180: 1849-1860.
28. Vremec D, Shortman K. Dendritic cell subtypes in mouse lymphoid organs: cross-correlation of surface markers, changes with incubation, and differences among thymus, spleen, and lymph nodes. *J Immunol*. 1997;159:565-573.
29. Miller RG, Muraoka S, Claesson MH, Reimann J, Benveniste P. The veto phenomenon in T-cell regulation. *Ann N Y Acad Sci*. 1988;532:170-176.
30. Pulendran B, Lingappa J, Kennedy MK, et al. Developmental pathways of dendritic cells in vivo: distinct function, phenotype, and localization of dendritic cell subsets in FLT3 ligand-treated mice. *J Immunol*. 1997;159:2222-2231.
31. Sousa CR, Hieny S, Scharton-Kersten T, et al. In vivo microbial stimulation induces rapid CD40 ligand-independent production of interleukin 12 by dendritic cells and their redistribution to T cell areas. *J Exp Med*. 1997;186:1819-1829.
32. Maldonado-Lopez R, De Smedt T, Michel P, et al. CD8alpha+ and CD8alpha- subclasses of dendritic cells direct the development of distinct T helper cells in vivo. *J Exp Med*. 1999;189:587-592.
33. Kronin V, Vremec D, Winkel K, et al. Are CD8+ dendritic cells (DC) veto cells? the role of CD8 on DC in DC development and in the regulation of CD4 and CD8 T cell responses. *Int Immunol*. 1997;9:1061-1064.
34. O'Connell PJ, Logar AJ, Thomson AW. Differential regulation of T-cell proliferation and apoptosis by hepatic CD8alpha(+) (lymphoid-related) and CD8alpha(-) (myeloid) dendritic cells. *Transplant Proc*. 2001;33:250-251.
35. Yang YG, Dey BR, Sergio JJ, Pearson DA, Sykes M. Donor-derived interferon gamma is required for inhibition of acute graft-versus-host disease by interleukin 12. *J Clin Invest*. 1998;102:2126-2135.
36. Dey BR, Yang YG, Szot GL, Pearson DA, Sykes M. Interleukin-12 inhibits graft-versus-host disease through an Fas-mediated mechanism associated with alterations in donor T-cell activation and expansion. *Blood*. 1998;91:3315-3322.
37. Shaw SG, Maung AA, Steptoe RJ, Thomson AW, Vujanovic NL. Expansion of functional NK cells in multiple tissue compartments of mice treated with Flt3-ligand: implications for anti-cancer and antiviral therapy. *J Immunol*. 1998;161:2817-2824.
38. O'Connell PJ, Morelli AE, Logar AJ, Thomson AW. Phenotypic and functional characterization of mouse hepatic CD8 alpha+ lymphoid-related dendritic cells. *J Immunol*. 2000;165:795-803.
39. Ohm JE, Shurin MR, Esche C, Lotze MT, Carbone DP, Gabrilovich DI. Effect of vascular endothelial growth factor and FLT3 ligand on dendritic cell generation in vivo. *J Immunol*. 1999;163: 3260-3268.
40. Wu L, D'Amico A, Winkel KD, Suter M, Lo D, Shortman K. RelB is essential for the development of myeloid-related CD8alpha- dendritic cells but not of lymphoid-related CD8alpha+ dendritic cells. *Immunity*. 1998;9:839-847.
41. Grohmann U, Bianchi R, Belladonna mL, et al. IL-12 acts selectively on CD8 alpha- dendritic cells to enhance presentation of a tumor peptide in vivo. *J Immunol*. 1999;163:3100-3105.
42. Shlomchik WD, Couzens MS, Tang CB, et al. Prevention of graft versus host disease by inactivation of host antigen-presenting cells. *Science*. 1999;285:412-415.
43. Teshima T, Ferrara JLM. Pathogenesis and prevention of graft-versus-host disease. *Curr Opin Organ Transplant*. 2001;6:265.
44. Blazar BR, McKenna HJ, Panoskaltis-Mortari A, Taylor PA. Flt3 ligand (FL) treatment of murine donors does not modify graft-versus-host disease (GVHD) but FL treatment of recipients post-bone marrow transplantation accelerates GVHD lethality. *Biol Blood Marrow Transplant*. 2001;7:197-207.
45. Lechler R, Ng WF, Steinman RM. Dendritic cells in transplantation—friend or foe? *Immunity*. 2001; 14:357-368.
46. Gandy KL, Domen J, Aguila H, Weissman IL. CD8+TCR+ and CD8+TCR- cells in whole bone marrow facilitate the engraftment of hematopoietic stem cells across allogeneic barriers. *Immunity*. 1999;11:579-590.
47. Mach N, Gillesen S, Wilson SB, Sheehan C, Mihm M, Dranoff G. Differences in dendritic cells stimulated in vivo by tumors engineered to secrete granulocyte-macrophage colony-stimulating factor or Flt3-ligand. *Cancer Res*. 2000;60:3239-3246.
48. Kamath AT, Pooley J, O'Keefe MA, et al. The development, maturation, and turnover rate of mouse spleen dendritic cell populations. *J Immunol*. 2000;165:6762-6770.
49. Barrett J, Childs R. The benefits of an alloresponse: graft-versus-tumor. *J Hematother Stem Cell Res*. 2000;9:347-354.
50. Waller EK, Rosenthal H, Jones TW, et al. Larger numbers of CD4(bright) dendritic cells in donor bone marrow are associated with increased relapse after allogeneic bone marrow transplantation. *Blood*. 2001;97:2948-2956.