

Constitutive Stat3, Tyr705, and Ser727 phosphorylation in acute myeloid leukemia cells caused by the autocrine secretion of interleukin-6

Jan-Jacob Schuringa, Albertus T. J. Wierenga, Wiebe Kruijer, and Edo Vellenga

To explore the activation patterns of signal transducer and activator of transcription 3 (Stat3) in acute myeloid leukemia (AML), we examined whether the phosphorylation of tyrosine705 (Tyr705) and serine727 (Ser727) residues was abnormally regulated in cells from patients with AML. In 5 of 20 (25%) patients with AML, Stat3 was constitutively phosphorylated on Tyr705 and Ser727, which were not further up-regulated by treatment with IL-6. Furthermore, Stat3 was constitutively bound to the IRE response

element in these cells as determined by electrophoretic mobility shift assay, and stimulation with IL-6 did not result in increased DNA binding. Interestingly, AML cells with constitutive Stat3 activation also secreted high levels of IL-6 protein. Treating these AML cells with anti-IL-6 resulted in restored IL-6-inducible Stat3 phosphorylation on both Tyr705 and Ser727 with low or undetectable basal phosphorylation levels in unstimulated cells. In contrast, treatment with anti-IL-1 did not result in altered Stat3 phosphorylation patterns.

The constitutive IL-6 expression was associated with elevated levels of suppressor of cytokine signaling-1 (SOCS-1) and SOCS-3 mRNA expression, which were not down-regulated by anti-IL-6. These data indicate that the constitutive Stat3 activation in the investigated AML blasts is caused by high IL-6 secretion levels, thus stimulating the Jak/Stat pathway in an autocrine manner, a paracrine manner, or both. (Blood. 2000;95:3765-3770)

© 2000 by The American Society of Hematology

Introduction

Acute myeloid leukemia (AML) is characterized by an accumulation of immature blasts in the bone marrow, resulting in a disturbed production of normal hematopoietic cells.¹ Although little is known about the precise mechanisms of pathogenesis at the molecular level of this disease, AML is often associated with chromosomal translocations and inversions, affecting gene expression in ways that lead to defects in normal programs of cell proliferation, differentiation, and survival.²⁻⁵ The most frequent targets of chromosomal translocations are transcription factors that result in the recombination of normally unrelated sequences from different chromosomes into hybrid genes that encode fusion products with altered function.^{2,4} However, the chromosomal translocations and inversions found in patients with AML are highly divergent, and the precise molecular defects in AML still have to be elucidated.²

IL-6 is a pleiotropic cytokine that can be constitutively expressed in AML cells.⁶ It initiates its action by binding to its receptor, composed of 2 subunits: an 80-kd IL-6 binding protein and a 130-kd transmembrane signal-transducing component (gp130).⁷⁻⁹ The gp130 receptor protein is also used by other members of the IL-6 cytokine family, including IL-11, oncostatin M, leukemia inhibitory factor, and ciliary neurotrophic factor.¹⁰⁻¹² Activation of IL-6 signal transduction involves gp130 dimerization, ligand-dependent tyrosine phosphorylation of the gp130-associated protein-tyrosine kinases Jak1, Jak2, and Tyk2, and tyrosine phosphorylation of signal transducer and activator of transcription 3 (Stat3).¹³ Tyrosine phosphorylation of Stat3 occurs at a single-residue tyrosine residue (Tyr705) located in a conserved SH2 domain, allowing Stat dimerization and transcription activa-

tion.¹³ In addition to tyrosine phosphorylation, Stat3 is serine phosphorylated at a single residue (Ser727) in response to IL-6 and to other extracellular factors, including interferon- γ (IFN- γ) and epidermal growth factor.^{14,15} Recently, it was demonstrated that maximal Stat3 transactivation requires phosphorylation on a unique serine residue, Ser727, and that IL-6 induces Ser727 phosphorylation of Stat3 by a signal transduction cascade involving Vav, Rac-1, MEKK, and SEK.¹⁶

Recently, a family of cytokine-inducible inhibitors of signaling was identified that down-regulates the Jak/Stat signaling pathway.¹⁷⁻¹⁹ The proteins in this family, including cytokine-inducible SH-2-containing protein and SOCS/Jak-binding protein/Stat-induced Stat inhibitor proteins, are proteins containing SH2 domains that interact with Jak, thus preventing the activation of Stat.¹⁷⁻¹⁹ Specifically, SOCS-1 and SOCS-3 are implicated in the down-regulation of the IL-6-induced activation of Stat3.²⁰⁻²³ Moreover, SOCS-1 and SOCS-3 can quickly be up-regulated by IL-6.^{18,19,21}

However, the activation of Stat has not only been implicated in gp130 receptor downstream signaling, it may be caused by oncogene activation. Abnormal activation of Stat1, Stat3, Stat5, and Stat6 has been demonstrated in cells transformed by Src, Abl, and various other oncoproteins and tumor viruses.²⁴⁻³² In addition, in acute leukemia a spontaneous activation of Stat has been observed. Constitutive DNA binding of Stat1 and Stat5 was found in acute lymphocytic leukemia, whereas constitutive DNA binding and tyrosine phosphorylation of Stat1, Stat3, and Stat5 were detected in several patients with AML.^{25,33-35} Furthermore,

From the Department of Hematology, University Hospital Groningen, Groningen, and the Department of Genetics, Biological Center, Kerklaan, Haren, The Netherlands.

Submitted July 12, 1999; accepted February 17, 2000.

Supported by grant RUG 96-1217 from the Dutch Cancer Foundation.

Reprints: E. Vellenga, Department of Hematology, University Hospital Groningen, Hanzeplein 1, 9713 GZ, Postbus 30001 9700 RB, Groningen, The Netherlands; e-mail: e.vellenga@int.azg.nl.

ning, Hanzeplein 1, 9713 GZ, Postbus 30001 9700 RB, Groningen, The Netherlands; e-mail: e.vellenga@int.azg.nl.

The publication costs of this article were defrayed in part by page charge payment. Therefore, and solely to indicate this fact, this article is hereby marked "advertisement" in accordance with 18 U.S.C. section 1734.

© 2000 by The American Society of Hematology

constitutive Stat1 and Stat3 serine phosphorylation has been found in some patients with AML and many patients with chronic lymphocytic leukemia.³⁶ Although it has not been demonstrated that constitutive Stat3 activation is contributive in the development of leukemias, the consistent finding of abnormal Stat3 activation in these cells suggests that Stat might fulfill a role in the ongoing process of transformation. Recently, it was demonstrated that Stat3 plays a key role in G1- to S-phase cell-cycle transition through the up-regulation of cyclins D2, D3, A, and *cdc25A* and the concomitant down-regulation of p21 and p27.³⁷ Thus, constitutive Stat3 activation might lead to a growth advantage of the malignant counterpart.

Here, we report that constitutive activation of Stat3 is observed in 25% of the investigated patients with AML, caused by autocrine secretion of IL-6, thus leading to continuous activation of the Jak/Stat pathway. The high expression levels of IL-6 protein are also associated with the increased expression of SOCS-1 and SOCS-3 mRNA. Blocking the action of secreted IL-6 by treatment with anti-IL-6 leads to a loss of constitutive Stat3 phosphorylation and normal IL-6-induced Stat3 activation patterns.

Materials and methods

Patient population and isolation of acute myeloid leukemia cells

Peripheral blood cells from 20 patients with AML were studied after informed consent was obtained. Patients with AML were defined according to the classification of the FAB committee as M1 to M6 (Table 1).³⁸ AML blasts were isolated by density-gradient centrifugation, as described.³⁹ Cells were cryopreserved in aliquots of 20 to 50 × 10⁶ cells/mL in 10% dimethyl sulfoxide (Sigma, St. Louis, MO) and 10% FCS (Hyclone, Logan, UT) using a method of controlled freezing and storage in liquid nitrogen. After thawing, T-lymphocytes were depleted by 2-aminoethylisothionium bromide-treated sheep red blood cell rosetting. The cell population consisted of more than 98% AML blasts as determined by May-Grünwald-Giemsa staining. Fluorescence-activated cell sorting analysis showed less than 1% CD3-positive cells (Becton Dickinson, Sunnyvale, CA).

Table 1. FAB classifications, phosphorylation patterns, and IL-6 secretion levels of patients with AML

| Patient | FAB | Constitutive Tyr705 and Ser727 phosphorylation | IL-6 secretion (pg/mL) |
|---------|-----|--|------------------------|
| 1 | M2 | + | 5924 |
| 2 | M4 | – | 0 |
| 3 | M0 | – | 323 |
| 4 | M4 | – | 0 |
| 5 | M4 | – | 0 |
| 6 | M2 | – | 0 |
| 7 | M1 | – | 0 |
| 8 | M4 | – | 0 |
| 9 | M5A | – | 0 |
| 10 | M2 | – | 0 |
| 11 | M5A | + | 23667 |
| 12 | M1 | – | 0 |
| 13 | M1 | – | 0 |
| 14 | M5 | + | 4058 |
| 15 | M4 | – | 0 |
| 16 | M2 | – | 0 |
| 17 | M2 | – | 0 |
| 18 | M0 | + | 7040 |
| 19 | M2 | + | 946 |
| 20 | M2 | – | 208 |

Cell culture, reagents, and antibodies

HepG2 cells were cultured in Dulbecco's modified Eagle's medium supplemented with 100 U/mL penicillin, 100 µg/mL streptomycin, and 10% fetal calf serum (FCS). AML blasts were cultured at 37°C at a density of 2 × 10⁶/mL in RPMI 1640 media (Flow, Rockville, MD) supplemented with 100 U/mL penicillin, 100 µg/mL streptomycin, and 10% FCS. For reverse transcription-polymerase chain reaction (RT-PCR) analysis, cells from patient 11 with AML were cultured for 24 hours in RPMI 1640 and the supernatant was collected, and this was used to culture cells from patient 7 with AML, as indicated in the text. Cells were stimulated with 10 ng/mL human recombinant IL-6 (a generous gift from Dr S. C. Clark, Genetics Institute, Cambridge, MA) or 10 ng/mL IFN-γ (Endogen, Woburn, MA). Antibodies against Stat3 (C-20 and K-15; Santa Cruz Technology, Santa Cruz, CA) were used in dilutions of 1:4000. Antibodies against Stat3 (Tyr705) and Stat3 (Ser727) were obtained from New England BioLabs and were used in a 1:1000 dilution. Anti-IL-6 was a gift from L. van Aarden (CLB, Amsterdam, The Netherlands) and was used in a dilution of 1:1000, which was shown to inhibit the biologic activity of more than 100 ng/mL IL-6 (data not shown). Anti-IL-1α was a gift from S. Gillis (Immunex, Seattle, WA), and anti-IL-1β was purchased from R&D Systems (Minneapolis, MN). Both antibodies were used in a dilution of 1:250.

Western blotting

Cells were plated in 12-well culture plates, stimulated, washed, and collected in phosphate-buffered saline. Cells were lysed in Laemmli sample buffer and boiled for 5 minutes before separation on 7.5% sodium dodecyl sulfate-polyacrylamide gel electrophoresis (SDS-PAGE) gels. The proteins were transferred to a polyvinylidene difluoride membrane (Millipore, Etten-Leur, The Netherlands) in Tris-glycine buffer at 100 mA for 1.5 hours using an electroblotter (Pharmacia, Woerden, The Netherlands). Membranes were blocked with phosphate-buffered saline containing 5% nonfat milk before incubation with antibodies. Binding of each antibody was detected by HRP labeled pig-anti-rabbit secondary antibodies using enhanced chemiluminescence (ECL) according to the manufacturer's recommendations (Amersham, Roosendaal, The Netherlands). Western blots were quantified using Image-Pro (Media Cybernetics, Silver Spring, MD).

Electrophoretic mobility shift assay

Nuclear extracts were prepared from 10⁷ cells, as described previously, according to the rapid Dignam method.⁴⁰ A double-stranded synthetic oligo comprising the IL-6RE of the ICAM-1 promoter (upper strand: 5'-CGCGTAGCTTAGGTTCCGGGAAAGCAGC-3') was ³²P-labeled by filling in the 5'-protruding ends with α-³²P-dATP and Klenow enzyme. Five micrograms nuclear extract was incubated with 20 000 cpm-labeled probe for 20 minutes at 26°C, and gel retardation analysis was performed on native 4% polyacrylamide gels in 0.5 × TBE. In supershift experiments, 1 µL anti-Stat3 antibodies (C-20 supershift reagent; Santa Cruz Technologies) or anti-Stat1 antibodies (Transduction Laboratories, Lexington, KY) were added.

RNA extraction and RT-PCR

For RT-PCR, total RNA was isolated from 10⁷ cells using Trizol according to the manufacturer's recommendations (GIBCO Life Technologies). Three micrograms RNA per sample was reverse transcribed with M-MuLV reverse transcriptase (Boehringer Mannheim, Almere, The Netherlands). For PCR, 2 µL cDNA was amplified using β-2-globulin primers (forward: 5'-CCAGCAGAGAATGGAAAGTC-3'; reverse: 5'-GATGCTGCTTACATGTCTCG), SOCS-1 primers (forward: 5'-CACGCACTCCGCACATTCC-3'; reverse: 5'-TCCAGCAGCTCGAAGAGGCA-3'), or SOCS-3 primers (forward: 5'-TCACCCACAGCAAGTTCCCGC-3'; reverse: 5'-GTTGACGGTCTTCCGACAGAGATGC-3') in a total volume of 50 µL using 2 U *Taq* polymerase (Boehringer Mannheim). After 25 cycles, 15-µL aliquots were run on 1.5% agarose gels.

IL-6 secretion

Then 2 × 10⁶ cells were plated in 1 mL RPMI 1640 containing 10% FCS and treated with anti-IL-6 antibodies as indicated. After 24 hours, cell-free

supernatants were obtained by centrifugation of the suspension. IL-6 protein levels were measured using the commercially available enzyme-linked immunosorbent assay according to the manufacturer's recommendations (CLB, Amsterdam, The Netherlands)

Statistics

For IL-6 secretion, experiments were performed in triplicate, and differences between groups were tested for significance using the 2-tailed *t* test. *P* < .05 was considered significant.

Results

Constitutive and non-IL-6-inducible Stat3, Tyr705, and Ser727 phosphorylation and DNA binding in AML cells

To assess the phosphorylation status of Stat3 in AML cells, blasts of 20 untreated patients were cultured in RPMI 1640 containing 10% FCS and either were left unstimulated or were stimulated with 10 ng/mL IL-6 for 15 minutes. Total cell extracts were subjected to Western blot analysis, and Stat3 was visualized using specific antibodies against phosphorylated Stat3 on Tyr705 and Ser727. Of 20 patients under investigation, 5 (25%) showed constitutive Stat3 tyrosine and serine phosphorylation, which was not further up-regulated by stimulation with IL-6 (Figure 1; patients 1, 11, 14, 18, 19). Fifteen patients showed normal transient IL-6-induced Stat3 phosphorylation patterns with similar kinetics as in HepG2 cells (Figure 1). Interestingly, the expression levels of Stat3 varied strongly among the AML samples. In addition, there was a strong variation in IL-6-induced Stat3 phosphorylation levels; in patients with AML with constitutive Stat3 activation, the degree of phosphorylation was relatively low (Figure 1).

Nuclear extracts were isolated from 3 AML samples (Figure 2; patients 17, 18, 19), and Stat3 DNA binding was studied on the IRE from the ICAM-1 promoter. The AML cells characterized by IL-6-induced Stat3 Tyr705 phosphorylation also demonstrated IL-6-induced Stat3 DNA binding. Supershift analysis demonstrated that the complexes bound to the IRE in response to 10 ng/mL IL-6 were composed of Stat3 but not of Stat1. In contrast, stimulation with 10 ng/mL IFN- γ strongly induced Stat1 DNA binding. Constitutive Stat3 Tyr705 correlated well with constitutive DNA binding, which could not be further up-regulated by IL-6. Finally, Western blotting experiments using antibodies recognizing Tyr701-phosphorylated Stat1 demonstrated no constitutive or IL-6-induced Stat1 phosphorylation (data not shown). Taken together, these data demonstrated that approximately 25% of the patients with AML were characterized by a constitutive activation of Stat3 not inducible by IL-6.

Constitutive Stat3 activation is correlated with high IL-6 secretion levels

To further investigate the nature of the constitutive Stat3 activation in AML cells, IL-6 protein levels were determined in cell-free supernatants after 24 hours of culture. Patients characterized by constitutive Stat3 phosphorylation and DNA binding demonstrated high levels of spontaneous IL-6 protein secretion (946 to 23 667 pg/mL), whereas AML cells with IL-6 inducible Stat3 activation showed low or no detectable IL-6 protein levels (Table 1).

Treatment of AML cells with anti-IL-6, but not anti-IL-1, restores Stat3 inducibility by IL-6

Because AML cells characterized by constitutive Stat3 activation also spontaneously secreted high levels of IL-6 protein into the medium, we questioned whether IL-6 might be responsible for the

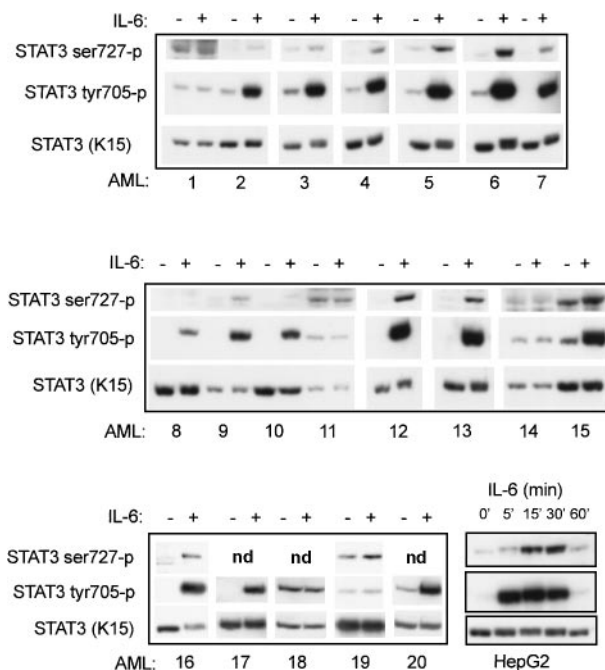


Figure 1. Constitutive and non-IL-6-inducible Stat3 phosphorylation patterns are observed in 25% of the investigated patients with AML. AML cells and HepG2 cells were plated in 12-well culture plates, either unstimulated or stimulated with 10 ng/mL IL-6 for 15 minutes (AML) or for 5 to 60 minutes (HepG2), and equal amounts of total cell lysates were subjected to SDS-PAGE followed by Western blot analysis. Phosphorylated Stat3 was visualized using phospho-specific antibodies recognizing Tyr705- and Ser727-phosphorylated Stat3. As a control, equal amounts of total cell lysates were Western blotted using antibodies against Stat3 (K-15).

constitutive Stat3 activation. Subsequently, AML cells (patients 1, 11, 14, 18, 19) were cultured for 24 hours in the absence and presence of anti-IL-6 and were washed; this was followed by IL-6 stimulation for 15 minutes. Pretreatment with anti-IL-6 resulted in inhibition of the basal Tyr705 and Ser727 phosphorylation of Stat3. A representative experiment is shown in Figure 3A. In addition, Stat3 Tyr705 and Ser727 phosphorylations could now be induced by treatment with IL-6 to 18.4-fold and 6.8-fold induction, respectively.

To study further the kinetics of Stat3 Tyr705 phosphorylation with longer stimulation of IL-6, in 2 patients AML cells with and without constitutive Stat3 activation were treated with IL-6 for

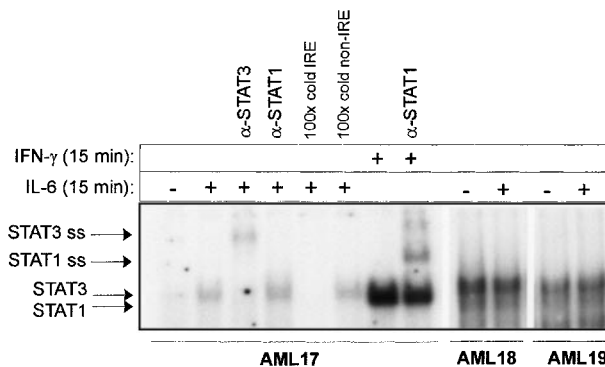


Figure 2. Electrophoretic mobility shift assay of AML samples. AML cells (patients 17, 18, 19) were either unstimulated or stimulated with 10 ng/mL IL-6 or IFN- γ as indicated. Nuclear extracts were isolated and analyzed for Stat3 binding activity by electrophoretic mobility shift assay using a 32 P-labeled IRE probe from the human ICAM promoter. Supershift assays were performed using antibodies against Stat1 and Stat3, and in competition experiments a 100-fold molar excess of IRE or an aspecific probe was used.

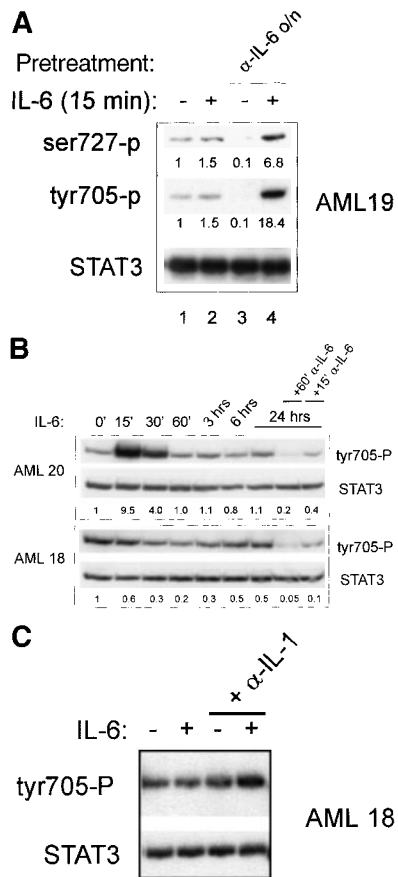


Figure 3. Treatment with anti-IL-6 but not anti-IL-1 blocks constitutive Stat3 phosphorylation and restores IL-6 inducibility. (A) AML cells (patient 19) were cultured in 12-well plates and pretreated with either anti-IL-6 (1:1000) or left untreated. After 24 hours, cells were washed and were left unstimulated or were stimulated with 10 ng/mL IL-6 for 15 minutes. (B) AML cells (patients 18, 20) were cultured in 12-well plates and stimulated with 10 ng/mL IL-6 for several time periods as indicated. After 24 hours, cells were treated with anti-IL-6 (1:1000) as indicated for 15 or 60 minutes. Equal amounts of total cell lysates were subjected to SDS-PAGE, followed by Western blot analysis as described in A. (C) AML cells (patient 18) cultured in 12-well plates were either pretreated with anti-IL-1 (1:250) overnight or left untreated. After 24 hours, cells were washed and stimulated with 10 ng/mL IL-6 for 15 minutes as indicated. Equal amounts of total cell lysates were Western blotted as described in A.

varying time periods from 15 minutes to 24 hours (Figure 3B). IL-6 induced a quick and strong up-regulation of Stat3 Tyr705 phosphorylation in patient 20, whose levels returned to low basal levels after 60 minutes. In patient 18, IL-6 did not induce Stat3 Tyr705 phosphorylation within 24 hours. Furthermore, the time-course of the action of anti-IL-6 was investigated in both patients after 24 hours of stimulation with IL-6. As depicted in Figure 3B, 15-minute treatment with anti-IL-6 already reduced Tyr705 phosphorylation, which was completely reduced to low basal levels after 60-minute treatment with anti-IL-6. These data indicate that constitutive Stat3 phosphorylation can quickly be down-regulated by treating the cells with anti-IL-6.

Previously, it was demonstrated that IL-1 is an important cytokine involved in IL-6 production by AML cells.^{1,41,42} Thus, the constitutive secretion of IL-6 may be caused by a spontaneous secretion of IL-1. To investigate this possibility, AML cells (n = 3 patients) with spontaneous phosphorylation of Stat3 were cultured for 24 hours in the presence or absence of anti-IL-1. A typical example is depicted in Figure 3C. Pretreatment with anti-IL-1 for 24 hours did not reduce the spontaneous tyrosine phosphorylation

nor restore the IL-6 inducibility of Stat3 phosphorylation, indicating that IL-1 is not responsible for the spontaneous IL-6 protein secretion in the investigated AML cells.

Constitutive Stat3 activation and high IL-6 protein secretion levels correlate with high-expression levels of the Stat inhibitors SOCS-1 and SOCS-3

SOCS proteins represent a family of negative regulators of cytokine signaling that probably switch off the cytokine signal by binding to Jak proteins through SH2 domains, thereby inhibiting the activation of Stat.¹⁷⁻¹⁹ To investigate the IL-6-induced up-regulation of SOCS-1 and SOCS-3 in AML cells, we prepared cDNA of unstimulated or IL-6-stimulated cells and performed RT-PCR using specific primers for SOCS-1 and SOCS-3. SOCS-1 and SOCS-3 mRNA levels were low in unstimulated AML cells that were characterized by IL-6-inducible Stat3 phosphorylation and were quickly up-regulated by IL-6 (Figure 4, lanes 4 and 5). In contrast, AML cells characterized by high IL-6 secretion levels and constitutive Stat3 phosphorylation patterns showed high basal levels of SOCS-1 and SOCS-3, whereas exogenous added IL-6 did not further enhance the expression (Figure 4, lanes 1 and 2). Similar results were obtained in RT-PCR analyses for 2 other patients with AML with constitutive Stat3 activation (patients 1 and 14; data not shown). Surprisingly, treatment of these AML cells with anti-IL-6 for 2 hours did not result in reduced SOCS-1 and SOCS-3 mRNA levels (Figure 4, lane 3), suggesting that other cytokines able to induce the expression of SOCS-1 and SOCS-3 were secreted by these AML cells. To underscore this possibility, the cell-free supernatant of patient 11 with a constitutive Stat3 activation was collected and added to that of patient 7 without a constitutive Stat3 activation. As demonstrated in Figure 4, culturing the AML cells of patient 7 in this supernatant resulted in high and non-IL-6-inducible levels of SOCS-1 and SOCS-3 expression

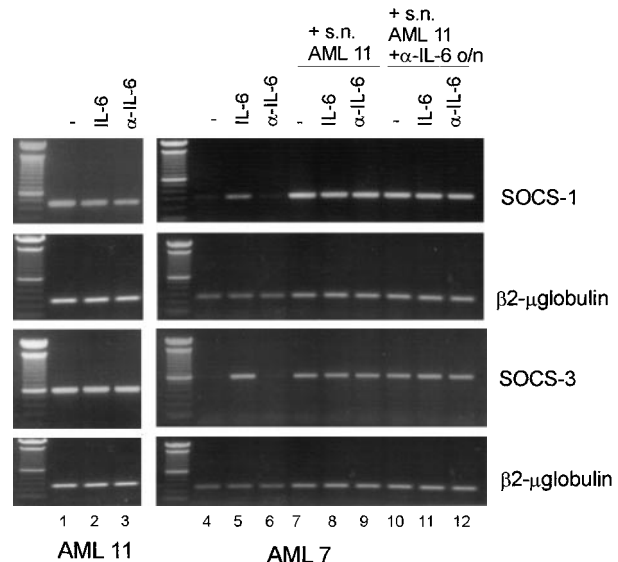


Figure 4. High IL-6 secretion levels correlate with high SOCS1 and SOCS3 expression levels. AML cells (patients 11, 7) were cultured in 12-well plates and stimulated for 1 hour with IL-6 (lanes 2, 5, 8, 11) or with anti-IL-6 for 2 hours (lanes 3, 6, 9, 12). In lanes 1 to 6, cells were cultured in RPMI 1640 for 24 hours before stimulation. In lanes 7 to 9, cells from patient 7 were cultured in the AML supernatant from patient 11. In lanes 10 to 12, cells from patient 7 were cultured in the AML supernatant from patient 11, which was depleted of IL-6 by adding anti-IL-6. Total RNA was isolated, 3 μ g RNA was reverse transcribed with M-MuLV reverse transcriptase, and cDNA was used in a PCR reaction using specific primers for SOCS-1, SOCS-3 or β 2- μ globulin as a control.

(Figure 4; lanes 7 to 9), even when it was depleted of IL-6 by applying saturating amounts of anti-IL-6 to the supernatant (Figure 4, lanes 10 to 12). Taken together, these data indicate that in AML cells characterized by high IL-6 secretion levels and constitutive Stat3 phosphorylation, SOCS-1 and SOCS-3 expression is disturbed.

Discussion

Although the exact function of IL-6-induced Stat3 signaling in hematopoietic cells is not well defined, it has been suggested that IL-6 plays an important role in the proliferation and survival of early hematopoietic progenitor cells.^{43,44} In addition, IL-6 signaling results in gene expression patterns important for lineage-restricted differentiation along the myeloid and lymphoid lineages.⁴⁵⁻⁴⁸ Particularly, Stat3 activation has been implicated in macrophage differentiation.⁴⁹ However, the effects of IL-6 on the growth and survival of AML cells are variable. In most patients, growth-supportive effects of IL-6 are described especially in conjunction with additional cytokines, whereas in some patients a growth-inhibitory effect is observed.⁵⁰⁻⁵⁴ Constitutive Stat3 activation has been demonstrated in AML and is described in 15% to 20% of patients.³³⁻³⁶ In the current study, it is demonstrated that in 25% of the patients with AML, constitutive phosphorylation of Tyr705 and Ser727 is observed that is not further inducible by IL-6. It is also demonstrated that constitutive Stat3 phosphorylation is related to the autocrine secretion of IL-6 and that a constitutive non-IL-6-inducible Stat3 activation pattern in AML is correlated with increased expression levels of SOCS-1 and SOCS-3.

IL-6-induced Stat3 transactivation involves phosphorylation of Tyr705 and Ser727 residues. Tyrosine phosphorylation allows Stat dimerization, translocation to the nucleus, and binding to target gene promoters. Although it is still unclear how Stat3 Ser727 phosphorylation is linked to transcriptional activation, it has been clearly demonstrated in many cellular settings that this residue is essential for maximal Stat3 transcriptional potential.^{14,15} It has been speculated that Stat3 Ser727 phosphorylation allows binding of specific cofactors, thus coupling the RNA polymerase II machinery to Stat transcription factors. In blast cells of patients with AML, we found a constitutive Stat3 DNA binding and phosphorylation on both Tyr705 and Ser727 in approximately 25% of the patients, demonstrating that Stat3 is not only constitutively bound to target gene promoters, it also constitutively initiates gene transcription. Recently, it has been demonstrated that Stat3 plays a key role in G1- to S-phase cell-cycle transition through the up-regulation of cyclins D2, D3, A, and cdc25A and the concomitant down-regulation of p21 and p27.³⁷ Thus, the constitutive Stat3 activation might affect proliferation and cell survival, leading to a growth advantage over normal cells. Indeed, constitutive Stat3 activation leads to higher cell survival rates and to lower susceptibility for cytostatic agents (Schuringa J.J., unpublished observations). Similar results have been described in patients with multiple myeloma whereby the constitutive Stat3 activation is associated with an

up-regulation of Bcl-xL and the concomitant prevention of apoptosis,⁵⁵ though the cause of the constitutive Stat3 activation might be different for AML cells. Furthermore, Bromberg et al⁵⁶ demonstrated that a constitutively active Stat3 mutant, in which 2 cysteine residues within the C-terminal loop of the SH2 domain are substituted, induces cellular transformation and strongly up-regulates the expression of cyclin D1, Bcl-xL, and *c-myc*. These data suggest that constitutive Stat3 activation may contribute by multiple mechanisms to the malignant phenotype of cells.

Strikingly, in the investigated AML cells, the constitutive Stat3 phosphorylation was caused by the autocrine secretion of IL-6 because treatment of anti-IL-6 resulted in a restored IL-6 inducibility of Stat3 Tyr705 and Ser727 phosphorylation. Therefore, we conclude that gp130 downstream signaling is normal in the investigated AML cells and that the constitutive Stat3 activation is not linked to oncogene activation, as has been described in cells transformed by Src, Abl, and various other oncoproteins and tumor viruses.²⁴ The cause of the constitutive expression of IL-6 in the selected number of patients with AML was not elucidated, but it seems not to have been caused by IL-1. Previous studies have demonstrated that spontaneous IL-6 secretion was linked to NF- κ B DNA binding that could not be blocked by anti-IL-1, suggesting an aberrant function or triggering of the I κ B kinases or related proteins.^{6,57,58,59}

The negative feedback loop of SOCS-1 and SOCS-3 expression, which is normally quickly up-regulated by IL-6, was constitutively activated in the patients with AML with constitutive Stat3 phosphorylation. SOCS expression was relatively high, and IL-6 did not further up-regulate SOCS mRNA levels. In line with the elevated SOCS-1 and SOCS-3 expression, the levels of Stat3 phosphorylation were lower in these patients than the IL-6-induced phosphorylation levels in AML cells without a constitutive Stat3 activation. Surprisingly, treating constitutive AML with anti-IL-6 did not result in reduced SOCS-1 and SOCS-3 mRNA levels, whereas Stat3 Tyr705 and Ser727 phosphorylation levels were reduced to basal levels. The discrepancy between both findings seems to be related to the fact that additional cytokines also regulate SOCS expression. It has been demonstrated that, among IL-6, many other cytokines and growth factors can up-regulate the expression of SOCS-1 and SOCS-3, including leukemia inhibitory factor, IL-4, IFN- γ , and granulocyte-colony-stimulating factor.^{18,19,21} However, it is intriguing that after treatment with anti-IL-6, the IL-6-induced Stat3 phosphorylation was totally restored despite the persistent expression of SOCS-1 and SOCS-3. These findings suggest that the functional activity of the negative feedback loop is not only determined by the degree of expression but may also depend on post-translational modification.

In conclusion, the data demonstrate that the autocrine and paracrine secretion of IL-6 by AML cells causes the constitutive activation of Stat3, which may have important consequences for the growth and survival characteristics of AML cells.

References

- Vellenga E, Griffin JD. The biology of acute myeloblastic leukemia. *Semin Oncol*. 1987;14:365-371.
- Look AT. Oncogenic transcription factors in the human acute leukemias. *Science*. 1997;278:1059-1064.
- Rabbitts TH. Translocations, master genes, and differences between the origins of acute and chronic leukemias. *Cell*. 1991;67:641-644.
- Rabbitts TH. Chromosomal translocations in human cancer. *Nature*. 1994;372:143-149.
- Solomon E, Borrow J, Goddard AD. Chromosome aberrations and cancer. *Science*. 1991;254:1153-1160.
- Dokter WH, Tuyt L, Sierdsema SJ, Esselink MT, Vellenga E. The spontaneous expression of interleukin-1 beta and interleukin-6 is associated with spontaneous expression of AP-1 and NF-kappa B transcription factor in acute myeloblastic leukemia cells. *Leukemia*. 1995;9:425-432.
- Murakami M, Hibi M, Nakagawa N, et al. IL-6-

- induced homodimerization of gp130 and associated activation of a tyrosine kinase. *Science*. 1993;260:1808-1810.
8. Taga T, Hibi M, Hirata Y, et al. Interleukin-6 triggers the association of its receptor with a possible signal transducer, gp130. *Cell*. 1989;58:573-581.
 9. Yamasaki K, Taga T, Hirata Y, et al. Cloning and expression of the human interleukin-6 (BSF-2/IFN beta 2) receptor. *Science*. 1988;241:825-828.
 10. Gearing DP, Comeau MR, Friend DJ, et al. The IL-6 signal transducer, gp130: an oncostatin M receptor and affinity converter for the LIF receptor. *Science*. 1992;255:1434-1437.
 11. Ip NY, Nye SH, Boulton TG, et al. CNTF and LIF act on neuronal cells via shared signaling pathways that involve the IL-6 signal transducing receptor component gp130. *Cell*. 1992;69:1121-1132.
 12. Yin T, Taga T, Tsang ML, Yasukawa K, Kishimoto T, Yang YC. Involvement of IL-6 signal transducer gp130 in IL-11-mediated signal transduction. *J Immunol*. 1993;151:2555-2561.
 13. Schindler C, Darnell JEJ. Transcriptional responses to polypeptide ligands: the JAK-STAT pathway. *Annu Rev Biochem*. 1995;64:621-651.
 14. Wen Z, Zhong Z, Darnell JEJ. Maximal activation of transcription by Stat1 and Stat3 requires both tyrosine and serine phosphorylation. *Cell*. 1995;82:241-250.
 15. Wen Z, Darnell JEJ. Mapping of Stat3 serine phosphorylation to a single residue (727) and evidence that serine phosphorylation has no influence on DNA binding of Stat1 and Stat3. *Nucl Acids Res*. 1997;25:2062-2067.
 16. Schuringa JJ, Jonk LJC, Dokter WHA, Vellenga E, Kruijer W. IL-6 induced STAT3 transactivation and Serine 727 phosphorylation involves Vav, Rac, and SEK/MKK-4 as signal transduction components. *Biochem J*. 2000;347:89-96.
 17. Endo TA, Masuhara M, Yokouchi M, et al. A new protein containing an SH2 domain that inhibits JAK kinases. *Nature*. 1997;387:921-924.
 18. Naka T, Narazaki M, Hirata M, et al. Structure and function of a new STAT-induced STAT inhibitor. *Nature*. 1997;387:924-929.
 19. Starr R, Willson TA, Viney EM, et al. A family of cytokine-inducible inhibitors of signalling. *Nature*. 1997;387:917-921.
 20. Hilton DJ, Richardson RT, Alexander WS, et al. Twenty proteins containing a C-terminal SOCS box form five structural classes. *Proc Natl Acad Sci U S A*. 1998;95:114-119.
 21. Nicholson SE, Willson TA, Farley A, et al. Mutational analyses of the SOCS proteins suggest a dual domain requirement but distinct mechanisms for inhibition of LIF and IL-6 signal transduction. *EMBO J*. 1999;18:375-385.
 22. Song MM, Shuai K. The suppressor of cytokine signaling (SOCS) 1 and SOCS3 but not SOCS2 proteins inhibit interferon-mediated antiviral and antiproliferative activities. *J Biol Chem*. 1998;273:35,056-35,062.
 23. Starr R, Hilton DJ. Negative regulation of the JAK/STAT pathway. *Bioessays*. 1999;21:47-52.
 24. Cao X, Tay A, Guy GR, Tan YH. Activation and association of Stat3 with Src in v-Src-transformed cell lines. *Mol Cell Biol*. 1996;16:1595-1603.
 25. Tuyt LML, Bregman K, Lummen C, Dokter WH, Vellenga E. Differential binding activity of the transcription factor LIL-STAT in immature and differentiated normal and leukemic myeloid cells. *Blood*. 1998;92:1364-1373.
 26. Turkson J, Bowman T, Garcia R, Caldenhoven E, De-Groot RP, Jove R. Stat3 activation by Src induces specific gene regulation and is required for cell transformation. *Mol Cell Biol*. 1998;18:2545-2552.
 27. Danial NN, Pernis A, Rothman PB. Jak-STAT signaling induced by the v-abl oncogene. *Science*. 1995;269:1875-1877.
 28. Garcia R, Yu CL, Hudnall A, et al. Constitutive activation of Stat3 in fibroblasts transformed by diverse oncoproteins and in breast carcinoma cells. *Cell Growth Differ*. 1997;8:1267-1276.
 29. Garcia R, Jove R. Activation of STAT transcription factors in oncogenic tyrosine kinase signaling. *J Biomed Sci*. 1998;5:79-85.
 30. Migone TS, Lin JX, Cereseto A, et al. Constitutively activated Jak-STAT pathway in T cells transformed with HTLV-I. *Science*. 1995;269:79-81.
 31. Yu CL, Meyer DJ, Campbell GS, et al. Enhanced DNA-binding activity of a Stat3-related protein in cells transformed by the Src oncoprotein. *Science*. 1995;69:81-83.
 32. Zong C, Yan R, August A, Darnell JEJ, Hanafusa H. Unique signal transduction of Eyk: constitutive stimulation of the JAK-STAT pathway by an oncogenic receptor-type tyrosine kinase. *EMBO J*. 1996;15:4515-4525.
 33. Gouilleux GV, Gouilleux F, Desaint C, et al. STAT-related transcription factors are constitutively activated in peripheral blood cells from acute leukemia patients. *Blood*. 1996;87:1692-1697.
 34. Gouilleux GV, Debierre GF, Gouilleux F, et al. Activated Stat related transcription factors in acute leukemia. *Leuk Lymphoma*. 1997;28:83-88.
 35. Xia Z, Baer MR, Block AW, Baumann H, Wetzler M. Expression of signal transducers and activators of transcription proteins in acute myeloid leukemia blasts. *Cancer Res*. 1998;58:3173-3180.
 36. Frank DA, Mahajan S, Ritz J. B lymphocytes from patients with chronic lymphocytic leukemia contain signal transducer and activator of transcription (STAT) 1 and STAT3 constitutively phosphorylated on serine residues. *J Clin Invest*. 1997;100:3140-3148.
 37. Fukada T, Ohtani T, Yoshida Y, et al. STAT3 orchestrates contradictory signals in cytokine-induced G1 to S cell-cycle transition. *EMBO J*. 1998;17:6670-6677.
 38. Benett JM, Catovski D, Daniel MT, et al. Proposal for the classification of the acute leukemia (FAB cooperation group). *Br J Haematol*. 1976;33:451.
 39. Wagteveld AJ, Esselink MT, Limburg P, Halie MR, Vellenga E. The effects of IL-1 beta and IL-4 on the proliferation and endogenous secretion of growth factors by acute myeloblastic leukemic cells. *Leukemia*. 1992;6:1020-1024.
 40. Schreiber E, Matthias P, Muller MM, Schaffner W. Rapid detection of octamer binding proteins with "mini-extracts," prepared from a small number of cells. *Nucl Acids Res*. 1989;17:6419.
 41. Griffin JD, Rambaldi A, Vellenga E, Young DC, Ostapovicz D, Cannistra SA. Secretion of interleukin-1 by acute myeloblastic leukemia cells in vitro induces endothelial cells to secrete colony stimulating factors. *Blood*. 1987;70:1218-1221.
 42. Van-Damme J, Opdenakker G, Simpson RJ, et al. Identification of the human 26-kD protein, interferon beta 2 (IFN-beta 2), as a B cell hybridoma/plasmacytoma growth factor induced by interleukin 1 and tumor necrosis factor. *J Exp Med*. 1987;165:914-919.
 43. Hirano T. Interleukin 6 and its receptor: ten years later. *Int Rev Immunol*. 1998;16:249-284.
 44. Kopf M, Baumann H, Freer G, et al. Impaired immune and acute-phase responses in interleukin-6-deficient mice. *Nature*. 1994;368:339-342.
 45. Jansen JH, Kluin NJ, Van-Damme J, Wientjens GJ, Willemze R, Fibbe WE. Interleukin 6 is a permissive factor for monocytic colony formation by human hematopoietic progenitor cells. *J Exp Med*. 1992;175:1151-1154.
 46. Kimura H, Ishibashi T, Uchida T, Maruyama Y, Friese P, Burstein SA. Interleukin 6 is a differentiation factor for human megakaryocytes in vitro. *Eur J Immunol*. 1990;20:1927-1931.
 47. Asano S, Okano A, Ozawa K, et al. In vivo effects of recombinant human interleukin-6 in primates: stimulated production of platelets. *Blood*. 1990;75:1602-1605.
 48. Pojda Z, Tsuboi A. In vivo effects of human recombinant interleukin 6 on hemopoietic stem and progenitor cells and circulating blood cells in normal mice. *Exp Hematol*. 1990;18:1034-1037.
 49. Nakajima K, Yamanaka Y, Nakae K, et al. A central role for Stat3 in IL-6-induced regulation of growth and differentiation in M1 leukemia cells. *EMBO J*. 1996;15:3651-3658.
 50. Akashi K, Harada M, Shibuya T, et al. Effects of interleukin-4 and interleukin-6 on the proliferation of CD34+ and CD34- blasts from acute myelogenous leukemia. *Blood*. 1991;78:197-204.
 51. Koistinen P, Saily M, Poromaa N, Savolainen ER. Complex effects of interleukin 6 on clonogenic blast cell growth in acute myeloblastic leukemia. *Acta Haematol*. 1997;98:14-21.
 52. Schoot van der CE, Jansen P, Poorter M, et al. Interleukin-6 and interleukin-1 production in acute leukemia with monocytoid differentiation. *Blood*. 1989;74:2081-2087.
 53. Hoang T, Haman A, Goncalves O, Wong GG, Clark SC. Interleukin-6 enhances growth factor-dependent proliferation of the blast cells of acute myeloblastic leukemia. *Blood*. 1988;72:823-826.
 54. Saily M, Koistinen P, Savolainen ER. The soluble form of interleukin-6 receptor modulates cell proliferation by acute myeloblastic leukemia blast cells. *Ann Hematol*. 1999;78:173-179.
 55. Curtis DJ, Metcalf D, Alexander B, Begley CG. Leukemic cells from murine myeloid leukemia display an intrinsic ability for autonomous proliferation. *Exp Hematol*. 2000;28:36-45.
 56. Catlett FR, Landowski TH, Oshiro MM, et al. Constitutive activation of Stat3 signaling confers resistance to apoptosis in human U266 myeloma cells. *Immunity*. 1999;10:105-115.
 57. Bromberg JF, Wrzeszczynska MH, Devgan G, et al. Stat3 as an oncogene. *Cell*. 1999;98:295-303.
 58. Tuyt LM, de-Wit H, Koopmans SB, Sierdsema SJ, Vellenga E. Effects of IL-3 and LPS on transcription factors involved in the regulation of IL-6 mRNA. *Br J Haematol*. 1996;92:521-529.
 59. Tuyt LM, Dokter WH, Birkenkamp K, et al. Extracellular-regulated kinase 1/2, Jun N-terminal kinase, and c-Jun are involved in NF-kappa B-dependent IL-6 expression in human monocytes. *J Immunol*. 1999;162:4893-4902.