

# Expression Trapping: Identification of Novel Genes Expressed in Hematopoietic and Endothelial Lineages by Gene Trapping in ES Cells

By William L. Stanford, Georgina Caruana, Katherine A. Vallis, Maneesha Inamdar, Michihiro Hidaka, Victoria L. Bauth, and Alan Bernstein

We have developed a large-scale, expression-based gene trap strategy to perform genome-wide functional analysis of the murine hematopoietic and vascular systems. Using two different gene trap vectors, we have isolated embryonic stem (ES) cell clones containing *lacZ* reporter gene insertions in genes expressed in blood island and vascular cells, muscle, stromal cells, and unknown cell types. Of 79 clones demonstrating specific expression patterns, 49% and 16% were preferentially expressed in blood islands and/or the vasculature, respectively. The majority of ES clones that

expressed *lacZ* in blood islands also expressed *lacZ* upon differentiation into hematopoietic cells on OP9 stromal layers. Importantly, the in vivo expression of the *lacZ* fusion products accurately recapitulated the observed in vitro expression patterns. Expression and sequence analysis of representative clones suggest that this approach will be useful for identifying and mutating novel genes expressed in the developing hematopoietic and vascular systems.

© 1998 by The American Society of Hematology.

**T**HE PHYSICAL AND genetic analysis of mammalian genes is yielding a vast amount of information concerning the 80,000 or so proteins encoded by our genomes. Clearly, a major challenge for the immediate future will be to understand the individual functions of each of these proteins and to place them within the correct molecular circuitry in the appropriate cell types. These insights will provide the basis for understanding both normal physiological processes and human disease. Although many mammalian proteins are related in sequence and biochemical functions to proteins found in other more experimentally tractable organisms, knowledge of the biological function of these proteins will require direct analysis within the context of an intact mammal, because the different members of large mammalian gene families function in diverse cell types during development and in the adult. In addition, sequence similarity or homology is neither a necessary nor a sufficient predictor of similarity of biological function.

The large amount of genetic information in mammalian organisms and the cellular complexity of the developing embryo require new experimental approaches that can rapidly and efficiently identify and analyze genes. In the mouse, the existing repertoire of naturally occurring and induced mutations has provided important insights into the molecular mechanisms that regulate embryonic development and cellular differentia-

tion within the hematopoietic system.<sup>1-3</sup> However, positional cloning of each of these mutations is still a significant and labor-intensive undertaking.

The contemporaneous development of totipotent embryonic stem (ES) cell lines and homologous recombination in mammalian cells has provided an entirely new approach to generate new mutations in vitro before introduction of these mutations into the mouse germline.<sup>4,5</sup> However, targeted mutagenesis is also labor intensive and time-consuming. In addition, gene targeting requires prior detailed knowledge of the sequence and genomic organization of each gene and hence is not easily applicable to genome-wide approaches.

A third strategy involves the random insertion of exogenous DNA into single sites in the mammalian genome.<sup>6</sup> When applied to ES cells, this insertional mutagenesis approach, or gene trapping, provides a genome-wide strategy for functional genomics in a mammal. In this report, we have combined gene trapping with the developmental potential of ES cells to differentiate in vitro into a wide variety of distinct cell lineages<sup>7-9</sup> to trap genes that are expressed in hematopoietic and vascular endothelial cells. This experimental approach, which we have termed expression trapping, offers a novel strategy to identify, mutate, and characterize large numbers of genes on the basis of their cell lineage-specific expression.

## MATERIALS AND METHODS

**Vectors.** Two gene trap vectors were used for this study and are shown in Fig 1. The vector PT1-ATG (PT1 henceforth) contains the *En-2* splice acceptor site positioned immediately upstream of the *lacZ* reporter gene with an ATG translational start site.<sup>10</sup> Immediately downstream of the *lacZ* gene, the *phosphoglycerate kinase-1* (*PGK-1*) promoter drives the bacterial *neomycin-resistance* (*neo*) gene. The vector GT1.8geo contains the *En-2* splice acceptor site immediately upstream of a *lacZ-neo* fusion gene.<sup>11</sup> The point mutation in the *neo* fragment of SA $\beta$ geo<sup>12</sup> is not contained in GT1.8geo vector, thereby allowing neomycin resistance at a lower level of endogenous gene expression than the SA $\beta$ geo vector.

**Generation of trapped ES cell lines.** R1 ES cells were maintained on primary embryonic fibroblasts as previously described.<sup>13</sup> After electroporation and selection in G418, drug-resistant colonies were transferred to 96-well plates and expanded to confluency. Clones were passaged to two 96-well plates and one set of 24-well plates. Once clones reached confluency, one 96-well plate was frozen, the second 96-well plate was assayed for  $\beta$ -galactosidase ( $\beta$ -gal) expression, and the 24-well plates were used for attached EB differentiation cultures. Expression of the *lacZ* reporter gene was carefully determined both in

From the Program in Molecular Biology and Cancer, Samuel Lunenfeld Research Institute, Mount Sinai Hospital, Toronto, Ontario, Canada; the Ontario Cancer Institute, Toronto, Ontario, Canada; the Department of Molecular and Medical Genetics, University of Toronto, Toronto, Ontario, Canada; and the Department of Biology, University of North Carolina, Chapel Hill, Chapel Hill, NC.

Submitted May 18, 1998; accepted August 10, 1998.

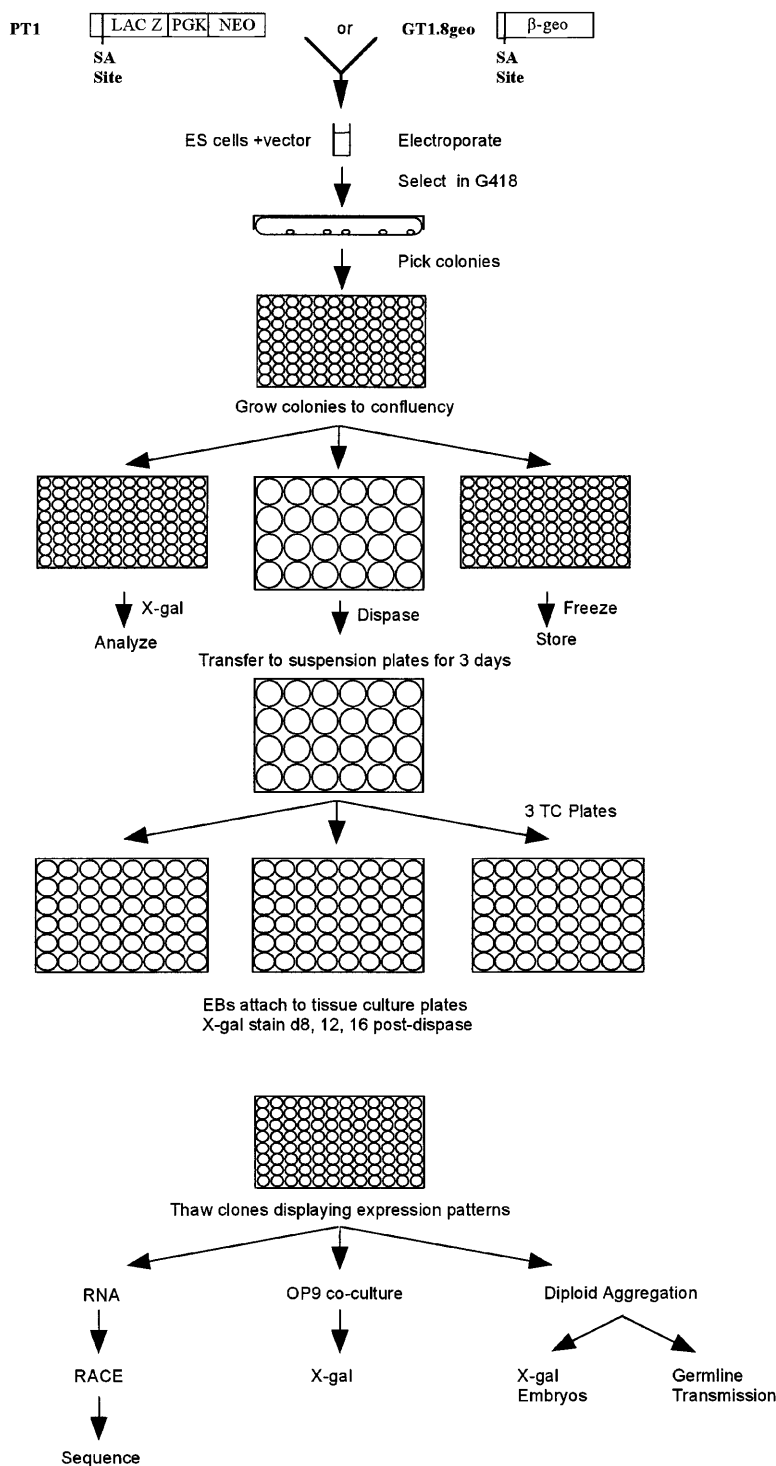
Supported by grants from Bristol-Myers Squibb (Princeton, NJ), the Leukemia Society of America (New York, NY), the National Institutes of Health (Bethesda, MD), and the Terry Fox Foundation (Vancouver, British Columbia, Canada).

Address reprint requests to Alan Bernstein, PhD, Samuel Lunenfeld Research Institute, Mount Sinai Hospital, 600 University Ave, Toronto, Ontario, M5G 1X5, Canada; e-mail: bernstein@mshri.on.ca.

The publication costs of this article were defrayed in part by page charge payment. This article must therefore be hereby marked "advertisement" in accordance with 18 U.S.C. section 1734 solely to indicate this fact.

© 1998 by The American Society of Hematology.

0006-4971/98/9212-0025\$3.00/0



**Fig 1.** Schematic diagram depicting gene trap screening strategy. Two gene trap vectors were used. The PT1 vector contains a promoterless *lacZ* gene immediately downstream of a splice acceptor (SA) site and the *neo<sup>R</sup>* gene driven by the *PGK-1* promoter. Although not all *neo<sup>R</sup>* colonies represented trapped genes, all genes could be trapped regardless of their expression in undifferentiated ES cells using the PT1 vector. The GT1.8geo vector contains a promoterless *lacZ-neo<sup>R</sup>* (*β-geo*) fusion gene immediately downstream of an SA site. Although all *neo<sup>R</sup>* colonies represented trapped genes, only genes expressed in undifferentiated ES cells could be trapped. ES cells were electroporated with either vector and G418<sup>R</sup> clones were picked into 96-well plates and grown to confluency. The clones were passaged 1:3 into two 96-well plates and one set of 24-well plates. The cells from one 96-well plate were frozen, and the cells from the second 96-well plate were assayed for *lacZ* expression. The colonies in the 24-well plates were treated with dispase and then transferred to suspension 24-well plates and grown in suspension for 3 days; EBs were then transferred to 48-well tissue culture (TC) plates. Cultures were fed every other day and analyzed for *lacZ* expression 8, 12, and 16 days after dispase treatment. Clones exhibiting expression patterns were thawed and grown for RNA isolation, RACE polymerase chain reaction (PCR) and sequencing, and/or OP9 coculture and subsequent *lacZ* expression, and/or diploid aggregation for in vivo *lacZ* expression analysis and germline transmission.

undifferentiated and differentiated ES cells. Clones with observable expression patterns were refrozen and, in some cases, reanalyzed. In addition, the expression patterns were photographed and cataloged.

**Reporter gene expression.** β-gal activity of cultures was detected as follows. Cells were rinsed in 100 mmol/L Na<sub>2</sub>HPO<sub>4</sub> (pH 7.5) and then fixed in 0.2% glutaraldehyde, 5 mmol/L EGTA, 2 mmol/L MgCl<sub>2</sub>, and 100 mmol/L Na<sub>2</sub>HPO<sub>4</sub> for 5 minutes. The cells were washed 3 times for 5 minutes each in 2 mmol/L MgCl<sub>2</sub>, 0.02% NP-40, and 100 mmol/L

Na<sub>2</sub>HPO<sub>4</sub>. The cells were stained with X-gal overnight at 37°C. β-gal activity was detected in embryos as described above, except that the fixative included 1.5% formaldehyde and embryos were fixed for 30 minutes to 1 hour and washed 3 times for 15 minutes each wash.

**Attached EB screen.** ES cells were allowed to differentiate into attached EBs as previously described,<sup>14</sup> with several modifications. Clones were grown to confluency in 24-well plates, treated with dispase (1:1 dilution in phosphate-buffered saline [PBS]; Collaborative Re-

search VWR, Mississauga, Ontario, Canada), washed 3 times in PBS, and grown in suspension in Ultra Low Cluster 24-well plates (COSTAR, Cambridge, MA) in ES media without Leukemic Inhibitory Factor (LIF). On day 3 after disperse treatment, 5 to 10 embryoid bodies were transferred to 48-well tissue culture plates (Falcon, Mississauga, Ontario, Canada). Cultures were fed every other day with fresh media.  $\beta$ -gal activity was determined on days 8, 12, and 16 after disperse.

**OP9 induction assay.** ES cells were allowed to differentiate on the OP9 stromal cell line as previously described,<sup>9</sup> with several modifications. ES clones were differentiated on OP9 stroma in replica wells of 6-well plates ( $10^4$  ES cells/well) for 5 days to generate mesodermal colonies. A single-cell suspension was prepared using trypsin from one well for each clone, and  $10^5$  mesodermal cells were replated onto OP9 stroma in two wells of a 6-well plate and grown for 3 days. On day 8, nonadherent hematopoietic cells were transferred from both wells to one new well for an additional 3 days.  $\beta$ -gal activity was determined on mesodermal cells on the duplicate day 5 OP9 plate and on adherent hematopoietic cells on days 8 and 11.

**5' RACE.** RNA was prepared from either undifferentiated or differentiated cells using Trizol (GIBCO/BRL, Grand Island, NY) according to the manufacturer's instructions. 5' RACE was performed using the 5' RACE kit (GIBCO/BRL), according to manufacturer's instructions with modifications previously described.<sup>15</sup> 5' RACE products were subcloned into the CloneAmp plasmid (GIBCO/BRL) and sequenced using the Sequenase kit (Pharmacia, Uppsala, Sweden). Sequences were analyzed by comparison to the nonredundant GenBank and EST of NCBI using the BLASTN program ([www.ncbi.nlm.nih.gov/BLAST/](http://www.ncbi.nlm.nih.gov/BLAST/)).

**Generation of chimeras.** ES cells were aggregated with diploid embryos as described,<sup>16</sup> transferred into pseudo-pregnant ICR females, harvested at embryonic day (e) 9.5 to 14.5, and stained for  $\beta$ -gal activity. About half of the diploid embryos were allowed to mature to term for germline transmission. Chimeric males were bred to ICR females, and tail DNA of F<sub>1</sub> and F<sub>2</sub> offspring was analyzed by Southern blotting and hybridization to *En-2* or RACE fragment probes.

## RESULTS

**Identification of trapped gene expression patterns.** In the absence of leukemic inhibitory factor, ES colonies spontaneously differentiate into embryoid bodies (EBs) in suspension culture. The complex structure of the EB contains all three germ layers and resembles the extra-embryonic yolk sac both morphologically and transcriptionally.<sup>7,17-19</sup> As in the yolk sac, the mesoderm of the EB gives rise to angioblastic cords that form morphologically distinguishable blood islands containing primitive hematopoietic cells surrounded by vascular endothelium.<sup>8</sup> Because of the developmental potential of EBs, the differentiation of ES cells into EBs has provided an excellent model to study the effects of targeted mutations on hematopoietic, vascular, and myoblast lineages.<sup>20-22</sup> Thus, the EB should provide an excellent in vitro expression screen of gene trap clones for insertions in genes expressed in hematopoietic and vascular lineages. However, EBs grown in suspension are difficult to manipulate in clonal cultures and the outer layer of visceral endoderm precludes the identification of small numbers of *lacZ* positive cells. Therefore, we modified the EB culture system so that EBs grow attached to tissue culture plastic.<sup>14</sup> This attached or flat culture method places the visceral endoderm layer beneath the blood islands and renders the EB more accessible to observation and experimental manipulation.

The gene trap screening strategy that we used is shown in Fig 1. The PT1 gene trap vector, which contains a splice acceptor

site immediately upstream of a promoterless *lacZ* reporter gene and a *neo<sup>R</sup>* gene driven by *PGK-1* promoter, was introduced into ES cells (clone R1) by electroporation. After G418 selection, drug-resistant colonies were transferred to 96-well plates and expanded to confluency. Clones were replica plated to two 96-well plates and one set of 24-well plates. Once clones reached confluency, one 96-well plate was frozen, the second 96-well plate was assayed for  $\beta$ -gal expression, and the 24-well plates were used for attached EB differentiation cultures. Each *neo<sup>R</sup>* colony represented a vector integration event. If the vector integrated within an intron, a spliced fusion transcript between *lacZ* and the endogenous gene would be generated upon transcriptional activation of the trapped gene. Because all ES cells that had an integrated PT1 vector were G418 resistant regardless of whether the integration occurred within a gene, genes that were not expressed in undifferentiated ES cells could be trapped using this vector. Five percent (37/779) of the *neo<sup>R</sup>* clones tested expressed *lacZ* in undifferentiated ES cells, of which 30 clones continued to be expressed in at least some cells during EB differentiation (Table 1). By comparison, 61 clones (8%) that did not express *lacZ* as undifferentiated ES cells demonstrated *lacZ* expression during EB differentiation (Table 1). Of the *neo<sup>R</sup>* clones that expressed *lacZ* as undifferentiated or differentiated ES cells, one-third (32 clones) exhibited a restricted pattern of expression (Table 1). The expression patterns of these clones can be grouped into seven categories (Table 2). More than one third of these clones were expressed in blood islands and/or the vasculature; in contrast, stromal and muscle cells each represented only 3% of the clones displaying restricted expression patterns. In addition, 9% of these clones expressed *lacZ* constitutively in virtually all undifferentiated and differentiated cells. The remaining clones exhibited restricted patterns of expression in a cell type(s) that has not yet been identified.

In a second series of experiments, we used the GT1.8geo vector (Fig 1) that contains a splice-acceptor site immediately upstream of a promoterless  $\beta$ -gal-*neo* fusion gene (or *geo*). Thus, unlike the PT1 vector, all *neo<sup>R</sup>* clones selected after

**Table 1. Summary of Attached EB Primary Gene Trap Screen**

Vector	Undifferentiated	Embryoid Bodies	No. (%)
PT1	Blue*	Blue	30 (4)
GT18.geo			159 (31)
PT1	Blue	White	7 (1)
GT18.geo			13 (3)
PT1	White	Blue	61 (8)
GT18.geo			181 (35)
PT1	White	White	681 (87)
GT18.geo			156 (31)
		PT1	GT1.8geo
Total no. of Neo <sup>R</sup> clones		779 (100)	509 (100)
Total blue clones		98 (13)	353 (69)
Identifiable patterns among $\beta$ -gal-positive clones†		32 (33)	47 (13)

\*Blue indicates detectable  $\beta$ -gal activity.

†Percentage was determined by dividing the number of clones with identifiable patterns of *lacZ* expression by the total number of clones demonstrating  $\beta$ -gal activity.

**Table 2. Patterns of Expression in Attached EBs**

Type	PT1-ATG	GT1.8
Blood island*	31%	40%
Endothelial	3%	4%
Blood island and endothelial*	3%	19%
Stroma	3%	4%
Muscle	6%	0%
Constitutive	9%	19%
Unknown cell type	45%	13%

\*Seventy percent of clones expressing *lacZ* in blood islands express *lacZ* in hematopoietic cells in op9 induction assay.

introduction of the GT1.8geo vector represented integrations into genes that were transcriptionally active in undifferentiated ES cells. Accordingly, a much higher proportion of the GT1.8geo clones (34% v 5% for PT1) expressed detectable levels of  $\beta$ -gal activity in undifferentiated ES cells (ie, Blue; Table 1). Of those, 159 clones continued to express *lacZ* in at least some cells during EB differentiation. Of the 337 *neo*<sup>R</sup> clones that expressed geo at levels too low to detect *lacZ* expression (ie, White; Table 1) as undifferentiated ES cells, more than half upregulated expression of *lacZ* in a portion of differentiated cells in EB cultures. Of the 353 GT1.8geo clones that expressed *lacZ*, 47 clones displayed an obvious pattern of expression (Tables 1 and 2). The majority of the pattern-expressing clones expressed *lacZ* in the blood islands and/or the endothelium (Table 2).

In contrast to EB body differentiation in which ES cells differentiate into all three germ layers that eventually give rise to many lineages, including hematopoietic and vascular cells, ES cells grown in coculture with OP9 stromal cells differentiate into mesodermal colonies that, when replated, differentiate into hematopoietic cells.<sup>9,23</sup> All gene trap cell lines that demonstrated *lacZ* expression in blood islands were reanalyzed by differentiating ES cells in replicate OP9 stromal cell cultures. ES-derived mesodermal colonies expressing brachyury (M. Hidaka, unpublished observations) were apparent by day 3 of culture. On day 5, a single-cell suspension of a replicate culture was prepared and replated onto OP9 cells. Primitive erythrocytes and multipotential precursors differentiated from the

mesodermal precursors within the next 2 to 3 days and single lineage precursors predominated the cultures by day 11<sup>9,23</sup> (M. Hidaka, unpublished observations). Cultures were assayed for *lacZ* expression at days 5, 8, and 11. The majority of blood island positive clones (70%) expressed *lacZ* in hematopoietic cells when cultured on an OP9 feeder layer (Table 2).

*Identification of trapped genes.* To determine the DNA sequence of the trapped genes, RNA was prepared from either differentiated or undifferentiated ES clones and used to perform 5' RACE.<sup>24</sup> The RACE products of 11 *lacZ* fusion transcripts were cloned and sequenced. Table 3 summarizes the *lacZ* expression pattern, the gene trap vector, and sequence information for each clone. Eight of the RACE product sequences corresponded to novel genes, of which four shared similarity with EST sequences. The sequences of three of the trapped genes corresponded to genes that encode known protein products: *Mena*, *Karyopherin*  $\beta$ 3, and *5'GMP synthetase*. Clone K18E2 encodes *Mena*, the mammalian homologue of *Drosophila Enabled* (*ena*), which was originally cloned by a genetic screen for suppressors of Abl-dependent phenotypes.<sup>25,26</sup> In clone K18E2, the PT1 vector has integrated into the first intron of *Mena*, which is downstream of the initiation codon and, therefore, should result in a null mutation. Clone B2C3 encodes the murine homologue of karyopherin/importin  $\beta$ 3 and yeast Pse1p,<sup>27</sup> proteins that are involved in the transport of proteins and mRNA across the nuclear membrane.<sup>28,29</sup> The RACE product suggests that a fusion protein was generated from the N-terminal 312 amino acids and *lacZ*. Mutational analysis of *Xenopus* karyopherin- $\beta$  suggests that this fusion protein should bind weakly to the nuclear pore complex and to RanGTP but not to karyopherin- $\alpha$ <sup>28</sup> and may act as a weak dominant negative mutation. In ES clone GC10G7, the GT1.8geo vector has integrated within the 3' coding region of the gene for guanosine 5'-monophosphate (GMP) synthetase. GMP-synthetase catalyzes the amination of xanthosine 5'-monophosphate to form GMP in the presence of glutamine and ATP. Although GMP-synthetase is expressed in many cell types in the adult, we observed high levels of  $\beta$ -gal activity only in endothelial cells and a population of hematopoietic cells (Table 3).

**Table 3. Race Product Analysis**

Clone	Vector	LacZ Expression Pattern			Identity
		In Vitro*	In Vivo†		
K17B1	PT1-ATG	Muscle	Muscle, endoderm		Novel ORF
K17G2	PT1-ATG	Hematopoietic, vascular, blood island	Hematopoietic, vascular, nervous system, myocardium		EST
K18E2	PT1-ATG	Constitutive	Constitutive except hepatocytes		Mena
K18F3	PT1-ATG	Muscle	Myocardium		Novel ORF
K20D4	PT1-ATG	Vascular	ND		Endothelial EST
B2C3	GT1.8geo	Hematopoietic, vascular	ND		Karyopherin $\beta$ 3
B2D2	GT1.8geo	Blood island, vascular	ND		Embryo EST
GC10A2	GT1.8geo	Hematopoietic, blood island	ND		Novel ORF
GC10G7	GT1.8geo	Vascular	ND		5'GMP synthetase
GC11C7	GT1.8geo	Hematopoietic	Heart, forebrain, otic and optic vesicles, mandibular		ES cell and placenta ESTs
GC11E10	GT1.8geo	Hematopoietic, blood island, vascular	Hematopoietic, vascular, heart		Novel ORF

Abbreviation: ND, not determined.

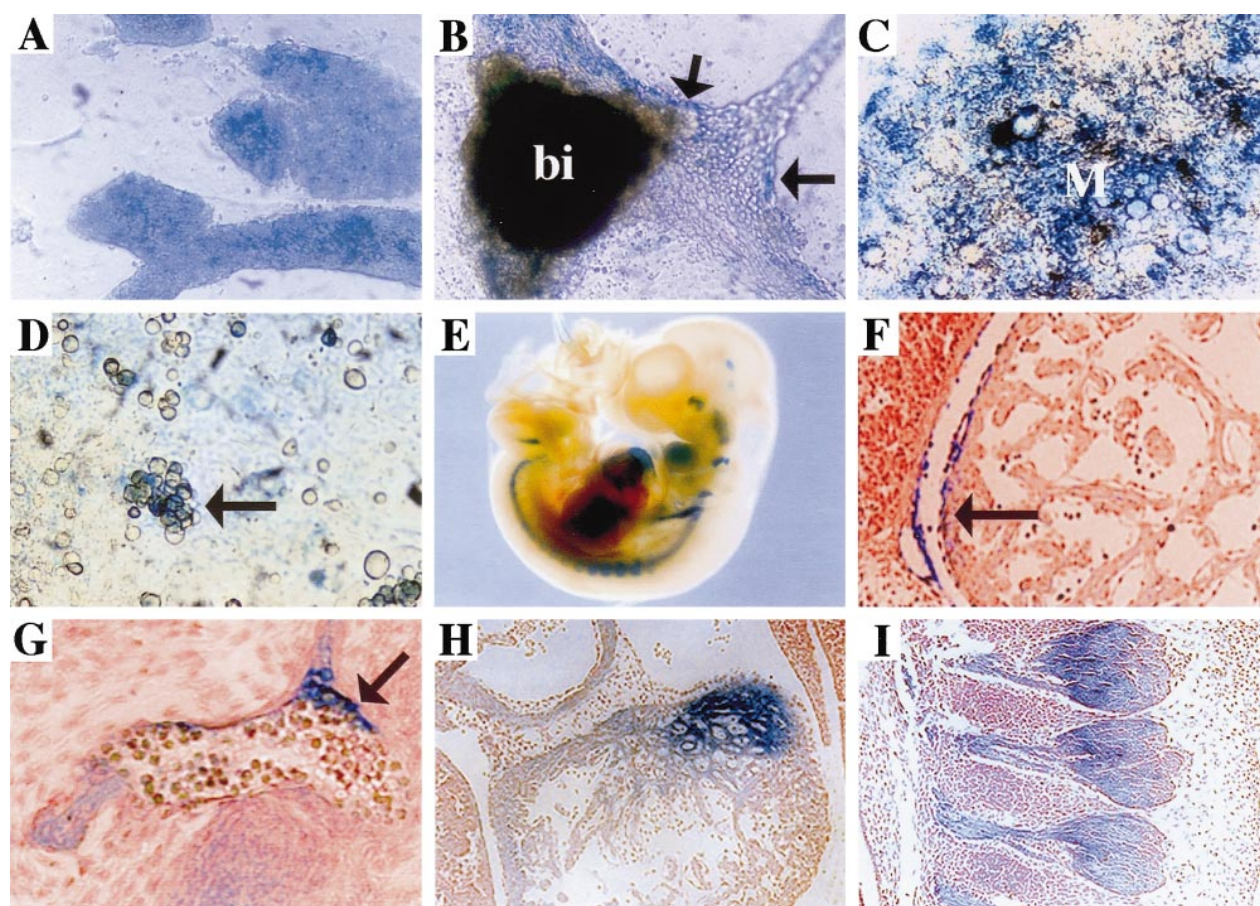
\*In vitro analysis was performed by analysis of attached EB cultures and op9 cultures.

†In vivo analysis was performed using diploid or tetraploid aggregation chimeric or F<sub>1</sub> embryos and killing between e9.5 and e14.5.

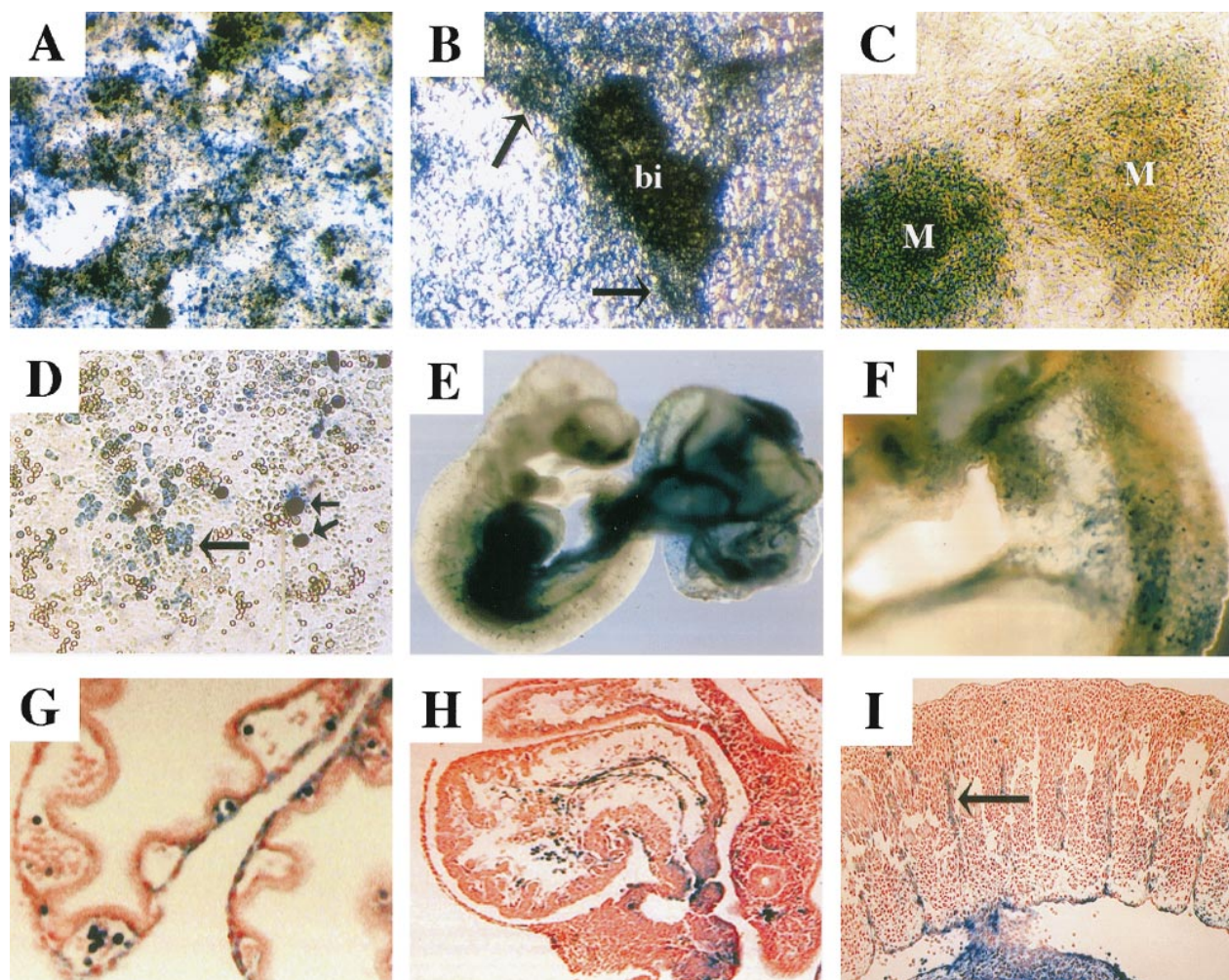
*In vitro and in vivo expression of selected clones.* Previous studies using these vectors have demonstrated that the *lacZ* fusion protein expression accurately represents wild-type expression of the trapped gene.<sup>15,30,31</sup> To determine if the patterns of expression in vitro were a good predictor of in vivo expression, selected ES clones were aggregated with diploid embryos to generate chimeric mice. Analysis of *lacZ* reporter gene expression was performed first on chimeric embryos to assess quickly expression patterns and subsequently was confirmed in F<sub>1</sub> embryos (summarized along with sequence analysis in Table 3). In this report, we present three clones that correspond to a sequence homologous to several ESTs (K17G2), a completely novel gene (GC11E10), and *Mena* (K18E2). K17G2 was isolated using the PT1 vector and displayed significant sequence similarity to several ESTs from human, rodent, *Drosophila*, and yeast cDNA libraries. *K17G2-lacZ* was expressed at low to medium levels in undifferentiated ES cells (Fig 2A), whereas its expression was restricted to blood islands (labeled bi) and some associated endothelial cells (arrows) in attached EBs (Fig 2B). Differentiation on OP9 stromal cells showed that *K17G2-lacZ* was expressed in some mesodermal (labeled M)

and hematopoietic cells (arrow; Fig 2C and D, respectively). To analyze the expression pattern of *K17G2-lacZ* in vivo, K17G2 ES cells were used to generate chimeric mice. As predicted by in vitro expression, *K17G2-lacZ* was expressed by embryonic vasculature (arrow) including the pericardium (arrow) as well as circulating blood cells (Fig 2F and G) in e12.5 embryos. In the adult, *K17G2-lacZ* expression was observed in splenocytes, thymocytes, and bone marrow cells and in the vasculature, including the endocardium as well as the pericardium. In addition, analysis of K17G2 F<sub>1</sub> embryos showed additional tissues that expressed the *K17G2-lacZ* fusion product (Fig 2E). For example, the *lacZ* fusion product was expressed in the myocardium and the dorsal root ganglia (Fig 2H and I, respectively). Brother-sister matings of K17G2 heterozygous littermates failed to produce viable homozygous mice, indicating that the trapped K17G2 gene is essential for embryogenesis (data not shown).

Clone GC11E10 was isolated using the GT1.8geo vector and represents a novel ORF. The GC11E10-geo fusion protein was expressed at medium to high levels in undifferentiated ES cells (Fig 3A). In attached EBs, expression appeared within blood



**Fig 2.** K17G2-*lacZ* expression in vitro and in vivo. Overnight X-gal staining showed fusion transcript expression at medium intensity in most undifferentiated K17G2 ES cells (A). The fusion transcript was expressed in the blood island (bi) and some of the associated vascular endothelium (arrows) in attached EB culture (B). Differentiation of clone K17G2 on OP9 stromal cells demonstrated *lacZ* expression in mesodermal (M) colonies (C) and hematopoietic clusters (arrow; D). X-gal staining of an e10.5 F<sub>1</sub> embryo demonstrated limited *lacZ* expression in the embryo (whole mount; E). An X-gal stained e12.5 F<sub>1</sub> embryo demonstrated *lacZ* expression in the pericardium (F) and vascular endothelium and circulating hematopoietic cells (G). In addition, the myocardium (H) and the dorsal root ganglia (I) also express the *lacZ* fusion protein.



**Fig 3.** GC11E10-*lacZ* expression. Overnight X-gal staining showed fusion transcript expression at medium to high levels in most undifferentiated ES cells (A). In attached EB cultures, *lacZ* was expressed within blood islands (bi) and the associated vascular endothelium (arrows; B). Differentiation of clone GC11E10 on OP9 stromal cells demonstrated *lacZ* expression in mesodermal (M) colonies (C) and a proportion of hematopoietic clusters long arrow as well as all large hematopoietic cells (short arrows; D). Overnight whole mount X-gal staining of an e9.5 chimeric embryo and yolk sac demonstrated *lacZ* expression in the dorsal aorta, heart, liver, and vasculature (E). *LacZ* expression in the yolk sac was confined to endothelial and hematopoietic cells (F and G). *LacZ* was expressed by the endocardium and circulating blood cells in the heart (H) and by the intersomitic endothelial cells (arrow; I).

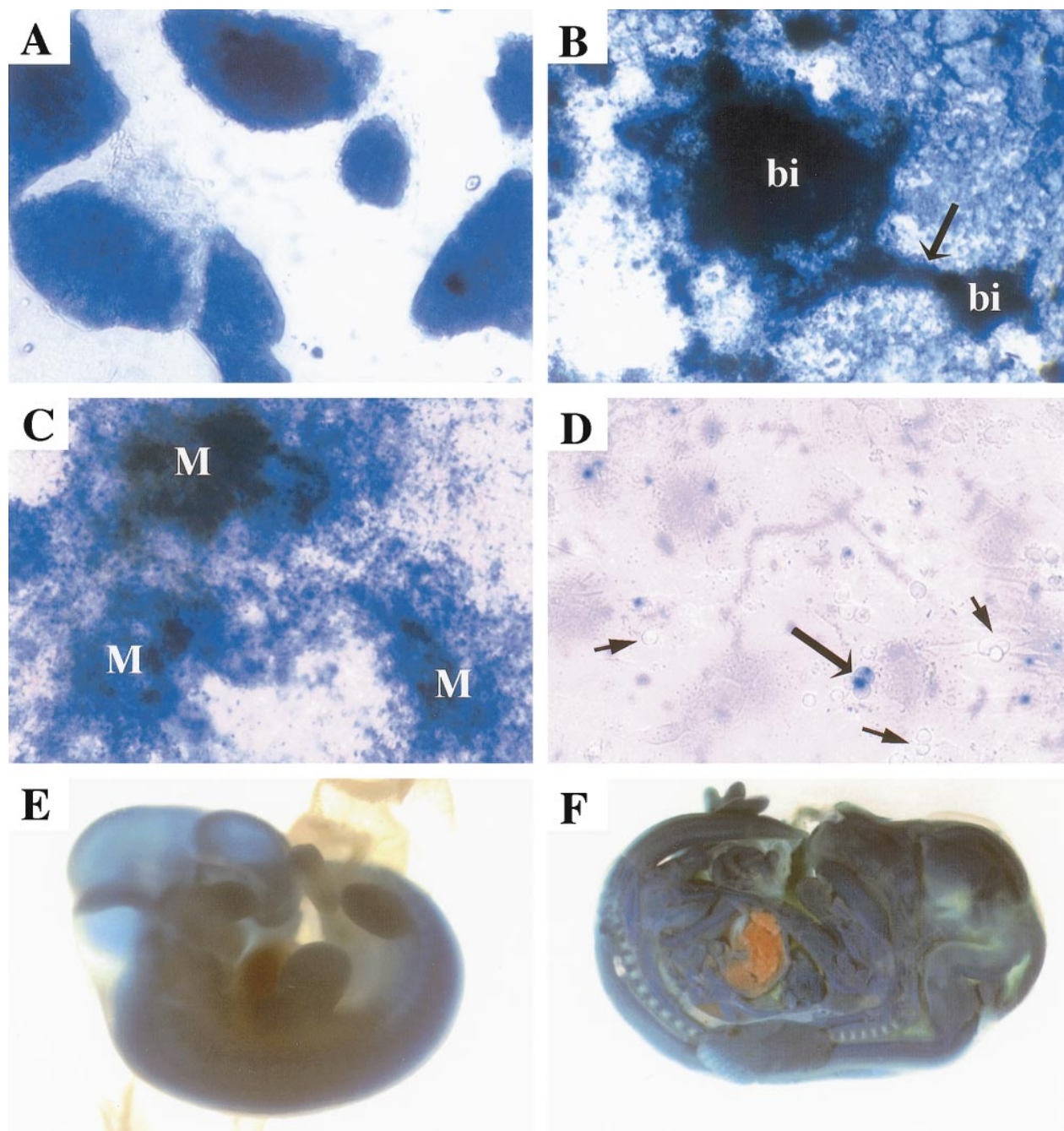
islands (bi) and the vasculature (arrow) associated with these structures (Fig 3B). Differentiation of GC11E10 ES cells on OP9 stromal cells demonstrated *lacZ* expression within mesodermal (M) colonies (Fig 3C) and high levels of expression within hematopoietic cell clusters (long arrow) and large hematopoietic cells that may be megakaryocytes (short arrows; Fig 3D). In vivo, *lacZ* was expressed in the yolk sac, dorsal aorta, heart, the developing liver, and vasculature (Fig 3E and F). Further analysis demonstrated *lacZ* expression within blood cells circulating throughout the embryo and blood islands in the yolk sac (Fig 3G and H). The GC11E10-geo fusion protein was also expressed in endothelial cells throughout the embryo, including the intersomitic vessels (arrow) shown in Fig 3I.

As discussed above, clone K18E2 (a PT1 clone) represents an integration into the first intron of *Mena*. *Mena* has been implicated in actin assembly and cell motility; thus, although its embryonic expression has not been previously described, its

ubiquitous expression in rapidly dividing cells was expected. *Mena-lacZ* was expressed at very high levels in nearly all undifferentiated ES cells (Fig 4A) and virtually all cells in attached EBs including the blood island (bi) shown in Fig 4B. Differentiation of K18E2 on OP9 stromal cells demonstrated high levels of *Mena-lacZ* expression in mesodermal cells (Fig 4C), but only low level expression in a minority of hematopoietic cells (long arrow; Fig 4D). This pattern and level of *lacZ* expression was reproduced in F<sub>1</sub> embryos. *Mena-lacZ* was expressed by almost all cells in the developing embryo with the exception of hepatocytes and some hematopoietic cells (Fig 4E and F and data not shown).

#### DISCUSSION

We have developed an expression-based strategy to identify and mutate genes that are preferentially expressed in cells of the hematopoietic and vascular lineages. Gene trap vectors were



**Fig 4.** Mena-lacZ (K18E2) expression. Overnight X-gal staining demonstrated high-level *lacZ* expression in undifferentiated ES cells (A) and in virtually all cells in the attached EB culture, including blood islands (bi) and their associated vasculature (arrow; B). Differentiation of clone K18E2 on OP9 stromal cells followed by overnight X-gal staining demonstrated high-level *lacZ* expression in mesodermal (M) colonies (C), whereas most hematopoietic cells did not express *lacZ* (short arrows), although low-level expression was observed in some isolated hematopoietic cells (long arrows; D). Mena-lacZ was expressed at high levels in vivo, as demonstrated by strong X-gal staining in less than 90 minutes in an e10.5 F<sub>1</sub> embryo (E). Overnight X-gal staining of an e13.5 F<sub>1</sub> embryo showed strong *lacZ* expression in all tissues except the liver (F).

introduced into ES cells by electroporation and sibling clones were allowed to differentiate into attached EBs to identify expression patterns. Clones exhibiting reporter gene expression in blood islands were then differentiated on OP9 stromal cells to determine if hematopoietic cells expressed the reporter gene. From almost 1,300 clones, we isolated 79 clones with identi-

able expression patterns, of which 33 were preferentially expressed in hematopoietic and/or endothelial cells. These in vitro patterns of expression, which can be analyzed relatively quickly and in large numbers, were reliable predictors of in vivo patterns of expression as subsequently determined in chimeric and F<sub>1</sub> embryos. ES clones with expression patterns of interest

were then used to clone and sequence the upstream coding region of the trapped gene by 5' RACE. Three of the clones corresponded to known genes and eight were novel. The three known genes, *Mena*, *Karyopherin  $\beta$ 3*, and *5' GMP synthetase*, have diverse biological and biochemical functions, yet little is known about their developmental expression or the consequences of mutations in these genes on mammalian development or function in the adult. We are currently introducing these mutations into the mouse germline to determine their biological function in vivo. Detailed in vivo analysis of mutant phenotypes, combined with sequence analysis and expression pattern, should provide valuable insight into the biological functions of these genes.

In vivo analysis of several of the novel hematopoietic and vascular genes has demonstrated tissue-specific expression of these genes. *GC11E10* expression is confined to hematopoietic and endothelial lineages (Fig 3 and data not shown). The GC11E10 mutation has been transmitted through the germline. Brother-sister matings of heterozygous littermates are currently being performed to analyze gene function. *K17G2* is expressed exclusively in the hematopoietic, vascular, heart, and sensory nervous systems in the embryo. In the adult, *17G2* expression is dramatically upregulated in the vascular system and is expressed at low levels by most hematopoietic cells and is expressed at high levels by approximately 1% of bone marrow cells (data not shown). Preliminary analysis of *K17G2* homozygous embryos has determined that a significant percentage of the homozygous embryos are edematous and develop hemorrhages. More thorough investigation of expression and homozygous phenotype is required to assess the function of *K17G2*.

Gene trapping in ES cells is a powerful technique because it simultaneously integrates gene identification and structure, expression, and functional analysis into one process. Previously published gene trap screens have used one of these three types of analysis as the primary determinant to select clones for further study. The first group of screens used no preselection to study mutant phenotypes. Collectively, these studies have determined that nearly 40% of gene trap mutants result in recessive embryonic lethality.<sup>12,32-34</sup> Several sequence-based screening strategies have been developed to either rapidly isolate 5'RACE sequences,<sup>35-37</sup> isolate 3'RACE sequences,<sup>38,39</sup> or clone proviral integration sites by plasmid rescue.<sup>40</sup> In addition, Skarnes et al<sup>11</sup> modified the GT1.8geo vector to trap specifically genes that encode secreted or transmembrane proteins. Several groups, including ourselves, have performed screens based on regulated expression. Each of these screens analyzed clones that contained integrations into genes that were transcriptionally active in ES cells. The expression of the fusion transcripts was either analyzed by in vivo expression<sup>30</sup> or regulation by exogenous factors<sup>15,41,42</sup> or by in vitro differentiation.<sup>43-45</sup> The previous in vitro prescreening strategies identified clones with regulated expression in cardiomyocyte, neuronal, and chondrocyte lineages.

Thus, the expression trapping approach described here complements and extends the previous expression-based gene trap screens by specifically identifying integrations into genes preferentially expressed in hematopoietic and endothelial lineages. In addition, we have designed the screen to perform large-scale, genome-wide scans for genes of interest. All

integrations with identifiable expression patterns in vitro were catalogued to generate a biological resource of gene-trap insertions based on expression pattern, cDNA sequence, and mutant phenotypes.

The attached EB differentiation assay used here as the primary screen enabled us to identify a large number of genes with a spatially or cell-type restricted expression in several cell lineages, including hematopoietic, endothelial, stromal, and myocyte. Many cell types develop in these cultures; thus, a screen based on in vitro expression patterns would be feasible provided the patterns accurately reflect the pattern of gene expression within the context of a developing embryo or adult. Therefore, an important result from the studies reported here was the observation that the patterns of expression observed in vitro accurately paralleled the expression of the gene in vivo. Clones that exhibited *lacZ* expression patterns in unknown cell types are currently being tested in vivo to determine the cell lineages in which they are expressed. This information should widen the range of cell types and corresponding lineage-restricted genes that can be trapped by this strategy.

We were particularly interested in comparing the expression trapping parameters of the PT1 vector, in which the *neo* gene is under the control of an autonomous promoter and GT1.8geo, which will only give rise to a G418-resistant colony if the vector has integrated into an actively expressed gene. A priori, each vector has its own advantages and disadvantages. PT1 can trap genes that are not expressed in undifferentiated ES cells but that may only be activated in differentiated derivatives. On the other hand, the PT1 vector will also give rise to G418-resistant colonies after integration within intergenic regions. These integration events would be expected to lower the numbers of trapped genes per ES clones. In contrast, GT1.8geo will only give rise to G418-resistant colonies after integration within a gene, providing that the gene is already expressed in undifferentiated ES cells. Interestingly, one third of the blue PT1 clones but only one eighth of the blue GT1.8geo clones exhibited identifiable expression patterns (Table 1). Thus, although integration of the PT1 vector in both intragenic and intergenic regions can result in G418-resistant ES clones, a higher percentage of  $\beta$ -gal-positive PT1 clones have identifiable expression patterns. Therefore, provided that the screening method is efficient, the PT1 vector, or similar vectors, can be used to trap genes not expressed in ES cells. In addition, because the *neo*<sup>R</sup> gene is driven by the *PGK-1* promoter, it should be possible to use high G418 selection<sup>46</sup> to produce homozygous ES cells for each gene trap line at a high throughput. Because of differing levels of *neo*<sup>R</sup> activity in GT1.8geo cell lines, high G418 selection would be more difficult and labor-intensive. The homozygous ES cell lines could be used to perform chimeric analysis as well as a functional in vitro gene trap screen to assay mutations affecting development of hematopoietic, endothelial, or myoblast lineages. We are currently pursuing these strategies.

Finally, it should be possible to increase the efficiency and versatility of the screen by incorporating multiplex assays to identify various gene families. Related strategies based on the ability of ES cells to differentiate and respond to exogenous factors in vitro will also make it possible to identify genes that are differentially regulated in many distinct cell lineages in



vivo. When combined with the potential of ES cells to give rise to germ cells, this approach simultaneously should provide expression, sequence, and phenotypic information on a very wide spectrum of genes. Thus, expression trapping in ES cells provides a useful complement to other strategies designed to analyze at a functional level the very large number of proteins encoded by the mammalian genome.

#### ACKNOWLEDGMENT

The authors thank Caryn Ito and Janet Rossant for critical reading of the manuscript; Bill Skarnes for the GT1.8geo vector; Ken Harpel for the preparation of histological sections; Sandra Tondat, Marina Gertsenstein, Lois Schwartz, and Sarang Kulkarni for transgenic work; and Michelle Tam for technical assistance.

#### REFERENCES

- Bernstein A, Forrester L, Reith AD, Dubreuil P, Rottapel R: The murine W/c-kit and Steel loci and the control of hematopoiesis. *Semin Hematol* 28:138, 1991
- Bedell MA, Jenkins NA, Copeland NG: Mouse models of human disease. Part I: Techniques and resources for genetic analysis of mice. *Genes Dev* 11:1, 1997
- Bedell MA, Largaespada DA, Jenkins NA, Copeland NG: Mouse models of human disease. Part II: Recent progress and future directions. *Genes Dev* 11:11, 1997
- Doetschman T, Gregg RG, Maeda N, Hooper ML, Melton DW, Thompson S, Smithes O: Targetted correction of a mutant HPRT gene in mouse embryonic stem cells. *Nature* 330:576, 1987
- Thomas KR, Capecchi MR: Site-directed mutagenesis by gene targeting in mouse embryo-derived stem cells. *Cell* 51:503, 1987
- Gossler A, Joyner AL, Rossant J, Skarnes WC: Mouse embryonic stem cells and reporter constructs to detect developmentally regulated genes. *Science* 244:463, 1989
- Doetschman TC, Eistetter H, Katz M, Schmidt W, Kemler R: The *in vitro* development of blastocyst-derived embryonic stem cell lines: Formation of visceral yolk sac, blood islands and myocardium. *J Embryol Exp Morph* 87:27, 1985
- Wang R, Clark R, Bautch VL: Embryonic stem cell-derived cystic embryoid bodies form vascular channels: An *in vitro* model of blood vessel development. *Development* 114:303, 1992
- Nakano T, Kodama H, Honjo T: Generation of lymphohematopoietic cells from embryonic stem cells in culture. *Science* 265:1098, 1994
- Hill DP, Wurst W: Screening for novel pattern formation genes using gene trap approaches. *Methods Enzymol* 225:664, 1993
- Skarnes WC, Moss JE, Hurlley SM, Beddington RSP: Capturing genes encoding membrane and secreted proteins important for mouse development. *Proc Natl Acad Sci USA* 92:6592, 1995
- Friedrich G, Soriano P: Promoter traps in embryonic stem cells: A genetic screen to identify and mutate developmental genes in mice. *Genes Dev* 5:1513, 1991
- Nagy A, Rossant J, Nagy R, Abramow-Newerly W, Roder JC: Derivation of completely cell culture-derived mice from early passage embryonic stem cells. *Proc Natl Acad Sci USA* 90:8424, 1993
- Bautch VL, Stanford WL, Rapoport R, Russell S, Byrum RS, Futch TA: Blood island formation in attached cultures of murine embryonic stem cells. *Dev Dyn* 205:1, 1996
- Sam M, Wurst W, Kluppel M, Jin O, Heng H, Bernstein A: Gene trap characterization of *Aquarius*, a novel gene with RNA-dependent RNA polymerase motif. *Dev Dyn* 212:304, 1998
- Nagy A, Rossant J: Production of completely ES cell derived fetuses, in Joyner AL (ed): *Gene Targeting: A Practical Approach*. Oxford, UK, IRL, 1993, p 147
- Schmitt RM, Bruyns E, Snodgrass HR: Hematopoietic development of embryonic stem cells *in vitro*: Cytokine and receptor gene expression. *Genes Dev* 5:728, 1991
- Keller G, Kennedy M, Papayannopoulou T, Wiles MV: Hematopoietic commitment during embryonic stem cell differentiation in culture. *Mol Cell Biol* 13:473, 1993
- Snodgrass HR, Graham DK, Stanford WL, Licato LL: Embryonic stem cells: research and clinical potentials, in Smith D, Sacher RA, Jefferies LC (eds): *Peripheral Blood Stem Cells*. Bethesda, MD, American Association of Blood Banks, 1993, p 65
- Weiss MJ, Keller G, Orkin SH: Novel insights into erythroid development revealed through *in vitro* differentiation of GATA-1<sup>-</sup> embryonic stem cells. *Genes Dev* 8:1184, 1994
- Shalaby F, Ho J, Stanford WL, Fisher K-D, Schuh AC, Schwartz L, Bernstein A, Rossant J: A requirement for Flk-1 in primitive and definitive hematopoiesis, and vasculogenesis. *Cell* 89:981, 1997
- Narita N, Bielinska M, Wilson DB: Cardiomyocyte differentiation by GATA-4-deficient embryonic stem cells. *Development* 122:3755, 1996
- Nakano T, Kodama H, Honjo T: *In vitro* development of primitive and definitive erythrocytes from different precursors. *Science* 272:722, 1996
- Frohman MA, Dush MK, Martin GR: Rapid production of full-length cDNAs from rare transcripts: Amplification using a single-gene specific oligonucleotide primer. *Proc Natl Acad Sci USA* 85:8998, 1988
- Gertler FB, Comer AR, Juang JL, Ahern SM, Clark MJ, Liebl EC, Hoffman FM: Enabled, a dosage-sensitive suppressor of mutations in the Drosophila Abl tyrosine kinase, encodes an Abl substrate with SH3 domain-binding properties. *Genes Dev* 9:521, 1995
- Gertler FB, Niebuhr K, Reinhard M, Wehland J, Soriano P: Mena, a relative of VASP and Drosophila enabled, is implicated in the control of microfilament dynamics. *Cell* 87:227, 1996
- Yaseen NR, Blobel G: Cloning and characterization of human karyopherin  $\beta$ 3. *Proc Natl Acad Sci USA* 94:4451, 1997
- Kutay U, Izaurralde E, Bischoff FR, Mattaj JW, Gorlich D: Dominant-negative mutants of importin- $\beta$  block multiple pathways of import and export through the nuclear pore complex. *EMBO J* 16:1153, 1997
- Seedorf M, Silver PA: Importin/karyopherin protein family members required for mRNA export from the nucleus. *Proc Natl Acad Sci USA* 94:8590, 1997
- Wurst W, Rossant J, Prideaux V, Kownacka M, Joyner AL, Hill DP, Guillemot F, Gasca S, Cado D, Auerbach A, Ang S-L: A large-scale gene-trap screen for insertional mutations in developmentally regulated genes in mice. *Genetics* 139:889, 1995
- Torres M, Stoykova A, Huber O, Chowdery K, Bonaldo P, Mansouri A, Butz S, Kemler R, Gruss P: An alpha-E-catenin gene trap mutation defines its function in preimplantation development. *Proc Natl Acad Sci USA* 94:901, 1997
- Skarnes WC, Auerbach BA, Joyner AL: A gene trap approach in mouse embryonic stem cells: The lacZ reporter is activated by splicing, reflects endogenous gene expression, and is mutagenic in mice. *Genes Dev* 6:903, 1992
- von Melchner H, DeGregori JV, Rayburn H, Reddy S, Friedel C, Ruley HE: Selective disruption of genes expressed in totipotent embryonic stem cells. *Genes Dev* 6:919, 1992
- DeGregori J, Russ A, von Melchner H, Rayburn H, Priyaranjan P, Jenkins NA, Copeland NG, Ruley HE: A murine homolog of the yeast RNA1 gene is required for postimplantation development. *Genes Dev* 8:265, 1994
- Holzschu D, Lapierre L, Neubaum D, Mark WH: A molecular strategy designed for the rapid screening of gene traps based on

sequence identity and gene expression pattern in adult mice. *Transgenic Res* 6:97, 1997

36. Chowdhury K, Bonaldo P, Torres M, Stoykova A, Gruss P: Evidence for the stochastic integration of gene trap vectors into the mouse germline. *Nucleic Acids Res* 25:1531, 1997

37. Townley DJ, Avery BJ, Rosen B, Skarnes WC: Rapid sequence analysis of gene trap integrations to generate a resource of insertional mutations in mice. *Genome Res* 7:293, 1997

38. Yoshida M, Yagi T, Furuta Y, Takayanagi K, Kominami R, Takeda N, Tokunaga T, Chiba J, Ikawa Y, Aizawa S: A new strategy of gene trapping in ES cells using 3'RACE. *Trans Res* 4:277, 1995

39. Zambrowicz BP, Freidrich GA, Buxton EC, Lilleberg SL, Person C, Sands AT: Disruption and sequence identification of 2,000 genes in mouse embryonic stem cells. *Nature* 392:608, 1998

40. Hicks GG, Shi EG, Li XM, Li CH, Pawlak M, Ruley HE: Functional genomics in mice by tagged sequence mutagenesis. *Nat Genet* 16:338, 1997

41. Forrester L, Nagy A, Sam M, Watt A, Stevenson L, Bernstein A, Joyner AL, Wurst W: Induction gene trapping in ES cells: Identification

of developmentally regulated genes that respond to retinoic acid. *Proc Natl Acad Sci USA* 93:1677, 1996

42. Sam M, Wurst W, Forrester L, Vauti F, Heng H, Bernstein A: A novel family of repeat sequences in the mouse genome responsive to retinoic acid. *Mamm Genome* 7:741, 1996

43. Scherer CA, Chen J, Nachabeh A, Hopkins N, Ruley HE: Transcriptional Specificity of the pluripotent embryonic stem cell. *Cell Growth Diff* 7:1393, 1996

44. Shirai M, Miyashita A, Ishii N, Itoh Y, Satokata I, Watanabe YG, Kuwano R: A gene trap strategy for identifying the gene expressed in the embryonic nervous system. *Zool Sci* 13:277, 1996

45. Baker RK, Haendel MA, Swanson BJ, Shambaugh JC, Micales BK, Lyons GE: In vitro preselection of gene-trapped embryonic stem cell clones for characterizing novel developmentally regulated genes in the mouse. *Dev Biol* 185:201, 1997

46. Mortensen RM, Conner DA, Chao S, Geister-Lowrance AA, Seidman JG: Production of homozygous mutant ES cells with a single targeting construct. *Mol Cell Biol* 12:2391, 1992