

# Lymphomas in Patients With Sjögren's Syndrome Are Marginal Zone B-Cell Neoplasms, Arise in Diverse Extranodal and Nodal Sites, and Are Not Associated With Viruses

By Bruno Royer, Dominique Cazals-Hatem, Jean Sibilia, Felix Agbalika, Jean-Michel Cayuela, Thierry Soussi, Frédéric Maloïsel, Jean-Pierre Clauvel, Jean-Claude Brouet, and Xavier Mariette

The occurrence of non-Hodgkin's lymphoma (NHL) is the most serious complication of Sjögren's syndrome (SS). We performed a study of 16 NHLs occurring in patients with an underlying SS. These lymphomas arose not only in salivary glands (7 cases) but also in other mucosal extranodal sites (the stomach [4 cases], the lung [3 cases], the skin [3 cases], the buccal mucosa [1 case], the thymus [1 case]) and in nodal sites (8 cases). Low-grade marginal zone lymphomas (MZL) were diagnosed in 12 of the 16 patients, 9 of mucosa-associated lymphoid tissues (MALT) type in mucosal sites and 3 exclusively nodal. The 4 other patients presented with a high-grade B-cell lymphoma that was probably a histological transformation of an underlying low-grade MZL at least in 3 of the cases involving skin, stomach, and parotid, respectively. A t(14;18) translocation was detected in 1 of 8 lymphomas tested. We detected serum anti-p53 antibodies

in 2 of the 14 studied patients. p53 protein was detected in 1 of 11 lymphomas tested. LMP protein and Eber RNAs of Epstein-Barr virus (EBV) were not detected in the 16 NHL biopsies. Using polymerase chain reaction, EBV was never detected except in 1 of 4 parotid lymphomas. No human T-lymphotropic virus 1 or human herpes virus 8 DNAs were detected in NHL biopsies. None of the patients had hepatitis C virus infection found using serological methods. Chemotherapy was usually efficient. In conclusion, lymphomas occurring in patients with an underlying SS are in most cases MZL. These lymphomas are not associated with viruses known to be present in other types of lymphomas. Some of the translocations or mutations of oncogenes or antioncogenes described in other lymphomas are detected in SS-associated lymphomas.

© 1997 by The American Society of Hematology.

**S**JÖGREN'S SYNDROME (SS) is an autoimmune disease characterized by a lymphocytic infiltration of salivary and lacrimal glands leading to a progressive destruction of these glands and by production of autoantibodies.<sup>1</sup> This disorder is either isolated (primary SS) or associated with other systemic diseases (secondary SS). The occurrence of B-cell non-Hodgkin's lymphoma (NHL) represents the major complication in the evolution of SS patients.<sup>2</sup> The risk of developing NHL, which is equivalent for both primary and secondary SS, was estimated to be 44 times greater than that observed in a comparable normal population.<sup>3</sup> NHLs in SS patients occur preferentially in salivary glands and in other mucosa-associated lymphoid tissues (MALT) but also in lymph nodes and bone marrow. The evolution from benign lymphocytic infiltration characteristic of SS to malignant NHL is probably a multistep process, the underlying molecular events of which are still unknown.<sup>4,5</sup>

We present here the clinical, biological, histological, and phenotypical characteristics of 16 NHLs occurring in patients with an underlying SS. Because viruses are believed

to play a role in the natural history of SS either as a triggering event or as a complication,<sup>6</sup> we looked for an association between these NHLs and viruses such as Epstein-Barr virus (EBV), human herpes virus 8 (HHV8), hepatitis C virus (HCV), or human T-cell lymphocytotropic virus 1 (HTLV-1). In addition, we investigated whether translocations or mutations of oncogenes or antioncogenes such as bcl-2 or p53 may represent one step of the malignant transformation in these patients.

## PATIENTS AND METHODS

*Patients.* Sixteen consecutive patients with NHL complicating SS were studied in two French hospitals (Hôpital Saint-Louis [Paris, France] and Hôpital de Hautepierre [Strasbourg, France]). All patients had a diagnosis of SS according to the criteria of Fox et al.<sup>7</sup>

*Histology and immunohistochemistry.* Tissue was fixed in 10% formalin or in Bouin's fixative. After being embedded in paraffin, the sections were stained with hematoxylin and eosin and Giemsa. No frozen material was available. The lymphomas were classified according to the Kiel classification<sup>8</sup> and according to the newly proposed REAL classification from the International Lymphoma Study Group.<sup>9</sup> Immunohistochemistry was performed on a representative section to determine the phenotype of malignant cells and the isotype of the lymphoid infiltrate when a plasmacytoid differentiation was present and to study the expression of the bcl-2 protein and of the EBV latent membrane protein (LMP). We used antibodies to CD20 (L26), CD3,  $\kappa$ , and  $\lambda$  Ig light chains, bcl-2 and LMP (Dako SA, Glostrup, Denmark) according to a three-step immunoperoxidase method.<sup>10</sup>

p53 expression was tested on fixed sections with the monoclonal antibody DO7 (from T. Soussi, Institut Curie, Paris, France) using a microwave-based procedure as already described<sup>11</sup> in 11 cases. The sections were cut immediately before testing; indeed, it has been recently shown that a marked decrease of p53 immunostaining occurs over time if sections on glass slides were stored more than 3 months before testing.<sup>12</sup> Appropriate positive and negative controls were also tested.

*Detection of EBV Eber RNAs by in situ hybridization.* The presence of the EBV genome was detected using the fluorescein-conjugated EBV oligonucleotides Eber 1 and 2 (Dako SA), complementary to the nuclear RNAs portions of the Eber genes, actively

From the Service d'Immuno-Hématologie, Laboratoire d'Anatomopathologie, Service de Bactério-Virologie, INSERM U 93-Immunogénétique de la transplantation, U301 INSERM-Génétique cellulaire et moléculaire des leucémies-IGM-Hôpital Saint-Louis, Paris, France; and the Service de Rhumatologie and the Service d'Hématologie, Hôpital de Hautepierre, Strasbourg, France.

Submitted October 8, 1996; accepted March 7, 1997.

Supported by a grant from the Délégation de la Recherche Clinique (Assistance Publique-Hôpitaux de Paris).

Address reprint requests to Xavier Mariette, MD, Service d'Immuno-Hématologie-Hôpital Saint-Louis, 1, avenue Claude Vellefaux, 75475 Paris cédex 10, France.

The publication costs of this article were defrayed in part by page charge payment. This article must therefore be hereby marked "advertisement" in accordance with 18 U.S.C. section 1734 solely to indicate this fact.

© 1997 by The American Society of Hematology.

0006-4971/97/9002-0032\$3.00/0

transcribed in latently infected cells. Deparaffinized sections were rehydrated and pretreated with proteinase K, dehydrated, air-dried, and hybridized for 2 hours at 37°C with the fluorescein isothiocyanate (FITC)-conjugated Eber probes in hybridization solution (0.1% Triton X-100). After washing in TBS, pH 7.6, containing 0.1% Triton X-100, the following immunohistochemical detection system was used: mouse anti-FITC, rabbit antimouse Ig, and APAAP complexes (Dako SA). Appropriate controls were studied in parallel.

**Detection of EBV DNA by polymerase chain reaction (PCR).** Genomic DNA was extracted from paraffin-embedded LNH sections from biopsy samples of each patient as described elsewhere<sup>13</sup> and was subjected to PCR amplification using uracil-N-glucosylase (UNG).<sup>14</sup> PCR was performed with oligonucleotide primers localized in the BamHI-W fragment of the virus at positions 967-992 and 1121-1096, as described elsewhere.<sup>15</sup> After transfer, amplification products were detected with a specific oligosynthetic probe localized at position 1055-1085, labeled with the digoxigenin (DIG)-oligonucleotide tailing kit (Boehringer Mannheim, Mannheim, Germany).<sup>15</sup> Positive and negative controls were performed with DNA extracts from EBV-infected and -uninfected tissue samples.

**Detection of the pX gene of HTLV-1 by PCR.** Genomic DNA extracted from paraffin-embedded LNH sections from biopsy samples of each patient was subjected to PCR amplification using UNG.<sup>14</sup> The primer pair SK 43/44 used by Kwok et al<sup>16</sup> amplified the tax region of the HTLV-I genome. The amplified products were tested under conditions described elsewhere.<sup>17</sup> Positive and negative controls included an HTLV-1-positive cell line (SLB1) and lymphoid blood cells of a normal donor, respectively.

**Detection of HHV8 by PCR.** Amplification conditions used HHV8 primers, as described elsewhere.<sup>18</sup> After transfer, amplification products were detected with a 25-bp internal oligomer probe<sup>18</sup> end-labeled with the DIG-oligonucleotide tailing kit (Boehringer Mannheim). Positive and negative controls were performed with DNA extracts from patients with and without Kaposi's sarcoma. The absence of PCR inhibitors in DNA samples was checked by amplification in the same conditions of HHV8 DNA from a mix of the DNA sample tested and DNA extracts from BC-1 cells obtained from American Type Culture Collection (Rockville, MD).<sup>19</sup>

**Detection of bcl-2 rearrangement by PCR.** PCR amplification at the major breakpoint region (Mbr) of the bcl-2/IgH translocation was performed using primers for the Mbr and for the JH consensus region as described elsewhere.<sup>20</sup> After transfer, PCR products were hybridized with an internal radiolabeled oligonucleotide probe described by Crescenzi et al.<sup>21</sup> Sensitivity of the assay assessed by amplification of 10-fold serial dilutions of DNA from t(14;18)-carrying tumor cells in DNA from peripheral blood mononuclear cells was approximately 1 tumor cell in 10<sup>5</sup> normal cells. The quality of DNA samples was checked by amplification of  $\beta$ -actin genes.

**Detection of anti-p53 antibodies by enzyme-linked immunosorbent assay (ELISA).** Circulating anti-p53 antibodies were detected using an ELISA as previously described.<sup>22</sup> Previous studies have shown that anti-p53 antibodies are specifically found in patients with various types of neoplasia and are not present in the normal population.<sup>22</sup>

## RESULTS

**Patients' characteristics.** Clinical characteristics of the 16 patients are shown in Table 1. The mean age was 57 years (range, 18 to 80 years). They were 11 women and 5 men. SS was primary in 15 cases and secondary to rheumatoid arthritis in 1 case. All patients were diagnosed with SS according to the criteria of Fox et al.<sup>7</sup> In 14 patients, the diagnosis of SS was established 2 to 25 years before the diagnosis of NHL. In 2 patients, SS and NHL were diagnosed simultaneously. Although a lymphoid infiltration of salivary

glands may occur in NHL,<sup>23</sup> these 2 patients were considered to have an underlying SS because sicca symptoms were present for more than 2 years before NHL. Furthermore, 1 patient's serum contained anti-SS-A antibodies and labial salivary gland biopsies did not disclose any monotypic B-cell (data not shown). For the 16 patients, the mean duration between the diagnosis of SS and NHL was 11 years (range, 0 to 25 years).

Four patients received an immunosuppressive therapy before the onset of lymphoma: prednisone for more than 1 year (cases no. 3, 6, and 13), azathioprine for 1 year (case no. 3), or low-dose methotrexate for 3 years (case no. 7). Another patient (case no. 2) received radiotherapy on the parotid 5 years before the onset of gastric lymphoma.

Extranodal mucosal localization of the lymphoma was observed in 13 of the 16 cases. The lymphoma was exclusively nodal in only 3 cases; of note, 5 of the 13 patients with extranodal lymphomas also had a nodal involvement. The mucosal localizations were the parotid (7 cases), the lung (3 cases), the stomach (4 cases), the skin (3 cases), the buccal mucosa (1 case), and the thymus (1 case).

**Treatment and outcome.** All patients were treated with chemotherapy (Table 1), sometimes in conjunction with surgery (cases no. 4, 6, and 8) or radiotherapy (case no. 11). Complete remission (CR) was obtained in 12 patients. Eleven of these 12 patients are still alive in CR with a follow-up from 0.5 to 12 years and 1 died suddenly in CR 5 months after the end of the chemotherapy. A partial remission (PR) was obtained in 3 patients; it was stable in 2 of them (18 months and 3 years after the end of the treatment), while the third patient experienced a relapse after 2 years. The last patient, who presented with a gastric MALT lymphoma, was apparently cured with antibiotics administered for *Helicobacter pylori* infection and died from an aggressive cutaneous and nodal T-cell lymphoma that was refractory to chemotherapy.

**Serological data.** Autoantibodies associated with SS were detectable in the majority of patients' sera (Table 1): rheumatoid factor (9 of 15), antinuclear antibodies (12 of 15), and anti-SS-A and/or anti-SS-B antibodies (11 of 15). Serum from three patients featured a decrease in the level of the 3 main classes of Igs when the diagnosis of NHL was made. A monoclonal IgM  $\kappa$  was detected in the serum of 3 patients and was associated with a type II mixed cryoglobulinemia in 2 instances. Antibodies to human immunodeficiency virus, HTLV-1, and HCV were not detected in patients' sera.

**Histology, immunohistochemistry, and in situ hybridization.** Table 2 shows the histological types and the immunohistochemical results of the 16 cases of lymphoma reviewed.

Low-grade marginal zone B-cell lymphoma (MZL; REAL classification)<sup>9</sup> comprised the largest number of cases (n = 12). Nine of them were low-grade MALT type lymphomas involving parotid, stomach, bronchus, buccal mucosa, and skin. The histological pattern was relatively homogeneous, showing diffuse lymphoid infiltrates that included small lymphocytes with round nuclei or with plasma-cell differentiation and/or centrocyte-like cells with indented nuclei (Fig 1A). Lymphoepithelial lesions were observed in each case,

Table 1. Clinical Characteristics of Patients

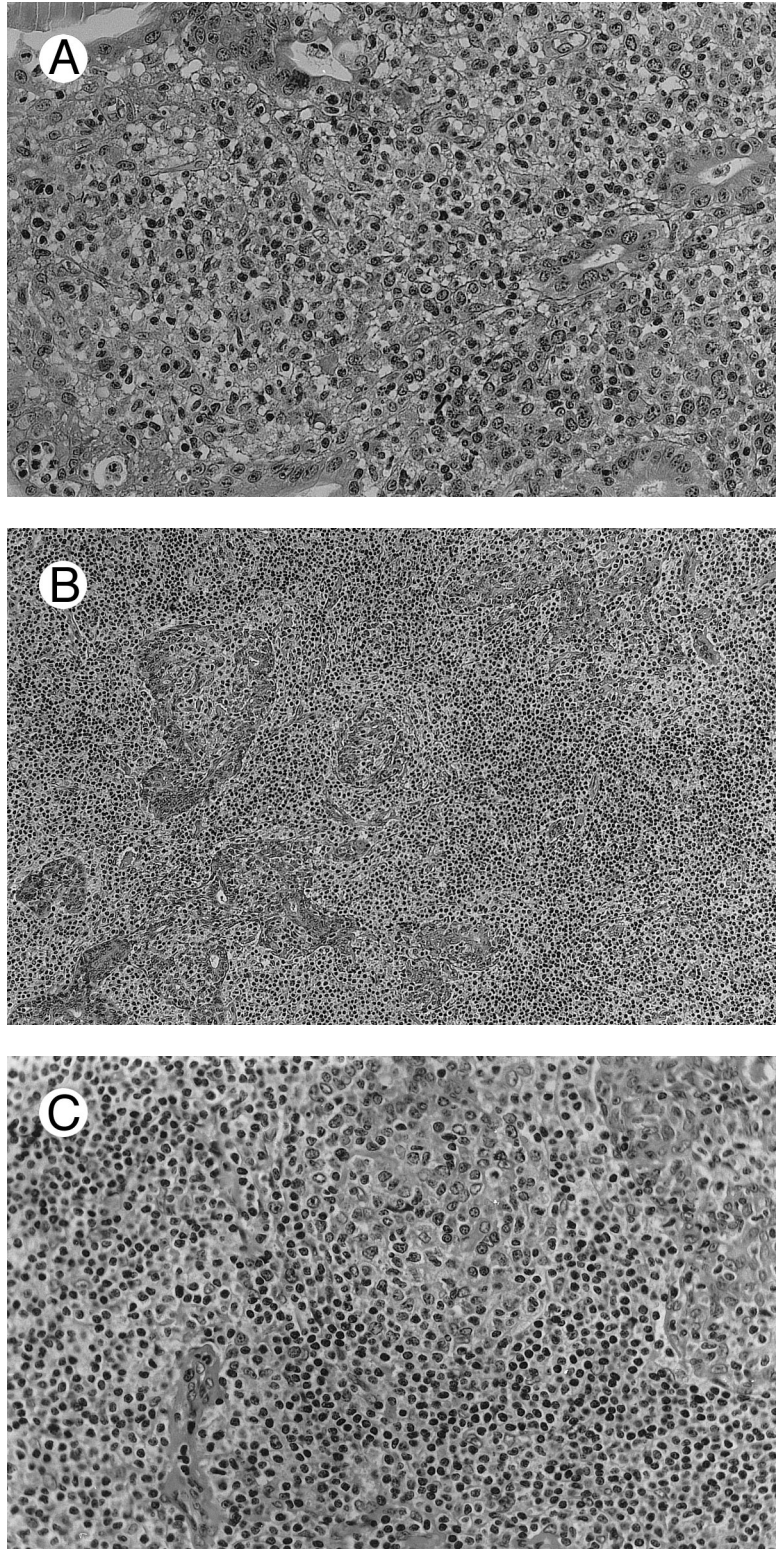
	Age/Sex	Duration SS	Anti-SS-A/SS-B	RF	Cryo	Mono Ig	Hypo Ig	Localization	Treatment	Response (yr)
1	80/F	25	Yes	Yes	Yes	Mk	Yes	Buccal mucosa Lymph node Lung	CLB	CR (2)
2	63/M	12	Yes	No	No	No	No	Stomach	ACVBP MTX	CR (1)
3	57/F	12	Yes	Yes	No	No	No	Parotid Peripheral nerve	CPM	CR (5)
4	18/F	4	Yes	Yes	No	No	No	Parotid Skin	CLB	CR (5)
5	60/M	18	No	No	No	No	Yes	Bronchus Lung Lymph node	CLB CHOP ACVBP	PR (2) Relapse
6	38/F	2	Yes	No	No	No	No	Parotid	MTX	CR (1)
7	71/M	15	Yes	Yes	No	No	Yes	Skin Muscle	CHOP COP	CR (0.5) Dead
8	66/F	0	No	No	No	No	No	Parotid Lymph node	mBACOD	CR (7)
9	64/M	2	Yes	No	No	No	No	Lymph node	ACVBP	CR (8)
10	62/M	10	No	Yes	No	No	No	Lymph node	COP Radiotherapy	CR (9)
11	38/F	10	Yes	Yes	No	Mk	No	Parotid Thymus Stomach	CHOP CPM	PR (3)
12	60/F	4	Yes	Yes	Yes	Mk	No	Lymph node Stomach	CHOP CLB	PR (1.5)
13	73/F	0	No	No	No	No	No	Stomach Skin	CLB/IFN	PR (0.5) Dead
14	56/F	2						Lymph node	COP	CR (12)
15	48/F	11	Yes	Yes	No	No	No	Parotid	CLB	CR (2)
16	71/F	22	Yes	Yes	No	No	No	Parotid Lung	CHOP	CR (0.5)

Abbreviations: RF, rheumatoid factor; mono Ig, monoclonal Ig; hypo Ig, hypogammaglobulinemia; CR, complete remission; PR, partial remission; CLB, chlorambucil; CPM, cyclophosphamide; MTX, methotrexate; IFN,  $\alpha$  interferon; COP, cyclophosphamide + vincristine + prednisone; CHOP, cyclophosphamide + doxorubicine + vincristine + prednisone; CVB, cyclophosphamide + vindesine + bleomycine; ACVBP, doxorubicine + cyclophosphamide + vindesine + bleomycine + prednisone; MBACOD, methotrexate + bleomycine + doxorubicine + cyclophosphamide + vincristine + dexamethasone.

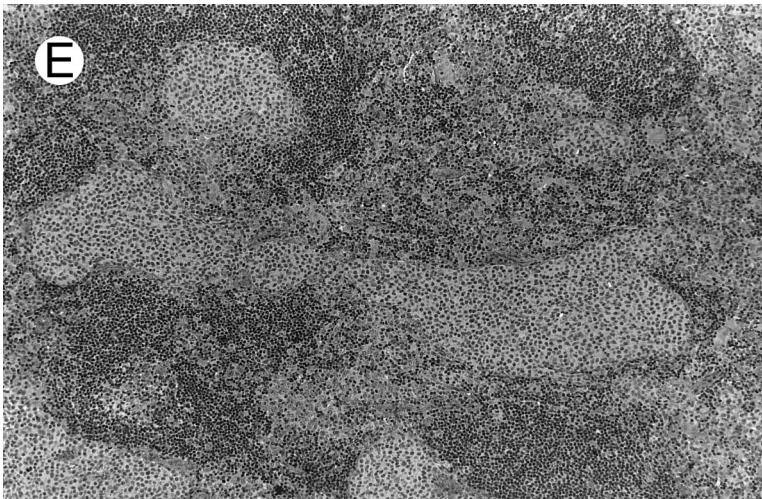
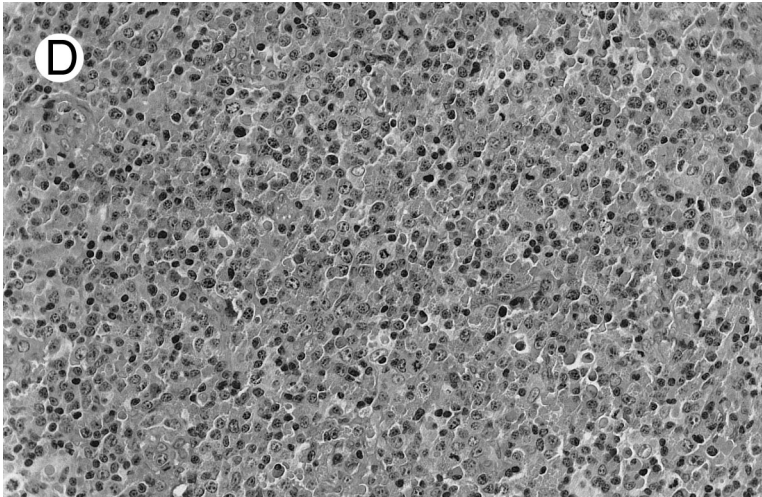
Table 2. Histological, Phenotypical, Virological, and Molecular Data of SS-Associated Lymphomas

	Tissue Specimen	Histological Pattern		VL Exp	LMP Exp	Eber RNA	EBV DNA	HHV8 DNA	HTLV-1 DNA	trans 14,18	bcl-2 Exp	p53 Exp	Anti-p53 Ab
		Kiel	REAL										
1	Buccal Mucosa	—	MALT	$\kappa$	No	No					Yes		No
2	Stomach	Centroblastic	Diffuse large B-cell	$\kappa$	No	No	No	No	No	No	No	No	No
3	Parotid	—	MALT	$\kappa$	No	No	No				Yes	No	No
4	Skin	—	MALT	$\kappa$	No	No		No		No	Yes	No	No
5	Bronchus Lymph node	— Centroblastic	MALT Diffuse large B-cell	Neg	No	No	No	No	No	Yes	Yes	No	No
6	Parotid	—	MALT	Neg	No	No		No	No		Yes	No	No
7	Skin	Centroblastic	Diffuse large B-cell	$\kappa$	No	No	No	No	No		No	No	No
8	Lymph node	Immunocytoma	Marginal zone B-cell	Neg	No	No	No	No	No	No	Yes	Yes	Yes
9	Lymph node	Centroblastic	Diffuse large B-cell		No	No	No		No		Yes		No
10	Lymph node	Immunocytoma	Marginal zone B-cell		No	No	No		No		Yes		
11	Stomach	—	MALT		No	No	No		No		Yes	No	No
12	Stomach	—	MALT	$\kappa$	No	No		No			Yes	No	
13	Stomach Skin	— Pleiomorphic T-cell	MALT Peripheral T-cell	Neg	No	No	No		No	No	Yes		No No
14	Lymph node	Immunocytoma	Marginal zone B-cell	Neg	No	No					Yes		Yes
15	Parotid	—	MALT	$\kappa$	No	No	No	No	No	No	Yes	No	No
16	Parotid	Centroblastic	Diffuse large B-cell	Neg	No	No	Yes	No	No	No	Yes	No	No

Abbreviations: VL, variable light chain; Exp, expression; trans, translocation; LMP, latent membrane protein.



**Fig 1.** NHL associated with SS (hematoxylin-eosin stains). (A) Case no. 13. Low-grade B-cell lymphoma of MALT type in the stomach, composed mainly of centrocyte-like cells with a few small lymphocytes and plasma cells. (B) Case no. 15. Low-grade B-cell lymphoma of MALT type in the parotid. Lymphoepithelial lesions are numerous, surrounded by centrocyte-like cells. (C) Case no. 6. Remnants of a germinal center in a low-grade B-cell lymphoma of MALT type in the parotid.



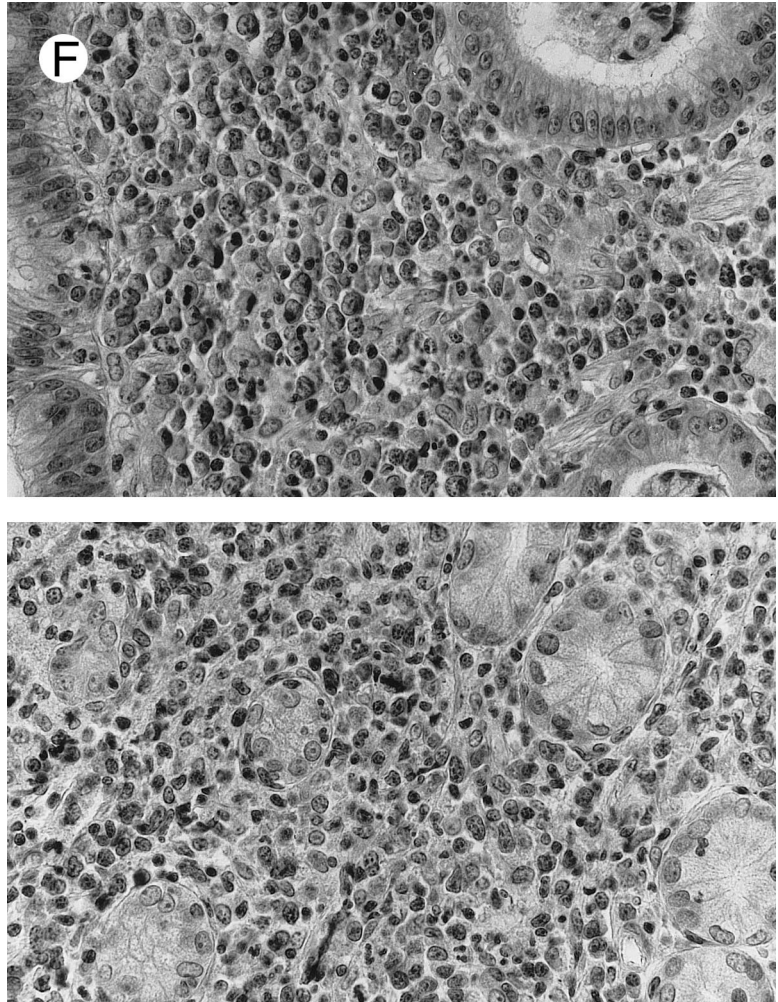
**Fig 1 (cont'd).** (D) Case no. 10. Immunocytoma in lymph node. The infiltrate is composed of small lymphocytes, plasma cells and blasts. (E) Case no. 14. Monocytoïd B-cell lymphoma in a cervical lymph node with a monocytoïd component located in dilated sinuses.

regardless of the tissue involved (Fig 1B). Monocytoïd cells characterized by a larger cytoplasm and a slightly irregular nucleus were mixed with centrocyte-like cells in 2 cases of MALT lymphoma arising in the parotid (cases no. 3 and 15). There were also scattered occasional large cells (centroblast or immunoblast). In cases no. 3, 6, and 15, remnants of germinal centers with partial follicular colonization were observed (Fig 1C). Beside these 9 low-grade-type mucosal lymphomas, 3 nodal lymphomas (cases no. 8, 10, and 14) had histological features similar to that of low-grade MALT type lymphoma because they showed a typical lymphoplasmacytoïd infiltration with a variable proportion of blasts. In 2 cases, the presence of numerous immunoblasts or centroblasts, mixed with small lymphoplasmacytoïd cells or plasma cells, indicated an evolution to a more aggressive lymphoma (Fig 1D). The third nodal lymphoma showed a small lymphocytic or lymphoplasmacytoïd diffuse infiltrate associated with intrasinusal large nests of monocytoïd cells. This histological picture is characteristic of monocytoïd B-cell lymphoma (MBLC; Fig 1E).

Diffuse large B-cell lymphomas (REAL classification)<sup>9</sup> or centroblastic lymphoma (Kiel classification)<sup>8</sup> were observed

in the last 4 cases, 1 nodal (case no. 9) and 3 extranodal, involving stomach, skin, and parotid (cases no. 2, 7, and 16). The gastric (case no. 2) and the skin (case no. 7) lymphomas were considered as a blastic transformation of a low-grade MALT-type lymphoma because large tumoral cells were mixed with a monoclonal plasmacytic cell component (Fig 1F). The pathological features of these high-grade lymphomas did not differ from conventional centroblastic lymphoma. A high-grade diffuse large B-cell lymphoma was also subsequently diagnosed in the retroperitoneal area 10 months after the initial bronchial low-grade MALT type lymphoma in 1 patient (case no. 5). Lastly, 1 patient (case no. 13) with a gastric low-grade MALT-type lymphoma subsequently developed a nonepidermotropic cutaneous CD4 T-cell lymphoma.

Aside from this latter T-cell lymphoma, the B phenotype of each lymphoma was confirmed by immunoreactivity with the pan-B antibody CD20. Most specimens contained variable mixed T-cell reactive with CD3 monoclonal antibody. Monotypic Ig  $\kappa$  light chains were noted on fixed section in 7 MALT lymphomas (cases no. 1, 2, 3, 4, 7, 12, and 15). Bcl-2 expression was found in 14 of the 16 lymphomas



**Fig 1 (cont'd). (F) Case no. 2. High-grade B-cell lymphoma in the stomach (centroblastic lymphoma; upper), with remnants of low-grade lymphoma of MALT type (lower).**

tested. p 53 expression was found in 1 of the 11 lymphomas tested (case no. 8). This patient had a nodal immunocytoma with approximately 10% of large cells, which were precisely the cells positive for the p53 protein.

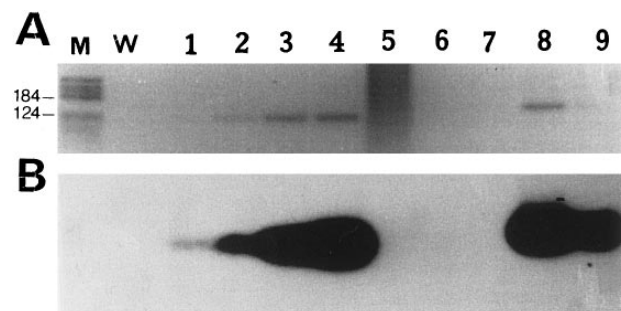
*H pylori* was present in 1 of the 4 gastric lymphomas (case no. 13); EBV LMP or EBV RNAs were not detected by immunohistochemistry and hybridization techniques, respectively, in the 16 cases.

**Detection of viral genes by PCR.** PCR to detect EBV was performed in 12 NHL biopsies, with 4 of them being parotid samples; EBV DNA was detected in 1 parotid lymphoma (case no. 16).

The pX gene of HTLV-1 was looked for by PCR in 12 NHL biopsies but was always absent. Lip biopsies were also tested in 3 of these 12 patients; 1 was positive (the gastric lymphoma of this patient was negative, however, for pX DNA).

HHV8 DNA was looked for by PCR in 8 NHL biopsies but was not detected.

**Detection of *bcl-2* rearrangement by PCR.** We looked for *bcl-2* rearrangements at the Mbr in 7 patients. Results are shown in Fig 2. *Bcl-2* rearrangement was detected in



**Fig 2. PCR amplification of *Bcl-2* rearrangement at the Mbr. (A) Reverse view of an ethidium bromide-stained agarose gel. (B) Southern blot analysis of PCR products hybridized with an internal Mbr oligoprobe (see Materials and Methods). M, molecular weight marker V (Boehringer Mannheim, Meylan, France); W, negative control (water). Lanes 1 through 4, positive control diluted  $10^{-5}$  to  $10^{-2}$ ; lane 5, case no. 2; lane 6, case no. 13; lane 7, case no. 16; lanes 8 and 9, case no. 5, detection of a *Bcl-2* rearrangement both in the bronchic MALT lymphoma (lane 8) and in the nodal large B-cell lymphoma (lane 9) occurring 2 years later.**

two samples from patient no. 5. This patient had a bronchial MALT lymphoma that progressed 10 months later into a retroperitoneal nodal large B-cell lymphoma. The t(14;18) translocation was detected in both the low-grade and the high-grade lymphoma.

*Detection of anti-p53 antibodies by ELISA.* p53 mutations are known to induce an increase in the half-life of the mutant p53, leading to the accumulation of the p53 protein in the tumor cells. Such accumulation can lead to a self-immunization process and the apparition of high levels of anti-p53 antibodies in the sera of patients that harbor a mutant p53 in their tumor.<sup>24</sup> The dosage of anti-p53 antibodies is a good alternative to assess the p53 status in a tumor. Anti-p53 antibodies were detected at a high titer in the sera of 2 of 14 tested patients (cases no. 8 and 14; Table 2). These 2 patients had a nodal immunocytoma and a lymphoplasmacytoid lymphoma, respectively. One of these patients (case no. 8) was also positive with p53 immunohistochemical assay; for the other patient, no material was available for p53 immunohistochemical assay.

#### DISCUSSION

The occurrence of NHL is the most serious complication of SS.<sup>2</sup> The risk of lymphoma in these patients reached 6.4 cases per 1,000 per year (44 times greater than in a normal population) in 136 women with SS observed for an average of 8.1 years.<sup>3</sup> Comparable results were obtained in several reports including a small number of patients with NHL.<sup>25-29</sup> No specific histological features or unique pathogenesis could be established in these studies. We therefore performed an extensive study with clinical, histological, phenotypical, virological, and molecular data of 16 NHL occurring in patients with an underlying SS.

Previous studies identified predisposing factors for the occurrence of NHL in SS patients: parotidomegaly, splenomegaly, lymphadenopathy, low-dose parotid irradiation, cytotoxic therapy,<sup>3</sup> the presence of a serum or urinary monoclonal component<sup>30</sup> or mixed cryoglobulinemia,<sup>29</sup> and a decrease in serum polyclonal Igs.<sup>31</sup> Our study was not a prospective analysis of SS patients and, therefore, we could not establish definite conclusions on the value of these predisposing factors. However, a history of parotid enlargement and irradiation was present in 1 patient and previous cytotoxic therapy had been administered in 4 patients (prednisone in 3 cases, methotrexate in 1 case, and azathioprine in 1 case). Three patients had a serum monoclonal Ig, 2 of them having a mixed type II cryoglobulin and 2 others having a decrease in serum polyclonal Igs occurring at the time of lymphoma diagnosis.

Various histological subtypes of NHL have been described in the literature of patients with SS: Waldenström's macroglobulinemia,<sup>31</sup> immunocytomas,<sup>27</sup> follicular lymphomas,<sup>32</sup> diffuse large B-cell lymphomas,<sup>3</sup> immunoblastic lymphomas,<sup>33</sup> and especially MALT lymphomas.<sup>34</sup> The recent description of monocytoid B-cell lymphomas (MBCL),<sup>35-37</sup> which appears as the nodal counterpart of MALT lymphomas<sup>38</sup> (the term marginal zone B-cell lymphoma [MZL] has been proposed to encompass both entities<sup>39</sup>), allows a reinterpretation of the various histological subtypes of NHL de-

scribed in patients with SS. Both variants (MALT and MBCL lymphomas) involve the marginal B-cell compartment of lymphoid tissue outside the follicular mantle zone, share the same propensity of plasmacytic differentiation and a distinctive immunological phenotype, and often exhibit a similar chromosomal abnormality (trisomy 3 in 50% of the cases).<sup>39</sup> Furthermore, MZL can progress to high-grade large B-cell lymphomas.<sup>40,41</sup> In the light of these data, a large number of NHLs in SS patients reported in the literature can be reclassified as MZL either of low-grade or of low-grade transformed into high-grade lymphomas. Our study provides arguments in favor of this interpretation. Indeed, low-grade MZL were diagnosed in 12 of the 16 patients, 9 of MALT type in mucosal sites and 3 exclusively nodal. The 4 other patients presented with a high-grade B-cell lymphoma that was probably a histological transformation of an underlying low-grade MZL at least in 3 of the cases involving skin, stomach, and parotid, respectively, and in which large tumoral cells were mixed with a monoclonal plasmacytic component. Lastly, T-cell lymphomas, as observed in case no. 13, have been described only rarely in patients with SS.<sup>42</sup>

In nearly half of the cases (7 cases), lymphomas arise in a main target of the sicca syndrome, ie, the parotid gland. The benign lympho-epithelial lesions characteristic of SS are composed by a majority of CD4 T-cell lymphocytes<sup>43</sup> that secrete interleukin 2,  $\gamma$ -interferon, and interleukin-10<sup>44</sup> and by a minority of B-cell lymphocytes that are often oligoclonal.<sup>45,46</sup> A similar T-cell CD4 lymphoid hyperplasia may be present in lacrimal glands, lungs, and kidneys of SS patients.<sup>47</sup> These T cells may contribute significantly to B-lymphocyte hyperactivity.<sup>48</sup> Aside from this characteristic T-cell CD4 hyperplasia, the term pseudolymphoma has been used to coin an unusual presumably benign parotid lymphoid infiltration. In the original description,<sup>31</sup> the infiltrate was described as being composed of small lymphocytes, plasma cells, immunoblasts, and a distinct mononuclear cell population that most likely represents monocytoid B lymphocytes. Thus, what was called pseudolymphoma in the literature corresponds probably in most cases to slowly progressive MALT/MBCL. The possibility that detection of clonal B cells by PCR may help to distinguish MALT/MBCL from benign lympho-epithelial lesions remains controversial. In one study, 14 of 14 (100%) labial salivary gland (LSG) specimens of SS patients exhibited oligoclonal or monoclonal Ig gene rearrangements by PCR<sup>45</sup>; in 1 patient with lymphoma, tumor and LSG specimens obtained at the same time displayed different Ig gene rearrangements. However, in another study, monoclonal B cells were detected by PCR in only 11 of 76 (15%) LSG specimens of SS patients<sup>49</sup>; 4 of these 11 patients subsequently developed extrasalivary lymphoma and in each case the rearranged bands in the lip biopsy and the lymphoma were of the same size. Likewise, in another study, the use of a VH CDR3 allele-specific probe showed that benign lymphoepithelial lesions of stomach and salivary glands present 13 and 2 years, respectively, before the onset of a gastric lymphoma contained B cells with a rearranged heavy chain identical to that found in the late lymphoma.<sup>50</sup> Therefore, one of the B cells present in benign lymphoepithelial lesions evolved to malignant lymphoma probably because of additional genetic events.

The data given above suggest that the development of lymphoma in SS involves a multistep process, possibly the sequential activation of proto-oncogenes by translocations or mutations and/or viral infection. Using a PCR detecting translocations focused in the major breakpoint region,<sup>51</sup> we detected a t(14;18) translocation in 1 of 8 lymphomas tested. Interestingly, this patient had a bronchial MALT lymphoma that progressed 10 months later into a nodal large B-cell lymphoma. The t(14;18) translocation was detected in both the low-grade and the high-grade lymphoma. The t(14;18) translocation is usually not present in MZL.<sup>39</sup> However, it was already detected by two groups in a subset of Sjögren's lymphomas.<sup>26,52</sup> Pisa et al<sup>26</sup> found the t(14;18) translocation in 5 of 7 SS-associated salivary lymphomas. It was not present, either in prelymphoma biopsies from these patients, even though they exhibited oligoclonal B-cell rearrangements, or in 50 salivary gland biopsies of SS patients. We studied the expression of the bcl-2 protein in the 16 lymphoma specimens. The bcl-2 protein was expressed in 14 of these 16 lymphomas, as expected in low-grade MZL, which are usually considered to overexpress the bcl-2 protein<sup>53</sup> without rearrangement of the bcl-2 gene.<sup>39</sup>

Mutations of the tumor-suppressor activity gene p53 have been observed in lymphomas and have been associated with progression of low-grade MALT lymphoma to high-grade.<sup>54</sup> This inactivation of p53 activity is accompanied by an overexpression of the p53 protein and in half of the cases by detection of serum anti-p53 antibodies.<sup>24</sup> We detected serum anti-p53 antibodies in 2 of the 14 patients studied (cases no. 8 and 14); these 2 patients had a nodal MZL. One of these 2 patients could be tested with p53 immunohistochemically assay and was positive in a small component of large cells that represented approximately 10% of lymphoma cells. Despite this minor component of large cells, this patient could not be considered to have a transformation of low-grade MZL into large B-cell lymphoma.

We also looked for the presence of viruses in these lymphomas because they have been implicated in the etiology of some sicca syndromes.<sup>6</sup> We focused on the potential role of EBV in the pathogenesis of SS-associated lymphomas because the frequency of EBV genes or protein expression is increased in labial salivary gland biopsies from patients with SS in comparison with control subjects.<sup>15,55</sup> However, LMP protein and Eber RNAs were not detected in the 16 SS-associated NHL biopsies. Using PCR, EBV was detected in only 1 of 4 parotid lymphomas, as could be expected in normal salivary glands. Likewise, Fox et al<sup>56</sup> found EBV DNA in only 1 of 14 NHL in SS patients. It is not so surprising that Sjögren's lymphomas are not associated with EBV because the virus, when present in LSG of SS patients, is detected in epithelial cells by *in situ* hybridization.<sup>15</sup> Moreover, EBV is present in lymphomas occurring in immunosuppressed patients<sup>57</sup>; that is not the case in Sjögren's patients. Interestingly, patients with connective tissue diseases treated with low-dose methotrexate may develop EBV-associated lymphoproliferative disorders that usually achieve CR after methotrexate withdrawal.<sup>58</sup> One of our patients (case no. 7) was treated with methotrexate for 3 years before diffuse large-cell lymphoma occurred. However, it is unlikely

that methotrexate might have a role in the development of the lymphoma of this patient because it had none of the above-mentioned characteristics of methotrexate-associated lymphomas.

Recently, another herpes virus termed HHV8 has been found to be associated not only with Kaposi's sarcoma<sup>18</sup> but also with body cavity lymphomas, Castleman disease, and some lymphoid hyperplasia occurring in autoimmune diseases.<sup>59</sup> Therefore, we looked for HHV8 by PCR in SS-associated lymphomas. However, this study was negative. None of our patients had HCV infection, which may be associated with some sicca syndrome<sup>60</sup> and in some countries with lymphomas.<sup>61</sup> Lastly, because the pX gene of the retrovirus HTLV-1 has been detected in labial salivary glands from some Japanese and French SS patients seronegative for HTLV-1,<sup>17,62</sup> we looked for the presence of this gene in SS-associated lymphomas, but it was not detectable by PCR. Three of the 16 SS patients with lymphoma were also tested for the presence of HTLV-1 pX sequences in LSG. One of them was positive; however, the gastric lymphoma of this patient did not contain the pX sequence.

In conclusion, lymphomas occurring in patients with an underlying SS are in most cases MZL. Chemotherapy is usually efficient and long-term survival in CR or PR is common in these patients. These lymphomas are not associated with viruses known to be present in other types of lymphomas. Some of the translocations or mutations of oncogenes or antioncogenes described in other lymphomas are detected in SS-associated lymphomas. However, we could not detect a recurrent molecular abnormality that could have given new insights into a common pathogenesis for these lymphomas.

#### ACKNOWLEDGMENT

The authors are indebted to Dr Luc Marcellin and Dr Bernard Gasser for providing samples from Strasbourg; to Prof Frédéric Morinet, Prof François Sigaux, and Dr Patrick Cherot for help and advice; and to Martine Brunet and Laurence Grollet for technical assistance.

#### REFERENCES

1. Fox RI, Howell FV, Bone RC, Michelson P: Primary Sjögren syndrome: Clinical and immunopathologic features. *Semin Arthritis Rheum* 14:77, 1984
2. Kassan SS, Thomas TL, Moutsopoulos HM, Hoover R, Kimberley RP, Budman DR, Costa J, Decker JL, Chused TM: Increased risk of lymphoma in sicca syndrome. *Ann Intern Med* 89:888, 1978
3. Zulman J, Jaffe R, Talal N: Evidence that the malignant lymphoma of Sjögren's syndrome is a monoclonal B-cell neoplasm. *N Engl J Med* 299:1215, 1978
4. Anderson LG, Talal N: The spectrum of benign to malignant lymphoproliferation in Sjögren's syndrome. *Clin Exp Immunol* 10:199, 1972
5. Anaya JM, McGuff HS, Banks PM, Talal N: Clinicopathological factors relating malignant lymphoma with Sjögren's syndrome. *Semin Arthritis Rheum* 25:337, 1996
6. Mariette X: Sjögren's syndrome and virus. *Ann Med Interne* 146:243, 1995
7. Fox RI, Robinson CA, Curd JG, Kozin F, Howell FV: Sjögren's syndrome. Proposed criteria for classification. *Arthritis Rheum* 29:577, 1986
8. Stansfeld A, Diebold J, Kapanci Y, Kelenyi G, Lennert K,



- Mioduszewska O, Noel H, Rilke F, Sundstrom C, Van Unnik J, Wright D: Updated Kiel classification for lymphomas. *Lancet* 1:292, 1988
9. Harris NL, Jaffe ES, Stein H, Banks PM, Chan JKC, Cleary ML, Delsol G, De Wolf-Peters C, Falini B, Gatter KC, Grogan TM, Isaacson PG, Knowles DM, Mason DY, Muller-Hermeling HK, Pileri SA, Piris MA, Ralfkiaer E, Warnke RA: A revised European-American classification of lymphoid neoplasms: A proposal from the International Lymphoma Study Group. *Blood* 84:1361, 1994
  10. Rouse R, Warnke R: Special applications of tissue section immunologic staining in the characterization of monoclonal antibodies and in the study of normal and neoplastic tissues, in Weir DM, Blackwell CL, Herzenberg LA (eds): *Handbook of Experimental Immunology*. Edinburgh, UK, Blackwell, 1986 Vol 4, p 116-1
  11. Tenaud C, Negoescu A, Labat-Moleur F, Legros Y, Soussi T, Brambilla E: p53 immunolabeling in archival paraffin-embedded tissues: Optimal protocol based on microwave heating for eight antibodies on lung carcinomas. *Mod Pathol* 7:853, 1994
  12. Jacobs TW, Prioleau JE, Stillman IE, Schnitt SJ: Loss of tumor marker-immunostaining intensity on stored paraffin slides of breast cancer. *J Natl Cancer Inst* 88:1054, 1996
  13. Shibita DK, Arnheim N, Martin WJ: Detection of human papillomavirus in paraffin-embedded tissue using the polymerase chain reaction. *J Exp Med* 167:225, 1988
  14. Longo MC, Bernger MS, Hartley JL: Use of uracil DNA-glycosylase to control carry-over contamination in polymerase chain reactions. *Gene* 93:125, 1990
  15. Mariette X, Gozlan J, Clerc D, Bisson M, Morinet F: Detection of Epstein-Barr virus DNA by *in situ* hybridization and polymerase chain reaction in salivary gland biopsy specimens from patients with Sjögren's syndrome. *Am J Med* 90:286, 1991
  16. Kwok S, Ehrlich G, Poiesz B, Kalish R, Sninsky JJ: Enzymatic amplification of HTLV-I viral sequences from peripheral blood mononuclear cells and infected tissues. *Blood* 72:1117, 1988
  17. Mariette X, Agbalika F, Daniel MT, Bisson M, Lagrange P, Brouet JC, Morinet F: Detection of HTLV1 tax gene in salivary gland epithelium from two patients with Sjögren's syndrome. *Arthritis Rheum* 36:1423, 1993
  18. Chang Y, Cesarman E, Pessin MS, Lee F, Culpepper J, Knowles DM, Moore PS: Identification of Herpes virus-like DNA sequences in AIDS-associated Kaposi's sarcoma. *Science* 266:1865, 1994
  19. Cesarman E, Moore PS, Rao PH, Inghirami G, Knowles DM, Chang Y: *In vitro* establishment and characterization of two acquired immunodeficiency syndrome-related lymphoma cell lines (BC-1 and BC-2) containing Kaposi's sarcoma-associated Herpes virus-like (KHSV) DNA sequences. *Blood* 86:2708, 1995
  20. Gribben JG, Freedman AS, Woo SD, Blake K, Shu RS, Freeman G, Longtine JA, Pinkus GS, Nadler LM: All advanced stage non-Hodgkin's lymphomas with a PCR amplifiable bcl-2 translocation have residual cells containing the bcl-2 rearrangement at evaluation and following treatment. *Blood* 78:3275, 1991
  21. Crescenzi M, Seto M, Herzog GP, Weiss PD, Griffith RC, Korsmeyer SJ: Thermostable polymerase chain amplification of t(14;18) chromosome breakpoints and detection of minimal residual disease. *Proc Natl Acad Sci USA* 85:4869, 1988
  22. Lubin R, Schlichtholz B, Teillaud JL, Gray E, Bussel A, Wild CP, Soussi T: p53 antibodies in patients with various types of cancer: Assay, identification, and characterization. *Clin Cancer Res* 1:1463, 1995
  23. Morel P, Quiquandon I, Janin A, Dupriez B, Desablens B, Gosselin B, Bauters F: High incidence of lymphoid infiltration on labial salivary gland biopsy in non-Hodgkin's lymphomas: Clinical implications. *Br J Haematol* 85:93, 1993
  24. Soussi T: The humoral response to the tumor-suppressor gene product p53 in human cancer: Implications for diagnosis and therapy. *Immunol Today* 17:354, 1996
  25. Bloch KJ, Buchanan WW, Wohl MJ, Bunim JJ: Sjögren's syndrome. A clinical, pathological and serological study of 62 cases. *Medicine* 44:187, 1965
  26. Pisa EK, Pisa P, Kang HI, Fox RI: High frequency of t(14;18) translocation in salivary gland lymphomas from Sjögren's syndrome patients. *J Exp Med* 174:1245, 1991
  27. Pariente D, Anaya JM, Combe B, Jorgensen C, Emberger JM, Rossi JF, Sany J: Non-Hodgkin's lymphoma associated with primary Sjögren's syndrome. *Eur J Med* 1:337, 1992
  28. Kruize AA, Hene RJ, Van Der Heide A, Bodeutsch C, De Wilde PCM, Van Bijsterveld OP, De Jong J, Feltkamp TEW, Kater L, Bijlsma JWJ: Long-term follow up of patients with Sjögren's syndrome. *Arthritis Rheum* 39:297, 1996
  29. Tzioufas AG, Boumba DS, Skopouli FN, Moutsopoulos HM: Mixed monoclonal cryoglobulinemia and monoclonal rheumatoid factor cross-reactive idiotypes as predictive factors for the development of lymphoma in primary Sjögren's syndrome. *Arthritis Rheum* 39:767, 1996
  30. Walters MT, Stevenson FK, Herbert A, Cawley MID, Smith JL: Urinary monoclonal free light chains in primary Sjögren's syndrome: An aid to the diagnosis of malignant lymphoma. *Ann Rheum Dis* 45:210, 1986
  31. Talal N, Sokoloff L, Barth WF: Extrasalivary lymphoid abnormalities in Sjögren's syndrome (reticulum cell sarcoma, "pseudolymphoma", macroglobulinemia). *Am J Med* 43:50, 1967
  32. Hyman GA, Wolff M: Malignant lymphoma of salivary glands. *Am J Clin Pathol* 65:421, 1976
  33. Schmid U, Helbron D, Lennert K: Development of malignant lymphoma in myoepithelial sialadenitis (Sjögren's syndrome). *Virchows Arch A* 385:11, 1982
  34. Isaacson PG, Spencer J: Malignant lymphoma of mucosa-associated lymphoid tissue. *Histopathology* 11:445, 1987
  35. Sheibani K, Burke JS, Swartz WG, Nademanee A, Winberg CD: Monocytoid B-cell lymphoma. *Cancer* 62:1531, 1988
  36. Ngan BY, Warnke RA, Wilson M, Takagi K, Cleary ML, Dorfman RF: Monocytoid B-cell lymphoma: A study of 36 cases. *Hum Pathol* 22:409, 1991
  37. Shin SS, Sheibani K, Fishleder A, Ben-Ezra J, Bailey A, Koo CH, Burke JS, Tubbs R, Rappaport H: Monocytoid B-cell lymphoma in patients with Sjögren's syndrome: A clinicopathologic study of 13 patients. *Hum Pathol* 22:422, 1991
  38. Nizze H, Cogliatti SB, Von Schilling C, Feller AC, Lennert K: Monocytoid B-cell lymphoma: Morphological variants and relationship to low-grade B-cell lymphoma of the mucosa-associated lymphoid tissue. *Histopathology* 18:403, 1991
  39. Dierlamm J, Pittaluga S, Wlodarska I, Stul M, Thomas J, Boogaerts M, Michaux L, Driessen A, Mecucci C, Cassiman JJ, De Wolf-Peters C, Van den Berghe H: Marginal zone B-cell lymphomas of different sites share similar cytogenetic and morphologic features. *Blood* 87:299, 1996
  40. Chan JKC, Isaacson PG: Relationship between high-grade lymphoma and low-grade B-cell mucosa-associated lymphoid tissue lymphoma (MALToma) of the stomach. *Am J Pathol* 136:1153, 1990
  41. Montalban C, Manzanal A, Castrillo JM, Escribano L, Bellas C: Low grade gastric B-cell MALT lymphoma progressing into high grade lymphoma. Clonal identity of the two stages of the tumour, unusual bone involvement and leukaemic dissemination. *Histopathology* 27:89, 1995
  42. Wilke WS, Tubbs RR, Bukowski RM, Currie TE, Calabrese LH, Weiss RA, Savage RA, Sebek BA: T cell lymphoma occurring in Sjögren's syndrome. *Arthritis Rheum* 27:951, 1984
  43. Adamson TC, Fox RI, Frisman DM, Howell FV: Immunohis-

tologic analysis of lymphoid infiltrates in primary Sjögren's syndrome using monoclonal antibodies. *J Immunol* 130:203, 1983

44. Fox RI, Kang HI, Ando D, Abrams J, Pisa E: Cytokine mRNA expression in salivary gland biopsies of Sjögren's syndrome. *J Immunol* 152:5532, 1994

45. Pablos JL, Carreira PE, Morillas L, Montalvo G, Ballestin C, Gomez-Reino JJ: Clonally expanded lymphocytes in the minor salivary glands of Sjögren's syndrome patients without lymphoproliferative disease. *Arthritis Rheum* 37:1441, 1994

46. Fishleder A, Tubbs R, Hesse B, Levine H: Uniform detection of immunoglobulin-gene rearrangement in benign lymphoepithelial lesions. *N Engl J Med* 316:1118, 1987

47. Rosenberg ME, Schendel PB, McCurdy FA, Platt JL: Characterization of immune cells in kidneys from patients with Sjögren's syndrome. *Am J Kidney Dis* 11:20, 1988

48. Fox RI, Adamson TC, Fong S, Robinson CA, Morgan EL, Robb JA, Howell FV: Lymphocyte phenotype and function in pseudolymphoma associated with Sjögren's syndrome. *J Clin Invest* 72:52, 1983

49. Jordan R, Diss TC, Lench NJ, Isaacson PG, Speight PM: Immunoglobulin gene rearrangements in lymphoplasmacytic infiltrates of labial salivary glands in Sjögren's syndrome. A possible predictor of lymphoma development. *Oral Surg Oral Med Oral Pathol Oral Radiol Endod* 79:723, 1995

50. Diss TC, Peng H, Wotherspoon AC, Pan L, Speight PM, Isaacson PG: Brief report: A single neoplastic clone in sequential biopsy specimens from a patient with primary gastric-mucosa-associated lymphoid-tissue lymphoma and Sjögren's syndrome. *N Engl J Med* 329:172, 1993

51. Weiss LM, Warnke RA, Sklar J, Cleary ML: Molecular analysis of the t(14;18) chromosomal translocation in malignant lymphomas. *N Engl J Med* 317:1185, 1987

52. Nagai K: Sjögren's syndrome associated with non-Hodgkin's lymphoma. *Nippon Rinsho* 53:2574, 1995

53. Navratil E, Gaulard P, Kanavaros P, Audouin J, Bougaran J,

Martin N, Diebold J, Mason DY: Expression of the bcl-2 protein in B cell lymphomas arising from mucosa associated lymphoid tissue. *J Clin Pathol* 48:18, 1995

54. Du M, Peng H, Singh N, Isaacson PG, Pan L: The accumulation of p53 abnormalities is associated with progression of mucosa-associated lymphoid tissue lymphoma. *Blood* 86:4587, 1995

55. Fox RI, Pearson G, Vaughan JH: Detection of Epstein-Barr virus associated antigens and DNA in salivary gland biopsies from patients with Sjögren's syndrome. *J Immunol* 137:3162, 1986

56. Fox RI, Luppi M, Kang HI, Pisa P: Reactivation of Epstein-Barr virus in Sjögren's syndrome. *Semin Immunopathol* 13:217, 1991

57. Cohen JI: Epstein-Barr virus lymphoproliferative disease associated with acquired immunodeficiency. *Medicine* 70:137, 1991

58. Salloum E, Cooper DL, Howe G, Lacy J, Tallini G, Crouch J, Schultz M, Murren J: Spontaneous regression of lymphoproliferative disorders in patients treated with methotrexate for rheumatoid arthritis and other rheumatic diseases. *J Clin Oncol* 14:1943, 1996

59. Luppi M, Barozzi P, Maiorana A, Artusi T, Trovato R, Marasca R, Savarino M, Ceccherini-Nelli L, Torelli G: Human herpes virus-8 DNA sequences in human immunodeficiency virus-negative angioimmunoblastic lymphadenopathy and benign lymphadenopathy with giant germinal center hyperplasia and increased vascularity. *Blood* 87:3903, 1996

60. Mariette X, Zerbib M, Jaccard A, Schenmetzler C, Danon F, Clauvel JP: Hepatitis C virus and Sjögren's syndrome. *Arthritis Rheum* 36:280, 1993

61. Ferri C, Caracciolo F, Zignego AL, La Civita L, Monti M, Longombardo G, Lombardini F, Greco F, Capochiani E, Mazzoni A, Mazzaro C, Pasero G: Hepatitis C virus infection in patients with non-Hodgkin's lymphoma. *Br J Haematol* 88:392, 1994

62. Sumida T, Yonaha F, Maeda T, Kita Y, Iwamoto I, Koiko T, Yoshida S: Expression of sequences homologous to HTLV-1 *tax* gene in the labial salivary glands of Japanese patients with Sjögren's syndrome. *Arthritis Rheum* 37:545, 1994