

## TO THE EDITOR:

# Clonal hematopoiesis is not significantly associated with COVID-19 disease severity

Yifan Zhou,<sup>1-3</sup> Ruba Shalhoub,<sup>4</sup> Stephanie N. Rogers,<sup>1</sup> Shiqin Yu,<sup>2</sup> Muxin Gu,<sup>1,3</sup> Margarete A. Fabre,<sup>1,3,5</sup> Pedro M. Quiros,<sup>1,3</sup> Tae-Hoon Shin,<sup>2,6</sup> Arch Diangson,<sup>7</sup> Wenhan Deng,<sup>7</sup> Shubha Anand,<sup>7</sup> Wenhua Lu,<sup>8</sup> Matthew Cullen,<sup>8</sup> Anna L. Godfrey,<sup>9</sup> Jacobus Preller,<sup>10</sup> Jerome Hadjadj,<sup>11</sup> Emmanuelle Jouanguy,<sup>12,13</sup> Aurélie Cobat,<sup>12,13</sup> Laurent Abel,<sup>12-14</sup> Frederic Rieux-Laucat,<sup>15</sup> Benjamin Terrier,<sup>11</sup> Alain Fischer,<sup>16,17</sup> Lara Novik,<sup>18</sup> Ingelise J. Gordon,<sup>18</sup> Larisa Strom,<sup>18</sup> Martin R. Gaudinski,<sup>18</sup> Andrea Lisco,<sup>19</sup> Irini Sereti,<sup>19</sup> Thomas J. Gniadek,<sup>20</sup> Andrea Biondi,<sup>21</sup> Paolo Bonfanti,<sup>22</sup> Luisa Imberti,<sup>23</sup> Clifton L. Dalgard,<sup>24</sup> Yu Zhang,<sup>25,26</sup> Kerry Dobbs,<sup>26</sup> Helen C. Su,<sup>25-27</sup> Luigi D. Notarangelo,<sup>25,26</sup> COVID-STORM Clinicians, NIAID Immune Response to COVID Group, The ISARIC4C Investigators, Colin O. Wu,<sup>4</sup> Peter J. M. Openshaw,<sup>28</sup> Malcolm G. Semple,<sup>29</sup> Ziad Mallat,<sup>30-32,\*</sup> Kenneth Baillie,<sup>33-35,\*</sup> Cynthia E. Dunbar,<sup>2,\*</sup> and George S. Vassiliou<sup>1,3,5,\*</sup>

<sup>1</sup>Wellcome-MRC Cambridge Stem Cell Institute, University of Cambridge, Cambridge, UK; <sup>2</sup>Translational Stem Cell Biology Branch, National Heart, Lung, and Blood Institute, National Institutes of Health (NIH), Bethesda, MD; <sup>3</sup>Wellcome Sanger Institute, Wellcome Genome Campus, Hinxton, Cambridge, UK; <sup>4</sup>Office of Biostatistics Research, National Heart, Lung, and Blood Institute, NIH, Bethesda, MD; <sup>5</sup>Department of Haematology, Cambridge University Hospitals NHS Foundation Trust, Cambridge, UK; <sup>6</sup>Department of Laboratory Animal Medicine, College of Veterinary Medicine, Jeju National University, Jeju, Republic of Korea; <sup>7</sup>Cancer Molecular Diagnostics Laboratory, University of Cambridge, Cambridge, UK; <sup>8</sup>East Genomic Laboratory Hub, Cambridge University Hospital NHS Foundation Trust, Cambridge, UK; <sup>9</sup>Haematopathology and Oncology Diagnostics Service, Cambridge University Hospitals NHS Foundation Trust, Cambridge, UK; <sup>10</sup>John Farman Intensive Care Unit, Cambridge University Hospital, Cambridge, UK; <sup>11</sup>Department of Internal Medicine, National Reference Center for Rare Systemic Autoimmune Diseases, Assistance Publique-Hôpitaux de Paris, APHP.CUP, Hôpital Cochin, Paris Cité University, Paris, France; <sup>12</sup>Laboratory of Human Genetics of Infectious Diseases, Necker Branch, INSERM U1163, Paris, France; <sup>13</sup>University of Paris, Imagine Institute, Paris, France; <sup>14</sup>St. Giles Laboratory of Human Genetics of Infectious Diseases, Rockefeller Branch, The Rockefeller University, New York, NY; <sup>15</sup>Laboratory of Immunogenetics of Pediatric Autoimmune Diseases, Université de Paris, Institut Imagine, INSERM UMR 1163, Paris, France; <sup>16</sup>Université de Paris, Institut Imagine, and Paediatric Immuno-Haematology and Rheumatology Department, Necker-Enfants Malades University Hospital, Assistance Publique-Hôpitaux de Paris, Paris, France; <sup>17</sup>Collège de France, Paris, France; <sup>18</sup>Vaccine Research Center, National Institute of Allergy and Infectious Diseases, NIH, Bethesda, MD; <sup>19</sup>HIV Pathogenesis Section, Laboratory of Immunoregulation, National Institute of Allergy and Infectious Diseases, NIH, Bethesda, MD; <sup>20</sup>Department of Pathology and Laboratory Medicine, NorthShore University Health System, Evanston, IL; <sup>21</sup>Pediatric Department and Centro Tettamanti-European Reference Network PaedCan, Euro-BloodNet, MetabERN-University of Milano-Bicocca-Fondazione MBBM-Ospedale San Gerardo, Monza, Italy; <sup>22</sup>Department of Infectious Diseases, San Gerardo Hospital-University of Milano-Bicocca, Monza, Italy; <sup>23</sup>CREA Laboratory (AIL Center for Hemato-Oncologic Research), Diagnostic Department, ASST Spedali Civili di Brescia, Brescia, Italy; <sup>24</sup>Primer, Uniformed Services University of the Health Sciences, Bethesda, MD; <sup>25</sup>Laboratory of Clinical Immunology and Microbiology, Division of Intramural Research, National Institute of Allergy and Infectious Diseases, NIH, Bethesda, MD; <sup>26</sup>National Institute of Allergy and Infectious Diseases Clinical Genomics Program, NIH, Laboratory of Clinical Immunology and Microbiology, Division of Intramural Research, National Institute of Allergy and Infectious Diseases, NIH, Bethesda, MD; <sup>27</sup>Department of Pathology and Laboratory Medicine, Perelman School of Medicine, University of Pennsylvania, Philadelphia, PA; <sup>28</sup>National Heart and Lung Institute, Imperial College London, Chelsea, London, UK; <sup>29</sup>NIHR Health Protection Research Unit in Emerging and Zoonotic Infections, Institute of Infection, Veterinary and Ecological Sciences, Faculty of Health and Life Sciences, University of Liverpool, Liverpool, UK; <sup>30</sup>Division of Cardiovascular Medicine, Department of Medicine, University of Cambridge, Cambridge, UK; <sup>31</sup>INSERM U970, Paris Cardiovascular Research Center, Paris, France; <sup>32</sup>Université Paris Descartes, Sorbonne Paris Cité, Paris, France; <sup>33</sup>Roslin Institute, University of Edinburgh, Edinburgh, UK; <sup>34</sup>MRC Human Genetics Unit, Institute of Genetics and Molecular Medicine, University of Edinburgh, Western General Hospital, Edinburgh, UK; and <sup>35</sup>Intensive Care Unit, Royal Infirmary of Edinburgh, Edinburgh, UK

The severity of COVID-19 disease, caused by severe acute respiratory syndrome coronavirus 2 (SARS-CoV-2), is highly variable ranging from asymptomatic to a self-limited flulike illness to severe respiratory failure, often accompanied by cardiovascular events, coagulopathy, thrombosis, and high mortality.<sup>1-3</sup> Although several risk factors for severe disease have been identified, including age, sex, ethnicity, genetic variation, and a range of comorbidities, these only partially predict disease severity and additional determinants remain to be identified.<sup>2-6</sup>

Clonal hematopoiesis (CH) describes the disproportionate expansion of a hematopoietic stem cell and its progeny, in association with leukemia-associated somatic mutations, most commonly affecting the genes for epigenetic regulators *DNMT3A*, *TET2*, and *ASXL1*.<sup>7,8</sup> The prevalence and size of such clones rise with age, in association with changes in the driver gene landscape.<sup>9</sup> CH is associated with an increased risk of

hematologic malignancies, but also of cardiovascular disease (CVD), independently of other known CVD risk factors.<sup>10,11</sup> The basis for this increased CVD risk has been linked to hyper-inflammatory positive feedback loops driven by increased cytokine release from clonal myeloid cells, particularly interleukin-6 and interleukin-1 $\beta$ .<sup>12-16</sup>

The close association of CH with advancing age and chronic inflammation led us to hypothesize that it may be another factor associated with increased risk of severe COVID-19 disease, through hyperactivation of abnormal, clonally derived, myeloid cells, including monocytes and macrophages, following SARS-CoV-2 infection.

To investigate a possible association between CH and COVID-19 disease severity, we studied 568 patients aged 50 to 90 years old (median age, 64 years), including 120 nonhospitalized

**Table 1. COVID-19 patients characteristics**

	Nonhospitalized	Hospitalized	ICU	Total
Total N	120	241	207	568
<b>Age, y</b>				
50-59	6 (5%)	90 (37%)	61 (29%)	157 (28%)
60-69	104 (86%)	50 (21%)	77 (37%)	231 (41%)
70-79	8 (7%)	67 (28%)	53 (26%)	128 (23%)
80+	2 (2%)	34 (14%)	16 (8%)	52 (9%)
<b>Sex</b>				
Female	71 (59%)	107 (45%)	48 (23%)	226 (40%)
Male	49 (41%)	134 (55%)	159 (77%)	342 (60%)
<b>Ethnicity</b>				
White	114 (95%)	196 (81%)	143 (69%)	453 (80%)
Non-White	6 (5%)	27 (11%)	35 (17%)	68 (12%)
Other	0 (0%)	8 (3%)	21 (10%)	29 (5%)
NA	0 (0%)	10 (4%)	8 (4%)	18 (3%)
<b>Smoking</b>				
Never	40 (33%)	134 (56%)	107 (52%)	281 (49%)
Former	26 (22%)	69 (29%)	62 (30%)	157 (28%)
Current	0 (0%)	8 (3%)	7 (3%)	15 (3%)
Missing	54 (45%)	30 (12%)	31 (15%)	115 (20%)
<b>Hypertension</b>				
No	38 (32%)	24 (10%)	21 (10%)	83 (15%)
Yes	31 (26%)	24 (10%)	33 (16%)	88 (15%)
Missing	51 (41%)	193 (80%)	153 (74%)	397 (70%)
<b>CVD</b>				
No	61 (51%)	172 (71%)	154 (74%)	387 (68%)
Yes	8 (6%)	64 (27%)	47 (23%)	119 (21%)
Missing	51 (43%)	5 (2%)	6 (3%)	62 (11%)
<b>COPD/asthma</b>				
No	56 (47%)	194 (80%)	174 (84%)	424 (75%)
Yes	14 (12%)	41 (17%)	27 (13%)	82 (14%)
Missing	50 (42%)	6 (3%)	6 (3%)	62 (11%)
<b>Diabetes</b>				
No	56 (47%)	176 (73%)	138 (67%)	370 (65%)
Yes	9 (7%)	59 (24%)	62 (30%)	130 (23%)
Missing	55 (46%)	6 (3%)	7 (3%)	68 (12%)
<b>Cancer (neoplasm and hematological)</b>				
No	66 (55%)	208 (86%)	190 (92%)	464 (82%)
Yes	4 (3%)	22 (9%)	11 (6%)	38 (7%)
Missing	50 (42%)	11 (5%)	5 (2%)	66 (12%)
<b>Immunodeficiency</b>				
No	71 (59%)	204 (85%)	181 (88%)	456 (80%)
Yes	0	30 (12%)	17 (8%)	47 (8%)
Missing	49 (41%)	7 (3%)	9 (4%)	65 (11%)

COPD, chronic obstructive pulmonary disease; NA, not available.

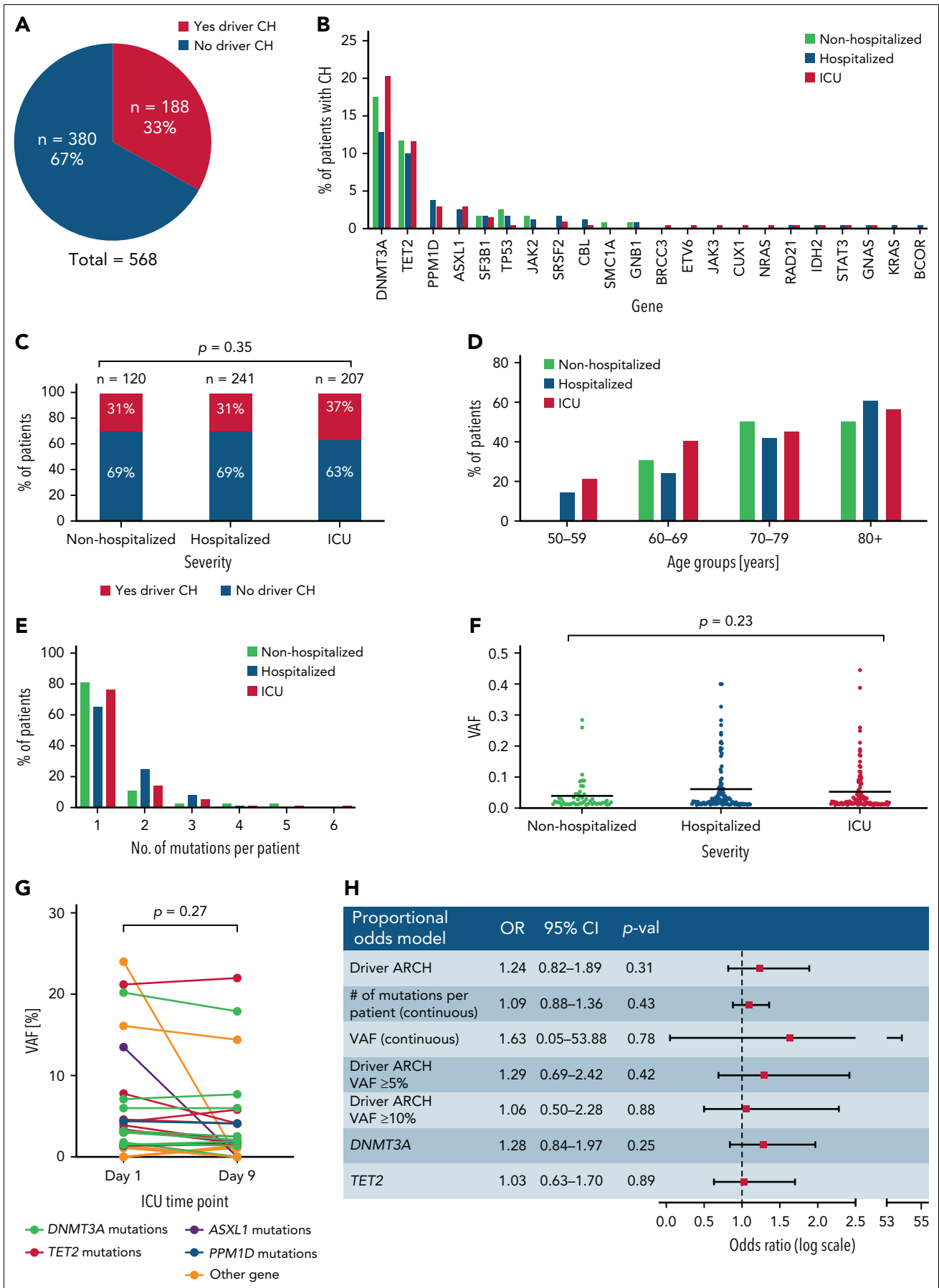


Figure 1.

individuals with asymptomatic or mild disease, 241 hospitalized patients not requiring intensive care unit (ICU) support, and 207 critically ill patients who required ICU admission, or mechanical ventilation or went on to die (Table 1). All patients had laboratory-confirmed SARS-CoV-2 infection during the first 6 months of 2020. All participants provided written informed consent as part of ethics committee-approved studies (supplemental Note on the Blood Web site).

To identify individuals with CH, we performed error-corrected targeted sequencing of blood DNA for 56 genes implicated in CH using a custom set of RNA baits (Twist Bioscience design ID TE-99420296; supplemental Table 1). Sequences were mapped to human reference genome GRCh38 and CH somatic driver mutations with a variant allele fraction (VAF) of 1% to 40% were identified using Shearwater (SNV)<sup>17</sup> and Mutect2 (Indels).<sup>18</sup> With median sequencing coverage of 2000 $\times$ , we detected 266 CH driver mutations within 22 genes (supplemental Tables 2 and 3), with 188/568 (33%) patients having at least 1 mutation (Figure 1A). *DNMT3A* and *TET2* mutations were most common in all 3 groups, with no significant enrichment for particular genes in any group (Figure 1B).

CH mutations in at least 1 gene were identified in 37 (31%) nonhospitalized, 74 (31%) hospitalized, and 77 (37%) critically ill patients (Figure 1C). There was no significant difference in the prevalence of CH between groups ( $P = .35$ ,  $\chi^2$  test). We next examined CH prevalence by age and found that, although this increased with advancing age in all 3 groups, the groups did not differ significantly when comparing individuals in the same age ranges (Figure 1D). In addition, with most CH carriers harboring 1 or 2 mutations, there were no differences between the 3 groups with regard to the mean number of mutations per patient ( $P = .80$ , 1-way analysis of variance test; Figure 1E) or the average clone size as measured by VAF ( $P = .23$ , 1-way analysis of variance test; Figure 1F). To investigate whether mutation-bearing myeloid cells were preferentially mobilized or expanded during the acute clinical course of COVID-19, we studied available paired samples, taken 8 days apart, from 54 critically ill patients. CH was identified in 16 (32%). Comparison of VAFs between day 1 and day 9 samples did not differ significantly ( $P = .27$ , pairwise  $t$  test) (Figure 1G), indicating that there was no preferential expansion of myeloid progeny arising from the CH clone.

To take account for covariates previously implicated in COVID-19 disease severity including age, sex, ethnicity, diabetes, chronic obstructive pulmonary disease/asthma, CVD, cancer/neoplasm, immunodeficiencies, and smoking status, we applied a multivariable proportional odds model to retest for a possible association between COVID-19 disease severity and CH (supplemental Table 4). We found that male sex (adjusted odds

ratio [OR] = 2.84; 95% confidence interval [CI], 1.91-4.24;  $P < .01$ ), diabetes (adjusted OR = 1.56; 95% CI, 1.05-2.44;  $P = .044$ ), cardiovascular disease (adjusted OR = 1.64; 95% CI, 1.01-2.44;  $P = .046$ ), and immunodeficiency (adjusted OR = 2.10; 95% CI, 1.11-4.07;  $P = .024$ ) were all significantly associated with COVID-19 hospitalization and ICU admission, consistent with previous findings.<sup>5</sup> However, even after adjusting for these factors, the presence of CH was not associated with an increased risk of severe COVID-19 (OR = 1.24; 95% CI, 0.82-1.89;  $P = .31$ ; Figure 1H). Similarly, neither were the number of mutations per patient (adjusted OR = 1.09; 95% CI, 0.88-1.36;  $P = .43$ ) nor the CH clone size (adjusted OR = 1.63; 95% CI, 0.05-53.88;  $P = .78$ ) (Figure 1H).

Given the reported links between *TET2* and *DNMT3A* mutations and hyperinflammation or response to infection,<sup>15,16,19</sup> these 2 gene mutations were interrogated individually for a possible association with COVID-19 severity using a proportional odds model. Mutations in *TET2* and *DNMT3A* were also not associated with COVID-19 disease severity (Figure 1H). Finally, given that large clone size is more strongly associated with CVD,<sup>10</sup> we analyzed the risk associated with large CH clones (VAF  $\geq 5\%$ ), and again found no association with COVID-19 disease severity (OR = 1.29; 95% CI, 0.69-2.42;  $P = .42$ ; Figure 1H). Similarly, we found no association between CH with VAF  $\geq 10\%$  and COVID-19 disease severity (OR = 1.06; 95% CI, 0.50-2.28;  $P = .88$ ).

In summary, our study found no evidence that CH is associated with COVID-19 disease severity, even after adjusting for covariates known to affect the risk of severe disease. Previous studies examining the association between COVID-19 disease severity and clonal hematopoiesis CH have produced conflicting results. Three smaller studies concluded that CH is not associated with COVID-19 disease severity.<sup>20-22</sup> However, conclusions were less definitive because of comparisons only to historical non-COVID-19 controls,<sup>20</sup> small sample size/power to detect potentially relevant associations,<sup>21</sup> different sequencing platforms used for cases and controls,<sup>20</sup> and/or limited availability of additional comorbidity/risk factor data.<sup>21</sup> A larger study ( $n = 413$ ) examined the relationship among patients with solid cancers at various stages during treatment (MSK-IMPACT cohort), and reported that nonputative driver clonal hematopoiesis mutations were associated with COVID-19 disease severity.<sup>23</sup> This finding may have reflected the impact of prior cancer treatment on patients with reduced hematopoietic stem cell numbers/reserve. The same study used an independent noncancer cohort ( $n = 112$ ) for validation, and found no significant associations within this smaller cohort, although fixed-effects meta-analysis of the combined 2 cohorts remained positive, likely driven by the larger MSC-IMPACT cohort.<sup>23</sup> Also, a recent study reported an association between mosaic chromosomal alterations, a distinct form of CH, and risk of COVID-19 hospitalization.<sup>24</sup> Our current study

**Figure 1. Investigation of the impact of clonal hematopoiesis on COVID-19 disease severity.** (A) Proportion of patients carrying at least 1 driver CH mutation in all 3 COVID-19 patient cohorts combined. (B) Distribution of CH driver mutations by gene in nonhospitalized, hospitalized, and ICU patients. (C) Proportion of patients carrying at least 1 driver mutation in nonhospitalized, hospitalized, and ICU COVID-19 patients.  $P$  value was calculated using  $\chi^2$  test. (D) Proportion of patients at least 1 CH driver mutation in nonhospitalized, hospitalized, and ICU COVID-19 patients across different age groups. (E) Number of CH driver mutations per patient in nonhospitalized, hospitalized, and ICU COVID-19 patients. (F) VAF distribution of CH driver mutations in nonhospitalized, hospitalized, and ICU COVID-19 patients.  $P$  value is calculated using 1-way analysis of variance. (G) VAF distribution of CH driver mutations in nonhospitalized, hospitalized, and ICU COVID-19 patients.  $P$  value is calculated using  $t$  test. (H) Multivariate proportional odds model shows that the presence of CH, number of mutations per patient, VAF, CH mutation of  $\geq 5\%$  VAF, CH mutation of  $\geq 10\%$  VAF, *DNMT3A* mutation, and *TET2* mutation are not associated with an increased risk of COVID-19 hospitalization and ICU admission. Age, sex, ethnicity, diabetes, chronic obstructive pulmonary disease/asthma, CVD, cancer/neoplasm, immunodeficiency, and smoking status were adjusted for.

attempted to mitigate these prior limitations by studying the largest number of patients to date, directly comparing relevant patient groups (asymptomatic/mild, hospitalized, critically ill), incorporating covariates from well-characterized additional risk factors, and performing sequencing and mutation calling using the same platforms. Overall, we found no evidence of an association between CH and COVID-19 severity, resolving much of the uncertainty surrounding this question. Although it is never possible to rule out an association with absolute certainty, our study indicates that the clinical impact of any theoretical association is unlikely to be substantial (Figure 1H).

## Acknowledgments

The authors are grateful to all physicians, nurses, and health care workers treating COVID-19 patients under very challenging circumstances and still being able to help with providing data for this paper. The authors are also very grateful to the 2648 frontline National Health Service clinical and research staff and volunteer medical students who collected these data in challenging circumstances. The authors thank the generosity of the participants and their families for their individual contributions in these difficult times. The authors acknowledge Lucy Lorris for extracting clinical information for ISARIC4C patients; Tovah Klein for providing samples and clinical information for NorthShore Hospital patients; Mary Magliocco, Michael Stack, Elana Shaw, Jason Barnett, Smilee Samuel, and Sandhya Xirasagar for maintaining LabKey database for NIAID Immune Response to COVID patients; Charla Andrews, Britta Flach, Emily Coates, Obripong Ainoa-Awua, Maria Burgos Florez, Lasonji Holman, and Renunda Hicks for providing samples and clinical information for VRC 200 patients; and Elizabeth Laidlaw and Silvia Lage for providing samples and clinical information for CALYPSO patients. The authors thank Xiaolin Wu, Arati Raziuddin at the National Cancer Institute (NCI) Frederick Sequencing Facility, Yuesheng Li, Yan Luo, and Patrick Burr at the National Heart, Lung and Blood Institute (NHLBI) DNA Sequencing and Genomics Core for preparing sequencing library and sequencing. The authors are grateful for the assistance provided by Helen Matthews, Sarah Weber, James Chappell, and Wilna Oosthuizen and thank Shu Huang at Cavendish Laboratory, University of Cambridge, for discussion on data processing. The authors also acknowledge the support of Jeremy J. Farrar and Nohoko Shindo.

This work used the computational resources of the National Institutes of Health (NIH) High Performance Computing Biowulf cluster and Wellcome-MRC Cambridge Stem Cell Institute High Performance Computing cluster. The NorthShore University Health System COVID-19 Convalescent Plasma collection program was initially supported by grants to the NorthShore Foundation, including a donation from the Rice Foundation, and support from NorthShore University HealthSystem Research Institute. Subsequently, NorthShore received funding from the Department of Defense (W911QY2090012-D.S.). The ISARIC4C is supported by grants from the NIHR (award CO-CIN-01), MRC (grant MC\_PC\_19059), NIHR Imperial Biomedical Research Centre (grant P45058), HPRU in Respiratory Infections at Imperial College London, and NIHR HPRU in Emerging and Zoonotic Infections at the University of Liverpool, in partnership with Public Health England (NIHR award 200907), Wellcome Trust, Department for International Development (215091/Z/18/Z), Bill & Melinda Gates Foundation (OPP1209135), Liverpool Experimental Cancer Medicine Centre (grant C18616/A25153), NIHR Biomedical Research Centre at Imperial College London (IS-BRC-1215-20013), and EU Platform for European Preparedness Against (Re-) Emerging Epidemics (PREPARE, FP7 project 602525).

This research was funded in whole, or in part, by the Wellcome Trust 203151/Z/16/Z and the UKRI Medical Research Council [MC\_PC\_17230]. For the purpose of open access, the author has applied a CC BY public copyright license to any Author Accepted Manuscript version arising from this submission. This work was supported by a European Hematology Association COVID-19 in Hematology Research Grant 2020 and a National Institutes of Health Intramural Targeted Anti-COVID-19 (ITAC) Award. G.S.V. is funded by a Cancer Research UK Senior Cancer Research Fellowship (C22324/A23015). The work was also supported in part by the Intramural Research Program of

the National Heart, Lung, and Blood Institute and National Institute of Allergy and Infectious Diseases.

## Authorship

Contribution: G.S.V., C.E.D., and Z.M. conceived the study; G.S.V., C.E.D., J.K.B., Z.M., and Y.Z. designed and supervised the study; Y.Z., R.S., C.O.W., M.G., M.A.F., and P.M.Q. performed and advised on the bioinformatic and statistical analysis; S.N.R., S.Y., T.-H.S., A.D., W.D., S.A., W.L., and M.C. prepared library and sequenced samples; A.L.G., J.P., J.H., E.J., A.C., L.A., F.R.-L., B.T., A.F., I.J.G., L.N., L.S., M.R.G., A.L., I.S., T.J.G., A.B., P.B., L.I., C.L.D., Y.Z., K.D., H.C.S., L.D.N., P.J.M.O., and M.G.S. provided samples and clinical information; P.J.M.O., M.G.S., and J.K.B. set up the ISARIC4C cohort; and G.S.V., C.E.D., and Y.Z. wrote the manuscript with input from all coauthors.

Conflict-of-interest disclosure: G.S.V. is a consultant with STRM.BIO and receives a research grant from AstraZeneca. During 2021, T.J.G. was a paid consultant for Frenwal/Fresenius Kabi and became a full-time employee of the company in March 2022. The remaining authors declare no competing financial interests.

A complete list of the ISARIC4C Investigators appears in supplemental Appendix A.

ORCID profiles: Y.Z., [0000-0002-3538-621X](https://orcid.org/0000-0002-3538-621X); S.N.R., [0000-0002-4563-1899](https://orcid.org/0000-0002-4563-1899); M.G., [0000-0003-4376-795X](https://orcid.org/0000-0003-4376-795X); M.A.F., [0000-0001-7794-610X](https://orcid.org/0000-0001-7794-610X); P.M.Q., [0000-0002-7793-6291](https://orcid.org/0000-0002-7793-6291); T.-H.S., [0000-0002-9619-8554](https://orcid.org/0000-0002-9619-8554); J.P., [0000-0001-5706-816X](https://orcid.org/0000-0001-5706-816X); A.C., [0000-0001-7209-6257](https://orcid.org/0000-0001-7209-6257); F.R.-L., [0000-0001-7858-7866](https://orcid.org/0000-0001-7858-7866); M.R.G., [0000-0002-3743-5281](https://orcid.org/0000-0002-3743-5281); A.B., [0000-0002-6757-6173](https://orcid.org/0000-0002-6757-6173); P.B., [0000-0001-7289-8823](https://orcid.org/0000-0001-7289-8823); L.I., [0000-0002-2075-8391](https://orcid.org/0000-0002-2075-8391); K.D., [0000-0002-3432-3137](https://orcid.org/0000-0002-3432-3137); L.D.N., [0000-0002-8335-0262](https://orcid.org/0000-0002-8335-0262); P.J.M.O., [0000-0002-7220-2555](https://orcid.org/0000-0002-7220-2555); M.G.S., [0000-0001-9700-0418](https://orcid.org/0000-0001-9700-0418); Z.M., [0000-0003-0443-7878](https://orcid.org/0000-0003-0443-7878); K.B., [0000-0001-5258-793X](https://orcid.org/0000-0001-5258-793X); C.E.D., [0000-0002-7645-838X](https://orcid.org/0000-0002-7645-838X); G.S.V., [0000-0003-4337-8022](https://orcid.org/0000-0003-4337-8022).

Correspondence: Cynthia E. Dunbar, Translational Stem Cell Biology Branch, National Heart, Lung and Blood Institute, National Institutes of Health, Room 5E-3332, Bldg 10-CRC, 9000 Rockville Pike, Bethesda, MD 20892; email: [dunbarc@nhlbi.nih.gov](mailto:dunbarc@nhlbi.nih.gov); and George S. Vassiliou, Haematological Medicine, Wellcome-MRC Cambridge Stem Cell Institute, University of Cambridge, Puddicombe Way, Cambridge, CB2 0AW, UK; email: [gsv20@cam.ac.uk](mailto:gsv20@cam.ac.uk).

## Footnotes

Submitted 23 March 2022; accepted 28 June 2022; prepublished online on *Blood* First Edition 15 July 2022.

\*Z.M., K.B., C.E.D., and G.S.V. contributed equally to this work.

For access to the original sequencing data, please contact: [cmdl\\_ngs@medschl.cam.ac.uk](mailto:cmdl_ngs@medschl.cam.ac.uk).

The online version of this article contains a data supplement.

## REFERENCES

- Chen N, Zhou M, Dong X, et al. Epidemiological and clinical characteristics of 99 cases of 2019 novel coronavirus pneumonia in Wuhan, China: a descriptive study. *Lancet*. 2020;395(10223):507-513.
- Huang C, Wang Y, Li X, et al. Clinical features of patients infected with 2019 novel coronavirus in Wuhan, China. *Lancet*. 2020;395(10223):497-506.
- Grasselli G, Zangrillo A, Zanella A, et al; COVID-19 Lombardy ICU Network. Baseline characteristics and outcomes of 1591 patients infected with sars-cov-2 admitted to ICUs of the Lombardy region, Italy. *JAMA*. 2020;323(16):1574-1581.
- Williamson EJ, Walker AJ, Bhaskaran K, et al. Factors associated with COVID-19-related death using OpenSAFELY. *Nature*. 2020;584(7821):430-436.

5. COVID-19 Host Genetics Initiative. Mapping the human genetic architecture of COVID-19. *Nature*. 2021;600(7889):472-477.
6. Guan WJ, Ni ZY, Hu Y, et al; China Medical Treatment Expert Group for Covid-19. Clinical characteristics of coronavirus disease 2019 in China. *N Engl J Med*. 2020;382(18):1708-1720.
7. Jaiswal S, Fontanillas P, Flannick J, et al. Age-related clonal hematopoiesis associated with adverse outcomes. *N Engl J Med*. 2014;371(26):2488-2498.
8. Genovese G, Kähler AK, Handsaker RE, et al. Clonal hematopoiesis and blood-cancer risk inferred from blood DNA sequence. *N Engl J Med*. 2014;371(26):2477-2487.
9. Fabre M, Guilherme de Almeida J, Fiorilo E, et al. The longitudinal dynamics and natural history of clonal haematopoiesis. *Nature*. 2022; 606(7913):335-342.
10. Jaiswal S, Natarajan P, Silver AJ, et al. Clonal hematopoiesis and risk of atherosclerotic cardiovascular disease. *N Engl J Med*. 2017;377(2):111-121.
11. Libby P, Sidlow R, Lin AE, et al. Clonal hematopoiesis: crossroads of aging, cardiovascular disease, and cancer: JACC review topic of the week. *J Am Coll Cardiol*. 2019;74(4):567-577.
12. Cook EK, Izukawa T, Young S, et al. Comorbid and inflammatory characteristics of genetic subtypes of clonal hematopoiesis. *Blood Adv*. 2019;3(16):2482-2486.
13. Bick AG, Pirruccello JP, Griffin GK, et al. Genetic interleukin 6 signaling deficiency attenuates cardiovascular risk in clonal hematopoiesis. *Circulation*. 2020;141(2):124-131.
14. Meisel M, Hinterleitner R, Pacis A, et al. Microbial signals drive pre-leukaemic myeloproliferation in a Tet2-deficient host. *Nature*. 2018;557(7706): 580-584.
15. Zhang Q, Zhao K, Shen Q, et al. Tet2 is required to resolve inflammation by recruiting Hdac2 to specifically repress IL-6. *Nature*. 2015;525(7569): 389-393.
16. Sano S, Oshima K, Wang Y, et al. Tet2-mediated clonal hematopoiesis accelerates heart failure through a mechanism involving the IL-1 $\beta$ /NLRP3 inflammasome. *J Am Coll Cardiol*. 2018;71(8):875-886.
17. Gerstung M, Papaemmanuil E, Campbell PJ. Subclonal variant calling with multiple samples and prior knowledge. *Bioinformatics*. 2014;30(9): 1198-1204.
18. MuTect2-GATK. Accessed 5 July 2021. Available at: <https://gatk.broadinstitute.org/hc/en-us/articles/360037593851-Mutect2>
19. Hormaechea-Agulla D, Matatall KA, Le DT, et al. Chronic infection drives Dnmt3a-loss-of-function clonal hematopoiesis via IFN $\gamma$  signaling. *Cell Stem Cell*. 2021;28(8):1428-1442.e6.
20. Duployez N, Demonchy J, Berthon C, et al. Clinico-biological features and clonal hematopoiesis in patients with severe COVID-19. *Cancers (Basel)*. 2020;12(7):1992.
21. Hameister E, Stolz SM, Fuhrer Y, et al. Clonal hematopoiesis in hospitalized elderly patients with COVID-19. *HemaSphere*. 2020;4(4):e453.
22. Petzer V, Schwendinger S, Haschka D, et al. Clonal hematopoiesis in patients with Covid-19 is stable and not linked to an aggravated clinical course. *Am J Hematol*. 2021;96(9):E331-E333.
23. Bolton KL, Koh Y, Foote MB, et al. Clonal hematopoiesis is associated with risk of severe Covid-19. *Nat Commun*. 2021;12(1):5975.
24. Natarajan P, Zekavat S, Lin SH, et al. Hematopoietic mosaic chromosomal alterations and risk for infection among 767,891 individuals without blood cancer. *Nat Med*. 2021;27(6):1012-1024.

<https://doi.org/10.1182/blood.2022015721>

© 2022 by The American Society of Hematology. Licensed under Creative Commons Attribution-NonCommercial-NoDerivatives 4.0 International (CC BY-NC-ND 4.0), permitting only noncommercial, nonderivative use with attribution. All other rights reserved.