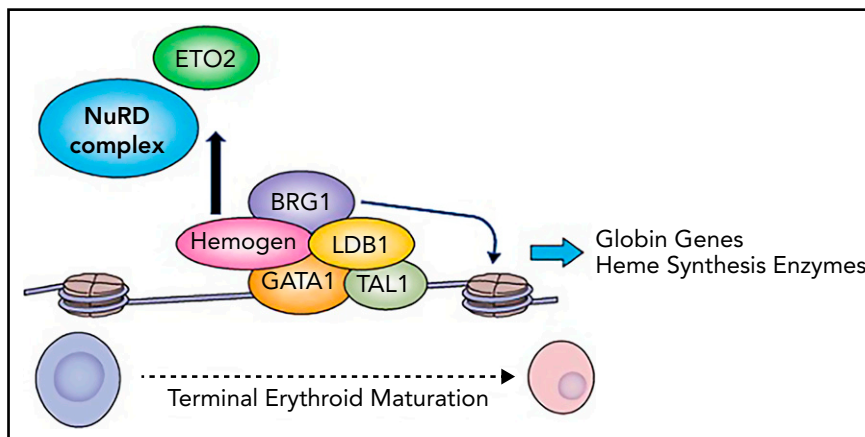


Steiner L. Helping GATA1 make complex decisions. *Blood*. 2022;139(24):3457-3459.

Pages 3457-3458: In the second paragraph, the figure, and the figure legend, "LBD1" should be "LDB1." The corrected figure and legend are shown below:



Hemogen regulates GATA1 complex composition. Hemogen interacts with GATA1, recruiting the SWI/SNF chromatin remodeler BRG1 to form the activating LDB1 complex and to exclude ETO2 and the NuRD complex, facilitating high-level erythroid gene expression during terminal erythroid maturation. Professional illustration by Patrick Lane, ScEYence Studios.

The errors have been corrected in the online version of the article.

DOI 10.1182/blood.2022017587

© 2022 by The American Society of Hematology

Freeman SD, Valk P. Transplant in older adults with AML: genomic wheat and chaff. *Blood*. 2022;139(24):3459-3461.

Page 3459: In the second sentence of the paragraph that begins with "Allogeneic transplantation," the phrase "Without a first remission" should read "Without a transplant." In the last sentence of the paragraph that begins with "A clinical diagnosis," the phrase "multiple primary neoplasms" should read "myeloproliferative neoplasm." The errors have been corrected in the online version of the article.

DOI 10.1182/blood.2022017627

© 2022 by the American Society of Hematology