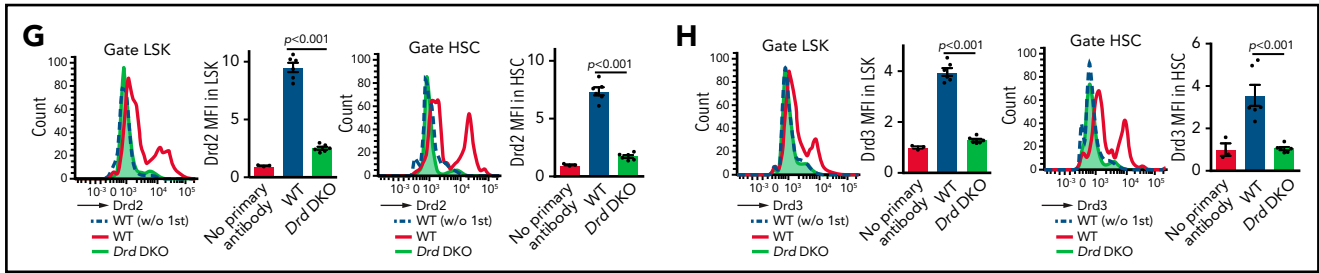


Liu Y, Chen Q, Jeong H-W, et al. Dopamine signaling regulates hematopoietic stem and progenitor cell function. *Blood*. 2021;138(21):2051-2065.

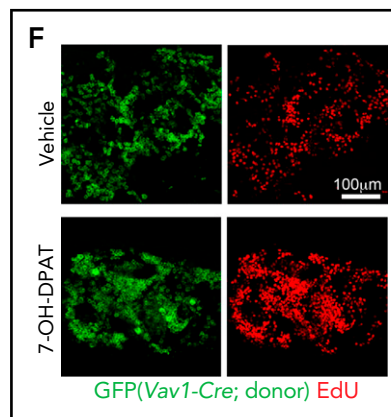
In the graphs labeled "Gate LSK" and "Gate HSC" in Figure 1G-H on page 2052, the red and green curves are reversed. The red curve and pink shaded area should be green (*Drd* DKO), and the green curve should be red (WT). The corrected Figure 1G-H is shown below.



In the first sentence of the first full paragraph on page 2055, "hematopoietic, but not BM, stromal cells" should read "hematopoietic but not BM stromal cells."

In the last line of the legend to Figure 4 on page 2058, "12Gy5D" should read "12Gy4D."

In Figure 5F on page 2059, the green label "EdU" should be red. The corrected Figure 5F is shown below.



The publisher apologizes for these errors, which have been corrected in the online version of the article.

DOI 10.1182/blood.2022016401

© 2022 by The American Society of Hematology