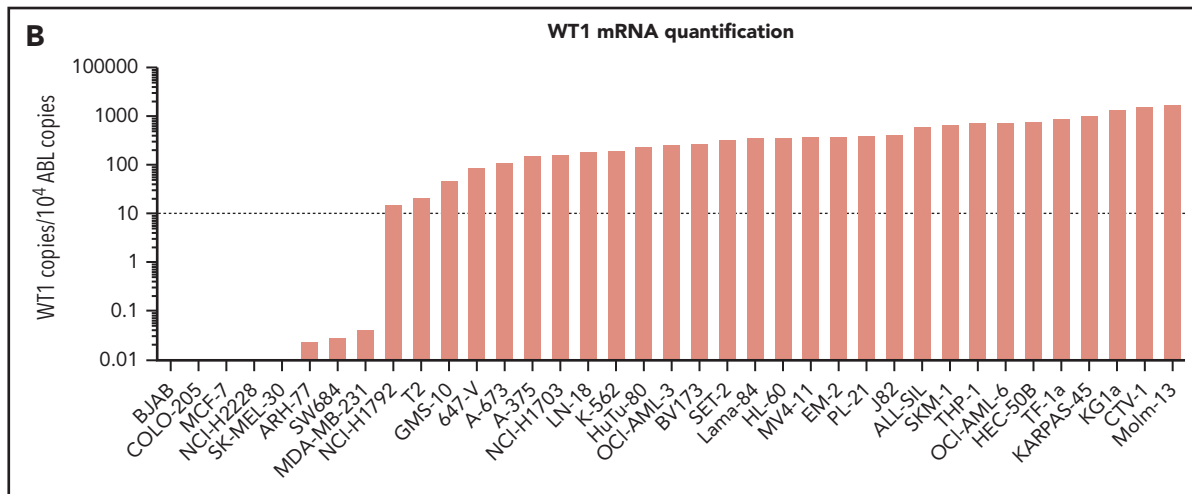
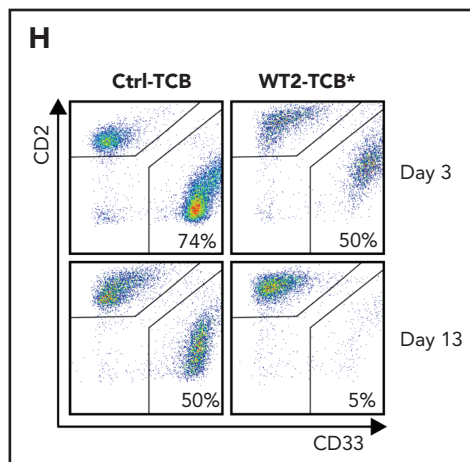


Augsberger C, Hänel G, Xu W, et al. Targeting intracellular WT1 in AML with a novel RMF-peptide-MHC-specific T-cell bispecific antibody. *Blood*. 2021;138(25):2655-2669.

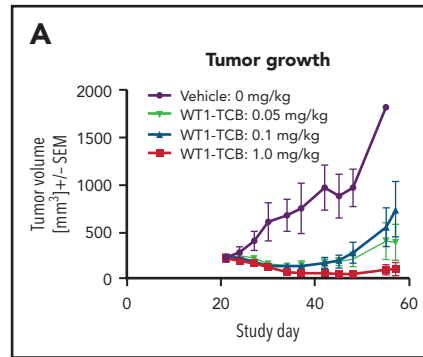
In Figure 1B on page 2658, the x-axis label "KG1?" should be "KG1a." The corrected Figure 1B is shown below.



During the publication process, errors were introduced into Figure 4H on page 2662 and Figure 7A on page 2665. The publisher apologizes for the errors. In Figure 4H, "WT2-TCB*" should read "WT1-TCB*." The corrected Figure 4H is shown below.



In Figure 7A, the second label "WT1-TCB: 0.1 mg/kg" (red line) should read "WT1-TCB: 1.0 mg/kg."



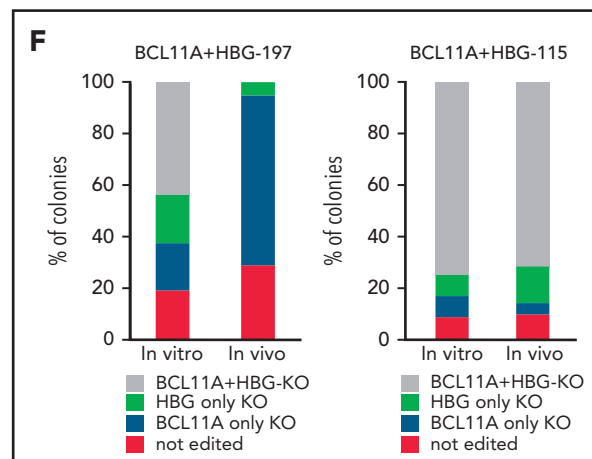
The errors have been corrected in the online version of the article.

DOI 10.1182/blood.2022015672

© 2022 by The American Society of Hematology

Psatha N, Georgakopoulou A, Li C, et al. Enhanced HbF reactivation by multiplex mutagenesis of thalassemic CD34⁺ cells in vitro and in vivo. *Blood*. 2021;138(17):1540-1553.

In the key of Figure 4F on page 1546, the gray label should represent "BCL11A+HBG-KO," the green label should represent "HBG only KO," the blue label should represent "BCL11A only KO," and the red label should represent "not edited." The corrected Figure 4F is shown below. The publisher apologizes for the errors, which have been corrected in the online version of the article.



DOI 10.1182/blood.2022015968

© 2022 by The American Society of Hematology