

[†]P.C. and S.N. participated equally in this work.

Data will be shared on demand by e-mails to the corresponding author.

The online version of this article contains a data supplement.

REFERENCES

- Ljungman P, de la Camara R, Mikulska M, et al. COVID-19 and stem cell transplantation; results from an EBMT and GETH multicenter prospective survey. *Leukemia*. 2021;35(10):2885-2894.
- Baden LR, El Sahly HM, Essink B, et al; COVE Study Group. Efficacy and safety of the mRNA-1273 SARS-CoV-2 vaccine. *N Engl J Med*. 2021;384(5):403-416.
- Polack FP, Thomas SJ, Kitchin N, et al; C4591001 Clinical Trial Group. Safety and efficacy of the BNT162b2 mRNA Covid-19 vaccine. *N Engl J Med*. 2020;383(27):2603-2615.
- Kamar N, Abravanel F, Marion O, Couat C, Izopet J, Del Bello A. Three doses of an mRNA Covid-19 vaccine in solid-organ transplant recipients. *N Engl J Med*. 2021;385(7):661-662.
- Boyersky BJ, Werbel WA, Avery RK, et al. Antibody response to 2-dose SARS-CoV-2 mRNA vaccine series in solid organ transplant recipients. *JAMA*. 2021;325(21):2204-2206.
- Rozen-Zvi B, Yahav D, Agur T, et al. Antibody response to SARS-CoV-2 mRNA vaccine among kidney transplant recipients: a prospective cohort study. *Clin Microbiol Infect*. 2021;27(8):1173.e1-1173.e4.
- Maneikis K, Šablauskas K, Ringelevičiūtė U, et al. Immunogenicity of the BNT162b2 COVID-19 mRNA vaccine and early clinical outcomes in patients with haematological malignancies in Lithuania: a national prospective cohort study. *Lancet Haematol*. 2021;8(8):e583-e592.
- Herishanu Y, Avivi I, Aharon A, et al. Efficacy of the BNT162b2 mRNA COVID-19 vaccine in patients with chronic lymphocytic leukemia. *Blood*. 2021;137(23):3165-3173.
- Del Bello AD, Abravanel F, Marion O, et al. Efficiency of a boost with a third dose of anti-SARS-CoV-2 messenger RNA-based vaccines in solid organ transplant recipients. *Am J Transplant*. 2021, Jul 31:10.1111/ajt.16775.
- Hall VG, Ferreira VH, Ku T, et al. Randomized trial of a third dose of mRNA-1273 vaccine in transplant recipients. *N Engl J Med*. 2021; 385(13):1244-1246.
- Benotmane I, Gautier G, Perrin P, et al. Antibody response after a third dose of the mRNA-1273 SARS-CoV-2 vaccine in kidney transplant recipients with minimal serologic response to 2 doses. *JAMA*. 2021;326(11): 1063-1065.
- French Government. Precisions sur la vaccination COVID-19 : modalités d'administration des rappels et vaccination des personnes immunodéprimées et de leurs proches. https://solidarites-sante.gouv.fr/IMG/pdf/dgs_urgent_52_precisions_sur_la_vaccination_imd.pdf. Accessed 10 September 2021.
- Redjoul R, Le Bouter A, Beckerich F, Fourati S, Maury S. Antibody response after second BNT162b2 dose in allogeneic HSCT recipients. *Lancet*. 2021;398(10297):298-299.
- Redjoul R, Le Bouter A, Parinet V, Fourati S, Maury S. Antibody response after third BNT162b2 dose in recipients of allogeneic HSCT. *Lancet Haematol*. 2021;8(10):e681-e683.
- Baudoux E, Bay JO, Beguin Y, et al. Recommandations de la SFGM-TC Stratégie de vaccination pour les patients recevant une allogreffe de cellules souches hématopoïétiques. 2021. Accessed 10 September 2021.
- Kristiansen PA, Page M, Bernasconi V, et al. WHO International Standard for anti-SARS-CoV-2 immunoglobulin. *Lancet*. 2021; 397(10282):1347-1348.
- Gilbert PB, Montefiori DC, McDermott A, et al. Immune correlates analysis of the mRNA-1273 COVID-19 vaccine efficacy trial [published online ahead of print 23 November 2021]. *Science*. 2021:eab3435.
- Feng S, Phillips DJ, White T, et al. Correlates of protection against symptomatic and asymptomatic SARS-CoV-2 infection. *Nat. Med*. 2021; 27(11):2032-2040.
- Corbett KS, Nason MC, Flach B, et al. Immune correlates of protection by mRNA-1273 vaccine against SARS-CoV-2 in nonhuman primates. *Science*. 2021;373(6561):eabj0299.

DOI 10.1182/blood.2021014232

© 2022 by The American Society of Hematology

TO THE EDITOR:

Severe impairment of T-cell responses to BNT162b2 immunization in patients with multiple myeloma

Julius C. Enßle,^{1,4,*} Julia Campe,^{2,5,6,*} Amelie Schwenger,^{2,5,6} Eliza Wiercinska,^{7,8} Helen Hellstern,^{7,8} Ralf Dürrwald,⁹ Michael A. Rieger,^{1,4} Sebastian Wolf,^{1,4} Olivier Ballo,¹ Björn Steffen,¹ Hubert Serve,^{1,4} Halvard Bonig,^{7,8} Holger F. Rabenau,¹⁰ Marek Widera,¹⁰ Sandra Ciesek,^{10,11} Ivana von Metzler,^{1,4,*} and Evelyn Ullrich^{2-6,*}

¹Department of Medicine, Hematology/Oncology, University Hospital Frankfurt, Goethe University, Frankfurt am Main, Germany; ²Frankfurt Cancer Institute (FCI), Frankfurt am Main, Germany; ³German Cancer Consortium (DKTK), Heidelberg, Germany; ⁴German Cancer Research Center (DKFZ), Heidelberg, Germany; ⁵Experimental Immunology, Department for Children and Adolescents Medicine, University Hospital Frankfurt, Goethe University, Frankfurt am Main, Germany; ⁶Division of Pediatric Stem Cell Transplantation and Immunology, Department for Children and Adolescents Medicine, University Hospital Frankfurt, Goethe University, Frankfurt am Main, Germany; ⁷Institute for Transfusion Medicine and Immunohematology, Goethe University, Frankfurt am Main, Germany; ⁸German Red Cross Blood Service BaWüHe, Frankfurt am Main, Germany; ⁹Robert Koch-Institut, Berlin, Germany; ¹⁰Institute for Medical Virology, University Hospital Frankfurt, Goethe University, Frankfurt am Main, Germany; and ¹¹German Centre for Infection Research, External partner site, Frankfurt am Main, Germany

Multiple myeloma (MM) comprises a plasma-cell neoplasia associated with severe suppression of the cellular immune system and reduced immunoglobulin production.^{1,2} Owing to the disease and continuous therapies, most patients with MM lack normal plasma and B cells; hence, they are susceptible to severe

infections. In line with that, the first US study on coronavirus disease 2019 (COVID-19) in MM patients reported mortality rates of almost 20%.³ As soon as the first vaccines against severe acute respiratory syndrome coronavirus 2 (SARS-CoV-2) became available, cancer patients were immunized with high priority.^{4,6}

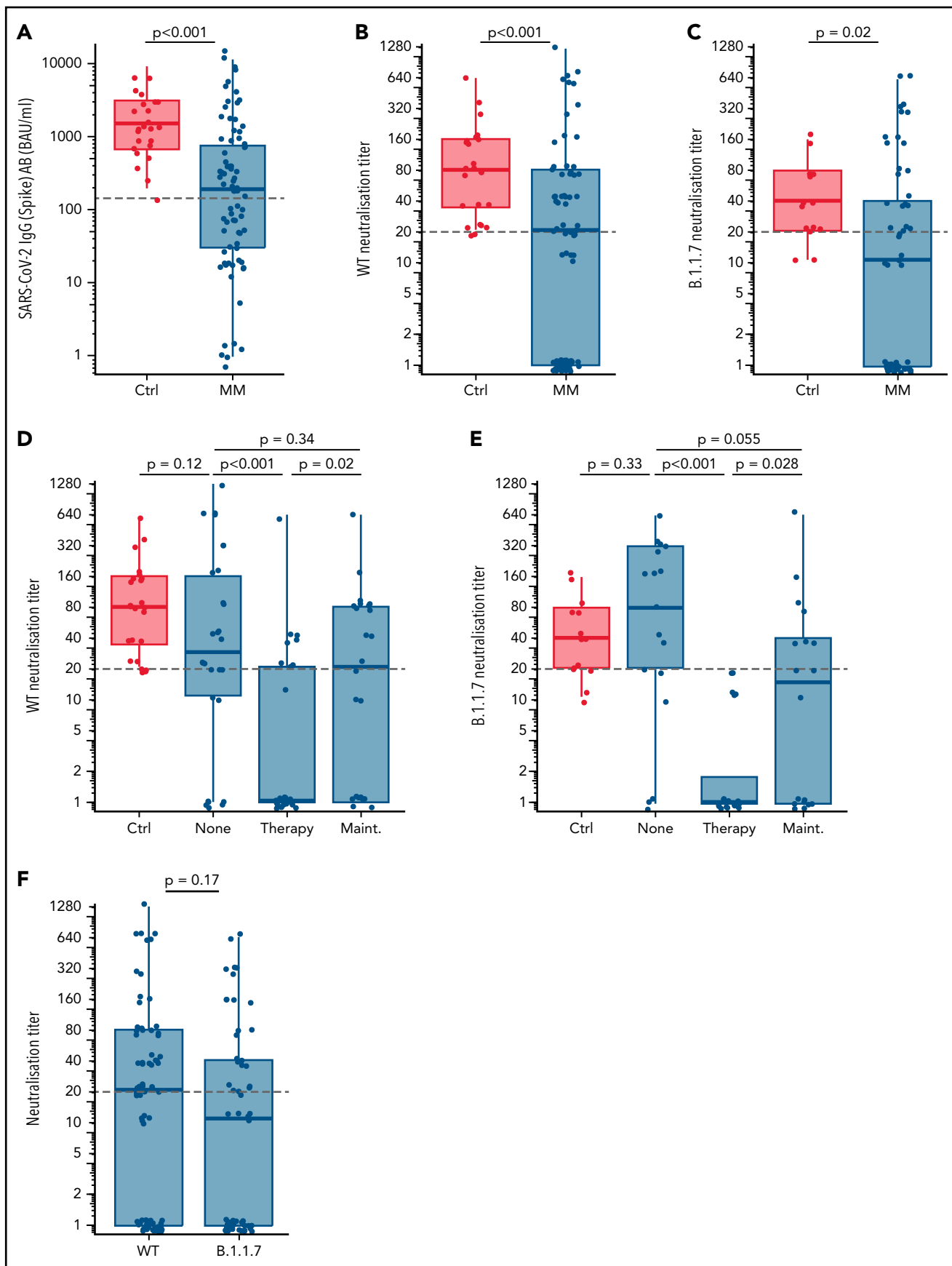


Figure 1. Serological response after two doses of mRNA SARS-CoV-2 vaccination. (A) SARS-CoV-2 (Spike) antibody (AB) levels stratified for healthy controls (Ctrl) vs patients with multiple myeloma (MM) (≥ 8.52 -11 360 BAU/mL considered as positive). The gray dashed line denotes the spike IgG cutoff of

However, diminished humoral responses to different vaccines in patients with B-cell malignancies have been reported.^{7,8} Regarding the exceptional collective of patients with MM, a highly variable but impaired serological response to SARS-CoV-2 vaccination has recently been observed.⁹⁻¹⁴ Even lower serological immunization success rates were associated with concomitant therapy.¹²⁻¹⁴ Although the immune response after SARS-CoV-2 vaccination may also be mediated by T-cell-dependent mechanisms, there are no detailed data on the T-cell immune response after patients with MM had been vaccinated.¹⁵ Therefore, we have initiated a single-center observational study monitoring clinical features, immune cell status, serological and T-cell response after SARS-CoV-2 immunization.

Here, we report on the SARS-CoV-2-specific T-cell response following 2 doses of the BNT162b2 vaccine in a clinically well-defined cohort of patients with MM and address its correlation with serological response as well as immunological parameters before and after vaccination and in the context with the current therapy. Overall, 77 patients with MM and 24 controls were included in this interim analysis (supplemental Tables 1 and 2, available on the *Blood* Web site). The timespan between priming and second vaccination ranged from around 21 days (35 patients and 12 controls) to around 42 days (42 patients and 12 controls). Analysis of SARS-CoV-2 spike-binding immunoglobulin G (IgG) antibody levels after the second dose (median time, 21 days) revealed relatively lower median IgG levels (191.4 vs 1520.3 BAU/mL, $P < .001$; Figure 1A) and neutralization titers (NTs) against the SARS-CoV-2 wild-type (WT) strain (1:20 vs 1:80, $P = .006$; Figure 1B) and the α -variant B.1.1.7 (B.1.1.7) (1:10 vs 1:40, $P < .001$; Figure 1C) of patients with MM compared with healthy controls. Generating NTs against both strains was significantly impaired by concomitant MM therapy, but not by maintenance (Figure 1D,E). IgG and NT levels correlated well, and despite a trend toward lower NTs for B.1.1.7, no significant differences for WT and B.1.1.7 NTs could be observed (Figure 1F). Because NTs $\geq 1:20$ are considered protective against SARS-CoV-2, patients with MM with NTs $\geq 1:20$ were defined as serological responders, whereas patients with NTs $< 1:20$ were defined as serological nonresponders.^{16,17} By receiver-operator curve (ROC) analysis, we identified IgG levels ≥ 143.5 BAU/mL to correspond with WT NTs of $\geq 1:20$. Nonresponders displayed older age (70 vs 64 years, $P = .028$) and frequently received MM therapy (50.5% vs 19.5%, $P = .011$; supplemental Tables 1 and 5). Patients receiving lenalidomide maintenance or immunomodulatory drug-based therapy trended toward higher response rates without statistical significance because of low sample size or multidrug combinatorial treatment.

Further, T-cell response is induced by BNT162b2 and natural SARS-CoV-2 infection and plays a central role in shielding infection.¹⁸ However, it has been reported that SARS-CoV-2-specific T-cell responses were disturbed in cancer patients.¹⁹ Therefore, emphasis on T-cell responses in B-cell-deficient patients after vaccination is essential.

First, we analyzed immune cell subsets of MM patients' peripheral blood before priming and after second vaccination and their correlation with serological responsiveness. Overall, patients with MM showed decreased CD19⁺ B-cell and CD4⁺ T-cell counts. Interestingly, no differences between serological responders and nonresponders were observed for CD3⁺ and CD8⁺ T-cell subsets and their activation state, whereas we observed a significantly lower median of CD19⁺ B-lymphocytes/ μ L of nonresponders compared with serological responders before and after vaccination. A significantly lower median of CD4⁺ T cells was further observed in serological nonresponders following the second vaccination (supplemental Figure 1).

Additionally, the functional T-cell response after 2 doses of SARS-CoV-2 vaccination was analyzed via enzyme-immunospot assay (ELISpot) in a subcohort of 38 patients with MM and 14 healthy controls (supplemental Table 4). Stimulation was performed with the receptor-binding domain (RBD), the S2-protein (S2), and CEF/CEFT control peptides to quantify spot forming units (SFUs) as parameter of vaccination-induced T-cell responsiveness (Figure 2A-C,E). ROC analysis revealed 55 SFUs per 3×10^5 peripheral blood mononuclear cells (PBMCs) as threshold of a positive T-cell response with reasonable test sensitivity and false-positive rate (specificity $>95\%$ [95.5%] with sensitivity $>50\%$ [53.8%]; Figure 2D). Further, we used this cutoff to define T-cell responders and nonresponders: 44.2% ($n = 23$) of all investigated individuals reached ≥ 55 SFUs per 3×10^5 PBMCs, whereas patients with MM displayed a lower probability of T-cell response compared with healthy controls (34.2% vs 71.4%, $P = .037$; supplemental Table 4). The RBD-specific response was impaired in patients with MM in contrast to healthy controls ($P = .019$; Figure 2A) and the response to S2, which is well conserved between different coronaviruses and less specific for SARS-CoV-2, displayed no significant differences (Figure 2B). Patients with MM showed a comparable response to healthy controls after CEF/CEFT control peptide stimulation (Figure 2C). Bivariate representation of serologic response and T-cell response levels showed that serologic responders of patients with MM often exhibited higher SFU compared with serologic nonresponders. However, some serologic MM nonresponders also achieved SFU counts above the threshold of 55 SFU per 3×10^5 PBMCs (supplemental Figure 2A-F). No positive correlation was observed between T-cell and serologic responses in patients with MM (Figure 2F). In contrast, most healthy controls displayed high T-cell and serologic response values (Figure 2A-C). Here, response to S2 stimulation displayed a certain correlation with serologic response (supplemental Figure 2G). However, no independent factors contributing to impaired T-cell responses in patients with MM could be identified via multivariate logistic regression (Figure 2G).

Concisely, patients with MM displayed a reduced T-cell response after 2 doses of SARS-CoV-2 vaccination compared with healthy controls. Previously, it was shown that CD8⁺ T cells might drive recovery from COVID-19 when

Figure 1 (continued) 143.5 BAU/mL corresponding to a WT neutralization titer $\geq 1:20$ as determined by ROC analysis. WT neutralization titers stratified for healthy controls vs patients with MM (B) and healthy controls in comparison with different therapy status (none, on therapy, and on maintenance) of patients with MM (D). B.1.1.7 neutralization titers stratified for healthy controls vs patients with MM (C) and healthy controls in comparison with different therapy status of patients with MM (E). (F) Comparison of neutralization titers against WT and B.1.1.7. Gray lines in panels B-F denote a neutralization titer $\geq 1:20$ corresponding to adequate protective neutralization capacity. P values are corrected for multiple testing with the Benjamini-Hochberg method.

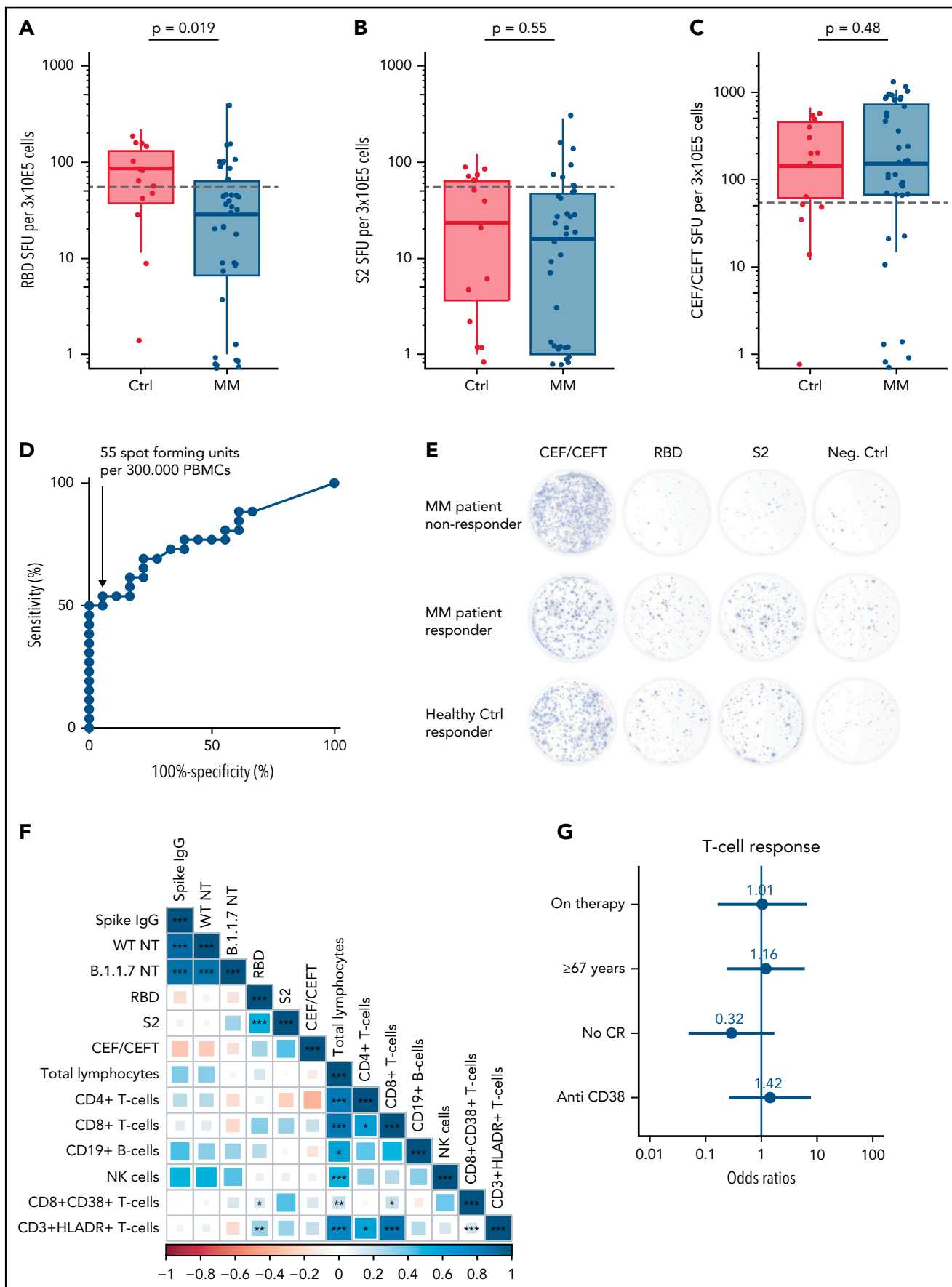


Figure 2.

humoral immunity is compromised.²⁰ To better understand the distribution of SARS-CoV-2-specific T-cell subpopulations, we performed additional fluorescence-activated cell sorting analyses in a subcohort of patients and healthy controls. Here, we observed limited increase in interferon- γ (IFN- γ) and interleukin-2 presenting CD3⁺ T cells in patients with MM compared with healthy controls after SARS-CoV-2-specific peptide stimulation (supplemental Figure 2H). This observation was largely determined by lower frequencies of IFN- γ ⁺ or interleukin-2⁺-secreting CD4⁺ T cells, whereas the frequency of respective CD8⁺ T cells after stimulation did not differ between patients and healthy controls (supplemental Figure 2I-P). These data are in line with our observation that the MM population is characterized by reduced CD4⁺ and normal CD8⁺ T-cell counts (supplemental Figure 1C,D).

Taken together, T-cell responses to RBD were significantly diminished in patients with MM compared with healthy controls, with only 34.2% of patients developing T-cell-derived immune response. T-cell response rates among serological responders (44.1%) vs nonresponders (44.4%) did not differ significantly. Regarding T-cell subset distribution, we identified reduced levels of SARS-CoV-2-specific IFN- γ ⁺CD4⁺ but not of IFN- γ ⁺CD8⁺ T cells in patients with MM.

In conclusion, we identified reduced serological and T-cell responses in patients with MM compared with healthy controls. Although more data with longer follow-up are expected from our longitudinal observational study, our data support the design of trials for repetitive boost vaccinations in immunocompromised patients, whenever possible in larger transnational consortia studies.⁸

In general, we urge for vaccination in all eligible individuals. Otherwise, there is an increasing risk of avoidable and potentially persistent infections and the evolution of novel virus strains with escape mutations to current vaccines and their spread into the communities.²¹⁻²⁵ In cases where it is unknown whether an immunocompromised patient has achieved sufficient immunity to dominant variants, we recommend advising the patients to follow the rules established for nonvaccinated patients.

Acknowledgments

The authors thank all treating physicians and technical staff involved in patient care and data acquisition. The authors thank Franziska Kalensee for excellent technical and experimental support, Birgit Wilde for her administrative support, as well as Heinfried H. Radeke, Martina Herrero San-Juan, Thomas Wölfel, and Catherine Wölfel for their valuable support with the ELISpot analysis. The authors thank all patients and healthy donors for their participation in this study.

This study has been performed with support of the "Corona Fund" of the Goethe University Frankfurt (E.U. and M.A.R.), of the German Research Foundation DFG (E.U., J.C., and A.S. as members of the SFB/CRC/IRTG 1292), and of the HMWK (E.U.; "Sondervermögen Hessisches Ministerium für Wissenschaft und Kunst").

Authorship

Contribution: J.C.E., J.C., A.S., E.W., H.H., and M.W. performed experiments; J.C.E., J.C., A.S., M.A.R., S.W., and H.B. analyzed data; I.v.M., E.U., and J.C.E. designed the study; I.v.M. and E.U. directed the study; J.C.E. and S.W. performed statistical analysis; I.v.M., E.U., J.C.E., J.C., R.D., H.F.R., S.C., O.B., H.S., and B.S. discussed the results and interpreted the data together with all coauthors; and J.C.E., I.v.M., and E.U. wrote the manuscript with contributions from all authors.

Conflict-of-interest disclosure: S.C. has received honorarium for serving on a clinical advisory board for BioNTech. I.v.M. received honoraria for advising Pfizer, Sanofi, BMS, GSK, Amgen, Janssen, Takeda, and AstraZeneca. The remaining authors declare no competing financial interests.

ORCID profiles: J.C., 0000-0002-9290-9697; E.W., 0000-0002-8434-6492; R.D., 0000-0002-3432-0438; M.A.R., 0000-0002-4158-5872; H.S., 0000-0001-8472-5516; H.B., 0000-0003-0088-2675; M.W., 0000-0001-5417-9307; I.v.M., 0000-0003-1699-4313; E.U., 0000-0001-8530-1192.

Correspondence: Ivana von Metzler, Medizinische Klinik II, Universitätsklinik Frankfurt am Main, Theodor-Stern-Kai 7, 60590 Frankfurt, Germany; e-mail: Ivana.Metzler@kfg.de

Footnotes

Submitted 23 July 2021; accepted 29 September 2021; prepublished online on *Blood* First Edition 17 October 2021.

*J.C.E., J.C., I.v.M., and E.U. contributed equally to this study.

The online version of this article contains a data supplement.

There is a *Blood* Commentary on this article in this issue.

REFERENCES

- Rajkumar SV. Multiple myeloma: 2020 update on diagnosis, risk-stratification and management. *Am J Hematol*. 2020;95(5):548-567.
- Ludwig H, Boccadoro M, Moreau P, et al. Recommendations for vaccination in multiple myeloma: a consensus of the European Myeloma Network. *Leukemia*. 2021;35(1):31-44.
- Hultcrantz M, Richter J, Rosenbaum C, et al. COVID-19 infections and outcomes in patients with multiple myeloma in New York City: a cohort study from five academic centers. *medRxiv*. 2020.
- Rößler MJ, Risch L, Tesch F, et al. Hierarchisierung von Risikofaktoren für schwere COVID-19-Erkrankungsverläufe im Kontext der COVID-19-Schutzimpfungen – Eine gepoolte GKV-

Figure 2. T-cell response after 2 doses of SARS-CoV-2 vaccination. (A) Receptor-binding domain (RBD)-specific spot-forming units (SFUs) per 3×10^5 peripheral blood mononuclear cells (PBMCs) stratified for healthy controls (Ctrl) vs patients with MM for quantification of IFN- γ -mediated T-cell response. (B) S2-specific SFUs and (C) CEF/CEFT-specific SFUs per 3×10^5 PBMCs stratified for Ctrl vs patients with MM. SFUs in the negative control were subtracted from all RBD, S2, and CEF/CEFT-peptide treated conditions to normalize for unspecific IFN- γ secretion. Dashed horizontal lines indicate cutoff, determined by ROC analysis for T-cell response (D). The graph shows the tests sensitivity plotted against the specificity (100% – proportion of false positives) measured by the IFN- γ response of healthy individuals before and after SARS-CoV-2 vaccination (T1 and T3) upon stimulation with S2 and RBD peptides (area = 0.7767; 95% confidence interval, 0.6431-0.9121, $P = .002$). We selected a cutoff value of 55 SFU per 3×10^5 PBMCs because this value still yields a specificity >95% (95.5%), whereas the sensitivity is >50% (53.8%). (E) Representative images of IFN- γ ELISpot from patients with MM who did or did not respond in comparison with a healthy control who responded to the vaccination. (F) Spearman correlation matrix for levels of serologic response, T-cell response, and prevaccination immune cell status. The color axis corresponds to the Spearman correlation coefficient for each correlation. P values are reported as * $<.05$, ** $<.01$, *** $<.001$. (G) Multivariate logistic regression analysis for factors affecting achievement of T-cell response with numeric report of the odds ratio (OR) and P values $<.05$ are indicated with *.

- Routinedatenanalyse basierend auf 30 Mio. Versicherten. *Epidemiol Bull.* 2021;19:3-12.
5. Ribas A, Sengupta R, Locke T, et al. AACR COVID-19 and cancer task force. Priority COVID-19 vaccination for patients with cancer while vaccine supply is limited. *Cancer Discov.* 2021;11(2):233-236.
 6. Desai A, Gainor JF, Hegde A, et al. COVID-19 and Cancer Clinical Trials Working Group. COVID-19 vaccine guidance for patients with cancer participating in oncology clinical trials [published correction appears in *Nat Rev Clin Oncol.* 2021;18(5):320]. *Nat Rev Clin Oncol.* 2021;18(5):313-319.
 7. Mazza JJ, Yale SH, Arrowood JR, et al. Efficacy of the influenza vaccine in patients with malignant lymphoma. *Clin Med Res.* 2005;3(4):214-220.
 8. Barrière J, Re D, Peyrade F, Carles M. Current perspectives for SARS-CoV-2 vaccination efficacy improvement in patients with active treatment against cancer. *Eur J Cancer.* 2021;154:66-72.
 9. Bird S, Panopoulou A, Shea RL, et al. Response to first vaccination against SARS-CoV-2 in patients with multiple myeloma. *Lancet Haematol.* 2021;8(6):e389-e392.
 10. Maneikis K, Šablauskas R, Ringelevičiūtė U, et al. Immunogenicity of the BNT162b2 COVID-19 mRNA vaccine and early clinical outcomes in patients with haematological malignancies in Lithuania: a national prospective cohort study. *Lancet Haematol.* 2021;8(8):e583-e592.
 11. Van Oekelen O, Gleason CR, Agte S, et al; PVI/Seronet team. Highly variable SARS-CoV-2 spike antibody responses to two doses of COVID-19 RNA vaccination in patients with multiple myeloma. *Cancer Cell.* 2021;39(8):1028-1030.
 12. Pimpinelli F, Marchesi F, Piaggio G, et al. Fifth-week immunogenicity and safety of anti-SARS-CoV-2 BNT162b2 vaccine in patients with multiple myeloma and myeloproliferative malignancies on active treatment: preliminary data from a single institution. *J Hematol Oncol.* 2021;14(1):81.
 13. Terpos E, Trougakos IP, Gavriatopoulou M, et al. Low neutralizing antibody responses against SARS-CoV-2 in older patients with myeloma after the first BNT162b2 vaccine dose. *Blood.* 2021;137(26):3674-3676.
 14. Thakkar A, Gonzalez-Lugo JD, Goradia N, et al. Seroconversion rates following COVID-19 vaccination among patients with cancer. *Cancer Cell.* 2021;39(8):1081-1090.
 15. Sahin U, Muik A, Derhovanessian E, et al. COVID-19 vaccine BNT162b1 elicits human antibody and T_H1 T cell responses [published correction appears in *Nature.* 2021;590(7844):E17]. *Nature.* 2020;586(7830):594-599.
 16. Kohmer N, Rühl C, Ciesek S, Rabenau HF. Utility of different surrogate enzyme-linked immunosorbent assays (sELISAs) for detection of SARS-CoV-2 neutralizing antibodies. *J Clin Med.* 2021;10(10):2128.
 17. Khoury DS, Cromer D, Reynaldi A, et al. Neutralizing antibody levels are highly predictive of immune protection from symptomatic SARS-CoV-2 infection. *Nat Med.* 2021;27(7):1205-1211.
 18. Metzler I, Campe J, Huenecke S, et al. COVID-19 in a multiple myeloma patient: cellular and humoral immunity against SARS-CoV-2 in a short- and long-term view. *Res Square;* 2021.
 19. Bilich T, Roerden M, Maringer Y, et al. Preexisting and post-COVID-19 immune responses to SARS-CoV-2 in patients with cancer. *Cancer Discov.* 2021;11(8):1982-1995.
 20. Bange EM, Han NA, Wileyto P, et al. CD8⁺ T cells contribute to survival in patients with COVID-19 and hematologic cancer. *Nat Med.* 2021;27(7):1280-1289.
 21. Abdul-Jawad S, Baù L, Alaguthurai T, et al. Acute immune signatures and their legacies in severe acute respiratory syndrome coronavirus-2 infected cancer patients. *Cancer Cell.* 2021;39(2):257-275.e6.
 22. Avanzato VA, Matson MJ, Seifert SN, et al. Case study: prolonged infectious SARS-CoV-2 shedding from an asymptomatic immunocompromised individual with cancer. *Cell.* 2020;183(7):1901-1912.
 23. Aydiello T, Gonzalez-Reiche AS, Aslam S, et al. Shedding of viable SARS-CoV-2 after immunosuppressive therapy for cancer. *N Engl J Med.* 2020;383(26):2586-2588.
 24. Choi B, Choudhary MC, Regan J, et al. Persistence and evolution of SARS-CoV-2 in an immunocompromised host. *N Engl J Med.* 2020;383(23):2291-2293.
 25. Kemp SA, Collier DA, Datir RP, et al; COVID-19 Genomics UK (COG-UK) Consortium. SARS-CoV-2 evolution during treatment of chronic infection. *Nature.* 2021;592(7853):277-282.

DOI 10.1182/blood.2021013429

© 2022 by The American Society of Hematology

Downloaded from <http://ashpublications.net/blood/article-pdf/139/1/137/1857731/bloodh42021013429.pdf> by guest on 05 May 2024

TO THE EDITOR:

Humoral and cellular responses after COVID-19 vaccination in anti-CD20-treated lymphoma patients

Nora Liebers,^{1,2} Claudius Speer,³ Louise Benning,³ Peter-Martin Bruch,¹ Isabelle Kraemer,¹ Julia Meissner,¹ Paul Schnitzler,⁴ Hans-Georg Kräusslich,⁴ Peter Dreger,¹ Carsten Mueller-Tidow,^{1,2} Isabel Poschke,^{5,*} and Sascha Dietrich^{1,2,6,*}

¹Department of Medicine V, Heidelberg University Hospital, Heidelberg, Germany; ²National Center for Tumor Diseases Heidelberg, Heidelberg, Germany; ³Department of Nephrology, Heidelberg University Hospital, Heidelberg, Germany; ⁴Department of Infectious Diseases, Virology, Heidelberg University Hospital, Heidelberg, Germany; ⁵Immune Monitoring Unit, German Cancer Research Center, Heidelberg, Germany; and ⁶European Molecular Biology Laboratory (EMBL), Heidelberg, Germany

Patients with hematological neoplasms, including lymphoma patients, have a high risk for severe COVID-19 diseases.¹⁻⁴ COVID-19 vaccinations induce strong serologic and T-cell responses in immunocompetent humans and thereby effectively prevent severe COVID-19 disease courses.⁵⁻⁸ There is accumulating evidence that humoral immune responses after vaccination are impaired in patients with hematological

malignancies, especially if they were treated with B-cell-depleting therapies such as anti-CD20 antibodies.⁹⁻¹¹ However, there is limited information about the T-cell-mediated vaccine responses after anti-CD20 treatment. In this study, we investigated the humoral and cellular responses after COVID-19 vaccination in lymphoma patients who had received anti-CD20 treatment.