

Unwinding the von Willebrand factor strings puzzle

Karen De Ceunynck,¹ Simon F. De Meyer,¹ and Karen Vanhoorelbeke¹

¹Laboratory for Thrombosis Research, Interdisciplinary Research Facility Life Sciences, KU Leuven afdeling Kortrijk (KULAK), Kortrijk, Belgium

von Willebrand factor (VWF) is amongst others synthesized by endothelial cells and stored as ultra-large (UL) VWF multimers in Weibel-Palade bodies. Although UL-VWF is proteolysed by ADAMTS13 (a disintegrin-like and metalloprotease domain with thrombospondin type-1 motif, number 13) on secretion from endothelial cells, *in vitro* experiments in the absence of ADAMTS13 have demonstrated that a proportion of these UL-VWF multimers remain anchored to the activated endothelium. These multimers unravel, bind plate-

lets, and wave in the direction of the flow. These so-called VWF “strings” have also been visualized *in vivo*, lining the lumen of activated mesenteric veins of *Adamts13*^{-/-} mice. Various studies have demonstrated the extraordinary length of these VWF strings, the availability of their platelet binding and ADAMTS13 cleavage sites, and the possible nature of their endothelial attachment. VWF strings are also capable of tethering leukocytes and parasite-infected red blood cells. However, the majority of studies have been

performed in the absence of ADAMTS13, a condition only experienced in thrombotic thrombocytopenic purpura. A normal functional role of VWF strings in healthy persons or in other disease pathologies remains unclear. In this review, we discuss some of the puzzling characteristics of VWF strings, and we debate whether the properties of VWF strings in the absence of ADAMTS13 might be relevant for understanding (patho)physiologic mechanisms. (*Blood*. 2013;121(2): 270-277)

Introduction

von Willebrand factor (VWF) strings correspond to ultra-large (UL) VWF multimers that, after secretion from the endothelium, remain anchored to the cell surface. As a result of this tethering and the rheologic forces of flow, these VWF multimers unravel, can bind platelets, and wave in the direction of the blood flow¹ (Figure 1). Since their discovery, platelet-decorated VWF strings have proved fascinating, and yet puzzling entities, with interesting and rather unique characteristics. VWF strings can be extraordinarily long, can be anchored to endothelial cells through a discrete number of attachment sites, contain active platelet binding sites, and are susceptible to specific proteolysis by its regulating protease, ADAMTS13 (a disintegrin-like and metalloprotease domain with thrombospondin type-1 motif, number 13). VWF strings are considered prothrombotic and might therefore contribute to the pathophysiology of thrombotic disorders, such as thrombotic thrombocytopenic purpura (TTP) and arterial thrombosis. In addition, platelet-decorated VWF strings can also provide a reactive surface for leukocytes and parasite-infected red blood cells, which has suggested possible roles in both inflammation and malaria.

In this review, we discuss the typical features of these intriguing VWF strings and highlight questions that remain to be resolved and that would provide a better understanding of VWF string biochemistry. VWF strings were first discovered and studied in the absence of ADAMTS13, a situation that does not mimic normal physiologic conditions. In the majority of pathophysiologic conditions, plasma ADAMTS13 activity levels are at most decreased, but very rarely absent. To this end, a discussion on the possible involvement of VWF strings in disease pathology might serve to put VWF string research into perspective.

VWF, UL-VWF multimers, and ADAMTS13

VWF is the largest biopolymer present in plasma, and consists of multimers ranging in size from 500 to 10 000 kDa, with the largest

multimers being the most hemostatically active.^{2,3} The building block of these multimers is a mature VWF subunit consisting of D, A, B, C, and CK domains,^{4,5} although the domain organization of VWF has recently been reannotated.⁶ In circulation, VWF multimers adopt a folded, globular conformation that shields the platelet glycoprotein Ib (GPIb) binding sites in the VWF A1 domain.^{7,8} This folding serves to prevent spontaneous binding of platelets to VWF in circulation. However, immobilization of VWF at sites of vascular injury (via the VWF A3-collagen interaction) leads to VWF unfolding in response to the shear forces exerted by the flowing blood. This exposes VWF A1 domains that, in turn, reveal the binding sites for the platelet GPIb receptor. The VWF-GPIb interaction is characterized by a fast association/dissociation rate, which enables platelets to “roll” over the VWF surface and provide the opportunity to establish firm platelet adhesion through the collagen receptors.⁹⁻¹² This adhesion step, which is particularly relevant under high shear conditions, initiates platelet activation and aggregation, resulting in the formation of a platelet plug that seals the damaged vessel wall. VWF also plays a role in secondary hemostasis as a carrier protein for coagulation factor VIII through interaction with the VWF D'D3 domain, which reduces both the clearance and degradation of this procofactor.^{13,14}

Megakaryocytes and endothelial cells are the only cells that express VWF, although all circulating VWF is derived from the endothelium. Both endothelial cells and platelets store UL-VWF (> 10 000 kDa) in Weibel-Palade bodies (WPBs)¹⁵ and α -granules,¹⁶ respectively, for regulated release.³ Given the unusually large molecular size of these stored UL-VWF multimers, specialized molecular mechanisms exist that enable both compact storage of VWF and its ordered unfurling during secretion.^{17,18} In WPB, UL-VWF assembles into well-defined helical tubules,¹⁹ which align in parallel and often extend the entire length of the organelle. This organization not only allows packing of UL-VWF multimers into WPB that are 1-5 μ m in length but also permits

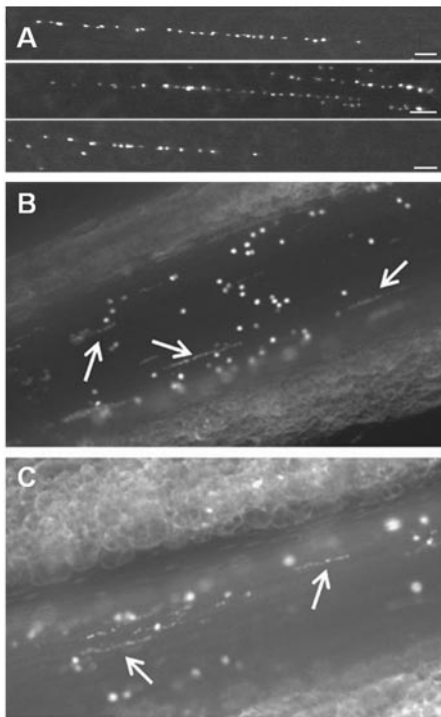


Figure 1. Platelet-decorated VWF strings rapidly appear on the surface of activated endothelial cells. (A) In vitro, platelet-decorated VWF strings are visualized by fluorescence microscopy on the surface of blood outgrowth endothelial cells perfused with washed DIOC6-labeled platelets at a shear rate of 250 seconds⁻¹.⁴³ Scale bar represents 50 μ m. (B-C) Platelet-decorated VWF strings (white arrows) appear on the surface of mesenteric veins of *Adams13*^{-/-} mice after activation with 10% FeCl₃ solution (B) or calcium ionophore A23187 (C). Endogenous platelets were labeled by intravenous administration of rhodamine 6G.⁴² Microscopy was performed using a Nikon Eclipse TE200 inverted fluorescence microscope equipped with a 20 \times PLAN objective (numeric aperture 0.4) coupled to an ORCA-R² Hamamatsu CCD camera. Images were recorded using Hokawo software (Hamamatsu Photonics).

organized release of UL-VWF molecules.^{19,20} VWF exocytosis can occur from single WPB²¹ or from secretory pods that are formed through the coalescence of multiple WPB.^{17,22} UL-VWF released from WPB is hyperreactive compared with normal circulating plasma VWF because they can induce spontaneous microaggregate formation in blood. Although the exact mechanism underlying UL-VWF hyperreactivity is not fully understood, it is probable that this is a combination of its extraordinary length, the higher number of platelet and collagen binding sites,²³ and its propensity to adopt an open, platelet-binding conformation.²⁴ This latter point is exemplified by the observation that spontaneous high-strength bonds can be formed between UL-VWF and GPIb, whereas this does not occur using normal circulating plasma VWF multimers.²⁴ Similarly, the nanobody, AU/VWF-a12, which specifically recognizes “active” or “open” A1 domains, only binds UL-VWF in solution and not normal plasma VWF.²⁵ Given this hyperreactivity, UL-VWF is more potent in facilitating shear-induced platelet aggregation than plasma VWF.²⁶ For this reason, UL-VWF multimers are potentially harmful in the normal circulation and must be processed into smaller less reactive molecules that will not precipitate unwanted platelet aggregation. The major enzyme that processes UL-VWF is ADAMTS13.^{27,28}

ADAMTS13 is constitutively active in plasma, as it is expressed and secreted as an active enzyme. Unusually, therefore, VWF proteolysis by ADAMTS13 is regulated by conformational changes in the VWF substrate (rather than by activation/inhibition of the enzyme).^{29,30} The ADAMT13 cleavage site in VWF

(Met1605-Tyr1606)³¹ is normally hidden within the middle of the folded A2 domain, whereas VWF is in its circulating globular conformation, making globular VWF essentially resistant to proteolysis by ADAMTS13.^{32,33} However, shear-induced unfolding of this domain not only exposes the scissile bond but also reveals multiple exosites that interact with different ADAMTS13 domains that dictate substrate specificity.³⁴ After secretion from the endothelium, UL-VWF multimers spontaneously unfold in response to the high shear forces exerted by the flowing blood, enabling ADAMTS13 to both access and cleave the exposed A2 domains.^{29,35} As the VWF multimers that arise after proteolysis are smaller, they can adopt a folded conformation that does not spontaneously unravel in response to the normal circulating shear forces, which serves to conceal both ADAMTS13 cleavage and platelet binding sites.

When ADAMTS13 is deficient, UL-VWF multimers have the potential to accumulate in plasma, which can cause spontaneous platelet binding and agglutination. This can, in turn, precipitate TTP, a serious microangiopathic disorder in which platelet-rich microthrombi block arterioles and capillaries, leading to organ failure and death, if left untreated.^{36,37} Hereditary TTP is caused by homozygous or compound heterozygous mutations in the *ADAMTS13* gene,²⁷ although ADAMTS13 deficiency more commonly arises through acquired TTP involving the formation of inhibitory anti-ADAMTS13 autoantibodies.³⁸

VWF strings

Interestingly, a proportion of UL-VWF multimers that are released from WPB (particularly in the absence of ADAMTS13 activity) remain attached to the surface of activated endothelial cells and can bind platelets.^{1,39} Dong et al showed that perfusion of stimulated HUVECs in vitro with washed platelets or with CHO cells expressing GPIb-IX-V resulted in the appearance of “beads-on-a-string-like” structures that wave in the direction of flow¹ (Figure 1A). These platelet-decorated strings were shown to be composed of VWF, as antibodies inhibiting the GPIb-VWF interaction specifically prevented visualization of any platelet binding and endothelial cells defective in VWF synthesis failed to form strings. Rather surprisingly, platelets attached firmly to these VWF strings,¹ which is in contrast to the rolling behavior of platelets on VWF bound to collagen.⁹ VWF strings could be formed by various different endothelial cell lines, at both low and high shear stresses, and could reach exceptional lengths of up to 1 mm. Finally, these VWF strings could be rapidly cleaved after perfusion with ADAMTS13 in a process that could be inhibited by autoantibodies from acquired TTP patients.¹ More recently, platelet-decorated VWF strings have been observed over the surface of VWF-expressing human embryonic kidney cells, indicating that the ability to form VWF strings is not endothelial cell specific.⁴⁰

In vivo, platelet-decorated VWF strings can be observed transiently on the surface of the activated endothelium, but these are rapidly proteolytically removed by endogenous ADAMTS13 in WT mice.^{39,41} However, in mice with ADAMTS13 deficiency, the lifetime of these VWF strings is significantly prolonged (Figure 1B-C).^{41,42}

How long are VWF strings?

The length of VWF strings is remarkable. They are typically several 100 μ m long but can reach extraordinary lengths of up to 1 mm.¹ A detailed analysis of VWF string length in vitro revealed a median length of \sim 100 μ m, with 500 μ m being the length of the

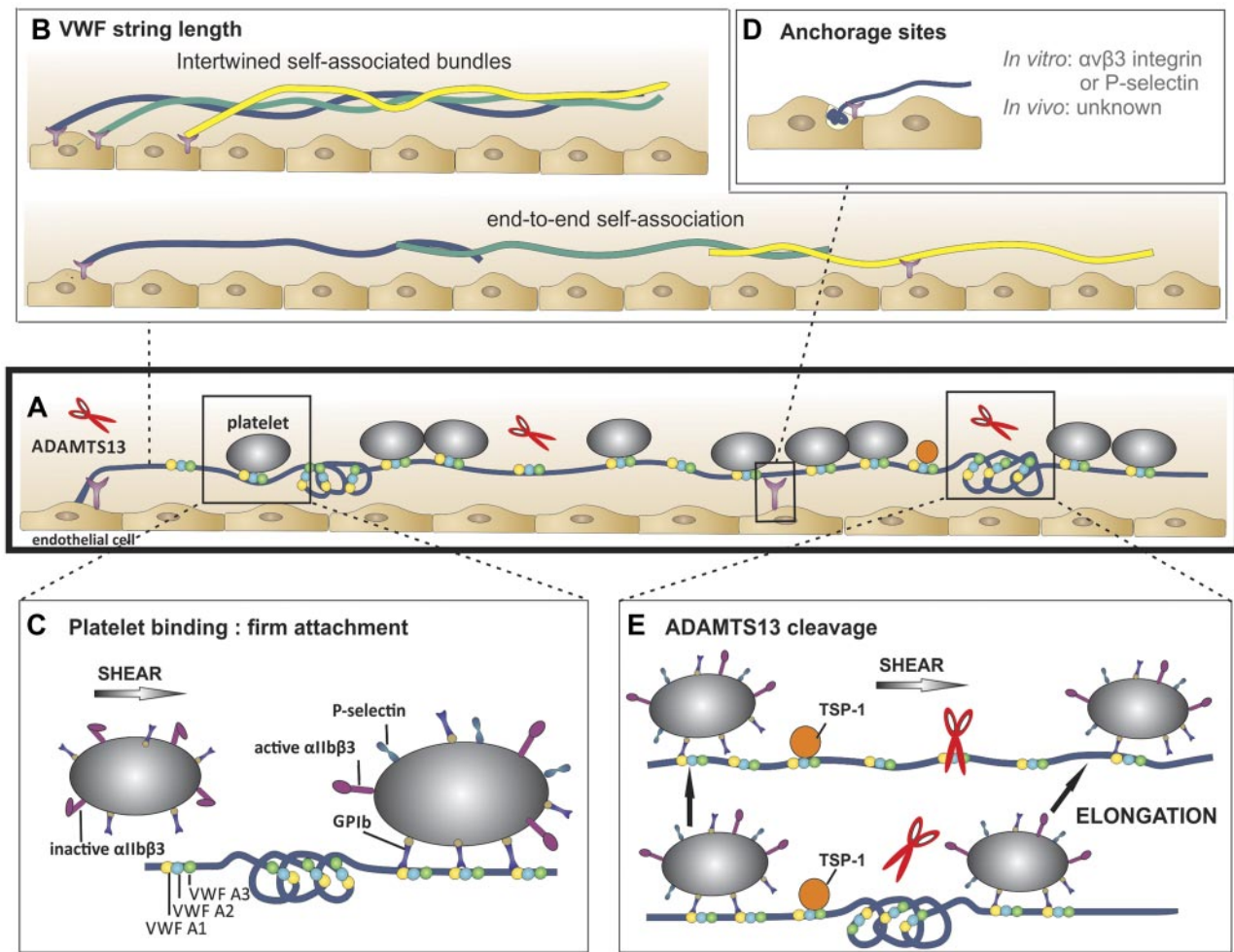


Figure 2. VWF string characteristics. (A) A representative VWF string with VWF A1 (yellow circles), VWF A2 (blue circles), and with VWF A3 domains (green circles) in folded and unfolded parts of the VWF multimer (blue line). Attachment sites are represented by purple Y-shaped symbols. Platelets (gray circles) bind to open and accessible A1 domains. ADAMTS13 (red scissors) can digest unfolded VWF A2-domains. (B) VWF string length *in vitro*. Top: VWF multimers may consist of multiple self-associated multimers. Bottom: Occasionally, extraordinary long VWF strings (> 1 mm) are observed. Hence, these strings are probably formed by end-to-end self-association of different VWF multimers. (C) Platelet binding to VWF strings. Platelets bind to open VWF A1 domains (yellow circles) via their GPIb receptors. This binding does not result in a rolling movement of the platelets but in a firm adhesion to VWF strings. Bound platelets become activated as evidenced by the presence of P-selectin and activated $\alpha IIb \beta 3$ on their surface.⁵¹ (D) Anchorage of VWF strings to endothelial cells. VWF strings are expelled from the WPB and remain anchored to the endothelial cells. P-selectin and $\alpha v \beta 3$ have been identified as possible receptors involved in VWF string attachment *in vitro*, whereas these receptors do not seem to play a role *in vivo*. (E) ADAMTS13-mediated proteolysis of VWF strings. Top: ADAMTS13 (red scissors) mediated proteolysis of VWF strings is regulated by conformational changes in VWF and unfolding of its A2 domain (blue circle) induced by shear stress. Proteolysis occurs preferentially at sites of local elongations of VWF strings, which can be monitored by an increase in interplatelet distances (arrows).⁴³ Bottom: ADAMTS13 cannot access the cleavage site in VWF A2 domains (blue circle) that are folded or cannot bind when TSP-1 (orange circle) interacts with the VWF A2-A3 domains.

longest strings observed.⁴³ Hypothetically, a VWF tubule that extends the entire length of a 5 μm WPB would be predicted to be composed of ~ 3700 VWF monomers (assuming a 2.7-nm length per VWF dimer in a helix).¹⁹ As each monomer spans ~ 60 nm while in its extended conformation,⁴⁴ a completely extended VWF multimer originating from a single 5- μm tubule should measure 220 μm in length. However, as VWF strings are still able to elongate further under flow conditions,⁴³ this suggests that VWF strings are not necessarily fully extended on the endothelial surface. Therefore, based on these observations, strings with lengths > ~ 200 μm must presumably be composed of different self-associated VWF multimers, rather than single VWF molecules (Figure 2A-B). Such VWF strings composed of different VWF multimers that have formed intertwined bundles through self-association have indeed been visualized by electron microscopy.⁴⁵ Thus, extraordinarily long VWF strings as long as 1 mm could arise through end-to-end self-association of VWF multimers (Figure 2B bottom). Of particular note, as long strings form in the

absence of VWF in the perfusate, it is probable that self-association occurs between VWF multimers secreted from WPB. However, when VWF is present in the perfusate, network-like VWF bundles can form that are thicker and longer than single VWF multimers.⁴⁶⁻⁴⁸ This process appears to be regulated by exposed thiol/disulfide exchange in VWF.^{46,47} *In vivo*, it is debatable whether extraordinarily long VWF strings actually form either through self-association, or by association of plasma multimers with VWF strings, as the length of the strings visualized *in vivo* range from 20 to 100 μm and VWF networks are not generally observed.^{42,49}

Which factors regulate platelet binding to VWF strings?

A remarkable feature of VWF multimers anchored to endothelial cells is that they can rapidly recruit platelets from the circulation,

which is in contrast to plasma VWF in which the platelet-binding sites are hidden by its folded globular conformation (Figure 1). Because VWF strings are derived from WPB-released UL-VWF, a logical explanation for the rapid VWF-platelet interactions that ensue is because of the presence of active A1 domains that, as mentioned previously, appear typical for UL-VWF. Further platelet binding sites could also become exposed in VWF through the effects of the shear stress, which is known to induce conformational changes in VWF and expose cryptic A1 domains.^{48,50}

Once bound, platelets do not roll over VWF strings but, rather, remain firmly attached. Why the typical rolling behavior of platelets that is classically seen over VWF bound to collagen is not seen on VWF strings remains unclear. It is possible that the active A1 domains in UL-VWF strings are able to interact strongly with GPIb, allowing immediate arrest. Rolling of platelets over VWF surfaces is normally characterized by high association and dissociation rates and by an increase in bond life with increasing shear rates (catch bond).¹¹ Therefore, perhaps in a manner analogous to type 2B VWF,¹¹ the open conformation of A1 domains in VWF strings might result in longer bond lifetimes with GPIb, allowing engagement of other platelet receptors, such as activated α IIB β 3. Consistent with this hypothesis is the finding that platelets stably attached to VWF strings are activated, as evidenced by the exposure of both P-selectin and activated α IIB β 3 on their surface⁵¹ (Figure 2C right).

It appears that not all A1 domains present in VWF strings interact with platelets as the periodicity of the platelet-binding pattern on VWF strings is not consistent (Figure 1). Why platelets only bind to particular sites is not totally clear. It could be that not all A1 domains exist in the open conformation necessary for platelet binding or that some of the A1 domains remain hidden in certain sections of the VWF string (Figure 2C left). An alternative and interesting hypothesis is that a subset of A1 domains may be shielded by proteins that colocalize with VWF in the WPBs or that bind VWF in plasma. Osteoprotegerin,^{52,53} angiopoietin,⁵⁴ and galectins-1 and -3⁵⁵ all colocalize with VWF in WPBs and are known to bind and also remain associated with the VWF A1 domain or VWF strings after secretion from endothelial cells. However, to date, none of these proteins has been shown to interfere with platelet binding to VWF strings, as inhibition experiments were either negative or are yet to be performed. Conversely, the plasma protein β 2-glycoprotein I both binds to open VWF A1 domains and also inhibits GPIb binding, which could theoretically modulate availability of platelet binding sites in VWF strings.⁵⁶ However, it is yet to be demonstrated that β 2-glycoprotein I can actually interact with VWF strings.

Accessibility or reactivity of A1 domains in VWF strings varies greatly within a single string as well as between different strings. Curiously, not all VWF strings released from endothelial cells bind platelets, suggesting that some strings have no accessible and/or open A1 domains.⁴⁵ Why platelet-free and platelet-decorated VWF strings exist remains to be determined.

How are VWF strings anchored to endothelial cells?

Anchorage of VWF strings to endothelial cells appears to be mediated by just a few adhesion sites per string. It is this that allows (parts of) the string to wave in the direction of flow (Figure 2A,D).^{1,45} Specific contact points between VWF strings and the endothelial cell membrane have been visualized directly by electron microscopy predominantly at the upstream terminus of the

string but also at sites along the length of the string.⁴⁵ Unambiguous identification of the endothelial receptor or proteins involved in anchorage of VWF strings has proven difficult (Figure 2D) and appears to depend on experimental conditions and the species examined. In vitro, either P-selectin or α v β 3 was identified as receptors controlling VWF string attachment to endothelial cells depending on whether Ca^{2+} and Mg^{2+} are absent or present in the perfusate, respectively (Figure 2A,D).^{45,57} The mechanism(s) of string attachment to endothelial cells in vivo seems to be different. Neither P-selectin or α v β 3 are involved in string anchoring to stimulated veins in mice as the numbers and lengths of VWF strings in P-selectin or α v β 3 deficient mice do not differ from WT mice.⁵⁸ In addition, although VWF strings can be generated in vitro over human endothelial cells under both venous and arterial flow conditions,^{1,45} they are only observed in the venous vasculature in mice.^{41,42,59} Whether this might be explained by the involvement of different attachment molecules in vitro and in vivo remains unclear.⁴⁵ It must also be considered that differences in VWF expression and WPB biology in arterial and venous endothelial cells could also play an important role.

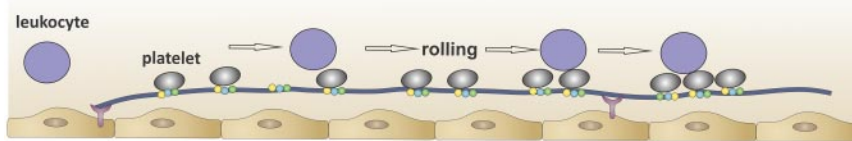
As heparin binds VWF, it has naturally been suggested that string anchorage might be mediated (at least in part) by highly negatively charged glycosaminoglycans present in the endothelial glycocalyx, although direct evidence for this is still lacking.^{39,58}

How is proteolysis of VWF strings by ADAMTS13 regulated?

VWF strings are rapidly removed in the presence of ADAMTS13. Similar to the GPIb binding sites in the A1 domain, ADAMTS13 cleavage site in the VWF A2 domains is also cryptic in normal circulating plasma VWF. As VWF strings are rapidly cleaved by ADAMTS13 both in vitro and in vivo, the scissile bond in the VWF A2 domain must therefore rapidly become exposed on VWF secretion (Figure 2A,E top). Unfolding of the A2 domain and exposure of the cleavage site are probably induced by shear forces exerted on the VWF string (Figure 2E top).^{60,61} Indeed, we recently demonstrated that platelet-decorated VWF strings are preferentially truncated under shear stress by ADAMTS13 specifically at sites of local elongation (Figure 2E). Such elongation reveals both ADAMTS13 binding exosites as well as the scissile bond in the VWF A2 domains, which permits ADAMTS13-mediated cleavage.⁴³ When studied in vitro and in the absence of shear, expulsion of VWF from endothelial WPB alone is sufficient to expose ADAMTS13 cleavage sites, implying that VWF exocytosis can cause conformational changes in VWF A2 domains that permit proteolysis even in the absence of flow.⁶² Platelet-decorated and platelet-free VWF strings are cleaved by ADAMTS13 at similar rates, suggesting that platelet binding has little influence on proteolysis.⁴⁵ This is in contrast to platelet binding to plasma VWF, which appreciably enhances ADAMTS13-mediated proteolysis under shear.⁶¹

Thrombospondin-1 (TSP-1; Figure 2E), a multidomain protein that interacts with a wide variety of receptors, integrins, and extracellular matrix proteins also seems to regulate cleavage of strings by ADAMTS13.⁶³ In TSP-1-deficient (*Thbs1*^{-/-}) mice, fewer VWF strings were observed compared with WT mice. Moreover, string formation could be increased by infusion of TSP-1 in *Thbs1*^{-/-} mice. The inhibitory effect of TSP-1 may be explained by competition between TSP-1 and ADAMTS13 for the same binding sites in the VWF A2 and A3 domains.^{63,64}

A Inflammation



B Malaria

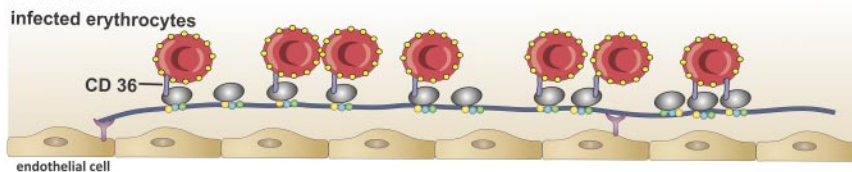


Figure 3. Interaction of platelet-decorated VWF strings with leukocytes and infected red blood cells in vitro. (A) Leukocytes (purple circles) interact with platelet-decorated VWF strings in vitro in the absence of ADAMTS13,⁵¹ which results in rolling of leukocytes over the VWF string, suggesting that VWF strings in the absence of ADAMTS13 can contribute to inflammation. (B) Red blood cells infected with the malaria parasite *P falciparum* (red circles) adhere to platelet-decorated VWF strings via the platelet receptor CD36 in vitro in the absence of ADAMTS13.⁸⁵ This mechanism might explain binding of infected red blood cells to the brain endothelium in cerebral malaria.

Does VWF string proteolysis generate the smaller VWF multimers found in plasma?

Platelet-decorated VWF strings anchored to endothelial cells are proteolytically released by ADAMTS13 in a limited number of steps (up to 8, but with a median of 3 cleavage events), and at sites randomly distributed through the VWF string.⁴³ Based on these findings, the cleaved VWF fragments are still considered UL when released into the circulation,^{43,65} as their extended length ranges from 5 to > 100 μm .⁴³ The fate of these circulating platelet-UL-VWF complexes is unknown. They could be further digested by ADAMTS13, as ADAMTS13 cleavage sites are likely to be rapidly exposed in these circulating platelet-UL-VWF multimers.^{35,61} Alternatively, because of their prothrombotic nature, they might be preferentially cleared from circulation via an as yet unidentified mechanism.

Do other proteases digest VWF strings?

In vitro, plasma VWF can be digested by proteases other than ADAMTS13, including leukocyte proteases proteinase 3, cathepsin G, elastase, and granzyme B.⁶⁶⁻⁷⁰ Susceptibility to cleavage is also influenced by conformational changes in VWF.^{69,70} The cleavage sites for proteinase 3, cathepsin G, and elastase are situated at or near the ADAMTS13 cleavage site,⁶⁹ whereas sites for granzyme B⁷⁰ are located in the A1 domain and at the A2 and A3 domain boundary. The presence of proteolytic fragments of VWF in *Adamts13*^{-/-} mice further supports the notion that ADAMTS13-independent processes also regulate VWF size.⁷¹ That said, the (patho)physiologic role of these proteases remains questionable because VWF fragments are still observed in neutropenic patients and after depletion of neutrophils in *Adamts13*^{-/-} mice.⁷¹ Moreover, proteolysis of VWF strings by enzymes other than ADAMTS13 has only been reported for granzyme B,⁷⁰ and used concentrations were appreciably higher than those likely to be found in plasma. Whether proteases, such as proteinase 3, cathepsin G, elastase, and granzyme B, are relevant for VWF string proteolysis in vivo, perhaps after local accumulation at sites of inflammation remains to be studied.

What is the physiologic role of VWF strings?

Although our understanding of VWF strings increased appreciably in recent years, many important questions remain unanswered.

Perhaps the biggest question centers around whether VWF strings attached to endothelial cells play a specific functional role in (patho)physiologic processes. We discuss the consequences of VWF string-blood cell interactions in different pathologic settings in which interactions between the activated endothelium and blood cells have been identified, and the potential relevance of such interactions in the vascular system in the presence/absence of ADAMTS13.

A role of VWF strings in disease pathology seems likely when ADAMTS13 activity is absent (eg, in TTP). However, although persisting platelet-decorated VWF strings are observed on the surface of activated microvessels in *Adamts13*^{-/-} mice where they can promote thrombus formation, these VWF strings are not observed in *Adamts13*^{-/-} arterioles.^{39,41,42,59} As arterial, rather than venous, thrombi contribute to the pathology of TTP, it might seem unlikely that VWF strings are responsible for TTP-associated microangiopathy. This is in stark contrast with the role of circulating UL-VWF in TTP, which can spontaneously interact with platelets and therefore precipitate the formation of microthrombi that block arterioles and capillaries in humans,^{36,37} mice^{41,72} and baboons,⁷³ causing organ failure and death.

Although the role of VWF and UL-VWF has been clearly demonstrated in arterial thrombosis,⁷⁴ the absence of platelet-decorated VWF strings in damaged arterioles of *Adamts13*^{-/-} mice^{41,42,59} suggests that VWF strings, per se, might not contribute to arterial thrombosis, at least in mice. Recently, it was demonstrated in a mouse model that deep vein thrombosis is dependent on VWF.⁷⁵ Flow restriction in the inferior vena cava induced VWF-dependent platelet adhesion and thrombus formation, but a specific role for VWF strings in this model was not examined.

VWF strings have been suggested to contribute to inflammation. In vitro experiments have shown that, in the absence of ADAMTS13, platelet-decorated VWF strings can slow down leukocyte rolling on endothelial cells (Figure 3A).⁵¹ ADAMTS13 deficiency also increases basal leukocyte rolling in vivo and promotes leukocyte adhesion and extravasation under inflammatory conditions. This proinflammatory effect is dependent on VWF and platelets, as almost no leukocyte tethering was observed in *VWF*^{-/-} mice or when platelets were absent.⁷⁶ Accordingly, a strong, protective anti-inflammatory effect of ADAMTS13 was recently observed in a mouse model of acute myocardial infarction.^{77,78} A plausible mechanism for this is that ADAMTS13 attenuates inflammatory processes by removing the leukocyte-capturing VWF strings from the endothelial surface. Importantly, though, ADAMTS13 levels tend (if anything) to be decreased, rather than absent, in thrombotic⁷⁹ and inflammatory diseases.⁸⁰⁻⁸⁴

Therefore, whether partially reduced ADAMTS13 levels are sufficient to enable platelet-decorated VWF strings to survive long enough to mediate inflammatory diseases remains a key unanswered question.

In cerebral malaria, *Plasmodium falciparum*-infected erythrocytes adhere to the activated endothelium, which leads to their sequestration in the capillaries and postcapillary venules of the brain. Adherence to the vascular endothelium is normally considered to occur via an interaction between the parasite-encoded protein, *P falciparum* erythrocyte membrane protein 1, and the endothelial counter-receptor CD36.⁸⁵ However, CD36 is not expressed at high levels in the brain microcirculation, suggesting that adhesion might occur via a different mechanism. Bridges et al elegantly demonstrated that platelet-decorated VWF strings could potentially play an important role in the adhesion of infected erythrocytes to endothelial cells lacking CD36.⁸⁶ In their *in vitro* model, platelets bound to the VWF strings provided the CD36 receptors required for infected erythrocyte binding to brain endothelium (Figure 3B). In this way, complexes of red blood cells, platelets, and VWF strings attached to the endothelium might contribute to parasite sequestration and the associated microangiopathy. Again, although in malaria levels of VWF and UL-VWF are increased^{87,88} and plasma ADAMTS13 activity is often reduced,⁸⁹ it remains to be determined whether string survival time in these patients is long enough to support this mechanism.

Plasma UL-VWF also accumulates in sickle cell disease (SCD) patients.^{90,91} As UL-VWF can bind spontaneously both to platelets and to sickle red blood cells, it may have the propensity to aggravate clinical manifestations of SCD, such as aggregate formation and red blood cell lysis.⁹²⁻⁹⁴ VWF-dependent sickle cell adhesion to stimulated rat venous endothelium, followed by vaso-obstruction, has been reported.⁹³ However, these experiments were once again performed in the absence of ADAMTS13. It is possible that the inhibitory effect of elevated free plasma hemoglobin on ADAMTS13-mediated proteolysis of UL-VWF and VWF strings in SCD patients^{95,96} might be sufficient to prolong the lifetime of VWF strings long enough to induce vaso-occlusion, but specific analyses that address this contention have not yet been performed. Moreover, it should be considered that ADAMTS13 activity is not decreased in SCD patients⁹⁰ and also the direct binding of sickle cells to VWF strings has not been demonstrated as yet, allowing only speculation to a pathophysiologic role of VWF strings in SCD.

In conclusion, VWF strings remain bound to the surface of endothelial cells in the absence of ADAMTS13, and it is clear that they have intriguing characteristics that distinguish them from normal circulating plasma VWF molecules. Extraordinarily long VWF strings can be observed *in vitro*, although they have not yet

been detected *in vivo*. Although VWF strings have open A1 domains, potentially allowing firm platelet adhesion, such strings rapidly disappear under normal physiologic conditions via cleavage by ADAMTS13. This seems a logical protective process as these strings are probably prothrombotic in nature. The fate of these platelet-decorated VWF strings entering circulation remains to be determined, but a rapid clearance from the circulation might be expected. Elucidation of unsolved questions (eg, why some of the strings bind platelets and others do not, why VWF strings persist under arterial conditions *in vitro* but not *in vivo*, and how VWF strings are anchored to endothelial cells) will further increase our understanding of the unique characteristics of VWF strings. More studies are also needed to unravel the role of VWF strings in different disease pathologies. Although VWF strings are long-lived in *Adams13*^{-/-} mice on stimulation of endothelium, it is currently not known whether strings survive long enough in the presence of ADAMTS13 to participate in processes, such as inflammatory leukocyte adhesion or malaria parasite sequestration.

Since their discovery, explaining the composition, characteristics, and relevance of VWF strings has been a puzzling process. Future research that provides more definitive answers into their biochemical characteristics, and (patho)physiologic roles will undoubtedly add to our understanding of these intriguing features of the vascular system.

Acknowledgments

The authors thank Louis Deforche (IWT 111507) for help with preparation of the figures.

K.D.C. was supported by the Institute for the Promotion of Innovation through Science and Technology in Flanders (PhD grant 83328, IWT Vlaanderen). S.F.D.M. was supported by the Research Foundation Flanders (Fonds voor Wetenschappelijk Onderzoek Vlaanderen; postdoctoral fellowship). Publication and part of the work described here were supported by Fonds voor Wetenschappelijk Onderzoek Vlaanderen (grant G.0607.09).

Authorship

Contribution: K.D.C., S.F.D.M., and K.V. wrote the manuscript.

Conflict-of-interest disclosure: The authors declare no competing financial interests.

Correspondence: Karen Vanhoorelbeke, Laboratory for Thrombosis Research, IRF Life Sciences, KU Leuven, KULAK, E Sabbelaan 53, B-8500 Kortrijk, Belgium; e-mail: karen.vanhoorelbeke@kuleuven-kulak.be.

References

- Dong JF, Moake JL, Nolasco L, et al. ADAMTS-13 rapidly cleaves newly secreted ultralarge von Willebrand factor multimers on the endothelial surface under flowing conditions. *Blood*. 2002;100(12):4033-4039.
- De Meyer SF, Deckmyn H, Vanhoorelbeke K. von Willebrand factor to the rescue. *Blood*. 2009;113(21):5049-5057.
- Sadler JE. Biochemistry and genetics of von Willebrand factor. *Annu Rev Biochem*. 1998;67:395-424.
- Verweij CL, Diergaarde PJ, Hart M, Pannekoek H. Full-length von Willebrand factor (vWF) cDNA encodes a highly repetitive protein considerably larger than the mature vWF subunit. *EMBO J*. 1986;5(8):1839-1847.
- Titani K, Kumar S, Takio K, et al. Amino acid sequence of human von Willebrand factor. *Biochemistry*. 1986;25(11):3171-3184.
- Zhou YF, Eng ET, Zhu J, Lu C, Walz T, Springer TA. Sequence and structure relationships within von Willebrand factor. *Blood*. 2012;120(2):449-458.
- Ulrichs H, Udvardy M, Lenting PJ, et al. Shielding of the A1 domain by the D'D3 domains of von Willebrand factor modulates its interaction with platelet glycoprotein Ib-IX-V. *J Biol Chem*. 2006;281(8):4699-4707.
- Martin C, Morales LD, Cruz MA. Purified A2 domain of von Willebrand factor binds to the active conformation of von Willebrand factor and blocks the interaction with platelet glycoprotein Iba1alpha. *J Thromb Haemost*. 2007;5(7):1363-1370.
- Savage B, Saldivar E, Ruggeri ZM. Initiation of platelet adhesion by arrest onto fibrinogen or translocation on von Willebrand factor. *Cell*. 1996;84(2):289-297.
- Doggett TA, Girdhar G, Lawshé A, et al. Selectin-like kinetics and biomechanics promote rapid platelet adhesion in flow: the GPIb(alpha)-vWF tether bond. *Biophys J*. 2002;83(1):194-205.
- Yago T, Lou J, Wu T, et al. Platelet glycoprotein Iba1alpha forms catch bonds with human WT vWF but not with type 2B von Willebrand disease vWF. *J Clin Invest*. 2008;118(9):3195-3207.
- Kim J, Zhang CZ, Zhang X, Springer TA. A mechanically stabilized receptor-ligand flex-bond important in the vasculature. *Nature*. 2010;466(7309):992-995.
- Fay PJ, Coumans JV, Walker FJ. von Willebrand

- factor mediates protection of factor VIII from activated protein C-catalyzed inactivation. *J Biol Chem*. 1991;266(4):2172-2177.
14. Foster PA, Fulcher CA, Marti T, Titani K, Zimmerman TS. A major factor VIII binding domain resides within the amino-terminal 272 amino acid residues of von Willebrand factor. *J Biol Chem*. 1987;262(18):8443-8446.
 15. Weibel ER, Palade GE. New cytoplasmic components in arterial endothelia. *J Cell Biol*. 1964; 23:101-112.
 16. Cramer EM, Meyer D, le Menn R, Breton-Gorius J. Eccentric localization of von Willebrand factor in an internal structure of platelet alpha-granule resembling that of Weibel-Palade Bodies. *Blood*. 1985; 66(3):710-713.
 17. Valentijn KM, Sadler JE, Valentijn JA, Voorberg J, Eikenboom J. Functional architecture of Weibel-Palade bodies. *Blood*. 2011;117(19):5033-5043.
 18. Springer TA. Biology and physics of von Willebrand factor concatamers. *J Thromb Haemost*. 2011;9(suppl 1):130-143.
 19. Huang RH, Wang Y, Roth R, et al. Assembly of Weibel-Palade body-like tubules from N-terminal domains of von Willebrand factor. *Proc Natl Acad Sci U S A*. 2008;105(2):482-487.
 20. Michaux G, Abbott KB, Collinson LM, Haberichter SL, Norman KE, Cutler DF. The physiological function of von Willebrand's factor depends on its tubular storage in endothelial Weibel-Palade bodies. *Dev Cell*. 2006;10(2):223-232.
 21. Romani de Wit T, Rondaj MG, Hordijk PL, Voorberg J, van Mourik JA. Real-time imaging of the dynamics and secretory behavior of Weibel-Palade bodies. *Arterioscler Thromb Vasc Biol*. 2003;23(5):755-761.
 22. Valentijn KM, van Driel LF, Mourik MJ, et al. Multi-granular exocytosis of Weibel-Palade bodies in vascular endothelial cells. *Blood*. 2010;116(10):1807-1816.
 23. Furlan M. Von Willebrand factor: molecular size and functional activity. *Ann Hematol*. 1996;72(6):341-348.
 24. Arya M, Anvari B, Romo GM, et al. Ultralarge multimers of von Willebrand factor form spontaneous high-strength bonds with the platelet glycoprotein Ib-IX complex: studies using optical tweezers. *Blood*. 2002;99(11):3971-3977.
 25. Hulstain JJ, de Groot PG, Silence K, Veyradier A, Fijnheer R, Lenting PJ. A novel nanobody that detects the gain-of-function phenotype of von Willebrand factor in ADAMTS13 deficiency and von Willebrand disease type 2B. *Blood*. 2005;106(9):3035-3042.
 26. Kumar RA, Moake JL, Nolasco L, et al. Enhanced platelet adhesion and aggregation by endothelial cell-derived unusually large multimers of von Willebrand factor. *Biorheology*. 2006;43(5):681-691.
 27. Levy GG, Nichols WC, Lian EC, et al. Mutations in a member of the ADAMTS gene family cause thrombotic thrombocytopenic purpura. *Nature*. 2001;413(6855):488-494.
 28. Zheng X, Chung D, Takayama TK, Majerus EM, Sadler JE, Fujikawa K. Structure of von Willebrand factor-cleaving protease (ADAMTS13), a metalloprotease involved in thrombotic thrombocytopenic purpura. *J Biol Chem*. 2001;276(44):41059-41063.
 29. Tsai HM. Physiologic cleavage of von Willebrand factor by a plasma protease is dependent on its conformation and requires calcium ion. *Blood*. 1996;87(10):4235-4244.
 30. Furlan M, Robles R, Lammle B. Partial purification and characterization of a protease from human plasma cleaving von Willebrand factor to fragments produced by in vivo proteolysis. *Blood*. 1996;87(10):4223-4234.
 31. Dent JA, Galbusera M, Ruggeri ZM. Heterogeneity of plasma von Willebrand factor multimers resulting from proteolysis of the constituent subunit. *J Clin Invest*. 1991;88(3):774-782.
 32. Zhang Q, Zhou YF, Zhang CZ, Zhang X, Lu C, Springer TA. Structural specializations of A2, a force-sensing domain in the ultralarge vascular protein von Willebrand factor. *Proc Natl Acad Sci U S A*. 2009;106(23):9226-9231.
 33. Sutherland JJ, O'Brien LA, Lillcrap D, Weaver DF. Molecular modeling of the von Willebrand factor A2 domain and the effects of associated type 2A von Willebrand disease mutations. *J Mol Model*. 2004; 10(4):259-270.
 34. Crawley JT, Groot RD, Xiang Y, Luken BM, Lane DA. Unravelling the scissile bond: how ADAMTS13 recognises and cleaves von Willebrand factor. *Blood*. 2011;118(12):3212-3221.
 35. Zhang XH, Halvorsen K, Zhang CZ, Wong WP, Springer TA. Mechanoenzymatic cleavage of the ultralarge vascular protein von Willebrand factor. *Science*. 2009;324(5932):1330-1334.
 36. Moake JL, Rudy CK, Troll JH, et al. Unusually large plasma factor VIII: von Willebrand factor multimers in chronic relapsing thrombotic thrombocytopenic purpura. *N Engl J Med*. 1982; 307(23):1432-1435.
 37. Tsai HM. Pathophysiology of thrombotic thrombocytopenic purpura. *Int J Hematol*. 2010;91(1):1-19.
 38. Tsai HM, Lian EC. Antibodies to von Willebrand factor-cleaving protease in acute thrombotic thrombocytopenic purpura. *N Engl J Med*. 1998; 339(22):1585-1594.
 39. Andre P, Denis CV, Ware J, et al. Platelets adhere to and translocate on von Willebrand factor presented by endothelium in stimulated veins. *Blood*. 2000;96(10):3322-3328.
 40. Wang JW, Valentijn JA, Valentijn KM, et al. Formation of platelet binding von Willebrand factor strings on non-endothelial cells. *J Thromb Haemost*. 2012;10(10):2168-2178.
 41. Motto DG, Chauhan AK, Zhu G, et al. Shiga toxin triggers thrombotic thrombocytopenic purpura in genetically susceptible ADAMTS13-deficient mice. *J Clin Invest*. 2005;115(10):2752-2761.
 42. De Maeyer B, De Meyer SF, Feys HB, et al. The distal carboxyterminal domains of murine ADAMTS13 influence proteolysis of platelet-decorated VWF strings in vivo. *J Thromb Haemost*. 2010;8(10):2305-2312.
 43. De Ceunynck K, Rocha S, Feys HB, et al. Local elongation of endothelial cell anchored von Willebrand factor strings precedes ADAMTS13 mediated proteolysis. *J Biol Chem*. 2011;286(42):36361-36367.
 44. Fowler WE, Fretto LJ, Hamilton KK, Erickson HP, McKee PA. Substructure of human von Willebrand factor. *J Clin Invest*. 1985;76(4):1491-1500.
 45. Huang J, Roth R, Heuser JE, Sadler JE. Integrin alpha(v) beta(3) on human endothelial cells binds von Willebrand factor strings under fluid shear stress. *Blood*. 2009;113(7):1589-1597.
 46. Choi H, Aboufatwa K, Pownall HJ, Cook R, Dong JF. Shear-induced disulfide bond formation regulates adhesion activity of von Willebrand factor. *J Biol Chem*. 2007;282(49):35604-35611.
 47. Li Y, Choi H, Zhou Z, et al. Covalent regulation of ULVWF string formation and elongation on endothelial cells under flow conditions. *J Thromb Haemost*. 2008;6(7):1135-1143.
 48. Schneider SW, Nuschele S, Wixforth A, et al. Shear-induced unfolding triggers adhesion of von Willebrand factor fibers. *Proc Natl Acad Sci U S A*. 2007;104(19):7899-7903.
 49. Rybaltowski M, Suzuki Y, Mogami H, et al. In vivo imaging analysis of the interaction between unusually large von Willebrand factor multimers and platelets on the surface of vascular wall. *Pflugers Arch*. 2011;461(6):623-633.
 50. Siedlecki CA, Lestini BJ, Kottke-Marchant KK, Eppell SJ, Wilson DL, Marchant RE. Shear-dependent changes in the three-dimensional structure of human von Willebrand factor. *Blood*. 1996;88(8):2939-2950.
 51. Bernardo A, Ball C, Nolasco L, Choi H, Moake JL, Dong JF. Platelets adhered to endothelial cell-bound ultra-large von Willebrand factor strings support leukocyte tethering and rolling under high shear stress. *J Thromb Haemost*. 2005;3(3):562-570.
 52. Zannettino AC, Holding CA, Diamond P, et al. Osteoprotegerin (OPG) is localized to the Weibel-Palade bodies of human vascular endothelial cells and is physically associated with von Willebrand factor. *J Cell Physiol*. 2005;204(2):714-723.
 53. Shahbazi S, Lenting PJ, Fribourg C, Terraube V, Denis CV, Christophe OD. Characterization of the interaction between von Willebrand factor and osteoprotegerin. *J Thromb Haemost*. 2007;5(9):1956-1962.
 54. McKinnon T, Nowak A, Edirickrema K, Laffan M. The interaction of von Willebrand factor with angiopoietins-1 and 2 [abstract]. *J Thromb Haemost*. 2011;9(Suppl 2):198. Abstract P-MO-450.
 55. Saint-Lu N, Oortwijn BD, Pegon JN, et al. Identification of galectin-1 and galectin-3 as novel partners for von Willebrand factor. *Arterioscler Thromb Vasc Biol*. 2012;32(4):894-901.
 56. Hulstain JJ, Lenting PJ, de Laat LB, Derksen RH, Fijnheer R, de Groot PG. β 2-Glycoprotein I inhibits von Willebrand factor dependent platelet adhesion and aggregation. *Blood*. 2007;110(5):1483-1491.
 57. Padilla A, Moake JL, Bernardo A, et al. P-selectin anchors newly released ultralarge von Willebrand factor multimers to the endothelial cell surface. *Blood*. 2004;103(6):2150-2156.
 58. Chauhan AK, Goerge T, Schneider SW, Wagner DD. Formation of platelet strings and microthrombi in the presence of ADAMTS-13 inhibitor does not require P-selectin or beta(3) integrin. *J Thromb Haemost*. 2007;5(3):583-589.
 59. Chauhan AK, Motto DG, Lamb CB, et al. Systemic antithrombotic effects of ADAMTS13. *J Exp Med*. 2006;203(3):767-776.
 60. Tsai HM, Sussman II, Nagel RL. Shear stress enhances the proteolysis of von Willebrand factor in normal plasma. *Blood*. 1994;83(8):2171-2179.
 61. Shim K, Anderson PJ, Tuley EA, Wiswall E, Sadler JE. Platelet-VWF complexes are preferred substrates of ADAMTS13 under fluid shear stress. *Blood*. 2008;111(2):651-657.
 62. Turner N, Nolasco L, Dong JF, Moake J. ADAMTS-13 cleaves long von Willebrand factor multimeric strings anchored to endothelial cells in the absence of flow, platelets or conformation-altering chemicals. *J Thromb Haemost*. 2009;7(1):229-232.
 63. Bonnefoy A, Daenens K, Feys HB, et al. Thrombospondin-1 controls vascular platelet recruitment and thrombus adherence in mice by protecting (sub)endothelial VWF from cleavage by ADAMTS13. *Blood*. 2006;107(3):955-964.
 64. Wang A, Liu F, Dong N, et al. Thrombospondin-1 and ADAMTS13 competitively bind to VWF A2 and A3 domains in vitro. *Thromb Res*. 2010; 126(4):e260-e265.
 65. Jin SY, Skipwith CG, Shang D, Zheng XL. von Willebrand factor cleaved from endothelial cells by ADAMTS13 remains ultralarge in size. *J Thromb Haemost*. 2009;7(10):1749-1752.
 66. Tsai HM, Nagel RL, Hatcher VB, Sussman II. Endothelial cell-derived high molecular weight von Willebrand factor is converted into the plasma multimer pattern by granulocyte proteases. *Biochem Biophys Res Commun*. 1989;158(3):980-985.
 67. Jelenska M, Kopec M, Sopata I, Vigh Z, Scharrer I, Breddin K. Fibrinogen does not protect von Willebrand factor against proteolysis by human cathepsin G. *Thromb Res*. 1991;61(5):433-440.
 68. Berkowitz SD, Nozaki H, Titani K, Murachi T, Plow EF, Zimmerman TS. Evidence that calpains

- and elastase do not produce the von Willebrand factor fragments present in normal plasma and IIA von Willebrand disease. *Blood*. 1988;72(2):721-727.
69. Raife TJ, Cao WJ, Atkinson BS, et al. Leukocyte proteases cleave von Willebrand factor at or near the ADAMTS13 cleavage site. *Blood*. 2009;114(8):1666-1674.
 70. Buzza MS, Dyson JM, Choi H, et al. Antihemostatic activity of human granzyme B mediated by cleavage of von Willebrand factor. *J Biol Chem*. 2008;283(33):22498-22504.
 71. De Meyer SF, Budde U, Deckmyn H, Vanhoorelbeke K. In vivo von Willebrand factor size heterogeneity in spite of the clinical deficiency of ADAMTS-13. *J Thromb Haemost*. 2011;9(12):2506-2508.
 72. Banno F, Kokame K, Okuda T, et al. Complete deficiency in ADAMTS13 is prothrombotic, but it alone is not sufficient to cause thrombotic thrombocytopenic purpura. *Blood*. 2006;107(8):3161-3166.
 73. Feys HB, Roodt J, Vandeputte N, et al. Thrombotic thrombocytopenic purpura directly linked with ADAMTS13 inhibition in the baboon (*Papio ursinus*). *Blood*. 2010;116(12):2005-2010.
 74. De Meyer SF, De Maeyer B, Deckmyn H, Vanhoorelbeke K. von Willebrand factor: drug and drug target. *Cardiovasc Hematol Disord Drug Targets*. 2009;9(1):9-20.
 75. Brill A, Fuchs TA, Chauhan AK, et al. von Willebrand factor-mediated platelet adhesion is critical for deep vein thrombosis in mouse models. *Blood*. 2011;117(4):1400-1407.
 76. Chauhan AK, Kisucka J, Brill A, Walsh MT, Scheiflinger F, Wagner DD. ADAMTS13: a new link between thrombosis and inflammation. *J Exp Med*. 2008;205(9):2065-2074.
 77. De Meyer SF, Savchenko AS, Haas MS, et al. Protective anti-inflammatory effect of ADAMTS13 on myocardial ischemia/reperfusion injury in mice [published online ahead of print August 22, 2012]. *Blood*. doi:10.1182/blood-2012-06-439935.
 78. Gandhi C, Motto DG, Jensen M, Lentz SR, Chauhan AK. ADAMTS13 deficiency exacerbates VWF-dependent acute myocardial ischemia/reperfusion injury in mice [published online ahead of print September 14, 2012]. *Blood*. doi:10.1182/blood-2012-06-440255.
 79. Andersson HM, Siegerink B, Luken BM, et al. High VWF, low ADAMTS13, and oral contraceptives increase the risk of ischemic stroke and myocardial infarction in young women. *Blood*. 2012;119(6):1555-1560.
 80. Morioka C, Uemura M, Matsuyama T, et al. Plasma ADAMTS13 activity parallels the APACHE II score, reflecting an early prognostic indicator for patients with severe acute pancreatitis. *Scand J Gastroenterol*. 2008;43(11):1387-1396.
 81. Kremer Hovinga JA, Zeerleder S, Kessler P, et al. ADAMTS-13, von Willebrand factor and related parameters in severe sepsis and septic shock. *J Thromb Haemost*. 2007;5(11):2284-2290.
 82. Nguyen TC, Liu A, Liu L, et al. Acquired ADAMTS-13 deficiency in pediatric patients with severe sepsis. *Haematologica*. 2007;92(1):121-124.
 83. Martin K, Borgel D, Lerolle N, et al. Decreased ADAMTS-13 (A disintegrin-like and metalloprotease with thrombospondin type 1 repeats) is associated with a poor prognosis in sepsis-induced organ failure. *Crit Care Med*. 2007;35(10):2375-2382.
 84. Ono T, Mimuro J, Madoiwa S, et al. Severe secondary deficiency of von Willebrand factor-cleaving protease (ADAMTS13) in patients with sepsis-induced disseminated intravascular coagulation: its correlation with development of renal failure. *Blood*. 2006;107(2):528-534.
 85. Craig A, Scherf A. Molecules on the surface of the *Plasmodium falciparum* infected erythrocyte and their role in malaria pathogenesis and immune evasion. *Mol Biochem Parasitol*. 2001;115(2):129-143.
 86. Bridges DJ, Bunn J, van Mourik JA, et al. Rapid activation of endothelial cells enables *Plasmodium falciparum* adhesion to platelet-decorated von Willebrand factor strings. *Blood*. 2010;115(7):1472-1474.
 87. Hollestelle MJ, Donkor C, Mantey EA, et al. von Willebrand factor propeptide in malaria: evidence of acute endothelial cell activation. *Br J Haematol*. 2006;133(5):562-569.
 88. de Mast Q, Groot E, Lenting PJ, et al. Thrombocytopenia and release of activated von Willebrand factor during early *Plasmodium falciparum* malaria. *J Infect Dis*. 2007;196(4):622-628.
 89. Larkin D, de Laat B, Jenkins PV, et al. Severe *Plasmodium falciparum* malaria is associated with circulating ultra-large von Willebrand multimers and ADAMTS13 inhibition. *PLoS Pathog*. 2009;5(3):e1000349.
 90. Schnog JJ, Hovinga JA, Krieg S, et al. ADAMTS13 activity in sickle cell disease. *Am J Hematol*. 2006;81(7):492-498.
 91. Krishnan S, Siegel J, Pullen G Jr, Hevelow M, Dampier C, Stuart M. Increased von Willebrand factor antigen and high molecular weight multimers in sickle cell disease associated with nocturnal hypoxemia. *Thromb Res*. 2008;122(4):455-458.
 92. Wick TM, Moake JL, Udden MM, McIntire LV. Unusually large von Willebrand factor multimers preferentially promote young sickle and nonsickle erythrocyte adhesion to endothelial cells. *Am J Hematol*. 1993;42(3):284-292.
 93. Kaul DK, Nagel RL, Chen D, Tsai HM. Sick cell erythrocyte-endothelial interactions in microcirculation: the role of von Willebrand factor and implications for vasoocclusion. *Blood*. 1993;81(9):2429-2438.
 94. Chen J, Hobbs WE, Le J, Lenting PJ, de Groot PG, López JA. The rate of hemolysis in sickle cell disease correlates with the quantity of active von Willebrand factor in the plasma. *Blood*. 2011;117(13):3680-3683.
 95. Zhou Z, Han H, Cruz MA, López JA, Dong JF, Guchait P. Haemoglobin blocks von Willebrand factor proteolysis by ADAMTS-13: a mechanism associated with sickle cell disease. *Thromb Haemost*. 2009;101(6):1070-1077.
 96. Zhou Z, Yee DL, Guchait P. Molecular link between intravascular hemolysis and vascular occlusion in sickle cell disease. *Curr Vasc Pharmacol*. 2012;10(6):756-761.