

Follicular lymphoma and the immune system: from pathogenesis to antibody therapy

Freda K. Stevenson¹ and George T. Stevenson¹

¹Molecular Immunology Group, Cancer Sciences Academic Unit, University of Southampton Faculty of Medicine, Southampton General Hospital, Southampton, United Kingdom

Follicular lymphoma (FL) is a B-cell tumor arising in germinal centers and retaining features of its normal B-cell counterpart. Lymphomagenesis appears stepwise from the t(14;18) translocation, through FL-like cells, to FL in situ, then to overt FL. Surface Ig is mandatory and carries a striking V-region modification because of introduction of glycan addition sites during somatic mutation. These are positively selected and acquire unusual high mannoses, which interact with lectins.

The Ig-associated mannoses appear essential for FL, providing a disease-specific target for antibody attack. Antibody therapy is currently focused on anti-CD20 (rituximab), which appears to rely predominantly on the Fc γ module recruiting suitably activated macrophages. Immunoglobulin and, to some extent, CD20, can each escape antibody attack in vitro by modulation, but this is difficult to demonstrate clinically. Instead, studies of anti-CD20 therapy of FL suggest that ef-

factor modulation, similar to that seen in the suppression of autoimmune inflammation by infusions of normal human IgG, may be important. Both antigenic and effector modulations might be minimized by repeated small doses of more potent antibodies. Clearly, mechanisms of attack vary with the malignancy, the target molecule, and the antibody design, offering opportunities for optimizing this promising strategy. (*Blood*. 2012;119(16): 3659-3667)

Introduction

Antibody is now a major contributor to the treatment of B-cell malignancies. However, there remains a pressing need to understand better how to encourage the destruction of antibody-coated neoplastic cells. We direct our attention to human follicular lymphoma (FL), to its pathogenesis and a therapeutic opportunity this reveals. We focus on 2 of its cell-surface antigens: first, the key receptor of B cells, surface immunoglobulin (Ig), which has a renewed target potential; and second, an established target, CD20. Antibodies against each molecule are clinically effective but may differ in the mechanism of killing. They differ in susceptibility to endocytosis/modulation after engagement by antibody and illustrate the need to understand the behavior of the target molecule to optimize strategies for attack.

B cells undergoing potentially dangerous genetic recombination and somatic mutational processes¹ and reveal the price to be paid for the production of high-affinity antibody. Fortunately, they represent only one step in lymphomagenesis; and, in the case of t(14;18), the “seed” cells can proceed through maturation and exit the GC without necessarily generating FL.²

Subsequent steps to FL are less clear, although pathologists do occasionally detect BCL2-positive FL, termed FL in situ (FLIS), as an incidental finding in reactive lymph nodes.³ Because FLIS shows a very low rate of progression, it may represent a stage en route to fully developed lymphoma. FL is therefore a spectrum of disease stages, ranging from FLIS to “overt” FL, the latter divided into clinical stages based on the relative proportion of centrocyte- and centroblast-like cells. FL appears to evolve along complex progression pathways,⁴ with diffuse areas of growth coexisting with follicular structures. In some cases, transformation to diffuse large B-cell lymphoma occurs.⁵⁻⁷ Genome sequencing is revealing mutational events in a proportion of cases of FL, with several located in histone-modifying genes.⁸ It will be of interest to determine whether these are present in early disease and might therefore contribute to lymphomagenesis.

Development of FL

FL occupies the immune system, surviving and proliferating mainly in the germinal centers (GCs) of lymph nodes. The architecture of normal GCs tends to be retained, with lymphoma cells located in a network of follicular dendritic cells, follicular CD4⁺ T cells, and stromal elements. For normal B cells, GCs are the sites where Darwinian evolution occurs with binding to antigen being the positive selector and death awaiting nonselected B cells. To persist in this hostile environment, FL cells need to escape the default death pathways. One protective factor evident in the majority of cases is the up-regulated expression of the antiapoptotic BCL2 protein via the t(14;18)(q32;q21) translocation. The translocation appears to occur principally as an error during Ig VDJ recombination in the bone marrow, which places the *BCL2* proto-oncogene under the control of the IgH enhancers on the nonexpressed IgH allele. Perhaps not surprisingly, translocational errors are relatively common in normal

Importance of surface Ig

One feature of normal B cells that is maintained by FL cells is the expression of surface Ig (sIg). This is despite the loss of one IgH allele by translocation and potential damage to the functional allele by somatic mutation. It indicates an essential function for the B-cell receptor, expected for normal B cells⁹ but apparently also required for FL cells. Targeting this molecule is attractive and might explain

Submitted November 22, 2011; accepted February 2, 2012. Prepublished online as *Blood* First Edition paper, February 15, 2012; DOI 10.1182/blood-2011-11-367730.

The online version of this article contains a data supplement.

© 2012 by The American Society of Hematology

the efficacy of anti-idiotypic (Id) antibody as a treatment for FL.¹⁰ The logistical challenges of making individual anti-Id antibodies has so far inhibited this promising approach. However, our recent finding that there is a lymphoma-specific modification of sIg in FL may reopen this strategy. It appears that lymphomas of the GC acquire sequence motifs in the Ig variable regions for glycan addition.¹¹ The motifs are introduced during somatic mutation and the glycans added are unusual.¹² Not only does this raise intriguing questions about the role of the glycans in the lifestyle of FL, but it exposes a possible Achilles heel. Targeting the lymphoma-specific glycans with a single antibody could offer an intriguing and feasible way of attacking sIg without having to make individual anti-Id antibodies.

Approaches to antibody therapy

FL is clearly vulnerable to antibody therapy. Active vaccination against Id has long been attractive¹³ and has clinical effects¹⁴⁻¹⁶ but faces the problem of inducing variable immunity in a damaged setting. Passive antibody can be manufactured and injected under controlled conditions and is clearly capable of penetrating FL sites.¹⁷ Anti-CD20 has shown great success, especially in concert with chemotherapy.¹⁸

In general, antibody therapy operates by one or more of 3 mechanisms: direct cytotoxicity caused by engagement of the target-cell surface, recruitment of antibody-dependent cellular cytotoxicity (ADCC), and activation of complement. In contrast to attacks on surface Ig of FL,¹⁹ there is inconsistent evidence for direct cytotoxicity in anti-CD20 therapy, although it possibly has a role under certain circumstances²⁰ and with some antibodies.²¹ Strong evidence from mouse models, supported by clinical observations, suggests that the major mechanism killing anti-CD20-coated FL cells is ADCC effected by macrophages. We discuss this later. An activated complement cascade, unlikely by itself to cause significant lysis of target cells,²² could be important in promoting macrophage activity.²³

Antibodies could be improved to exploit current knowledge, but we are impeded by the complexities of antigenic and effector modulation. We think that these problems should be approached with knowledge gained from animal models tempered by invaluable clinical experience.^{10,24}

This perspective aims to bring together new concepts relating to the pathogenesis of FL, refocusing on the critical Ig receptor. Targeting sIg with new antibodies would be attractive, and increased understanding antibody-mediated mechanisms of elimination should allow refinement of the present therapeutic strategies.

Surface Ig in FL

The IgV genes of the majority of FL cases have undergone somatic hypermutation (SHM), which apparently continues after transformation, generating intraclonal variants with some differences in mutational patterns. Although SHM can introduce potentially dangerous aberrant mutations in non-Ig genes, such as SOCS-1,²⁵ this phenomenon appears to be relatively uncommon in FL. Even without further detectable genetic abnormalities, the GC stage of FL appears to have acquired lymphomagenic properties, with no evidence for a pre-GC stem cell.²⁶ However, the route to FL is not completely fixed because occasional codevelopment of other clonally related lymphomas, such as Hodgkin disease, can occur.²⁷

The majority of FL cases express sIgM(D), with an estimated 20% to 30% having undergone isotype switch to IgG or IgA. In the absence of a large study, this figure remains uncertain. The level of SHM, which is high overall, tends to be relatively higher in isotype-switched cases, reflecting the pattern in normal post-GC B cells.²⁸ Despite the intraclonal variation in SHM evident within FL clones, and, in some cases, the presence of activation-induced cytidine deaminase, there is no apparent increase in mutational load over time but rather an expansion or contraction of subclones.²⁸ The picture of FL is of a GC B cell with up-regulated BCL2 largely arrested in a site where normal B cells, or early FL-like B cells with the same translocation, do not linger. Although FL cells have some ability to circulate and spread to other lymphoid sites,² the question is how the majority are retained in the GC, and how these sIg-expressing cells are able to subvert microenvironmental influences for their own advantage.

Modification of sIg variable region sequences in GC-derived lymphomas

The distinguishing structural feature of the Ig of FL cells is the presence of sequence motifs in the IgV regions, which act as acceptor sites for N-addition of glycan chains.¹¹ The motifs, introduced by SHM and found in virtually all cases, are Asn-X-Ser/Thr (N-X-S/T), where X can be almost any amino acid except proline. As shown in supplemental Figure 1 (available on the *Blood* Web site; see the Supplemental Materials link at the top of the online article), 1 or more can be detected in IGHV sequences of FL, often in CDR2, with others found in IGLV.¹¹ Motifs are also found in other GC-derived lymphomas, such as endemic Burkitt lymphoma, and in a proportion of diffuse large B-cell lymphoma.^{11,29} Because they are rare in normal B cells, in myeloma, and in the mutated subset of chronic lymphocytic leukemia, this modification appears to characteristic of GC-located tumors. Presumably, SHM generates similar sites in all V genes, regardless of the cell of origin; therefore, their presence in GC-derived lymphomas probably reflects positive selection. Negative selection in normal B cells is an alternative possibility, but this argument would have to apply to sIg-negative myeloma and to nonfunctional V genes, making it less likely. In contrast, the importance of the motifs for FL cells is underlined by their conservation during ongoing somatic mutation.³⁰

Unusual nature and function of the IgV-region glycan

As expected, glycans are added to the motifs *in vitro*, confirming functionality¹² and, importantly, are present on the sIg of FL cells.³¹ An unexpected finding was that the added glycans differ from those typical of cell surface glycoproteins, in not acquiring branched sugars but being limited to high mannose.¹² Perhaps because of steric hindrance in the V region, further sugars are not added, leaving mannosylated glycan exposed in the FL antigen-binding sites. We speculated that this might allow sIg of FL to interact with lectins in the GC.

C-type (Ca²⁺-dependent) lectins are pattern recognition receptors, which bind to glycans expressed by pathogens. Lectin-glycan binding is also important in endogenous cell-cell interactions, including those within the immune system involved in cell adhesion, trafficking, and in antibody-mediated functions.³² During B-cell development, an N-linked glycosylation site in the first

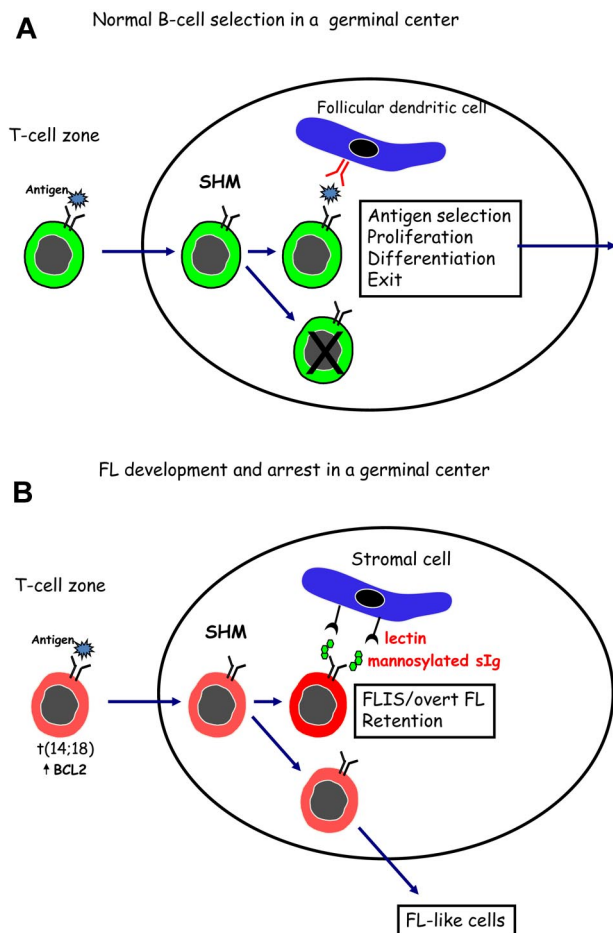


Figure 1. Surface Ig-mediated events occurring in normal B cells or in FL B cells after entry into the GC. (A) Normal B cells encounter antigen in the T-cell zone and then locate in a GC where SHM, antigen selection, and isotype switching occur. Antigen, held as immune complexes on follicular dendritic cells, selects B cells of appropriate affinity. After interaction with specific T cells, selected B cells proliferate and differentiate before leaving the site to develop into memory B cells or plasma cells. (B) B cells that have undergone the t(14;18) translocation can respond to antigen and undergo SHM in a GC. Introduced N-glycosylation motifs in the Ig variable regions are positively selected by FL cells. Interaction of the added mannoses with lectins can occur and might provide a foundation for development of FLIS or overt FL in the GC site. B cells that do not acquire N-glycosylation motifs can exit, and possibly revisit, the GC.

constant region of the μ -chain is an absolute requirement for a functional pre-B cell receptor.³³ Glycan modification of B- and T-cell receptors occurs in the Golgi apparatus by transferase-mediated linkage of terminal sugars. Interestingly, blockage of this step in T cells has been shown to increase clustering of the T-cell receptor at the cell surface, apparently because of release from a galectin-3 lattice.³² The consequent lowering of the threshold of activation is one example of control exerted by lectins on lymphocyte function. Modulation of B-cell receptor activity is already known to involve lectin properties of CD22, an inhibitor of B-cell activation, whose function is controlled by binding to specific sialic acid-terminating glycans.³⁴

We approached the question of interaction between sIg-expressed mannoses and lectins by showing that the candidate lectins, mannose-binding lectin and DC-SIGN, could bind to FL-derived mannosylated Ig in vitro. More significantly, the lectins also bound to primary FL cells and signaled via sIg leading to a rise in intracellular Ca^{2+} .³¹ No signal was mediated in normal B cells, although both normal B and FL cells could signal equally well with

anti-IgM. In terms of potential lectin-bearing cells in the GC, we demonstrated that monocyte-derived dendritic cells could bind to mannosylated FL Ig via DC-SIGN (dendritic cell-specific ICAM-3-grabbing nonintegrin), CD209.³¹ Thus, a hypothetical bridge could be constructed between a lectin-expressing stromal cell and an FL cell that would signal via the mannosylated sIg.

Figure 1 indicates a possible way in which FL cells might subvert the process of antigen selection, which occurs during normal B-cell development in the GC. In Figure 1A, normal B cells are shown undergoing SHM in the dark zone of the GC. Antigen, held as immune complexes on follicular dendritic cells, then selects B cells with higher affinity for interaction with $CD4^+$ T cells, followed by proliferation, differentiation, and exit. Although it is likely that a conventional antigen could stimulate B cells with t(14;18), this would not permit long-term residence in a hostile site. To rescue FL cells and allow persistence in the GC, an alternative driver able to stimulate the B-cell receptor of all FL cases, is proposed. This could involve a lectin-mannosylated sIg interaction (Figure 1B) and may be the reason for retention of signal-competent sIg by FL cells.

Signaling via sIg is clearly a critical influence on the behavior of FL cells.³⁵ Analysis of sIg-mediated signaling in vitro has revealed that most FL cells have functional pathways. However, a subset of the FL clone exists in some patients with apparently down-regulated membrane proximal signaling pathways, presumably after events in vivo. Down-regulation was linked to a reduced expression of CD20 and was reversible after inhibition of negative regulators. Interestingly, the proportion of FL cells with these features was associated with a poorer prognosis, suggesting that the number of cells that have undergone B-cell receptor signaling in vivo may be an indicator of lymphoma progression and of resistance to therapy.³⁵ One possibility is that the signal in vivo results from the lectin-mannosylated sIg bridge.

Candidate lectin-expressing stromal cells

If sIg signaling is mediated via a lectin in the GC, we speculate as to which cells express relevant lectins. Candidates include macrophages, dendritic cells, and follicular dendritic cells. Although, as for other tumors,³⁶ stromal cells probably contribute multiple factors to support FL cells, direct interaction with sIg may be a novel lymphoma-specific pathway. An interesting insight from solid tumors is that mannose receptors are up-regulated on tumor-associated macrophages, and that binding to partner glycans leads to an M2 profile with an increase in IL-10 and a decrease in the Th1-attracting chemokine CCL3.³⁶ This situation may be mirrored in FL where increased levels of IL-4 would indicate a predominance of Th2 cells.³⁷

For FL, initial gene expression profiling implicated genes associated with macrophages and dendritic cells as a bad prognostic factor.³⁸ Because these are lectin-expressing cells, this could be advantageous for FL cells. However, further profiling data added complexity to the links between macrophages and prognosis.³⁹ Similar complexity surrounds the role of T-cell infiltration, initially considered to be a good prognostic factor.³⁸ Surprisingly, this appears to be the case for FOXP3⁺ Treg,⁴⁰ but the impact of other T-cell subsets remains controversial.³⁹ Perhaps this is inevitable given that prognosis includes both pathogenesis and response to treatment, and the factors influencing each might be operating in different directions. More immunohistochemical data on the nature

and maturational status of the candidate stromal cells, and on T-cell subsets, in early untreated FL are clearly required.³⁹

Antibody attack on sIg

The ability of anti-Id antibodies to suppress FL is well documented.¹⁰ Indeed, the only way a patient's FL clone could "hide" from injected mAb was by outgrowth of an Id-negative sIg-positive variant,⁴¹ demonstrating both efficacy of the single-mouse mAb in FL and the need for retention of sIg. Because of technical challenges in raising anti-Id antibodies, the approach of active vaccination was developed. It soon became clear both from models and from clinical data in FL that, although T-cell responses are induced and can act as effectors,⁴² the main mediator of protection induced by Id vaccination is antibody.^{43,44} Direct apoptosis mediated via sIg signal transduction⁴⁵ may be one component of this.¹⁹

For normal GC B cells, survival is dictated by the strength of interaction with antigen located on follicular dendritic cells, with the subsequent processes of terminal differentiation or recycling ability dependent on CD4⁺ T cells.⁴⁶ Our studies have shown that, in the absence of T-cell help, memory B cells are highly susceptible to antigen-induced death in vivo with escape only possible for low-affinity B cells.⁴⁷ We do not yet know how FL cells might gain sustenance, and not death, via interaction of sIg with local lectin-bearing cells, but this again could reflect a low affinity. If this is the case for FL, engaging sIg with high affinity anti-Id or antimannosylated sIg could provide effective therapy. An alternative approach would be to develop a blocking nonagonistic antibody, which would interrupt the sustaining interaction and possibly detach the FL cells from their protective niche.

Antibodies against the common mannosylated sites expressed by sIg of FL may therefore mediate direct killing supplemented by indirect attack similar to that mediated by anti-CD20. Fortunately, antibodies against mannoses are being actively raised in a different context by investigators in the field of HIV. This virus expresses a shield of host-derived oligomannose glycans, which protect the envelope protein gp120 from antibody recognition.⁴⁸ Raising antimannose neutralizing antibodies that penetrate this shield is the goal, and such antibodies could have relevance for FL.

Effectors killing antibody-coated tumor cells

After the importance of ADCC in killing antibody-coated tumor cells had been long suspected,⁴⁹ decisive papers^{22,50,51} appeared confirming this and identifying macrophages as the probable major effectors. In a variety of tumor models in genetically manipulated mice, antibody therapy was found to require activating FcγR and was enhanced by absence of the inhibitory FcγRIIB.⁵¹

Among candidate cells mediating ADCC are macrophages, granulocytes, dendritic cells, NK cells, and some γδ T cells.⁵² All express activating FcγR, but only macrophages, granulocytes, and dendritic cells express inhibitory FcγRIIB. Three pieces of evidence favor macrophages as the predominant effectors: the heightened therapeutic effect of antitumor antibodies in FcγRIIB^{-/-} mice,⁵¹ the role of monocytes/macrophages in depleting normal B lymphocytes in mice injected with mouse anti-CD20 antibody,⁵³⁻⁵⁵ and the ubiquity of macrophages, including their predominance among cells infiltrating human tumors.⁵⁶ Mechanisms used by the macrophages remain undetermined. Synapses between macrophages and tumor targets in mice were reported to be

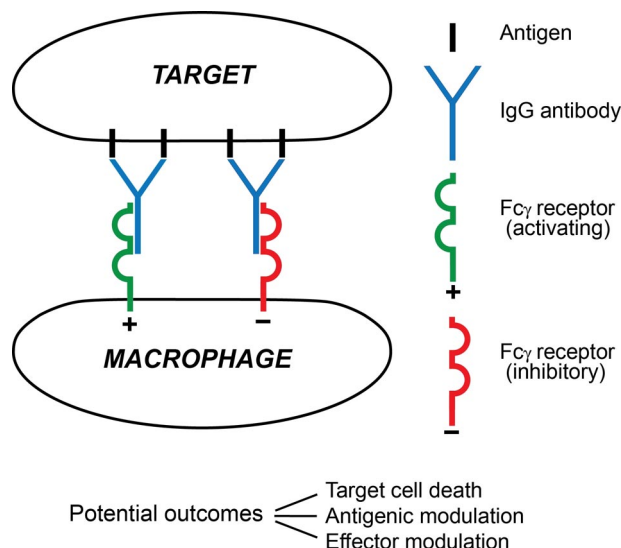


Figure 2. A synapse between an antibody-coated target cell and a macrophage effector. In this minimal depiction 4 surface antigen molecules are engaged by 2 IgG antibody molecules. One has docked with an activating FcγR (typically FcγRIIA), the other with an inhibitory FcγR (FcγRIIB), on the surface of the effector. Three possible major outcomes between the cells are listed. Among major determinants of outcome are the extents of signaling from each FcγR and the prevailing mediator environment. The 3 outcomes are not mutually exclusive, for example, the target cell might die despite extensive antigenic modulation, and the encounter will influence effector modulation by altering the local mediator environment. Much remains to be learned about this type of synapse.

multifocal, involving accumulated actin, FcγR, and phosphotyrosines. No phagocytosis was reported.⁵⁷

The role of ADCC in the response of FL to rituximab was investigated by determining in a group of patients the allotype of FcγRIIIA, the FcγRIII species located on monocytes/macrophages and NK cells.⁵⁸ The 158V allotype has a higher affinity for IgG1 and mediates ADCC better than the alternative 158F. Superior response rates were seen in V/V compared with V/F or F/F subjects, a finding consistent with a major role for macrophage-mediated ADCC. The finding was soon confirmed.⁵⁹

A macrophage attack on an antibody-coated tumor cell and the major sequelae visualized in this paper are summarized in Figure 2.

To investigate the role of complement in rituximab-treated FL, a correlation was sought⁶⁰ between tumor responses and expression by target cells of the complement inhibitors CD46, CD55, and CD59. No correlation was found. However, without directly causing lysis, an activated complement cascade could usefully promote macrophage ADCC, as shown by the anaphylatoxin C5a increasing the ratio of activating to inhibitory FcγR on macrophages.²³ ADCC mediated by NK cells can actually be impeded by complement-derived C3b on the target-cell surface.⁶¹ It is doubtful that this would apply to ADCC mediated by macrophages, which, unlike NK cells, possess surface receptors for C3b.

Antigenic modulation

Antigenic modulation is the disappearance from a cell surface of an antigen under immunologic attack. It was first reported⁶² in 1963 for mouse thymus leukemia (TL) antigens belonging to the MHC class Ib family. Leukemia cells bearing TL were seen to survive passaging in hosts displaying anti-TL antibody from a previous immunization. Recovered cells were apparently TL-negative as judged by resistance to lysis by anti-TL antibody and

complement but regained positivity when repassaged in the absence of antibody. It was later shown that the initial exposure to an antibody led to rapid movement of surface antibody-antigen complexes to form patches and caps, from both of which endocytosis occurred.⁶³ Sparseness of modulated surface Ig was seen to be prolonged by a diminished delivery of newly synthesized molecules to the surface.⁶⁴

Recently, it has been recognized that much of the removal of immune complexes in antigenic modulation might in some cases be accomplished by trogocytosis,⁶⁵ implying the nibbling off of immune complexes by phagocytes attached to them via their Fc receptors.⁶⁶ This could be followed by the phagocyte endocytosing the immune complexes plus Fc receptors, leading to appreciable loss of receptors from the phagocytic surface. Unfortunately, trogocytosis is difficult to observe *in vivo*, but there is good evidence for its occurrence.^{67,68}

Modulation of surface Ig

Some variables involved in antigenic modulation are illustrated by surface IgM on B lymphocytes. Polyclonal anti-Ig *in vitro* led to most of the surface Ig on normal mouse B lymphocytes being endocytosed after 10 minutes at 37°C, and this was even faster for guinea-pig leukemic B lymphocytes.^{69,70} Subsequent experiments with monoclonal anti-Id IgG antibodies yielded slower modulation than with polyclonal anti-Id. But *in vivo*, modulation by monoclonal anti-Id became comparable in speed with that given by polyclonal preparations (with some uncertainty because of heavy sequestration of cells from the blood). This increase was apparently the result of interactions involving the antibody Fc γ , as it was not seen in the slow modulation induced by antibody F(ab' γ)₂.⁷¹ Whether the faster modulation *in vivo* is the result of interaction with Fc γ receptors providing a signal to the antibody-coated cell, or to a large degree of trogocytosis, is difficult to determine and could vary.

Indirect evidence of antigenic modulation impeding anti-Id therapy was obtained on comparing bivalent (IgG) and univalent (Fab/c) polyclonal anti-Id reagents in treating a guinea-pig leukemia.⁷² The univalent reagent will not induce modulation by crosslinking but is expected to do so, at a rate slower than the bivalent, on interaction with Fc γ receptors.⁷¹ A much better therapy achieved by the univalent reagent suggested an important role for antigenic modulation in impeding anti-Id killing of cells in this model.

The Stanford experience of treating FL with monoclonal anti-Id antibodies has been described.^{10,73,74} Successes were encouraging (45 persons, 66% overall responses, 18% complete remissions of durations much greater than achieved with anti-CD20), but the logistics proved unsustainable. In some cases, there were significant levels of extracellular idiotype antigen. The series provided 5 excellent examples of dormancy of subclinical tumor in patients who had enjoyed up to 10 years of clinical complete remission. Unfortunately, observations on antigenic modulation were not included. But there is an obvious lesson in the presumed antigenic modulation not proving a complete bar to good results. It will be of interest to investigate whether antimannose antibodies also lead to endocytosis, and if any secreted Ig, which could act as a potential barrier to antibody, carries the mannosylated glycoform.

Modulation of CD20

Before 2003, most authors reported zero or very slow⁷⁵ modulation induced by monoclonal anti-CD20 *in vitro*, nor was it noted *in vivo* experimentally or clinically in the treatment of FL. In contrast, reports then appeared of modulation of CD20 on chronic lymphocytic leukemia (CLL) cells in response to rituximab therapy.^{76,77} After infusion of 30 mg, C3 fragments were demonstrable on the leukemic cells. Cell numbers then decreased considerably. However, they increased again toward the end of the approximately 600-mg, approximately 5-hour infusion, but with surface CD20 reduced by more than or equal to 90%.⁷⁸ The timing, rapidity, and extent of this antigen depletion suggested to the authors a removal of complexes by trogocytosis after cytotoxic mechanisms had been exhausted by an initial killing of antibody-coated cells.

Antigenic modulation in rituximab therapy of FL, where neoplastic cells are absent from blood or present only in small numbers, presents a different picture. The beginning of the first infusion is possibly the most critical part of an antibody course. It is the stage most prone to yield toxicity and might initiate prolonged effector modulation (next section). Any antigen-positive cells in the blood are hazarded by the slowly rising antibody concentration but have an opportunity to respond by undergoing antigenic modulation. Normal B lymphocytes evidently fail to modulate sufficiently to escape. In the Stanford trials of therapy of FL,^{24,79} B lymphocytes had largely disappeared from the circulation after treatment by 4 antibody infusions at 375 mg/m² at 1-week intervals. They remained nearly undetectable (as judged by CD19 positivity) for approximately 6 months after treatment, and then increased slowly in number. Apparently cytotoxic mechanisms killing antibody-coated B lymphocytes were not exhausted as they were during infusions in CLL (where B-lymphocyte counts can exceed 100 times normal). The fate of the normal lymphocytes in these FL cases is in complete contrast to TL⁺ mouse lymphocytes surviving intact *in vivo* in the face of high titer anti-TL antibody.

Absent or inefficient antigenic modulation was also revealed by neoplastic B lymphocytes in nodal masses. In a phase 1, escalating single-dose (10-500 mg/m²) study of FL,¹⁷ these cells, when examined by flow cytometry of biopsies taken 2 weeks after treatment, still exhibited a coating of antibody. We discuss later this prolonged survival of antibody-coated FL cells.

Type I/II dichotomy

Antigenic modulation displayed among a number of anti-CD20 antibodies has been investigated.²¹ A type I/II dichotomy based on rates of modulation was observed. Rituximab is in the type I group, whereas the type II group contains antibodies modulating even more slowly. Among other differences, the type I antibodies activate complement better, and some of the type II antibodies induce a nonapoptotic form of receptor-initiated cell death. But it is the slower modulation by type II that has claimed the most attention, on the basis that the longer persistence of antibody coating could favor ADCC and phagocytosis. For whatever reason, a type II antibody proved superior to type I in depleting, *in vivo*, B cells from mice transgenic for human CD20.⁸⁰ Another observation was that rates of antigenic modulation varied also with the density of Fc γ RIIB on the target-cell surface.⁸¹ It should be noted in passing that, in FL with no recorded antibody treatment,

deregulated Fc γ RIIB production by neoplastic B lymphocytes was correlated with tumor progression.^{82,83}

Effector modulation

A major feature of anti-CD20 therapy in humans, not addressed in mouse experiments, is the remarkable delay in onset of tumor regression in patients exhibiting a significant response. This is seen on comparing the Stanford trials of anti-Id and anti-CD20.^{10,17} Delays before tumor responses were noted, taking the first day of the first infusion as day 0, were in the anti-Id trial 8 to 16 days and, in the anti-CD20 trial, 28 to 133 days (median, 71 days). Speculation regarding the nature of late responses includes a “vaccinal” immune response to the tumor. A brief report has appeared of variable T-cell responses to the tumor idiotype in 5 rituximab-treated patients,⁸⁴ and more data on this phenomenon are awaited.

We think that the evidence at present is greatly in favor of the late responses being the result of antibody. In a multicenter trial,⁸⁵ the median plasma levels of rituximab at 3 months after treatment (105 days after the first of 4 infusions) were as follows: in responders (complete response and partial response, 62 patients), 25.4 μ g/mL; in nonresponders (42 patients), 5.9 μ g/mL. Not only are the antibody levels among responders good for the time elapsed since treatment, they also predict levels in extravascular fluids⁸⁶ well within the cytotoxic range of ADCC.

Suppression of autoimmune inflammation: a model for effector modulation in antibody therapy?

We postulate that the delay in tumor responses to rituximab therapy is the result of effector modulation, which may be defined as a failure of immunologic effectors to kill antibody-coated targets at antibody levels predicted to lie within the cytotoxic range. The postulate relies heavily on an apparent analogy with suppressed autoimmune inflammation.

Autoimmune inflammation in humans is in certain cases usefully suppressed by one of 2 measures: infusion of intravenous normal human IgG (IVIG) or infusion of human IgG antibody to the rhesus D antigen (anti-D). IVIG preparations are pooled from plasma of at least 1000 normal donors. Large amounts are infused, for example, up to a total of 2 g/kg (twice the normal body content of IgG) given over 2 to 5 days. This has proved particularly valuable in childhood immune thrombocytopenic purpura (ITP), for which the approach was introduced.⁸⁷ Although platelet autoantibodies persist, the platelet count rises over approximately 5 days; and in cases of acute ITP, the procedure is often curative. Chronic ITP usually needs repeated infusions, but these might be spaced weeks apart.

Speculation about the mechanisms of action of IVIG has yielded almost a surfeit of possibilities.⁸⁸ One pathway leading to decreased macrophage activity has been demonstrated in detail by Ravetch et al.^{89,90} A minor (\sim 2%) population of human IgG possesses Fc γ glycan terminating in α -2,6 sialic acid with affinity for the lectin DC-SIGN. These glycans initiate a pathway with anti-inflammatory activity marked by increased expression of Fc γ RIIB on macrophages. Another response to IVIG, which blocks inflammatory IFN- γ signaling, has been defined as a suppression of the IFNGR2 subunit of the IFN- γ receptor.⁹¹ There is persuasive

evidence that dimers or higher aggregates of IgG, formed after mixing monomeric IgG preparations from multiple donors, are required for IVIG to initiate effective anti-inflammatory activity.^{88,91-93}

The large infusions of IVIG described in the preceding paragraph may be replaced by small infusions of anti-D IgG, consisting of more than 90% polyclonal anti-D⁹⁴ and given in doses up to 75 μ g/kg per day. This procedure is applicable to rhesus-D positive subjects (\sim 85% of whites, more than 90% of blacks and Asians) and forms a coating of immune complexes on the recipient's red cells. Results have been broadly comparable to those given by IVIG, but studies of spontaneous ITP in humans⁹⁵ and of a mouse model of ITP⁹⁶ have both suggested that IVIG and anti-D achieve ameliorations by different mechanisms. These results attest again to the complexity of the variables involved. The anti-D procedure could be claimed to resemble anti-CD20 therapy more closely than does IVIG administration.

Similarities between the delay in responding to anti-CD20 therapy and the therapeutic suppression of autoimmune inflammation⁹⁷ can now be summarized. In both maneuvers, there is a large initial exposure of macrophages and other effectors to IgG aggregates or immune complexes (performed in IVIG, formed on red cells by anti-D, formed on normal and neoplastic B cells by anti-CD20). In both maneuvers, the patient frequently experiences rigors and fever during the first infusion, symptoms typical of the release of cytokines, phospholipids, and other mediators. Such releases are thought to arise mainly from effector cells activated by cross-linkage of their surface Fc γ R. Again, in both settings, second and later infusions contrast with the first in being generally symptom-free. We attribute this tentatively to the initial excessive mediator release leading to modulation, with changes such as production of IL-4, polarization of T cells to the T_H2 state, and polarization of macrophages to a quiescent state associated with high expression of Fc γ RIIB.⁹⁸ This modulation appears to last for weeks or months.

These concepts imply that a view of the undesirability of antigenic modulation cannot hold in all situations. In comparing the Stanford anti-Id and anti-CD20 experiences, the prompt occurrence and better durability of remissions with anti-Id might have owed much to early antigenic modulation reducing antibody coating of targets, and so reducing the excessive stimulation of effector cells, which leads to effector modulation.

More effective antibodies?

A number of new anti-CD20 antibodies are presently undergoing clinical trials as alternatives to rituximab in the treatment of FL, CLL, and other lymphoid tumors.⁹⁹ Final verdicts on these comparisons are not available, but 2 of the antibodies with interesting features, ofatumumab and GA101 (obinutuzumab), are considered in the following paragraphs.

It should be noted here, in assessing performances *in vitro* of ADCC by novel antibodies, that NK cells from peripheral blood are convenient standard effectors because the cells do not need preliminary activation and need not be separated from other mononuclear cells. However, as a surrogate for macrophage ADCC, results could be deceptive: NK cells do not possess the crucially important Fc γ RIIB,⁵¹ and they possess complex inhibitory systems of their own, which will be variably recruited by nonautologous targets.

Ofatumumab is a fully human IgG1 κ anti-CD20 antibody produced in mouse cells by transgenic technology. It (referred to as 2F2) was shown to engage a CD20 epitope distinct from that used by rituximab, to possess a slower off-rate from CD20 than does rituximab, and to perform better in assessments in vitro of ADCC and complement-mediated cytotoxicity.¹⁰⁰ Despite these favorable features, data from a phase 2 trial of first-line immunotherapy of CLL show it performing less well than rituximab.¹⁰¹ Other trials are still current.

GA101 is a type II IgG1 κ anti-CD20 antibody. It was derived by humanization of the murine IgG antibody B-ly1, selection of variants to improve direct cell-killing, and growth in a line of CHO cells, which endow the Fc γ with nonfucosylated glycans. Binding to Fc γ RIIIa and ADCC performance by NK cells in vitro were enhanced as anticipated by the choice of glycan. Performance exceeded that of rituximab in treating lymphoma xenograft models, and in depleting normal B lymphocytes in both blood and tissue in cynomolgus monkeys.¹⁰²

Further engineering of the Fc γ module

Results achieved with antitumor antibodies in Fc γ RIIB^{-/-} mice⁵¹ stimulated efforts to improve, by mutagenesis of Fc γ , the ratio of (K_A for union with Fc γ RIII) to (K_A for union with Fc γ RIIB). Increases in the ratio of 9- and 10-fold were reported.^{103,104} An increase of up to 50-fold was reported for human IgG with nonfucosylation of the glycans,¹⁰⁵ forming the floor of the docking site for all Fc γ R (Figure 3).

We have designed a bispecific¹⁰⁶ FabIgG construct in which a recombinant Fab' γ module, with antibody specificity for Fc γ RIII, is attached to the rituximab hinge in a manner deliberately disabling the Fc γ R docking site.^{107,108} The affinity for Fc γ RIII is enhanced, affinities for all other Fc γ R collapse, and the FabIgG acquires a ratio of K_A (Fc γ RIII) to K_A (Fc γ RIIB) increased more than 1000-fold. The other docking sites on Fc γ ^{109,110} (Figure 3) do not involve the hinge and are minimally affected.

It is hoped that antibody constructs similar to those in the preceding paragraphs, used initially at least at repeated low doses, could achieve a given level of cell kill with less induction of both antigenic and effector modulations. The situations are complex and decisions must depend on clinical observations.

In conclusion, infusion of mAb into patients with FL is now an accepted part of treatment protocols. The outcome depends on the target antigen, and differences are illustrated by comparing anti-Id and anti-CD20. Anti-Id may have direct cytotoxic action, but it undergoes rapid antigenic modulation. Nevertheless, clinical results, although limited because of the need for individual antibodies, are impressive. In contrast, very slow modulation of anti-CD20 yields persisting antibody-coated cells, which exceed cytotoxic capability and produce prolonged effector modulation, an apparent defense against "cytokine storm." Strengthening antibody attack requires knowledge of the mechanism of action. To return to anti-Id, but using a single mAb is attractive, and a new possibility of targeting the unusual mannoseylated Ig variable regions is

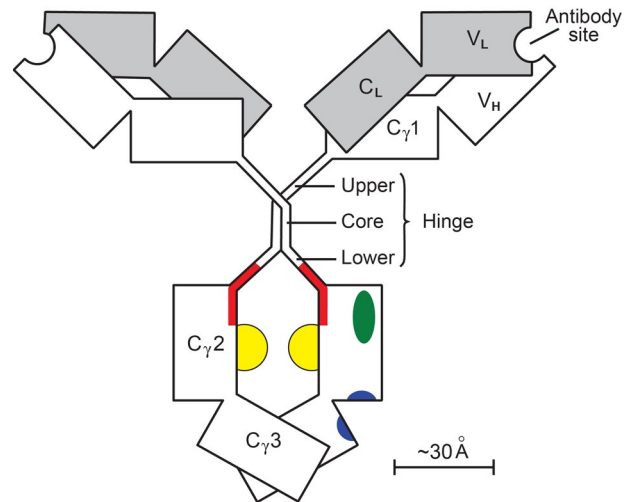


Figure 3. A human IgG1 molecule. Heavy (γ) chains are clear; light (κ or λ) chains are shaded. Individual domains (V, variable; C, constant) are depicted as rectangles. The paired C₂ and C₃ domains with their N-linked glycans (yellow) make up the Fc γ module. The remainder of the molecule (including its hinge) is composed of 2 Fab' γ modules. The hinge (γ -chain residues 221-237) has a rigid core with 2 γ - γ interchain disulfide bonds, whereas the upper and lower hinges are flexible. One of the 2 set of docking sites on Fc γ is shown. The site for all Fc γ receptors (red) involves the medial aspects of both C₂ domains, extends into the lower hinge, and has a floor formed by the 2 Fc γ glycans.¹⁰⁷ The site for FcRn (blue) involves both C₂ and C₃ domains at their interface.¹⁰⁹ The site for complement C1q (green) is on the surface of the C₂ domain lateral to the Fc γ receptor site.¹¹⁰ The contralateral set of sites is obscured. In the FabIgG derivative,¹⁰⁸ the hinge disulfide bonds are cleaved; and a third Fab' γ module, with antibody specificity for the activating Fc γ RIIIa, is attached to one of the resulting cysteine residues. The original Fc γ R site is deliberately disabled so that there is little residual affinity for Fc γ RIIB. The sites for FcRn and complement C1q are little affected.

emerging. Effector cells are probably important for both anti-Id and anti-CD20, and modifications of potency and dose of antibody to conserve effector cell function may be required to improve performance.

Acknowledgments

The authors thank Vania Coelho for her invaluable contributions to the study of Ig V-region mannosylation in FL, Terry Hamblin for perceptive discussions of antibody therapy, and Lynsey Block for invaluable help with preparing the manuscript.

This work was supported by Cancer Research UK and Tenovus.

Authorship

Contribution: F.K.S. and G.T.S. wrote the paper, contributed comments, and edited the manuscript.

Conflict-of-interest disclosure: The authors declare no competing financial interests.

Correspondence: Freda K. Stevenson, Cancer Sciences Academic Unit, Southampton University Hospitals Trust, Southampton, SO16 6YD, United Kingdom; e-mail: fs@soton.ac.uk.

References

- Kuppers R, Dalla-Favera R. Mechanisms of chromosomal translocations in B cell lymphomas. *Oncogene*. 2001;20(40):5580-5594.
- Roulland S, Faroudi M, Mamessier E, Sungalee S, Salles G, Nadel B. Early steps of follicular lymphoma pathogenesis. *Adv Immunol*. 2011;111:1-46.
- Jegalian AG, Eberle FC, Pack SD, et al. Follicular lymphoma in situ: clinical implications and comparisons with partial involvement by follicular lymphoma. *Blood*. 2011;118(11):2976-2984.
- Ruminy P, Jardin F, Piquenet JM, et al. S(mu) mutation patterns suggest different progression pathways in follicular lymphoma: early direct or late from FL progenitor cells. *Blood*. 2008;112(5):1951-1959.
- Bastion Y, Sebban C, Berger F, et al. Incidence, predictive factors, and outcome of lymphoma transformation in follicular lymphoma patients. *J Clin Oncol*. 1997;15(4):1587-1594.

6. Lossos IS, Gascoyne RD. Transformation of follicular lymphoma. *Best Pract Res Clin Haematol*. 2011;24(2):147-163.
7. Montoto S, Fitzgibbon J. Transformation of indolent B-cell lymphomas. *J Clin Oncol*. 2011;29(14):1827-1834.
8. Morin RD, Mendez-Lago M, Mungall AJ, et al. Frequent mutation of histone-modifying genes in non-Hodgkin lymphoma. *Nature*. 2011;476(7360):298-303.
9. Lam KP, Kuhn R, Rajewsky K. In vivo ablation of surface immunoglobulin on mature B cells by inducible gene targeting results in rapid cell death. *Cell*. 1997;90(6):1073-1083.
10. Meeker TC, Lowder J, Maloney DG, et al. A clinical trial of anti-idiotype therapy for B cell malignancy. *Blood*. 1985;65(6):1349-1363.
11. Zhu D, McCarthy H, Ottensmeier CH, Johnson P, Hamblin TJ, Stevenson FK. Acquisition of potential N-glycosylation sites in the immunoglobulin variable region by somatic mutation is a distinctive feature of follicular lymphoma. *Blood*. 2002;99(7):2562-2568.
12. Radcliffe CM, Arnold JN, Suter DM, et al. Human follicular lymphoma cells contain oligomannose glycans in the antigen-binding site of the B-cell receptor. *J Biol Chem*. 2007;282(10):7405-7415.
13. Stevenson FK, Gordon J. Immunization with idiotype immunoglobulin protects against development of B lymphocytic leukemia, but emerging tumor cells can evade antibody attack by modulation. *J Immunol*. 1983;130(2):970-973.
14. Kwak LW, Campbell MJ, Czerwinski DK, Hart S, Miller RA, Levy R. Induction of immune responses in patients with B-cell lymphoma against the surface-immunoglobulin idiotype expressed by their tumors. *N Engl J Med*. 1992;327(17):1209-1215.
15. Bendandi M, Gocke CD, Kobrin CB, et al. Complete molecular remissions induced by patient-specific vaccination plus granulocyte-macrophage colony-stimulating factor against lymphoma. *Nat Med*. 1999;5(10):1171-1177.
16. Schuster SJ, Neelapu SS, Gause BL, et al. Vaccination with patient-specific tumor-derived antigen in first remission improves disease-free survival in follicular lymphoma. *J Clin Oncol*. 2011;29(20):2787-2794.
17. Maloney DG, Liles TM, Czerwinski DK, et al. Phase I clinical trial using escalating single-dose infusion of chimeric anti-CD20 monoclonal antibody (IDEC-C2B8) in patients with recurrent B-cell lymphoma. *Blood*. 1994;84(8):2457-2466.
18. Coiffier B, Lepage E, Briere J, et al. CHOP chemotherapy plus rituximab compared with CHOP alone in elderly patients with diffuse large-B-cell lymphoma. *N Engl J Med*. 2002;346(4):235-242.
19. Vuist WM, Levy R, Maloney DG. Lymphoma regression induced by monoclonal anti-idiotype antibodies correlates with their ability to induce Ig signal transduction and is not prevented by tumor expression of high levels of bcl-2 protein. *Blood*. 1994;83(4):899-906.
20. Weiner GJ. Rituximab: mechanism of action. *Semin Hematol*. 2010;47(2):115-123.
21. Beers SA, Chan CH, French RR, Cragg MS, Glennie MJ. CD20 as a target for therapeutic type I and II monoclonal antibodies. *Semin Hematol*. 2010;47(2):107-114.
22. Ravetch JV, Clynes RA. Divergent roles for Fc receptors and complement in vivo. *Annu Rev Immunol*. 1998;16:421-432.
23. Shushakova N, Skokowa J, Schulman J, et al. C5a anaphylatoxin is a major regulator of activating versus inhibitory FcγR3s in immune complex-induced lung disease. *J Clin Invest*. 2002;110(12):1823-1830.
24. Maloney DG, Grillo-Lopez AJ, White CA, et al. IDEC-C2B8 (Rituximab) anti-CD20 monoclonal antibody therapy in patients with relapsed low-grade non-Hodgkin's lymphoma. *Blood*. 1997;90(6):2188-2195.
25. Mottok A, Renne C, Seifert M, et al. Inactivating SOCS1 mutations are caused by aberrant somatic hypermutation and restricted to a subset of B-cell lymphoma entities. *Blood*. 2009;114(20):4503-4506.
26. Carloti E, Wrench D, Matthews J, et al. Transformation of follicular lymphoma to diffuse large B-cell lymphoma may occur by divergent evolution from a common progenitor cell or by direct evolution from the follicular lymphoma clone. *Blood*. 2009;113(15):3553-3557.
27. Schmitz R, Renne C, Rosenquist R, et al. Insights into the multistep transformation process of lymphomas: IgH-associated translocations and tumor suppressor gene mutations in clonally related composite Hodgkin's and non-Hodgkin's lymphomas. *Leukemia*. 2005;19(8):1452-1458.
28. Aarts WM, Bende RJ, Steenbergen EJ, et al. Variable heavy chain gene analysis of follicular lymphomas: correlation between heavy chain isotype expression and somatic mutation load. *Blood*. 2000;95(9):2922-2929.
29. Zhu D, Ottensmeier CH, Du MQ, McCarthy H, Stevenson FK. Incidence of potential glycosylation sites in immunoglobulin variable regions distinguishes between subsets of Burkitt's lymphoma and mucosa-associated lymphoid tissue lymphoma. *Br J Haematol*. 2003;120(2):217-222.
30. McCann KJ, Ottensmeier CH, Callard A, et al. Remarkable selective glycosylation of the immunoglobulin variable region in follicular lymphoma. *Mol Immunol*. 2008;45(6):1567-1572.
31. Coelho V, Krysov S, Ghaemmaghami AM, et al. Glycosylation of surface Ig creates a functional bridge between human follicular lymphoma and microenvironmental lectins. *Proc Natl Acad Sci U S A*. 2010;107(43):18587-18592.
32. Marth JD, Grewal PK. Mammalian glycosylation in immunity. *Nat Rev Immunol*. 2008;8(11):874-887.
33. Ubelhart R, Bach MP, Eschbach C, Wossning T, Reth M, Jumaa H. N-linked glycosylation selectively regulates autonomous precursor BCR function. *Nat Immunol*. 2010;11(8):759-765.
34. Tedder TF, Tuscano J, Sato S, Kehrl JH. CD22, a B lymphocyte-specific adhesion molecule that regulates antigen receptor signaling. *Annu Rev Immunol*. 1997;15:481-504.
35. Irish JM, Myklebust JH, Alizadeh AA, et al. B-cell signaling networks reveal a negative prognostic human lymphoma cell subset that emerges during tumor progression. *Proc Natl Acad Sci U S A*. 2010;107(29):12747-12754.
36. Allavena P, Chieppa M, Bianchi G, et al. Engagement of the mannose receptor by tumoral mucins activates an immune suppressive phenotype in human tumor-associated macrophages. *Clin Dev Immunol*. 2010;2010:547179.
37. Calvo KR, Dabir B, Kovach A, et al. IL-4 protein expression and basal activation of Erk in vivo in follicular lymphoma. *Blood*. 2008;112(9):3818-3826.
38. Dave SS, Wright G, Tan B, et al. Prediction of survival in follicular lymphoma based on molecular features of tumor-infiltrating immune cells. *N Engl J Med*. 2004;351(21):2159-2169.
39. Relander T, Johnson NA, Farinha P, Connors JM, Sehn LH, Gascoyne RD. Prognostic factors in follicular lymphoma. *J Clin Oncol*. 2010;28(17):2902-2913.
40. Carreras J, Lopez-Guillermo A, Roncador G, et al. High numbers of tumor-infiltrating programmed cell death 1-positive regulatory lymphocytes are associated with improved overall survival in follicular lymphoma. *J Clin Oncol*. 2009;27(9):1470-1476.
41. Meeker T, Lowder J, Cleary ML, et al. Emergence of idiotype variants during treatment of B-cell lymphoma with anti-idiotype antibodies. *N Engl J Med*. 1985;312(26):1658-1665.
42. Weng J, Neelapu SS, Woo AF, Kwak LW. Identification of human idiotype-specific T cells in lymphoma and myeloma. *Curr Top Microbiol Immunol*. 2011;344:193-210.
43. George AJ, Tutt AL, Stevenson FK. Anti-idiotypic mechanisms involved in suppression of a mouse B cell lymphoma, BCL1. *J Immunol*. 1987;138(2):628-634.
44. Weng WK, Czerwinski D, Timmerman J, Hsu FJ, Levy R. Clinical outcome of lymphoma patients after idiotype vaccination is correlated with humoral immune response and immunoglobulin G Fc receptor genotype. *J Clin Oncol*. 2004;22(23):4717-4724.
45. Hsueh RC, Hammill AM, Lee JA, Uhr JW, Scheuermann RH. Activation of the Syk tyrosine kinase is insufficient for downstream signal transduction in B lymphocytes. *BMC Immunol*. 2002;3:16.
46. Vinuesa CG, Linterman MA, Goodnow CC, Randall KL. T cells and follicular dendritic cells in germinal center B-cell formation and selection. *Immunol Rev*. 2010;237(1):72-89.
47. Savellyeva N, Shipton M, Suchacki A, Babbage G, Stevenson FK. High-affinity memory B cells induced by conjugate vaccines against weak tumor antigens are vulnerable to nonconjugated antigen. *Blood*. 2011;118(3):650-659.
48. Pejchal R, Doores KJ, Walker LM, et al. A potent and broad neutralizing antibody recognizes and penetrates the HIV glycan shield. *Science*. 2011;334(6059):1097-1103.
49. Hersey P. New look at antiserum therapy of leukaemia. *Nat New Biol*. 1973;244(131):22-24.
50. Clynes R, Ravetch JV. Cytotoxic antibodies trigger inflammation through Fc receptors. *Immunity*. 1995;3(1):21-26.
51. Clynes RA, Towers TL, Presta LG, Ravetch JV. Inhibitory Fc receptors modulate in vivo cytotoxicity against tumor targets. *Nat Med*. 2000;6(4):443-446.
52. Angelini DF, Borsellino G, Poupot M, et al. FcγRIII discriminates between 2 subsets of Vγ9Vδ2 effector cells with different responses and activation pathways. *Blood*. 2004;104(6):1801-1807.
53. Uchida J, Hamaguchi Y, Oliver JA, et al. The innate mononuclear phagocyte network depletes B lymphocytes through Fc receptor-dependent mechanisms during anti-CD20 antibody immunotherapy. *J Exp Med*. 2004;199(12):1659-1669.
54. Hamaguchi Y, Xiu Y, Komura K, Nimmerjahn F, Tedder TF. Antibody isotype-specific engagement of Fcγ receptors regulates B lymphocyte depletion during CD20 immunotherapy. *J Exp Med*. 2006;203(3):743-753.
55. Hamaguchi Y, Uchida J, Cain DW, et al. The peritoneal cavity provides a protective niche for B1 and conventional B lymphocytes during anti-CD20 immunotherapy in mice. *J Immunol*. 2005;174(7):4389-4399.
56. van Ravenswaay Claassen HH, Kluijn PM, Fleuren GJ. Tumor infiltrating cells in human cancer: on the possible role of CD116+ macrophages in antitumor cytotoxicity. *Lab Invest*. 1992;67(2):166-174.
57. Hubert P, Heitzmann A, Viel S, et al. Antibody-dependent cell cytotoxicity synapses form in mice during tumor-specific antibody immunotherapy. *Cancer Res*. 2011;71(15):5134-5143.
58. Cartron G, Dacheux L, Salles G, et al. Therapeutic activity of humanized anti-CD20 monoclonal antibody and polymorphism in IgG Fc receptor FcγRIIIa gene. *Blood*. 2002;99(3):754-758.
59. Weng WK, Levy R. Two immunoglobulin G fragment C receptor polymorphisms independently predict response to rituximab in patients with follicular lymphoma. *J Clin Oncol*. 2003;21(21):3940-3947.

60. Weng WK, Levy R. Expression of complement inhibitors CD46, CD55, and CD59 on tumor cells does not predict clinical outcome after rituximab treatment in follicular non-Hodgkin lymphoma. *Blood*. 2001;98(5):1352-1357.
61. Wang SY, Racila E, Taylor RP, Weiner GJ. NK-cell activation and antibody-dependent cellular cytotoxicity induced by rituximab-coated target cells is inhibited by the C3b component of complement. *Blood*. 2008;111(3):1456-1463.
62. Old LJ, Boyse EA. Antigenic properties of experimental leukemias: I. Serological studies in vitro with spontaneous and radiation-induced leukemias. *J Natl Cancer Inst*. 1963;31:977-995.
63. Stackpole CW, Jacobson JB, Lardis MP. Antigenic modulation in vitro: I. Fate of thymus-leukemia (TL) antigen-antibody complexes following modulation of TL antigenicity from the surfaces of mouse leukemia cells and thymocytes. *J Exp Med*. 1974;140(4):939-953.
64. Glennie M, Stevenson FK, Stevenson GT, Virji M. Cross-linking of lymphocytic surface immunoglobulin inhibits its production via a cyclic nucleotide mechanism. *Nature*. 1979;281(5729):305-307.
65. Joly E, Hudrisier D. What is trogocytosis and what is its purpose? *Nat Immunol*. 2003;4(9):815.
66. Beum PV, Kennedy AD, Williams ME, Lindorfer MA, Taylor RP. The shaving reaction: rituximab/CD20 complexes are removed from mantle cell lymphoma and chronic lymphocytic leukemia cells by THP-1 monocytes. *J Immunol*. 2006;176(4):2600-2609.
67. Riond J, Elhmouzi J, Hudrisier D, Gairin JE. Capture of membrane components via trogocytosis occurs in vivo during both dendritic cells and target cells encounter by CD8(+) T cells. *Scand J Immunol*. 2007;66(4):441-450.
68. Zhou G, Ding ZC, Fu J, Levitsky HI. Presentation of acquired peptide-MHC class II ligands by CD4+ regulatory T cells or helper cells differentially regulates antigen-specific CD4+ T cell response. *J Immunol*. 2011;186(4):2148-2155.
69. Schreiner GF, Unanue ER. Calcium-sensitive modulation of Ig capping: evidence supporting a cytoplasmic control of ligand receptor complexes. *J Exp Med*. 1976;143(1):15-31.
70. Gordon J, Robinson DS, Stevenson GT. Antigenic modulation of lymphocytic surface immunoglobulin yielding resistance to complement-mediated lysis: I. Characterization with syngeneic and xenogeneic complements. *Immunology*. 1981;42(1):7-12.
71. Lane AC, Foroosan S, Glennie MJ, Kowalski-Saunders P, Stevenson GT. Enhanced modulation of antibodies coating guinea pig leukemic cells in vitro and in vivo: the role of Fc gamma R expressing cells. *J Immunol*. 1991;146(7):2461-2468.
72. Glennie MJ, Stevenson GT. Univalent antibodies kill tumour cells in vitro and in vivo. *Nature*. 1982;295(5851):712-714.
73. Miller RA, Maloney DG, Warnke R, Levy R. Treatment of B-cell lymphoma with monoclonal anti-idiotype antibody. *N Engl J Med*. 1982;306(9):517-522.
74. Davis TA, Maloney DG, Czerwinski DK, Liles TM, Levy R. Anti-idiotype antibodies can induce long-term complete remissions in non-Hodgkin's lymphoma without eradicating the malignant clone. *Blood*. 1998;92(4):1184-1190.
75. Press OW, Farr AG, Borroz KI, Anderson SK, Martin PJ. Endocytosis and degradation of monoclonal antibodies targeting human B-cell malignancies. *Cancer Res*. 1989;49(17):4906-4912.
76. Jilani I, O'Brien S, Manshuri T, et al. Transient down-modulation of CD20 by rituximab in patients with chronic lymphocytic leukemia. *Blood*. 2003;102(10):3514-3520.
77. Kennedy AD, Beum PV, Solga MD, et al. Rituximab infusion promotes rapid complement depletion and acute CD20 loss in chronic lymphocytic leukemia. *J Immunol*. 2004;172(5):3280-3288.
78. Taylor RP, Lindorfer MA. Antigenic modulation and rituximab resistance. *Semin Hematol*. 2010;47(2):124-132.
79. Maloney DG, Grillo-Lopez AJ, Bodkin DJ, et al. IDEC-C2B8: results of a phase I multiple-dose trial in patients with relapsed non-Hodgkin's lymphoma. *J Clin Oncol*. 1997;15(10):3266-3274.
80. Beers SA, French RR, Chan HT, et al. Antigenic modulation limits the efficacy of anti-CD20 antibodies: implications for antibody selection. *Blood*. 2010;115(25):5191-5201.
81. Lim SH, Vaughan AT, Ashton-Key M, et al. Fc gamma receptor IIb on target B cells promotes rituximab internalization and reduces clinical efficacy. *Blood*. 2011;118(9):2530-2540.
82. Callanan MB, Le Baccon P, Mossuz P, et al. The IgG Fc receptor, Fc gammaRIIb, is a target for deregulation by chromosomal translocation in malignant lymphoma. *Proc Natl Acad Sci U S A*. 2000;97(1):309-314.
83. Chen W, Palanisamy N, Schmidt H, et al. Deregulation of FCGR2B expression by 1q21 rearrangements in follicular lymphomas. *Oncogene*. 2001;20(52):7686-7693.
84. Hilchey SP, Hyrien O, Mosmann TR, et al. Rituximab immunotherapy results in the induction of a lymphoma idiotype-specific T-cell response in patients with follicular lymphoma: support for a "vaccinal effect" of rituximab. *Blood*. 2009;113(16):3809-3812.
85. Berinstein NL, Grillo-Lopez AJ, White CA, et al. Association of serum Rituximab (IDEC-C2B8) concentration and anti-tumor response in the treatment of recurrent low-grade or follicular non-Hodgkin's lymphoma. *Ann Oncol*. 1998;9(9):995-1001.
86. Nakamura RM, Spiegelberg HL, Lee S, Weigle WO. Relationship between molecular size and intra- and extravascular distribution of protein antigens. *J Immunol*. 1968;100(2):376-383.
87. Imbach P, Barandun S, d'Apuzzo V, et al. High-dose intravenous gammaglobulin for idiopathic thrombocytopenic purpura in childhood. *Lancet*. 1981;1(8232):1228-1231.
88. Durandy A, Kaveri SV, Kuijpers TW, et al. Intravenous immunoglobulins: understanding properties and mechanisms. *Clin Exp Immunol*. 2009;158(suppl 1):2-13.
89. Nimmerjahn F, Ravetch JV. Antibody-mediated modulation of immune responses. *Immunol Rev*. 2010;236:265-275.
90. Anthony RM, Kobayashi T, Wermeling F, Ravetch JV. Intravenous gammaglobulin suppresses inflammation through a novel T(H)2 pathway. *Nature*. 2011;475(7354):110-113.
91. Park-Min KH, Serbina NV, Yang W, et al. Fc gammaRIII-dependent inhibition of interferon-gamma responses mediates suppressive effects of intravenous immune globulin. *Immunity*. 2007;26(1):67-78.
92. Wymann S, Ghielmetti M, Schaub A, et al. Monomerization of dimeric IgG of intravenous immunoglobulin (IVIg) increases the antibody reactivity against intracellular antigens. *Mol Immunol*. 2008;45(9):2621-2628.
93. Teeling JL, Jansen-Hendriks T, Kuijpers TW, et al. Therapeutic efficacy of intravenous immunoglobulin preparations depends on the immunoglobulin G dimers: studies in experimental immune thrombocytopenia. *Blood*. 2001;98(4):1095-1099.
94. Cheung E, Lieberman HA. Anti-RhD immunoglobulin in the treatment of immune thrombocytopenia. *Biologics*. 2009;3:57-62.
95. Cooper N, Heddle NM, Haas M, et al. Intravenous (IV) anti-D and IV immunoglobulin achieve acute platelet increases by different mechanisms: modulation of cytokine and platelet responses to IV anti-D by Fc gammaRIIa and Fc gammaRIIIa polymorphisms. *Br J Haematol*. 2004;124(4):511-518.
96. Song S, Crow AR, Siragam V, Freedman J, Lazarus AH. Monoclonal antibodies that mimic the action of anti-D in the amelioration of murine ITP act by a mechanism distinct from that of IVIg. *Blood*. 2005;105(4):1546-1548.
97. Stevenson GT. Is antibody therapy of tumor compromised by infusion-related reactions? A case for inhibiting the activity of cyclooxygenase-2. *Leuk Res*. 2005;29(3):239-246.
98. Samuelsson A, Towers TL, Ravetch JV. Anti-inflammatory activity of IVIG mediated through the inhibitory Fc receptor. *Science*. 2001;291(5503):484-486.
99. Alduaij W, Illidge TM. The future of anti-CD20 monoclonal antibodies: are we making progress? *Blood*. 2011;117(11):2993-3001.
100. Teeling JL, Mackus WJ, Wiegman LJ, et al. The biological activity of human CD20 monoclonal antibodies is linked to unique epitopes on CD20. *J Immunol*. 2006;177(1):362-371.
101. Wierda WG, Kipps TJ, Durig J, et al. Chemotherapy with O-FC in previously untreated patients with chronic lymphocytic leukemia. *Blood*. 2011;117(24):6450-6458.
102. Mossner E, Brunker P, Moser S, et al. Increasing the efficacy of CD20 antibody therapy through the engineering of a new type II anti-CD20 antibody with enhanced direct and immune effector cell-mediated B-cell cytotoxicity. *Blood*. 2010;115(22):4393-4402.
103. Lazar GA, Dang W, Karki S, et al. Engineered antibody Fc variants with enhanced effector function. *Proc Natl Acad Sci U S A*. 2006;103(11):4005-4010.
104. Stavenhagen JB, Gorlatov S, Tuailon N, et al. Fc optimization of therapeutic antibodies enhances their ability to kill tumor cells in vitro and controls tumor expansion in vivo via low-affinity activating Fc gamma receptors. *Cancer Res*. 2007;67(18):8882-8890.
105. Shields RL, Lai J, Keck R, et al. Lack of fucose on human IgG1 N-linked oligosaccharide improves binding to human Fc gamma RIII and antibody-dependent cellular toxicity. *J Biol Chem*. 2002;277(30):26733-26740.
106. Segal DM, Weiner GJ, Weiner LM. Introduction: bispecific antibodies. *J Immunol Methods*. 2001;248(1):1-6.
107. Sondermann P, Huber R, Oosthuizen V, Jacob U. The 3.2-A crystal structure of the human IgG1 Fc fragment-Fc gammaRIII complex. *Nature*. 2000;406(6793):267-273.
108. Leong WS, Thomas KA, Chan CH, Stevenson GT. A standardized conversion of IgG antibody to bispecific form with inversely altered affinities for Fc gamma receptors II and III. *Mol Immunol*. 2011;48(5):760-768.
109. Burmeister WP, Huber AH, Bjorkman PJ. Crystal structure of the complex of rat neonatal Fc receptor with Fc. *Nature*. 1994;372(6504):379-383.
110. Idusogie EE, Presta LG, Gazzano-Santoro H, et al. Mapping of the C1q binding site on rituxan, a chimeric antibody with a human IgG1 Fc. *J Immunol*. 2000;164(8):4178-4184.