

Steady-state generation of mucosal IgA⁺ plasmablasts is not abrogated by B-cell depletion therapy with rituximab

Henrik E. Mei,^{1,2} Daniela Frölich,² Claudia Giesecke,² Christoph Loddenkemper,³ Karin Reiter,² Stefanie Schmidt,^{1,2} Eugen Feist,² Capucine Daridon,^{1,2} Hans-Peter Tony,⁴ Andreas Radbruch,¹ and Thomas Dörner^{1,2}

¹German Rheumatism Research Center Berlin (DRFZ), Berlin, Germany; ²Department of Medicine/Rheumatology and Clinical Immunology, Charité University Medicine Berlin, CC12, Berlin, Germany; ³Institute of Pathology, Technische Universität München, Munich, Germany; and ⁴Department of Medicine/Rheumatology, University of Würzburg, Würzburg, Germany

The anti-CD20 antibody rituximab depletes human B cells from peripheral blood, but it remains controversial to what extent tissue-resident B cells are affected. In representative patients with rheumatoid arthritis, we here demonstrate that recently activated presumably short-lived plasmablasts expressing HLA-DR^{high} and Ki-67 continuously circulate in peripheral blood after B-cell depletion by rituximab at 26%-119% of their initial numbers. They circulate independent of splenectomy, express immunoglobulin A

(IgA), β_7 integrin, and C-C motif receptor 10 (CCR10) and migrate along CCL28 gradients in vitro, suggesting their mucosal origin. These plasmablasts express somatically hypermutated V_H gene rearrangements and spontaneously secrete IgA, exhibiting binding to microbial antigens. Notably, IgA⁺ plasmablasts and plasma cells were identified in the lamina propria of patients treated with rituximab during peripheral B-cell depletion. Although a relation of these “steady state”-like plasmablasts with rheumatoid

arthritis activity could not be found, their persistence during B-cell depletion indicates that their precursors, that is, B cells resident in the mucosa are not deleted by this treatment. These data suggest that a population of mucosal B cells is self-sufficient in adult humans and not replenished by CD20⁺ B cells immigrating from blood, lymphoid tissue, or bone marrow, that is, B cells depleted by rituximab. (*Blood*. 2010; 116(24):5181-5190)

Introduction

Plasmablasts are an immediate product of B-cell activation that home either to the bone marrow or to the mucosa to secrete antibody as terminally differentiated plasma cells.¹⁻³ In healthy persons, B cells and antibodies protect from pathogens, whereas loss of immunologic tolerance and malignant transformation result in the generation of autoreactive B cells and autoantibody production and development of lymphoma, respectively. Direct targeting of B cells by the chimeric anti-human CD20 antibody rituximab (RTX) has been developed for the treatment of rheumatoid arthritis (RA) and B-cell malignancies.^{4,5} However, not all patients respond to RTX therapy, and the efficiency of B-cell depletion in lymphoid tissues as well as the susceptibility of different B-cell subtypes remain of central interest, in particular related to individual unresponsiveness.

In RA, depletion of peripheral CD20⁺ B cells reduces, but does not eliminate, autoimmunity, indicated by subsequent flares and continuous production of autoantibodies.⁶ Persisting (auto-) antibodies in patients treated with RTX reflect the continued presence of antibody-secreting cells, whereas it remains unclear whether those are long-lived, CD20⁻ plasma cells, eg, residing in the bone marrow, or whether they have been generated de novo from B cells not depleted by RTX. In this context, germinal center B cells of the Peyer patches and peritoneal B1 B cells resisted to RTX treatment in human *cd20^{sg}* mice.⁷ Depletion of B cells from human lymphoid tissues of systemic immunity, for example, the spleen and lymph nodes by RTX has been described in individual cases.⁸⁻¹⁰ Thus, the

efficiency of global or selective B-cell depletion remains of interest, in particular whether there is a distinct susceptibility of B-cell subsets to RTX within gut-associated lymphoid tissues (GALT).

Here, we demonstrate the continued presence of dividing and migratory plasmablasts expressing a mucosal phenotype in the peripheral blood of patients with RA consistent with steady-state plasmablasts¹ after treatment with RTX. These data show that a subset of chronically activated mucosal B lymphocytes carrying highly mutated V_H gene rearrangements and secreting antimicrobial immunoglobulin A (IgA) are not deleted by RTX. This reflects the robustness of humoral mucosal immunity during B-cell depletion with RTX and underscores the independent regulation of mucosal immune responses in steady state. The resistance of some mucosal B cells to RTX is apparently not stringently related to RA pathogenesis but could represent a mechanism underlying enhanced RTX resistance in some mucosa-associated lymphoid tissue lymphoma cases.^{11,12}

Methods

A detailed description of the patients, samples, and methods are available as supplemental Methods (available on the *Blood* Web site; see the Supplemental Materials link at the top of the online article).

Submitted January 24, 2010; accepted August 15, 2010. Prepublished online as *Blood* First Edition paper, September 9, 2010; DOI 10.1182/blood-2010-01-266536.

The online version of this article contains a data supplement.

The publication costs of this article were defrayed in part by page charge payment. Therefore, and solely to indicate this fact, this article is hereby marked “advertisement” in accordance with 18 USC section 1734.

An Inside *Blood* analysis of this article appears at the front of this issue.

© 2010 by The American Society of Hematology

Patients

Blood samples were taken from 25 patients who received 2 × 1 g of RTX (Roche), from 3 persons who had undergone splenectomy with or without additional RTX treatment, and healthy control subjects, from 3 of them after a tetanus booster immunization.¹³ Endoscopic biopsies were analyzed from patients with diffuse large B-cell lymphoma 3 months after initiation of RTX therapy (+ cyclophosphamide, hydroxydaunomycin, Oncovin, prednisone). The ethics committee of the Charité University Medicine approved the study, and the patients' informed consent was obtained before enrollment in accordance with the Declaration of Helsinki.

Flow cytometry

Peripheral blood mononuclear cells (PBMCs) were isolated and processed as described before.¹ PBMCs were prepared for and analyzed by flow cytometry according to standard procedures. Antibodies used were CD19-phycoerythrin (PE; clone HD37; Dako), CD19-PE-cyanine 7 (SJ25C1; BD), CD45-peridinin chlorophyll protein (PerCp; 2D1; BD), CD27-cyanine 5 (2E4; kind gift from René van Lier, Academic Medical Center, University of Amsterdam), biotinylated κ (G20-193; BD) and λ Ig light chain (JDC-12; BD) and IgA (G20-359; BD), human leukocyte antigen (HLA)-DR coupled to fluorescein isothiocyanate (FITC; clone 30; German Rheumatism Research Center Berlin), CD20-FITC (2H7; BD), CD20-PerCp (L27; BD), β_7 integrin-PE (FIB504; BD), Ki-67-FITC (MIB-1, controlled by DAK-G01; both Dako), CD3-PacificBlue (UCHT1; BD), CD14-PacificBlue (M5E2; BD), CCR10-PE or -allophycocyanine (314305; R&D Systems), IgA-FITC (M24A; Millipore), isotype-matched control antibodies (R35-95, BD; and 54447, R&D Systems). Biotinylated antibody binding was visualized with streptavidin-PerCp (BD). $\alpha_4\beta_7$ integrin and β_7 integrin expression as detected by FIB504 is identical on human blood B lymphocytes, as shown and discussed previously.^{1,14}

Transwell migration assay

Chemotaxis of cells toward CXCL12 (10nM; R&D Systems) or CCL28 (300nM or 500nM; PeproTech) was analyzed with an in vitro transwell migration assay as described previously.^{1,13} Migrated cells were enumerated by enzyme-linked immunospot (EliSpot) or subjected to flow cytometry.

Enzyme-linked immunospot assay

EliSpot technique was used to detect functional antibody-secreting cells with the use of goat anti-human IgG, IgA, and IgM (Sigma-Aldrich) for coating of MultiScreen flat-bottom 96-well plates (Millipore) and detection. Spots were visualized by streptavidin-horseradish peroxidase (Sigma-Aldrich) followed by 3-amino-9-ethylcarbazole (Sigma) dissolved in N,N-dimethylformamide (Sigma), diluted in a 0.2M sodium acetate/0.2M acetic acid buffer. Plates were read by an EliSpot reader (CTL).

In vitro antibody secretion, multiplex analysis, and enzyme-linked immunosorbent assay

PBMCs were incubated 2 days in RPMI 1640 Glutamax containing 10% fetal calf serum (Invitrogen) at 37°C/5% CO₂ to allow for spontaneous secretion of antibody. Cell culture supernatants were analyzed for IgA content by Bioplex (Bio-Rad) and for IgA-rheumatoid factor by enzyme-linked immunosorbent assay (Generic Assays). The reactivity of IgA was analyzed by enzyme-linked immunosorbent assay with the use of polystyrene plates coated with the indicated antigens, and binding of IgA was detected with goat anti-human IgA alkaline phosphatase (Jackson ImmunoResearch Laboratories Inc), followed by visualization with *p*-nitrophenyl phosphate (Sigma) in ethanalamine buffer. Extinction was photometrically determined at 405 nm.

Single-cell sorting and reverse transcriptase polymerase chain reaction

Individual IgA⁺ plasmablasts from healthy controls and or RA patients depleted of B cells with RA or tetanus-specific plasmablasts from previ-

ously immunized persons¹⁵ were sorted from the PBMCs into 96-well plates with the use of a FACSAria (BD).

V_HDJ_HC genes were amplified, sequenced according to previously published protocols,¹⁶ and analyzed with Chromas 2.33 Sequence Viewer (Chromas Technelysium), the BLAST database of the National Center for Biotechnology Information,¹⁷ and JOINSOLVER.¹⁸ Sequences containing a stop codon or an out-of-frame rearrangement were considered to be nonproductive and were not included in the analysis.

Immunohistochemistry and immunofluorescence staining

For immunostaining 2- to 3- μ m sections were cut, deparaffinized, and subjected to a heat-induced epitope retrieval step before incubation with antibodies against CD20 (L26), CD79a (JCB117), MUM1 (MUM1p), Ki-67 (MIB1), and polyclonal rabbit anti-human IgA (all Dako). For detection the streptavidin PO kit (K5001; Dako) was used with diaminobenzidine. For immunofluorescence labeling, sections were incubated with rabbit anti-IgA antibody followed by Alexa Fluor 555-conjugated anti-rabbit antibody (Invitrogen) and subsequent incubation with mouse anti-Ki-67 followed by Alexa Fluor 488-conjugated anti-mouse antibody (Invitrogen). Nuclei were counterstained with DAPI (4'-6'-diamidino-2-phenylindole; Roche).

Statistical analysis

Data were analyzed with FlowJo Version 7.2.5 (TreeStar) and GraphPad Prism Version 4 (GraphPad Software). Statistical significance was calculated with the Mann-Whitney test for comparisons between patient groups at different time points. The Wilcoxon test was used to compare paired observations (both 95% confidence interval [CI], 2-tailed). Spearman rank correlation analysis (2-tailed, 95% CI) was performed in Figure 2.

Results

Circulation of CD20⁻/CD27^{high} plasmablasts and plasma cells during depletion of peripheral CD20⁺ naive and memory B cells

Twenty-five patients with RA were analyzed before and after anti-CD20 antibody therapy with RTX for total CD19⁺ B cells and the underlying subpopulations of naive and antigen-experienced "memory" B cells (CD20⁺/CD27^{+/-})¹⁹ and antibody-secreting cells (CD20⁻/CD27^{high}) comprising plasmablasts and plasma cells.^{1,13} Although naive and memory B cells were fully depleted from the peripheral blood after RTX, antibody-secreting plasmablasts expressing HLA-DR^{high} and Ki-67 were continuously detectable throughout the duration of B-cell depletion. Before therapy, the total number of plasmablasts/plasma cells, but not of CD20⁺ B cells, was significantly reduced in patients with RA compared with healthy controls (Figure 1; supplemental Table 1).

Two until 4 months after RTX treatment, depletion of circulating CD20⁺ B cells was observed in all patients (Figure 1A). Before B-cell depletion therapy, median counts of CD20⁺ B cells were 130.13 cells/ μ L, dropping significantly to < 2 cells/ μ L after 2-6 months and increased to 3.18 cells/ μ L after 9 months, and 70.34 cells/ μ L after 12 months. Repopulation of CD20⁺ B cells was not observed earlier than 6 months after RTX infusion. At this time, in 3 of 20 patients CD20⁺ B cells occurred in the blood at levels > 6 cells/ μ L. Two months after therapy, CD20⁺ B-cell counts were reduced on average by 99.6% \pm 0.3% compared with baseline. At the same time and throughout B-cell depletion therapy, plasmablasts and plasma cells remained detectable at 26%-119% of their median numbers before therapy. Their median number before treatment (1.48 cells/ μ L) was reduced to 0.39-1.12 cells/ μ L during the depletion phase between 2 and 12 months after RTX, with

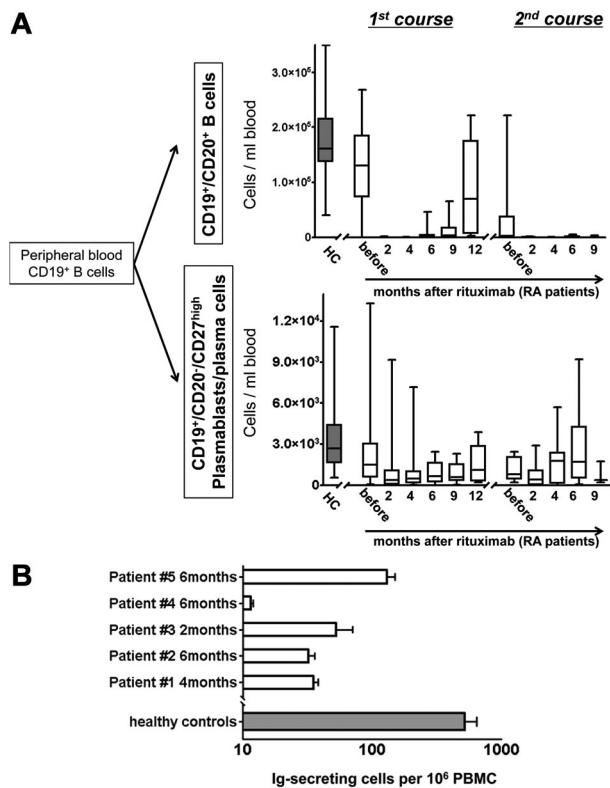


Figure 1. Continuous detection of circulating antibody-secreting cells during B-cell depletion with RTX. (A) Peripheral blood CD19⁺/CD20⁺ naïve and memory B-cell counts and CD19⁺/CD20⁻/CD27^{high} plasmablast and plasma cell counts in RTX-treated patients with rheumatoid arthritis (RA; open boxes). Healthy, untreated controls (HC; n = 41; gray boxes) are shown for comparison. (B) Detection of functional immunoglobulin (Ig)-secreting cells from peripheral blood of patients with RA during B-cell depletion after RTX treatment with the use of an EliSpot assay (5 samples from 4 independent experiments; open boxes; error bars indicate SD of duplicates). The gray bar depicts corresponding values obtained from 10 healthy persons (error bars indicate SD of 10 samples tested).

significant reductions at 2-4 months after treatment (Figure 1A; supplemental Table 1).

At the time when the second course of B-cell depletion was initiated, CD20⁺ B-cell counts were very low (< 6 cells/ μ L) in 6 of 10 patients, whereas in the remaining 4 patients, B cells were detectable at counts > 6 cells/ μ L. After the second RTX treatment, CD20⁺ B-cell counts remained at or were repeatedly reduced to low levels of < 1 cell/ μ L for \geq 9 months, within the detection limit of one B cell in 3×10^5 - 2.5×10^6 PBMCs. At the same time, blood plasmablast/plasma cell counts were stably maintained at median numbers between 0.39 and 1.78 cells/ μ L throughout the second treatment course (Figure 1A; supplemental Table 1). For flow cytometric analyses, up to 2.5×10^6 events were collected per analysis, from which T cells, monocytes, and dead cells were excluded to achieve accurate quantification and characterization of B cells and plasmablasts/plasma cells even at low frequencies (supplemental Figure 1). The detection of intracellular immunoglobulin in PBMCs expressing CD19⁺ and CD27^{high} during B-cell depletion provided characteristic evidence for the persistence of plasmablasts/plasma cells (7 samples; data not shown).

The detection of functional antibody-secreting cells in blood during in vivo B-cell depletion was confirmed by spontaneous secretion of antibodies by these cells in an EliSpot assay, yielding a mean frequency of 53 antibody-secreting cells among 10^6 PBMCs (range, 12-130 cells/ 10^6 PBMCs; 5 donors; Figure 1B) compared

with an average of 520 antibody-secreting cells per 10^6 PBMCs from 10 healthy donors.

To delineate a potential association of circulating plasmablast/plasma cell numbers with RA disease activity before and during B-cell depletion, individual plasmablast/plasma cell numbers were plotted against RA disease activity with the use of DAS28. Except 6 months after RTX treatment, no significant correlations were observed between these parameters (Figure 2).

These data indicate the stable presence of apparently RTX-resistant antibody-secreting cells in the blood of patients with RA during the long-term depletion of circulating CD20⁺ B cells.

Circulating plasmablasts and plasma cells during B-cell depletion therapy express a mucosal phenotype

We previously identified a distinct subset of antibody-secreting cells in the peripheral blood of healthy persons during steady state with the phenotype consistent with their generation in mucosal immune responses.¹ In this context, RTX-resistant cells in patients with RA were further characterized before and during B-cell depletion. Similar to healthy controls, more than one-half of CD19⁺/CD20⁻/CD27^{high} plasmablasts/plasma cells detectable before and throughout B-cell depletion therapy expressed IgA, the mucosal cell adhesion molecule β_7 integrin and the mucosal chemokine receptor CCR10. These data suggest that RTX-resistant plasmablasts may arise from mucosal immune reactions and thus share important similarities with steady-state plasmablasts/plasma cells (Figure 3; supplemental Table 2). Of note, the average frequency of β_7 integrin⁺ plasmablasts/plasma cells was significantly lower in patients with RA before RTX therapy compared with healthy controls ($P = .0072$).

Deeper analyses of steady-state plasmablasts/plasma cells showed that with the exception of a significant coexpression of CCR10 and IgA, the 3 molecules showed an independent expression pattern. Of interest, 72%-86% (mean, 80%) of these plasmablasts/plasma cells expressed at least 1 of the mucosal markers, IgA, CCR10, or β_7 integrin (supplemental Figure 2), indicating that RTX-resistant plasmablasts stably express a mucosal phenotype in healthy and RTX-treated persons.

Splenectomy does not abrogate the steady-state production of IgA⁺ plasmablasts

To substantiate the hypothesis that peripheral blood IgA⁺ plasmablasts in steady state before and after RTX treatment derive from mucosal immune reactions in vivo, peripheral blood from 3 persons who had undergone splenectomy (one of them treated with RTX) was analyzed for steady-state plasmablasts. Comparable with healthy persons,¹ CD19⁺/CD20⁻/CD27^{high} plasmablasts/plasma cells made up 1.7% and 1.6% of CD19⁺ B cells in the blood of 2 persons who had undergone splenectomy who were not treated with RTX. Almost all of these cells expressed IgA (82% and 86%) and 29% and 61%, respectively, expressed β_7 integrin (Figure 4). The third patient who had undergone splenectomy treated with RTX displayed abundant presence of circulating IgA⁺, CCR10⁺, and β_7 integrin⁺ plasmablasts 6 months after treatment (2 cells/ μ L), whereas CD20⁺ B cells were reduced to 3 cells/ μ L. This dataset showed that the spleen is not a regular induction or maintenance site of IgA⁺ plasmablasts circulating during steady state and B-cell depletion and additionally supports their mucosal origin.

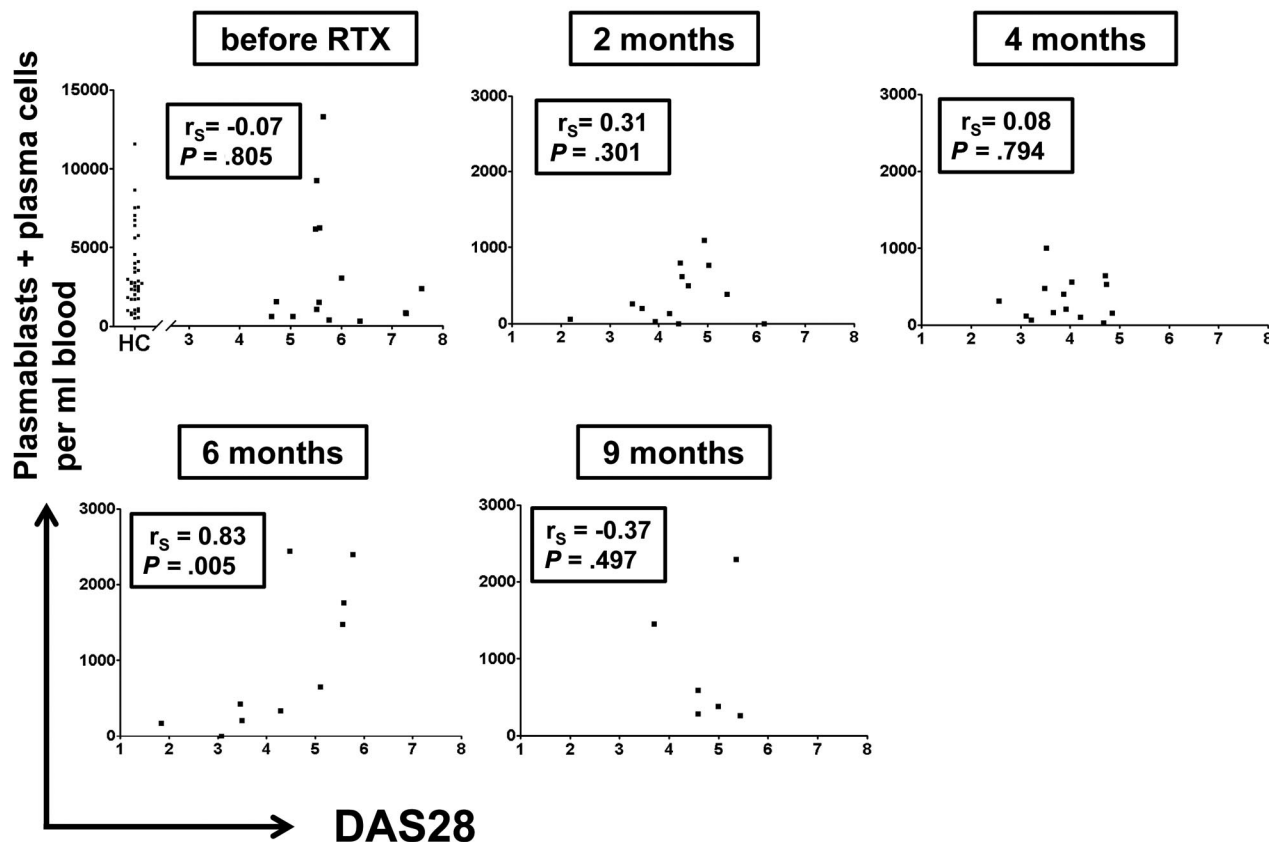


Figure 2. Total numbers of CD19⁺/CD20⁻/CD27^{high} plasmablasts/plasma cells do not consistently correlate with RA disease activity. Numbers of peripheral plasmablasts and plasma cells were plotted against RA disease activity index DAS28 at indicated time points. Each dot represents one patient. Except for 6 months after therapy, no significant correlation was detected between disease activity and plasmablast/plasma cell numbers (Spearman rank correlation analysis), suggesting that this peripheral cell population is not closely linked to disease activity. The first graph includes plasmablast/plasma cell numbers of 41 untreated healthy controls (HCs) for comparison.

Detection of dividing and migratory HLA-DR^{high} expressing plasmablasts during B-cell depletion

Subsequent analysis sought to identify whether circulating RTX-resistant antibody-secreting cells represent plasmablasts of recent generation or established, recirculating plasma cells. Before and during B-cell depletion, at least one-half of these cells showed a phenotype of recently generated plasmablasts^{1,13} in that they expressed HLA-DR^{high}. Proportions of plasmablasts versus plasma cells were similar in patients with RA compared with healthy controls without significant changes over the time of B-cell depletion, indicative of their stable turnover and their equal resistance toward RTX (Figure 5A-B; supplemental Table 2).

Functional tests of RTX-resistant steady-state cells showed, similar to previous data obtained from healthy controls, that they expressed functionally active chemokine receptors, CXCR4 and CCR10, permitting *in vitro* migration toward the homeostatic chemokine CXCL12 and mucosal tissue-expressed chemokine CCL28, respectively. Plasmablasts circulating during B-cell depletion therapy migrated toward 300nM CCL28 at a mean frequency of 19% (range, 2%-38%). At the same time, plasmablasts also migrated toward 10nM CXCL12 (mean frequency, 21%; range, 8%-48%; 5 donors). This equals the magnitude of *in vitro* migration observed when healthy control PBMC samples were tested, yielding mean frequencies of migrating plasmablasts of 21% (10nM CXCL12) and 25% (300nM CCL28), respectively (Figure 5C). Consistent with previous reports,²⁰ we demonstrate that CCL28 selectively attracts IgA-expressing plasmablasts coexpressing CCR10 (supplemental Figure 3).

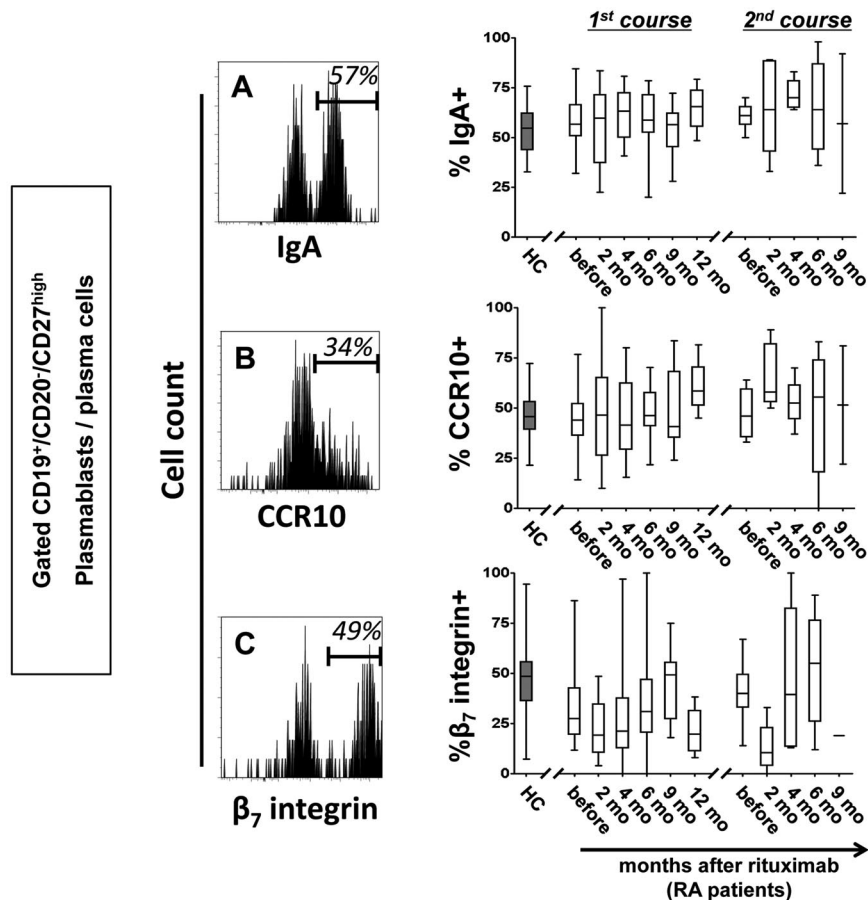
Further, RTX-resistant plasmablasts also proliferated *in vivo*, as identified by Ki-67 expression. During B-cell depletion therapy, 22%-56% (mean, 42%; 7 donors) of circulating antibody-secreting cells stained positively for the proliferation marker Ki-67, whereas the same cells were not stained by control antibody (mean, 3%; $P = .0156$, Wilcoxon test). Six healthy control samples showed a median of 62% Ki-67⁺ plasmablasts, indicating a maintained proliferative capacity of the RTX-resistant plasmablasts, however, at lower levels (Figure 5D).

These phenotypical and functional data indicate that during comprehensive depletion of CD20⁺ B cells from peripheral blood by RTX, activated; that is, proliferating and migratory plasmablasts are frequently detectable and suggest either chronic activation and differentiation of RTX-resistant precursors or the maintenance of the observed plasmablast population by continuous cell division.

Human lamina propria CD20⁺ B cells, but not IgA⁺ plasmablasts and plasma cells, are depleted by RTX

Because the bulk of the data above indicated a mucosal nature of the circulating RTX-resistant plasmablasts, we now addressed directly whether tissue-resident CD20⁺ B cells and IgA-secreting cells are affected by RTX therapy *in vivo* in the lamina propria. Therefore, we analyzed endoscopic biopsies taken from the gastrointestinal tract of 3 patients with diffuse large B-cell lymphoma during RTX treatment for CD20⁺ and IgA⁺ cells. All 3 samples did not stain with an antibody specific for human CD20, indicating the complete absence of CD20⁺ B cells in these mucosal tissue samples. By contrast, stainings for CD79a, MUM1, and IgA

Figure 3. Circulating plasmablasts and plasma cells during B-cell depletion express IgA and receptors for mucosal homing. Representative cytometric detection of IgA (A), CCR10 (B), and β_7 integrin (C) on plasmablasts and plasma cells during RTX treatment are shown. Frequencies of IgA⁺, CCR10⁺, and β_7 integrin⁺ cells were determined in 44 healthy controls (HCs; gray boxes) and in RTX-treated patients with RA throughout therapy (open boxes). Box plots depict minimum, maximum, and median values and upper and lower quartiles.



detected numerous positive cells in the lamina propria, predominantly beneath the surface epithelium. In combination with the plasmacytoid cell morphology of IgA⁺, MUM1⁺, or CD79⁺ cells and the absence of CD20 expression, the labeled cells represent IgA-secreting plasma cells. Moreover, proliferating Ki-67⁺/IgA⁺ plasmablasts were also detected at very low frequency: 2 cells of total 270 IgA⁺ plasma cells per 10 high-power fields, 1 of 167 cells and 0 of 45 cells in the tree specimen, respectively (Figure 6). These data show for the first time the resistance of human lamina propria IgA⁺ plasmablasts and plasma cells toward RTX treatment, whereas CD20⁺ B cells were entirely depleted at the same site.

Circulating plasmablasts during B-cell depletion therapy spontaneously secrete antimicrobial IgA

In autoimmune patients, circulating autoreactive plasmablasts can contribute to systemic autoantibody production. Therefore, we analyzed the nature of IgA secreted by steady-state plasmablasts after RTX therapy. PBMCs from patients depleted of B cells or healthy controls were allowed to spontaneously secrete antibody for 2 days in vitro, and supernatants were subjected to further analyses.

All samples obtained from 8 healthy controls and 23 patients depleted of B cells spontaneously secreted IgA in vitro. PBMCs

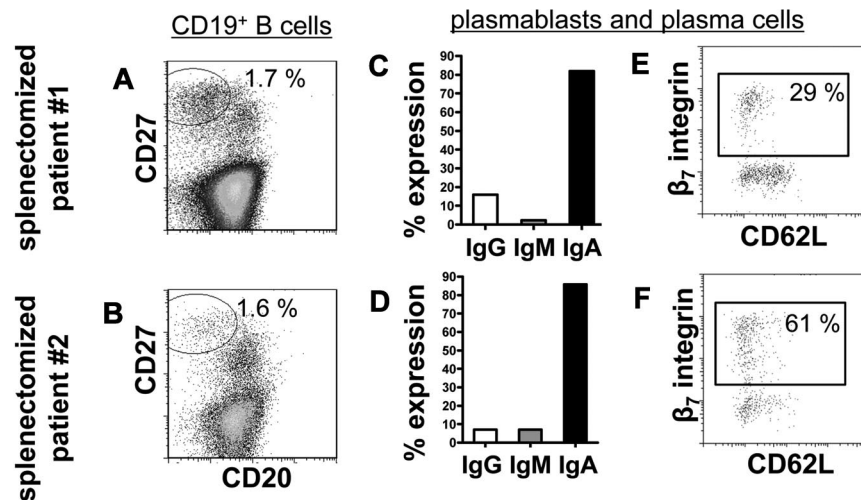


Figure 4. The frequency of circulating plasmablasts and plasma cells is not impaired in persons who have undergone splenectomy. Normal frequencies of CD19⁺/CD20⁻/CD27^{high} plasmablasts and plasma cells¹ among CD19⁺ B cells were detectable in 2 persons who underwent a splenectomy (A-B). These plasmablasts and plasma cells show characteristics of homeostatic mucosal plasmablasts in that they produce of IgA (C-D) and express β_7 integrin but rarely CD62L (E-F). Frequencies indicate proportions of gated cells among the total cell number shown in each dot plot.

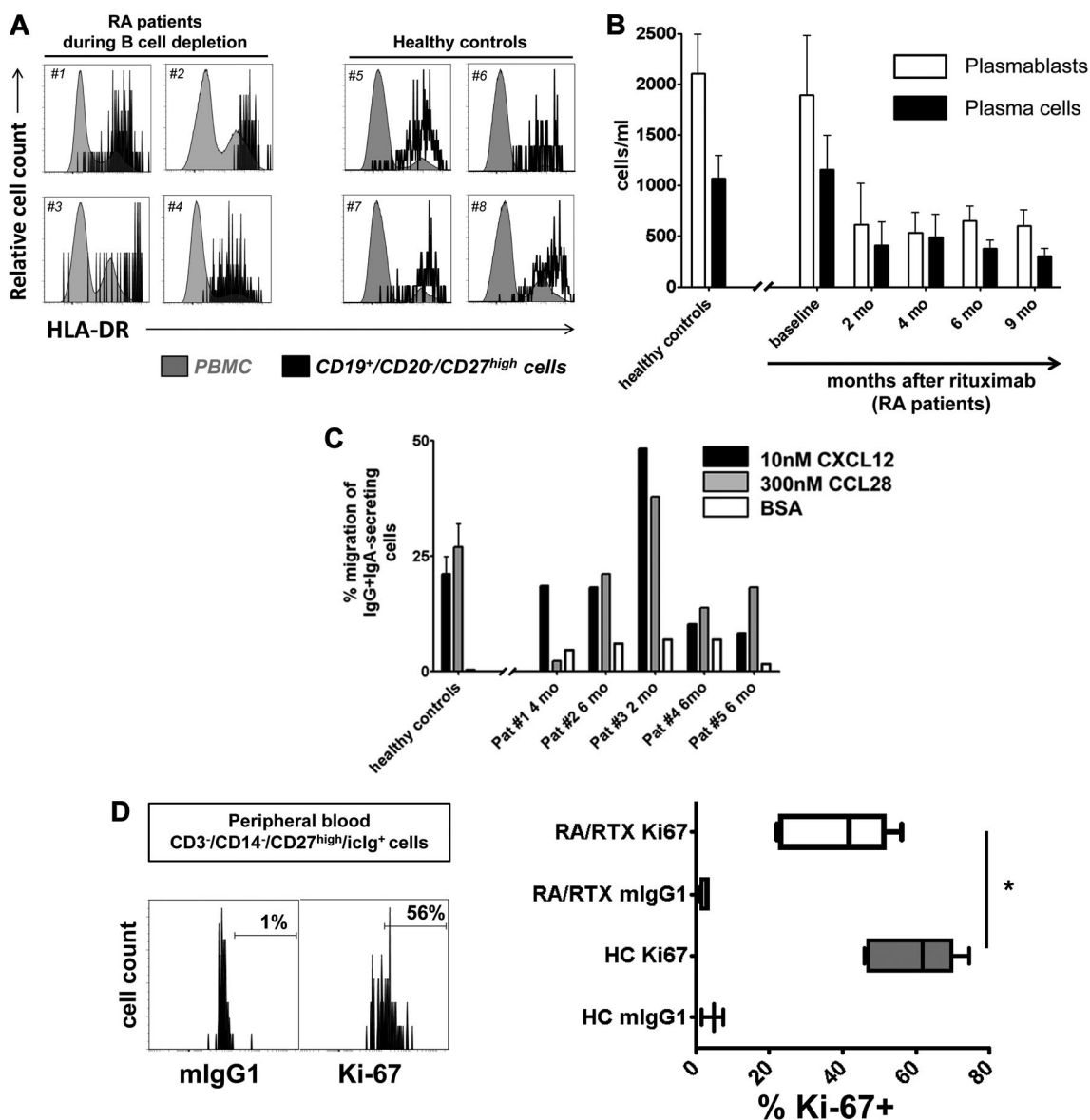


Figure 5. Generation of migratory and proliferating plasmablasts during B-cell depletion. (A) Cytometric detection of HLA-DR^{high} plasmablasts in peripheral blood samples of 4 patients with RA during B-cell depletion (#1 to #4) at 4 and 6 months, respectively, after a first cycle of RTX therapy and 2 and 4 months, respectively, after a second cycle of RTX treatment, compared with 4 healthy controls (#5 to #8). (B) Kinetics of HLA-DR^{high} plasmablast and HLA-DR^{low} plasma cell counts¹³ during peripheral blood CD20⁺ B-cell depletion. Data from 16 healthy controls are shown for comparison. (C) Plasmablasts from 4 healthy controls and 5 patients treated with RTX were tested for in vitro migration toward 300nM CCL28 and 10nM CXCL12, respectively, in 4 independent experiments. Migration toward bovine serum albumin (BSA) was used as a control and yielded 2%-7% migration of antibody-secreting cells. Mean values and SEM are depicted in panels B and C. (D) CD27^{high}/intracellular Ig^{high} plasmablasts were analyzed for cell proliferation as detected by Ki-67 expression. Ki-67⁺ expressing plasmablasts were significantly reduced in RTX-treated patients with RA (RA/RTX; 7 samples; open boxes; 3 independent experiments) compared with healthy controls (HCs; 6 samples; gray boxes; $P = .0156$ by Mann-Whitney test). Mouse (m)IgG1 of irrelevant specificity was used to control Ki-67 staining. Box plots depict minimum, maximum, and median values and upper and lower quartiles.

from persons depleted of B cells secreted 72.3% less IgA than control PBMCs, on average 59 ng IgA/10⁶ PBMC versus 213 ng IgA/10⁶ PBMCs, respectively ($P = .0112$, Mann-Whitney test; Figure 7A). IgA-rheumatoid factor was detected in 5% (2 of 37) PBMC supernatants from patients depleted of B cells and not in healthy control samples (Figure 7B). By contrast, all PBMC supernatants from patients depleted of B cells and control donors contained IgA capable of binding to at least 1 of the microbes or microbial antigens tested (*Escherichia coli*, *Enterococcus faecalis*, microbial lipopolysaccharides, and PneumoVax, ie, mixed pneumococcal polysaccharides; Figure 7C). Ninety-two percent of the same samples bound to > 1 of these antigens.

Thus, circulating plasmablasts detectable during B-cell depletion secrete antimicrobial IgA in virtually all healthy persons and

patients with RA, whereas IgA-rheumatoid factor is produced by the same cell population only in isolated patients. The overall data are consistent with the notion that these cells are generated by homeostatic mucosal immune responses while lacking a clear implication in autoimmunity.

IgA⁺ plasmablasts generated during steady-state express mutated V_HDJ_H gene rearrangements

The microbial binding capabilities of IgA secreted by RTX-resistant circulating plasmablasts and the previous observation that the peritoneum is protective against RTX-mediated B-cell depletion in mice⁷ lead us to speculate that these cells might originate from a B1-like B-cell compartment. If they were, they should carry

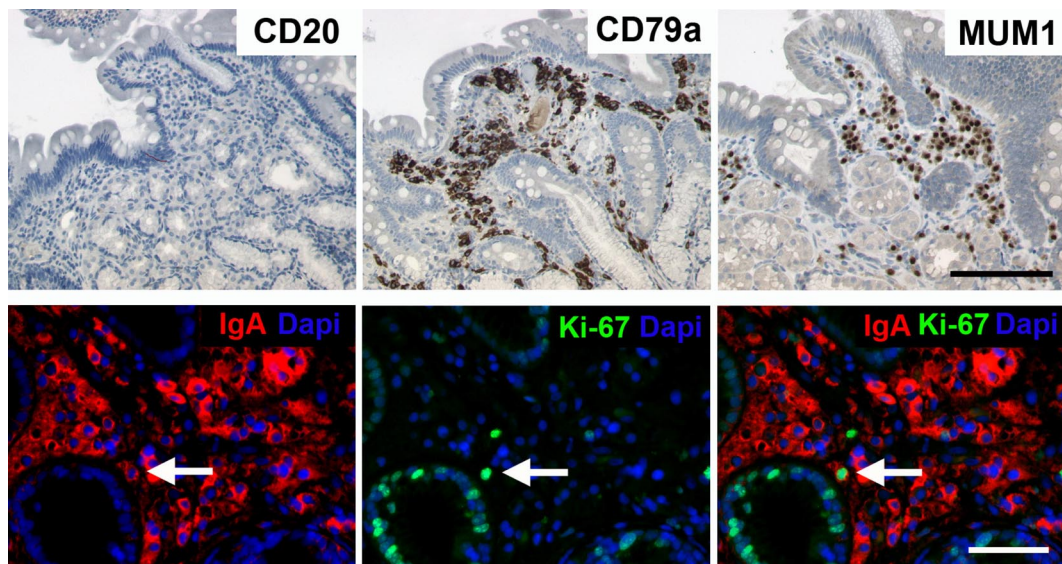


Figure 6. Detection of IgA⁺ plasmablasts and plasma cells, but not CD20⁺ cells within human mucosal biopsies during RTX treatment. Three patients with diffuse large B-cell lymphoma were treated with RTX plus cyclophosphamide, hydroxydaunomycin, Oncovin, prednisone, and control biopsies were taken after 3 months from the duodenum or stomach. A representative duodenal biopsy is shown with absence of CD20⁺ B cells, whereas numerous CD79a, MUM1, and IgA⁺ cells were detected. Virtually all cells that were stained by these markers showed plasma cell morphology, including IgA⁺/Ki67⁺ plasmablasts detectable at a low frequency (white arrow). Original magnifications, $\times 200$ (top) and $\times 400$ (bottom). Black bar indicates 100 μm ; white bar, 50 μm . Microscope was Olympus AX70 and AxioImager Z1 (Zeiss); numeric aperture of objective lenses were $\times 20$, 0.70 mm; $\times 40$, 0.90 mm. Stains used were immunoperoxide, Alexa Fluor 488/555, and DAPI (4'-6'-diamidino-2-phenylindole). Camera used was JVC KY-F70 and CCD camera (AxioCam MRm; Zeiss); acquisition software was DISKUS and Axiovision (Zeiss); and software used for image processing was Adobe Photoshop 7.0 (Adobe Systems).

weakly hypermutated V_H gene rearrangements.²¹ Therefore, we analyzed V_HDJ_H gene rearrangements to calculate the frequency of somatic hypermutation in RTX-resistant IgA⁺ plasmablasts in a total of 34 circulating IgA⁺ plasmablasts obtained from 2 healthy controls, 66 IgA⁺ plasmablasts from 3 patients after RTX treatment, as well as 69 antigen-specific IgG⁺ plasmablasts from 3 donors after tetanus vaccination.^{13,15} All cells carried somatically hypermutated V_H gene rearrangements with comparable mutational frequencies in the 3 populations analyzed: IgA⁺ plasmablasts from healthy persons showed 3-39 mutations within the V_H region with a mean mutational frequency of 8.5% (range, 1.3%-17.0%), whereas RTX-resistant IgA⁺ plasmablasts exhibited 7-48 mutations with a mean mutational frequency of 9.9% (range, 3.0%-20.3%). For comparison, antigen-specific IgG⁺ plasmablasts induced by a tetanus vaccination¹³ yielded a mutational frequency of the same magnitude (mean mutational frequency, 9.7%). These data indicate that B-cell activation and differentiation resulting in circulating IgA⁺ plasmablasts in healthy persons and in patients with RA after RTX treatment do not differ in their mutational frequency. These results do not support the view that circulating IgA⁺ plasmablasts may derive from B1-like B cells.

Discussion

B-cell depletion by RTX has become an important option in treating RA and non-Hodgkin lymphoma, although still some of its mechanisms of action remain unclear. Although comprehensive depletion by RTX of B cells from peripheral blood is widely documented, the efficiency of B-cell removal from lymphoid tissues is of critical importance to understand potential reasons for partial or complete lack of response.

This study provides evidence for continued circulation of migratory and dividing plasmablasts with high degree of similarity with previously characterized plasmablasts circulating during steady

state¹ during B-cell depletion after RTX treatment. As a consequence, this observation suggests the persistence of a distinct population of noncirculating, RTX-resistant B cells. At least one-half of these cells showed the phenotype of recently generated plasmablasts^{1,13} before and during B-cell depletion, in that they expressed HLA-DR^{high} and Ki-67, and were migratory in vitro toward ligands of CXCR4 and CCR10, thus sharing important characteristics with plasmablasts circulating in healthy persons during steady state.¹ According to the emergence of antigen-specific plasmablasts in the blood after systemic or mucosal vaccination, the age of such circulating plasmablasts can be estimated with ≤ 2 weeks.^{13,22} However, the current data do not formally exclude that some older resident plasma cells may reenter cell cycle and recirculate, although the currently available data clearly do not support this view.² Indicative of their generation in mucosal immune responses and very similar to plasmablasts circulating during steady state,¹ more than one-half of plasmablasts/plasma cells detectable before and throughout B-cell depletion therapy expressed IgA, and the same cells predominantly co-expressed CCR10 and to a lesser extent $\alpha_4\beta_7$ integrin.^{23,24} The IgA secreted by these plasmablasts in patients with RA showed rheumatoid factor reactivity only in single patients, whereas secretion of antimicrobial antibodies was detected in all patients as well as controls. In this regard, commensal microbes specifically induce secretory IgA production in the intestine of normal mice.²⁵ Because IgA is the predominant antibody isotype produced in the gut and secreted at mucosal surfaces²⁶ and is dimeric when spontaneously secreted by normal PBMC in steady state,²⁷ the detection of IgA⁺ plasmablasts in patients after B-cell depletion indicates that anti-CD20 therapy has a limited effect on this measure of mucosal immunity.

In addition, the expression of the mucosal homing receptor $\alpha_4\beta_7$ integrin by plasmablasts allow their interaction with mucosal addressin cell adhesion molecule-1 (MadCAM-1), which is expressed in the high endothelial venules of GALT,^{3,28} mediating their

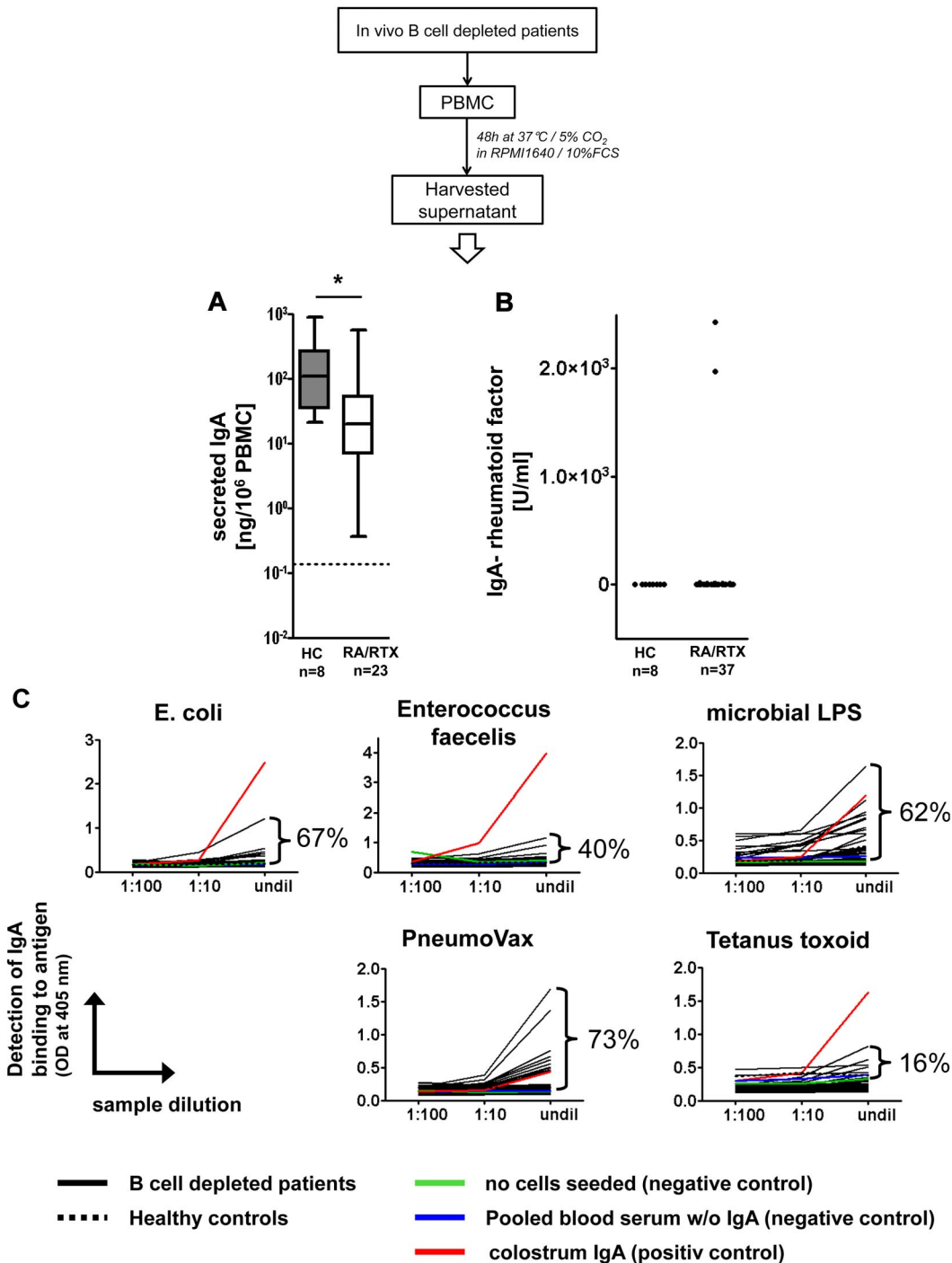


Figure 7. Plasmablasts generated during B-cell depletion secrete antimicrobial IgA. (A) Spontaneous in vitro production of IgA from PBMCs of RTX-treated patients with RA (RA/RTX; open box) and healthy controls (HCs; gray box). Dotted line indicates the detection limit. Box plots depict minimum, maximum, and median values and upper and lower quartiles. IgA produced patient samples (B) analyzed (5%), whereas all samples bound to ≥ 1 of the 4 microbes and microbial antigens tested (C). PBMC supernatants were subjected to enzyme-linked immunosorbent assay at different dilutions with the indicated antigens for coating and IgA-specific detection. Frequencies of samples from RTX-treated patients ($n = 37$; black lines) yielding optical densities exceeding negative control samples at the highest concentration (undil) are indicated and reflect proportions of samples that showed binding to a particular antigen. Almost all samples tested showed concentration-dependent binding. Binding to irrelevant protein antigen (tetanus toxoid) was used as a control assay on the same samples, yielding infrequent binding of the secreted IgA compared with microbial antigens. Colostrum IgA isolated from breast milk was used as an internal positive control, pooled blood sera depleted of IgA, and medium cultured without PBMCs as internal negative controls. All PBMC supernatants from B-cell depleted and control donors bound to ≥ 1 of the bacteria or microbial antigens. Dotted black lines indicate pooled data from 8 healthy controls.

firm arrest to gut vessel endothelium. As a result, antibody-secreting cells in the lamina propria express $\alpha_4\beta_7$ integrin.^{3,29} Further, CCR10 expression by IgA⁺ plasmablasts mediates their migration toward CCL28,^{20,30} which is expressed in gut- and airway-associated lymphoid tissues.³¹ Consistently, CCR10 is abundantly expressed by IgA-secreting cells residing within human

mucosal effector sites.³² Of critical importance, IgA⁺ plasmablasts were identified in mucosal biopsies obtained after peripheral B-cell depletion, being apparently equally resistant to RTX compared with circulating plasmablasts. The expression of $\alpha_4\beta_7$ integrin and CCR10 by circulating plasmablasts not only reflects their migrational capacity toward mucosal tissues but also suggest that they

originate from mucosal immune reactions, because *Rotavirus*-specific plasmablasts express the same phenotype during acute *Rotavirus* infection.³³ As plasmablasts observed here express combinations of IgA, CCR10, and $\alpha_4\beta_7$ integrin, and because the absence of the spleen as another potential source of plasmablasts does not extinguish circulating IgA⁺ plasmablasts, we assume that these are induced within mucosal immune reactions. Migration of plasmablasts toward CXCL12 shows functionally active CXCR4 expression, as described before for plasmablasts induced in both systemic and mucosal induced immune responses.^{2,3,34}

Hence, the underlying chronic B-cell activation most likely occurs within mucosal tissues in response to microbial stimuli and could reflect a RTX-resistant B-cell subset that exists in human inductive GALT. Coherently, antibody-mediated immunity at mucosal surfaces appears to be largely intact in RTX-treated patients, because (1) IgA-secreting plasma cells were abundantly present in lamina propria specimens patients depleted of B cells and (2) only few patients experienced complications related to impaired mucosal immunity during B-cell depletion in agreement with safety data of clinical studies.^{5,35} The resistance of B cells to RTX-mediated depletion in immune tissues has been studied before. In mouse models of B-cell depletion, B cells of the peritoneal cavity are not or less rapidly depleted,^{36,37} and germinal center B cells of the Peyer patches can be resistant to RTX.⁷ In man, depletion of tissue-based B cells by RTX was observed to a large extent in spleen, bone marrow, and kidney^{8-10,38-40} and is reflected by the inability of patients who have undergone B-cell depletion to mount a sufficient immune response upon parenteral vaccination.^{41,42}

The efficiency of B-cell depletion within human GALT has not been addressed so far except for a single case, reporting successful B-cell depletion after anti-CD20 therapy in the appendix.⁴³ The present study is the first to provide data indicative of RTX-resistant mucosal B cells in man. Such a self-sufficient mucosal plasmablast generation could significantly contribute to the human mucosal plasma cell population, as reflected by the detection of IgA⁺ plasmablasts in the lamina propria. Our data are further consistent with a previous report suggesting that lamina propria B cells do not contribute to the human (intestinal) IgA response,⁴⁴ because we did not detect any CD20⁺ B cells but proliferating IgA⁺ plasmablasts in the lamina propria.

In accordance with mouse data⁴⁵ and the self-sufficiency of mucosal plasmablast production in steady state, their generation and/or maintenance was not abrogated in persons who had undergone a splenectomy. Splenectomized mice further lack peritoneal cavity B1a cells,⁴⁶ suggesting that an equivalent population would not contribute to circulating IgA⁺ plasmablasts in man. Consistent with this notion, all circulating IgA⁺ plasmablasts analyzed during the steady state of healthy persons and RTX-treated patients expressed highly mutated V_HDJ_H gene rearrange-

ments. The expression of those supports their differentiation from antigen-experienced B cells as precursors of mucosal plasmablasts circulating in steady state and B-cell depletion.

In this regard, sessile mucosal memory B cells have been described in the mucosal epithelium⁴⁷ and beneath microfold (M) cells within mucosal isolated lymphoid follicles.⁴⁸ Of note, malignant mucosa-associated lymphoid tissue B cells also express mutated V_H rearrangements⁴⁹ and can survive RTX treatment within epithelial cell aggregates,¹² suggesting a possible link between RTX-resistant mucosal B cells as a source for plasmablast production in steady state. With respect to RA, no stringent numerical or functional correlation was identified between residual disease activity and the persistent generation of IgA⁺ plasmablasts in these patients, so that persisting autoantibody titers observed during RTX treatment⁶ appear to be provided by long-lived plasma cells surviving the treatment in bone marrow and synovia.^{38,40}

Although scientific and clinical implications require additional research, the present data of this study point toward a RTX-resistant subset of human mucosal B cells chronically differentiating into circulating mucosal IgA⁺ plasmablasts.

Acknowledgments

We thank T. Kaiser, K. Raba, and J. Kirsch for excellent assistance with cell sorting and Drs J. Benckert and H. Wardemann for kind provision of bacteria. We thank Simone Spieckermann for excellent technical assistance. We also thank all rheumatologists involved in the study.

This work was supported by the Deutsche Forschungsgemeinschaft through grants SFB421/B13 (T.D.), SFB650/TP16 (T.D.), and Z3 (C.L.), DFG Do7-1 (T.D.), SPP Immunobone Do 8-1 (T.D. and H.E.M.), by the Deutsche Gesellschaft für Rheumatologie through the DGRh start-up grant (H.E.M.), by the Charité University Medicine, and the Berlin Senate.

Authorship

Contribution: H.E.M., D.F., C.G., C.L., K.R., and S.S. performed research and analyzed results; H.E.M. and C.L. made the figures; H.E.M. and T.D. designed research; H.E.M., T.D., and A.R. discussed results and wrote the manuscript; and H.-P.T., C.D., and E.F. discussed results and provided vital material for the study.

Conflict-of-interest disclosure: T.D. and E.F. have received support for conducting clinical studies and speakers' honoraria (<\$10 000) from Roche. The remaining authors declare no competing financial interests.

Correspondence: Henrik E. Mei, B Cell Memory Group, Deutsches Rheumaforschungszentrum (DRFZ), Charitéplatz 1, 10117 Berlin, Germany; e-mail: mei@drfz.de.

References

- Mei HE, Yoshida T, Sime W, et al. Blood-borne human plasma cells in steady state are derived from mucosal immune responses. *Blood*. 2009; 113(11):2461-2469.
- Radbruch A, Muehlinghaus G, Luger EO, et al. Competence and competition: the challenge of becoming a long-lived plasma cell. *Nat Rev Immunol*. 2006;6(10):741-750.
- Kunkel EJ, Butcher EC. Plasma-cell homing. *Nat Rev Immunol*. 2003;3(10):822-829.
- Molina A. A decade of rituximab: improving survival outcomes in non-Hodgkin's lymphoma. *Annu Rev Med*. 2008;59:237-250.
- Edwards JC, Szczepanski L, Szechinski J, et al. Efficacy of B-cell-targeted therapy with rituximab in patients with rheumatoid arthritis. *N Engl J Med*. 2004;350(25):2572-2581.
- Cambridge G, Leandro MJ, Edwards JC, et al. Serologic changes following B lymphocyte depletion therapy for rheumatoid arthritis. *Arthritis Rheum*. 2003;48(8):2146-2154.
- Gong Q, Ou Q, Ye S, et al. Importance of cellular microenvironment and circulatory dynamics in B cell immunotherapy. *J Immunol*. 2005;174(2): 817-826.
- Cioc AM, Vanderwerf SM, Peterson BA, Robu VG, Forster CL, Pambuccian SE. Rituximab-induced changes in hematolymphoid tissues found at autopsy. *Am J Clin Pathol*. 2008;130(4): 604-612.
- Mamani-Matsuda M, Cosma A, Weller S, et al. The human spleen is a major reservoir for long-lived vaccinia virus-specific memory B cells. *Blood*. 2008;111(9):4653-4659.
- Kneitz C, Wilhelm M, Tony HP. Effective B cell

- depletion with rituximab in the treatment of autoimmune diseases. *Immunobiology*. 2002;206(5):519-527.
11. Conconi A, Martinelli G, Thiebtemont C, et al. Clinical activity of rituximab in extranodal marginal zone B-cell lymphoma of MALT type. *Blood*. 2003;102(8):2741-2745.
 12. Raderer M, Jager G, Brugger S, et al. Rituximab for treatment of advanced extranodal marginal zone B cell lymphoma of the mucosa-associated lymphoid tissue lymphoma. *Oncology*. 2003;65(4):306-310.
 13. Odendahl M, Mei H, Hoyer BF, et al. Generation of migratory antigen-specific plasma blasts and mobilization of resident plasma cells in a secondary immune response. *Blood*. 2005;105(4):1614-1621.
 14. Rott LS, Briskin MJ, Butcher EC. Expression of alpha4beta7 and E-selectin ligand by circulating memory B cells: implications for targeted trafficking to mucosal and systemic sites. *J Leukoc Biol*. 2000;68(6):807-814.
 15. Frölich D, Giesecke C, Mei HE, et al. Secondary immunization generates clonally related antigen-specific plasma cells and memory B cells. *J Immunol*. 2010;185(5):3103-3110.
 16. Hansen A, Gosemann M, Pruss A, et al. Abnormalities in peripheral B cell memory of patients with primary Sjogren's syndrome. *Arthritis Rheum*. 2004;50(6):1897-1908.
 17. National Center for Biotechnology Information. BLAST: Basic Local Alignment Search Tool. <http://www.ncbi.nlm.nih.gov>. Accessed April 2008-April 2010.
 18. National Institutes of Health, National Institute of Arthritis and Musculoskeletal and Skin Diseases. JOINSOLVER. <http://joinsolver.niams.nih.gov>. Accessed April 2008-April 2010.
 19. Klein U, Rajewsky K, Kuppers R. Human immunoglobulin (Ig)M+IgD+ peripheral blood B cells expressing the CD27 cell surface antigen carry somatically mutated variable region genes: CD27 as a general marker for somatically mutated (memory) B cells. *J Exp Med*. 1998;188(9):1679-1689.
 20. Lazarus NH, Kunkel EJ, Johnston B, Wilson E, Youngman KR, Butcher EC. A common mucosal chemokine (mucosa-associated epithelial chemokine/CCL28) selectively attracts IgA plasma blasts. *J Immunol*. 2003;170(7):3799-3805.
 21. Stoel M, Jiang HQ, van Diemen CC, et al. Restricted IgA repertoire in both B-1 and B-2 cell-derived gut plasmablasts. *J Immunol*. 2005;174(2):1046-1054.
 22. Kantele A, Hakkinen M, Moldoveanu Z, et al. Differences in immune responses induced by oral and rectal immunizations with Salmonella typhi Ty21a: evidence for compartmentalization within the common mucosal immune system in humans. *Infect Immun*. 1998;66(12):5630-5635.
 23. Kutteh WH, Koopman WJ, Conley ME, Egan ML, Mestecky J. Production of predominantly polymeric IgA by human peripheral blood lymphocytes stimulated in vitro with mitogens. *J Exp Med*. 1980;152(5):1424-1429.
 24. Johansen FE, Baekkevold ES, Carlsen HS, Farstad IN, Soler D, Brandtzaeg P. Regional induction of adhesion molecules and chemokine receptors explains disparate homing of human B cells to systemic and mucosal effector sites: dispersion from tonsils. *Blood*. 2005;106(2):593-600.
 25. Macpherson AJ, Gatto D, Sainsbury E, Harriman GR, Hengartner H, Zinkernagel RM. A primitive T cell-independent mechanism of intestinal mucosal IgA responses to commensal bacteria. *Science*. 2000;288(5474):2222-2226.
 26. Pabst R, Russell MW, Brandtzaeg P. Tissue distribution of lymphocytes and plasma cells and the role of the gut. *Trends Immunol*. 2008;29(5):206-208; author reply 209-210.
 27. Kutteh WH, Prince SJ, Mestecky J. Tissue origins of human polymeric and monomeric IgA. *J Immunol*. 1982;128(2):990-995.
 28. Butcher EC. The multistep model of leukocyte trafficking: a personal perspective from 15 years later. In: Hamann A, Engelhardt B, eds. *Leukocyte Trafficking*. Weinheim, Germany: Wiley-VCH; 2005:3-13.
 29. Farstad IN, Halstensen TS, Lazarovits AI, Norstein J, Fausa O, Brandtzaeg P. Human intestinal B-cell blasts and plasma cells express the mucosal homing receptor integrin alpha 4 beta 7. *Scand J Immunol*. 1995;42(6):662-672.
 30. Feng N, Jaimes MC, Lazarus NH, et al. Redundant role of chemokines CCL25/TECK and CCL28/MEC in IgA+ plasmablast recruitment to the intestinal lamina propria after rotavirus infection. *J Immunol*. 2006;176(10):5749-5759.
 31. Wang W, Soto H, Oldham ER, et al. Identification of a novel chemokine (CCL28), which binds CCR10 (GPR2). *J Biol Chem*. 2000;275(29):22313-22323.
 32. Kunkel EJ, Kim CH, Lazarus NH, et al. CCR10 expression is a common feature of circulating and mucosal epithelial tissue IgA Ab-secreting cells. *J Clin Invest*. 2003;111(7):1001-1010.
 33. Jaimes MC, Rojas OL, Kunkel EJ, et al. Maturation and trafficking markers on rotavirus-specific B cells during acute infection and convalescence in children. *J Virol*. 2004;78(20):10967-10976.
 34. Nie Y, Waite J, Brewer F, Sunshine MJ, Littman DR, Zou YR. The role of CXCR4 in maintaining peripheral B cell compartments and humoral immunity. *J Exp Med*. 2004;200(9):1145-1156.
 35. Cohen SB, Emery P, Greenwald MW, et al. Rituximab for rheumatoid arthritis refractory to anti-tumor necrosis factor therapy: Results of a multicenter, randomized, double-blind, placebo-controlled, phase III trial evaluating primary efficacy and safety at twenty-four weeks. *Arthritis Rheum*. 2006;54(9):2793-2806.
 36. Hamaguchi Y, Uchida J, Cain DW, et al. The peritoneal cavity provides a protective niche for B1 and conventional B lymphocytes during anti-CD20 immunotherapy in mice. *J Immunol*. 2005;174(7):4389-4399.
 37. Hamel K, Doodes P, Cao Y, et al. Suppression of proteoglycan-induced arthritis by anti-CD20 B Cell depletion therapy is mediated by reduction in autoantibodies and CD4+ T cell reactivity. *J Immunol*. 2008;180(7):4994-5003.
 38. Teng YK, Levarht EW, Hashemi M, et al. Immunohistochemical analysis as a means to predict responsiveness to rituximab treatment. *Arthritis Rheum*. 2007;56(12):3909-3918.
 39. Leandro MJ, Cooper N, Cambridge G, Ehrenstein MR, Edwards JC. Bone marrow B-lineage cells in patients with rheumatoid arthritis following rituximab therapy. *Rheumatology (Oxford)*. 2007;46(1):29-36.
 40. Rehnberg M, Amu S, Tarkowski A, Bokarewa MI, Brissler M. Short- and long-term effects of anti-CD20 treatment on B cell ontogeny in bone marrow of patients with rheumatoid arthritis. *Arthritis Res Ther*. 2009;11(4):R123.
 41. van der Kolk LE, Baars JW, Prins MH, van Oers MH. Rituximab treatment results in impaired secondary humoral immune responsiveness. *Blood*. 2002;100(6):2257-2259.
 42. van Assen S, Holvast A, Benne CA, et al. Humoral responses after influenza vaccination are severely reduced in patients with rheumatoid arthritis treated with rituximab. *Arthritis Rheum*. 2010;62(1):75-81.
 43. Paran D, Trej' o L, Caspi D. Clinical images: B cell depletion in the appendix following rituximab treatment. *Arthritis Rheum*. 2006;54(7):2151.
 44. Boursier L, Gordon JN, Thiagamoorthy S, Edgeworth JD, Spencer J. Human intestinal IgA response is generated in the organized gut-associated lymphoid tissue but not in the lamina propria. *Gastroenterology*. 2005;128(7):1879-1889.
 45. Macpherson AJ, Lamarre A, McCoy K, et al. IgA production without mu or delta chain expression in developing B cells. *Nat Immunol*. 2001;2(7):625-631.
 46. Wardemann H, Boehm T, Dear N, Carsetti R. B-1a B cells that link the innate and adaptive immune responses are lacking in the absence of the spleen. *J Exp Med*. 2002;195(6):771-780.
 47. Liu YJ, Barthelemy C, de Bouteiller O, Arpin C, Durand I, Banchereau J. Memory B cells from human tonsils colonize mucosal epithelium and directly present antigen to T cells by rapid up-regulation of B7-1 and B7-2. *Immunity*. 1995;2(3):239-248.
 48. Neutra MR, Mantis NJ, Kraehenbuhl JP. Collaboration of epithelial cells with organized mucosal lymphoid tissues. *Nat Immunol*. 2001;2(11):1004-1009.
 49. Craig VJ, Arnold I, Gerke C, et al. Gastric MALT lymphoma B cells express polyreactive, somatically mutated immunoglobulins. *Blood*. 2010;115(3):581-591.