

Dysregulation of bone remodeling by imatinib mesylate

Kate Vandyke,^{1,2} Stephen Fitter,¹ Andrea L. Dewar,¹ Timothy P. Hughes,^{2,3} and Andrew C. W. Zannettino^{1,2}

¹Myeloma and Mesenchymal Research Laboratory, Division of Haematology, Centre for Cancer Biology, Hanson Institute, Institute of Medical and Veterinary Science, Adelaide; ²School of Medicine, University of Adelaide, Adelaide; and ³Division of Haematology, Centre for Cancer Biology, Hanson Institute, Institute of Medical and Veterinary Science, Adelaide, Australia

Imatinib mesylate is a rationally designed tyrosine kinase inhibitor that has revolutionized the treatment of chronic myeloid leukemia and gastrointestinal stromal tumors. Although the efficacy and tolerability of imatinib are a vast improvement over conventional chemotherapies, the drug exhibits off-target effects. An unanticipated side effect of imatinib therapy is hypophosphatemia and hypocalcemia, which in part has been attributed to drug-

mediated changes to renal and gastrointestinal handling of phosphate and calcium. However, emerging data suggest that imatinib also targets cells of the skeleton, stimulating the retention and sequestration of calcium and phosphate to bone, leading to decreased circulating levels of these minerals. The aim of this review is to highlight our current understanding of the mechanisms surrounding the effects of imatinib on the skeleton. In

particular, it examines recent studies suggesting that imatinib has direct effects on bone-resorbing osteoclasts and bone-forming osteoblasts through inhibition of c-fms, c-kit, carbonic anhydrase II, and the platelet-derived growth factor receptor. The potential application of imatinib in the treatment of cancer-induced osteolysis will also be discussed. (Blood. 2010;115:766-774)

Introduction

Imatinib mesylate (Gleevec/Gleevec, STI571, CGP 57148B; Novartis) is a 2-phenylaminopyrimidine derivative that binds to the adenosine triphosphate (ATP)-binding site of a select group of protein tyrosine kinases, thereby precluding ATP-binding and inhibiting kinase activity.¹ Imatinib was originally discovered during a small molecule screen for specific inhibitors of tyrosine kinase activity and was subsequently found to have specificity for BCR-Abl, c-kit, and platelet-derived growth factor receptor (PDGFR), suggesting its application in tumors and nonmalignant proliferative disorders characterized by dysregulated activity of these kinases.¹ Imatinib was the first small-molecule tyrosine kinase inhibitor to be successfully used in the clinic. It is currently the “gold standard” treatment for Philadelphia chromosome-positive chronic myeloid leukemia (CML) in chronic phase and for gastrointestinal stromal tumors (GISTs), based on its inhibition of BCR-Abl and c-kit, respectively.

Although imatinib was designed to specifically target BCR-Abl, many off-target kinases are affected by imatinib. At pharmaceutically obtainable concentrations ($C_{\max} = 4.6\mu\text{M}$ at 400 mg/day),² imatinib inhibits the tyrosine kinases Abl ($IC_{50} = 0.22\mu\text{M}$),³ the abl-related gene product ($IC_{50} = 0.5\mu\text{M}$),⁴ collagen-induced discoidin domain receptor 1 ($IC_{50} = 0.34\mu\text{M}$)⁵ and DDR2 ($IC_{50} = 0.68\mu\text{M}$),⁵ the PDGFR family members stem cell factor receptor (c-kit; $0.1\mu\text{M}$),⁶ PDGFR- α and - β ($IC_{50} = 0.1\mu\text{M}$)⁶ and the macrophage colony stimulating factor (M-CSF) receptor, c-fms ($IC_{50} = 1.4\mu\text{M}$).⁷ In addition, imatinib has recently been determined to potently inhibit the nontyrosine kinase targets NAD(P)H:quinone oxidoreductase 2 ($IC_{50} = 0.08\mu\text{M}$)^{8,9} and some members of the carbonic anhydrase (CA) family of metalloproteases, including human CA (hCA) II ($IC_{50} = 0.03\mu\text{M}$) and hCA XIV ($IC_{50} = 0.47\mu\text{M}$).¹⁰

Altered calcium and phosphate metabolism in imatinib-treated patients

Considering the wide range of signaling pathways inhibited by imatinib, one might expect that imatinib therapy would be associated with severe adverse effects. However, imatinib is well tolerated, compared with traditional chemotherapies, with adverse effects that are commonly only mild to moderate, including edema, musculoskeletal pain, muscle cramps, nausea, diarrhea, and rash.^{2,11} An additional common and unexpected side effect of imatinib therapy is disturbed calcium and phosphate metabolism, as evidenced by decreased serum phosphate and calcium levels.

Altered phosphate metabolism was first reported in patients receiving imatinib therapy for GIST, CML, and sarcoma by Berman et al.¹² These studies showed that a subgroup (25 of 49) of imatinib-treated patients had low serum phosphate levels, compared with healthy controls. This group received significantly higher doses of imatinib than patients with normal serum phosphate levels. Furthermore, this group of patients also exhibited significantly lower total calcium and, subsequently, significantly higher serum parathyroid hormone (PTH) levels than the group of imatinib-treated patients with normal phosphate levels. These findings were consistent with results from 2 clinical trials, which showed that 50% of patients receiving imatinib exhibited hypophosphatemia of grade 2 or above at some stage during imatinib therapy.¹³

Subsequent to this report, several other groups have reported altered phosphate metabolism as a side effect of imatinib treatment. A longitudinal study of GIST patients receiving imatinib for 3 to 24 months found that 10 of 11 patients had lower mean plasma phosphate levels during treatment compared with baseline levels.¹⁴ Similarly, a prospective study of 9 CML patients found that,

relative to baseline, phosphate levels were significantly decreased after 3, 6, and 18 months of imatinib treatment.^{15,16} In a retrospective study of 17 CML patients receiving imatinib therapy over 17 to 69 months, there was a significant decrease in serum phosphate levels, compared with baseline.¹⁷ In the largest study to date, Osorio et al¹⁸ reported that 36 CML patients showed a significant decrease in serum phosphate levels after 3 months of imatinib treatment that was sustained until the final analysis at 12 months.

These studies strongly suggest that imatinib treatment results in decreased serum phosphate levels,¹⁴⁻¹⁸ resulting in hypophosphatemia in at least 50% of patients.¹²⁻¹⁴ In addition, these patients exhibit an increase in serum levels of PTH, secondary to decreased calcium levels, and increased serum 1,25 hydroxyvitamin D₃.^{12,15-18}

Homeostatic control of serum phosphate and calcium levels is achieved via 3 mechanisms: (1) resorption of phosphate and calcium by the kidneys, (2) absorption of dietary phosphate and calcium by the gut, and (3) dissolution of phosphate and calcium from bone. Therefore, it is conceivable that reduced levels of calcium and phosphate seen in imatinib-treated patients could result from one or a combination of the following mechanisms: decreased intestinal absorption of phosphate and calcium, increased urinary loss of phosphate and calcium, decreased dissolution of calcium and phosphate from bone, or sequestration of phosphate and calcium from extracellular fluid into the bone.

It is doubtful that the decreased serum calcium and phosphate levels result from gastrointestinal malabsorption. Although approximately 50% of imatinib-treated CML and GIST patients experience nausea and diarrhea,^{19,20} which could result in increased loss of electrolytes, the severity of these conditions is usually mild to moderate and probably does not result in a sustained loss of calcium and phosphate.

Several case reports suggest that imatinib therapy may be associated with renal dysfunction. Kitiyakara and Atichartakarn²¹ described a 67-year-old man with preexisting chronic renal failure who developed acute renal failure after commencement of treatment with cytarabine and imatinib for blast-phase CML. In another case study, a 58-year-old woman developed acute renal failure with tubular necrosis after starting imatinib therapy for CML.²² Another report described a patient with hematuria who commenced treatment with imatinib and subsequently developed proximal tubular renal dysfunction (partial Fanconi syndrome) and hypophosphatemia.²³ The paucity of reports describing acute renal dysfunction with imatinib therapy suggests that this may only occur in patients with preexisting kidney problems.

Nonetheless, imatinib therapy is associated with decreased reabsorption of phosphate by the kidneys, suggesting that increased renal phosphate output may be causing the observed decreases in serum phosphate.²³ Berman et al¹² reported increased urinary phosphate output in patients undergoing imatinib therapy compared with normal controls. Another study reported that maximal tubular resorption of phosphate was significantly decreased, relative to baseline levels, at 3, 6, and 18 months of imatinib treatment of CML patients.^{15,16}

The analysis of serum hormone levels in imatinib-treated patients suggests that the observed phosphaturia may be secondary to increased PTH. A decrease in serum calcium levels stimulates PTH secretion from the parathyroid gland. This hormone acts on bone-resorbing osteoclast cells in the bone marrow to increase dissolution of calcium and phosphate from the bone, increase renal resorption of calcium and excretion of phosphate, and stimulate the production of 1,25 dihydroxyvitamin D₃ via the activation of 1- α hydroxylase enzyme.²⁴ 1,25 dihydroxyvitamin D₃ stimulates in-

creased phosphate and calcium resorption by the gut and reduces phosphate excretion by the proximal tubule in the kidneys.²⁴ Hypophosphatemia caused by renal phosphate wasting is usually associated with decreased serum levels of 1,25 dihydroxyvitamin D₃ and normal levels of PTH. However, in imatinib-treated patients, the decreased serum phosphate is associated with increased serum PTH and 1,25 dihydroxyvitamin D₃.^{12,15,16,18} As PTH stimulates the proximal tubule in the kidney to decrease tubular resorption of phosphate, the increased urinary phosphate levels are probably secondary to increased serum PTH, rather than a direct inhibitory effect of imatinib on the kidneys. Although it cannot be ruled out that kidney problems may contribute to the decreased serum phosphate levels, there has been no evidence presented thus far to demonstrate a direct toxic effect of imatinib on the kidneys.

Decreased serum calcium and phosphate levels could result from sequestration of these minerals to bone via a decrease in bone resorption and/or an increase in bone deposition (Figure 1), as has been described in patients treated with the bisphosphonate zoledronic acid.²⁵⁻²⁷ In support of this hypothesis, there is growing evidence that patients undergoing imatinib therapy experience dysregulated bone remodeling. In the remainder of this review, we will discuss the possibility that these changes result from direct inhibitory effects on the bone-resorbing osteoclast cells and antiproliferative and prodifferentiation effects on bone-forming osteoblast cells. In addition, we will discuss the potential applications for this in the treatment of diseases characterized by dysregulated bone remodeling.

Effects of imatinib on bone

Recently, evidence has been published indicating that changes in bone parameters may occur in imatinib-treated patients. Studies from our group have shown that, relative to baseline, CML patients receiving imatinib for periods in excess of 17 months exhibited significantly increased iliac spine trabecular bone volumes.¹⁷ Almost half of the patients (8 of 17), including 4 patients who had a significant degree of osteoporosis at initial diagnosis, had an increase in trabecular bone volume of greater than 2-fold. The changes in trabecular bone volume inversely correlated with serum phosphate and total calcium levels. Conversely, no changes in trabecular bone volume were observed in a cohort of CML patients who responded to interferon- α therapy, suggesting that these changes were not related to decreased occupation of the marrow by tumor but were the result of the actions of imatinib.

In a subsequent study by Jönsson et al,²⁸ regional bone mineral density (BMD) was examined in CML patients treated with imatinib for 24 to 73 months. Imatinib-treated patients had significantly higher areal lumbar spine and total hip BMD compared with normal aged-matched controls, as determined by dual-energy x-ray absorptiometry. In addition, peripheral quantitative computed tomography analysis revealed that the radial and tibial cortical BMD, but not trabecular BMD, was significantly higher in the imatinib-treated group than in the control group. This was associated with decreased serum phosphate and calcium, as well as a decrease in serum levels of bone formation markers.

In a prospective study, O'Sullivan et al¹⁶ measured BMD in 9 CML patients receiving imatinib therapy over a 24-month period. They observed a small, but significant, increase in vertebral BMD and a trend toward an increase in total body BMD by 12 months; however, no change in proximal femur BMD was observed.

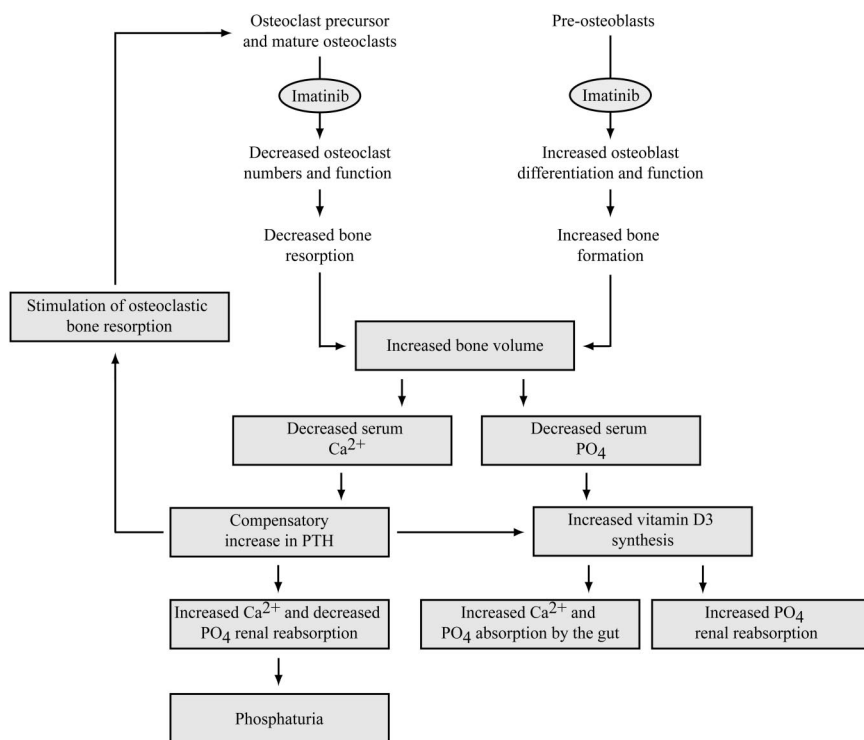


Figure 1. Proposed model for the effects of imatinib on bone metabolism and serum calcium and phosphate metabolism. Decreased dissolution of calcium and phosphate from the bone, or increased deposition of calcium and phosphate in newly formed bone, may result in decreased serum calcium and phosphate levels in imatinib-treated patients. The decrease in serum phosphate results in increased 1,25 dihydroxyvitamin D₃ production, which in turn stimulates increased phosphate and calcium resorption by the gut and decreases phosphate excretion by the kidneys. Decreased serum calcium causes increased PTH production, increasing calcium reabsorption and phosphate excretion by the kidney and stimulating a further increase in 1,25 dihydroxyvitamin D₃. PTH also stimulates bone resorption to release calcium and phosphate from bone; however, this may be inhibited by imatinib. Decreased absorption of phosphate and calcium resulting from gastrointestinal problems and decreased tubular resorption of phosphate may, in some cases, also contribute to the decreased levels of serum calcium and phosphate in imatinib-treated patients (not shown).

Preliminary *in vivo* studies support the hypothesis that imatinib treatment results in increased bone volume. In skeletally immature 4-week-old male C3H mice, treatment with 110 mg/kg per day or 150 mg/kg per day imatinib for 10 weeks resulted in a small, but significant, increase in tibial trabecular BMD (assessed by dual-energy x-ray absorptiometry) and bone volume (BV/TV; assessed by micro-CT).^{29,30} This augmentation of BMD and BV/TV was associated with an increase in trabecular number and a decrease in trabecular separation.

Collectively, these data strongly suggest that imatinib alters bone remodeling in animals and patients. Although the mechanism(s) remain to be fully elucidated, these changes in bone remodeling parameters may be the result of a decrease in bone resorption that is not corrected by a concomitant decrease in osteoblast activity or, conversely, the result of an increase in osteoblast activity that is not balanced by an increase in osteoclast activity, or both. These effects would theoretically result in a decrease in the dissolution of calcium and phosphate from bone, or an increase in the sequestration of calcium and phosphate to bone, resulting in decreased serum levels of phosphate and calcium. In support of this hypothesis, there is growing evidence that imatinib has direct effects on the proliferation and activity of cells involved in maintaining bone homeostasis: the bone resorbing osteoclasts and the bone-forming osteoblasts.

Evidence for an antiosteoclastic effect of imatinib

Osteoclasts are large, multinucleated hematopoietic cells of the monocyte/macrophage lineage that are capable of resorbing mineralized bone. Secretion of protons and proteases from osteoclasts breaks down the mineral and protein components of the bone matrix, respectively. The formation of osteoclasts from monocyte/

macrophage precursor cells *in vitro* is largely dependent on 2 factors: receptor activator of nuclear factor- κ B ligand (RANKL), which drives osteoclast fusion, activity, and survival,³¹⁻³³ and M-CSF, which is essential for the proliferation and survival of the osteoclast precursor cells and for survival of the mature osteoclast.³⁴⁻³⁸

In vitro, studies show that imatinib directly inhibits osteoclastogenesis, with treatment reducing the formation of tartrate-resistant acid phosphatase (TRAP)-positive osteoclasts from human CD14⁺ peripheral blood mononuclear cells, primary rat bone marrow cells, and primary rabbit bone marrow-derived monocytes at concentrations of 1 μ M and greater.³⁹⁻⁴¹ In addition, imatinib inhibits the bone-resorptive activity of human osteoclasts at concentrations lower than those required to decrease osteoclast numbers, with 0.3 μ M imatinib and higher significantly decreasing their capacity to resorb a dentine substrate.³⁹

There is also evidence that imatinib inhibits the survival of osteoclast precursors and mature osteoclasts *in vitro*. The proliferation, survival, and activity of primary human monocyte/macrophage lineage cells were inhibited by imatinib at concentrations of 1.5 μ M and greater.^{42,43} In cultures of murine bone marrow cells, imatinib treatment was found to dose-dependently decrease the number of viable cells, relative to vehicle controls.^{40,44} In addition, in pure cultures of mature osteoclasts, imatinib treatment reversed the antiapoptotic effect of M-CSF treatment, resulting in increased caspase-dependent apoptosis.⁴¹ In contrast, imatinib treatment had no effect on apoptosis of cells cultured in interleukin-1 α (IL-1 α), RANKL, or without cytokines.⁴¹

Consistent with these *in vitro* findings, analyses of serum markers of bone turnover suggest that osteoclast activity may be decreased in imatinib-treated patients. Berman et al¹² observed that patients treated with imatinib had significantly lower levels of the bone resorption marker CTX-1 compared with healthy controls.

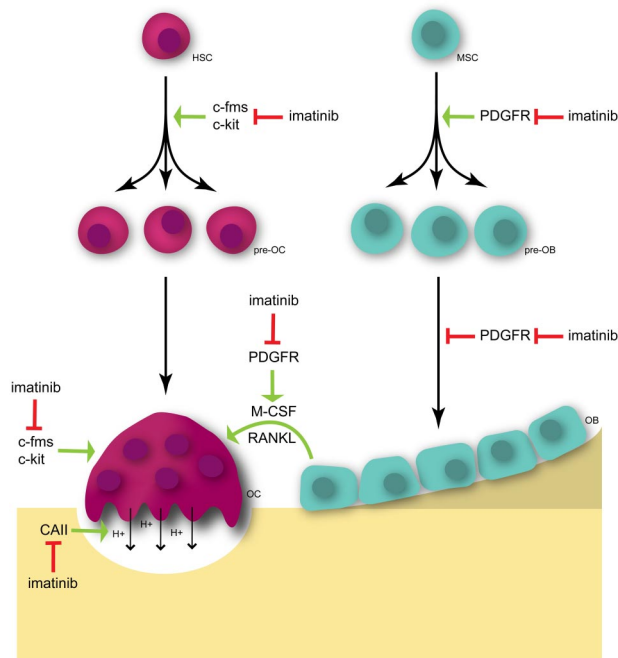


Figure 2. Hypothetical schema for the effects of imatinib on osteoclasts and osteoblasts. The proliferation and survival of osteoclast precursors (pre-OC) and the survival of mature osteoclasts (OC) are driven by M-CSF signaling through the receptor tyrosine kinase c-fms. The inhibition of c-fms signaling by imatinib decreases osteoclast numbers and activity. In addition, inhibition of c-kit may decrease pre-OC numbers and inhibit osteoclast activity. Imatinib also inhibits the progenitor-generating activity of CAII, preventing the dissolution of mineral from bone and, hence, inhibiting bone resorption. Further, the inhibition of PDGFR signaling on osteoblasts (OB) inhibits the production of osteoclastogenic cytokines, including M-CSF and RANKL. In addition, inhibition of PDGFR by imatinib in pre-osteoblasts (pre-OB) and osteoblasts (OB) inhibits cell proliferation but also relieves the inhibitory effects of PDGF on OB maturation, resulting in decreased cell numbers but increased OB activity. HSC indicates hemopoietic stem cell; and MSC, mesenchymal stem cell.

This was particularly marked in patients with low serum phosphate.¹² In addition, O'Sullivan et al¹⁶ found that serum CTX-1 levels were significantly decreased in a group of CML patients after 18 months of imatinib treatment. Decreases in serum osteoclast markers have also been observed in imatinib-treated normal mice. Preliminary results suggest that treatment of 4-week-old C3H mice with imatinib for 10 weeks resulted in a significant reduction in the serum levels of the osteoclast marker TRAP5b, compared with vehicle-treated controls,^{29,30} indicating that imatinib treatment mediated a decrease in osteoclast activity in these animals.

Although these observed changes in bone resorption markers suggest that imatinib may be inhibiting osteoclasts, directly or indirectly, no histologic studies have been carried out to determine changes in osteoclast numbers in imatinib-treated patients. In animal studies performed by our group, treatment of C57BL/6 mice with 100 mg/kg imatinib resulted in a significant decrease in the number of osteoclast-occupied resorption lacunae in the tibia, relative to vehicle controls.³⁹ Similarly, preliminary data suggest that imatinib treatment of skeletally immature 4-week-old male C3H mice for 10 weeks resulted in a significant decrease in osteoclasts and resorption lacunae in the femora, but not in the vertebrae.^{29,30}

Taken together, these results strongly suggest that imatinib is a direct inhibitor of osteoclast survival, differentiation, and activity. There are several known targets that may be contributing to the antiosteoclastogenic activity of imatinib, including c-fms, c-kit, carbonic anhydrase II (CAII), and PDGFR- α and - β (Figure 2).

c-fms

c-fms is a transmembrane receptor that is a member of the type III receptor tyrosine kinase family that includes PDGFR- α and - β , c-kit, and fit3. c-fms is expressed by a variety of cell types, including primitive multipotent hematopoietic cells, mononuclear phagocyte progenitors, monocytes, tissue macrophages, osteoclasts, B cells, smooth muscle cells, neurons, and some cells of the female reproductive tract.⁴⁵ Although imatinib was originally reported as having no effect on c-fms phosphorylation,⁶ subsequent work from our laboratory⁷ and those of others⁴⁶⁻⁴⁸ showed that it potently and selectively inhibits M-CSF-induced c-fms activity at therapeutically achievable concentrations. Imatinib inhibits the phosphorylation of c-fms in a murine hematopoietic cell line ectopically expressing human c-fms (FDC-cfms) at an IC₅₀ of 1.42 μ M, without affecting total c-fms protein levels.⁷ In addition, imatinib has been shown to inhibit M-CSF-dependent, but not IL-3-dependent, proliferation of FDC-cfms cells and in Rat-2 and Bac1.2F5 fibroblasts ectopically expressing human c-fms at concentrations of 0.5 to 2 μ M and higher.^{7,46,48,49} This specific inhibition of c-fms phosphorylation/activity with imatinib treatment suggests a mechanism whereby imatinib may inhibit osteoclastogenesis.⁷

M-CSF is essential for osteoclastogenesis in vitro and in vivo. Signal transduction through c-fms regulates the proliferation, differentiation, activation, and survival of monocyte/macrophage lineage cells, including osteoclast precursors.³⁴ In osteoclasts, M-CSF inhibits apoptosis and promotes cell proliferation, migration, and cytoplasmic spreading.^{35,36,38} Although RANKL is the primary promoter of osteoclast differentiation, M-CSF also plays a minor role through induction of the expression of osteoclast-associated genes, including RANK.^{37,50}

The importance of M-CSF in osteoclast activity is illustrated by *op/op* mice, which are M-CSF-deficient.^{51,52} In these animals, a profound decrease in osteoclast numbers, resulting from defective osteoclast proliferation and differentiation, results in severe osteopetrosis and defective tooth eruption.⁵¹ Administering M-CSF to M-CSF^{-/-} animals rapidly restores osteoclast numbers.⁵² Homozygous knockouts c-fms have an identical phenotype to *op/op* mice.⁵³

The importance of c-fms signaling in osteoclast survival and activity, together with the similarities in the IC₅₀ concentrations of imatinib required to inhibit c-fms and osteoclast formation and activity, suggests that inhibition of c-fms is a mechanism whereby imatinib inhibits osteoclastogenesis. In addition, other second-generation 2-phenylaminopyrimidine-derived tyrosine kinase inhibitors, including nilotinib and dasatinib, have been found to inhibit c-fms and osteoclastogenesis in vitro^{49,54,55} and in vivo (K.V., A.L.D., S.F., P. Diamond, C. G. Schultz, N. A. Sims, and A.C.W.Z., manuscript submitted July 2009). Inhibition of c-fms kinase activity therefore may account, in part, for the dysregulated bone remodeling observed in patients undergoing imatinib treatment.

c-kit

In addition to c-fms, inhibition of signaling through c-kit by imatinib may affect osteoclastogenesis. c-kit is a transmembrane tyrosine kinase that binds soluble or membrane-bound isoforms of its ligand, stem cell factor (SCF; also known as mast cell growth factor, steel factor, c-kit ligand).⁵⁶ Some in vitro evidence suggests that c-kit may play a role in osteoclastogenesis. c-kit is expressed by osteoclasts,⁵⁷ and SCF has been shown to be mitogenic for hematopoietic stem cells⁵⁸ and osteoclast precursors.^{59,60} Soluble SCF stimulates osteoclast precursor proliferation, resulting in increased osteoclast numbers,^{59,60} and promotes mature osteoclast

activity,⁶¹ c-kit signals via microphthalmia transcription factor (Mitf), which lies downstream of c-kit,⁶¹ c-fms,⁶² and RANK.⁶³ The essential role of Mitf in osteoclast formation is demonstrated by *Mitf^{mi/mi}* mice, which exhibit severe osteopetrosis resulting from defective osteoclast fusion.^{64,65} Inhibition of c-kit signaling may therefore contribute to the antiosteoclastogenic properties of imatinib.

CAII

The recent identification of CAII as a nonkinase target of imatinib suggests another mechanism by which imatinib may inhibit bone resorption. The α -carbonic anhydrases are a family of zinc enzymes that are responsible for catalyzing the conversion of carbon dioxide and water to carbonic acid, which dissociates to form carbonate and a proton (H^+).

CAII plays an important role in the dissolution of the mineralized bone matrix by the osteoclast. Bone resorption is carried out by acidification of the extracellular space formed adjacent to the bone surface at the resorptive surface of the osteoclast through the excretion of protons via a proton pump (H^+ -ATPase).⁶⁶ CAII enables the acidification of the resorption lacunae by catalyzing the reaction, which produces protons in the cytoplasm of the osteoclast, providing the protons required to drive resorption of the mineralized matrix.⁶⁶

Patients with autosomal-recessive CAII deficiency exhibit osteopetrosis, which is associated with cerebral calcification and renal tubular acidosis.⁶⁷ Similarly, CAII-deficient mice have a slower growth rate than their wild-type littermates and exhibit renal tubular acidosis⁶⁸ and mild osteopetrosis presenting as an increase in trabecular bone volume.⁶⁹

In vitro, blocking of CAII expression with antisense RNA or DNA inhibits osteoclast formation, intravesicular acidification, and bone resorption in rat osteoclast and fetal mouse bone organ cultures.^{70,71} In addition, treatment of rat bone marrow osteoclasts and murine bone organ cultures with carbonic anhydrase inhibitors, such as acetazolamide, decreases osteoclast bone-resorptive activity.^{71,72}

The major role that CAII plays in bone resorption through resorption pit acidification suggests that inhibition of this kinase by imatinib may be another mechanism whereby imatinib inhibits osteoclast activity.

PDGFR

PDGF is a potent mitogen and chemotactic agent for cells of mesenchymal origin. The PDGF isoforms A and B can form either homodimers or heterodimers, which bind to the receptors PDGFR- α (PDGF-AA, PDGF-BB, and PDGF-AB) and PDGFR- β (PDGF-BB only). Treatment with PDGF-BB and, to a lesser extent, PDGF-AA increases osteoclast number and bone resorption surface in cultured fetal mouse calvaria.^{73,74} In cultures of iliac crest-derived primary human bone cells, PDGF-BB treatment significantly increased osteoclastic bone resorption in vitro.⁷⁵ The observed increase in osteoclast activity is probably the result of PDGF-BB-stimulating osteoblasts and stromal cells to release cytokines that have stimulatory effects on osteoclasts. For example, in cultures of murine cell lines and primary osteoblasts, PDGF-BB treatment has been shown to up-regulate the expression of several cytokines, including IL-6,⁷⁶ which stimulates the production of RANKL by osteoblasts, and the osteoclast mitogen M-CSF.⁷⁷ Thus, inhibition of PDGFR signaling by imatinib in vivo could indirectly have

effects on osteoclastogenesis via inhibition of cytokine secretion by stromal cells and osteoblasts.

Effects of imatinib on osteoblasts

In addition to having inhibitory effects on osteoclasts, there is emerging evidence that imatinib can affect osteoblasts. Osteoblasts are bone marrow cells of mesenchymal origin that, in adult bone, are responsible for the synthesis of new bone matrix.

Studies from our laboratory¹⁷ and those of others^{44,78-80} suggest that imatinib decreases in vitro osteoblast proliferation while increasing their activity. In mineralization assays in vitro using stromal cells isolated from human bone explants, treatment with therapeutically achievable concentrations of imatinib significantly increased mineral deposition,^{17,80} decreased proliferation of stromal cells,^{17,78} and suppressed stromal cell clonogenicity.⁷⁸ Similarly, imatinib increases mineralization by primary rat osteoblast cells and by the mouse osteoblast-like cell line MC3T3-E1.⁴⁴ Treatment with therapeutically relevant concentrations of imatinib partially inhibited proliferation of primary rat osteoblasts, the human osteoblast-like cell line SaOS2, the murine stromal cell line ST2,⁴⁴ and the mouse osteoblast-like cell line MC3T3-E1,⁷⁹ and increased apoptosis in primary rat osteoblasts.⁴⁴

There is some suggestion that patients undergoing imatinib therapy have altered serum levels of osteoblast markers. In CML patients, serum levels of the osteoblast markers osteocalcin and pre-collagen I propeptides (PINP) have been shown to be significantly increased after 3 months of imatinib treatment,^{15,16} with elevated levels returning to baseline by 24 months.¹⁶ Studies by Tibullo et al⁸⁰ found that increased serum osteocalcin levels in patients undergoing imatinib therapy were sustained until 24 months of treatment. These studies contrast those of Berman et al,¹² who reported that patients treated with imatinib for an unspecified amount of time did not have significantly altered levels of bone-specific alkaline phosphatase, relative to normal controls. Moreover, the imatinib-treated patients had significantly lower levels of osteocalcin compared with age-matched normal controls.¹²

Taken together, these results suggest that osteoblast activity may be transiently increased by imatinib treatment but subsequently decreases to levels at, or lower than, those at baseline over time. This is consistent with in vitro data showing that imatinib increases osteoblast activity while inhibiting osteoblast proliferation.¹⁷ One could hypothesize that, at the commencement of treatment, imatinib may increase the differentiation of the existing pool of osteoblast precursors, thereby increasing the number of committed osteoblasts. However, as imatinib inhibits mesenchymal cell proliferation, the number of osteoblast precursors and the number of osteoblasts would decrease over time. Histomorphometric analysis is therefore required to determine the temporal changes in osteoblasts and bone deposition rates occurring in patients undergoing imatinib therapy.

The proliferation and differentiation of osteoblasts are regulated through several signaling pathways, including known imatinib targets c-Abl and PDGFR. Whereas loss of signaling through c-Abl is thought to inhibit osteoblast activity,⁸¹ PDGFR signaling is known to be mitogenic to mesenchymal cells and to have a negative regulatory effect on osteoblastogenesis, and thus represents the best candidate to explain the mechanism whereby imatinib activates osteoblast differentiation while inhibiting mesenchymal cell proliferation (Figure 2).

PDGFR

In addition to inducing expression of osteoclastogenic cytokines by osteoblasts and stromal cells, PDGF is known to have direct effects on osteoblast proliferation and differentiation. Osteoblasts express PDGF receptors⁸² and PDGF-AA, which can stimulate cell proliferation in a paracrine or autocrine manner.^{83,84} PDGF-BB and, to a lesser extent, PDGF-AA are mitogenic for mesenchymal cells and inhibit osteoblast differentiation *in vitro*. Recombinant PDGF enhances proliferation of osteoblasts in rat calvarial cultures, isolated fetal rat calvarial osteoblasts, and mouse osteoblast-like MC3T3-E1 cells *in vitro*.^{74,85} In addition, inhibition of osteoblast differentiation by PDGF-BB has been observed in human osteoblast cultures, MC3T3-E1 cells, and fetal rat calvarial cultures,⁸⁵⁻⁸⁷ resulting in decreased mineralized nodule formation.⁸⁵ Furthermore, PDGF-AA and -BB were found to decrease mineral apposition rate and bone formation rate in fetal rat calvarial organ cultures, suggesting an inhibition of mineralization activity.⁷⁴ In support of these findings, targeted deletion of PDGFR- β in murine mesenchymal cells promotes osteoblast differentiation and function.⁸⁸

As expected, imatinib is able to reverse the effects of PDGF on osteoblasts *in vitro*. Treatment of human bone trephine explant cultures and MC3T3-E1 cells with PDGF-BB inhibited mineralized matrix formation; this was prevented by pretreatment with imatinib.^{17,44} In rat primary osteoblasts, proliferation is activated by PDGF-BB.⁴⁴ This is reversed by imatinib, resulting in enhanced mineralization on a per-cell basis.⁴⁴ These results suggest that inhibition of PDGFR signaling may be one mechanism whereby imatinib inhibits osteoblast proliferation and activates differentiation *in vitro*.

Potential application of imatinib as bone cancer treatment

The observed effects of imatinib on osteoclast and osteoblast activity suggest a rationale for its use to treat conditions in which dysregulated bone remodeling is a feature, such as in bone metastases in breast cancer (BrCa), prostate cancer (PCa), and multiple myeloma.

The majority of bone lesions resulting from tumors, including BrCa and multiple myeloma, are primarily osteolytic. In contrast, lesions resulting from PCa skeletal metastases are mixed (ie, both osteoblastic and osteosclerotic), although they usually result in an overall increase in local bone volume.⁸⁹ Irrespective of the lesion type, bone resorption is almost universally increased in patients with bone tumors.⁹⁰ Moreover, studies suggest that bone resorption is necessary for the establishment of tumor cells in the bone through the local release of growth factors that promote establishment of the secondary tumor.⁹¹

In osteolytic tumors, there is evidence to suggest that tumor cells can act indirectly or directly to increase the recruitment, maturation, activity, and survival of osteoclasts, leading to an imbalance in bone remodeling and, therefore, bone loss. In addition, factors released from the bone during osteolysis stimulate cancer cell survival, thus instigating a “vicious cycle” resulting in decreased bone density and increased tumor burden in the bone marrow microenvironment.⁸⁹ Thus, whereas direct induction of tumor cell death is the primary strategy for decreasing tumor size, antiosteoclastogenic treatments are a potential therapeutic strategy

for limiting tumor progression by inhibiting tumor-associated osteolysis.

Several studies have examined the effects of imatinib therapy on the growth of BrCa tumor cells in the bone marrow environment *in vivo*. In a systemic MDA-MB-231 model of BrCa bone metastasis⁹² and in an intratibial MDA-MB-435 model of tumor-associated bone loss,⁹³ daily imatinib therapy was found to decrease tumor size and tumor-associated osteolysis.

Similarly, in animal models of PCa bone metastases, imatinib treatment has been shown to decrease tumor burden and associated osteolysis. In an intratibial model of PCa-associated bone loss, treatment with 50 mg/kg imatinib significantly inhibited bone lysis.⁹⁴⁻⁹⁶ This was associated with reduced tumor incidence, tumor size, tumor cell proliferation, and tumor cell apoptosis.⁹⁴⁻⁹⁶

The rationale for these *in vivo* studies has primarily focused on inhibiting tumor cell proliferation and tumor-stroma interactions through the inhibition of paracrine and autocrine growth factor signaling. Indeed, evidence suggests that high concentrations of imatinib may inhibit tumor cell proliferation in some BrCa and PCa cell lines *in vitro*.^{97,98} In addition, orthotopic growth of the MDA-MB-231 BrCa cells is also inhibited by imatinib therapy.⁹² Therefore, a decrease in tumor-associated osteolysis may be an indirect effect of imatinib-mediated tumor cytotoxicity. Further studies are required to ascertain to what extent direct inhibition of osteolysis by imatinib contributes to decreased tumor-associated bone loss.

Assessing the effects of imatinib on tumor-associated osteolysis is further complicated by the fact that few clinical trials have directly examined the impact of imatinib therapy on tumor bone lysis. Although some studies have examined the efficacy of imatinib as a treatment for PCa or BrCa, these have primarily been undertaken in patient populations with nonmetastatic disease.⁹⁹⁻¹⁰³ In addition, most studies that have been carried out in patients with bone metastases have not examined indices of bone turnover,^{104,105} or have been complicated by the patients' concurrent use of bisphosphonate therapy.¹⁰⁶ To date, only one clinical trial has reported the effects of imatinib on bone parameters in patients with bone metastases.¹⁰⁷ In this study, imatinib was used in combination with docetaxol to treat patients with advanced hormone-refractory PCa with bone metastases. Although time to progression was no different between the treatment and placebo groups during the 42 days of the trial, the level of urinary collagen N-telopeptides was significantly decreased in the imatinib group. Although not definitive, these studies suggest that imatinib is decreasing bone loss by directly affecting osteoclast formation/activity. The potential application for imatinib as a direct inhibitor of osteoclast activity and tumor-associated osteolysis requires further investigation.

Conclusions

The long-term consequences of dysregulated bone remodeling by imatinib are not known. However, there is some suggestion that long-term inhibition of bone turnover may result in weakened bone through the accumulation of microfractures.¹⁰⁸⁻¹¹⁰ Several studies indicate that long-term inhibition of bone turnover by bisphosphonate treatment may result in an increased accumulation of microfractures and, in some cases, decreased bone strength.¹¹¹⁻¹¹³ We are currently performing longitudinal histologic assessment of bone biopsies from patients taking imatinib to determine the effects of this compound on osteoblast and osteoclast numbers and function, bone formation rates, and bone quality.

Alteration of the activity of bone cells by imatinib may have additional unanticipated side effects. For example, there are emerging data suggesting that imatinib therapy may result in decelerated growth in prepubescent patients. Three recent case reports have described retarded growth in juvenile CML patients undergoing imatinib therapy.¹¹⁴⁻¹¹⁶ This may be the result of accelerated growth plate closure, as has been observed in imatinib-treated rats¹¹⁷ resulting from an inhibition of chondrocyte activity and altered mineralization dynamics via the inhibition of PDGFR- β ^{17,44,117} or DDR2.¹¹⁸ In addition, the effects of imatinib on osteoblasts suggest that imatinib may have unanticipated effects on hematopoiesis, as osteoblasts are a vital component of the hematopoietic stem cell niche.¹¹⁹ This warrants future studies to investigate the effects of imatinib therapy on this niche.

The significant incidence of acquired resistance to imatinib has led to the development of second-generation tyrosine kinase inhibitors, including dasatinib, nilotinib, and bosutinib, which have greater affinity for their target kinases. As the target profile of these second-generation inhibitors overlaps with that of imatinib, there is a potential for off-target skeletal effects of these compounds, which should be investigated.

In conclusion, there is a mounting body of evidence suggesting that dysregulated bone remodeling may be a side effect of imatinib

treatment. This probably results from inhibition of osteoclasts, by blocking c-fms, c-kit, CAII, and PDGFR signaling, and activation of osteoblast activity through inhibition of PDGFR. Clearly, the suggestion that imatinib may increase bone strength, through positive effects on BMD and trabecular bone volume, warrants further investigation. These results suggest the possibility that imatinib may be clinically useful as an inhibitor of osteoclast activity in diseases associated with excessive bone resorption, such as cancer-induced bone loss.

Authorship

Contribution: K.V., S.F., A.L.D., and A.C.W.Z. wrote the manuscript; and T.P.H. critically reviewed the manuscript.

Conflict-of-interest disclosure: A.C.W.Z. and T.P.H. receive research funding from Novartis. The remaining authors declare no competing financial interests.

Correspondence: Andrew C. W. Zannettino, Myeloma Research Program, Bone and Cancer Research Laboratories, Department of Haematology, Centre for Cancer Biology, Hanson Institute of Medical and Veterinary Science, GPO Box 14, Adelaide, SA, Australia 5000; e-mail: andrew.zannettino@imvssa.gov.au.

References

- Buchdunger E, Zimmermann J, Mett H, et al. Inhibition of the Abl protein-tyrosine kinase in vitro and in vivo by a 2-phenylaminopyrimidine derivative. *Cancer Res*. 1996;56(1):100-104.
- Druker BJ, Talpaz M, Resta DJ, et al. Efficacy and safety of a specific inhibitor of the BCR-ABL tyrosine kinase in chronic myeloid leukemia. *N Engl J Med*. 2001;344(14):1031-1037.
- Weisberg E, Manley PW, Breitenstein W, et al. Characterization of AMN107, a selective inhibitor of native and mutant Bcr-Abl. *Cancer Cell*. 2005;7(2):129-141.
- Okuda K, Weisberg E, Gilliland DG, Griffin JD. ARG tyrosine kinase activity is inhibited by STI571. *Blood*. 2001;97(8):2440-2448.
- Day E, Waters B, Spiegel K, et al. Inhibition of collagen-induced discoidin domain receptor 1 and 2 activation by imatinib, nilotinib and dasatinib. *Eur J Pharmacol*. 2008;599(1):44-53.
- Buchdunger E, Ciocci CL, Law N, et al. Abl protein-tyrosine kinase inhibitor STI571 inhibits *in vitro* signal transduction mediated by c-kit and platelet-derived growth factor receptors. *J Pharmacol Exp Ther*. 2000;295(1):139-145.
- Dewar AL, Cambareri AC, Zannettino ACW, et al. Macrophage colony-stimulating factor receptor c-fms is a novel target of imatinib. *Blood*. 2005;105(8):3127-3132.
- Rix U, Hantschel O, Dürnberger G, et al. Chemical proteomic profiles of the BCR-ABL inhibitors imatinib, nilotinib, and dasatinib reveal novel kinase and nonkinase targets. *Blood*. 2007;110(12):4055-4063.
- Winger JA, Hantschel O, Superti-Furga G, Kuriyan J. The structure of the leukemia drug imatinib bound to human quinone reductase 2 (NQO2). *BMC Struct Biol*. 2009;9:7.
- Parkkila S, Innocenti A, Kallio H, Hiltio M, Scozzafava A, Supuran CT. The protein tyrosine kinase inhibitors imatinib and nilotinib strongly inhibit several mammalian α -carbonic anhydrase isoforms. *Bioorg Med Chem Lett*. 2009;19(15):4102-4106.
- O'Brien SG, Guilhot F, Larson RA, et al. Imatinib compared with interferon and low-dose cytarabine for newly diagnosed chronic-phase chronic myeloid leukemia. *N Engl J Med*. 2003;348(11):994-1004.
- Berman E, Nicolaidis M, Maki RG, et al. Altered bone and mineral metabolism in patients receiving imatinib mesylate. *N Engl J Med*. 2006;354(19):2006-2013.
- Owen S, Hatfield A, Letvak L. Imatinib and altered bone and mineral metabolism. *N Engl J Med*. 2006;355(6):627.
- Joensuu H, Reichardt P. Imatinib and altered bone and mineral metabolism. *N Engl J Med*. 2006;355(6):628.
- Grey A, O'Sullivan S, Reid IR, Browett P. Imatinib mesylate, increased bone formation, and secondary hyperparathyroidism. *N Engl J Med*. 2006;355(23):2494-2495.
- O'Sullivan S, Horne A, Wattie D, et al. Decreased bone turnover despite persistent secondary hyperparathyroidism during prolonged treatment with imatinib. *J Clin Endocrinol Metab*. 2009;94(4):1131-1136.
- Fitter S, Dewar AL, Kostakis P, et al. Long-term imatinib therapy promotes bone formation in CML patients. *Blood*. 2008;111(5):2538-2547.
- Osorio S, Noblejas AG, Durán A, Steegmann JL. Imatinib mesylate induces hypophosphatemia in patients with chronic myeloid leukemia in late chronic phase, and this effect is associated with response. *Am J Hematol*. 2007;82(5):394-395.
- Druker BJ, Guilhot F, O'Brien SG, et al. Five-year follow-up of patients receiving imatinib for chronic myeloid leukemia. *N Engl J Med*. 2006;355(23):2408-2417.
- Van Glabbeke M, Verweij J, Casali PG, et al. Predicting toxicities for patients with advanced gastrointestinal stromal tumours treated with imatinib: a study of the European Organisation for Research and Treatment of Cancer, the Italian Sarcoma Group, and the Australasian Gastro-Intestinal Trials Group (EORTC-ISG-AGITG). *Eur J Cancer*. 2006;42(14):2277-2285.
- Kitiyakara C, Atichartakarn V. Renal failure associated with a specific inhibitor of BCR-ABL tyrosine kinase, STI 571. *Nephrol Dial Transplant*. 2002;17(4):685-687.
- Pou M, Saval N, Vera M, et al. Acute renal failure secondary to imatinib mesylate treatment in chronic myeloid leukemia. *Leuk Lymphoma*. 2003;44(7):1239-1241.
- François H, Coppo P, Hayman JP, Fouqueray B, Mougnot B, Ronco P. Partial Fanconi syndrome induced by imatinib therapy: a novel cause of urinary phosphate loss. *Am J Kidney Dis*. 2008;51(2):298-301.
- Moe SM. Disorders involving calcium, phosphorus, and magnesium. *Prim Care*. 2008;35(2):215-237.
- Cheer SM, Noble S. Zoledronic acid. *Drugs*. 2001;61(6):799-805.
- Peter R, Mishra V, Fraser WD. Severe hypocalcaemia after being given intravenous bisphosphonate. *BMJ*. 2004;328(7435):335-336.
- Tanvetyanon T, Stiff PJ. Management of the adverse effects associated with intravenous bisphosphonates. *Ann Oncol*. 2006;17(6):897-907.
- Jönsson S, Olsson B, Ohlsson C, Lorentzon M, Mellström D, Wadenvik H. Increased cortical bone mineralization in imatinib treated patients with chronic myelogenous leukemia. *Haematologica*. 2008;93(7):1101-1103.
- Boehme J, Suttrop M, Fischer R, Bornhäuser M. Influence of imatinib on bone remodeling in juvenile mice [abstract]. *J Bone Miner Res*. 2008;23[suppl]:S189.
- Suttrop M, Boehme J, Vail J, et al. Side effects on the heart and skeleton of growing mice attributed to chronic imatinib exposure [abstract]. *Blood*. 2008;112:Abstract 1100.
- Yasuda H, Shima N, Nakagawa N, et al. Osteoclast differentiation factor is a ligand for osteoprotegerin/osteoclastogenesis-inhibitory factor and is identical to TRANCE/RANKL. *Proc Natl Acad Sci U S A*. 1998;95(7):3597-3602.
- Lacey DL, Timms E, Tan HL, et al. Osteoprotegerin ligand is a cytokine that regulates osteoclast differentiation and activation. *Cell*. 1998;93(2):165-176.
- Takahashi N, Udagawa N, Suda T. A new member of tumor necrosis factor ligand family, ODF/OPGL/TRANCE/RANKL, regulates osteoclast differentiation and function. *Biochem Biophys Res Commun*. 1999;256(3):449-455.
- Cecchini MG, Dominguez MG, Mocchi S, et al. Role of colony stimulating factor-1 in the establishment and regulation of tissue macrophages

- during postnatal development of the mouse. *Development*. 1994;120(6):1357-1372.
35. Insogna KL, Sahni M, Grey AB, et al. Colony-stimulating factor-1 induces cytoskeletal reorganization and c-src-dependent tyrosine phosphorylation of selected cellular proteins in rodent osteoclasts. *J Clin Invest*. 1997;100(10):2476-2485.
 36. Grey A, Chen Y, Paliwal I, Carlberg K, Insogna K. Evidence for a functional association between phosphatidylinositol 3-kinase and c-src in the spreading response of osteoclasts to colony-stimulating factor-1. *Endocrinology*. 2000;141(6):2129-2138.
 37. Cappellen D, Luong-Nguyen NH, Bongiovanni S, Grenet O, Wanke C, Šušta M. Transcriptional program of mouse osteoclast differentiation governed by the macrophage colony-stimulating factor and the ligand for the receptor activator of NF- κ B. *J Biol Chem*. 2002;277(24):21971-21982.
 38. Glantschnig H, Fisher JE, Wesolowski G, Rodan GA, Reszka AA. M-CSF, TNF α and RANK ligand promote osteoclast survival by signaling through mTOR/S6 kinase. *Cell Death Differ*. 2003;10(10):1165-1177.
 39. Dewar AL, Farrugia AN, Conchina MR, et al. Imatinib as a potential antiresorptive therapy for bone disease. *Blood*. 2006;107(11):4334-4337.
 40. Ando W, Hashimoto J, Napei A, et al. Imatinib mesylate inhibits osteoclastogenesis and joint destruction in rats with collagen-induced arthritis (CIA). *J Bone Miner Metab*. 2006;24(4):274-282.
 41. El Hajj Dib I, Gallet M, Mentaverri R, Sevenet N, Brazier M, Kamel S. Imatinib mesylate (Gleevec) enhances mature osteoclast apoptosis and suppresses osteoclast bone resorbing activity. *Eur J Pharmacol*. 2006;551(1):27-33.
 42. Dewar AL, Domaschenz RM, Doherty KV, Hughes TP, Lyons AB. Imatinib inhibits the *in vitro* development of the monocyte/macrophage lineage from normal human bone marrow progenitors. *Leukemia*. 2003;17(9):1713-1721.
 43. Dewar AL, Doherty KV, Hughes TP, Lyons AB. Imatinib inhibits the functional capacity of cultured human monocytes. *Immunol Cell Biol*. 2005;83(1):48-56.
 44. O'Sullivan S, Naot D, Callon K, et al. Imatinib promotes osteoblast differentiation by inhibiting PDGFR signaling and inhibits osteoclastogenesis by both direct and stromal cell-dependent mechanisms. *J Bone Miner Res*. 2007;22(11):1679-1689.
 45. Ross FP, Teitelbaum SL. $\alpha_v\beta_3$ and macrophage colony-stimulating factor: partners in osteoclast biology. *Immunol Rev*. 2005;208(1):88-105.
 46. Taylor JR, Brownlow N, Domin J, Dibb NJ. FMS receptor for M-CSF (CSF-1) is sensitive to the kinase inhibitor imatinib and mutation of Asp-802 to Val confers resistance. *Oncogene*. 2006;25(1):147-151.
 47. Guo J, Marcotte PA, McCall JO, et al. Inhibition of phosphorylation of the colony-stimulating factor-1 receptor (c-Fms) tyrosine kinase in transfected cells by ABT-869 and other tyrosine kinase inhibitors. *Mol Cancer Ther*. 2006;5(4):1007-1013.
 48. Chase A, Schultheis B, Kreil S, et al. Imatinib sensitivity as a consequence of a CSF1R-Y571D mutation and CSF1/CSF1R signaling abnormalities in the cell line GDM1. *Leukemia*. 2009;23(2):358-364.
 49. Brownlow N, Russell AE, Saravanapavan H, et al. Comparison of nilotinib and imatinib inhibition of FMS receptor signaling, macrophage production and osteoclastogenesis. *Leukemia*. 2008;22(3):649-652.
 50. Arai F, Miyamoto T, Ohneda O, et al. Commitment and differentiation of osteoclast precursor cells by the sequential expression of c-Fms and receptor activator of nuclear factor κ B (RANK) receptors. *J Exp Med*. 1999;190(12):1741-1754.
 51. Yoshida H, Hayashi S, Kunisada T, et al. The murine mutation osteopetrosis is in the coding region of the macrophage colony stimulating factor gene. *Nature*. 1990;345(6274):442-444.
 52. Niida S, Kaku M, Amano H, et al. Vascular endothelial growth factor can substitute for macrophage colony-stimulating factor in the support of osteoclastic bone resorption. *J Exp Med*. 1999;190(2):293-298.
 53. Dai XM, Ryan GR, Hapel AJ, et al. Targeted disruption of the mouse colony-stimulating factor 1 receptor gene results in osteopetrosis, mononuclear phagocyte deficiency, increased primitive progenitor cell frequencies, and reproductive defects. *Blood*. 2002;99(1):111-120.
 54. Vanduyke K, Dewar AL, Farrugia AN, et al. Therapeutic concentrations of dasatinib inhibit *in vitro* osteoclastogenesis. *Leukemia*. 2009;23(5):994-997.
 55. Brownlow N, Mol C, Hayford C, Ghaem-Maghamsi S, Dibb NJ. Dasatinib is a potent inhibitor of tumour-associated macrophages, osteoclasts and the FMS receptor. *Leukemia*. 2009;23(3):590-594.
 56. Huang EJ, Nocka KH, Buck J, Besmer P. Differential expression and processing of two cell associated forms of the kit-ligand: KL-1 and KL-2. *Mol Biol Cell*. 1992;3(3):349-362.
 57. Gattei V, Aldinucci D, Quinn JM, et al. Human osteoclasts and preosteoclast cells (FLG 29.1) express functional c-kit receptors and interact with osteoblast and stromal cells via membrane-bound stem cell factor. *Cell Growth Differ*. 1996;7(6):753-763.
 58. Broxmeyer HE, Maze R, Miyazawa K, et al. The kit receptor and its ligand, steel factor, as regulators of hemopoiesis. *Cancer Cells*. 1991;3(12):480-487.
 59. Demulder A, Suggs SV, Zsebo KM, Scarcez T, Roodman GD. Effects of stem cell factor on osteoclast-like cell formation in long-term human marrow cultures. *J Bone Miner Res*. 1992;7(11):1337-1344.
 60. Chae HJ, Park RK, Kang JS, et al. Effect of stem cell factor, interleukin-6, nitric oxide and transforming growth factor-beta on the osteoclast differentiation induced by 1 α ,25-(OH) $_2$ D $_3$ in primary murine bone marrow cultures. *Pharmacol Toxicol*. 1998;82(5):223-229.
 61. van't Hof RJ, von Lindern M, Nijweide PJ, Beug H. Stem cell factor stimulates chicken osteoclast activity *in vitro*. *FASEB J*. 1997;11(4):287-293.
 62. Weillbaecher KN, Motyckova G, Huber WE, et al. Linkage of M-CSF signaling to Mitf, TFE3, and the osteoclast defect in *Mitf*(*mi/mi*) mice. *Mol Cell*. 2001;8(4):749-758.
 63. Mansky KC, Sankar U, Han J, Ostrowski MC. Microphthalmia transcription factor is a target of the p38 MAPK pathway in response to receptor activator of NF- κ B ligand signaling. *J Biol Chem*. 2002;277(13):11077-11083.
 64. Steingrimsson E, Moore KJ, Lamoreux ML, et al. Molecular basis of mouse microphthalmia (*mi*) mutations helps explain their developmental and phenotypic consequences. *Nat Genet*. 1994;8(3):256-263.
 65. Moore KJ. Insight into the microphthalmia gene. *Trends Genet*. 1995;11(11):442-448.
 66. Rousselle AV, Heymann D. Osteoclastic acidification pathways during bone resorption. *Bone*. 2002;30(4):533-540.
 67. Sly WS, Hewett-Emmett D, Whyte MP, Yu YS, Tashian RE. Carbonic anhydrase II deficiency identified as the primary defect in the autosomal recessive syndrome of osteopetrosis with renal tubular acidosis and cerebral calcification. *Proc Natl Acad Sci U S A*. 1983;80(9):2752-2756.
 68. Lewis SE, Erickson RP, Barnett LB, Venta PJ, Tashian RE. N-ethyl-N-nitrosourea-induced null mutation at the mouse *Car-2* locus: an animal model for human carbonic anhydrase II deficiency syndrome. *Proc Natl Acad Sci U S A*. 1988;85(6):1962-1966.
 69. Margolis DS, Szivek JA, Lai L-W, Lien YH. Phenotypic characteristics of bone in carbonic anhydrase II-deficient mice. *Calcif Tissue Int*. 2008;82(1):66-76.
 70. Laitala T, Väänänen HK. Inhibition of bone resorption *in vitro* by antisense RNA and DNA molecules targeted against carbonic anhydrase II or two subunits of vacuolar H(+)-ATPase. *J Clin Invest*. 1994;93(6):2311-2318.
 71. Lehenkari P, Hentunen TA, Laitala-Leinonen T, Tuukkanen J, Väänänen HK. Carbonic anhydrase II plays a major role in osteoclast differentiation and bone resorption by effecting the steady state intracellular pH and Ca $^{2+}$. *Exp Cell Res*. 1998;242(1):128-137.
 72. Minkin C, Jennings JM. Carbonic anhydrase and bone remodeling: sulfonamide inhibition of bone resorption in organ culture. *Science*. 1972;176(38):1031-1033.
 73. Cochran DL, Rouse CA, Lynch SE, Graves DT. Effects of platelet-derived growth factor isoforms on calcium release from neonatal mouse calvariae. *Bone*. 1993;14(1):53-58.
 74. Hock JM, Canalis E. Platelet-derived growth factor enhances bone cell replication, but not differentiated function of osteoblasts. *Endocrinology*. 1994;134(3):1423-1428.
 75. Zhang Z, Chen J, Jin D. Platelet-derived growth factor (PDGF)-BB stimulates osteoclastic bone resorption directly: the role of receptor β . *Biochem Biophys Res Commun*. 1998;251(1):190-194.
 76. Franchimont N, Canalis E. Platelet-derived growth factor stimulates the synthesis of interleukin-6 in cells of the osteoblast lineage. *Endocrinology*. 1995;136(12):5469-5475.
 77. Abboud SL, Pinzani M. Peptide growth factors stimulate macrophage colony-stimulating factor in murine stromal cells. *Blood*. 1991;78(1):103-109.
 78. Fierro F, Illmer T, Jing D, et al. Inhibition of platelet-derived growth factor receptor β by imatinib mesylate suppresses proliferation and alters differentiation of human mesenchymal stem cells *in vitro*. *Cell Prolif*. 2007;40(3):355-366.
 79. Wihlidal P, Karlic H, Pfeilstocker M, Klaushofer K, Varga F. Imatinib mesylate (IM)-induced growth inhibition is associated with production of spliced osteocalcin-mRNA in cell lines. *Leuk Res*. 2008;32(3):437-443.
 80. Tibullo D, Giallongo C, La Cava P, et al. Effects of imatinib mesylate in osteoblastogenesis. *Exp Hematol*. 2009;37(4):461-468.
 81. Li B, Boast S, de los Santos K, et al. Mice deficient in *Abl* are osteoporotic and have defects in osteoblast maturation. *Nat Genet*. 2000;24(3):304-308.
 82. Xie JF, Stroumza J, Graves DT. IL-1 down-regulates platelet-derived growth factor- α receptor gene expression at the transcriptional level in human osteoblastic cells. *J Immunol*. 1994;153(1):378-383.
 83. Graves DT, Owen AJ, Antoniadis HN. Evidence that a human osteosarcoma cell line which secretes a mitogen similar to platelet-derived growth factor requires growth factors present in platelet-poor plasma. *Cancer Res*. 1983;43(1):83-87.
 84. Canalis E, Varghese S, McCarthy TL, Centrella M. Role of platelet derived growth factor in bone cell function. *Growth Regul*. 1992;2(4):151-155.
 85. Yu X, Hsieh SC, Bao W, Graves DT. Temporal expression of PDGF receptors and PDGF regulatory effects on osteoblastic cells in mineralizing cultures. *Am J Physiol*. 1997;272(5):C1709-C1716.
 86. Kubota K, Sakikawa C, Katsumata M, Nakamura T, Wakabayashi K. Platelet-derived growth factor

- BB secreted from osteoclasts acts as an osteoblastogenesis inhibitory factor. *J Bone Miner Res*. 2002;17(2):257-265.
87. Chaudhary LR, Hofmeister AM, Hruska KA. Differential growth factor control of bone formation through osteoprogenitor differentiation. *Bone*. 2004;34(3):402-411.
 88. Tokunaga A, Oya T, Ishii Y, et al. PDGF receptor beta is a potent regulator of mesenchymal stromal cell function. *J Bone Miner Res*. 2008;23(9):1519-1528.
 89. Zannettino ACW. Bone loss, cancer mediated. In: Schwab M, ed. *Encyclopedia of Cancer* (ed 2). New York, NY: Springer; 2009:382-385.
 90. Seibel MJ. Clinical use of markers of bone turnover in metastatic bone disease. *Nat Clin Pract Oncol*. 2005;2(10):504-517.
 91. Nielsen OS, Munro AJ, Tannock IF. Bone metastases: pathophysiology and management policy. *J Clin Oncol*. 1991;9(3):509-524.
 92. Hiraga T, Nakamura H. Imatinib mesylate suppresses bone metastases of breast cancer by inhibiting osteoclasts through the blockade of c-Fms signals. *Int J Cancer*. 2009;124(1):215-222.
 93. Chelouche Lev D, Kim SJ, Onn A, et al. Inhibition of platelet-derived growth factor receptor signaling restricts the growth of human breast cancer in the bone of nude mice. *Clin Cancer Res*. 2005;11(1):306-314.
 94. Uehara H, Kim SJ, Karashima T, et al. Effects of blocking platelet-derived growth factor-receptor signaling in a mouse model of experimental prostate cancer bone metastases. *J Natl Cancer Inst*. 2003;95(6):458-470.
 95. Kim SJ, Uehara H, Yazici S, et al. Simultaneous blockade of platelet-derived growth factor-receptor and epidermal growth factor-receptor signaling and systemic administration of paclitaxel as therapy for human prostate cancer metastasis in bone of nude mice. *Cancer Res*. 2004;64(12):4201-4208.
 96. Kim SJ, Uehara H, Yazici S, et al. Modulation of bone microenvironment with zoledronate enhances the therapeutic effects of STI571 and paclitaxel against experimental bone metastasis of human prostate cancer. *Cancer Res*. 2005;65(9):3707-3715.
 97. Kubler HR, van Randenborgh H, Treiber U, et al. In vitro cytotoxic effects of imatinib in combination with anticancer drugs in human prostate cancer cell lines. *Prostate*. 2005;63(4):385-394.
 98. Brama M, Basciani S, Cherubini S, et al. Osteoblast-conditioned medium promotes proliferation and sensitizes breast cancer cells to imatinib treatment. *Endocr Relat Cancer*. 2007;14(1):61-72.
 99. Breccia M, De Cuia MR, D'Elia GM, Francesca B, Mandelli F, Alimena G. Response of prostate cancer during imatinib therapy in a patient with chronic myeloid leukemia. *Haematologica*. 2004;89(7):e68-e69.
 100. Rao K, Goodin S, Levitt MJ, et al. A phase II trial of imatinib mesylate in patients with prostate specific antigen progression after local therapy for prostate cancer. *Prostate*. 2005;62(2):115-122.
 101. Lin AM, Rini BI, Weinberg V, et al. A phase II trial of imatinib mesylate in patients with biochemical relapse of prostate cancer after definitive local therapy. *BJU Int*. 2006;98(4):763-769.
 102. Mathew P, Pisters LL, Wood CG, et al. Neoadjuvant platelet derived growth factor receptor inhibitor therapy combined with docetaxel and androgen ablation for high risk localized prostate cancer. *J Urol*. 2009;181(1):81-87.
 103. Bajaj GK, Zhang Z, Garrett-Mayer E, et al. Phase II study of imatinib mesylate in patients with prostate cancer with evidence of biochemical relapse after definitive radical retropubic prostatectomy or radiotherapy. *Urology*. 2007;69(3):526-531.
 104. Modi S, Seidman AD, Dickler M, et al. A phase II trial of imatinib mesylate monotherapy in patients with metastatic breast cancer. *Breast Cancer Res Treat*. 2005;90(2):157-163.
 105. Cristofanilli M, Morandi P, Krishnamurthy S, et al. Imatinib mesylate (Gleevec) in advanced breast cancer-expressing C-Kit or PDGFR- β : clinical activity and biological correlations. *Ann Oncol*. 2008;19(10):1713-1719.
 106. Tiffany NM, Wersinger EM, Garzotto M, Beer TM. Imatinib mesylate and zoledronic acid in androgen-independent prostate cancer. *Urology*. 2004;63(5):934-939.
 107. Mathew P, Thall PF, Bucana CD, et al. Platelet-derived growth factor receptor inhibition and chemotherapy for castration-resistant prostate cancer with bone metastases. *Clin Cancer Res*. 2007;13(19):5816-5824.
 108. Mori S, Burr DB. Increased intracortical remodeling following fatigue damage. *Bone*. 1993;14(2):103-109.
 109. Bentolila V, Boyce TM, Fyhrie DP, Drumb R, Skerry TM, Schaffler MB. Intracortical remodeling in adult rat long bones after fatigue loading. *Bone*. 1998;23(3):275-281.
 110. Burr DB, Forwood MR, Fyhrie DP, Martin RB, Schaffler MB, Turner CH. Bone microdamage and skeletal fragility in osteoporotic and stress fractures. *J Bone Miner Res*. 1997;12(1):6-15.
 111. Mashiba T, Turner CH, Hirano T, Forwood MR, Johnston CC, Burr DB. Effects of suppressed bone turnover by bisphosphonates on microdamage accumulation and biomechanical properties in clinically relevant skeletal sites in beagles. *Bone*. 2001;28(5):524-531.
 112. Mashiba T, Hirano T, Turner CH, Forwood MR, Johnston CC, Burr DB. Suppressed bone turnover by bisphosphonates increases microdamage accumulation and reduces some biomechanical properties in dog rib. *J Bone Miner Res*. 2000;15(4):613-620.
 113. Komatsubara S, Mori S, Mashiba T, et al. Long-term treatment of incadronate disodium accumulates microdamage but improves the trabecular bone microarchitecture in dog vertebra. *J Bone Miner Res*. 2003;18(3):512-520.
 114. Kimoto T, Inoue M, Kawa K. Growth deceleration in a girl treated with imatinib. *Int J Hematol*. 2009;89(2):251-252.
 115. Mariani S, Giona F, Basciani S, Brama M, Gnassi L. Low bone density and decreased inhibin-B/FSH ratio in a boy treated with imatinib during puberty. *Lancet*. 2008;372(9633):111-112.
 116. Schmid H, Jaeger BA, Lohse J, Suttorp M. Longitudinal growth retardation in a prepubertal girl with chronic myeloid leukemia on long-term treatment with imatinib. *Haematologica*. 2009;94(8):1177-1179.
 117. Vandyke K, Dewar AL, Fitter S, et al. Imatinib mesylate causes growth plate closure *in vivo*. *Leukemia*. 2009;23(11):2155-2159.
 118. Labrador JP, Azcoitia V, Tuckermann J, et al. The collagen receptor DDR2 regulates proliferation and its elimination leads to dwarfism. *EMBO Rep*. 2001;2(5):446-452.
 119. Wu JY, Scadden DT, Kronenberg HM. Role of the osteoblast lineage in the bone marrow hematopoietic niches. *J Bone Miner Res*. 2009;24(5):759-764.