

Graft-versus-leukemia effects associated with detectable Wilms tumor-1–specific T lymphocytes after allogeneic stem-cell transplantation for acute lymphoblastic leukemia

Katayoun Rezvani,¹ Agnes S. M. Yong,¹ Bipin N. Savani,¹ Stephan Mielke,¹ Keyvan Keyvanfar,¹ Emma Gostick,² David A. Price,^{2,3} Daniel C. Douek,³ and A. John Barrett¹

¹Stem Cell Allogeneic Transplantation Section, Hematology Branch, National Heart, Lung, and Blood Institute, National Institutes of Health (NIH), Bethesda, MD;

²Weatherall Institute of Molecular Medicine, University of Oxford, John Radcliffe Hospital, Oxford, United Kingdom; ³Human Immunology Section, Vaccine Research Center, National Institute of Allergy and Infectious Diseases, NIH, Bethesda, MD

To determine whether the leukemia-associated Wilms tumor antigen (WT1) contributes to a graft-versus-leukemia (GVL) effect after allogeneic stem-cell transplantation (SCT) for acute lymphoblastic leukemia (ALL), we studied CD8⁺ T-cell responses to WT1 in 10 human lymphocyte antigen (HLA)-A*0201–positive ALL patients during the early phase of immune recovery after SCT (days 30–120). Seven of 10 patients had detectable WT1 expression in their peripheral blood (PB) before SCT by quantitative reverse-transcription polymerase chain

reaction. Using WT1/HLA-A*0201 tetramers and intracellular interferon- γ (IFN- γ) staining, WT1⁺ CD8⁺ T-cell responses after SCT were found only in patients with detectable WT1 expression before SCT (5 of 7 vs. 0 of 3; $P < .05$). To monitor the kinetics of WT1⁺ CD8⁺ T-cell responses and disease regression after SCT, absolute WT1⁺ CD8⁺ T-cell numbers and WT1 expression were studied for each time point. The emergence of WT1⁺ CD8⁺ T cells was associated with a decrease in WT1 expression, suggesting a WT1-driven

GVL effect. Loss of WT1⁺ CD8⁺ T-cell responses was associated with reappearance of WT1 transcripts, consistent with a molecular relapse ($P < .001$). WT1⁺ CD8⁺ T cells had a predominantly effector–memory phenotype (CD45RO⁺ CD27[–] CD57⁺) and produced IFN- γ . Our results support the immunogenicity of WT1 after SCT for ALL and highlight the potential for WT1 vaccines to boost GVL after SCT for ALL. (Blood. 2007;110:1924–1932)

© 2007 by The American Society of Hematology

Introduction

There is abundant evidence for the presence of a graft-versus-leukemia (GVL) effect after allogeneic stem-cell transplantation (SCT) for acute lymphoblastic leukemia (ALL). Relapse rates are lower after allogeneic SCT compared with autologous SCT, especially in patients in whom acute graft-versus-host disease (GVHD), chronic GVHD, or both, develops.¹ However, patients with ALL respond poorly to conventional donor lymphocyte infusion (DLI), with reported remission rates between 0% and 18%.^{2–4} Nevertheless, although response rates are low, durable remissions are possible. One of the first recipients of DLI to treat relapsed ALL had a sustained remission for more than 8 years at the time of last report.⁵ Further support for a T-cell–mediated GVL effect in ALL comes from the finding of T cells specific for minor histocompatibility antigens, which are reactive to ALL cells after allogeneic SCT.^{6,7} A role for donor-driven GVL responses against self-antigens such as the Wilms tumor antigen-1 (WT1) in ALL has not yet been explored. The WT1 gene is implicated in leukemogenesis and is commonly expressed in ALL. WT1 overexpression occurs in 70% to 90% of ALL patients, with an even higher frequency at relapse.^{8–11} In vitro and murine data suggest that WT1 could serve as a useful and broadly expressed antigenic target for immunotherapy of leukemia.^{12–17} We and others^{18–20} have shown the presence of WT1-specific CD8⁺ T cells in patients with myeloid leukemias and healthy volunteers,^{18,19} suggesting that WT1 expression readily induces T-cell responses. More recently,

small clinical studies have demonstrated the feasibility and potential efficacy of WT1 peptide vaccination in humans.^{21–23}

The profoundly lymphopenic milieu immediately after transplantation reduces the activation threshold of antigen-specific T cells and promotes homeostatic proliferation. This allows donor-derived alloantigen and self antigen–specific T-cell clones to participate in rapid and extensive antigen-driven T-cell expansions.^{24–27} We hypothesized that WT1 presented by ALL cells persisting after SCT might drive such lymphocyte expansion in the lymphopenic period early after allogeneic transplantation, leading to an effective GVL response.

We report here that memory CD8⁺ T-cell responses against WT1 occur in patients with ALL after allogeneic SCT. WT1-specific CD8⁺ T cells were only found in patients who had WT1 gene expression in their peripheral blood (PB) before transplantation. The emergence of WT1-specific CD8⁺ T cells was associated with a reduction in leukemia load as assessed by WT1 expression, supporting the immunogenicity of WT1 as a potential target for immunotherapeutic approaches in ALL.

Patients, materials, and methods

Subjects studied

All HLA-A*0201–positive patients with ALL who received a T-cell–depleted SCT between September 1998 and February 2006 in the Hematology

Submitted March 1, 2007; accepted May 13, 2007. Prepublished online as *Blood* First Edition paper, May 15, 2007; DOI 10.1182/blood-2007-03-076844.

The publication costs of this article were defrayed in part by page charge

payment. Therefore, and solely to indicate this fact, this article is hereby marked “advertisement” in accordance with 18 USC section 1734.

© 2007 by The American Society of Hematology

Table 1. Patient characteristics

Patient	Diagnosis	Age, y	Sex, P/D	CMV serostatus, P/D	Disease status at SCT	DFS, d	DLI days after SCT	Relapse	aGVHD, day, grade (site)	WT1 expression before SCT, WT1/ABL	Maximal WT1 CD8 ⁺ T-cell response after SCT, % (time after SCT)	ALC D30	T-cell chimerism D30
1	B-ALL	20	M/M	+/+	CR2	780	60	N	47, II (S,G)	0.0028	0.57 (30 d)	3295	100
2	Ph ⁺ B-ALL	33	F/F	+/+	CR2	120	45	Y	82, II (S)	0.0107	0.12 (60 d)	458	97
3	B-ALL	27	F/F	+/+	Primary refractory	75	45	Y	48, II (S)	0.1882	0.63 (60 d)	926	100
4	B-ALL	33	F/M	+/+	CR2	339	45	Y	34, II (S)	0.0024	0.12 (30 d)	755	97
5	B-ALL	15	M/M	+/+	Primary refractory	154	60	Y	N	0.0015	0.13 (14 mo)	612	99
6	B-ALL	28	F/F	+/+	CR2	97	N	N	33, IV (S, G)	0.0007	0	1792	100
7	B-ALL	37	M/F	+/+	CR3	374	N	N	38, II (S)	0.0031	0	1320	100
8	B-ALL	10	F/F	+/+	CR2	2809	58	N	88–100, II (G)	0	0	54	N/A
9	B-ALL	22	F/F	+/+	CR2	1508	38	N	46–80, II (S,G)	0	0	34	N/A
10	B-ALL	36	F/F	+/+	Primary refractory	192	N	N	32, II (S,G)	0	0	1156	98

ALC indicates absolute lymphocyte count ($\times 10^9/\text{mL}$); aGVHD, acute graft-versus-host disease; CR, complete remission; D, donor; DFS, disease-free survival; F, female; G, gut; M, male; N/A, not applicable; N, no; Ph, Philadelphia; P, patient; S, skin; and Y, yes.

Branch, National Heart, Lung, and Blood Institute (Bethesda, MD) were eligible for study inclusion, provided before-SCT and after-SCT cells were available. Patients and their HLA-identical sibling donors were treated on National Heart, Lung, and Blood Institute SCT protocols approved by the National Heart, Lung, and Blood Institute's Institutional Review Board. Patients and donors gave written informed consent in accordance with the Declaration of Helsinki for laboratory-based studies on blood samples obtained before and after SCT at various time points. Ten human lymphocyte antigen (HLA)-A*0201⁺ ALL patients and their respective stem cell donors had adequate numbers of pre-SCT and post-SCT samples to be studied. Clinical characteristics of these 10 patients and their respective donors are presented in Table 1. Samples were analyzed before SCT and at regular intervals (days 30, 45, 60, 90, and 120) after transplantation to study the kinetics of WT1-specific CD8⁺ T-cell responses. For long-term survivors, a sample from their most recent outpatient visit was also analyzed. Cells obtained from leukapheresis products or from peripheral blood (PB) were separated using Ficoll-Hypaque density gradient centrifugation (Organon Teknica, Durham, NC) and subsequently frozen in RPMI 1640 (Life Technologies, Gaithersburg, MD) supplemented with 20% heat-inactivated fetal calf serum and 10% dimethyl sulfoxide according to standard protocols. Before use, frozen cells were thawed, washed, and suspended in RPMI⁺ 10% pooled human AB serum (Sigma Chemical, St Louis, MO). High-resolution HLA class I genotyping was performed by sequence-specific polymerase chain reaction (PCR) using genomic DNA (HLA Laboratory, Department of Transfusion Medicine, Warren G. Magnusson Clinical Center, NIH, Bethesda, MD). The presence of IgG and IgM cytomegalovirus (CMV) antibodies in the donors was analyzed by passive latex agglutination (CMVSCAN kit; Becton Dickinson Microbiology System, Cockeysville, MD).

Transplantation approach

The conditioning regimen was 12 Gy total body irradiation, fludarabine (125 mg/m²) and cyclophosphamide (Cy, 120 mg/kg). Patients underwent a T-cell-depleted granulocyte colony-stimulating factor–mobilized peripheral blood stem-cell transplantation from their HLA-identical sibling. CD34⁺ cells were positively selected using anti-CD34 beads (Isolex 300i immunomagnetic cell selection system, Nexell Therapeutics, Irvine, CA), and residual T cells were removed with a cocktail of anti-CD2, anti-CD6, and anti-CD7 antibody-coated beads (a kind gift from Dr Ronald Gress, National Cancer Institute, NIH, Bethesda, MD). The CD34⁺ cell dose ranged from 3.2–15.9 (median, 6.4) $\times 10^6/\text{kg}$; the T-cell dose was fixed at 2×10^4 CD3⁺ T cells/kg recipient weight by adding back lymphocytes to

the stem-cell fraction where necessary. Patients received low-dose cyclosporine A (target plasma level 100–200 $\mu\text{g}/\text{mL}$), starting on day –4. Cyclosporine A was continued for at least 6 months if indicated for chronic GVHD treatment. In the absence of acute GVHD, donor T cells (10⁷/kg) were added back preemptively on days 45 to 100 after transplantation. Standard prophylaxis against infection included fluconazole and bactrim for at least 6 months after transplantation, and weekly surveillance for CMV antigenemia as described previously.^{28,29}

Determination of donor-recipient chimerism after SCT

A quantitative PCR-based analysis of short tandem repeats was used to measure donor-recipient chimerism separately in lymphoid and myeloid lineages.³⁰ DNA was extracted from donor and pretransplantation patient blood samples, and PCR using fluorescent primer sets flanking 8 different short tandem repeats and amelogenin was performed using the manufacturer's conditions (Powerplex 1.2; Promega, Madison, WI) to identify an informative allele. Ficoll-hypaque-fractionated mononuclear cells were collected on posttransplantation days 14, 30, 60, and 100, and sorted into CD14⁺/CD15⁺ myeloid and CD3⁺ T cells using immunomagnetic beads (Dyna, Oslo, Norway). DNA was extracted and lineage-specific chimerism was performed by PCR using fluorescent primers flanking a single short tandem repeat previously identified as polymorphic between the patient and donor. Predetermined mixtures of pretransplantation patient and donor DNA were run in conjunction with test samples as quantitative controls (sensitivity for minor populations, 2%–3%). The PCR products were analyzed with a 310 ABI PRISM sequencer with the chimerism percentage determined by comparing the ratio of donor and patient DNA bands (Genescan software; both from PE Applied Biosystems, Foster City, CA).

Peptide synthesis

Peptides used in this study were prepared by Biosynthesis (Lewisville, TX) to a minimum purity of 95%. The identity of each of the peptides was confirmed by mass spectral analysis. The following peptides were tested: WT1 126–134 (RMFPNAPYL)^{14,16} and CMV pp65 495–503 (NLVPMVATV).³¹

Flow cytometric detection of functional antigen-specific CD8⁺ T cells

Intracellular cytokine detection was performed as described previously.³² In brief, peripheral blood mononuclear cells (PBMCs) (10⁶) were loaded with

or without test peptides (0.1 μ M). The response to CMV pp65 495-503 was used as positive control. After 2 hours, 10 μ g/mL Brefeldin A (Sigma, St Louis, MO) was added. After an additional 4 hours, CD3⁺ CD8⁺ T cells were stained with an anti-CD3 peridinin chlorophyll protein (PerCP)-conjugated antibody and anti-CD8 phycoerythrin-conjugated antibody, fixed/permeabilized, and then stained with an anti-interferon (IFN)- γ fluorescein isothiocyanate, anti-IL-4, anti-IL-10 allophycocyanin conjugate (all BD Pharmingen, San Jose, CA).

Peptide-HLA class I tetrameric complexes and immunophenotyping

Tetramers were constructed as described previously with minor modifications.^{18,33} Once prepared, tetramers were stored in the dark at 4°C. CMVpp65₄₉₅/HLA-A*0201 and HIV-1 Gag/HLA-A*0201 tetramers conjugated to allophycocyanin were used as positive and negative controls, respectively. Sample staining was performed using 2×10^6 PBMCs in 50 μ L 1% fetal calf serum/phosphate-buffered saline. Tetramers (1-2 μ g per test with respect to the peptide-MHC class I component) were added for 20 to 30 minutes at 37°C. Cells were washed once in 1% fetal calf serum/phosphate-buffered saline and then stained with a titrated panel of directly conjugated antibodies to CD3, CD8, CD27, CD57, and CD45RO (all Beckman Coulter, Miami, FL). Fluorescein isothiocyanate, phycoerythrin, PerCP, allophycocyanin Cy7, and Cy7 phycoerythrin were used as fluorophores. The lymphocytes were then washed in 1% bovine serum albumin in phosphate-buffered saline, and resuspended in 1% paraformaldehyde in phosphate-buffered saline. A minimum of 0.5×10^6 gated cells were acquired. Flow cytometry was performed on an LSR II flow cytometer (BD Biosciences, San Jose, CA) using FACS software (BD Biosciences).

Measurement of *WT1* and *BCR-ABL* by real-time quantitative reverse-transcription PCR

All samples for quantitative reverse-transcription PCR were blinded. RNA was isolated from a minimum of 10^6 PBMCs using RNeasy mini kits (Qiagen, Valencia, CA). cDNA was synthesized using the Advantage RT-for-PCR kit (Clontech, Mountain View, CA). *ABL* expression was used as the endogenous cDNA quantity control for all samples³⁴; its expression was measured using 300 nM primers and 200 nM probe.³⁵ Expression of *WT1* was measured using 500 nM primers and 200 nM probe.³⁶ All reactions by quantitative reverse-transcription PCR using the ABI PRISM 7900 sequence detection system (Applied Biosystems) were performed in triplicate in 10 μ L volume using standard conditions with 40 cycles of amplification. For correlation of ALL disease load with *WT1* expression, informative patients with known minor breakpoint *BCR-ABL* fusion gene transcripts were assessed according to an established minimal residual disease detection assay using recommended standardized probe and primers.³⁷ Both *WT1* and minor breakpoint *BCR-ABL* quantitative reverse-transcription PCR reactions could consistently detect 1 leukemic cell in 1 000 000 nonleukemic cells.

Statistical analysis

Data were analyzed by χ^2 test for categorical data and Mann-Whitney test for continuous data with the use of SPSS 14 for Windows software (SPSS, Chicago, IL) and Prism 4.00 for Windows software (GraphPad Software, San Diego, CA). *P* values were from 2-sided tests, with values less than .05 considered statistically significant.

Results

WT1-specific CD8⁺ T cells are present in ALL patients after SCT

Unstimulated PBMC samples from 10 HLA-A*0201-positive patients with ALL and their respective donors were analyzed for circulating CD8⁺ T cells specific for WT1 using FACS staining with WT1/HLA-A*0201 tetramer (Figure 1A). Clinical data are given in Table 1. A

CD8⁺ T-cell response to WT1 was observed in 5 of 10 patients after SCT, with frequencies between 0.05% and 0.63% of the CD8⁺ T-cell subpopulation. In contrast, WT1⁺ CD8⁺ T cells were not detected by tetramer staining in any of the donors or patients before SCT (Table 1, Figure 1B; *P* < .05). We next analyzed CD8⁺ T-cell responses to WT1 by intracellular IFN- γ staining in 6 patients in whom sufficient material for intracellular IFN- γ was available. A response was considered positive if the percentage of peptide-specific IFN- γ producing CD8⁺ T cells was 2-fold or higher compared with the percentage of IFN- γ producing CD8⁺ T cells in the absence of peptide and if there was a minimum of 0.05% peptide-specific IFN- γ producing CD8⁺ T cells in 10^6 PBMCs (after subtracting the percentage of IFN- γ producing CD8⁺ T cells in the absence of peptide; Figure 1C). CD8⁺ T cells specifically producing IFN- γ when exposed to WT1 were detected in 3 of 6 tested patients at frequencies between 0.05% and 0.69% of CD8⁺ T cells. These IFN- γ responders (patients 1, 3, and 4) also had CD8⁺ T-cell responses to WT1 detected by WT1/HLA-A*0201 tetramer staining, whereas nonresponders (patients 7, 8, and 10) were also negative for WT1 specificity by tetramer. In samples from 4 time points, no WT1-specific CD8⁺ T-cell responses could be detected by intracellular IFN- γ , whereas low-frequency responses ranging from 0.05% to 0.11% were detected by WT1/HLA-A*0201 staining (Figure 1D). Using intracellular cytokine staining, we also analyzed the Th2 cytokine profile (IL-4 and IL-10 production) after stimulation with WT1 peptide in 7 samples shown to have detectable WT1-specific CD8⁺ T cells by HLA-A2/WT1 tetramer staining. No significant IL-4 or IL-10 responses were seen in the samples tested (data not shown).

WT1 expression in patients with ALL and their donors

WT1 expression was detected in 1 of 10 PB samples from healthy donors (median, 0; range, 0-0.0007 *WT1/ABL*) and 7 of 10 samples from patients with ALL before SCT (median, 0.0026; range, 0-0.0107 *WT1/ABL*). In patients with ALL after SCT, *WT1* expression in PB samples varied within a wide range of more than 4 logs (median, 0.0036; range, 0-1.993 *WT1/ABL*). *WT1* expression was significantly higher in PB from patients with ALL (before and after SCT) compared with healthy donors (Figure 2A; *P* < .01). Of note, *WT1* expression was detected after SCT only in patients who had detectable *WT1* expression before SCT (7 of 7 compared with 0 of 3 with undetectable *WT1* expression before SCT). To further investigate the reliability of *WT1* expression as a marker of minimal residual disease (MRD), we analyzed the correlation of expression levels between *WT1* and a leukemia-specific fusion transcript. In this study cohort, only 1 of the 7 patients who had *WT1* expression (patient 2) had a leukemia-specific fusion transcript (minor breakpoint *BCR-ABL*). MRD in PB samples at different time points after transplantation was analyzed using real-time PCR for *WT1* and *BCR-ABL*. Among the non-HLA-A*0201 ALL patients from our center, only one other *BCR-ABL*-positive ALL patient had cells available for assessment of concurrent *WT1* and *BCR-ABL* expression. A significant correlation between *WT1* and *BCR-ABL* was seen in both patients. The time courses of the gene expression levels of *WT1* and *BCR-ABL* in patient 2 are shown in Figure 2B.

WT1 gene expression in PB samples before SCT strongly correlated with detection of WT1⁺ CD8⁺ T-cell responses after SCT. Five of 7 patients with detectable *WT1* gene expression in PB samples collected before SCT had WT1⁺ CD8⁺ T-cell responses after SCT, whereas none of the 3 patients whose PB samples tested negative for *WT1* gene expression before transplantation had detectable WT1⁺ CD8⁺ T-cell responses after SCT (Table 1, Figure 2C; *P* < .05).

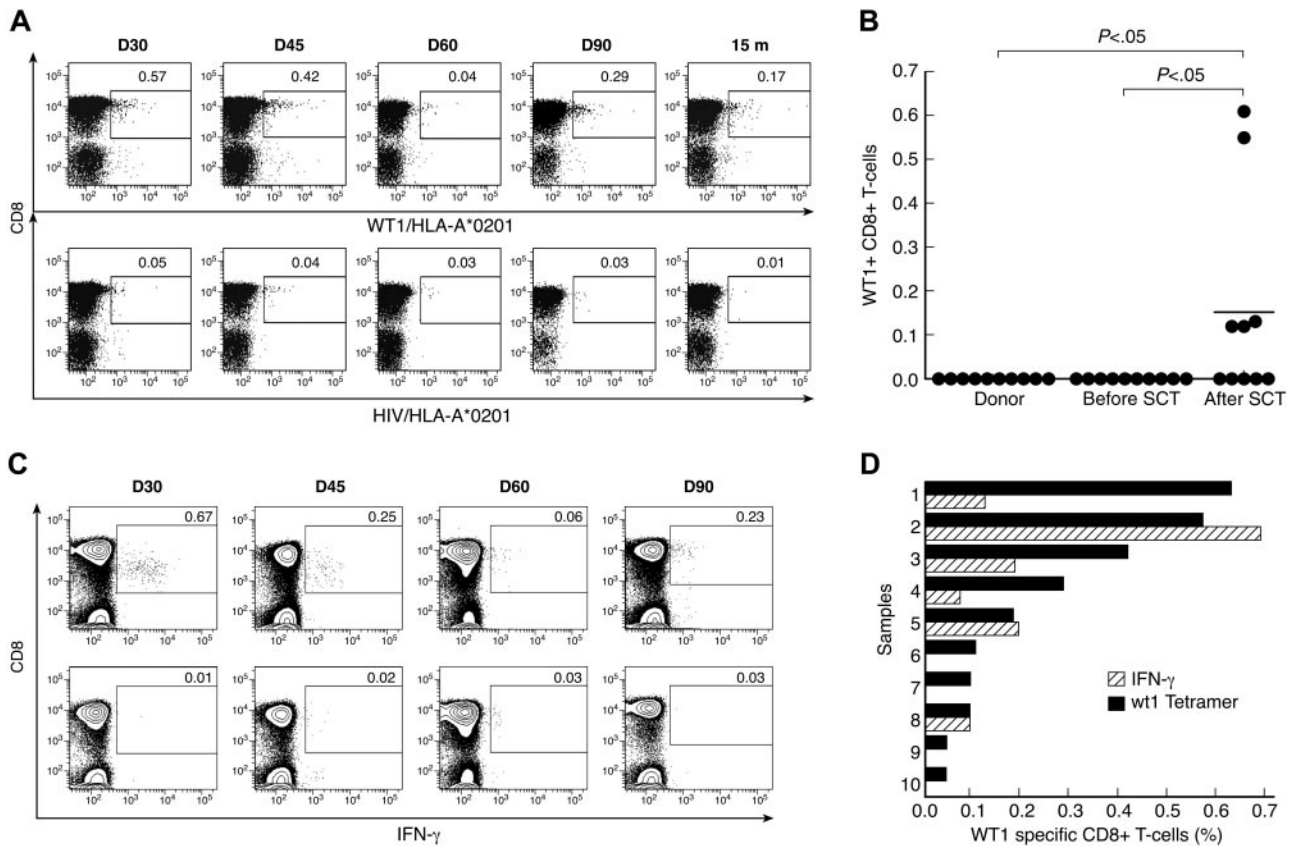


Figure 1. CD8⁺ T-cell responses to WT1 in donors and patients with ALL after SCT. (A) Tetramer analysis of PBMCs was performed by 6-color flow cytometry. Longitudinal data from patient 1 are presented. WT1/HLA-A*0201⁺ CD8⁺ T cells were gated on CD3⁺ events after passing through a small lymphocyte gate; HIV/HLA-A*0201 tetramer was used similarly as a negative control. (B) Comparison of frequency of WT1/HLA-A*0201⁺ CD8⁺ T cells in samples before SCT and after SCT. The values represent the maximal WT1/HLA-A*0201⁺ CD8⁺ T-cell response for each patient before and after SCT. Bars represent means. (C) IFN- γ production by CD8⁺ T cells in PBMC samples from patient 1, cultured for 6 hours with (top panel) or without (negative control; bottom panel) WT1 peptide. Results are expressed as percentages of CD8⁺ T cells. (D) Frequencies of WT1-specific CD8⁺ T cells by tetramer analysis (■) and WT1-specific IFN- γ producing CD8⁺ T cells (▨).

Phenotype of WT1-specific CD8⁺ T cells

Antigen-specific CD8⁺ T cells identified by HLA-A*0201 tetramers were analyzed in 2 patients (patients 1 and 3) for expression of CD45RO, CD27, and CD57 to characterize naive, memory, and effector phenotype. The longitudinal phenotypic analysis of patient 1, with a follow-up of 15 months, is illustrated in Figure 3. CMV-specific CD8⁺ T cells were used as a positive control. CMVpp65₄₉₅/HLA-A*0201⁺ CD8⁺ T cells exhibited a predominant phenotype of effector memory cells (CD45RO⁺ CD27⁻ CD57⁺) and terminally differentiated effector memory cells (CD45RO⁻ CD27⁻ CD57⁺) with a smaller population of central memory cells (CD45RO⁺ CD27⁺ CD57⁻; Figure 3A). WT1/HLA-A*0201⁺ CD8⁺ T cells, however, had a predominantly effector phenotype early after SCT suggesting an ongoing immune response against WT1, with a shift toward a more central memory phenotype later after SCT (Figure 3B).

Kinetics of CD8⁺ T-cell responses to WT1 and disease activity after SCT

To monitor the kinetics of WT1-specific CD8⁺ T-cell responses and disease regression, absolute WT1/HLA-A*0201⁺ CD8⁺ T-cell numbers and *WT1* gene expression in PB were calculated for each posttransplant sample time point. As shown in Figure 4, WT1/HLA-A*0201⁺ CD8⁺ T-cell emergence (blue symbols and line) coincided with a decrease in leukemic load as measured by *WT1* gene expression (red symbols and line). Similarly, loss of WT1/HLA-A*0201⁺ CD8⁺ T-cell responses

was followed by a reemergence of leukemia as measured by *WT1* gene expression ($P < .001$). In 3 patients (patients 1, 2, and 3; Figures 4A-C, respectively), the initiation of immunosuppressive therapy for the treatment of acute GVHD led to abrogation of the WT1⁺ CD8⁺ T-cell response and resultant molecular relapse; in one patient (patient 7; Figure 4G), cessation of immunosuppressive therapy led to the detection of WT1/HLA-A*0201⁺ CD8⁺ T cells and disappearance of *WT1* gene transcripts.

Patient 1 was a 20-year-old man with ALL in second remission (CR2). *WT1* gene transcripts were present before SCT (0.0028 *WT1/ABL*). After SCT, the number of WT1⁺ CD8⁺ T cells rapidly increased to reach a peak of more than 13 000 cells/mL by day 30 (Figure 4A). Immediately after the WT1⁺ CD8⁺ T-cell peak, no *WT1* transcripts were detectable and complete donor chimerism developed. Grade 2 acute GVHD of skin developed and the patient was treated with 1 mg/kg prednisolone for 7 days. Although testing revealed persistent complete donor chimerism, during immunosuppressive treatment WT1⁺ CD8⁺ T cells disappeared from the blood, coinciding with reappearance of *WT1* transcripts compatible with molecular relapse. On discontinuation of immunosuppressive therapy, the patient received a DLI at day 60 and WT1⁺ CD8⁺ T cells were once again detectable, associated with disappearance of *WT1* transcripts by day 90. The patient remains in complete remission 2 years after SCT with persistent WT1⁺ CD8⁺ T-cell responses.

Patient 2 was a 33-year-old woman with Philadelphia-positive ALL in CR2. *WT1* gene transcripts were present before SCT (0.0107

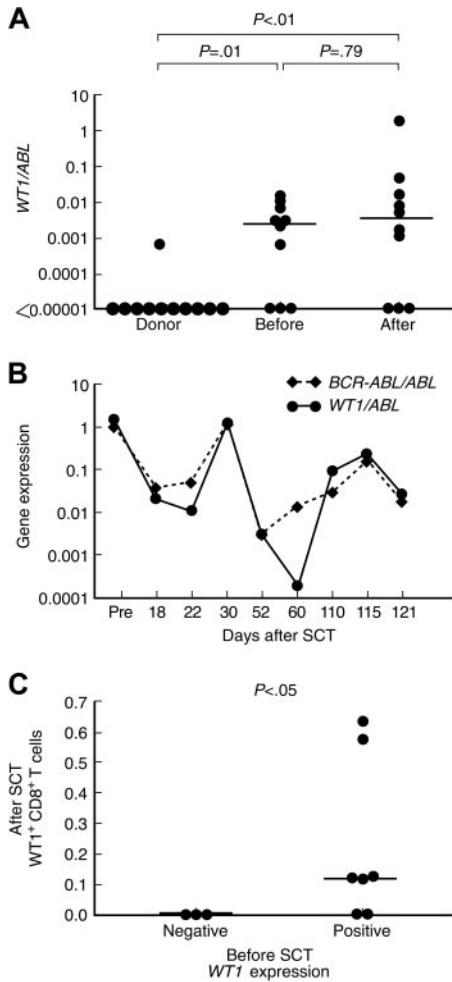


Figure 2. Relationship between WT1-specific CD8⁺ T-cell responses and WT1 gene expression in peripheral blood of patients with ALL and donors. (A) WT1 gene expression in peripheral blood samples from healthy donors, patients with ALL before SCT and after SCT. (B) Correlation between WT1 and BCR-ABL expression in PB samples from patient 2. (C) Relationship between WT1-specific CD8⁺ T-cell frequencies in PB samples after SCT and WT1 gene expression in PB samples obtained before SCT. Bars represent medians.

WT1/ABL; Figure 4B). No WT1⁺ CD8⁺ T cells were detected in the peripheral blood for the first 45 days after SCT. This was associated with detectable WT1 gene transcripts compatible with persistent molecular disease. The patient received a DLI at day 45. This was followed by an increase in WT1⁺ CD8⁺ T cells to more than 500 cells/mL by day 60 after SCT (2 weeks after DLI). The peak WT1⁺ CD8⁺ T-cell response

was associated with disappearance of WT1 gene transcripts from peripheral blood. The patient remained WT1 transcript-negative at day 90 but grade 2 acute GVHD of the skin developed on day 82, requiring treatment with oral prednisone (1 mg/kg) and cyclosporine. This was followed by a decrease in the number of detectable WT1⁺ CD8⁺ T cells and reappearance of WT1 gene transcripts at day 120 in the peripheral blood. The patient then progressed to clinical relapse and died soon after.

Patient 3 was a 27-year-old woman with primary refractory ALL. WT1 gene transcripts were present before SCT (0.1882 WT1/ABL). By day 45 after SCT, WT1⁺ CD8⁺ T cells increased rapidly to more than 5500 cells/mL (Figure 4C) and the patient was 100% donor chimeric. This was associated with the disappearance of WT1 gene transcripts in the peripheral blood. She received a preemptive DLI on day 45 after SCT, and within a few days grade 2 acute GVHD of the skin developed, necessitating prolonged treatment with oral prednisone and cyclosporine. During this period, the patient became progressively mixed donor chimeric (84% donor T cells). WT1⁺ CD8⁺ T-cell numbers decreased to as low as 100 cells/mL, coinciding with reappearance and progressive increase in WT1 transcripts. The patient then progressed to overt disease relapse and died soon after.

Patient 4 was a 33-year-old woman with ALL in CR2. WT1 gene transcripts were present before SCT (0.0024 WT1/ABL; Figure 4D). Grade 2 acute GVHD of skin developed at day 34, requiring a short course of oral prednisone (1 mg/kg). During this time, WT1 gene transcripts were detectable in the peripheral blood. The patient was 97% donor T-cell chimeric. She then received a DLI on day 45 and soon after WT1⁺ CD8⁺ T cells were detected, reaching a peak of 500 cells/mL by day 60. This was associated with disappearance of WT1 gene transcripts in the peripheral blood. The patient survived disease-free for 339 days before dying of relapsed disease 357 days after SCT.

Patient 5 was a 15-year-old boy with primary refractory ALL. WT1 gene transcripts were present before SCT (0.0015 WT1/ABL; Figure 4E). By day 45, low frequencies of WT1⁺ CD8⁺ T cells were detected, reaching a peak of 400 cells/mL after a DLI on day 60. However, the WT1⁺ CD8⁺ T-cell response was short-lived. The patient lost this response by day 120, experienced relapse clinically 5 months after SCT, and died soon after.

Patient 6 was a 28-year-old woman with ALL in CR2. WT1 gene transcripts were present before SCT (0.0007 WT1/ABL; Figure 4F). The patient achieved 100% donor T-cell chimerism at day 14 after SCT. Grade 4 acute GVHD of skin and gut developed, necessitating treatment with intravenous methylprednisone (1 mg/kg) and a course of daclizumab and infliximab. No WT1⁺ CD8⁺ T cells were detectable in this patient and she remained persistently positive for

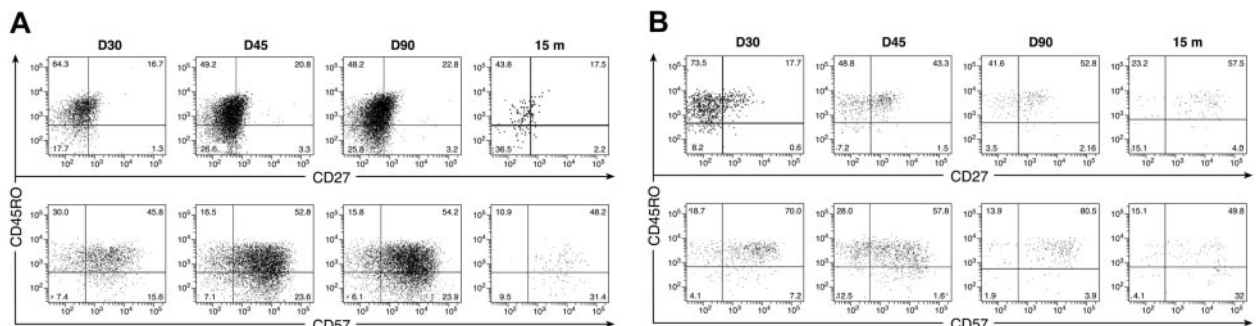


Figure 3. Longitudinal phenotypic characterization of tetramer-positive CD3⁺ CD8⁺ T cells. Analysis of PBMCs was performed by 6-color flow cytometry in 2 ALL patients at defined time points after SCT. CD45RO, CD27, and CD57 phenotype of CD3⁺ CD8⁺ T-cell gated tetramer positive lymphocytes on samples from patient 1 is presented here. (A) CMVpp65_{49/5}/HLA-A*0201⁺ CD8⁺ T cells. (B) WT1/HLA-A*0201⁺ CD8⁺ T cells

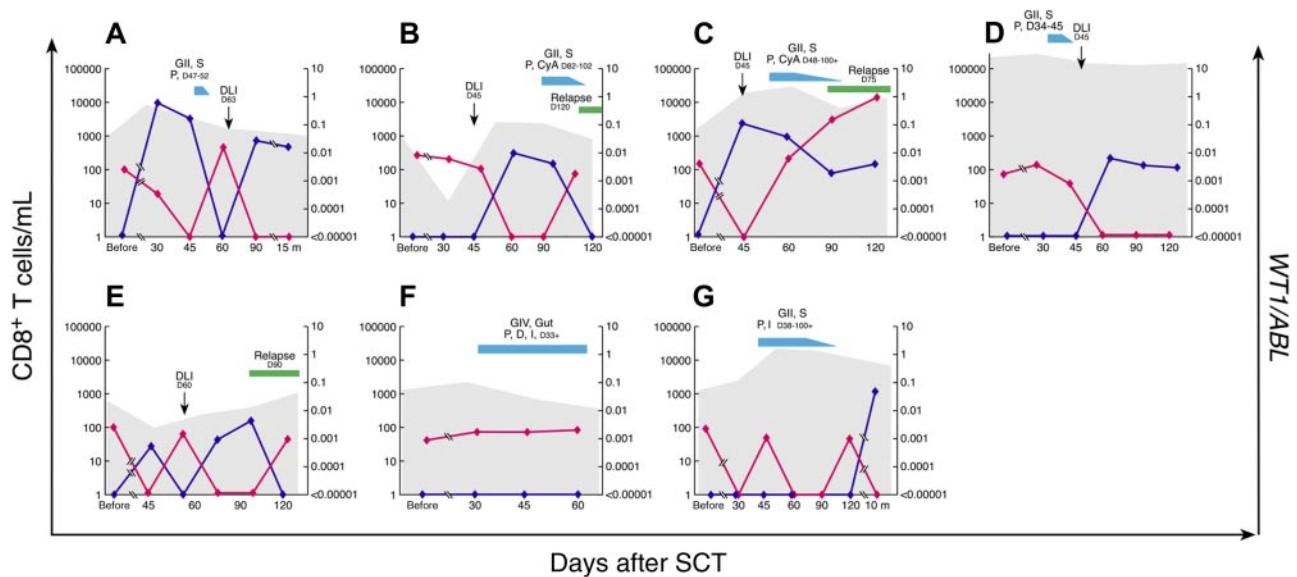


Figure 4. WT1-specific CD8⁺ T-cell responses in peripheral blood in relation to disease response as measured by *WT1/ABL* gene expression. Results in 7 individual patients with detectable *WT1* gene expression before SCT are shown (A, patient 1; B, patient 2; C, patient 3; D, patient 4; E, patient 5; F, patient 6; G, patient 7). The number of days after transplantation is shown on the x-axis. WT1/HLA-A*0201⁺ CD8⁺ T cells are expressed as absolute numbers/mL of peripheral blood (left, y-axis; dark blue); the shaded area represents absolute numbers of CMVpp65₄₉₅/HLA-A*0201⁺ CD8⁺ T cells. *WT1* gene expression in peripheral blood is expressed as the ratio of *WT1/ABL* (right, y-axis; red). Times of DLI (black arrow), GVHD (med blue), and relapse (green) are depicted on each graph. G indicates GVHD grade; S, skin; P, prednisone; m, months; CyA, cyclosporine A; D, dacluzimab; I, infliximab.

WT1 gene transcripts. She died of complications of acute GVHD 97 days after SCT.

Patient 7 was a 37-year-old man with ALL in CR3. *WT1* gene transcripts were present before SCT (0.0031 *WT1/ABL*; Figure 4G). The patient achieved 100% donor T-cell chimerism at day 14 after SCT. On day 38, grade 2 acute GVHD of skin developed, necessitating treatment with prednisone (1 mg/kg) and infliximab. While receiving immunosuppression, no WT1⁺ CD8⁺ T cells were detectable in his peripheral blood. Interestingly, however, he was intermittently negative for *WT1* gene transcripts, suggesting the presence of other GVL responses, such as minor histocompatibility antigen-driven T-cell responses. Of note, this patient received a graft from a female donor and, among others, Y-chromosome-encoded minor histocompatibility antigens may possibly explain this GVL effect.^{38,39} Chronic GVHD developed, affecting his skin. He remains disease-free and off all immunosuppression for more than 1 year after SCT with detectable WT1⁺ CD8⁺ T cells at frequencies more than 2000 cells/mL.

CD8⁺ T-cell responses to CMV in patients and donors

To ascertain that the post-SCT immune response is antigen-driven and not a consequence of nonspecific lymphopenia-driven homeostasis, the CD8⁺ T-cell response to the HLA-A*0201-restricted CMVpp65₄₉₅ peptide was analyzed by tetramer staining and intracellular IFN- γ assay in patients and their respective donors. All patients and their respective donors were CMV seropositive before transplantation. We estimated the expansion of CMVpp65₄₉₅/HLA-A*0201⁺ CD8⁺ T cells, compared with the expansion of the CD3⁺ and CD8⁺ T-cell compartments as a whole. All patients in our study received a fixed CD3⁺ T-cell dose of 2×10^4 /kg at the time of transplantation. It is possible to estimate the number of CD3⁺ lymphocytes left in the peripheral blood of each patient after infusion of the donor graft using kinetic models of biodistribution. After infusion, more than 90% of the infused CD3⁺ T-cell dose is retained in other tissues, especially the lungs, liver, and spleen such that less than 10% of the initial cell dose remains in the peripheral blood circulation.⁴⁰ From this model, we extrapolated

that once steady state is achieved, at best only 10% of the infused CD3⁺ T-cell dose (ie, 2×10^3 /kg) will remain in the circulation. Using this assumption, we estimated the absolute CD3⁺ T-cell blood count at day 0 using the formula:

$$\text{Absolute number of CD3}^+ \text{ T cells/mL at steady-state} = (\text{number of CD3}^+ \text{ T cells infused} \times 10\%) \times \text{patient weight (kg)} \div \text{patient total blood volume (assumed to be 50 mL/kg)}$$

The fold expansion in CD3⁺ T cells, CD8⁺ T cells, and CMV⁺ CD8⁺ T cells at day 30 after SCT was then calculated using the following formula:

$$\text{Absolute CD3}^+ \text{ T-cell count (cells/mL) at day 30} \div \text{Absolute CD3}^+ \text{ T cells at day 0}$$

$$\text{Absolute CD8}^+ \text{ T-cell count (cells/mL) at day 30} \div \text{Absolute CD8}^+ \text{ T cells at day 0}$$

$$\text{Absolute CMV}^+ \text{ CD8}^+ \text{ T-cell count (cells/mL) at day 30} \div \text{Absolute CMV}^+ \text{ CD8}^+ \text{ T cells at day 0}$$

CMVpp65₄₉₅/HLA-A*0201⁺ CD8⁺ T cells expanded to a considerably greater extent (median, 951×10^3 fold expansion; range, $0.009\text{--}65.15 \times 10^3$), equivalent to 18 to 19 doublings, compared with the total CD3⁺ (median, 23×10^3 fold expansion; range, $0.03\text{--}154 \times 10^3$; $P = .004$), and CD8⁺ T cells (median, 55×10^3 fold expansion; range, $0.09\text{--}464 \times 10^3$; $P = .03$), equivalent to 14 to 15 doublings (Figure 5A). There was no significant difference in fold expansion between the CD3⁺ and the CD8⁺ T-cell compartments ($P = .19$). In 3 patients the fold expansion of CMV-specific CD8⁺ T cells was 2 logs or more greater than that of the CD3⁺ or CD8⁺ T-cells compartments (patients 2, 3, and 4). Two of these 3 patients had documented early CMV reactivation (before day 30), providing further evidence for an antigen-driven expansion of CMV-specific CD8⁺ T cells (Figure 5B).

Discussion

This study demonstrates that CD8⁺ T-cell responses against the leukemia-associated antigen WT1 develop in patients with ALL receiving a T-depleted SCT. The absence of WT1-specific CD8⁺

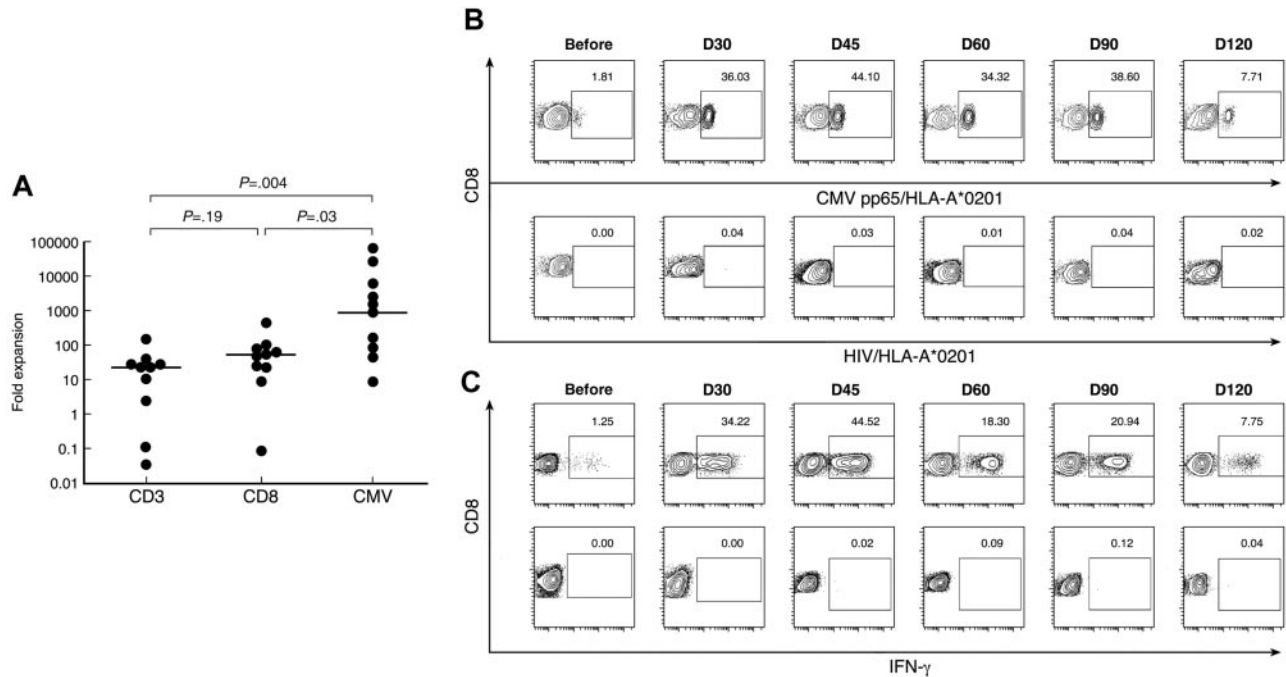


Figure 5. CMV-specific CD8⁺ T cells in patients and donors. (A) After SCT, patients have significantly greater frequencies of CMVpp65₄₉₅/HLA-A*0201⁺ CD8⁺ T cells than donors and patients before SCT. Data from multiple time points after SCT are presented. (B) Longitudinal analysis of CMVpp65₄₉₅/HLA-A*0201⁺ CD8⁺ T cells after SCT in patient 4. HIV/HLA-A*0201 was used as a negative control for tetramer staining. Results are expressed as percentages of CD8⁺ T cells. (C) Longitudinal analysis of IFN- γ production by CD8⁺ T cells in post-SCT PB samples from patient 4 cultured for 6 hours with CMV peptide (top panel) or without peptide (negative control, bottom panel). Results are expressed as percentages of CD8⁺ T cells.

T-cell responses in patients with ALL before SCT^{19,41} suggests that the early post-SCT immune environment facilitates T-cell immune responses and results in T-cell proliferation directed against self-antigens. To our knowledge, WT1 immunity in GVL responses against ALL has not been previously described. However, data from patients with myeloid leukemias suggest that WT1 is naturally immunogenic and that healthy individuals can have immunologic memory for WT1.^{18-20,41,42}

Animal experiments have shown that lymphopenia reduces the activation threshold of specific T-cells and creates a homeostatic drive to stimulate lymphocyte recovery driven by IL-2,⁴³ IL-7,⁴⁴ IL-12,⁴⁵ IL-15,^{46,47} and Flt3 ligand.⁴⁸ Lymphopenia allows donor T cells to be more easily recruited into specific immune responses, including those directed against self-antigens.²⁴⁻²⁷ A similar homeostatic drive favoring lymphocyte expansion occurs after SCT. T-cell receptor V- β spectratyping reveals that in the first few months after transplantation, the T-cell repertoire is oligoclonal because of selective expansion of antigen-stimulated T cells reactive against host, leukemia, and viral antigens (with the potential to cause GVHD and exert GVL and antiviral activity), despite global immune deficiency.⁴⁹⁻⁵² In our study, WT1-specific CD8⁺ T-cell responses were only detected after SCT in cases in which the *WT1* gene was expressed before SCT. The massive apoptosis of leukemia cells and release of antigenic cellular components during the conditioning regimen may promote antileukemia effects by making leukemia antigens available for antigen presentation to incoming donor T cells. Similarly, as we confirm here, patients who experienced CMV reactivation very early after SCT had massive expansions of CMV-specific CD8⁺ T cells (> 40% of the circulating CD8⁺ T cell compartment). This expansion appeared specific to the CMV antigen and was not a consequence of nonspecific lymphopenia-driven expansions of the CD3⁺ and CD8⁺ T-cell compartments. We therefore propose that clonal expansions of leukemia-specific T cells may occur spontaneously in vivo, pro-

vided that a sufficient amount of leukemia-associated antigens are presented under conditions of lymphopenia.

The ability of WT1-specific CD8⁺ T cells detected by tetramer staining and intracellular IFN- γ production to mediate in vivo antileukemic cytotoxicity was assessed indirectly by correlating the emergence of WT1-specific CD8⁺ T cells with the leukemia load in the PB. Emergence of WT1-specific CD8⁺ T cells coincided with reduction or complete disappearance of *WT1* gene expression in PB, whereas loss of WT1 response, for example after the initiation of immunosuppressive therapy, was associated with an increase in *WT1* expression in PB. *WT1* appeared to be an adequate marker of MRD. We found very low levels of *WT1* in the PB of healthy donors, often below the level of detection of quantitative reverse-transcription PCR (10^{-6}), whereas *WT1* expression was significantly higher in patients with ALL. The detection of *WT1* in post-SCT samples appeared to be disease specific and not merely caused by a regenerating hemopoietic system. *WT1* was not expressed in the regenerating PB of 3 patients who did not have detectable *WT1* expression in their PB before SCT. This is in keeping with work performed by others^{11,53,54} in which no significant difference was seen between normal and regenerating bone marrow, suggesting that the *WT1* expression in the post-SCT samples was indeed a marker of MRD. To further ascertain the reliability of *WT1* expression as a marker of MRD, we quantitated *WT1* transcripts in samples that expressed *BCR-ABL* in Ph⁺ ALL patients. A strong correlation in the levels of gene expression between *WT1* and *BCR-ABL* was thereby observed, again supporting the reliability and validity of *WT1* as a marker of MRD.

To better characterize the functional status of these cells in ALL patients after SCT, we used multiparametric flow cytometry to study the surface phenotype of WT1/HLA-A*0201 tetramer-binding CD8⁺ T cells. Overlapping markers such as CD45RA, CD45RO, CD28, CD27, CD57, and CCR7 have been used to

identify the differentiation state of antigen-specific CD8⁺ T cells.⁵⁵⁻⁵⁸ Ex vivo phenotypic characterization of WT1-specific CD8⁺ T cells identified these cells as mostly effector memory (CD27⁻CD57⁺) early after SCT, suggesting an ongoing immunologic response, with a trend toward more central memory phenotype later after SCT (CD27⁺CD57⁻). Whereas CD57⁺ T cells are capable of rapid secretion of effector cytokines after antigenic stimulation, they undergo apoptosis after stimulation and fail to proliferate.^{55,59} This was further demonstrated by Gattinoni et al,⁶⁰ who showed that adoptively transferred T-cell clones with a terminally differentiated effector phenotype were less successful at eradicating established tumors, partly because of their rapid disappearance after adoptive transfer. Similarly, we have recently demonstrated the marked expansion of CD8⁺ CD57⁺ T cells within the PR1/HLA-A*0201 tetramer-positive population in a patient with CML early after SCT and after a subsequent DLI. Within a few weeks, however, this terminally differentiated memory population had significantly diminished.⁶¹ In our study, insufficient material was available to perform direct ex vivo cytotoxicity against ALL, and repeated attempts at in vitro expansion to generate sufficient quantities of WT1-specific cytotoxic T-lymphocytes were unsuccessful (data not shown). Our inability to expand these cells in vitro is further testament to the proliferative senescence of these WT1-specific CD8⁺ CD57⁺ T cells. The observation that 15 months after SCT the WT1 response was still detectable but at much lower frequencies is consistent with the interpretation that WT1-specific CD8⁺ CD57⁺ T cells had undergone activation-induced cell death. The central memory phenotype appeared to be relatively diminished after transplantation but was nevertheless identifiable, suggesting that under favorable conditions CD57⁺ cells could be renewed from a central memory pool.

Therefore, it appears that in this small cohort of poor-risk ALL patients, evidence for a GVL effect exists and this GVL response is at least partly driven by WT1. However, immune responses against leukemia are often naturally directed against multiple antigens and it is very likely that WT1 is only one of many targets of this GVL response.^{18,20,62} The role of minor histocompatibility antigens in GVL and GVHD is well established.^{63,64} GVHD developed in 5 of 6 patients in our study, and in patient 7, the recipient of a female-into-male graft, GVHD was associated with intermittent reductions in *WT1* expression without evidence of a WT1 CD8⁺ T-cell response, suggesting a minor histocompatibility antigen-driven GVL response. In the remaining

4 patients, however, an inverse relationship between GVHD and *WT1* expression was not seen. GVHD and the initiation of immunosuppressive therapy were associated with an increase in *WT1* gene expression and subsequent molecular relapse, making it unlikely that in this cohort of patients the GVL response as determined by a reduction in *WT1* expression was driven by GVHD.

The prompt CD8⁺ T-cell response to WT1 and the association with suppression of the molecular marker of leukemia, WT1, suggest that WT1 could be a useful target for posttransplantation immunotherapy of ALL. Furthermore, the vigorous homeostatic proliferation of donor T cells after allogeneic SCT, especially in a T-depleted setting, may represent a hitherto unconsidered window of opportunity for posttransplantation vaccination and exploitation of the preferential proliferation of lymphocytes recognizing leukemia-associated antigens.

Acknowledgment

We would like to thank Mrs Faith Williams for her technical assistance in the presentation of figures.

Authorship

Contribution: K.R. conceived and designed the study, processed samples, performed experiments, analyzed data, and wrote the report. A.S.M.Y. performed experiments, advised on study design, and commented on manuscript. B.N.S. collected patient data, provided clinical care, advised on statistical analysis, and commented on the manuscript. S.M. advised on statistical analysis and commented on the manuscript. K.K. advised on FACS analysis and commented on the manuscript. E.G. provided tetramers. D.A.P. provided tetramers and commented on the manuscript. D.C.D. provided tetramers and commented on the manuscript. A.J.B. supervised the study, provided clinical care, and wrote the report.

Conflict-of-interest disclosure: The authors declare no competing financial interests.

Correspondence: Katayoun Rezvani, National Heart, Lung, and Blood Institute, Building 10, Hatfield CRC, Rm 3-5410, 10 Center Drive, MSC 1202, Bethesda, MD 20892-1201; email: rezvanik@nhlbi.nih.gov.

References

- Horowitz MM, Gale RP, Sondel PM, et al. Graft-versus-leukemia reactions after bone marrow transplantation. *Blood*. 1990;75:555-562.
- Collins RH Jr, Shpilberg O, Drobyski WR, et al. Donor leukocyte infusions in 140 patients with relapsed malignancy after allogeneic bone marrow transplantation. *J Clin Oncol*. 1997;15:433-444.
- Kolb HJ, Schattenberg A, Goldman JM, et al. Graft-versus-leukemia effect of donor lymphocyte transfusions in marrow grafted patients. European Group for Blood and Marrow Transplantation Working Party Chronic Leukemia. *Blood*. 1995;86:2041-2050.
- Collins RH Jr, Goldstein S, Giral S, et al. Donor leukocyte infusions in acute lymphocytic leukemia. *Bone Marrow Transplant*. 2000;26:511-516.
- Slavin S, Naparstek E, Nagler A, et al. Allogeneic cell therapy with donor peripheral blood cells and recombinant human interleukin-2 to treat leukemia relapse after allogeneic bone marrow transplantation. *Blood*. 1996;87:2195-2204.
- Warren EH, Greenberg PD, Riddell SR. Cytotoxic T-lymphocyte-defined human minor histocompatibility antigens with a restricted tissue distribution. *Blood*. 1998;91:2197-2207.
- Dolstra H, Fredrix H, Preijers F, et al. Recognition of a B cell leukemia-associated minor histocompatibility antigen by CTL. *J Immunol*. 1997;158:560-565.
- Sugiyama H. Wilms tumor gene WT1 as a tumor marker for leukemic blast cells and its role in leukemogenesis. *Methods Mol Med*. 2002;68:223-237.
- Menssen HD, Renkl HJ, Rodeck U, et al. Presence of Wilms' tumor gene (WT1) transcripts and the WT1 nuclear protein in the majority of human acute leukemias. *Leukemia*. 1995;9:1060-1067.
- Niegemann E, Wehner S, Kornhuber B, Schwabe D, Ebener U. WT1 gene expression in childhood leukemias. *Acta Haematol*. 1999;102:72-76.
- Boublikova L, Kalinova M, Ryan J, et al. Wilms' tumor gene 1 (WT1) expression in childhood acute lymphoblastic leukemia: a wide range of WT1 expression levels, its impact on prognosis and minimal residual disease monitoring. *Leukemia*. 2006;20:254-263.
- Oka Y, Elisseeva OA, Tsuboi A, et al. Human cytotoxic T-lymphocyte responses specific for peptides of the wild-type Wilms' tumor gene (WT1) product. *Immunogenetics*. 2000;51:99-107.
- Ohnami H, Yasukawa M, Fujita S. HLA class I-restricted lysis of leukemia cells by a CD8⁺ cytotoxic T-lymphocyte clone specific for WT1 peptide. *Blood*. 2000;95:286-293.
- Gao L, Bellantuono I, Elsasser A, et al. Selective elimination of leukemic CD34⁺ progenitor cells by cytotoxic T lymphocytes specific for WT1. *Blood*. 2000;95:2198-2203.
- Tsuboi A, Oka Y, Ogawa H, et al. Cytotoxic T-lymphocyte responses elicited to Wilms' tumor gene WT1 product by DNA vaccination. *J Clin Immunol*. 2000;20:195-202.
- Oka Y, Udaka K, Tsuboi A, et al. Cancer immunotherapy targeting Wilms' tumor gene WT1 product. *J Immunol*. 2000;164:1873-1880.
- Gaiger A, Reese V, Disis ML, Cheever MA. Immunity to WT1 in the animal model and in patients

- with acute myeloid leukemia. *Blood*. 2000;96:1480-1489.
18. Rezvani K, Grube M, Brenchley JM, et al. Functional leukemia-associated antigen-specific memory CD8⁺ T cells exist in healthy individuals and in patients with chronic myelogenous leukemia before and after stem cell transplantation. *Blood*. 2003;102:2892-2900.
 19. Rezvani K, Brenchley JM, Price DA, et al. T-cell responses directed against multiple HLA-A*0201-restricted epitopes derived from Wilms' tumor 1 protein in patients with leukemia and healthy donors: identification, quantification, and characterization. *Clin Cancer Res*. 2005;11:8799-8807.
 20. Scheibenbogen C, Letsch A, Thiel E, et al. CD8 T-cell responses to Wilms tumor gene product WT1 and proteinase 3 in patients with acute myeloid leukemia. *Blood*. 2002;100:2132-2137.
 21. Mailänder V, Scheibenbogen C, Thiel E, et al. Complete remission in a patient with recurrent acute myeloid leukemia induced by vaccination with WT1 peptide in the absence of hematological or renal toxicity. *Leukemia*. 2004;18:165-166.
 22. Oka Y, Tsuboi A, Murakami M, et al. Wilms tumor gene peptide-based immunotherapy for patients with overt leukemia from myelodysplastic syndrome (MDS) or MDS with myelofibrosis. *Int J Hematol*. 2003;78:56-61.
 23. Oka Y, Tsuboi A, Taguchi T, et al. Induction of WT1 (Wilms' tumor gene)-specific cytotoxic T lymphocytes by WT1 peptide vaccine and the resultant cancer regression. *Proc Natl Acad Sci U S A*. 2004;101:13885-13890.
 24. Goldrath AW, Bevan MJ. Low-affinity ligands for the TCR drive proliferation of mature CD8⁺ T cells in lymphopenic hosts. *Immunity*. 1999;11:183-190.
 25. Clarke SR, Rudensky AY. Survival and homeostatic proliferation of naive peripheral CD4⁺ T cells in the absence of self peptide:MHC complexes. *J Immunol*. 2000;165:2458-2464.
 26. Cho BK, Rao VP, Ge Q, Eisen HN, Chen J. Homeostasis-stimulated proliferation drives naive T cells to differentiate directly into memory T cells. *J Exp Med*. 2000;192:549-556.
 27. Krupica T Jr, Fry TJ, Mackall CL. Autoimmunity during lymphopenia: a two-hit model. *Clin Immunol*. 2006;120:121-128.
 28. Nakamura R, Battiwala M, Solomon S, et al. Persisting posttransplantation cytomegalovirus antigenemia correlates with poor lymphocyte proliferation to cytomegalovirus antigen and predicts for increased late relapse and treatment failure. *Biol Blood Marrow Transplant*. 2004;10:49-57.
 29. Solomon SR, Nakamura R, Read EJ, et al. Cyclosporine is required to prevent severe acute GVHD following T-cell-depleted peripheral blood stem cell transplantation. *Bone Marrow Transplant*. 2003;31:783-788.
 30. Thiede C, Bornhauser M, Oelschlagel U, et al. Sequential monitoring of chimerism and detection of minimal residual disease after allogeneic blood stem cell transplantation (BSCT) using multiplex PCR amplification of short tandem repeat markers. *Leukemia*. 2001;15:293-302.
 31. Diamond DJ, York J, Sun JY, Wright CL, Forman SJ. Development of a candidate HLA-A*0201 restricted peptide-based vaccine against human cytomegalovirus infection. *Blood*. 1997;90:1751-1767.
 32. Hensel N, Melenhorst JJ, Bradstock K, et al. Flow cytometric quantitation and characterization of the T-lymphocyte memory response to CMV in healthy donors. *Cytotherapy*. 2002;4:29-40.
 33. Altman JD, Moss PA, Goulder PJ, et al. Phenotypic analysis of antigen-specific T lymphocytes. *Science*. 1996;274:94-96.
 34. Beillard E, Pallisgaard N, van der Velden VH, et al. Evaluation of candidate control genes for diagnosis and residual disease detection in leukemic patients using "real-time" quantitative reverse-transcriptase polymerase chain reaction (RQ-PCR)—a Europe against cancer program. *Leukemia*. 2003;17:2474-2486.
 35. Yong AS, Szydlo RM, Goldman JM, Apperley JF, Melo JV. Molecular profiling of CD34⁺ cells identifies low expression of CD7, along with high expression of proteinase 3 or elastase, as predictors of longer survival in patients with CML. *Blood*. 2006;107:205-212.
 36. Ogawa H, Tamaki H, Ikegame K, et al. The usefulness of monitoring WT1 gene transcripts for the prediction and management of relapse following allogeneic stem cell transplantation in acute type leukemia. *Blood*. 2003;101:1698-1704.
 37. Gabert J, Beillard E, van der Velden VH, et al. Standardization and quality control studies of "real-time" quantitative reverse transcriptase polymerase chain reaction of fusion gene transcripts for residual disease detection in leukemia—a Europe Against Cancer program. *Leukemia*. 2003;17:2318-2357.
 38. Vogt MH, Goulmy E, Kloosterboer FM, et al. UTY gene codes for an HLA-B60-restricted human male-specific minor histocompatibility antigen involved in stem cell graft rejection: characterization of the critical polymorphic amino acid residues for T-cell recognition. *Blood*. 2000;96:3126-3132.
 39. Warren EH, Gavin MA, Simpson E, et al. The human UTY gene encodes a novel HLA-B8-restricted H-Y antigen. *J Immunol*. 2000;164:2807-2814.
 40. Zhu H, Melder RJ, Baxter LT, Jain RK. Physiologically based kinetic model of effector cell biodistribution in mammals: implications for adoptive immunotherapy. *Cancer Res*. 1996;56:3771-3781.
 41. Wu F, Oka Y, Tsuboi A, et al. Th1-biased humoral immune responses against Wilms tumor gene WT1 product in the patients with hematopoietic malignancies. *Leukemia*. 2005;19:268-274.
 42. Gaiger A, Carter L, Greinix H, et al. WT1-specific serum antibodies in patients with leukemia. *Clin Cancer Res*. 2001;7:761s-765s.
 43. Zhang H, Chua KS, Guimond M, et al. Lymphopenia and interleukin-2 therapy alter homeostasis of CD4⁺ CD25⁺ regulatory T cells. *Nat Med*. 2005;11:1238-1243.
 44. Fry TJ, Mackall CL. The many faces of IL-7: from lymphopenia to peripheral T cell maintenance. *J Immunol*. 2005;174:6571-6576.
 45. Reddy V, Winer AG, Eksioğlu E, et al. Interleukin 12 is associated with reduced relapse without increased incidence of graft-versus-host disease after allogeneic hematopoietic stem cell transplantation. *Biol Blood Marrow Transplant*. 2005;11:1014-1021.
 46. Klebanoff CA, Finkelstein SE, Surman DR, et al. IL-15 enhances the in vivo antitumor activity of tumor-reactive CD8⁺ T cells. *Proc Natl Acad Sci U S A*. 2004;101:1969-1974.
 47. Alpdogan O, Eng JM, Muriglan SJ, et al. Interleukin-15 enhances immune reconstitution after allogeneic bone marrow transplantation. *Blood*. 2005;105:865-873.
 48. Fry TJ, Sinha M, Milliron M, et al. Flt3 ligand enhances thymic-dependent and thymic-independent immune reconstitution. *Blood*. 2004;104:2794-2800.
 49. Tsutsumi Y, Tanaka J, Miura Y, et al. Molecular analysis of T-cell repertoire in patients with graft-versus-host disease after allogeneic stem cell transplantation. *Leuk Lymphoma*. 2004;45:481-488.
 50. Jones SC, Friedman TM, Murphy GF, Korngold R. Specific donor Vbeta-associated CD4 T-cell responses correlate with severe acute graft-versus-host disease directed to multiple minor histocompatibility antigens. *Biol Blood Marrow Transplant*. 2004;10:91-105.
 51. Mohty M, Mohty AM, Blaise D, et al. Cytomegalovirus-specific immune recovery following allogeneic HLA-identical sibling transplantation with reduced-intensity preparative regimen. *Bone Marrow Transplant*. 2004;33:839-846.
 52. Matsushita M, Yamazaki R, Ikeda H, et al. Possible involvement of allogeneic antigens recognized by donor-derived CD4 cytotoxic T cells in selective GVL effects after stem cell transplantation of patients with hematological malignancy. *Br J Haematol*. 2006;132:56-65.
 53. Cillonì D, Gottardi E, Messa F et al. Significant correlation between the degree of WT1 expression and the International Prognostic Scoring System Score in patients with myelodysplastic syndromes. *J Clin Oncol*. 2003;21:1988-1995.
 54. Østergaard M, Olesen LH, Hasle H, Kjeldsen E, Hokland P. WT1 gene expression: an excellent tool for monitoring minimal residual disease in 70% of acute myeloid leukaemia patients—results from a single-centre study. *Br J Haematol*. 2004;125:590-600.
 55. Brenchley JM, Karandikar NJ, Betts MR, et al. Expression of CD57 defines replicative senescence and antigen-induced apoptotic death of CD8⁺ T cells. *Blood*. 2003;101:2711-2720.
 56. Hamann D, Baars PA, Rep MH, et al. Phenotypic and functional separation of memory and effector human CD8⁺ T cells. *J Exp Med*. 1997;186:1407-1418.
 57. Sallusto F, Lenig D, Forster R, Lipp M, Lanzavecchia A. Two subsets of memory T lymphocytes with distinct homing potentials and effector functions. *Nature*. 1999;401:708-712.
 58. Wills MR, Okecha G, Weekes MP, et al. Identification of naive or antigen-experienced human CD8⁺ T cells by expression of costimulation and chemokine receptors: analysis of the human cytomegalovirus-specific CD8⁺ T cell response. *J Immunol*. 2002;168:5455-5464.
 59. Ibegbu CC, Xu YX, Harris W, et al. Expression of killer cell lectin-like receptor G1 on antigen-specific human CD8⁺ T lymphocytes during active, latent, and resolved infection and its relation with CD57. *J Immunol*. 2005;174:6088-6094.
 60. Gattinoni L, Klebanoff CA, Palmer DC, et al. Acquisition of full effector function in vitro paradoxically impairs the in vivo antitumor efficacy of adoptively transferred CD8⁺ T cells. *J Clin Invest*. 2005;115:1616-1626.
 61. Rezvani K, Price D, Brenchley J, et al. Transfer of PR1-specific T-cell clones from donor to recipient by stem cell transplantation and association with GvL activity. *Cytotherapy*. 2007;9:245-251.
 62. Gannagé M, Abel M, Michallet AS, et al. Ex vivo characterization of multi-epitopic tumor-specific CD8 T cells in patients with chronic myeloid leukemia: implications for vaccine development and adoptive cellular immunotherapy. *J Immunol*. 2005;174:8210-8218.
 63. Marijt WA, Heemskerck MH, Kloosterboer FM, et al. Hematopoiesis-restricted minor histocompatibility antigens HA-1- or HA-2-specific T cells can induce complete remissions of relapsed leukemia. *Proc Natl Acad Sci U S A*. 2003;100:2742-2747.
 64. Mutis T, Gillespie G, Schrama E, et al. Tetrameric HLA class I-minor histocompatibility antigen peptide complexes demonstrate minor histocompatibility antigen-specific cytotoxic T lymphocytes in patients with graft-versus-host disease. *Nat Med*. 1999;5:839-842.