

# Phenotype and genotype of a cohort of families historically diagnosed with type 1 von Willebrand disease in the European study, Molecular and Clinical Markers for the Diagnosis and Management of Type 1 von Willebrand Disease (MCMDM-1VWD)

Anne Goodeve,<sup>1</sup> Jeroen Eikenboom,<sup>2</sup> Giancarlo Castaman,<sup>3</sup> Francesco Rodeghiero,<sup>3</sup> Augusto B. Federici,<sup>4</sup> Javier Batlle,<sup>5</sup> Dominique Meyer,<sup>6</sup> Claudine Mazurier,<sup>7</sup> Jenny Goudemand,<sup>8</sup> Reinhard Schneppenheim,<sup>9</sup> Ulrich Budde,<sup>10</sup> Jorgen Ingerslev,<sup>11</sup> David Habart,<sup>12</sup> Zdena Vorlova,<sup>12</sup> Lars Holmberg,<sup>13</sup> Stefan Lethagen,<sup>14</sup> John Pasi,<sup>15</sup> Frank Hill,<sup>16</sup> Mohammad Hashemi Soteh,<sup>1</sup> Luciano Baronciani,<sup>4</sup> Christer Hallden,<sup>14</sup> Andrea Guilliatt,<sup>16</sup> Will Lester,<sup>16</sup> and Ian Peake<sup>1</sup>

<sup>1</sup>The Academic Unit of Haematology, University of Sheffield, United Kingdom; <sup>2</sup>Department of Hematology, Leiden University Medical Center, The Netherlands; <sup>3</sup>Hematology Department, San Bortolo Hospital, Vicenza, Italy; <sup>4</sup>Hemophilia and Thrombosis Centre, Foundation IRCCS Maggiore Policlinico Hospital, Mangiagalli Regina Elena and University of Milan, Italy; <sup>5</sup>Servicio de Hematología y Hemoterapia, Hospital Teresa Herrera, La Coruna, Spain; <sup>6</sup>Institut National de la Santé et de la Recherche Médicale (INSERM U143), INSERM, Paris, France; <sup>7</sup>Laboratoire Français du Fractionnement et des Biotechnologies, Lille, France; <sup>8</sup>University of Lille, France; <sup>9</sup>University Medical Center Hamburg-Eppendorf, Department of Pediatric Hematology and Oncology, Hamburg, Germany; <sup>10</sup>Coagulation Laboratory, Hamburg, Germany; <sup>11</sup>Centre for Haemophilia and Thrombosis, University Hospital Skejby, Aarhus, Denmark; <sup>12</sup>Institute of Hematology and Blood Transfusion, Prague, Czech Republic; <sup>13</sup>Department of Paediatrics, University of Lund, Sweden; <sup>14</sup>Department for Coagulation Disorders, University of Lund, Malmö, Sweden; <sup>15</sup>Department of Pathology, Leicester Royal Infirmary, United Kingdom; and <sup>16</sup>Department of Haematology, Children's Hospital, Birmingham, United Kingdom

**Type 1 von Willebrand disease (VWD) is characterized by a personal and family history of bleeding coincident with reduced levels of normal plasma von Willebrand factor (VWF). The molecular basis of the disorder is poorly understood. The aims of this study were to determine phenotype and genotype and their relationship in patients historically diagnosed with type 1 VWD. Families were recruited in 9 European countries based on previous type 1 VWD diagnosis. Bleed-**

**ing symptoms were recorded, plasma phenotype analyzed, and VWF mutation analysis performed in all index cases (ICs). Phenotypic and molecular analysis stratified patients into those with or without phenotypes suggestive of qualitative VWF defects (abnormal multimers) and with or without mutations. A total of 105 of 150 ICs (70%) had mutations identified. A subgroup with abnormal multimers (38% of ICs, 57 of 150) showed a high prevalence of VWF gene mutations (95%**

**of ICs, 54 of 57), whereas in those with qualitatively normal VWF, fewer mutations were identified (55% of ICs, 51 of 93). About one third of the type 1 VWD cases recruited could be reconsidered as type 2. The remaining group could be considered "true" type 1 VWD, although mutations were found in only 55%. (Blood. 2007;109:112-121)**

© 2007 by The American Society of Hematology

## Introduction

von Willebrand disease (VWD) is still considered the most common inherited bleeding disorder and is described as being caused by genetic defects in the von Willebrand factor (*VWF*) gene.<sup>1-3</sup> Diagnosis of VWD is based on the presence of autosomal inheritance of mucocutaneous bleeding symptoms and reduced VWF levels. A reduced concentration of structurally normal VWF is classified as type 1 VWD (50% to 75% of VWD), whereas qualitatively abnormal variants of VWF are classified as type 2 VWD.<sup>4</sup> Provisional diagnostic criteria for type 1 VWD were published recently on behalf of the International Society on Thrombosis and Haemostasis Scientific and Standardization Committee VWF Subcommittee (ISTH-SSC on VWF).<sup>5</sup>

Diagnosis of type 1 VWD can be difficult, especially in mild cases, because patients with reduced, structurally normal VWF due to *VWF* gene mutations cannot be distinguished phenotypically

(apart from their bleeding symptoms) from healthy individuals with VWF levels at the lower end of the normal distribution. Diagnosis is further complicated by incomplete penetrance of the disease and the influence of several genetic and environmental factors on VWF levels. There is no single assay to definitely diagnose type 1 VWD. Mutation analysis of the *VWF* gene could potentially contribute to the diagnosis. However, because of the size and complexity of the *VWF* gene (52 exons covering 178 kb,<sup>6</sup> with a partial pseudogene<sup>7</sup>), complete gene analysis has until recently been conducted in only limited numbers of patients.<sup>8</sup>

A more reliable diagnostic pathway for type 1 VWD is required to prevent false positive diagnoses, which may lead to stigmatization and unnecessary treatment with potentially dangerous plasma-derived factor concentrates, and to prevent false negative diagnoses with the risk of unnecessary bleeding complications.<sup>9</sup> To systematically study the value

Submitted May 5, 2006; accepted August 2, 2006. Prepublished online as *Blood* First Edition Paper, September 19, 2006; DOI 10.1182/blood-2006-05-020784.

An Inside *Blood* analysis of this article appears at the front of this issue.

The online version of this article contains a data supplement.

The publication costs of this article were defrayed in part by page charge payment. Therefore, and solely to indicate this fact, this article is hereby marked "advertisement" in accordance with 18 USC section 1734.

© 2007 by The American Society of Hematology

of clinical, phenotypic, and molecular markers for the diagnosis of type 1 VWD, a multicenter European study was initiated entitled *Molecular and Clinical Markers for the Diagnosis and Management of Type 1 von Willebrand Disease (MCMDM-1VWD)*.<sup>10</sup> Previous reports from this study have focused on bleeding symptoms in type 1 VWD<sup>11</sup> and on linkage with the *VWF* gene.<sup>12</sup> It was shown that a quantitative analysis of bleeding symptoms using a standardized bleeding score could be useful for more reliable diagnosis of type 1 VWD.<sup>11</sup> Linkage analysis revealed that more severe phenotypes and phenotypes suggestive of qualitative *VWF* defects were more likely to completely cosegregate with the *VWF* gene.<sup>12</sup>

In the present study, the phenotype-genotype relationship in patients previously diagnosed with type 1 VWD within the MCMDM-1VWD cohort was analyzed through detailed phenotypic analysis and mutation analysis of the entire coding sequence and approximately 2 kb of 5' noncoding sequence of the *VWF* gene.

## Patients, materials, and methods

### Study design

The MCMDM-1VWD study is a European Union (EU)-funded survey on type 1 VWD.<sup>10-12</sup> Fourteen VWD treatment centers in 9 European countries participated in the study. Partner (P) numbers were as follows; P1, Sheffield, United Kingdom; P2, Vicenza, Italy; P3, Milano, Italy; P4, La Coruna, Spain; P5, Paris and Lille, France; P6, Leiden, The Netherlands; P7, Hamburg, Germany; P8, Aarhus, Denmark; P9, Prague, Czech Republic; P10, Malmö and Lund, Sweden; P11, Leicester, United Kingdom; and P12, Birmingham, United Kingdom. The study aimed at recruiting the full spectrum of type 1 VWD families, including milder cases to mimic the clinical situation as much as possible and not to have bias toward the more severe, highly penetrant type 1 VWD. We also aimed to include as many affected and unaffected family members as possible and to include families that consisted of at least 2 generations.

### VWD families and controls

A total of 154 families historically diagnosed to have type 1 VWD by their treatment center based on ISTH-SSC on *VWF* guidelines<sup>4</sup> were recruited into the study. However, samples from some individuals taken at recruitment did not meet these criteria. Each family comprised an index case (IC) with VWD, at least 1 further affected family member (AFM), plus unaffected family members (UFMs). Additionally, each center recruited approximately 100 healthy controls (HCs) approximately age and sex matched with family members. (These individuals were referred to previously<sup>11,12</sup> as "normal controls" [NCs] rather than "healthy controls" [HCs].) HCs had never sought medical attention for a bleeding symptom prior to enrollment. Local ethics review committees at each center approved the study protocol. In accordance with the Declaration of Helsinki, informed consent was obtained from all individuals at recruitment by signing a consent form in the individual's own language. A pedigree was obtained for each family, and venous-blood samples were taken from all participants at enrollment into the study. Venous blood anticoagulated with 0.109 M sodium citrate (1:9 vol/vol) was centrifuged at 2500g for 15 minutes. Citrated plasma was separated from the cells, aliquoted, and stored at  $-70^{\circ}\text{C}$ . Packed cells were used for DNA extraction.<sup>11,12</sup>

### Bleeding questionnaire and score

A physician who was aware of a patient's diagnosis but unaware of his or her previous bleeding history administered the questionnaire to all enrolled family members at recruitment. A bleeding history was derived from detailed questions on 12 bleeding symptoms, and a score was compiled.<sup>11</sup> Each was graded for hemorrhagic severity from  $-1$  (did not bleed when challenged by 2 surgeries, tooth extractions, or deliveries) to  $+4$  (required transfusion or replacement therapy). The summed score of all symptoms resulted in a quantitative measure of bleeding severity. Total possible scores were  $-3$  to  $+45$ .<sup>11,13A</sup>

### Laboratory phenotype

Coagulation studies were undertaken as previously described.<sup>11,12</sup> All recruited individuals' plasma was assessed for *VWF* antigen (*VWF:Ag*), *VWF* ristocetin cofactor activity (*VWF:RCo*) (determined on the same samples both locally and centrally by P2, correlation  $r^2$  0.86 and 0.74, respectively<sup>11</sup>), and factor VIII activity (*FVIII:C*) (determined locally). For the present analysis, *VWF:Ag* and *VWF:RCo* values measured centrally by P2 were considered together with *FVIII:C* measured by each enrolling center. *VWF:RCo* was determined aggregometrically using normal formalin-fixed platelets and 1.0 mg/mL ristocetin. Samples with *VWF:RCo* too low to detect reliably were set at 3 IU/dL, the lower limit of detection. All IC and selected AFM, UFM, and HC plasma samples were assessed for *VWF* collagen binding (*VWF:CB*) at P3.<sup>13B</sup> All *FVIII/VWF* activities were expressed as international units per deciliter with reference to a normal plasma (NP) pool calibrated against the 4th World Health Organization (WHO) international plasma standard for *FVIII/VWF* (97/586) (National Institute for Biological Standards and Control [NIBSC], Potters Bar, United Kingdom). Ristocetin-induced platelet agglutination (RIPA) using 2 ristocetin final concentrations (0.5 mg/mL and 1.25 mg/mL) was measured in platelet-rich plasma obtained at enrollment from each IC to exclude type 2B VWD.

Multimeric pattern was determined for all 744 family members and 70 healthy controls centrally at P7 by comparison with that of normal plasma (NP) as described.<sup>14</sup> Family samples were analyzed together on a gel. Absolute and relative deviations from a normal distribution (loss of multimers or supranormal multimers) were detected using low-resolution 1.2% agarose gels and designated as abnormal. Structural multimer defects were detected by altered migration of individual oligomers using medium resolution (1.6% agarose) gels and were also designated abnormal. Normal multimers (NMs) lacked these alterations. Densitometric analysis ensured reproducibility and comparability of multimer analysis. Evaluation of all multimer patterns was performed by a single individual without knowledge of mutations upon completion of all analyses. Binding of *FVIII* to *VWF* (*VWF:FVIII*) was assessed in ICs and selected family members as percentages compared with NP (100%).<sup>15</sup>

### Genotype analysis

The *VWF* gene of each IC was analyzed for candidate mutations. DNA samples were distributed among 7 laboratories. In 11 ICs, insufficient DNA was available, and an AFM was substituted. Seven of these AFMs shared 2 alleles with the IC, and 4 shared 1 allele. Mutations identified in AFMs were confirmed in ICs. One family (P8F6) had insufficient DNA and was not screened. Two kilobases of 5' sequence (from nucleotide 1/1 of the sequence described by Mancuso et al<sup>6</sup>), exons 1 to 52, and intron/exon boundaries were analyzed, for a total of up to 21 kb, using 5 different primer sets (Table S1, available on the *Blood* website; see the Supplemental Materials link at the top of the online article). P1 and P12 used conformation-sensitive gel electrophoresis (CSGE),<sup>16</sup> P3 used single-strand conformation polymorphism (SSCP) analysis,<sup>17</sup> and P9 used denaturing high-pressure liquid chromatography (DHPLC) where amplicons were separated on a Helix DVB 50  $\times$  3 mm column (Varian, Palo Alto, CA) at temperatures suggested by the Melt Program.<sup>18A</sup> Sequence alterations were characterized in each case by DNA sequencing. P2, P7, and P10 used only direct sequencing as described.<sup>18B</sup> Mutation-negative cases were reviewed by the steering committee following phenotypic and linkage analysis. When it was considered likely that a mutation would be identified, a second laboratory undertook a second screen using a different analysis method. A few individuals were screened for a third time by DNA sequencing. Mutations identified in ICs were sought in all family members. The ISTH-SSC on *VWF* website was referred to for previously reported mutations and polymorphisms.<sup>8</sup> A number of novel sequence changes were sought in 100 HCs from the same partner to exclude single-nucleotide polymorphisms (SNPs.)

Linkage analysis was based on cosegregation of short tandem repeat polymorphisms in the *VWF* gene and diagnosis of VWD as described.<sup>12</sup> The following definitions were used: *complete cosegregation*: pedigrees with no phenocopies and fully penetrant, where a phenocopy is an individual diagnosed with VWD but who does not share the same *VWF* allele as other diagnosed

individuals; *incomplete cosegregation*: pedigrees with either phenocopies or nonpenetrances; and *noninformative*: usually due to small pedigree size.

All study participants were genotyped by P1 for A2, B, and O alleles to determine A<sub>1</sub>/A<sub>2</sub>/B/O genotype using allelic discrimination, as described.<sup>12</sup>

Exon 21 skipping resulting from splicing mutations was demonstrated by *in vitro* splicing of a 2.5-kb minigene comprising the 3' end of intron 20, exon and intron 21, exon 22, and the 5' part of intron 22 cloned into an exon-trapping vector pSPL3 (exon trapping kit, Invitrogen, Karlsruhe, Germany) and transfection of HEK 293 EBNA cells in comparison with the wild-type (wt) minigene, according to the manufacturer's instructions.

### Statistical analysis

Data analysis (median values, Mann-Whitney test) was performed using GraphPad Prism version 4.00 for Windows (GraphPad Software, San Diego, CA). SPSS for Windows version 12.0.1 (SPSS, Chicago, IL) was used for calculating odds ratios.

## Results

### VWD cohort

A total of 154 ICs, 278 AFMs, and 312 UFM s belonging to 154 families were enrolled into the study. In addition, 1166 healthy controls (approximately 100 per center; range, 74-105) were also recruited. The phenotypic data for the cohort are shown in Table 1. Although the cohort represents a heterogeneous group of patients, VWF:Ag, VWF:RCo, and FVIII:C levels were similar when comparing ICs with AFMs and UFM s with HCs. This was less apparent for VWF:CB measurements, although an incomplete cohort was available for analysis in this case.

### Phenotype determination by multimer profile and VWF:FVIII

An abnormal multimer (AbM) profile was defined as either one in which there was a reduction in high molecular weight multimers (HMWMs) or a variation in the overall multimer profile when compared with normal pooled plasma. Of the 154 ICs, 3 were excluded, 2 because of very low levels of VWF (no multimers seen) and the third because of an insufficient sample. Additionally, 1 IC was excluded because of insufficient DNA for mutation analysis. All family members of these 4 ICs were also excluded

from this analysis. Of the remaining 150 ICs, 93 showed normal multimers (NMs) using both low- and medium-resolution gels and 57 demonstrated abnormal multimers (AbMs). All further analyses are based on these 150 ICs. Details of specific types of AbM patterns will be reported in the future. Two of 150 cases had a classical type 2A VWD pattern (1.3%) and were shown to have the mutation R1374H, previously reported in type 1 platelet-discordant (type 2 according to the 1994 classification)<sup>4</sup> and 2M VWD.<sup>19,20</sup> Absence of increased sensitivity to ristocetin in the RIPA assay at initial IC screening excluded any phenotypic type 2B VWD. Multimer analysis showed that a substantial part of the cohort (38% of ICs, 57 of 150) had an AbM pattern that formally does not fit into the accepted criteria for type 1 VWD. Multimer profile was subsequently used as the major discriminator for analysis of the cohort. Analyses of VWF:Ag, VWF:RCo, FVIII:C, and VWF:CB levels in the 2 multimer groups (NM and AbM) showed significant differences between levels (Table 2), with all parameters significantly lower in the AbM group than the NM group ( $P < .001$  for each pairwise comparison). Additionally, the median ratio of VWF:RCo to VWF:Ag was significantly lower ( $P < .001$ ) in the AbM ICs (0.53) than in the NM ICs (0.96).

Nine of 150 ICs had reduced binding of FVIII to VWF; 6 showed intermediate VWF:FVIII (mean binding, 55%); while 3, representing 2% of ICs, had markedly reduced binding (less than 10%), the phenotypic hallmark of type 2N VWD.

### Mutation analysis

Candidate mutations were sought in each IC and were identified in 105 (70%). Eighty-seven had 1 mutation, 17 had 2, and 1 had 3. A total of 124 candidate mutations were identified, of which 75 were different and 54 were novel. Patients were divided into 3 groups based on multimers and mutations (Figure 1). Group 1 comprised 57 ICs with abnormal multimers, group 2 comprised 51 ICs with NMs and at least 1 candidate mutation detected, while group 3 comprised 42 ICs with NMs and no mutation detected.

### Group 1

Mutations were identified in all but 3 ICs with AbMs. Because repeated sequence analysis using different primer sets failed to

**Table 1. Phenotypic data for the cohort**

	FVIII:C	VWF:RCo	VWF:Ag	VWF:CB	VWF:RCo/VWF:Ag	Bleeding score
<b>IC</b>						
Arithmetic median, IU/dL (25th to 75th percentiles)	58 (31-80)	35 (13-53)	38 (21-51)	39 (20-60)	0.92 (0.64-1.12)	9.0 (4.5-13.0)
No. of individuals	150	149	150	149	149	150
<b>AFM</b>						
Arithmetic median, IU/dL (25th to 75th percentiles)	65 (34-89)	36 (13-55)	37 (22-56)	52 (24-80)	0.93 (0.61-1.14)	5.0 (2.0-8.0)
No. of individuals	273	270	271	87	270	274
<b>UFM</b>						
Arithmetic median, IU/dL (25th to 75th percentiles)	103 (78-135)	88 (65-113)	93 (71-119)	100 (78-121)	0.95 (0.80-1.16)	0.0 (-1.0-1.0)
No. of individuals	300	295	295	111	295	303
<b>HC</b>						
Arithmetic median, IU/dL (25th to 75th percentiles)	108 (88-133)	94 (75-117)	97 (76-121)	130 (103-150)	1.00 (0.85-1.17)	-1.0 (-1.0-0.0)
2.5th to 97.5th percentiles	57-198	47-194	48-167	66-226	0.59-1.62	-3.0-3.0
No. of individuals	1160	1156	1156	99	1156	195

*P* values using the Mann-Whitney test are as follows:

FVIII:C IC versus AFM,  $P =$  nonsignificant (NS); versus UFM and HC,  $P < .001$ . UFM versus HC,  $P = .027$ .

VWF:RCo IC versus AFM,  $P =$  NS; versus UFM and HC,  $P < .001$ . UFM versus HC,  $P = .001$ .

VWF:Ag IC versus AFM,  $P =$  NS; versus UFM and HC,  $P < .001$ . UFM versus HC,  $P =$  NS.

VWF:CB IC versus AFM,  $P = .009$ ; versus UFM and HC,  $P < .001$ . UFM versus HC,  $P < .001$ .

VWF:RCo/VWF:Ag IC versus AFM,  $P =$  NS; versus UFM,  $P = .015$ ; versus HC,  $P < .001$ . UFM versus HC,  $P = .01$ .

Bleeding score (BS) IC versus AFM, UFM, and HC,  $P < .001$ . UFM versus HC,  $P < .001$ .

IC indicates index case; AFM, affected family member; UFM, unaffected family member; HC, healthy control.

**Table 2. Number of mutations and median phenotype in 150 index cases with type 1 VWD**

Multimer pattern	No. of ICs per group	No. of mutations per IC	No. of mutations per group	FVIII:C,† IU/dL	VWF:RCo,† IU/dL	VWF:Ag,† IU/dL	VWF:CB†, IU/dL	VWF:RCo/VWF:Ag,†	% blood group O	Bleeding score†
<b>Group 1*</b>										
AbM	57	0, 1, or > 1	65	34	10	19	19	0.53	60	10.0
AbM	54	1 or > 1	65	33	10	19	17	0.53	61	10.0
AbM	43	1	43	33	10	20	19	0.50	61	10.0
AbM	11	> 1	22	34	11	13	15	0.85	64	12.0
AbM	3	0	0	39	28	36	20	0.78	33	6.0
<b>Groups 2+3</b>										
NM	93	0, 1, or > 1	59	70	45	47	54	0.96	67	8.0
<b>Group 2</b>										
NM	51	1 or > 1	59	66	42	45	48	0.93	60	8.0
NM	44	1	44	67	43	45	49	0.96	61	7.5
NM	7	> 1	15	30	38	47	38	0.81	71	10.0
<b>Group 3</b>										
NM	42	0	0	77	51	49	57	1.04	76	8.0
<b>All</b>										
AbM or NM	150	0, 1, or > 1	124	58	35	38	39	0.92	65	9.0

P values using the Mann-Whitney test are as follows:

VWF:RCo group 1 versus 2 and group 1 versus 3, *P* < .001; group 2 versus 3, *P* = .033.

VWF:Ag group 1 versus 2 and group 1 versus 3, *P* < .001; group 2 versus 3, *P* = .127.

BS group 1 versus 2, *P* = .252; group 1 versus 3, *P* = .086; group 2 versus 3, *P* = .586.

\*The groups represent categories of ICs: 1, abnormal multimers (AbM); 2, normal multimers (NM) with a mutation; 3, normal multimers (NM) without a mutation.

†Phenotypic data are indicated as the median.

identify a candidate mutation in these ICs, a missed heterozygous mutation in the region analyzed was unlikely. A single haplotype was associated with low VWF levels and AbMs in each of the families, and affected members showed a consistent multimer abnormality in each pedigree. Exon skipping resulting from undetected intronic mutations could explain their multimer pattern. However, analysis of platelet RNA of 1 IC and their AFMs did not reveal any abnormality. Heterozygous complete gene deletions were excluded by heterozygosity for at least 1 short tandem repeat (STR) in each of these 3 ICs. Partial deletions were not excluded.

Candidate mutations identified in group 1 are summarized in Table 3 (43 ICs with AbMs and a single mutation) and Table 4 (11 ICs with 2 mutations). Missense mutations were present in 39 of 43 ICs with a single mutation. Among these 43 ICs, 24 different missense mutations affecting 20 codons were identified, of which 10 predicted either loss or gain of a cysteine residue. One IC had an in-frame deletion, and 3 had different splice mutations each leading to skipping of exon 21, demonstrated by in vitro splicing using an exon-trapping kit. Mutations seen in this group, with the exception of a lone occurrence of R854Q, were all located carboxyl to the D' domain in mature VWF; none were in the propeptide (Figure 2).

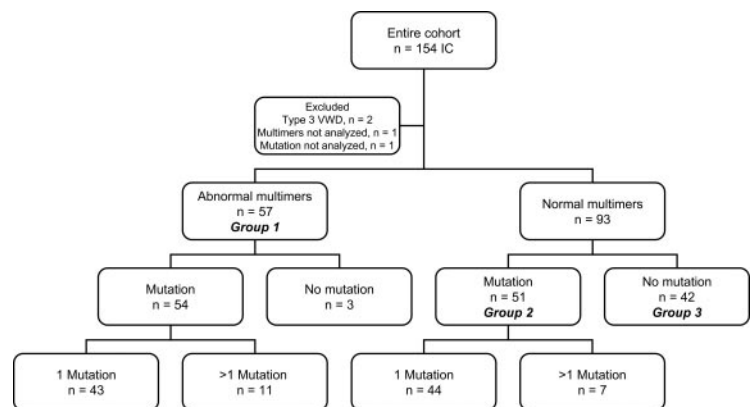
Eleven ICs with AbMs had 2 mutations each, 10 had 2 missense changes, while 1 had a missense plus a single nucleotide deletion.

Pedigree analysis showed that 5 ICs were compound heterozygotes while 6 had 2 allelic mutations. Overall median VWF levels in group 1 ICs demonstrated very low VWF:RCo (10 IU/dL) with higher VWF:Ag (19 IU/dL). The presence of a second mutation reduced VWF:Ag to 13 IU/dL (Table 2).

Linkage analysis, reported separately,<sup>12</sup> identified families that had dominantly inherited VWD linked to a single *VWF* allele. Thirty-four group 1 ICs (60%) showed complete cosegregation of VWD to *VWF*; whereas in families of 12 ICs, incomplete cosegregation was observed (not all family members possessing the familial candidate mutation were affected, and/or not all affected members possessed the familial mutation). Families of the remaining 11 ICs were not informative. Median VWF:RCo and BS were not significantly different in the ICs from families with VWD completely cosegregating with *VWF* compared with those incompletely cosegregating (VWF:RCo, 7 IU/dL versus 10 IU/dL and BS, 10 versus 11, respectively).

**Group 2**

Of 51 ICs with NMs and a mutation, 44 ICs had 1 candidate mutation identified (Table 5), while 7 had more than 1 mutation (Table 6). Six ICs had promoter region changes: 5 had a single sequence alteration, while 1 had 3. Twenty-two different single missense changes were identified;



**Figure 1. Definition of 3 groups of index cases.**



**Table 3. VWF mutations and phenotype in 43 group 1 index cases with abnormal multimers and a single mutation**

IC*	Type of mutation	Exon/intron	Nucleotide change†	Amino acid change	No. of ICs with this mutation	FVIII:C, IU/dL	VWF:RCo, IU/dL	VWF:Ag, IU/dL	VWF:CB, IU/dL	VWF:RCo/VWF:Ag	Cosegregation‡ (no. of families)
P6F11I1§	Missense	20	2561G>A <sup>40</sup>	R854Q	1	25	23	32	15	0.72	1
P7F9I1	Splice	Int20	2686-2A>G†	Exon 21 skip	1	85	36	44	27	0.82	1
P7F13I1I	Splice	Int21	2820+1G>C†	Exon 21 skip	1	68	7	21	15	0.33	1
P5F8I3	Splice	Int21	2820+1G>A†	Exon 21 skip	1	115	38	32	33	1.19	1
Range¶	Missense	26	3388T>C†	C1130R	3	13-15	7-13	12-22	6-8	0.58-0.59	1 (1), 2 (1), 3 (1)
P9F5I2	Missense	26	3388T>G†	C1130G	1	8	10	10	26	1.00	1
Range	Missense	26	3389C>T <sup>30</sup>	C1130F	2	10-22	3-4	8	2-6	0.38-0.50	1 (1), 3 (1)
P9F1I2	Missense	26	3430T>G†	W1144G	1	24	12	31	12	0.39	1
Range	Missense	27	3614G>A <sup>26</sup>	R1205H	5	7-19#	3-10	5-10	4-6	0.40-1.43	1 (2), 2 (2), 3 (1)
P3F11I1	Deletion	28	3831-3833delCCT†	D1277-E78delinsL	1	22	3	18	20	0.17	1
P6F3I1	Missense	28	3853T>C†	S1285P	1	27	3	16	8	0.19	1
P6F13I1I	Missense	28	3920T>C†	L1307P	1	33	7	16	6	0.44	1
Range	Missense	28	3943C>T <sup>39</sup>	R1315C	4	20-62	3-10	7-25	6-25	0.40-0.45	1 (2), 2 (2)
P5F4I1	Missense	28	4024C>T†	R1342C	1	43	3	20	28	0.15	1
Range	Missense	28	4120C>T <sup>20</sup>	R1374C	3	30-34	3-7	10-45	10-19	0.07-0.70	1 (3)
Range	Missense	28	4121G>A <sup>20</sup>	R1374H	2	48-79	10-16	29-74	22-23	0.22-0.34	2 (1), 3 (1)
Range	Missense	28	4244G>A†	G1415D	2	13-18	3-14	14	10-15	0.21-1.00	1 (1), 2 (1)
P12F10I1	Missense	28	4247T>A†	I1416N	1	43	3	19	20	0.16	1
P2F22I2	Missense	32	5465T>G†	V1822G	1	35	26	19	45	1.37	3
P5F9I2	Missense	38	6620T>C <sup>8</sup>	L2207P	1	71	19	26	35	0.73	2
P12F12I2	Missense	38	6769T>A†	C2257S	1	70	42	29	30	1.45	2
P5F2I2	Missense	40	6911G>A†	C2304Y	1	42	19	20	37	0.95	3
P2F16I2	Missense	42	7239C>T <sup>8,42</sup>	C2362F	1	88	34	35	39	0.97	1
P5F10I1	Missense	43	7321G>T†	G2441C	1	61	20	22	26	0.91	1
Range	Missense	43	7390C>T†	R2464C	2	32-52	25-30	25-33	37-50	0.91-1.00	1 (1), 3 (1)
P7F22I2	Missense	43	7430G>A†	C2477Y	1	68	33	38	43	0.87	2
P10F2I1	Missense	43	7430G>C†	C2477S	1	58	40	28	31	1.43	1
P3F11I1	Missense	45	7559A>C†	Q2520P	1	48	27	19	19	1.42	2

\*ICs are indicated by their study ID; when a mutation is present in more than 1 IC, the phenotypic data are indicated as "range."

†Novel mutations not previously reported on the ISTH VWF database.

‡Cosegregation of VWD with the VWF gene<sup>12</sup>; 1 indicates complete cosegregation; 2, incomplete cosegregation; 3, not informative.

§Reduced VWF:FVIII:B.

||Excluded as an SNP by absence from 100 healthy controls.

¶Reduced VWF:FVIII:B in only 1 of the 3 ICs.

#One high outlier was excluded from the range of values shown but was included in all analyses.

Y1584C<sup>21</sup> alone was seen repeatedly, in 10 ICs. Only 8 ICs had a single mutation predicted to lead to a nonexpressed (null) allele, comprising 3 splice site changes, 2 deletions and 1 insertion leading to frameshifts, plus 2 nonsense mutations. VWF:RCo and VWF:Ag in these 8 ICs ranged from 29 to 53 and 26 to 55, respectively; median values were 44 IU/dL for VWF:RCo and 39 IU/dL for VWF:Ag. Missense changes were seen throughout VWF, from G19R close to the signal peptide cleavage site to P2722A in the CK domain. One third of the group 2 missense changes were between the D4 and CK VWF domains, where few mutations have been reported previously. Among these, only 4 mutations affected a cysteine residue: Y1584C, R1379C, C2304Y, and C2693Y. Four group 2 ICs had a VWF:RCo of at least 60 IU/dL at recruitment. Bleeding scores were between 3 and 20 for these individuals, and bleeding symptoms may have influenced diagnosis. Six group 2 ICs had 2 mutations: 5 had 2 missense changes, while the sixth had a missense plus a splice site change. Four of the 6 were compound heterozygotes, while 2 had allelic changes (Table 6). A diagrammatic comparison of singly occurring missense mutations in groups 1 and 2 is shown in Figure 2. Only 3 mutations were observed to occur in each group (R854Q, R1205H, and C2304Y).

Linkage analysis demonstrated that 21 (41%) of group 2 ICs were from families in which VWD completely cosegregated with VWF. Families of 12 ICs demonstrated incomplete cosegregation, while families of the remaining 18 ICs were not informative. Median VWF:RCo but not BS was significantly lower in ICs from families in which VWD completely cosegregated with VWF

compared with those incompletely cosegregating (VWF:RCo, 37 IU/dL versus 52 IU/dL,  $P = .049$ ; and BS, 9 versus 7, respectively).

### Group 3

No VWF gene mutation was detected in 42 ICs with NMs constituting group 3. Median VWF:RCo of 51 IU/dL and VWF:Ag of 49 IU/dL were significantly higher than levels in group 1 (10 IU/dL and 19 IU/dL, respectively,  $P < .001$  for both), and VWF:RCo ( $P = .033$ ), but not VWF:Ag, was significantly higher than group 2 (42 IU/dL and 45 IU/dL, respectively; Table 2). Linkage analysis in group 3 demonstrated that 8 (19%) ICs were from families in which VWD completely cosegregated with VWF, 19 (45%) had incomplete cosegregation, and 15 (36%) were not informative. Median VWF:RCo but not BS was significantly lower in 8 ICs from families with VWD cosegregating with VWF than in 19 incompletely cosegregating cases (VWF:RCo, 36.5 IU/dL versus 53.0 IU/dL,  $P = .034$ ; and BS, 8.5 versus 9.0, respectively). Overall, 32 of 42 (76%) group 3 ICs had blood group O. Whereas 63% of the 8 completely cosegregating ICs had blood group O, 89% of the 19 incompletely cosegregating ICs had blood group O. As discussed later, non-VWF influences on the diagnosis of VWD in group 3 should be considered.

### Phenotype and genotype association

Group 3 had the highest levels of VWF parameters (Table 2) but, surprisingly, BS was substantially similar to those in the 2 other

**Table 4. VWF mutations and phenotype in 11 group 1 index cases with abnormal multimers and 2 mutations**

Type of mutation by IC*	Exon	Nucleotide change†	Amino acid change	No. of ICs with this mutation	FVIII:C, IU/dL	VWF:RCO, IU/dL	VWF:Ag, IU/dL	VWF:CB, IU/dL	VWF:RCO/VWF:Ag	Cosegregation‡ (no. of families)
<b>P1F4II1§</b>				1	34	25	19	15	1.32	1
Missense	28	4751A>G <sup>21</sup>	Y1584C							
Missense	43	7390C>T†	R2464C							
<b>P2F1II1§</b>				1	7	3	9	17	0.33	3
Deletion	28	4449delG†	L1481fs							
Missense	28	4751A>G <sup>21</sup>	Y1584C							
<b>Range  </b>				3	3-14	3-6	6-14	5-18	0.43-0.75	1 (2), 3 (1)
Missense	17	2220G>A <sup>43</sup>	M740I							
Missense	27	3614G>A <sup>43</sup>	R1205H							
<b>P2F6II1§¶</b>				1	55	11	13	ND	0.85	1
Missense	26	3389G>T <sup>30</sup>	C1130F							
Missense	49	7988G>C†	R2663P							
<b>P3F7II1§</b>				1	12	3	3	6	1.00	2
Nonsense	31	5335C>T†	R1779X							
Missense	43	7405T>C†	S2469P							
<b>P3F13I  </b>				1	78	13	42	24	0.31	1
Missense	21	2771G>A <sup>44</sup>	R924Q							
Missense	28	3944G>T†	R1315L							
<b>P4F4I1§</b>				1	34	3	10	14	0.30	1
Missense	28	4120C>T <sup>20</sup>	R1374C							
Missense	37	6433C>T†	P2145S							
<b>P5F3II2  #</b>				1	65	11	27	42	0.41	1
Missense	28	3797C>T <sup>22</sup>	P1266L							
Missense	28	3944G>A†	R1315H							
<b>P10F10II1  </b>				1	25	13	14	7	0.93	3
Missense	26	3437A>G†	Y1146C							
Missense	28	4133C>T†	S1378F							

ND indicates not done.

\*ICs are indicated by their study ID; when a mutation is present in more than 1 IC, the phenotypic data are indicated as "range."

†Novel mutations.

‡Cosegregation of VWD with the VWF gene<sup>12</sup>; 1, indicates complete cosegregation; 2, incomplete cosegregation; 3, not informative.

§Compound heterozygous inheritance of the 2 mutations.

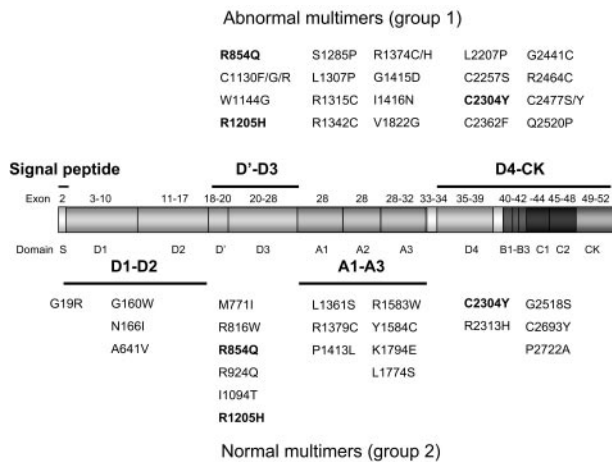
||Allelic inheritance of the 2 mutations.

¶Reduced VWF:FVIII:B.

#P1266L is the result of gene conversion with the VWF pseudogene *VWFP*. The IC also has 3789G>A; S1269.

groups (BS was 10 in group 1 ICs and 8 in each of groups 2 and 3, *P* = NS). Analysis of the VWF:RCO/VWF:Ag ratio in groups 2 and 3 confirmed the overall association of normal multimer profile with a ratio close to 1.0 and few ratios below 0.7. There was,

however, a wide overlapping distribution of VWF:RCO/VWF:Ag ratio within the groups (Figure 3), and several group 1 ICs had ratios close to 1.0. Much lower VWF:Ag and VWF:RCO levels in group 1 ICs may contribute to the observation that small changes in levels can dramatically alter VWF:Ag/VWF:RCO ratios. The presence or absence of a candidate mutation was significantly associated with VWF:Ag and VWF:RCO levels (Table 7). ICs with VWF levels of 0 to 15 IU/dL were more than 20 times as likely to have a candidate VWF mutation than those with levels above 45 IU/dL.



**Figure 2. Missense mutations in index cases with normal and abnormal multimers.** Pre-pro VWF, showing exons and protein domains encoded. The upper panel shows singly occurring mutations resulting in an abnormal multimer profile. The lower panel shows singly occurring mutations resulting in a normal multimer profile. Three substitutions in bold displayed both normal and abnormal multimers in different index cases.

## Discussion

Type 1 VWD has been considered the most common of the 3 VWD disease types, affecting 50% to 75% of all patients with the disorder. Until now, this type has remained enigmatic. The MCMDM-1VWD study aimed to characterize 154 index cases and their affected and unaffected family members with the disorder, and this paper summarizes phenotypic and molecular analysis. All families recruited into the study were previously registered at a participating center and had historic low VWF levels and a personal and family history of bleeding. The study aimed to characterize the phenotype and genotype of patients diagnosed

**Table 5. VWF mutations and phenotype in 44 group 2 index cases with normal multimers and a single mutation**

IC*	Type of mutation	Exon/intron	Nucleotide change†	Amino acid change	No. of ICs with this mutation	FVIII:C, IU/dL	VWF:Rco, IU/dL	VWF:Ag, IU/dL	VWF:CB, IU/dL	VWF:RCo/VWF:Ag	Cosegregation‡ (no. of families)
Range	Promoter	Promoter	-2520C>T†	—	4	74	57	65	61	0.88	1 (1), 2 (1), 3 (2)
P12F2II1	Promoter	Promoter	-1896C>T†	—	1	75	48	43	69	1.12	3
P6F7II3	Missense	2	55G>A†	G19R	1	80	20	30	20	0.67	2
P9F17II2	Missense	5	478G>T†	G160W	1	50	52	53	38	0.98	2
P9F12II2	Missense	5	497A>T†	N166I	1	55	29	38	22	0.76	1
P2F15II1	Splice	Int13	1534-3C>A   <sup>§</sup>	—	1	132	53	55	62	0.96	3
P7F20II1	Missense	15	1922C>T†	A641V	1	56	60	97	77	0.62	2
P9F16IV3	Missense	18	2313G>T†	M771I	1	20	59	38	49	1.55	2
P7F2II1	Deletion	18	2435delC <sup>45</sup>	P812fs	1	56	29	28	31	1.04	3
P10F8II1¶	Missense	19	2446C>T <sup>40</sup>	R816W	1	14	52	49	57	1.06	3
P12F6II2	Splice	Int20	2686-1G>C†	Exon 21 skip	1	159	42	51	60	0.82	1
P5F1II3§	Missense	20	2561G>A <sup>40</sup>	R854Q	1	28	32	37	43	0.86	1
P6F11II1	Missense	21	2771G>A <sup>44</sup>	R924Q	1	52	34	40	49	0.85	3
P3F10II1	Deletion	23	3072delC†	S1024fs	1	76	38	31	35	1.23	1
P7F1I2	Missense	25	3281T>C†	I1094T	1	148	74	71	76	1.04	3
P2F4I2	Missense	27	3614G>A <sup>26</sup>	R1205H	1	11	3	3	4	1.00	1
P12F4II12	Insertion	28	3839-3845ins7†	F1280fs	1	66	35	29	59	1.21	1
P12F7II2	Missense	28	4082T>C†	L1361S	1	86	14	90	35	0.16	1
P10F3II1	Missense	28	4135C>T <sup>46</sup>	R1379C	1	107	60	59	62	1.02	3
P10F1II2	Missense	28	4238C>T†	P1413L	1	58	39	44	37	0.89	1
P2F12II1	Nonsense	28	4423C>T†	Q1475X	1	36	38	27	48	1.41	1
P7F4II1	Missense	28	4747C>T <sup>8</sup>	R1583W	1	56	54	52	57	1.04	3
Range	Missense	28	4751A>G <sup>21</sup>	Y1584C	10	21-182	36-93	21-80	20-115	0.75-1.24	1 (5), 2 (2), 3 (3)
P7F11II1	Splice	Int29	5170+10C>T†	—	1	67	45	39	44	1.15	2
P12F13II1	Missense	31	5321T>C†	L1774S	1	107	97	64	45	1.52	2
P9F10II1	Missense	31	5380A>G†	K1794E	1	70	26	34	30	0.76	1
P10F6II1	Missense	40	6911G>A†	C2304Y	1	150	61	68	71	0.90	1
P3F9II1	Missense	40	6938G>A†	R2313H	1	70	52	61	60	0.85	2
P5F6II3	Missense	45	7551G>A†	G2518S	1	114	54	55	65	0.98	1
P8F2II2	Nonsense	45	7630C>T <sup>47</sup>	Q2544X	1	75	40	26	43	1.54	3
P6F16II1	Missense	49	8078G>A†	C2693Y	1	69	64	46	42	1.39	1
P9F11II1	Missense	51	8164C>G†	P2722A	1	5	20	31	31	0.65	1

— indicates not applicable.

\*ICs are indicated by their study ID; when a mutation is present in more than 1 IC, the phenotypic data are indicated as "range."

†Novel mutations.

‡Cosegregation of VWD with the VWF gene<sup>12</sup>; 1 indicates complete cosegregation; 2, incomplete cosegregation; 3, not informative.

§Reduced VWF:FVIII:B.

||Excluded as an SNP by absence from 100 healthy controls.

¶Absent VWF:FVIII:B.

with type 1 VWD, with a view to making future recommendations for more correct type 1 VWD diagnosis. A range of disease severities from "severe" type 1 to cases with only mildly reduced VWF levels were recruited to illustrate the full range of diagnostic difficulty. Although at recruitment some ICs displayed decreased VWF:RCo/VWF:Ag ratios based on historic data, all were registered at their treatment centers as having type 1 VWD.

Three groups of patients were defined segregated by multimer profile and mutation analysis. VWF multimers were analyzed to determine whether there was an absence of HMW, indicating type 2A or 2B VWD. Low-resolution gels are considered sufficient for this assessment and are commonly used in laboratories worldwide. In this study, more detailed analysis was undertaken using 2 different gel resolutions, enabling both reductions in HMW to be characterized and a number of subtle multimer abnormalities to be detected. All ICs with these alterations were classed as having AbMs, and these patients constituted group 1. Only 2 ICs in this group were subsequently classed as having classical type 2A VWD (both had R1374H, which has also been classed as 2M)<sup>19,20</sup> and none as 2B. One IC had a P1266L missense mutation previously reported in type IB VWD.<sup>22</sup> However, a second mutation (R1315H) on the same allele may have ameliorated the phenotype, because

platelet-rich plasma did not demonstrate increased ristocetin sensitivity.

Use of the VWF:RCo/VWF:Ag ratio as a discriminator between type 1 and type 2A, 2B, or 2M VWD has been suggested, and a cutoff of 0.7 has been proposed.<sup>23-25</sup> This cutoff correlates in the current study when comparing the median ratio in groups 1 with 2 + 3 with abnormal or normal multimers (0.53 versus 0.96), but there was considerable overlap in individual data (Figure 3), and we therefore preferred to rely on the multimer pattern to indicate structural normality of plasma VWF. The knowledge that the coefficient of variation (CV) of the VWF:RCo assay is often large (48% where the mean VWF:RCo level of a sample was 12.5 IU/dL in a recent United Kingdom National External Quality Assessment Scheme [UKNEQAS] study; S. Kitchen, personal communication, May 2006) persuaded us not to use VWF:RCo/VWF:Ag to subdivide the IC cohort. Using this information, for a sample in which both VWF:RCo and VWF:Ag were 12.5 IU/dL, ratios could range from 0.67 to 1.48.

VWF:FVIII:B analysis identified 3 of 150 ICs with markedly reduced binding (less than 10%) of VWF to FVIII, consistent with recessively inherited type 2N VWD. Each of the 3 was a compound heterozygote for 1 of the commonly described type 2N mutations plus a nonexpressed VWF allele (not identified in 1 case).

**Table 6. VWF mutations and phenotype in 7 group 2 index cases with normal multimers and more than 1 mutation**

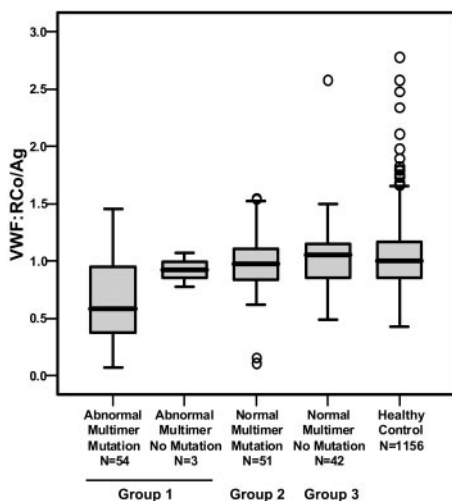
Type of mutation by IC*	Exon/intron	Nucleotide change†	Amino acid change	FVIII:C, IU/dL	VWF:Rco, IU/dL	VWF:Ag, IU/dL	VWF:CB, IU/dL	VWF:RCo/VWF:Ag	Cosegregation‡
<b>P7F14I1§</b>				93	60	58	95	1.03	2
Promoter	Promoter	-3266G>C†	—						
Promoter	Promoter	-2730C>T†	—						
Promoter	Promoter	-2326T>G†	—						
<b>P2F3II1¶  </b>				9	44	59	38	0.75	3
Splice	Int9	1109+2T>C†	—						
Missense	20	2561G>A <sup>40</sup>	R854Q						
<b>P5F11II1#¶</b>				40	38	47	59	0.81	2
Missense	20	2561G>A <sup>40</sup>	R854Q						
Missense	28	4751A>G <sup>21</sup>	Y1584C						
<b>P7F3II1¶  </b>				15	38	25	38	1.52	3
Missense	20	2561G>A <sup>40</sup>	R854Q						
Missense	21	2771G>A <sup>44</sup>	R924Q						
<b>P10F4I2§</b>				30	3	27	22	0.11	3
Missense	20	2642T>G†	L881R						
Missense	28	4263C>G <sup>8</sup>	N1421K						
<b>P6F5II1¶</b>				18	7	11	6	0.64	1
Missense	21	2771G>A <sup>44</sup>	R924Q						
Missense	27	3614G>A <sup>26</sup>	R1205H						
<b>P7F16I1§</b>				119	49	47	81	1.04	3
Missense	36	6187C>T <sup>8**</sup>	P2063S						
Missense	39	6859C>T†	R2287W						

— indicates not applicable.  
 \*ICs are indicated by their study ID.  
 †Novel mutations.  
 ‡Cosegregation of VWD with the VWF gene<sup>12</sup>; 1 indicates complete cosegregation; 2, incomplete cosegregation; 3, not informative.  
 §Allelic inheritance of 2 mutations.  
 ||Absent VWF:FVIII B.  
 ¶Compound heterozygous inheritance of 2 mutations.  
 #Reduced VWF:FVIII B.  
 \*\*Frequency checked in matched local population; allele frequency, 0.025.

The large number of different mutations identified in this study was a surprise, given the low number of previously reported mutations in type 1 VWD. Expression studies are being performed on a number of these mutations to assess their role in VWD. The observation that, in ICs in which a single mutation was found, only 3 mutations were seen in both the normal and abnormal multimer groups supports the subdivision of the full cohort by multimer analysis (Figure 2) and clearly shows a relationship between

abnormal multimers and a specific group of VWF mutations. The 3 mutations identified in both groups 1 and 2 in different patients were R854Q, R1205H, and C2304Y. Multimer abnormalities were very subtle for both the R1205H and C2304Y mutations. Other VWF sequence variation or possibly preanalytical variability may have influenced the multimer profile in these cases. The patient with R854Q was assumed to have a second, undetermined sequence alteration giving rise to the multimer abnormality, because this mutation alone does not affect multimer profile. Patients analyzed by others with mutations such as R1205H, R1315C, and R1374C have previously been described as having Vicenza subtype or type 2M VWD.<sup>26-28</sup>

The 95% mutation detection sensitivity in group 1 (at least 1 mutation identified in 54 of 57 ICs) indicated that the combination



**Figure 3. Distribution of the VWF:RCo/VWF:Ag ratio in the 3 groups of index cases and healthy controls.** The box plots indicate the median, interquartile range (box), extreme values (T bars), and outliers (○).

**Table 7. Association between the presence of mutations and VWF level in index cases**

VWF level in IC	Mutation	No mutation	OR (95% CI)
<b>VWF:Ag, IU/dL</b>			
More than 45	27	27	1*
31 to 45	24	11	2.2 (0.90-5.3)
16 to 30	30	6	5.0 (1.8-14.0)
0 to 15	23	1	23.0 (2.9-182.6)
<b>VWF:RCo, IU/dL</b>			
More than 45	23	25	1*
31 to 45	24	12	2.2 (0.89-5.3)
16 to 30	17	6	3.1 (1.04-9.2)
0 to 15	40	2	21.7 (4.7-100.3)

OR indicates odds ratio; CI, confidence interval.  
 \*Reference category.



of mutation detection techniques used in the study detected most exonic and closely flanking intronic mutations. Because sequence alterations should be no more difficult to detect among group 3 ICs, only a few heterozygous mutations were likely to have been missed. Large deletions from 1 allele would be difficult to detect due to the presence of the second normal allele. However, complete gene deletions were excluded, as all 42 ICs from group 3 were heterozygous for at least 1 STR.

Prior to this study, few mutations had been described in type 1 VWD. We are now able to relate a series of mutations to VWD phenotype. ICs with the recurrent mutations affecting C1130, and R1205, plus a number of less common mutations demonstrated low levels of VWF, with VWF:RCo being at least 10 IU/dL in virtually all cases. A dominant negative effect of mutant VWF has already been demonstrated for some of these mutations.<sup>29,30</sup> Mechanisms resulting in low plasma VWF, including increased clearance rate from plasma, have been demonstrated.<sup>29</sup> In contrast, ICs with Y1584C showed a broad range of VWF:RCo values (26–93 IU/dL; median, 37 IU/dL), believed to be mediated mainly through proteolysis of VWF by ADAMTS13.<sup>31</sup> Additionally, reduced expression of homozygous and heterozygous rVWFY1584C in comparison with rVWFwt was demonstrated by *in vitro* analysis (data not shown). Y1584C demonstrated incomplete penetrance in at least 1 reported family.<sup>32</sup> In common with the Canadian<sup>21</sup> and United Kingdom Haemophilia Centre Doctors' Organization (UKH-CDO)<sup>33</sup> studies on type 1 VWD, Y1584C was the most common alteration in MCMDM-1VWD, being seen in 8% of ICs. Mutations affecting R1315 and R1374 have been described as responsible for type 2 VWD (2M or unclassified).<sup>20,27</sup> Binding of VWF to platelet GPIb in the presence of ristocetin is strikingly decreased in these latter mutations.

The pattern of mutation observed in this cohort differs from that observed previously in type 3 VWD (reviewed by Eikenboom<sup>34</sup>), where approximately 80% of mutations are predicted to lead to null alleles. Only a few such mutations were identified in this cohort (14 of 124 mutations, 11%). Thus, heterozygosity for a "type 3" VWD allele is not the main cause of disease in patients diagnosed with type 1 VWD.<sup>35</sup> Null VWF mutations must therefore be prevalent in the population but, in the heterozygous state, rarely cause VWD. Similarly to type 2 VWD, most mutant alleles identified in our patients diagnosed with type 1 VWD are missense mutations. Therefore, a broad range of different mutant VWF allele types, including missense, nonsense, small insertion and deletion, large deletion, and splice mutations, are present in the population and can be inherited alone or in combination to result in the complex array of VWD types.

Group 1 ICs had median VWF:RCo and VWF:Ag values of 10 IU/dL and 19 IU/dL, whereas those in groups 2 and 3 were higher at 42 IU/dL and 45 IU/dL and at 51 IU/dL and 49 IU/dL, respectively. Unexpectedly, patients belonging to the 3 groups had similar bleeding scores, although their VWF levels were significantly different. Initial diagnosis of some group 2 and 3 ICs may have been based more on clinical manifestations than on particularly low VWF levels. Importantly, bleeding score refers to symptoms at historical diagnosis, often several years before enrollment, while VWF levels were measured at enrollment into the MCMDM-1VWD study.

In group 3 ICs with no VWF mutation identified and normal multimers, other causes of low VWF levels and bleeding can now be sought. Misdiagnosis of VWD itself was possible in this group but was not readily identifiable. Blood group O, known to contribute to variation in VWF plasma level,<sup>36</sup> was particularly

prevalent in this group at 76%, compared with 58% (group 1), 63% (group 2), and 38% (HCs). Eight group 3 ICs had VWD completely cosegregating with VWF, and ongoing investigations may identify VWF sequence alteration(s) associated with their VWD. Nineteen group 3 ICs were from families that demonstrated incomplete cosegregation of VWD to VWF, and factors including platelet receptor expression variability may play a role in the diagnosis of such patients.<sup>37,38</sup> Future investigation may lead to identification of linked gene(s) or other nongenetic factors that are responsible.

The MCMDM-1VWD project has recruited a heterogeneous cohort of index cases and families. Importantly, although one third showed evidence of abnormal circulating plasma VWF, very few cases were clearly classical type 2A or 2B VWD. The presence of certain previously reported mutations (eg, at amino acids 1205, 1315, 1374), the latter often classified as type 2M VWD,<sup>39,20</sup> was expected because of their frequency and difficult differential diagnosis with type 1 in the absence of functional tests. Similarly, the presence of the mutation R854Q, which in the homozygous or compound heterozygous situation results in type 2N VWD,<sup>40</sup> was expected because it has previously been shown to occur in up to 1% of the healthy population.<sup>41</sup> We believe that the spectrum of VWD phenotype and profile of mutations seen in this cohort indicate those that may be expected when routinely diagnosed type 1 VWD patients are investigated for VWF gene mutations.

## Acknowledgments

This work was supported by The European Community under the Fifth Framework Programme (QLG1-CT-2000-00387). We thank E. Jennings, M. Makris, H. Powell, M. Walker, L. Marsden, A. Al-Buhairan, S. Joyce, A. Bowyer, J. Anson, D. Hampshire, A. Tosetto, A. Cappelletti, M. Bernardi, K. Bertonecello, R. Bader, M.-T. Canciani, F. Gianniello, E. Fressinaud, A. S. Ribba, A. Stephanian, L. Hilbert, C. Caron, E. Gomez, V. van Marion, J. Lambert, F. Oyen, T. Obser, K. Will, W. Eberl, G. Auerswald, E. Christiansen, K. Drewke, J. Suttner, J. Dudlova, M. Matyskova, P. Salaj, C. Watson, J. Warren, S. Mughal, S. Enayat, G. Surdhar, and P. Short for their contributions to this study.

## Authorship

Contribution: A. Goodeve, F.R., and I.P. initiated and coordinated the study; all authors participated in study design, data collection, and performance of laboratory analyses; A. Goodeve, J.E., G.C., F.R., A.B.F., J.G., R.S., U.B., D.H., S.L., M.H.S., L.B., C.H., A. Guilliat, W.L., and I.P. analyzed and interpreted results; A. Goodeve, J.E., A.B.F., and I.P. wrote the paper; and all authors checked the final version of the manuscript.

Conflict-of-interest disclosure: The authors declare no competing financial interests.

A complete list of the members of the MCMDM-1VWD study group can be found in Document S1, available at the *Blood* website; click on the "Supplemental Materials" link at the top of the online article.

Correspondence: Anne C. Goodeve, Academic Unit of Haematology, Henry Wellcome Laboratories for Medical Research, Beech Hill Road, Sheffield S10 2RX, United Kingdom; e-mail: a.goodeve@shef.ac.uk.

## References

1. Rodeghiero F, Castaman G, Dini E. Epidemiological investigation of the prevalence of von Willebrand's disease. *Blood*. 1987;69:454-459.
2. Werner EJ, Broxson EH, Tucker EL, Giroux DS, Shults J, Abshire TC. Prevalence of von Willebrand disease in children: a multiethnic study. *J Pediatr*. 1993;123:893-898.
3. Sadler JE. Biochemistry and genetics of von Willebrand factor. *Annu Rev Biochem*. 1998;67:395-424.
4. Sadler JE. A revised classification of von Willebrand disease. For the Subcommittee on Willebrand Factor of the Scientific and Standardization Committee of the International Society on Thrombosis and Haemostasis. *Thromb Haemost*. 1994;71:520-525.
5. Sadler JE, Rodeghiero F. Provisional criteria for the diagnosis of VWD type 1. *J Thromb Haemost*. 2005;3:775-777.
6. Mancuso DJ, Tuley EA, Westfield LA, et al. Structure of the gene for human von Willebrand factor. *J Biol Chem*. 1989;264:19514-19527.
7. Mancuso DJ, Tuley EA, Westfield LA, et al. Human von Willebrand factor gene and pseudogene: structural analysis and differentiation by polymerase chain reaction. *Biochemistry*. 1991;30:253-269.
8. International Society on Thrombosis and Haemostasis Scientific and Standardization Committee VWF Information Homepage. Available at: <http://www.vwf.group.shef.ac.uk>. Accessed July 16, 2006.
9. Castaman G, Eikenboom JC, Bertina RM, Rodeghiero F. Inconsistency of association between type 1 von Willebrand disease phenotype and genotype in families identified in an epidemiological investigation. *Thromb Haemost*. 1999;82:1065-1070.
10. Molecular and Clinical Markers for the Diagnosis and Management of Type 1 VWD (MCMDM-1VWD) study. Available at: <http://www.vwd.group.shef.ac.uk>. Accessed July 16, 2006.
11. Tosoletto A, Rodeghiero F, Castaman G, et al. A quantitative analysis of bleeding symptoms in type 1 von Willebrand disease: results from a multicenter European study (MCMDM-1 VWD). *J Thromb Haemost*. 2006;4:766-773.
12. Eikenboom J, Van Marion V, Putter H, et al. Linkage analysis in families diagnosed with type 1 von Willebrand disease in the European study, Molecular and Clinical Markers for the Diagnosis and Management of Type 1 VWD (MCMDM-1VWD). *J Thromb Haemost*. 2006;4:774-782.
- 13A. Bleeding scores. Molecular and Clinical Markers for the Diagnosis and Management of Type 1 VWD (MCMDM-1VWD) study. Available at: [www.vwd.group.shef.ac.uk/bleed\\_score.htm](http://www.vwd.group.shef.ac.uk/bleed_score.htm). Accessed July 16, 2006.
- 13B. Federici AB, Canciani MT, Forza I, et al. A sensitive ristocetin co-factor activity assay with recombinant glycoprotein Ib alpha for the diagnosis of patients with low von Willebrand factor levels. *Haematologica*. 2004;89:77-85.
14. Schneppenheim R, Plendl H, Budde U. Luminography—an alternative assay for detection of von Willebrand factor multimers. *Thromb Haemost*. 1988;60:133-136.
15. Caron C, Mazurier C, Goudemand J. Large experience with a factor VIII binding assay of plasma von Willebrand factor using commercial reagents. *Br J Haematol*. 2002;117:716-718.
16. Williams IJ, Abuzenadah A, Winship PR, et al. Precise carrier diagnosis in families with haemophilia A: use of conformation sensitive gel electrophoresis for mutation screening and polymorphism analysis. *Thromb Haemost*. 1998;79:723-726.
17. Baronciani L, Cozzi G, Canciani MT, et al. Molecular characterization of a multiethnic group of 21 patients with type 3 von Willebrand disease. *Thromb Haemost*. 2000;84:536-540.
- 18A. DHPLC Melt Program. Stanford Genome Technology Center. Available at: <http://insertion.stanford.edu/melt.html>. Accessed October 31, 2002.
- 18B. Gupta PK, Adamtziki E, Budde U, et al. Gene conversions are a common cause of von Willebrand disease. *Br J Haematol*. 2005;130:752-758.
19. Castaman G, Eikenboom JC, Rodeghiero F, Briet E, Reitsma PH. A novel candidate mutation (Arg611—His) in type 1 'platelet discordant' von Willebrand's disease with desmopressin-induced thrombocytopenia. *Br J Haematol*. 1995;89:656-658.
20. Hilbert L, Gaucher C, Mazurier C. Identification of two mutations (Arg611Cys and Arg611His) in the A1 loop of von Willebrand factor (vWF) responsible for type 2 von Willebrand disease with decreased platelet-dependent function of vWF. *Blood*. 1995;86:1010-1018.
21. O'Brien LA, James PD, Othman M, et al. Founder von Willebrand factor haplotype associated with type 1 von Willebrand disease. *Blood*. 2003;102:549-557.
22. Holmberg L, Dent JA, Schneppenheim R, Budde U, Ware J, Ruggeri ZM. von Willebrand factor mutation enhancing interaction with platelets in patients with normal multimeric structure. *J Clin Invest*. 1993;91:2169-2177.
23. Federici AB. Diagnosis of von Willebrand disease. *Haemophilia*. 1998;4:654-660.
24. Federici AB, Castaman G, Mannucci PM. Guidelines for the diagnosis and management of von Willebrand disease in Italy. *Haemophilia*. 2002;8:607-621.
25. Hillery CA, Mancuso DJ, Sadler JE, et al. Type 2M von Willebrand disease: F606I and I662F mutations in the glycoprotein Ib binding domain selectively impair ristocetin- but not botrocetin-mediated binding of von Willebrand factor to platelets. *Blood*. 1998;91:1572-1581.
26. Schneppenheim R, Federici AB, Budde U, et al. Von Willebrand disease type 2M "Vicenza" in Italian and German patients: identification of the first candidate mutation (G3864A; R1205H) in 8 families. *Thromb Haemost*. 2000;83:136-140.
27. Ribba AS, Hilbert L, Lavergne JM, et al. The arginine-552-cysteine (R1315C) mutation within the A1 loop of von Willebrand factor induces an abnormal folding with a loss of function resulting in type 2A-like phenotype of von Willebrand disease: study of 10 patients and mutated recombinant von Willebrand factor. *Blood*. 2001;97:952-959.
28. Penas N, Perez-Rodriguez A, Torea JH, et al. von Willebrand disease R1374C: type 2A or 2M? A challenge to the revised classification. High frequency in the northwest of Spain (Galicia). *Am J Hematol*. 2005;80:188-196.
29. Schooten CJ, Tjernberg P, Westein E, et al. Cysteine-mutations in von Willebrand factor associated with increased clearance. *J Thromb Haemost*. 2005;3:2228-2237.
30. Eikenboom JC, Matsushita T, Reitsma PH, et al. Dominant type 1 von Willebrand disease caused by mutated cysteine residues in the D3 domain of von Willebrand factor. *Blood*. 1996;88:2433-2441.
31. Bowen DJ, Collins PW. An amino acid polymorphism in von Willebrand factor correlates with increased susceptibility to proteolysis by ADAMTS13. *Blood*. 2004;103:941-947.
32. Lanke E, Johansson AM, Hallden C, Lethagen S. Genetic analysis of 31 Swedish type 1 von Willebrand disease families reveals incomplete linkage to the von Willebrand factor gene and a high frequency of a certain disease haplotype. *J Thromb Haemost*. 2005;3:2656-2663.
33. Bowen DJ, Collins PW, Lester W, et al. The prevalence of the cysteine1584 variant of von Willebrand factor is increased in type 1 von Willebrand disease: co-segregation with increased susceptibility to ADAMTS13 proteolysis but not clinical phenotype. *Br J Haematol*. 2005;128:830-836.
34. Eikenboom JC. Congenital von Willebrand disease type 3: clinical manifestations, pathophysiology and molecular biology. *Best Pract Res Clin Haematol*. 2001;14:365-379.
35. Coughlan TC, Blagg JL, Abulola M, et al. Null alleles are not a common cause of type 1 von Willebrand disease in the British population. *Thromb Haemost*. 1999;82:1373-1375.
36. Gill JC, Endres-Brooks J, Bauer PJ, Marks WJ, Montgomery RR. The effect of ABO blood group on the diagnosis of von Willebrand disease. *Blood*. 1987;69:1691-1695.
37. Di Paola J, Federici AB, Mannucci PM, et al. Low platelet alpha2beta1 levels in type I von Willebrand disease correlate with impaired platelet function in a high shear stress system. *Blood*. 1999;93:3578-3582.
38. Kunicki TJ, Federici AB, Salomon DR, et al. An association of candidate gene haplotypes and bleeding severity in von Willebrand disease (VWD) type 1 pedigrees. *Blood*. 2004;104:2359-2367.
39. Casana P, Martinez F, Espinos C, Haya S, Lorenzo JI, Aznar JA. Search for mutations in a segment of the exon 28 of the human von Willebrand factor gene: new mutations, R1315C and R1341W, associated with type 2M and 2B variants. *Am J Hematol*. 1998;59:57-63.
40. Gaucher C, Mercier B, Jorieux S, Oufkir D, Mazurier C. Identification of two point mutations in the von Willebrand factor gene of three families with the 'Normandy' variant of von Willebrand disease. *Br J Haematol*. 1991;78:506-514.
41. Eikenboom JC, Reitsma PH, Peerlinck KM, Briet E. Recessive inheritance of von Willebrand's disease type I. *Lancet*. 1993;341:982-986.
42. Eikenboom JC, Castaman G, Vos HL, Bertina RM, Rodeghiero F. Characterization of the genetic defects in recessive type 1 and type 3 von Willebrand disease patients of Italian origin. *Thromb Haemost*. 1998;79:709-717.
43. Castaman G, Missiaglia E, Federici AB, Schneppenheim R, Rodeghiero F. An additional unique candidate mutation (G2470A; M740I) in the original families with von Willebrand disease type 2M Vicenza and the G3864A (R1205H) mutation. *Thromb Haemost*. 2000;84:350-351.
44. Hilbert L, Jorieux S, Proulle V, et al. Two novel mutations, Q1053H and C1060R, located in the D3 domain of von Willebrand factor, are responsible for decreased FVIII-binding capacity. *Br J Haematol*. 2003;120:627-632.
45. Zhang ZP, Falk G, Blombäck M, Egberg N, Anvret M. A single cytosine deletion in exon 18 of the von Willebrand factor gene is the most common mutation in Swedish vWD type III patients. *Hum Mol Genet*. 1992;1:767-768.
46. Casana P, Martinez F, Haya S, Tavares A, Aznar JA. New mutations in exon 28 of the von Willebrand factor gene detected in patients with different types of von Willebrand's disease. *Haematologica*. 2001;86:414-419.
47. Baronciani L, Cozzi G, Canciani MT, et al. Molecular defects in type 3 von Willebrand disease: updated results from 40 multiethnic patients. *Blood Cells Mol Dis*. 2003;30:264-270.