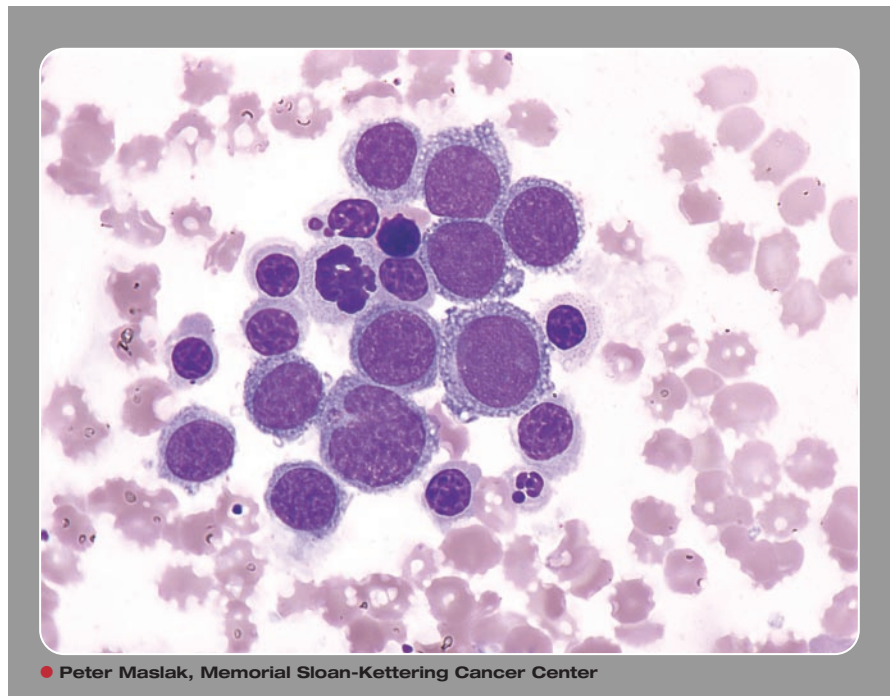


## Erythroleukemia



**E**rythroid precursors are dysplastic. Megaloblastic changes are noted in the nuclei. The cytoplasm may contain poorly defined vacuoles. Some of the dysplastic forms have condensed, fragmented nuclei.



Many Blood Work images are provided by the **ASH IMAGE BANK**, a reference and teaching tool that is continually updated with new atlas images and images of case studies. For more information or to contribute to the Image Bank, visit [www.ashimagebank.org](http://www.ashimagebank.org).